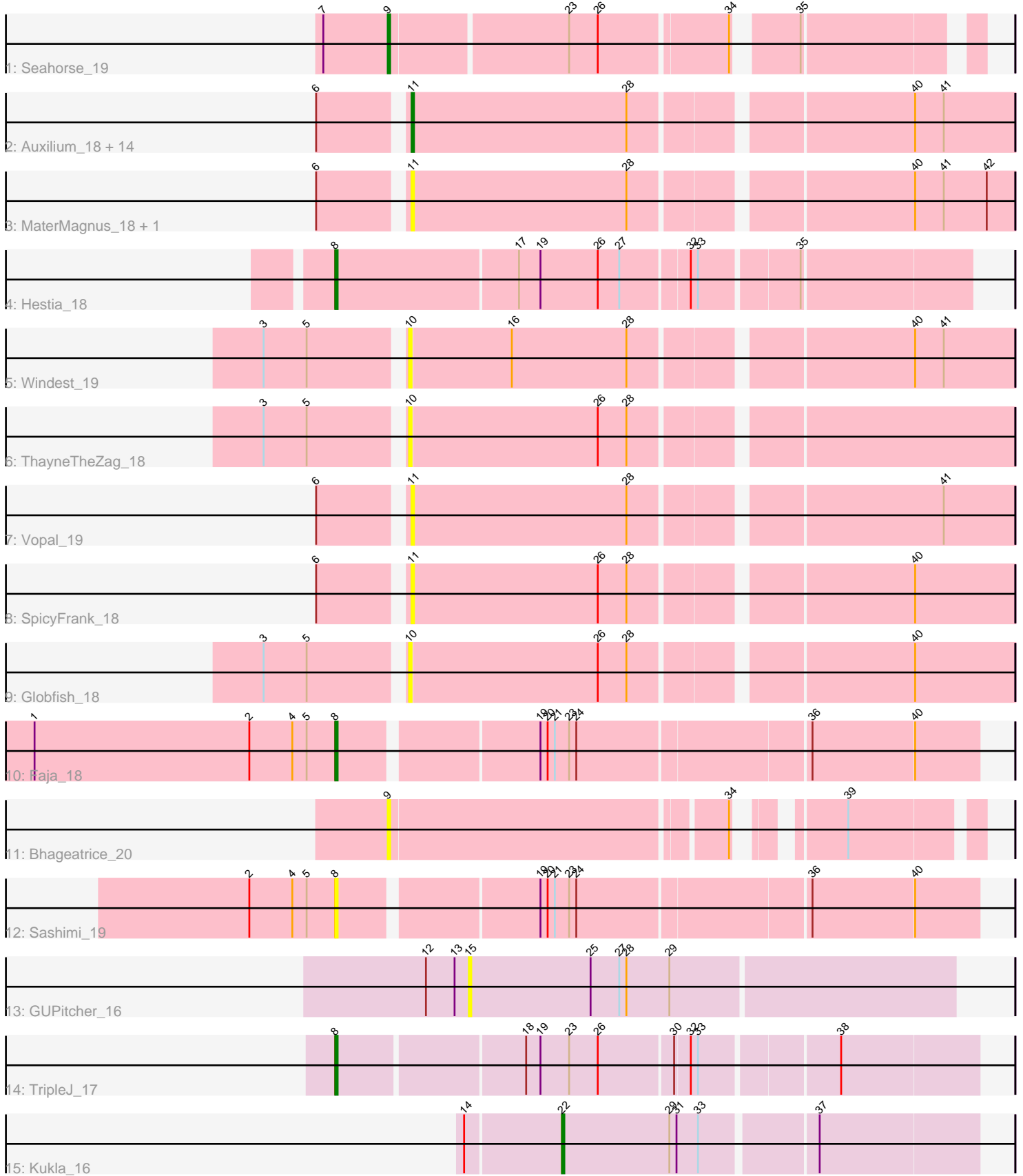


Pham 224797



Note: Tracks are now grouped by subcluster and scaled. Switching in subcluster is indicated by changes in track color. Track scale is now set by default to display the region 30 bp upstream of start 1 to 30 bp downstream of the last possible start. If this default region is judged to be packed too tightly with annotated starts, the track will be further scaled to only show that region of the ORF with annotated starts. This action will be indicated by adding "Zoomed" to the title. For starts, yellow indicates the location of called starts comprised solely of Glimmer/GeneMark auto-annotations, green indicates the location of called starts with at least 1 manual gene annotation.

Pham 224797 Report

This analysis was run 03/28/25 on database version 593.

Pham number 224797 has 30 members, 17 are drafts.

Phages represented in each track:

- Track 1 : Seahorse_19
- Track 2 : Auxilium_18, RadFad_18, AdaS_18, Hillester_18, MUWow_17, Sakai_18, Raphaella_18, Richie_18, CookieBear_19, JellyBread_18, YoungHarleezy_18, BlueShadow_19, BenchScraper_18, MidnightRain_18, Gorpy_18
- Track 3 : MaterMagnus_18, Aikyam_18
- Track 4 : Hestia_18
- Track 5 : Windest_19
- Track 6 : ThayneTheZag_18
- Track 7 : Vopal_19
- Track 8 : SpicyFrank_18
- Track 9 : Globfish_18
- Track 10 : Faja_18
- Track 11 : Bhageatrice_20
- Track 12 : Sashimi_19
- Track 13 : GUPitcher_16
- Track 14 : TripleJ_17
- Track 15 : Kukla_16

Summary of Final Annotations (See graph section above for start numbers):

The start number called the most often in the published annotations is 11, it was called in 8 of the 13 non-draft genes in the pham.

Genes that call this "Most Annotated" start:

- AdaS_18, Aikyam_18, Auxilium_18, BenchScraper_18, BlueShadow_19, CookieBear_19, Gorpy_18, Hillester_18, JellyBread_18, MUWow_17, MaterMagnus_18, MidnightRain_18, RadFad_18, Raphaella_18, Richie_18, Sakai_18, SpicyFrank_18, Vopal_19, YoungHarleezy_18,

Genes that have the "Most Annotated" start but do not call it:

-

Genes that do not have the "Most Annotated" start:

- Bhageatrice_20, Faja_18, GUPitcher_16, Globfish_18, Hestia_18, Kukla_16, Sashimi_19, Seahorse_19, ThayneTheZag_18, TripleJ_17, Windest_19,

Summary by start number:

Start 8:

- Found in 4 of 30 (13.3%) of genes in pham
- Manual Annotations of this start: 3 of 13
- Called 100.0% of time when present
- Phage (with cluster) where this start called: Faja_18 (AY), Hestia_18 (AY), Sashimi_19 (AY), TripleJ_17 (FJ),

Start 9:

- Found in 2 of 30 (6.7%) of genes in pham
- Manual Annotations of this start: 1 of 13
- Called 100.0% of time when present
- Phage (with cluster) where this start called: Bhageatrice_20 (AY), Seahorse_19 (AY),

Start 10:

- Found in 3 of 30 (10.0%) of genes in pham
- No Manual Annotations of this start.
- Called 100.0% of time when present
- Phage (with cluster) where this start called: Globfish_18 (AY), ThayneTheZag_18 (AY), Windest_19 (AY),

Start 11:

- Found in 19 of 30 (63.3%) of genes in pham
- Manual Annotations of this start: 8 of 13
- Called 100.0% of time when present
- Phage (with cluster) where this start called: AdaS_18 (AY), Aikyam_18 (AY), Auxilium_18 (AY), BenchScraper_18 (AY), BlueShadow_19 (AY), CookieBear_19 (AY), Gorpy_18 (AY), Hillester_18 (AY), JellyBread_18 (AY), MUWow_17 (AY), MaterMagnus_18 (AY), MidnightRain_18 (AY), RadFad_18 (AY), Raphaella_18 (AY), Richie_18 (AY), Sakai_18 (AY), SpicyFrank_18 (AY), Vopal_19 (AY), YoungHarleezy_18 (AY),

Start 15:

- Found in 1 of 30 (3.3%) of genes in pham
- No Manual Annotations of this start.
- Called 100.0% of time when present
- Phage (with cluster) where this start called: GUPitcher_16 (FJ),

Start 22:

- Found in 1 of 30 (3.3%) of genes in pham
- Manual Annotations of this start: 1 of 13
- Called 100.0% of time when present
- Phage (with cluster) where this start called: Kukla_16 (FJ),

Summary by clusters:

There are 2 clusters represented in this pham: AY, FJ,

Info for manual annotations of cluster AY:

- Start number 8 was manually annotated 2 times for cluster AY.
- Start number 9 was manually annotated 1 time for cluster AY.
- Start number 11 was manually annotated 8 times for cluster AY.

Info for manual annotations of cluster FJ:

- Start number 8 was manually annotated 1 time for cluster FJ.
- Start number 22 was manually annotated 1 time for cluster FJ.

Gene Information:

Gene: AdaS_18 Start: 10770, Stop: 10531, Start Num: 11

Candidate Starts for AdaS_18:

(6, 10803), (Start: 11 @10770 has 8 MA's), (28, 10680), (40, 10572), (41, 10560),

Gene: Aikyam_18 Start: 10771, Stop: 10532, Start Num: 11

Candidate Starts for Aikyam_18:

(6, 10804), (Start: 11 @10771 has 8 MA's), (28, 10681), (40, 10573), (41, 10561), (42, 10543),

Gene: Auxilium_18 Start: 10770, Stop: 10531, Start Num: 11

Candidate Starts for Auxilium_18:

(6, 10803), (Start: 11 @10770 has 8 MA's), (28, 10680), (40, 10572), (41, 10560),

Gene: BenchScraper_18 Start: 10785, Stop: 10546, Start Num: 11

Candidate Starts for BenchScraper_18:

(6, 10818), (Start: 11 @10785 has 8 MA's), (28, 10695), (40, 10587), (41, 10575),

Gene: Bhageatrice_20 Start: 11974, Stop: 11759, Start Num: 9

Candidate Starts for Bhageatrice_20:

(Start: 9 @11974 has 1 MA's), (34, 11839), (39, 11809),

Gene: BlueShadow_19 Start: 10770, Stop: 10531, Start Num: 11

Candidate Starts for BlueShadow_19:

(6, 10803), (Start: 11 @10770 has 8 MA's), (28, 10680), (40, 10572), (41, 10560),

Gene: CookieBear_19 Start: 10770, Stop: 10531, Start Num: 11

Candidate Starts for CookieBear_19:

(6, 10803), (Start: 11 @10770 has 8 MA's), (28, 10680), (40, 10572), (41, 10560),

Gene: Faja_18 Start: 10960, Stop: 10706, Start Num: 8

Candidate Starts for Faja_18:

(1, 11086), (2, 10996), (4, 10978), (5, 10972), (Start: 8 @10960 has 3 MA's), (19, 10882), (20, 10879), (21, 10876), (23, 10870), (24, 10867), (36, 10774), (40, 10732),

Gene: GUPitcher_16 Start: 10396, Stop: 10196, Start Num: 15

Candidate Starts for GUPitcher_16:

(12, 10414), (13, 10402), (15, 10396), (25, 10345), (27, 10333), (28, 10330), (29, 10312),

Gene: Globfish_18 Start: 10844, Stop: 10605, Start Num: 10

Candidate Starts for Globfish_18:

(3, 10898), (5, 10880), (10, 10844), (26, 10766), (28, 10754), (40, 10646),

Gene: Gorpy_18 Start: 10779, Stop: 10540, Start Num: 11

Candidate Starts for Gorpy_18:

(6, 10812), (Start: 11 @10779 has 8 MA's), (28, 10689), (40, 10581), (41, 10569),

Gene: Hestia_18 Start: 10916, Stop: 10662, Start Num: 8

Candidate Starts for Hestia_18:

(Start: 8 @10916 has 3 MA's), (17, 10841), (19, 10832), (26, 10808), (27, 10799), (32, 10772), (33, 10769), (35, 10730),

Gene: Hillester_18 Start: 10770, Stop: 10531, Start Num: 11

Candidate Starts for Hillester_18:

(6, 10803), (Start: 11 @10770 has 8 MA's), (28, 10680), (40, 10572), (41, 10560),

Gene: JellyBread_18 Start: 10763, Stop: 10524, Start Num: 11

Candidate Starts for JellyBread_18:

(6, 10796), (Start: 11 @10763 has 8 MA's), (28, 10673), (40, 10565), (41, 10553),

Gene: Kukla_16 Start: 10391, Stop: 10224, Start Num: 22

Candidate Starts for Kukla_16:

(14, 10430), (Start: 22 @10391 has 1 MA's), (29, 10346), (31, 10343), (33, 10334), (37, 10289),

Gene: MUWow_17 Start: 10863, Stop: 10624, Start Num: 11

Candidate Starts for MUWow_17:

(6, 10896), (Start: 11 @10863 has 8 MA's), (28, 10773), (40, 10665), (41, 10653),

Gene: MaterMagnus_18 Start: 10771, Stop: 10532, Start Num: 11

Candidate Starts for MaterMagnus_18:

(6, 10804), (Start: 11 @10771 has 8 MA's), (28, 10681), (40, 10573), (41, 10561), (42, 10543),

Gene: MidnightRain_18 Start: 10769, Stop: 10530, Start Num: 11

Candidate Starts for MidnightRain_18:

(6, 10802), (Start: 11 @10769 has 8 MA's), (28, 10679), (40, 10571), (41, 10559),

Gene: RadFad_18 Start: 10770, Stop: 10531, Start Num: 11

Candidate Starts for RadFad_18:

(6, 10803), (Start: 11 @10770 has 8 MA's), (28, 10680), (40, 10572), (41, 10560),

Gene: Raphaella_18 Start: 10770, Stop: 10531, Start Num: 11

Candidate Starts for Raphaella_18:

(6, 10803), (Start: 11 @10770 has 8 MA's), (28, 10680), (40, 10572), (41, 10560),

Gene: Richie_18 Start: 10785, Stop: 10546, Start Num: 11

Candidate Starts for Richie_18:

(6, 10818), (Start: 11 @10785 has 8 MA's), (28, 10695), (40, 10587), (41, 10575),

Gene: Sakai_18 Start: 10779, Stop: 10540, Start Num: 11

Candidate Starts for Sakai_18:

(6, 10812), (Start: 11 @10779 has 8 MA's), (28, 10689), (40, 10581), (41, 10569),

Gene: Sashimi_19 Start: 11077, Stop: 10823, Start Num: 8

Candidate Starts for Sashimi_19:

(2, 11113), (4, 11095), (5, 11089), (Start: 8 @11077 has 3 MA's), (19, 10999), (20, 10996), (21, 10993), (23, 10987), (24, 10984), (36, 10891), (40, 10849),

Gene: Seahorse_19 Start: 11026, Stop: 10805, Start Num: 9

Candidate Starts for Seahorse_19:

(7, 11053), (Start: 9 @11026 has 1 MA's), (23, 10954), (26, 10942), (34, 10891), (35, 10870),

Gene: SpicyFrank_18 Start: 10847, Stop: 10608, Start Num: 11

Candidate Starts for SpicyFrank_18:

(6, 10880), (Start: 11 @10847 has 8 MA's), (26, 10769), (28, 10757), (40, 10649),

Gene: ThayneTheZag_18 Start: 10845, Stop: 10606, Start Num: 10

Candidate Starts for ThayneTheZag_18:

(3, 10899), (5, 10881), (10, 10845), (26, 10767), (28, 10755),

Gene: TripleJ_17 Start: 11025, Stop: 10771, Start Num: 8

Candidate Starts for TripleJ_17:

(Start: 8 @11025 has 3 MA's), (18, 10950), (19, 10944), (23, 10932), (26, 10920), (30, 10890), (32, 10884), (33, 10881), (38, 10827),

Gene: Vopal_19 Start: 10842, Stop: 10603, Start Num: 11

Candidate Starts for Vopal_19:

(6, 10875), (Start: 11 @10842 has 8 MA's), (28, 10752), (41, 10632),

Gene: Windest_19 Start: 10827, Stop: 10588, Start Num: 10

Candidate Starts for Windest_19:

(3, 10881), (5, 10863), (10, 10827), (16, 10785), (28, 10737), (40, 10629), (41, 10617),

Gene: YoungHarleezy_18 Start: 10783, Stop: 10544, Start Num: 11

Candidate Starts for YoungHarleezy_18:

(6, 10816), (Start: 11 @10783 has 8 MA's), (28, 10693), (40, 10585), (41, 10573),