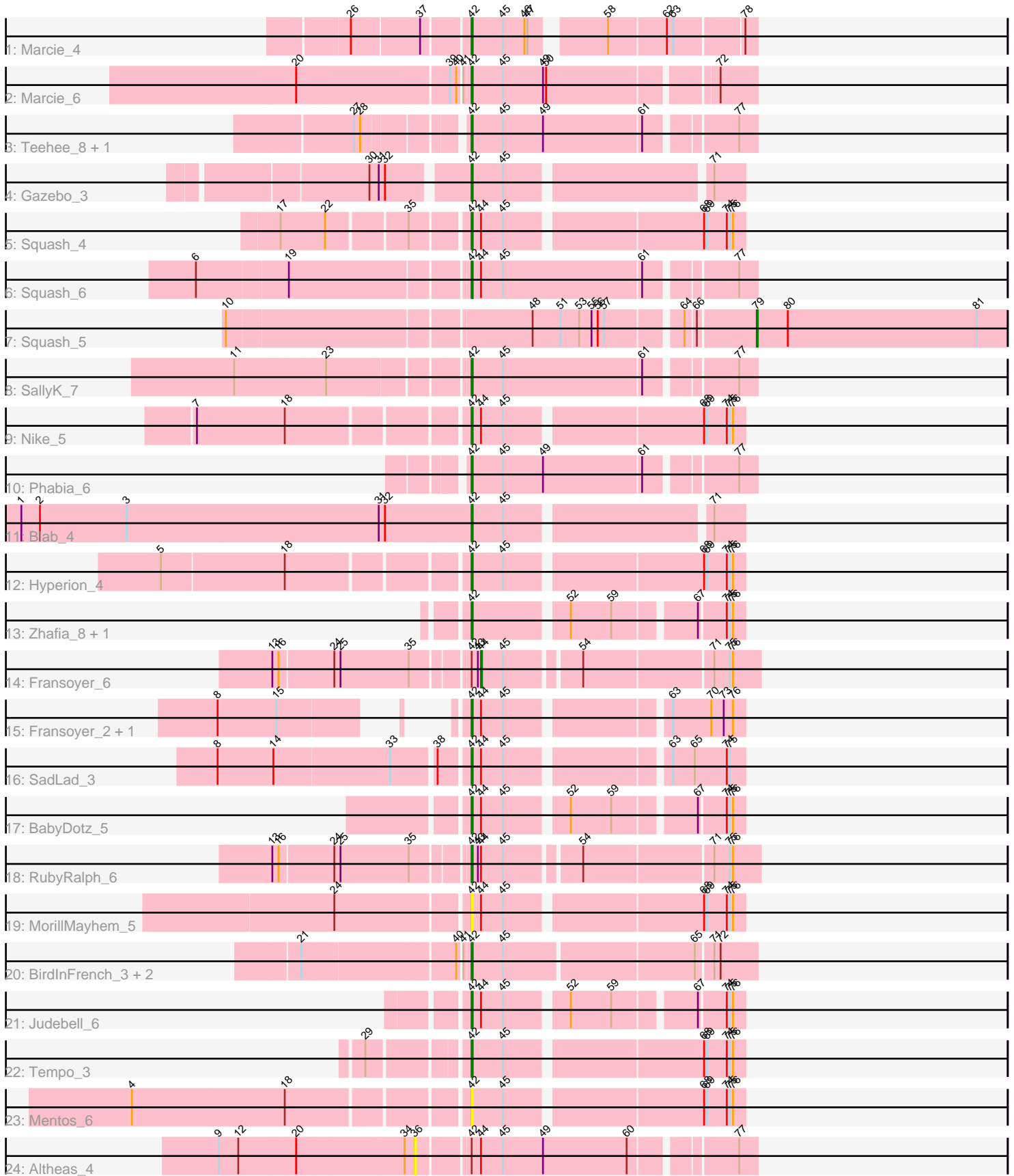


Pham 224811



Note: Tracks are now grouped by subcluster and scaled. Switching in subcluster is indicated by changes in track color. Track scale is now set by default to display the region 30 bp upstream of start 1 to 30 bp downstream of the last possible start. If this default region is judged to be packed too tightly with annotated starts, the track will be further scaled to only show that region of the ORF with annotated starts. This action will be indicated by adding "Zoomed" to the title. For starts, yellow indicates the location of called starts comprised solely of Glimmer/GeneMark auto-annotations, green indicates the location of called starts with at least 1 manual gene annotation.

Pham 224811 Report

This analysis was run 03/28/25 on database version 593.

Pham number 224811 has 29 members, 4 are drafts.

Phages represented in each track:

- Track 1 : Marcie_4
- Track 2 : Marcie_6
- Track 3 : Teehee_8, Jehoshaphat_8
- Track 4 : Gazebo_3
- Track 5 : Squash_4
- Track 6 : Squash_6
- Track 7 : Squash_5
- Track 8 : SallyK_7
- Track 9 : Nike_5
- Track 10 : Phabia_6
- Track 11 : Blab_4
- Track 12 : Hyperion_4
- Track 13 : Zhafia_8, Namago_4
- Track 14 : Fransoyer_6
- Track 15 : Fransoyer_2, RubyRalph_2
- Track 16 : SadLad_3
- Track 17 : BabyDotz_5
- Track 18 : RubyRalph_6
- Track 19 : MorillMayhem_5
- Track 20 : BirdInFrench_3, Wilca_3, Pepe25_2
- Track 21 : Judebell_6
- Track 22 : Tempo_3
- Track 23 : Mentos_6
- Track 24 : Altheas_4

Summary of Final Annotations (See graph section above for start numbers):

The start number called the most often in the published annotations is 42, it was called in 23 of the 25 non-draft genes in the pham.

Genes that call this "Most Annotated" start:

- BabyDotz_5, BirdInFrench_3, Blab_4, Fransoyer_2, Gazebo_3, Hyperion_4, Jehoshaphat_8, Judebell_6, Marcie_4, Marcie_6, Mentos_6, MorillMayhem_5, Namago_4, Nike_5, Pepe25_2, Phabia_6, RubyRalph_2, RubyRalph_6, SadLad_3,

SallyK_7, Squash_4, Squash_6, Teehee_8, Tempo_3, Wilca_3, Zhafia_8,

Genes that have the "Most Annotated" start but do not call it:

- Altheas_4, Fransoyer_6,

Genes that do not have the "Most Annotated" start:

- Squash_5,

Summary by start number:

Start 36:

- Found in 1 of 29 (3.4%) of genes in pham
- No Manual Annotations of this start.
- Called 100.0% of time when present
- Phage (with cluster) where this start called: Altheas_4 (EG),

Start 42:

- Found in 28 of 29 (96.6%) of genes in pham
- Manual Annotations of this start: 23 of 25
- Called 92.9% of time when present
- Phage (with cluster) where this start called: BabyDotz_5 (EG), BirdInFrench_3 (EG), Blab_4 (EG), Fransoyer_2 (EG), Gazebo_3 (EG), Hyperion_4 (EG), Jehoshaphat_8 (EG), Judebell_6 (EG), Marcie_4 (EG), Marcie_6 (EG), Mentos_6 (EG), MorillMayhem_5 (EG), Namago_4 (EG), Nike_5 (EG), Pepe25_2 (EG), Phabia_6 (EG), RubyRalph_2 (EG), RubyRalph_6 (EG), SadLad_3 (EG), SallyK_7 (EG), Squash_4 (EG), Squash_6 (EG), Teehee_8 (EG), Tempo_3 (EG), Wilca_3 (EG), Zhafia_8 (EG),

Start 44:

- Found in 12 of 29 (41.4%) of genes in pham
- Manual Annotations of this start: 1 of 25
- Called 8.3% of time when present
- Phage (with cluster) where this start called: Fransoyer_6 (EG),

Start 79:

- Found in 1 of 29 (3.4%) of genes in pham
- Manual Annotations of this start: 1 of 25
- Called 100.0% of time when present
- Phage (with cluster) where this start called: Squash_5 (EG),

Summary by clusters:

There is one cluster represented in this pham: EG

Info for manual annotations of cluster EG:

- Start number 42 was manually annotated 23 times for cluster EG.
- Start number 44 was manually annotated 1 time for cluster EG.
- Start number 79 was manually annotated 1 time for cluster EG.

Gene Information:

Gene: Altheas_4 Start: 1637, Stop: 1335, Start Num: 36

Candidate Starts for Altheas_4:

(9, 1820), (12, 1802), (20, 1748), (34, 1646), (36, 1637), (Start: 42 @1592 has 23 MA's), (Start: 44 @1583 has 1 MA's), (45, 1562), (49, 1523), (60, 1442), (77, 1352),

Gene: BabyDotz_5 Start: 2093, Stop: 1857, Start Num: 42

Candidate Starts for BabyDotz_5:

(Start: 42 @2093 has 23 MA's), (Start: 44 @2084 has 1 MA's), (45, 2063), (52, 2009), (59, 1970), (67, 1898), (74, 1874), (75, 1871), (76, 1868),

Gene: BirdInFrench_3 Start: 1383, Stop: 1120, Start Num: 42

Candidate Starts for BirdInFrench_3:

(21, 1533), (40, 1392), (41, 1389), (Start: 42 @1383 has 23 MA's), (45, 1353), (65, 1176), (71, 1161), (72, 1155),

Gene: Blab_4 Start: 1367, Stop: 1125, Start Num: 42

Candidate Starts for Blab_4:

(1, 1802), (2, 1784), (3, 1700), (31, 1457), (32, 1451), (Start: 42 @1367 has 23 MA's), (45, 1337), (71, 1154),

Gene: Fransoyer_6 Start: 2120, Stop: 1869, Start Num: 44

Candidate Starts for Fransoyer_6:

(13, 2306), (16, 2300), (24, 2249), (25, 2243), (35, 2177), (Start: 42 @2129 has 23 MA's), (43, 2123), (Start: 44 @2120 has 1 MA's), (45, 2099), (54, 2033), (71, 1913), (75, 1898), (76, 1895),

Gene: Fransoyer_2 Start: 1080, Stop: 841, Start Num: 42

Candidate Starts for Fransoyer_2:

(8, 1230), (15, 1173), (Start: 42 @1080 has 23 MA's), (Start: 44 @1071 has 1 MA's), (45, 1050), (63, 909), (70, 873), (73, 861), (76, 852),

Gene: Gazebo_3 Start: 1551, Stop: 1309, Start Num: 42

Candidate Starts for Gazebo_3:

(30, 1638), (31, 1629), (32, 1623), (Start: 42 @1551 has 23 MA's), (45, 1521), (71, 1338),

Gene: Hyperion_4 Start: 1519, Stop: 1271, Start Num: 42

Candidate Starts for Hyperion_4:

(5, 1795), (18, 1678), (Start: 42 @1519 has 23 MA's), (45, 1489), (68, 1309), (69, 1306), (74, 1288), (75, 1285), (76, 1282),

Gene: Jehoshaphat_8 Start: 2791, Stop: 2534, Start Num: 42

Candidate Starts for Jehoshaphat_8:

(27, 2881), (28, 2875), (Start: 42 @2791 has 23 MA's), (45, 2761), (49, 2722), (61, 2629), (77, 2551),

Gene: Judebell_6 Start: 2078, Stop: 1842, Start Num: 42

Candidate Starts for Judebell_6:

(Start: 42 @2078 has 23 MA's), (Start: 44 @2069 has 1 MA's), (45, 2048), (52, 1994), (59, 1955), (67, 1883), (74, 1859), (75, 1856), (76, 1853),

Gene: Marcie_4 Start: 1305, Stop: 1057, Start Num: 42

Candidate Starts for Marcie_4:

(26, 1410), (37, 1347), (Start: 42 @1305 has 23 MA's), (45, 1275), (46, 1254), (47, 1251), (58, 1191), (62, 1137), (63, 1131), (78, 1068),

Gene: Marcie_6 Start: 1750, Stop: 1493, Start Num: 42

Candidate Starts for Marcie_6:

(20, 1906), (39, 1765), (40, 1759), (41, 1756), (Start: 42 @1750 has 23 MA's), (45, 1720), (49, 1681), (50, 1678), (72, 1528),

Gene: Mentos_6 Start: 1855, Stop: 1607, Start Num: 42

Candidate Starts for Mentos_6:

(4, 2161), (18, 2014), (Start: 42 @1855 has 23 MA's), (45, 1825), (68, 1645), (69, 1642), (74, 1624), (75, 1621), (76, 1618),

Gene: MorillMayhem_5 Start: 1824, Stop: 1576, Start Num: 42

Candidate Starts for MorillMayhem_5:

(24, 1947), (Start: 42 @1824 has 23 MA's), (Start: 44 @1815 has 1 MA's), (45, 1794), (68, 1614), (69, 1611), (74, 1593), (75, 1590), (76, 1587),

Gene: Namago_4 Start: 1406, Stop: 1170, Start Num: 42

Candidate Starts for Namago_4:

(Start: 42 @1406 has 23 MA's), (52, 1322), (59, 1283), (67, 1211), (74, 1187), (75, 1184), (76, 1181),

Gene: Nike_5 Start: 1873, Stop: 1625, Start Num: 42

Candidate Starts for Nike_5:

(7, 2116), (18, 2032), (Start: 42 @1873 has 23 MA's), (Start: 44 @1864 has 1 MA's), (45, 1843), (68, 1663), (69, 1660), (74, 1642), (75, 1639), (76, 1636),

Gene: Pepe25_2 Start: 1383, Stop: 1120, Start Num: 42

Candidate Starts for Pepe25_2:

(21, 1533), (40, 1392), (41, 1389), (Start: 42 @1383 has 23 MA's), (45, 1353), (65, 1176), (71, 1161), (72, 1155),

Gene: Phabia_6 Start: 1993, Stop: 1736, Start Num: 42

Candidate Starts for Phabia_6:

(Start: 42 @1993 has 23 MA's), (45, 1963), (49, 1924), (61, 1831), (77, 1753),

Gene: RubyRalph_6 Start: 2129, Stop: 1869, Start Num: 42

Candidate Starts for RubyRalph_6:

(13, 2306), (16, 2300), (24, 2249), (25, 2243), (35, 2177), (Start: 42 @2129 has 23 MA's), (43, 2123), (Start: 44 @2120 has 1 MA's), (45, 2099), (54, 2033), (71, 1913), (75, 1898), (76, 1895),

Gene: RubyRalph_2 Start: 1080, Stop: 841, Start Num: 42

Candidate Starts for RubyRalph_2:

(8, 1230), (15, 1173), (Start: 42 @1080 has 23 MA's), (Start: 44 @1071 has 1 MA's), (45, 1050), (63, 909), (70, 873), (73, 861), (76, 852),

Gene: SadLad_3 Start: 1311, Stop: 1072, Start Num: 42

Candidate Starts for SadLad_3:

(8, 1542), (14, 1488), (33, 1377), (38, 1338), (Start: 42 @1311 has 23 MA's), (Start: 44 @1302 has 1 MA's), (45, 1281), (63, 1140), (65, 1119), (74, 1089), (75, 1086),

Gene: SallyK_7 Start: 2695, Stop: 2438, Start Num: 42

Candidate Starts for SallyK_7:

(11, 2902), (23, 2818), (Start: 42 @2695 has 23 MA's), (45, 2665), (61, 2533), (77, 2455),

Gene: Squash_4 Start: 1432, Stop: 1184, Start Num: 42

Candidate Starts for Squash_4:

(17, 1597), (22, 1555), (35, 1483), (Start: 42 @1432 has 23 MA's), (Start: 44 @1423 has 1 MA's), (45, 1402), (68, 1222), (69, 1219), (74, 1201), (75, 1198), (76, 1195),

Gene: Squash_6 Start: 1928, Stop: 1671, Start Num: 42

Candidate Starts for Squash_6:

(6, 2171), (19, 2087), (Start: 42 @1928 has 23 MA's), (Start: 44 @1919 has 1 MA's), (45, 1898), (61, 1766), (77, 1688),

Gene: Squash_5 Start: 1671, Stop: 1429, Start Num: 79

Candidate Starts for Squash_5:

(10, 2142), (48, 1869), (51, 1842), (53, 1824), (55, 1812), (56, 1806), (57, 1800), (64, 1734), (66, 1725), (Start: 79 @1671 has 1 MA's), (80, 1641), (81, 1458),

Gene: Teehee_8 Start: 2791, Stop: 2534, Start Num: 42

Candidate Starts for Teehee_8:

(27, 2881), (28, 2875), (Start: 42 @2791 has 23 MA's), (45, 2761), (49, 2722), (61, 2629), (77, 2551),

Gene: Tempo_3 Start: 1126, Stop: 878, Start Num: 42

Candidate Starts for Tempo_3:

(29, 1210), (Start: 42 @1126 has 23 MA's), (45, 1096), (68, 916), (69, 913), (74, 895), (75, 892), (76, 889),

Gene: Wilca_3 Start: 1383, Stop: 1120, Start Num: 42

Candidate Starts for Wilca_3:

(21, 1533), (40, 1392), (41, 1389), (Start: 42 @1383 has 23 MA's), (45, 1353), (65, 1176), (71, 1161), (72, 1155),

Gene: Zhafia_8 Start: 2076, Stop: 1840, Start Num: 42

Candidate Starts for Zhafia_8:

(Start: 42 @2076 has 23 MA's), (52, 1992), (59, 1953), (67, 1881), (74, 1857), (75, 1854), (76, 1851),