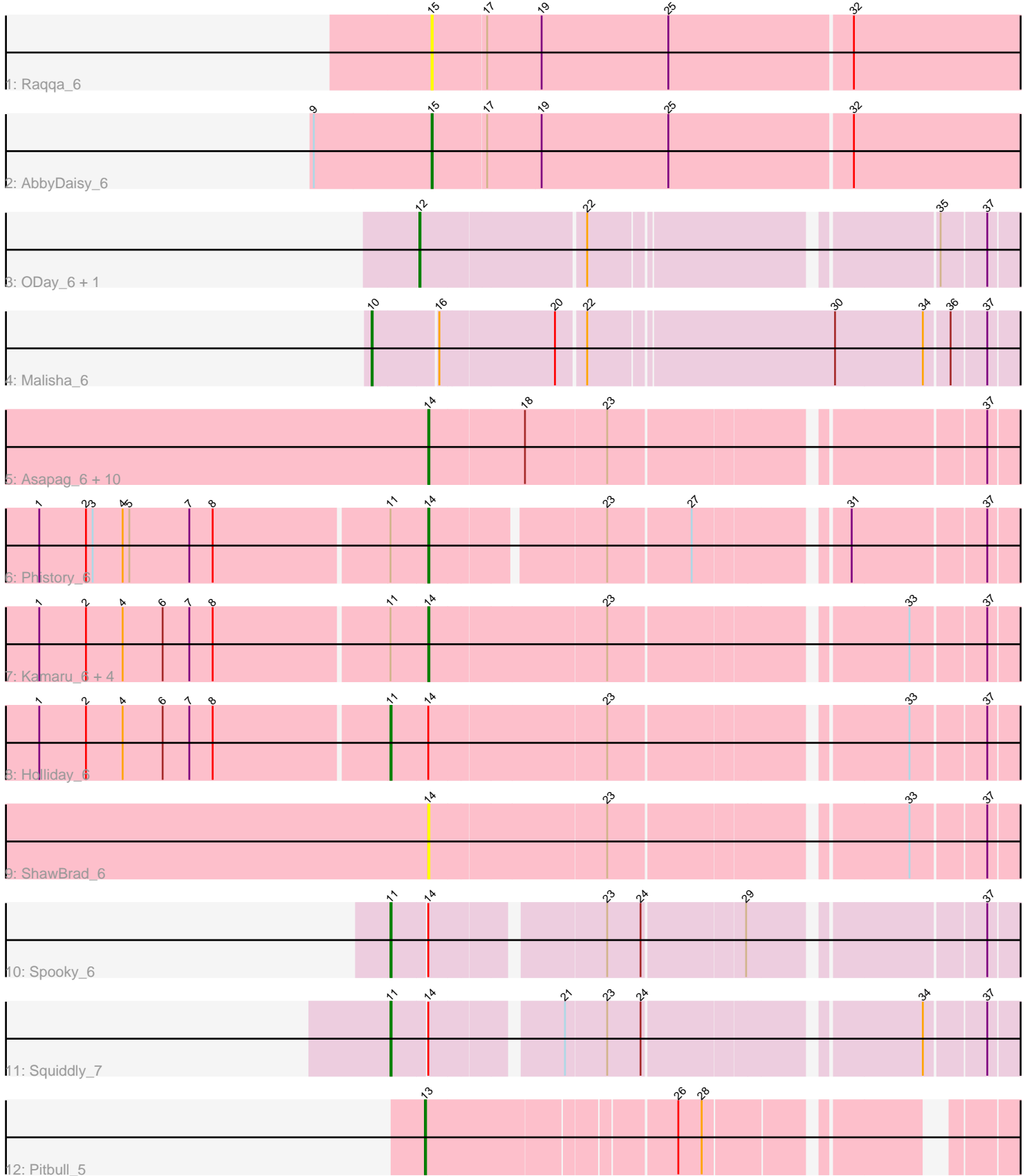


Pham 224818



Note: Tracks are now grouped by subcluster and scaled. Switching in subcluster is indicated by changes in track color. Track scale is now set by default to display the region 30 bp upstream of start 1 to 30 bp downstream of the last possible start. If this default region is judged to be packed too tightly with annotated starts, the track will be further scaled to only show that region of the ORF with annotated starts. This action will be indicated by adding "Zoomed" to the title. For starts, yellow indicates the location of called starts comprised solely of Glimmer/GeneMark auto-annotations, green indicates the location of called starts with at least 1 manual gene annotation.

Pham 224818 Report

This analysis was run 03/28/25 on database version 593.

Pham number 224818 has 27 members, 4 are drafts.

Phages represented in each track:

- Track 1 : Raqqa_6
- Track 2 : AbbyDaisy_6
- Track 3 : ODay_6, Ecliptus_6
- Track 4 : Malisha_6
- Track 5 : Asapag_6, Whitney_6, Getalong_6, Lutum_6, Kenna_6, BotCity_6, BENtherdunthat_6, Leroy_6, Periwinkle_6, Frickyeah_6, Horus_6
- Track 6 : Phistory_6
- Track 7 : Kamaru_6, Budski_6, Phabuloso_6, LitninMcQueen_6, CheeseTouch_6
- Track 8 : Holliday_6
- Track 9 : ShawBrad_6
- Track 10 : Spooky_6
- Track 11 : Squiddly_7
- Track 12 : Pitbull_5

Summary of Final Annotations (See graph section above for start numbers):

The start number called the most often in the published annotations is 14, it was called in 15 of the 23 non-draft genes in the pham.

Genes that call this "Most Annotated" start:

- Asapag_6, BENtherdunthat_6, BotCity_6, Budski_6, CheeseTouch_6, Frickyeah_6, Getalong_6, Horus_6, Kamaru_6, Kenna_6, Leroy_6, LitninMcQueen_6, Lutum_6, Periwinkle_6, Phabuloso_6, Phistory_6, ShawBrad_6, Whitney_6,

Genes that have the "Most Annotated" start but do not call it:

- Holliday_6, Spooky_6, Squiddly_7,

Genes that do not have the "Most Annotated" start:

- AbbyDaisy_6, Ecliptus_6, Malisha_6, ODay_6, Pitbull_5, Raqqa_6,

Summary by start number:

Start 10:

- Found in 1 of 27 (3.7%) of genes in pham

- Manual Annotations of this start: 1 of 23
- Called 100.0% of time when present
- Phage (with cluster) where this start called: Malisha_6 (DN),

Start 11:

- Found in 9 of 27 (33.3%) of genes in pham
- Manual Annotations of this start: 3 of 23
- Called 33.3% of time when present
- Phage (with cluster) where this start called: Holliday_6 (DN1), Spooky_6 (DN2), Squiddly_7 (DN2),

Start 12:

- Found in 2 of 27 (7.4%) of genes in pham
- Manual Annotations of this start: 2 of 23
- Called 100.0% of time when present
- Phage (with cluster) where this start called: Ecliptus_6 (DN), ODay_6 (DN),

Start 13:

- Found in 1 of 27 (3.7%) of genes in pham
- Manual Annotations of this start: 1 of 23
- Called 100.0% of time when present
- Phage (with cluster) where this start called: Pitbull_5 (FQ),

Start 14:

- Found in 21 of 27 (77.8%) of genes in pham
- Manual Annotations of this start: 15 of 23
- Called 85.7% of time when present
- Phage (with cluster) where this start called: Asapag_6 (DN1), BENtherdunthat_6 (DN1), BotCity_6 (DN), Budski_6 (DN), CheeseTouch_6 (DN1), Frickyeah_6 (DN1), Getalong_6 (DN1), Horus_6 (DN1), Kamaru_6 (DN1), Kenna_6 (DN1), Leroy_6 (DN1), LitninMcQueen_6 (DN1), Lutum_6 (DN1), Periwinkle_6 (DN1), Phabuloso_6 (DN1), Phistory_6 (DN1), ShawBrad_6 (DN1), Whitney_6 (DN1),

Start 15:

- Found in 2 of 27 (7.4%) of genes in pham
- Manual Annotations of this start: 1 of 23
- Called 100.0% of time when present
- Phage (with cluster) where this start called: AbbyDaisy_6 (AY), Raqqa_6 (AY),

Summary by clusters:

There are 5 clusters represented in this pham: AY, DN, FQ, DN1, DN2,

Info for manual annotations of cluster AY:

- Start number 15 was manually annotated 1 time for cluster AY.

Info for manual annotations of cluster DN:

- Start number 10 was manually annotated 1 time for cluster DN.
- Start number 12 was manually annotated 2 times for cluster DN.
- Start number 14 was manually annotated 1 time for cluster DN.

Info for manual annotations of cluster DN1:

- Start number 11 was manually annotated 1 time for cluster DN1.

•Start number 14 was manually annotated 14 times for cluster DN1.

Info for manual annotations of cluster DN2:

•Start number 11 was manually annotated 2 times for cluster DN2.

Info for manual annotations of cluster FQ:

•Start number 13 was manually annotated 1 time for cluster FQ.

Gene Information:

Gene: AbbyDaisy_6 Start: 4441, Stop: 5022, Start Num: 15

Candidate Starts for AbbyDaisy_6:

(9, 4336), (Start: 15 @4441 has 1 MA's), (17, 4489), (19, 4537), (25, 4651), (32, 4813),

Gene: Asapag_6 Start: 4327, Stop: 4878, Start Num: 14

Candidate Starts for Asapag_6:

(Start: 14 @4327 has 15 MA's), (18, 4408), (23, 4480), (37, 4786),

Gene: BENtherdunthat_6 Start: 4327, Stop: 4878, Start Num: 14

Candidate Starts for BENtherdunthat_6:

(Start: 14 @4327 has 15 MA's), (18, 4408), (23, 4480), (37, 4786),

Gene: BotCity_6 Start: 4325, Stop: 4876, Start Num: 14

Candidate Starts for BotCity_6:

(Start: 14 @4325 has 15 MA's), (18, 4406), (23, 4478), (37, 4784),

Gene: Budski_6 Start: 4327, Stop: 4875, Start Num: 14

Candidate Starts for Budski_6:

(1, 3985), (2, 4027), (4, 4060), (6, 4096), (7, 4120), (8, 4141), (Start: 11 @4294 has 3 MA's), (Start: 14 @4327 has 15 MA's), (23, 4480), (33, 4723), (37, 4786),

Gene: CheeseTouch_6 Start: 4327, Stop: 4875, Start Num: 14

Candidate Starts for CheeseTouch_6:

(1, 3985), (2, 4027), (4, 4060), (6, 4096), (7, 4120), (8, 4141), (Start: 11 @4294 has 3 MA's), (Start: 14 @4327 has 15 MA's), (23, 4480), (33, 4723), (37, 4786),

Gene: Ecliptus_6 Start: 4342, Stop: 4902, Start Num: 12

Candidate Starts for Ecliptus_6:

(Start: 12 @4342 has 2 MA's), (22, 4483), (35, 4768), (37, 4807),

Gene: Frickyeah_6 Start: 4327, Stop: 4878, Start Num: 14

Candidate Starts for Frickyeah_6:

(Start: 14 @4327 has 15 MA's), (18, 4408), (23, 4480), (37, 4786),

Gene: Getalong_6 Start: 4327, Stop: 4878, Start Num: 14

Candidate Starts for Getalong_6:

(Start: 14 @4327 has 15 MA's), (18, 4408), (23, 4480), (37, 4786),

Gene: Holliday_6 Start: 4294, Stop: 4875, Start Num: 11

Candidate Starts for Holliday_6:

(1, 3985), (2, 4027), (4, 4060), (6, 4096), (7, 4120), (8, 4141), (Start: 11 @4294 has 3 MA's), (Start: 14 @4327 has 15 MA's), (23, 4480), (33, 4723), (37, 4786),

Gene: Horus_6 Start: 4327, Stop: 4878, Start Num: 14

Candidate Starts for Horus_6:

(Start: 14 @4327 has 15 MA's), (18, 4408), (23, 4480), (37, 4786),

Gene: Kamaru_6 Start: 4327, Stop: 4875, Start Num: 14

Candidate Starts for Kamaru_6:

(1, 3985), (2, 4027), (4, 4060), (6, 4096), (7, 4120), (8, 4141), (Start: 11 @4294 has 3 MA's), (Start: 14 @4327 has 15 MA's), (23, 4480), (33, 4723), (37, 4786),

Gene: Kenna_6 Start: 4327, Stop: 4878, Start Num: 14

Candidate Starts for Kenna_6:

(Start: 14 @4327 has 15 MA's), (18, 4408), (23, 4480), (37, 4786),

Gene: Leroy_6 Start: 4328, Stop: 4879, Start Num: 14

Candidate Starts for Leroy_6:

(Start: 14 @4328 has 15 MA's), (18, 4409), (23, 4481), (37, 4787),

Gene: LitninMcQueen_6 Start: 4327, Stop: 4875, Start Num: 14

Candidate Starts for LitninMcQueen_6:

(1, 3985), (2, 4027), (4, 4060), (6, 4096), (7, 4120), (8, 4141), (Start: 11 @4294 has 3 MA's), (Start: 14 @4327 has 15 MA's), (23, 4480), (33, 4723), (37, 4786),

Gene: Lutum_6 Start: 4327, Stop: 4878, Start Num: 14

Candidate Starts for Lutum_6:

(Start: 14 @4327 has 15 MA's), (18, 4408), (23, 4480), (37, 4786),

Gene: Malisha_6 Start: 5305, Stop: 5919, Start Num: 10

Candidate Starts for Malisha_6:

(Start: 10 @5305 has 1 MA's), (16, 5359), (20, 5458), (22, 5482), (30, 5695), (34, 5773), (36, 5794), (37, 5824),

Gene: ODay_6 Start: 4340, Stop: 4900, Start Num: 12

Candidate Starts for ODay_6:

(Start: 12 @4340 has 2 MA's), (22, 4481), (35, 4766), (37, 4805),

Gene: Periwinkle_6 Start: 4327, Stop: 4878, Start Num: 14

Candidate Starts for Periwinkle_6:

(Start: 14 @4327 has 15 MA's), (18, 4408), (23, 4480), (37, 4786),

Gene: Phabuloso_6 Start: 4327, Stop: 4875, Start Num: 14

Candidate Starts for Phabuloso_6:

(1, 3985), (2, 4027), (4, 4060), (6, 4096), (7, 4120), (8, 4141), (Start: 11 @4294 has 3 MA's), (Start: 14 @4327 has 15 MA's), (23, 4480), (33, 4723), (37, 4786),

Gene: Phistory_6 Start: 4325, Stop: 4867, Start Num: 14

Candidate Starts for Phistory_6:

(1, 3986), (2, 4028), (3, 4034), (4, 4061), (5, 4067), (7, 4121), (8, 4142), (Start: 11 @4295 has 3 MA's), (Start: 14 @4325 has 15 MA's), (23, 4469), (27, 4541), (31, 4661), (37, 4775),

Gene: Pitbull_5 Start: 3934, Stop: 4455, Start Num: 13

Candidate Starts for Pitbull_5:
(Start: 13 @3934 has 1 MA's), (26, 4144), (28, 4165),

Gene: Raqqa_6 Start: 4752, Stop: 5333, Start Num: 15
Candidate Starts for Raqqa_6:
(Start: 15 @4752 has 1 MA's), (17, 4800), (19, 4848), (25, 4962), (32, 5124),

Gene: ShawBrad_6 Start: 4327, Stop: 4875, Start Num: 14
Candidate Starts for ShawBrad_6:
(Start: 14 @4327 has 15 MA's), (23, 4480), (33, 4723), (37, 4786),

Gene: Spooky_6 Start: 4301, Stop: 4870, Start Num: 11
Candidate Starts for Spooky_6:
(Start: 11 @4301 has 3 MA's), (Start: 14 @4331 has 15 MA's), (23, 4472), (24, 4502), (29, 4589), (37, 4778),

Gene: Squiddly_7 Start: 4994, Stop: 5563, Start Num: 11
Candidate Starts for Squiddly_7:
(Start: 11 @4994 has 3 MA's), (Start: 14 @5024 has 15 MA's), (21, 5129), (23, 5165), (24, 5195), (34, 5420), (37, 5471),

Gene: Whitney_6 Start: 4327, Stop: 4878, Start Num: 14
Candidate Starts for Whitney_6:
(Start: 14 @4327 has 15 MA's), (18, 4408), (23, 4480), (37, 4786),