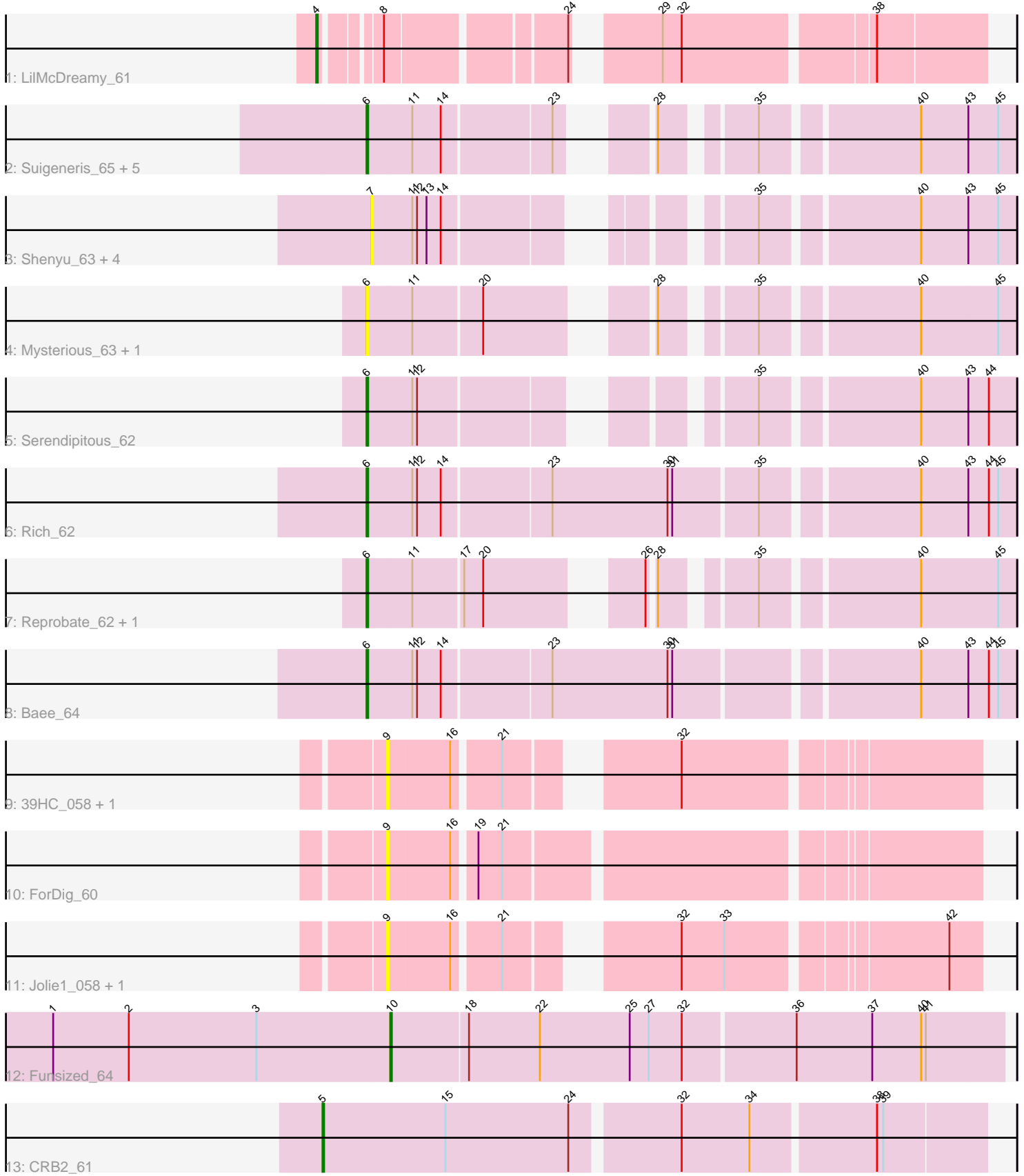


Pham 224831



Note: Tracks are now grouped by subcluster and scaled. Switching in subcluster is indicated by changes in track color. Track scale is now set by default to display the region 30 bp upstream of start 1 to 30 bp downstream of the last possible start. If this default region is judged to be packed too tightly with annotated starts, the track will be further scaled to only show that region of the ORF with annotated starts. This action will be indicated by adding "Zoomed" to the title. For starts, yellow indicates the location of called starts comprised solely of Glimmer/GeneMark auto-annotations, green indicates the location of called starts with at least 1 manual gene annotation.

Pham 224831 Report

This analysis was run 03/28/25 on database version 593.

Pham number 224831 has 26 members, 14 are drafts.

Phages represented in each track:

- Track 1 : LilMcDreamy_61
- Track 2 : Suigeneris_65, SirJeffery_63, Acadian_64, Rita130_63, EastView9101_63, Donny_65
- Track 3 : Shenyu_63, KarasumaRum_63, Nangang_63, DigitDog_64, StinkyVeggy_63
- Track 4 : Mysterious_63, Nehemiah_62
- Track 5 : Serendipitous_62
- Track 6 : Rich_62
- Track 7 : Reprobate_62, Phelemich_61
- Track 8 : Bae_64
- Track 9 : 39HC_058, 40BC_058
- Track 10 : ForDig_60
- Track 11 : Jolie1_058, Hosp_056
- Track 12 : Funsized_64
- Track 13 : CRB2_61

Summary of Final Annotations (See graph section above for start numbers):

The start number called the most often in the published annotations is 6, it was called in 9 of the 12 non-draft genes in the pham.

Genes that call this "Most Annotated" start:

- Acadian_64, Bae_64, Donny_65, EastView9101_63, Mysterious_63, Nehemiah_62, Phelemich_61, Reprobate_62, Rich_62, Rita130_63, Serendipitous_62, SirJeffery_63, Suigeneris_65,

Genes that have the "Most Annotated" start but do not call it:

-

Genes that do not have the "Most Annotated" start:

- 39HC_058, 40BC_058, CRB2_61, DigitDog_64, ForDig_60, Funsized_64, Hosp_056, Jolie1_058, KarasumaRum_63, LilMcDreamy_61, Nangang_63, Shenyu_63, StinkyVeggy_63,

Summary by start number:

Start 4:

- Found in 1 of 26 (3.8%) of genes in pham
- Manual Annotations of this start: 1 of 12
- Called 100.0% of time when present
- Phage (with cluster) where this start called: LilMcDreamy_61 (B12),

Start 5:

- Found in 1 of 26 (3.8%) of genes in pham
- Manual Annotations of this start: 1 of 12
- Called 100.0% of time when present
- Phage (with cluster) where this start called: CRB2_61 (B9),

Start 6:

- Found in 13 of 26 (50.0%) of genes in pham
- Manual Annotations of this start: 9 of 12
- Called 100.0% of time when present
- Phage (with cluster) where this start called: Acadian_64 (B5), Bae_64 (B5), Donny_65 (B5), EastView9101_63 (B5), Mysterious_63 (B5), Nehemiah_62 (B5), Phelemich_61 (B5), Reprobate_62 (B5), Rich_62 (B5), Rita130_63 (B5), Serendipitous_62 (B5), SirJeffery_63 (B5), Suigeneris_65 (B5),

Start 7:

- Found in 5 of 26 (19.2%) of genes in pham
- No Manual Annotations of this start.
- Called 100.0% of time when present
- Phage (with cluster) where this start called: DigitDog_64 (B5), KarasumaRum_63 (B5), Nangang_63 (B5), Shenyu_63 (B5), StinkyVeggy_63 (B5),

Start 9:

- Found in 5 of 26 (19.2%) of genes in pham
- No Manual Annotations of this start.
- Called 100.0% of time when present
- Phage (with cluster) where this start called: 39HC_058 (B6), 40BC_058 (B6), ForDig_60 (B6), Hosp_056 (B6), Jolie1_058 (B6),

Start 10:

- Found in 1 of 26 (3.8%) of genes in pham
- Manual Annotations of this start: 1 of 12
- Called 100.0% of time when present
- Phage (with cluster) where this start called: Funsized_64 (B9),

Summary by clusters:

There are 4 clusters represented in this pham: B5, B6, B12, B9,

Info for manual annotations of cluster B12:

- Start number 4 was manually annotated 1 time for cluster B12.

Info for manual annotations of cluster B5:

- Start number 6 was manually annotated 9 times for cluster B5.

Info for manual annotations of cluster B9:

- Start number 5 was manually annotated 1 time for cluster B9.
- Start number 10 was manually annotated 1 time for cluster B9.

Gene Information:

Gene: 39HC_058 Start: 54678, Stop: 54355, Start Num: 9

Candidate Starts for 39HC_058:

(9, 54678), (16, 54639), (21, 54612), (32, 54528),

Gene: 40BC_058 Start: 54678, Stop: 54355, Start Num: 9

Candidate Starts for 40BC_058:

(9, 54678), (16, 54639), (21, 54612), (32, 54528),

Gene: Acadian_64 Start: 56676, Stop: 56335, Start Num: 6

Candidate Starts for Acadian_64:

(Start: 6 @56676 has 9 MA's), (11, 56649), (14, 56631), (23, 56565), (28, 56532), (35, 56484), (40, 56394), (43, 56364), (45, 56346),

Gene: Bae_64 Start: 57648, Stop: 57262, Start Num: 6

Candidate Starts for Bae_64:

(Start: 6 @57648 has 9 MA's), (11, 57621), (12, 57618), (14, 57603), (23, 57537), (30, 57465), (31, 57462), (40, 57321), (43, 57291), (44, 57279), (45, 57273),

Gene: CRB2_61 Start: 57387, Stop: 56986, Start Num: 5

Candidate Starts for CRB2_61:

(Start: 5 @57387 has 1 MA's), (15, 57309), (24, 57231), (32, 57168), (34, 57126), (38, 57051), (39, 57048),

Gene: DigitDog_64 Start: 56730, Stop: 56395, Start Num: 7

Candidate Starts for DigitDog_64:

(7, 56730), (11, 56706), (12, 56703), (13, 56697), (14, 56688), (35, 56544), (40, 56454), (43, 56424), (45, 56406),

Gene: Donny_65 Start: 56722, Stop: 56381, Start Num: 6

Candidate Starts for Donny_65:

(Start: 6 @56722 has 9 MA's), (11, 56695), (14, 56677), (23, 56611), (28, 56578), (35, 56530), (40, 56440), (43, 56410), (45, 56392),

Gene: EastView9101_63 Start: 56420, Stop: 56079, Start Num: 6

Candidate Starts for EastView9101_63:

(Start: 6 @56420 has 9 MA's), (11, 56393), (14, 56375), (23, 56309), (28, 56276), (35, 56228), (40, 56138), (43, 56108), (45, 56090),

Gene: ForDig_60 Start: 55009, Stop: 54668, Start Num: 9

Candidate Starts for ForDig_60:

(9, 55009), (16, 54970), (19, 54958), (21, 54943),

Gene: Funsized_64 Start: 58606, Stop: 58226, Start Num: 10

Candidate Starts for Funsized_64:

(1, 58819), (2, 58771), (3, 58690), (Start: 10 @58606 has 1 MA's), (18, 58558), (22, 58513), (25, 58456), (27, 58444), (32, 58423), (36, 58354), (37, 58306), (40, 58276), (41, 58273),

Gene: Hosp_056 Start: 52913, Stop: 52590, Start Num: 9

Candidate Starts for Hosp_056:

(9, 52913), (16, 52874), (21, 52847), (32, 52763), (33, 52736), (42, 52610),

Gene: Jolie1_058 Start: 54813, Stop: 54490, Start Num: 9

Candidate Starts for Jolie1_058:

(9, 54813), (16, 54774), (21, 54747), (32, 54663), (33, 54636), (42, 54510),

Gene: KarasumaRum_63 Start: 56576, Stop: 56241, Start Num: 7

Candidate Starts for KarasumaRum_63:

(7, 56576), (11, 56552), (12, 56549), (13, 56543), (14, 56534), (35, 56390), (40, 56300), (43, 56270), (45, 56252),

Gene: LilMcDreamy_61 Start: 56322, Stop: 55963, Start Num: 4

Candidate Starts for LilMcDreamy_61:

(Start: 4 @56322 has 1 MA's), (8, 56292), (24, 56190), (29, 56151), (32, 56139), (38, 56028),

Gene: Mysterious_63 Start: 56569, Stop: 56225, Start Num: 6

Candidate Starts for Mysterious_63:

(Start: 6 @56569 has 9 MA's), (11, 56542), (20, 56500), (28, 56422), (35, 56374), (40, 56284), (45, 56236),

Gene: Nangang_63 Start: 56756, Stop: 56421, Start Num: 7

Candidate Starts for Nangang_63:

(7, 56756), (11, 56732), (12, 56729), (13, 56723), (14, 56714), (35, 56570), (40, 56480), (43, 56450), (45, 56432),

Gene: Nehemiah_62 Start: 56572, Stop: 56228, Start Num: 6

Candidate Starts for Nehemiah_62:

(Start: 6 @56572 has 9 MA's), (11, 56545), (20, 56503), (28, 56425), (35, 56377), (40, 56287), (45, 56239),

Gene: Phelemich_61 Start: 56567, Stop: 56223, Start Num: 6

Candidate Starts for Phelemich_61:

(Start: 6 @56567 has 9 MA's), (11, 56540), (17, 56510), (20, 56498), (26, 56423), (28, 56420), (35, 56372), (40, 56282), (45, 56234),

Gene: Reprobate_62 Start: 56572, Stop: 56228, Start Num: 6

Candidate Starts for Reprobate_62:

(Start: 6 @56572 has 9 MA's), (11, 56545), (17, 56515), (20, 56503), (26, 56428), (28, 56425), (35, 56377), (40, 56287), (45, 56239),

Gene: Rich_62 Start: 57709, Stop: 57323, Start Num: 6

Candidate Starts for Rich_62:

(Start: 6 @57709 has 9 MA's), (11, 57682), (12, 57679), (14, 57664), (23, 57598), (30, 57526), (31, 57523), (35, 57472), (40, 57382), (43, 57352), (44, 57340), (45, 57334),

Gene: Rita130_63 Start: 56618, Stop: 56277, Start Num: 6

Candidate Starts for Rita130_63:

(Start: 6 @56618 has 9 MA's), (11, 56591), (14, 56573), (23, 56507), (28, 56474), (35, 56426), (40, 56336), (43, 56306), (45, 56288),

Gene: Serendipitous_62 Start: 56107, Stop: 55766, Start Num: 6

Candidate Starts for Serendipitous_62:

(Start: 6 @56107 has 9 MA's), (11, 56080), (12, 56077), (35, 55915), (40, 55825), (43, 55795), (44, 55783),

Gene: Shenyu_63 Start: 56833, Stop: 56498, Start Num: 7

Candidate Starts for Shenyu_63:

(7, 56833), (11, 56809), (12, 56806), (13, 56800), (14, 56791), (35, 56647), (40, 56557), (43, 56527), (45, 56509),

Gene: SirJeffery_63 Start: 56753, Stop: 56412, Start Num: 6

Candidate Starts for SirJeffery_63:

(Start: 6 @56753 has 9 MA's), (11, 56726), (14, 56708), (23, 56642), (28, 56609), (35, 56561), (40, 56471), (43, 56441), (45, 56423),

Gene: StinkyVeggy_63 Start: 56576, Stop: 56241, Start Num: 7

Candidate Starts for StinkyVeggy_63:

(7, 56576), (11, 56552), (12, 56549), (13, 56543), (14, 56534), (35, 56390), (40, 56300), (43, 56270), (45, 56252),

Gene: Suigeneris_65 Start: 56871, Stop: 56530, Start Num: 6

Candidate Starts for Suigeneris_65:

(Start: 6 @56871 has 9 MA's), (11, 56844), (14, 56826), (23, 56760), (28, 56727), (35, 56679), (40, 56589), (43, 56559), (45, 56541),