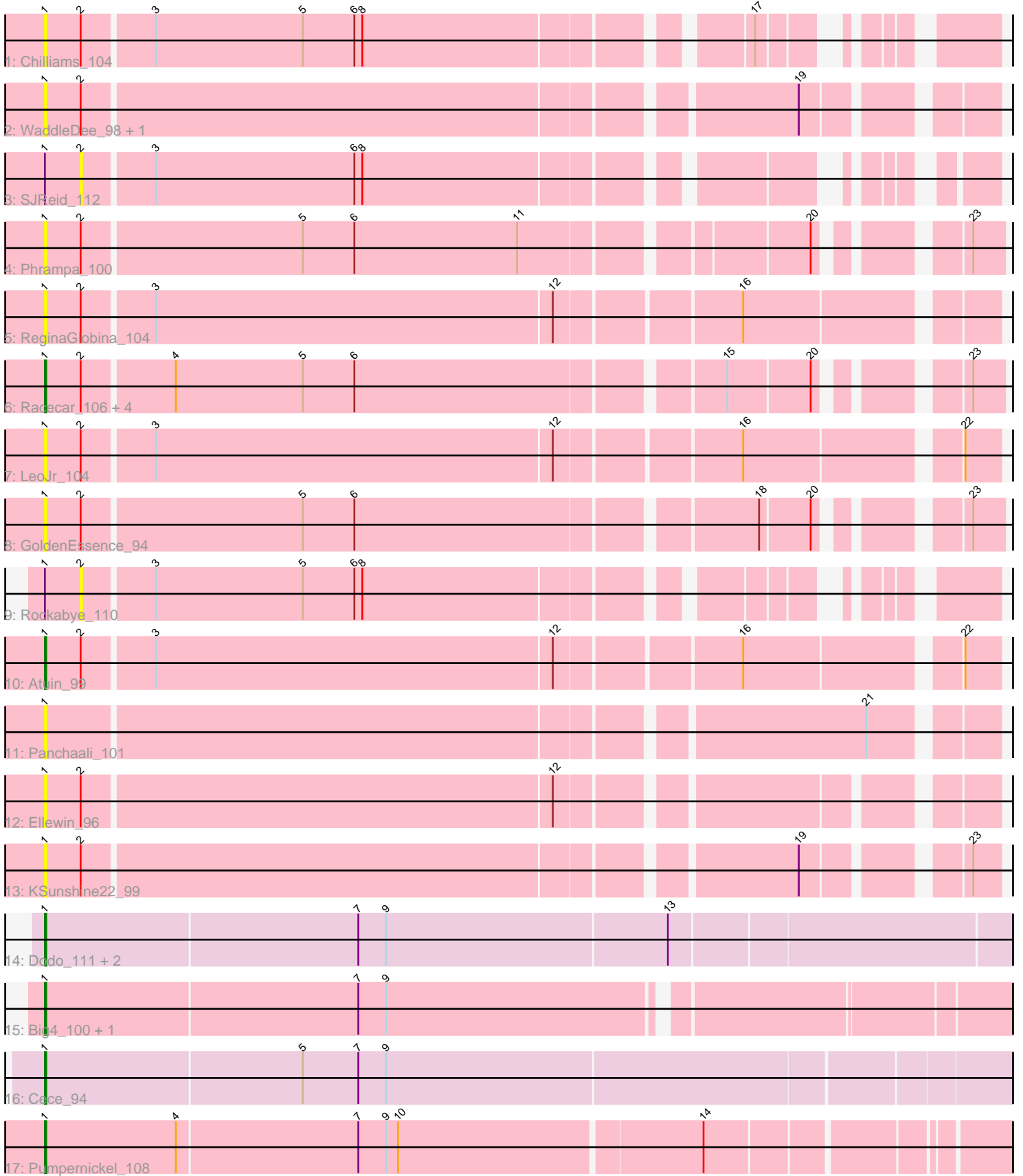


Pham 224837



Note: Tracks are now grouped by subcluster and scaled. Switching in subcluster is indicated by changes in track color. Track scale is now set by default to display the region 30 bp upstream of start 1 to 30 bp downstream of the last possible start. If this default region is judged to be packed too tightly with annotated starts, the track will be further scaled to only show that region of the ORF with annotated starts. This action will be indicated by adding "Zoomed" to the title. For starts, yellow indicates the location of called starts comprised solely of Glimmer/GeneMark auto-annotations, green indicates the location of called starts with at least 1 manual gene annotation.

Pham 224837 Report

This analysis was run 03/28/25 on database version 593.

Pham number 224837 has 25 members, 15 are drafts.

Phages represented in each track:

- Track 1 : Chilliams_104
- Track 2 : WaddleDee_98, DunneganBoMo_98
- Track 3 : SJReid_112
- Track 4 : Phrampa_100
- Track 5 : ReginaGlobina_104
- Track 6 : Racecar_106, Mimi_105, Talia1610_105, Bloom_109, Patbob_106
- Track 7 : LeoJr_104
- Track 8 : GoldenEssence_94
- Track 9 : Rockabye_110
- Track 10 : Atuin_99
- Track 11 : Panchaali_101
- Track 12 : Ellewin_96
- Track 13 : KSunshine22_99
- Track 14 : Dodo_111, PauloDiaboli_111, A3Wally_111
- Track 15 : Big4_100, Zooman_95
- Track 16 : Cece_94
- Track 17 : Pumpernickel_108

Summary of Final Annotations (See graph section above for start numbers):

The start number called the most often in the published annotations is 1, it was called in 10 of the 10 non-draft genes in the pham.

Genes that call this "Most Annotated" start:

- A3Wally_111, Atuin_99, Big4_100, Bloom_109, Cece_94, Chilliams_104, Dodo_111, DunneganBoMo_98, Ellewin_96, GoldenEssence_94, KSunshine22_99, LeoJr_104, Mimi_105, Panchaali_101, Patbob_106, PauloDiaboli_111, Phrampa_100, Pumpernickel_108, Racecar_106, ReginaGlobina_104, Talia1610_105, WaddleDee_98, Zooman_95,

Genes that have the "Most Annotated" start but do not call it:

- Rockabye_110, SJReid_112,

Genes that do not have the "Most Annotated" start:

•

Summary by start number:

Start 1:

- Found in 25 of 25 (100.0%) of genes in pham
- Manual Annotations of this start: 10 of 10
- Called 92.0% of time when present
- Phage (with cluster) where this start called: A3Wally_111 (GD1), Atuin_99 (FC), Big4_100 (GD2), Bloom_109 (FC), Cece_94 (GD3), Chilliams_104 (FC), Dodo_111 (GD1), DunneganBoMo_98 (FC), Ellewin_96 (FC), GoldenEssence_94 (FC), KSunshine22_99 (FC), LeoJr_104 (FC), Mimi_105 (FC), Panchaali_101 (FC), Patbob_106 (FC), PauloDiaboli_111 (GD1), Phrampa_100 (FC), Pumpernickel_108 (GD4), Racecar_106 (FC), ReginaGlobina_104 (FC), Talia1610_105 (FC), WaddleDee_98 (FC), Zooman_95 (GD2),

Start 2:

- Found in 17 of 25 (68.0%) of genes in pham
- No Manual Annotations of this start.
- Called 11.8% of time when present
- Phage (with cluster) where this start called: Rockabye_110 (FC), SJReid_112 (FC),

Summary by clusters:

There are 5 clusters represented in this pham: GD3, GD1, GD2, FC, GD4,

Info for manual annotations of cluster FC:

- Start number 1 was manually annotated 4 times for cluster FC.

Info for manual annotations of cluster GD1:

- Start number 1 was manually annotated 2 times for cluster GD1.

Info for manual annotations of cluster GD2:

- Start number 1 was manually annotated 2 times for cluster GD2.

Info for manual annotations of cluster GD3:

- Start number 1 was manually annotated 1 time for cluster GD3.

Info for manual annotations of cluster GD4:

- Start number 1 was manually annotated 1 time for cluster GD4.

Gene Information:

Gene: A3Wally_111 Start: 75589, Stop: 74876, Start Num: 1

Candidate Starts for A3Wally_111:

(Start: 1 @75589 has 10 MA's), (7, 75355), (9, 75334), (13, 75127),

Gene: Atuin_99 Start: 85221, Stop: 85898, Start Num: 1

Candidate Starts for Atuin_99:

(Start: 1 @85221 has 10 MA's), (2, 85248), (3, 85299), (12, 85596), (16, 85725), (22, 85872),

Gene: Big4_100 Start: 74707, Stop: 74009, Start Num: 1
Candidate Starts for Big4_100:
(Start: 1 @74707 has 10 MA's), (7, 74473), (9, 74452),

Gene: Bloom_109 Start: 85355, Stop: 86011, Start Num: 1
Candidate Starts for Bloom_109:
(Start: 1 @85355 has 10 MA's), (2, 85382), (4, 85448), (5, 85544), (6, 85583), (15, 85844), (20, 85904),
(23, 85988),

Gene: Cece_94 Start: 77750, Stop: 77037, Start Num: 1
Candidate Starts for Cece_94:
(Start: 1 @77750 has 10 MA's), (5, 77558), (7, 77516), (9, 77495),

Gene: Chilliams_104 Start: 78152, Stop: 78772, Start Num: 1
Candidate Starts for Chilliams_104:
(Start: 1 @78152 has 10 MA's), (2, 78179), (3, 78230), (5, 78341), (6, 78380), (8, 78386), (17, 78647),

Gene: Dodo_111 Start: 75911, Stop: 75198, Start Num: 1
Candidate Starts for Dodo_111:
(Start: 1 @75911 has 10 MA's), (7, 75677), (9, 75656), (13, 75449),

Gene: DunneganBoMo_98 Start: 81122, Stop: 81781, Start Num: 1
Candidate Starts for DunneganBoMo_98:
(Start: 1 @81122 has 10 MA's), (2, 81149), (19, 81659),

Gene: Ellewin_96 Start: 80533, Stop: 81192, Start Num: 1
Candidate Starts for Ellewin_96:
(Start: 1 @80533 has 10 MA's), (2, 80560), (12, 80908),

Gene: GoldenEssence_94 Start: 79147, Stop: 79803, Start Num: 1
Candidate Starts for GoldenEssence_94:
(Start: 1 @79147 has 10 MA's), (2, 79174), (5, 79336), (6, 79375), (18, 79660), (20, 79696), (23,
79780),

Gene: KSunshine22_99 Start: 82134, Stop: 82793, Start Num: 1
Candidate Starts for KSunshine22_99:
(Start: 1 @82134 has 10 MA's), (2, 82161), (19, 82671), (23, 82773),

Gene: LeoJr_104 Start: 85456, Stop: 86133, Start Num: 1
Candidate Starts for LeoJr_104:
(Start: 1 @85456 has 10 MA's), (2, 85483), (3, 85534), (12, 85831), (16, 85960), (22, 86107),

Gene: Mimi_105 Start: 84702, Stop: 85358, Start Num: 1
Candidate Starts for Mimi_105:
(Start: 1 @84702 has 10 MA's), (2, 84729), (4, 84795), (5, 84891), (6, 84930), (15, 85191), (20, 85251),
(23, 85335),

Gene: Panchaali_101 Start: 82099, Stop: 82770, Start Num: 1
Candidate Starts for Panchaali_101:
(Start: 1 @82099 has 10 MA's), (21, 82687),

Gene: Patbob_106 Start: 85437, Stop: 86093, Start Num: 1
Candidate Starts for Patbob_106:

(Start: 1 @85437 has 10 MA's), (2, 85464), (4, 85530), (5, 85626), (6, 85665), (15, 85926), (20, 85986), (23, 86070),

Gene: PauloDiaboli_111 Start: 74946, Stop: 74233, Start Num: 1
Candidate Starts for PauloDiaboli_111:
(Start: 1 @74946 has 10 MA's), (7, 74712), (9, 74691), (13, 74484),

Gene: Phrampa_100 Start: 86836, Stop: 87489, Start Num: 1
Candidate Starts for Phrampa_100:
(Start: 1 @86836 has 10 MA's), (2, 86863), (5, 87025), (6, 87064), (11, 87187), (20, 87382), (23, 87466),

Gene: Pumpernickel_108 Start: 76513, Stop: 75818, Start Num: 1
Candidate Starts for Pumpernickel_108:
(Start: 1 @76513 has 10 MA's), (4, 76414), (7, 76279), (9, 76258), (10, 76249), (14, 76027),

Gene: Racecar_106 Start: 85355, Stop: 86011, Start Num: 1
Candidate Starts for Racecar_106:
(Start: 1 @85355 has 10 MA's), (2, 85382), (4, 85448), (5, 85544), (6, 85583), (15, 85844), (20, 85904), (23, 85988),

Gene: ReginaGlobina_104 Start: 85021, Stop: 85698, Start Num: 1
Candidate Starts for ReginaGlobina_104:
(Start: 1 @85021 has 10 MA's), (2, 85048), (3, 85099), (12, 85396), (16, 85525),

Gene: Rockabye_110 Start: 78617, Stop: 79210, Start Num: 2
Candidate Starts for Rockabye_110:
(Start: 1 @78590 has 10 MA's), (2, 78617), (3, 78668), (5, 78779), (6, 78818), (8, 78824),

Gene: SJReid_112 Start: 77654, Stop: 78247, Start Num: 2
Candidate Starts for SJReid_112:
(Start: 1 @77627 has 10 MA's), (2, 77654), (3, 77705), (6, 77855), (8, 77861),

Gene: Talia1610_105 Start: 84720, Stop: 85376, Start Num: 1
Candidate Starts for Talia1610_105:
(Start: 1 @84720 has 10 MA's), (2, 84747), (4, 84813), (5, 84909), (6, 84948), (15, 85209), (20, 85269), (23, 85353),

Gene: WaddleDee_98 Start: 80308, Stop: 80967, Start Num: 1
Candidate Starts for WaddleDee_98:
(Start: 1 @80308 has 10 MA's), (2, 80335), (19, 80845),

Gene: Zooman_95 Start: 72552, Stop: 71857, Start Num: 1
Candidate Starts for Zooman_95:
(Start: 1 @72552 has 10 MA's), (7, 72318), (9, 72297),