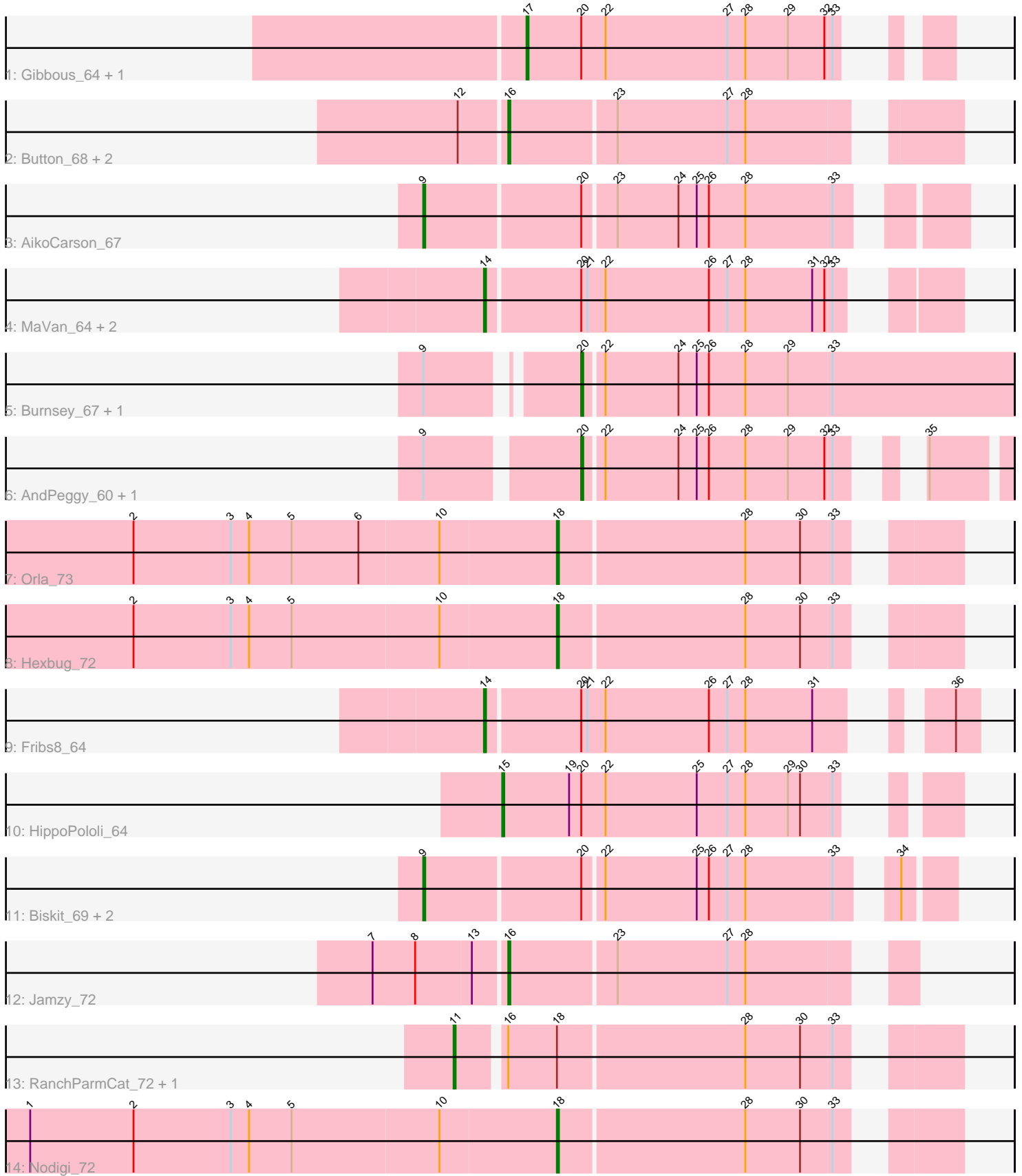


Pham 224845



Note: Tracks are now grouped by subcluster and scaled. Switching in subcluster is indicated by changes in track color. Track scale is now set by default to display the region 30 bp upstream of start 1 to 30 bp downstream of the last possible start. If this default region is judged to be packed too tightly with annotated starts, the track will be further scaled to only show that region of the ORF with annotated starts. This action will be indicated by adding "Zoomed" to the title. For starts, yellow indicates the location of called starts comprised solely of Glimmer/GeneMark auto-annotations, green indicates the location of called starts with at least 1 manual gene annotation.

Pham 224845 Report

This analysis was run 03/28/25 on database version 593.

Pham number 224845 has 24 members, 1 are drafts.

Phages represented in each track:

- Track 1 : Gibbous_64, Dre3_64
- Track 2 : Button_68, Yakult_71, GiKK_72
- Track 3 : AikoCarson_67
- Track 4 : MaVan_64, Azira_64, Survivors_66
- Track 5 : Burnsey_67, Quasar_68
- Track 6 : AndPeggy_60, Yarn_61
- Track 7 : Orla_73
- Track 8 : Hexbug_72
- Track 9 : Fribs8_64
- Track 10 : HippoPololi_64
- Track 11 : Biskit_69, SketchMex_67, Blondies_72
- Track 12 : Jamzy_72
- Track 13 : RanchParmCat_72, Margaret_73
- Track 14 : Nodigi_72

Summary of Final Annotations (See graph section above for start numbers):

The start number called the most often in the published annotations is 14, it was called in 4 of the 23 non-draft genes in the pham.

Genes that call this "Most Annotated" start:

- Azira_64, Fribs8_64, MaVan_64, Survivors_66,

Genes that have the "Most Annotated" start but do not call it:

-

Genes that do not have the "Most Annotated" start:

- AikoCarson_67, AndPeggy_60, Biskit_69, Blondies_72, Burnsey_67, Button_68, Dre3_64, GiKK_72, Gibbous_64, Hexbug_72, HippoPololi_64, Jamzy_72, Margaret_73, Nodigi_72, Orla_73, Quasar_68, RanchParmCat_72, SketchMex_67, Yakult_71, Yarn_61,

Summary by start number:

Start 9:

- Found in 8 of 24 (33.3%) of genes in pham
- Manual Annotations of this start: 3 of 23
- Called 50.0% of time when present
- Phage (with cluster) where this start called: AikoCarson_67 (CT), Biskit_69 (CT), Blondies_72 (CT), SketchMex_67 (CT),

Start 11:

- Found in 2 of 24 (8.3%) of genes in pham
- Manual Annotations of this start: 2 of 23
- Called 100.0% of time when present
- Phage (with cluster) where this start called: Margaret_73 (CT), RanchParmCat_72 (CT),

Start 14:

- Found in 4 of 24 (16.7%) of genes in pham
- Manual Annotations of this start: 4 of 23
- Called 100.0% of time when present
- Phage (with cluster) where this start called: Azira_64 (CT), Fribs8_64 (CT), MaVan_64 (CT), Survivors_66 (CT),

Start 15:

- Found in 1 of 24 (4.2%) of genes in pham
- Manual Annotations of this start: 1 of 23
- Called 100.0% of time when present
- Phage (with cluster) where this start called: HippoPololi_64 (CT),

Start 16:

- Found in 6 of 24 (25.0%) of genes in pham
- Manual Annotations of this start: 4 of 23
- Called 66.7% of time when present
- Phage (with cluster) where this start called: Button_68 (CT), GiKK_72 (CT), Jamzy_72 (CT), Yakult_71 (CT),

Start 17:

- Found in 2 of 24 (8.3%) of genes in pham
- Manual Annotations of this start: 2 of 23
- Called 100.0% of time when present
- Phage (with cluster) where this start called: Dre3_64 (CT), Gibbous_64 (CT),

Start 18:

- Found in 5 of 24 (20.8%) of genes in pham
- Manual Annotations of this start: 3 of 23
- Called 60.0% of time when present
- Phage (with cluster) where this start called: Hexbug_72 (CT), Nodigi_72 (CT), Orla_73 (CT),

Start 20:

- Found in 15 of 24 (62.5%) of genes in pham
- Manual Annotations of this start: 4 of 23
- Called 26.7% of time when present
- Phage (with cluster) where this start called: AndPeggy_60 (CT), Burnsey_67 (CT), Quasar_68 (CT), Yarn_61 (CT),

Summary by clusters:

There is one cluster represented in this pham: CT

Info for manual annotations of cluster CT:

- Start number 9 was manually annotated 3 times for cluster CT.
- Start number 11 was manually annotated 2 times for cluster CT.
- Start number 14 was manually annotated 4 times for cluster CT.
- Start number 15 was manually annotated 1 time for cluster CT.
- Start number 16 was manually annotated 4 times for cluster CT.
- Start number 17 was manually annotated 2 times for cluster CT.
- Start number 18 was manually annotated 3 times for cluster CT.
- Start number 20 was manually annotated 4 times for cluster CT.

Gene Information:

Gene: AikoCarson_67 Start: 44165, Stop: 44407, Start Num: 9

Candidate Starts for AikoCarson_67:

(Start: 9 @44165 has 3 MA's), (Start: 20 @44240 has 4 MA's), (23, 44255), (24, 44285), (25, 44294), (26, 44300), (28, 44318), (33, 44360),

Gene: AndPeggy_60 Start: 43276, Stop: 43449, Start Num: 20

Candidate Starts for AndPeggy_60:

(Start: 9 @43207 has 3 MA's), (Start: 20 @43276 has 4 MA's), (22, 43285), (24, 43321), (25, 43330), (26, 43336), (28, 43354), (29, 43375), (32, 43393), (33, 43396), (35, 43414),

Gene: Azira_64 Start: 44044, Stop: 44253, Start Num: 14

Candidate Starts for Azira_64:

(Start: 14 @44044 has 4 MA's), (Start: 20 @44089 has 4 MA's), (21, 44092), (22, 44101), (26, 44152), (27, 44161), (28, 44170), (31, 44203), (32, 44209), (33, 44212),

Gene: Biskit_69 Start: 44728, Stop: 44964, Start Num: 9

Candidate Starts for Biskit_69:

(Start: 9 @44728 has 3 MA's), (Start: 20 @44803 has 4 MA's), (22, 44812), (25, 44857), (26, 44863), (27, 44872), (28, 44881), (33, 44923), (34, 44941),

Gene: Blondies_72 Start: 45047, Stop: 45283, Start Num: 9

Candidate Starts for Blondies_72:

(Start: 9 @45047 has 3 MA's), (Start: 20 @45122 has 4 MA's), (22, 45131), (25, 45176), (26, 45182), (27, 45191), (28, 45200), (33, 45242), (34, 45260),

Gene: Burnsey_67 Start: 44874, Stop: 45083, Start Num: 20

Candidate Starts for Burnsey_67:

(Start: 9 @44811 has 3 MA's), (Start: 20 @44874 has 4 MA's), (22, 44883), (24, 44919), (25, 44928), (26, 44934), (28, 44952), (29, 44973), (33, 44994),

Gene: Button_68 Start: 45066, Stop: 45266, Start Num: 16

Candidate Starts for Button_68:

(12, 45045), (Start: 16 @45066 has 4 MA's), (23, 45117), (27, 45171), (28, 45180),

Gene: Dre3_64 Start: 44202, Stop: 44378, Start Num: 17

Candidate Starts for Dre3_64:

(Start: 17 @44202 has 2 MA's), (Start: 20 @44229 has 4 MA's), (22, 44241), (27, 44301), (28, 44310), (29, 44331), (32, 44349), (33, 44352),

Gene: Fribs8_64 Start: 44678, Stop: 44887, Start Num: 14

Candidate Starts for Fribs8_64:

(Start: 14 @44678 has 4 MA's), (Start: 20 @44723 has 4 MA's), (21, 44726), (22, 44735), (26, 44786), (27, 44795), (28, 44804), (31, 44837), (36, 44876),

Gene: GiKK_72 Start: 46277, Stop: 46456, Start Num: 16

Candidate Starts for GiKK_72:

(12, 46256), (Start: 16 @46277 has 4 MA's), (23, 46328), (27, 46382), (28, 46391),

Gene: Gibbous_64 Start: 44202, Stop: 44378, Start Num: 17

Candidate Starts for Gibbous_64:

(Start: 17 @44202 has 2 MA's), (Start: 20 @44229 has 4 MA's), (22, 44241), (27, 44301), (28, 44310), (29, 44331), (32, 44349), (33, 44352),

Gene: Hexbug_72 Start: 46284, Stop: 46460, Start Num: 18

Candidate Starts for Hexbug_72:

(2, 46077), (3, 46125), (4, 46134), (5, 46155), (10, 46227), (Start: 18 @46284 has 3 MA's), (28, 46374), (30, 46401), (33, 46416),

Gene: HippoPololi_64 Start: 43762, Stop: 43956, Start Num: 15

Candidate Starts for HippoPololi_64:

(Start: 15 @43762 has 1 MA's), (19, 43795), (Start: 20 @43801 has 4 MA's), (22, 43813), (25, 43858), (27, 43873), (28, 43882), (29, 43903), (30, 43909), (33, 43924),

Gene: Jamzy_72 Start: 46007, Stop: 46186, Start Num: 16

Candidate Starts for Jamzy_72:

(7, 45944), (8, 45965), (13, 45992), (Start: 16 @46007 has 4 MA's), (23, 46058), (27, 46112), (28, 46121),

Gene: MaVan_64 Start: 44074, Stop: 44283, Start Num: 14

Candidate Starts for MaVan_64:

(Start: 14 @44074 has 4 MA's), (Start: 20 @44119 has 4 MA's), (21, 44122), (22, 44131), (26, 44182), (27, 44191), (28, 44200), (31, 44233), (32, 44239), (33, 44242),

Gene: Margaret_73 Start: 45790, Stop: 46011, Start Num: 11

Candidate Starts for Margaret_73:

(Start: 11 @45790 has 2 MA's), (Start: 16 @45811 has 4 MA's), (Start: 18 @45835 has 3 MA's), (28, 45925), (30, 45952), (33, 45967),

Gene: Nodigi_72 Start: 46305, Stop: 46481, Start Num: 18

Candidate Starts for Nodigi_72:

(1, 46047), (2, 46098), (3, 46146), (4, 46155), (5, 46176), (10, 46248), (Start: 18 @46305 has 3 MA's), (28, 46395), (30, 46422), (33, 46437),

Gene: Orla_73 Start: 46436, Stop: 46612, Start Num: 18

Candidate Starts for Orla_73:

(2, 46229), (3, 46277), (4, 46286), (5, 46307), (6, 46340), (10, 46379), (Start: 18 @46436 has 3 MA's), (28, 46526), (30, 46553), (33, 46568),

Gene: Quasar_68 Start: 45648, Stop: 45857, Start Num: 20

Candidate Starts for Quasar_68:

(Start: 9 @45585 has 3 MA's), (Start: 20 @45648 has 4 MA's), (22, 45657), (24, 45693), (25, 45702), (26, 45708), (28, 45726), (29, 45747), (33, 45768),

Gene: RanchParmCat_72 Start: 46082, Stop: 46303, Start Num: 11

Candidate Starts for RanchParmCat_72:

(Start: 11 @46082 has 2 MA's), (Start: 16 @46103 has 4 MA's), (Start: 18 @46127 has 3 MA's), (28, 46217), (30, 46244), (33, 46259),

Gene: SketchMex_67 Start: 44728, Stop: 44964, Start Num: 9

Candidate Starts for SketchMex_67:

(Start: 9 @44728 has 3 MA's), (Start: 20 @44803 has 4 MA's), (22, 44812), (25, 44857), (26, 44863), (27, 44872), (28, 44881), (33, 44923), (34, 44941),

Gene: Survivors_66 Start: 44109, Stop: 44309, Start Num: 14

Candidate Starts for Survivors_66:

(Start: 14 @44109 has 4 MA's), (Start: 20 @44154 has 4 MA's), (21, 44157), (22, 44166), (26, 44217), (27, 44226), (28, 44235), (31, 44268), (32, 44274), (33, 44277),

Gene: Yakult_71 Start: 46173, Stop: 46373, Start Num: 16

Candidate Starts for Yakult_71:

(12, 46152), (Start: 16 @46173 has 4 MA's), (23, 46224), (27, 46278), (28, 46287),

Gene: Yarn_61 Start: 43281, Stop: 43460, Start Num: 20

Candidate Starts for Yarn_61:

(Start: 9 @43212 has 3 MA's), (Start: 20 @43281 has 4 MA's), (22, 43290), (24, 43326), (25, 43335), (26, 43341), (28, 43359), (29, 43380), (32, 43398), (33, 43401), (35, 43425),