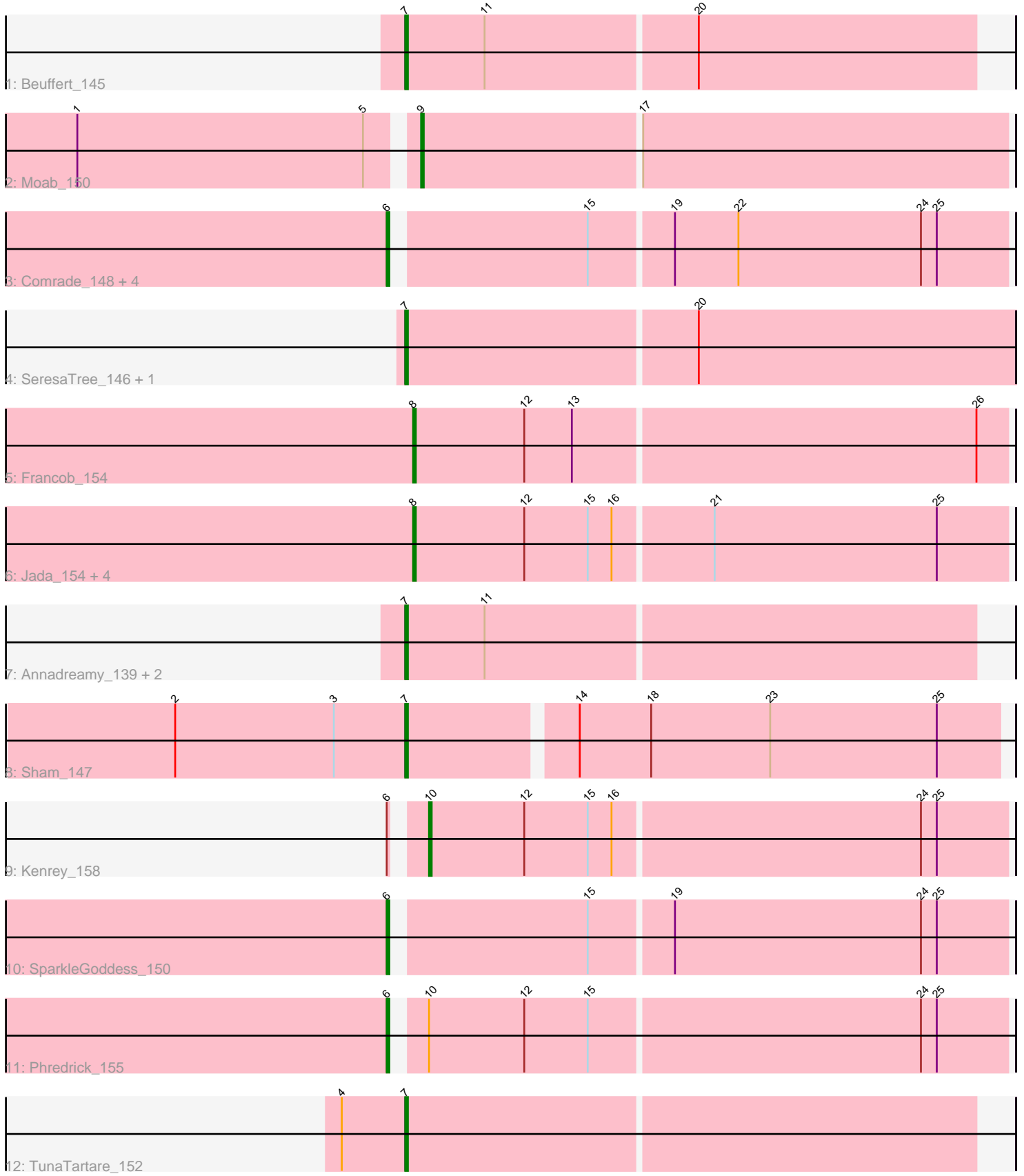


Pham 224871



Note: Tracks are now grouped by subcluster and scaled. Switching in subcluster is indicated by changes in track color. Track scale is now set by default to display the region 30 bp upstream of start 1 to 30 bp downstream of the last possible start. If this default region is judged to be packed too tightly with annotated starts, the track will be further scaled to only show that region of the ORF with annotated starts. This action will be indicated by adding "Zoomed" to the title. For starts, yellow indicates the location of called starts comprised solely of Glimmer/GeneMark auto-annotations, green indicates the location of called starts with at least 1 manual gene annotation.

Pham 224871 Report

This analysis was run 03/28/25 on database version 593.

Pham number 224871 has 23 members, 2 are drafts.

Phages represented in each track:

- Track 1 : Beuffert_145
- Track 2 : Moab_150
- Track 3 : Comrade_148, Karp_145, Belfort_151, Westy_152, Stigma_149
- Track 4 : SeresaTree_146, Faust_145
- Track 5 : Francob_154
- Track 6 : Jada_154, Forrest_157, Emma1919_156, Gilson_155, MeganTheeKilla_152
- Track 7 : Annadreamy_139, Blueeyedbeauty_148, Limpid_146
- Track 8 : Sham_147
- Track 9 : Kenrey_158
- Track 10 : SparkleGoddess_150
- Track 11 : Phredrick_155
- Track 12 : TunaTartare_152

Summary of Final Annotations (See graph section above for start numbers):

The start number called the most often in the published annotations is 7, it was called in 7 of the 21 non-draft genes in the pham.

Genes that call this "Most Annotated" start:

- Annadreamy_139, Beuffert_145, Blueeyedbeauty_148, Faust_145, Limpid_146, SeresaTree_146, Sham_147, TunaTartare_152,

Genes that have the "Most Annotated" start but do not call it:

-

Genes that do not have the "Most Annotated" start:

- Belfort_151, Comrade_148, Emma1919_156, Forrest_157, Francob_154, Gilson_155, Jada_154, Karp_145, Kenrey_158, MeganTheeKilla_152, Moab_150, Phredrick_155, SparkleGoddess_150, Stigma_149, Westy_152,

Summary by start number:

Start 6:

- Found in 8 of 23 (34.8%) of genes in pham
- Manual Annotations of this start: 6 of 21
- Called 87.5% of time when present
- Phage (with cluster) where this start called: Belfort_151 (BK1), Comrade_148 (BK1), Karp_145 (BK1), Phredrick_155 (BK1), SparkleGoddess_150 (BK1), Stigma_149 (BK1), Westy_152 (BK1),

Start 7:

- Found in 8 of 23 (34.8%) of genes in pham
- Manual Annotations of this start: 7 of 21
- Called 100.0% of time when present
- Phage (with cluster) where this start called: Annadreamy_139 (BK1), Beuffert_145 (BK1), Blueeyedbeauty_148 (BK1), Faust_145 (BK1), Limpid_146 (BK1), SeresaTree_146 (BK1), Sham_147 (BK1), TunaTartare_152 (BK1),

Start 8:

- Found in 6 of 23 (26.1%) of genes in pham
- Manual Annotations of this start: 6 of 21
- Called 100.0% of time when present
- Phage (with cluster) where this start called: Emma1919_156 (BK1), Forrest_157 (BK1), Francob_154 (BK1), Gilson_155 (BK1), Jada_154 (BK1), MeganTheeKilla_152 (BK1),

Start 9:

- Found in 1 of 23 (4.3%) of genes in pham
- Manual Annotations of this start: 1 of 21
- Called 100.0% of time when present
- Phage (with cluster) where this start called: Moab_150 (BK1),

Start 10:

- Found in 2 of 23 (8.7%) of genes in pham
- Manual Annotations of this start: 1 of 21
- Called 50.0% of time when present
- Phage (with cluster) where this start called: Kenrey_158 (BK1),

Summary by clusters:

There is one cluster represented in this pham: BK1

Info for manual annotations of cluster BK1:

- Start number 6 was manually annotated 6 times for cluster BK1.
- Start number 7 was manually annotated 7 times for cluster BK1.
- Start number 8 was manually annotated 6 times for cluster BK1.
- Start number 9 was manually annotated 1 time for cluster BK1.
- Start number 10 was manually annotated 1 time for cluster BK1.

Gene Information:

Gene: Annadreamy_139 Start: 79179, Stop: 79391, Start Num: 7

Candidate Starts for Annadreamy_139:

(Start: 7 @79179 has 7 MA's), (11, 79209),

Gene: Belfort_151 Start: 84987, Stop: 85211, Start Num: 6

Candidate Starts for Belfort_151:

(Start: 6 @84987 has 6 MA's), (15, 85056), (19, 85086), (22, 85110), (24, 85179), (25, 85185),

Gene: Beuffert_145 Start: 83733, Stop: 83945, Start Num: 7

Candidate Starts for Beuffert_145:

(Start: 7 @83733 has 7 MA's), (11, 83763), (20, 83841),

Gene: Blueeyedbeauty_148 Start: 83607, Stop: 83819, Start Num: 7

Candidate Starts for Blueeyedbeauty_148:

(Start: 7 @83607 has 7 MA's), (11, 83637),

Gene: Comrade_148 Start: 85186, Stop: 85410, Start Num: 6

Candidate Starts for Comrade_148:

(Start: 6 @85186 has 6 MA's), (15, 85255), (19, 85285), (22, 85309), (24, 85378), (25, 85384),

Gene: Emma1919_156 Start: 84605, Stop: 84826, Start Num: 8

Candidate Starts for Emma1919_156:

(Start: 8 @84605 has 6 MA's), (12, 84647), (15, 84671), (16, 84680), (21, 84716), (25, 84800),

Gene: Faust_145 Start: 84581, Stop: 84808, Start Num: 7

Candidate Starts for Faust_145:

(Start: 7 @84581 has 7 MA's), (20, 84689),

Gene: Forrest_157 Start: 85699, Stop: 85920, Start Num: 8

Candidate Starts for Forrest_157:

(Start: 8 @85699 has 6 MA's), (12, 85741), (15, 85765), (16, 85774), (21, 85810), (25, 85894),

Gene: Francob_154 Start: 85123, Stop: 85344, Start Num: 8

Candidate Starts for Francob_154:

(Start: 8 @85123 has 6 MA's), (12, 85165), (13, 85183), (26, 85333),

Gene: Gilson_155 Start: 84567, Stop: 84788, Start Num: 8

Candidate Starts for Gilson_155:

(Start: 8 @84567 has 6 MA's), (12, 84609), (15, 84633), (16, 84642), (21, 84678), (25, 84762),

Gene: Jada_154 Start: 84396, Stop: 84617, Start Num: 8

Candidate Starts for Jada_154:

(Start: 8 @84396 has 6 MA's), (12, 84438), (15, 84462), (16, 84471), (21, 84507), (25, 84591),

Gene: Karp_145 Start: 84414, Stop: 84638, Start Num: 6

Candidate Starts for Karp_145:

(Start: 6 @84414 has 6 MA's), (15, 84483), (19, 84513), (22, 84537), (24, 84606), (25, 84612),

Gene: Kenrey_158 Start: 85728, Stop: 85943, Start Num: 10

Candidate Starts for Kenrey_158:

(Start: 6 @85719 has 6 MA's), (Start: 10 @85728 has 1 MA's), (12, 85764), (15, 85788), (16, 85797), (24, 85911), (25, 85917),

Gene: Limpid_146 Start: 84480, Stop: 84692, Start Num: 7

Candidate Starts for Limpid_146:

(Start: 7 @84480 has 7 MA's), (11, 84510),

Gene: MeganTheeKilla_152 Start: 83918, Stop: 84139, Start Num: 8

Candidate Starts for MeganTheeKilla_152:

(Start: 8 @83918 has 6 MA's), (12, 83960), (15, 83984), (16, 83993), (21, 84029), (25, 84113),

Gene: Moab_150 Start: 86203, Stop: 86421, Start Num: 9

Candidate Starts for Moab_150:

(1, 86080), (5, 86188), (Start: 9 @86203 has 1 MA's), (17, 86284),

Gene: Phredrick_155 Start: 84063, Stop: 84287, Start Num: 6

Candidate Starts for Phredrick_155:

(Start: 6 @84063 has 6 MA's), (Start: 10 @84072 has 1 MA's), (12, 84108), (15, 84132), (24, 84255), (25, 84261),

Gene: SeresaTree_146 Start: 83963, Stop: 84190, Start Num: 7

Candidate Starts for SeresaTree_146:

(Start: 7 @83963 has 7 MA's), (20, 84071),

Gene: Sham_147 Start: 86459, Stop: 86677, Start Num: 7

Candidate Starts for Sham_147:

(2, 86372), (3, 86432), (Start: 7 @86459 has 7 MA's), (14, 86519), (18, 86546), (23, 86591), (25, 86654),

Gene: SparkleGoddess_150 Start: 85233, Stop: 85457, Start Num: 6

Candidate Starts for SparkleGoddess_150:

(Start: 6 @85233 has 6 MA's), (15, 85302), (19, 85332), (24, 85425), (25, 85431),

Gene: Stigma_149 Start: 85631, Stop: 85855, Start Num: 6

Candidate Starts for Stigma_149:

(Start: 6 @85631 has 6 MA's), (15, 85700), (19, 85730), (22, 85754), (24, 85823), (25, 85829),

Gene: TunaTartare_152 Start: 87717, Stop: 87929, Start Num: 7

Candidate Starts for TunaTartare_152:

(4, 87693), (Start: 7 @87717 has 7 MA's),

Gene: Westy_152 Start: 85946, Stop: 86170, Start Num: 6

Candidate Starts for Westy_152:

(Start: 6 @85946 has 6 MA's), (15, 86015), (19, 86045), (22, 86069), (24, 86138), (25, 86144),