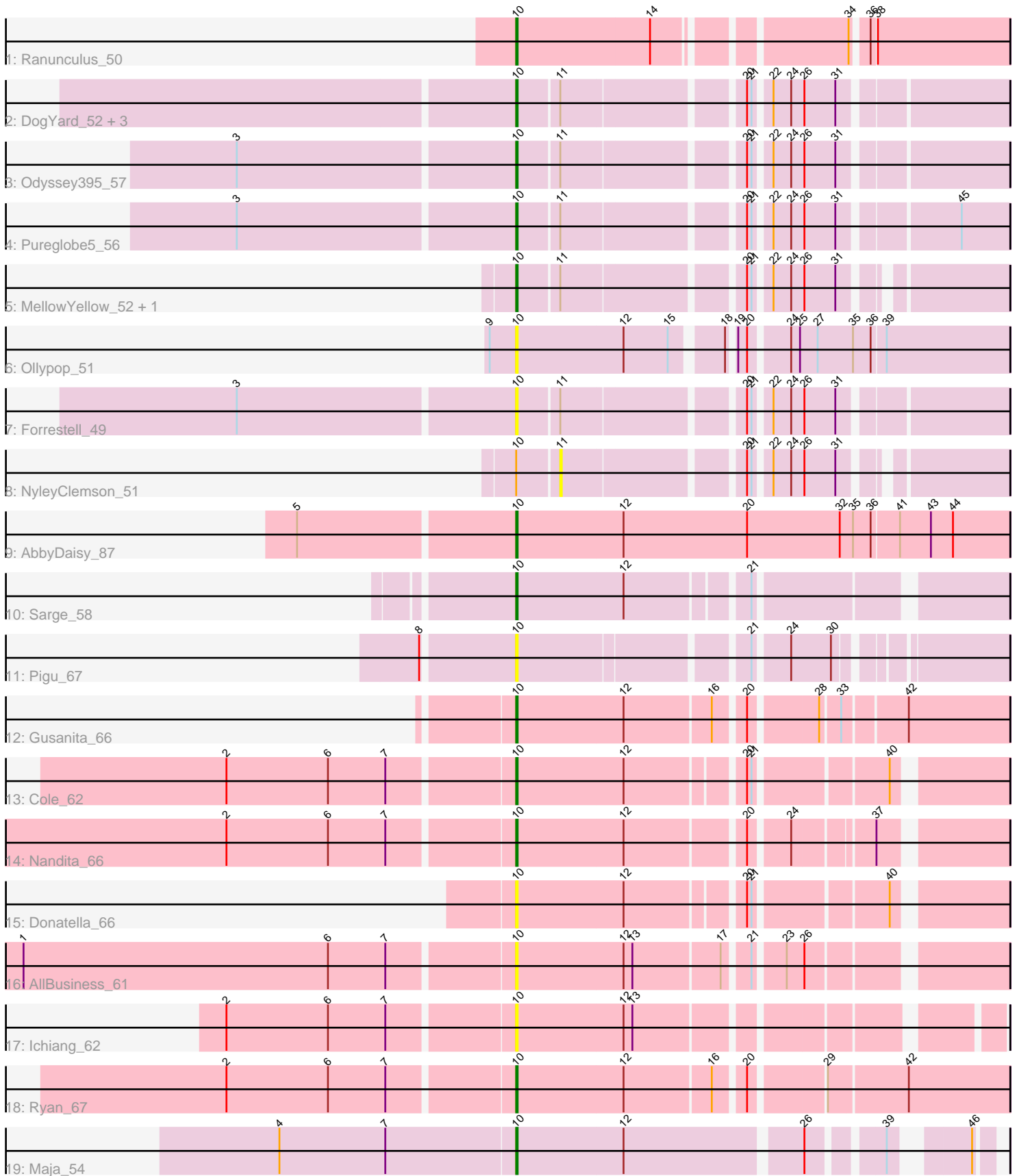


Pham 224875



Note: Tracks are now grouped by subcluster and scaled. Switching in subcluster is indicated by changes in track color. Track scale is now set by default to display the region 30 bp upstream of start 1 to 30 bp downstream of the last possible start. If this default region is judged to be packed too tightly with annotated starts, the track will be further scaled to only show that region of the ORF with annotated starts. This action will be indicated by adding "Zoomed" to the title. For starts, yellow indicates the location of called starts comprised solely of Glimmer/GeneMark auto-annotations, green indicates the location of called starts with at least 1 manual gene annotation.

Pham 224875 Report

This analysis was run 03/28/25 on database version 593.

Pham number 224875 has 23 members, 10 are drafts.

Phages represented in each track:

- Track 1 : Ranunculus_50
- Track 2 : DogYard_52, Pointis_53, Beagle_55, Kubulix_52
- Track 3 : Odyssey395_57
- Track 4 : Pureglobe5_56
- Track 5 : MellowYellow_52, RazzB_48
- Track 6 : Ollypop_51
- Track 7 : Forrestell_49
- Track 8 : NyleyClemson_51
- Track 9 : AbbyDaisy_87
- Track 10 : Sarge_58
- Track 11 : Pigu_67
- Track 12 : Gusanita_66
- Track 13 : Cole_62
- Track 14 : Nandita_66
- Track 15 : Donatella_66
- Track 16 : AllBusiness_61
- Track 17 : Ichiang_62
- Track 18 : Ryan_67
- Track 19 : Maja_54

Summary of Final Annotations (See graph section above for start numbers):

The start number called the most often in the published annotations is 10, it was called in 13 of the 13 non-draft genes in the pham.

Genes that call this "Most Annotated" start:

- AbbyDaisy_87, AllBusiness_61, Beagle_55, Cole_62, DogYard_52, Donatella_66, Forrestell_49, Gusanita_66, Ichiang_62, Kubulix_52, Maja_54, MellowYellow_52, Nandita_66, Odyssey395_57, Ollypop_51, Pigu_67, Pointis_53, Pureglobe5_56, Ranunculus_50, RazzB_48, Ryan_67, Sarge_58,

Genes that have the "Most Annotated" start but do not call it:

- NyleyClemson_51,

Genes that do not have the "Most Annotated" start:

-

Summary by start number:

Start 10:

- Found in 23 of 23 (100.0%) of genes in pham
- Manual Annotations of this start: 13 of 13
- Called 95.7% of time when present
- Phage (with cluster) where this start called: AbbyDaisy_87 (AY), AllBusiness_61 (FF), Beagle_55 (AP2), Cole_62 (FF), DogYard_52 (AP2), Donatella_66 (FF), Forrestell_49 (AP2), Gusanita_66 (FF), Ichiang_62 (FF), Kubulix_52 (AP2), Maja_54 (FO), MellowYellow_52 (AP2), Nandita_66 (FF), Odyssey395_57 (AP2), Ollypop_51 (AP2), Pigu_67 (FB), Pointis_53 (AP2), Pureglobe5_56 (AP2), Ranunculus_50 (AP), RazzB_48 (AP2), Ryan_67 (FF), Sarge_58 (FB),

Start 11:

- Found in 10 of 23 (43.5%) of genes in pham
- No Manual Annotations of this start.
- Called 10.0% of time when present
- Phage (with cluster) where this start called: NyleyClemson_51 (AP2),

Summary by clusters:

There are 6 clusters represented in this pham: AP2, AP, FB, FF, AY, FO,

Info for manual annotations of cluster AP:

- Start number 10 was manually annotated 1 time for cluster AP.

Info for manual annotations of cluster AP2:

- Start number 10 was manually annotated 5 times for cluster AP2.

Info for manual annotations of cluster AY:

- Start number 10 was manually annotated 1 time for cluster AY.

Info for manual annotations of cluster FB:

- Start number 10 was manually annotated 1 time for cluster FB.

Info for manual annotations of cluster FF:

- Start number 10 was manually annotated 4 times for cluster FF.

Info for manual annotations of cluster FO:

- Start number 10 was manually annotated 1 time for cluster FO.

Gene Information:

Gene: AbbyDaisy_87 Start: 50090, Stop: 50422, Start Num: 10

Candidate Starts for AbbyDaisy_87:

(5, 49949), (Start: 10 @50090 has 13 MA's), (12, 50162), (20, 50246), (32, 50309), (35, 50318), (36, 50330), (41, 50348), (43, 50369), (44, 50384),

Gene: AllBusiness_61 Start: 41766, Stop: 42065, Start Num: 10

Candidate Starts for AllBusiness_61:

(1, 41439), (6, 41646), (7, 41685), (Start: 10 @41766 has 13 MA's), (12, 41838), (13, 41844), (17, 41901), (21, 41916), (23, 41934), (26, 41946),

Gene: Beagle_55 Start: 39239, Stop: 38943, Start Num: 10

Candidate Starts for Beagle_55:

(Start: 10 @39239 has 13 MA's), (11, 39212), (20, 39101), (21, 39098), (22, 39089), (24, 39077), (26, 39068), (31, 39047),

Gene: Cole_62 Start: 40558, Stop: 40854, Start Num: 10

Candidate Starts for Cole_62:

(2, 40369), (6, 40438), (7, 40477), (Start: 10 @40558 has 13 MA's), (12, 40630), (20, 40702), (21, 40705), (40, 40786),

Gene: DogYard_52 Start: 39156, Stop: 38860, Start Num: 10

Candidate Starts for DogYard_52:

(Start: 10 @39156 has 13 MA's), (11, 39129), (20, 39018), (21, 39015), (22, 39006), (24, 38994), (26, 38985), (31, 38964),

Gene: Donatella_66 Start: 41180, Stop: 41476, Start Num: 10

Candidate Starts for Donatella_66:

(Start: 10 @41180 has 13 MA's), (12, 41252), (20, 41324), (21, 41327), (40, 41408),

Gene: Forrestell_49 Start: 37800, Stop: 37504, Start Num: 10

Candidate Starts for Forrestell_49:

(3, 37983), (Start: 10 @37800 has 13 MA's), (11, 37773), (20, 37662), (21, 37659), (22, 37650), (24, 37638), (26, 37629), (31, 37608),

Gene: Gusanita_66 Start: 41368, Stop: 41676, Start Num: 10

Candidate Starts for Gusanita_66:

(Start: 10 @41368 has 13 MA's), (12, 41440), (16, 41497), (20, 41515), (28, 41557), (33, 41569), (42, 41608),

Gene: Ichiang_62 Start: 40540, Stop: 40830, Start Num: 10

Candidate Starts for Ichiang_62:

(2, 40351), (6, 40420), (7, 40459), (Start: 10 @40540 has 13 MA's), (12, 40612), (13, 40618),

Gene: Kubulix_52 Start: 39104, Stop: 38808, Start Num: 10

Candidate Starts for Kubulix_52:

(Start: 10 @39104 has 13 MA's), (11, 39077), (20, 38966), (21, 38963), (22, 38954), (24, 38942), (26, 38933), (31, 38912),

Gene: Maja_54 Start: 35668, Stop: 35946, Start Num: 10

Candidate Starts for Maja_54:

(4, 35509), (7, 35581), (Start: 10 @35668 has 13 MA's), (12, 35740), (26, 35854), (39, 35896), (46, 35935),

Gene: MellowYellow_52 Start: 38261, Stop: 37974, Start Num: 10

Candidate Starts for MellowYellow_52:

(Start: 10 @38261 has 13 MA's), (11, 38234), (20, 38123), (21, 38120), (22, 38111), (24, 38099), (26, 38090), (31, 38069),

Gene: Nandita_66 Start: 41102, Stop: 41398, Start Num: 10

Candidate Starts for Nandita_66:

(2, 40913), (6, 40982), (7, 41021), (Start: 10 @41102 has 13 MA's), (12, 41174), (20, 41249), (24, 41273), (37, 41321),

Gene: NyleyClemson_51 Start: 37849, Stop: 37589, Start Num: 11

Candidate Starts for NyleyClemson_51:

(Start: 10 @37876 has 13 MA's), (11, 37849), (20, 37738), (21, 37735), (22, 37726), (24, 37714), (26, 37705), (31, 37684),

Gene: Odyssey395_57 Start: 39463, Stop: 39167, Start Num: 10

Candidate Starts for Odyssey395_57:

(3, 39646), (Start: 10 @39463 has 13 MA's), (11, 39436), (20, 39325), (21, 39322), (22, 39313), (24, 39301), (26, 39292), (31, 39271),

Gene: Ollypop_51 Start: 40130, Stop: 39819, Start Num: 10

Candidate Starts for Ollypop_51:

(9, 40148), (Start: 10 @40130 has 13 MA's), (12, 40058), (15, 40028), (18, 39998), (19, 39995), (20, 39989), (24, 39965), (25, 39959), (27, 39947), (35, 39923), (36, 39911), (39, 39902),

Gene: Pigu_67 Start: 35049, Stop: 35342, Start Num: 10

Candidate Starts for Pigu_67:

(8, 34989), (Start: 10 @35049 has 13 MA's), (21, 35193), (24, 35214), (30, 35241),

Gene: Pointis_53 Start: 39279, Stop: 38983, Start Num: 10

Candidate Starts for Pointis_53:

(Start: 10 @39279 has 13 MA's), (11, 39252), (20, 39141), (21, 39138), (22, 39129), (24, 39117), (26, 39108), (31, 39087),

Gene: Pureglobe5_56 Start: 39710, Stop: 39414, Start Num: 10

Candidate Starts for Pureglobe5_56:

(3, 39893), (Start: 10 @39710 has 13 MA's), (11, 39683), (20, 39572), (21, 39569), (22, 39560), (24, 39548), (26, 39539), (31, 39518), (45, 39446),

Gene: Ranunculus_50 Start: 42260, Stop: 41955, Start Num: 10

Candidate Starts for Ranunculus_50:

(Start: 10 @42260 has 13 MA's), (14, 42170), (34, 42056), (36, 42047), (38, 42044),

Gene: RazzB_48 Start: 38007, Stop: 37720, Start Num: 10

Candidate Starts for RazzB_48:

(Start: 10 @38007 has 13 MA's), (11, 37980), (20, 37869), (21, 37866), (22, 37857), (24, 37845), (26, 37836), (31, 37815),

Gene: Ryan_67 Start: 41658, Stop: 41969, Start Num: 10

Candidate Starts for Ryan_67:

(2, 41469), (6, 41538), (7, 41577), (Start: 10 @41658 has 13 MA's), (12, 41730), (16, 41787), (20, 41805), (29, 41850), (42, 41901),

Gene: Sarge_58 Start: 32985, Stop: 33284, Start Num: 10

Candidate Starts for Sarge_58:

(Start: 10 @32985 has 13 MA's), (12, 33057), (21, 33132),