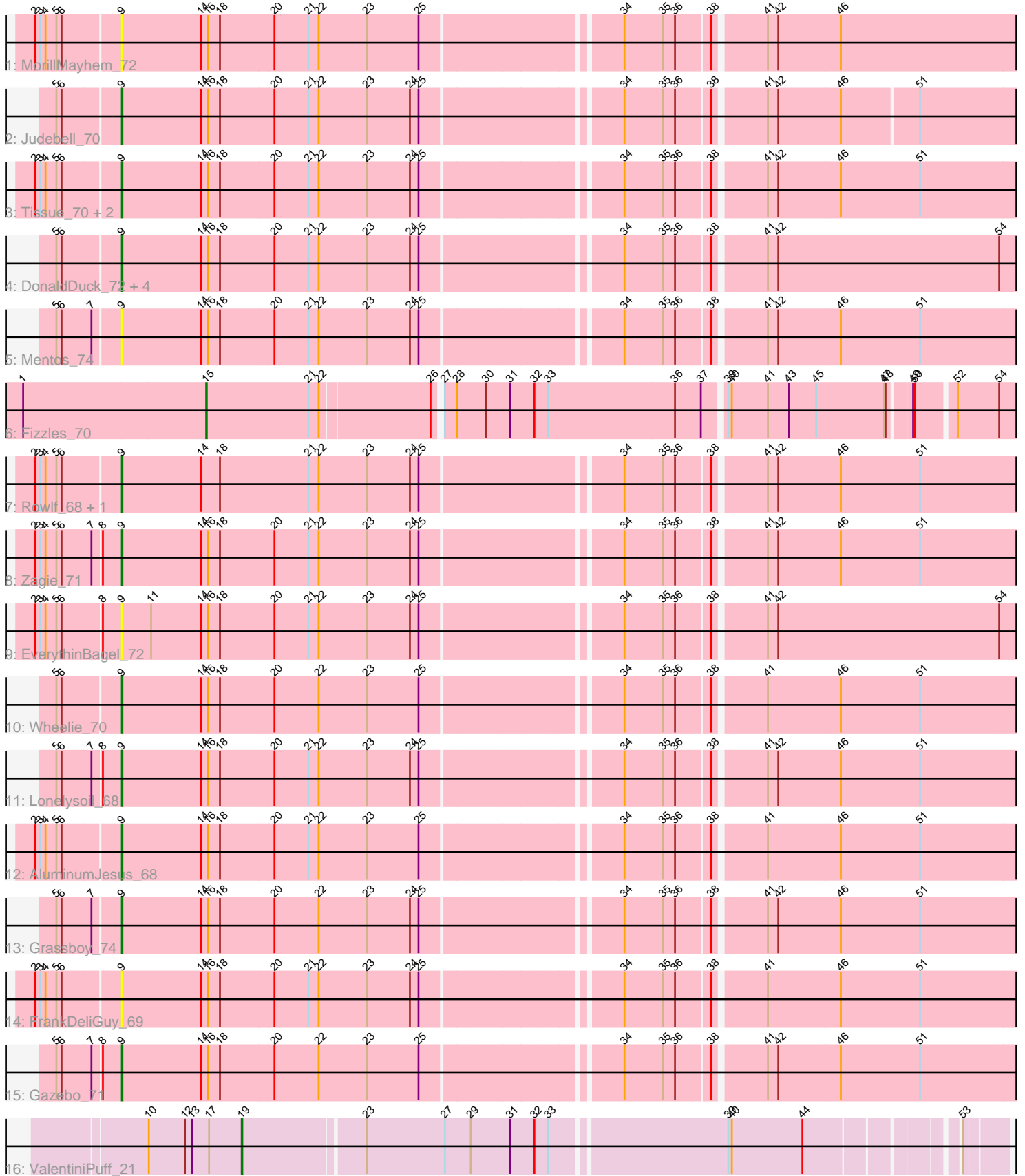


Pham 224878



Note: Tracks are now grouped by subcluster and scaled. Switching in subcluster is indicated by changes in track color. Track scale is now set by default to display the region 30 bp upstream of start 1 to 30 bp downstream of the last possible start. If this default region is judged to be packed too tightly with annotated starts, the track will be further scaled to only show that region of the ORF with annotated starts. This action will be indicated by adding "Zoomed" to the title. For starts, yellow indicates the location of called starts comprised solely of Glimmer/GeneMark auto-annotations, green indicates the location of called starts with at least 1 manual gene annotation.

Pham 224878 Report

This analysis was run 03/28/25 on database version 593.

Pham number 224878 has 23 members, 11 are drafts.

Phages represented in each track:

- Track 1 : MorillMayhem_72
- Track 2 : Judebell_70
- Track 3 : Tissue_70, SallyK_73, Kyva_73
- Track 4 : DonaldDuck_72, Viceroy_69, Zhafia_75, Sillytadpoles_73, Llemily_72
- Track 5 : Mentos_74
- Track 6 : Fizzles_70
- Track 7 : Rowlf_68, Statler_76
- Track 8 : Zagie_71
- Track 9 : EverythinBagel_72
- Track 10 : Wheelie_70
- Track 11 : Lonelysoil_68
- Track 12 : AluminumJesus_68
- Track 13 : Grassboy_74
- Track 14 : FrankDeliGuy_69
- Track 15 : Gazebo_71
- Track 16 : ValentiniPuff_21

Summary of Final Annotations (See graph section above for start numbers):

The start number called the most often in the published annotations is 9, it was called in 10 of the 12 non-draft genes in the pham.

Genes that call this "Most Annotated" start:

- AluminumJesus_68, DonaldDuck_72, EverythinBagel_72, FrankDeliGuy_69, Gazebo_71, Grassboy_74, Judebell_70, Kyva_73, Llemily_72, Lonelysoil_68, Mentos_74, MorillMayhem_72, Rowlf_68, SallyK_73, Sillytadpoles_73, Statler_76, Tissue_70, Viceroy_69, Wheelie_70, Zagie_71, Zhafia_75,

Genes that have the "Most Annotated" start but do not call it:

-

Genes that do not have the "Most Annotated" start:

- Fizzles_70, ValentiniPuff_21,

Summary by start number:

Start 9:

- Found in 21 of 23 (91.3%) of genes in pham
- Manual Annotations of this start: 10 of 12
- Called 100.0% of time when present
- Phage (with cluster) where this start called: AluminumJesus_68 (EG), DonaldDuck_72 (EG), EverythinBagel_72 (EG), FrankDeliGuy_69 (EG), Gazebo_71 (EG), Grassboy_74 (EG), Judebell_70 (EG), Kyva_73 (EG), Llemily_72 (EG), Lonelysoil_68 (EG), Mentos_74 (EG), MorillMayhem_72 (EG), Rowlf_68 (EG), SallyK_73 (EG), Sillytadpoles_73 (EG), Statler_76 (EG), Tissue_70 (EG), Viceroy_69 (EG), Wheelie_70 (EG), Zagie_71 (EG), Zhafia_75 (EG),

Start 15:

- Found in 1 of 23 (4.3%) of genes in pham
- Manual Annotations of this start: 1 of 12
- Called 100.0% of time when present
- Phage (with cluster) where this start called: Fizzles_70 (EG),

Start 19:

- Found in 1 of 23 (4.3%) of genes in pham
- Manual Annotations of this start: 1 of 12
- Called 100.0% of time when present
- Phage (with cluster) where this start called: ValentiniPuff_21 (singleton),

Summary by clusters:

There are 2 clusters represented in this pham: EG, singleton,

Info for manual annotations of cluster EG:

- Start number 9 was manually annotated 10 times for cluster EG.
- Start number 15 was manually annotated 1 time for cluster EG.

Gene Information:

Gene: AluminumJesus_68 Start: 49210, Stop: 47717, Start Num: 9

Candidate Starts for AluminumJesus_68:

(2, 49351), (3, 49342), (4, 49333), (5, 49315), (6, 49306), (Start: 9 @49210 has 10 MA's), (14, 49072), (16, 49060), (18, 49039), (20, 48946), (21, 48889), (22, 48871), (23, 48787), (25, 48703), (34, 48388), (35, 48325), (36, 48307), (38, 48250), (41, 48166), (46, 48040), (51, 47902),

Gene: DonaldDuck_72 Start: 49347, Stop: 47854, Start Num: 9

Candidate Starts for DonaldDuck_72:

(5, 49452), (6, 49443), (Start: 9 @49347 has 10 MA's), (14, 49209), (16, 49197), (18, 49176), (20, 49083), (21, 49026), (22, 49008), (23, 48924), (24, 48849), (25, 48840), (34, 48525), (35, 48462), (36, 48444), (38, 48387), (41, 48303), (42, 48285), (54, 47901),

Gene: EverythinBagel_72 Start: 49828, Stop: 48335, Start Num: 9

Candidate Starts for EverythinBagel_72:

(2, 49972), (3, 49963), (4, 49954), (5, 49936), (6, 49927), (8, 49861), (Start: 9 @49828 has 10 MA's), (11, 49777), (14, 49690), (16, 49678), (18, 49657), (20, 49564), (21, 49507), (22, 49489), (23, 49405),

(24, 49330), (25, 49321), (34, 49006), (35, 48943), (36, 48925), (38, 48868), (41, 48784), (42, 48766), (54, 48382),

Gene: Fizzles_70 Start: 49488, Stop: 48133, Start Num: 15

Candidate Starts for Fizzles_70:

(1, 49803), (Start: 15 @49488 has 1 MA's), (21, 49314), (22, 49296), (26, 49110), (27, 49101), (28, 49080), (30, 49029), (31, 48987), (32, 48945), (33, 48921), (36, 48702), (37, 48657), (39, 48624), (40, 48618), (41, 48555), (43, 48519), (45, 48471), (47, 48354), (48, 48351), (49, 48315), (50, 48312), (52, 48249), (54, 48180),

Gene: FrankDeliGuy_69 Start: 49442, Stop: 47949, Start Num: 9

Candidate Starts for FrankDeliGuy_69:

(2, 49583), (3, 49574), (4, 49565), (5, 49547), (6, 49538), (Start: 9 @49442 has 10 MA's), (14, 49304), (16, 49292), (18, 49271), (20, 49178), (21, 49121), (22, 49103), (23, 49019), (24, 48944), (25, 48935), (34, 48620), (35, 48557), (36, 48539), (38, 48482), (41, 48398), (46, 48272), (51, 48134),

Gene: Gazebo_71 Start: 50158, Stop: 48665, Start Num: 9

Candidate Starts for Gazebo_71:

(5, 50266), (6, 50257), (7, 50206), (8, 50191), (Start: 9 @50158 has 10 MA's), (14, 50020), (16, 50008), (18, 49987), (20, 49894), (22, 49819), (23, 49735), (25, 49651), (34, 49336), (35, 49273), (36, 49255), (38, 49198), (41, 49114), (42, 49096), (46, 48988), (51, 48850),

Gene: Grassboy_74 Start: 50127, Stop: 48634, Start Num: 9

Candidate Starts for Grassboy_74:

(5, 50232), (6, 50223), (7, 50172), (Start: 9 @50127 has 10 MA's), (14, 49989), (16, 49977), (18, 49956), (20, 49863), (22, 49788), (23, 49704), (24, 49629), (25, 49620), (34, 49305), (35, 49242), (36, 49224), (38, 49167), (41, 49083), (42, 49065), (46, 48957), (51, 48819),

Gene: Judebell_70 Start: 49490, Stop: 48006, Start Num: 9

Candidate Starts for Judebell_70:

(5, 49595), (6, 49586), (Start: 9 @49490 has 10 MA's), (14, 49352), (16, 49340), (18, 49319), (20, 49226), (21, 49169), (22, 49151), (23, 49067), (24, 48992), (25, 48983), (34, 48668), (35, 48605), (36, 48587), (38, 48530), (41, 48446), (42, 48428), (46, 48320), (51, 48191),

Gene: Kyva_73 Start: 50150, Stop: 48657, Start Num: 9

Candidate Starts for Kyva_73:

(2, 50291), (3, 50282), (4, 50273), (5, 50255), (6, 50246), (Start: 9 @50150 has 10 MA's), (14, 50012), (16, 50000), (18, 49979), (20, 49886), (21, 49829), (22, 49811), (23, 49727), (24, 49652), (25, 49643), (34, 49328), (35, 49265), (36, 49247), (38, 49190), (41, 49106), (42, 49088), (46, 48980), (51, 48842),

Gene: Llemily_72 Start: 49042, Stop: 47549, Start Num: 9

Candidate Starts for Llemily_72:

(5, 49147), (6, 49138), (Start: 9 @49042 has 10 MA's), (14, 48904), (16, 48892), (18, 48871), (20, 48778), (21, 48721), (22, 48703), (23, 48619), (24, 48544), (25, 48535), (34, 48220), (35, 48157), (36, 48139), (38, 48082), (41, 47998), (42, 47980), (54, 47596),

Gene: Lonelysoil_68 Start: 48799, Stop: 47306, Start Num: 9

Candidate Starts for Lonelysoil_68:

(5, 48907), (6, 48898), (7, 48847), (8, 48832), (Start: 9 @48799 has 10 MA's), (14, 48661), (16, 48649), (18, 48628), (20, 48535), (21, 48478), (22, 48460), (23, 48376), (24, 48301), (25, 48292), (34, 47977), (35, 47914), (36, 47896), (38, 47839), (41, 47755), (42, 47737), (46, 47629), (51, 47491),

Gene: Mentos_74 Start: 50714, Stop: 49221, Start Num: 9

Candidate Starts for Mentos_74:

(5, 50819), (6, 50810), (7, 50759), (Start: 9 @50714 has 10 MA's), (14, 50576), (16, 50564), (18, 50543), (20, 50450), (21, 50393), (22, 50375), (23, 50291), (24, 50216), (25, 50207), (34, 49892), (35, 49829), (36, 49811), (38, 49754), (41, 49670), (42, 49652), (46, 49544), (51, 49406),

Gene: MorillMayhem_72 Start: 50260, Stop: 48767, Start Num: 9

Candidate Starts for MorillMayhem_72:

(2, 50401), (3, 50392), (4, 50383), (5, 50365), (6, 50356), (Start: 9 @50260 has 10 MA's), (14, 50122), (16, 50110), (18, 50089), (20, 49996), (21, 49939), (22, 49921), (23, 49837), (25, 49753), (34, 49438), (35, 49375), (36, 49357), (38, 49300), (41, 49216), (42, 49198), (46, 49090),

Gene: Rowlf_68 Start: 49363, Stop: 47870, Start Num: 9

Candidate Starts for Rowlf_68:

(2, 49504), (3, 49495), (4, 49486), (5, 49468), (6, 49459), (Start: 9 @49363 has 10 MA's), (14, 49225), (18, 49192), (21, 49042), (22, 49024), (23, 48940), (24, 48865), (25, 48856), (34, 48541), (35, 48478), (36, 48460), (38, 48403), (41, 48319), (42, 48301), (46, 48193), (51, 48055),

Gene: SallyK_73 Start: 50894, Stop: 49401, Start Num: 9

Candidate Starts for SallyK_73:

(2, 51035), (3, 51026), (4, 51017), (5, 50999), (6, 50990), (Start: 9 @50894 has 10 MA's), (14, 50756), (16, 50744), (18, 50723), (20, 50630), (21, 50573), (22, 50555), (23, 50471), (24, 50396), (25, 50387), (34, 50072), (35, 50009), (36, 49991), (38, 49934), (41, 49850), (42, 49832), (46, 49724), (51, 49586),

Gene: Sillytadpoles_73 Start: 49030, Stop: 47537, Start Num: 9

Candidate Starts for Sillytadpoles_73:

(5, 49135), (6, 49126), (Start: 9 @49030 has 10 MA's), (14, 48892), (16, 48880), (18, 48859), (20, 48766), (21, 48709), (22, 48691), (23, 48607), (24, 48532), (25, 48523), (34, 48208), (35, 48145), (36, 48127), (38, 48070), (41, 47986), (42, 47968), (54, 47584),

Gene: Statler_76 Start: 50079, Stop: 48586, Start Num: 9

Candidate Starts for Statler_76:

(2, 50220), (3, 50211), (4, 50202), (5, 50184), (6, 50175), (Start: 9 @50079 has 10 MA's), (14, 49941), (18, 49908), (21, 49758), (22, 49740), (23, 49656), (24, 49581), (25, 49572), (34, 49257), (35, 49194), (36, 49176), (38, 49119), (41, 49035), (42, 49017), (46, 48909), (51, 48771),

Gene: Tissue_70 Start: 49757, Stop: 48264, Start Num: 9

Candidate Starts for Tissue_70:

(2, 49898), (3, 49889), (4, 49880), (5, 49862), (6, 49853), (Start: 9 @49757 has 10 MA's), (14, 49619), (16, 49607), (18, 49586), (20, 49493), (21, 49436), (22, 49418), (23, 49334), (24, 49259), (25, 49250), (34, 48935), (35, 48872), (36, 48854), (38, 48797), (41, 48713), (42, 48695), (46, 48587), (51, 48449),

Gene: ValentiniPuff_21 Start: 13459, Stop: 14676, Start Num: 19

Candidate Starts for ValentiniPuff_21:

(10, 13306), (12, 13366), (13, 13378), (17, 13405), (Start: 19 @13459 has 1 MA's), (23, 13651), (27, 13786), (29, 13831), (31, 13900), (32, 13942), (33, 13966), (39, 14254), (40, 14260), (44, 14383), (53, 14608),

Gene: Viceroy_69 Start: 49163, Stop: 47670, Start Num: 9

Candidate Starts for Viceroy_69:

(5, 49268), (6, 49259), (Start: 9 @49163 has 10 MA's), (14, 49025), (16, 49013), (18, 48992), (20, 48899), (21, 48842), (22, 48824), (23, 48740), (24, 48665), (25, 48656), (34, 48341), (35, 48278), (36, 48260), (38, 48203), (41, 48119), (42, 48101), (54, 47717),

Gene: Wheelie_70 Start: 49347, Stop: 47854, Start Num: 9

Candidate Starts for Wheelie_70:

(5, 49452), (6, 49443), (Start: 9 @49347 has 10 MA's), (14, 49209), (16, 49197), (18, 49176), (20, 49083), (22, 49008), (23, 48924), (25, 48840), (34, 48525), (35, 48462), (36, 48444), (38, 48387), (41, 48303), (46, 48177), (51, 48039),

Gene: Zagie_71 Start: 49571, Stop: 48078, Start Num: 9

Candidate Starts for Zagie_71:

(2, 49715), (3, 49706), (4, 49697), (5, 49679), (6, 49670), (7, 49619), (8, 49604), (Start: 9 @49571 has 10 MA's), (14, 49433), (16, 49421), (18, 49400), (20, 49307), (21, 49250), (22, 49232), (23, 49148), (24, 49073), (25, 49064), (34, 48749), (35, 48686), (36, 48668), (38, 48611), (41, 48527), (42, 48509), (46, 48401), (51, 48263),

Gene: Zhafia_75 Start: 49827, Stop: 48334, Start Num: 9

Candidate Starts for Zhafia_75:

(5, 49932), (6, 49923), (Start: 9 @49827 has 10 MA's), (14, 49689), (16, 49677), (18, 49656), (20, 49563), (21, 49506), (22, 49488), (23, 49404), (24, 49329), (25, 49320), (34, 49005), (35, 48942), (36, 48924), (38, 48867), (41, 48783), (42, 48765), (54, 48381),