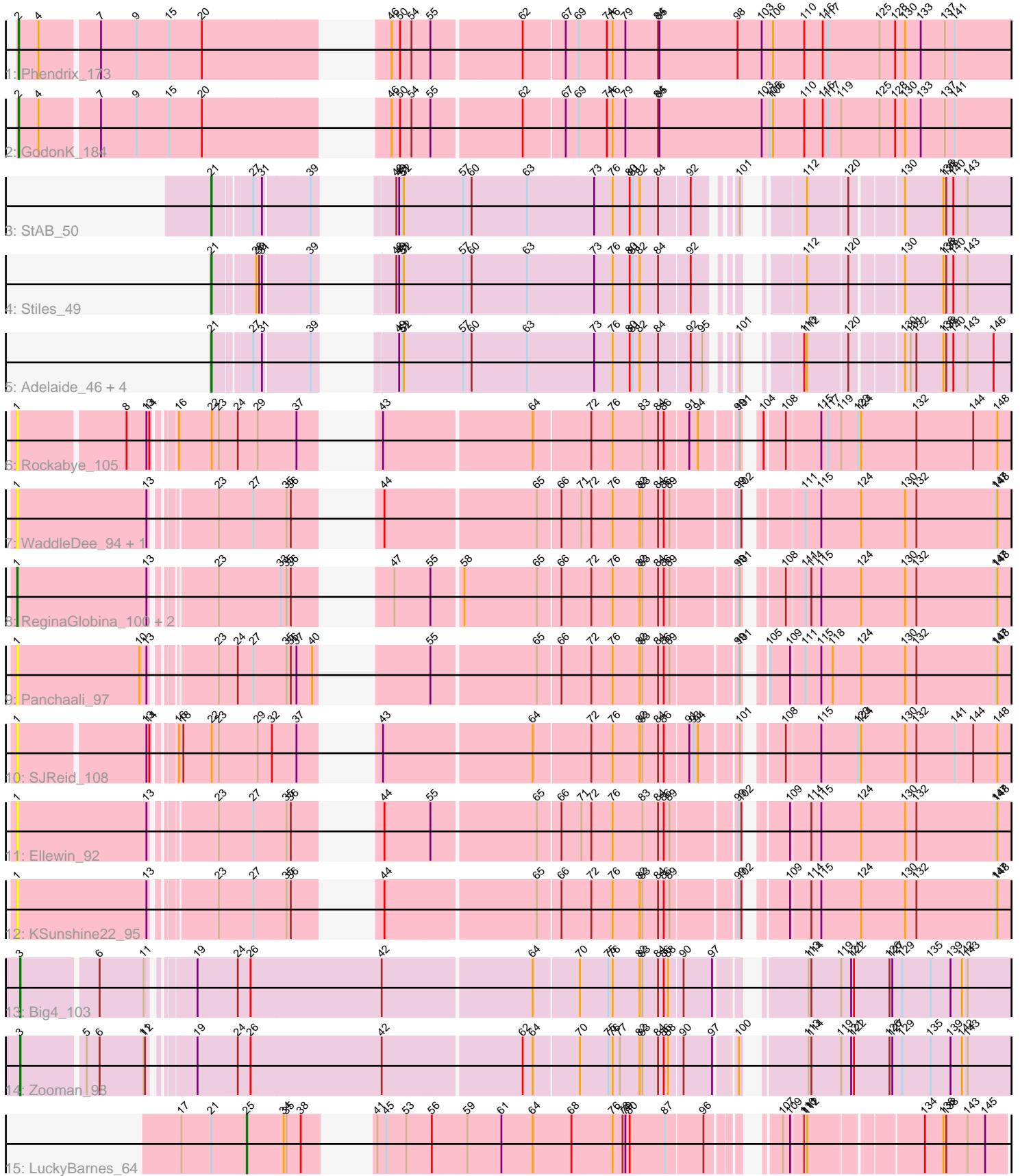


Pham 224881



Note: Tracks are now grouped by subcluster and scaled. Switching in subcluster is indicated by changes in track color. Track scale is now set by default to display the region 30 bp upstream of start 1 to 30 bp downstream of the last possible start. If this default region is judged to be packed too tightly with annotated starts, the track will be further scaled to only show that region of the ORF with annotated starts. This action will be indicated by adding "Zoomed" to the title. For starts, yellow indicates the location of called starts comprised solely of Glimmer/GeneMark auto-annotations, green indicates the location of called starts with at least 1 manual gene annotation.

Pham 224881 Report

This analysis was run 03/28/25 on database version 593.

Pham number 224881 has 22 members, 9 are drafts.

Phages represented in each track:

- Track 1 : Phendrix_173
- Track 2 : GodonK_184
- Track 3 : StAB_50
- Track 4 : Stiles_49
- Track 5 : Adelaide_46, Dina_47, Lederberg_45, SamW_45, Troy_45
- Track 6 : Rockabye_105
- Track 7 : WaddleDee_94, DunneganBoMo_94
- Track 8 : ReginaGlobina_100, LeoJr_100, Atuin_95
- Track 9 : Panchaali_97
- Track 10 : SJReid_108
- Track 11 : Ellewin_92
- Track 12 : KSunshine22_95
- Track 13 : Big4_103
- Track 14 : Zooman_98
- Track 15 : LuckyBarnes_64

Summary of Final Annotations (See graph section above for start numbers):

The start number called the most often in the published annotations is 21, it was called in 7 of the 13 non-draft genes in the pham.

Genes that call this "Most Annotated" start:

- Adelaide_46, Dina_47, Lederberg_45, SamW_45, StAB_50, Stiles_49, Troy_45,

Genes that have the "Most Annotated" start but do not call it:

- LuckyBarnes_64,

Genes that do not have the "Most Annotated" start:

- Atuin_95, Big4_103, DunneganBoMo_94, Ellewin_92, GodonK_184, KSunshine22_95, LeoJr_100, Panchaali_97, Phendrix_173, ReginaGlobina_100, Rockabye_105, SJReid_108, WaddleDee_94, Zooman_98,

Summary by start number:

Start 1:

- Found in 10 of 22 (45.5%) of genes in pham
- Manual Annotations of this start: 1 of 13
- Called 100.0% of time when present
- Phage (with cluster) where this start called: Atuin_95 (FC), DunneganBoMo_94 (FC), Ellewin_92 (FC), KSunshine22_95 (FC), LeoJr_100 (FC), Panchaali_97 (FC), ReginaGlobina_100 (FC), Rockabye_105 (FC), SJReid_108 (FC), WaddleDee_94 (FC),

Start 2:

- Found in 2 of 22 (9.1%) of genes in pham
- Manual Annotations of this start: 2 of 13
- Called 100.0% of time when present
- Phage (with cluster) where this start called: GodonK_184 (DK), Phendrix_173 (DK),

Start 3:

- Found in 2 of 22 (9.1%) of genes in pham
- Manual Annotations of this start: 2 of 13
- Called 100.0% of time when present
- Phage (with cluster) where this start called: Big4_103 (GD2), Zooman_98 (GD2),

Start 21:

- Found in 8 of 22 (36.4%) of genes in pham
- Manual Annotations of this start: 7 of 13
- Called 87.5% of time when present
- Phage (with cluster) where this start called: Adelaide_46 (EP), Dina_47 (EP), Lederberg_45 (EP), SamW_45 (EP), StAB_50 (EP), Stiles_49 (EP), Troy_45 (EP),

Start 25:

- Found in 1 of 22 (4.5%) of genes in pham
- Manual Annotations of this start: 1 of 13
- Called 100.0% of time when present
- Phage (with cluster) where this start called: LuckyBarnes_64 (singleton),

Summary by clusters:

There are 5 clusters represented in this pham: GD2, singleton, FC, EP, DK,

Info for manual annotations of cluster DK:

- Start number 2 was manually annotated 2 times for cluster DK.

Info for manual annotations of cluster EP:

- Start number 21 was manually annotated 7 times for cluster EP.

Info for manual annotations of cluster FC:

- Start number 1 was manually annotated 1 time for cluster FC.

Info for manual annotations of cluster GD2:

- Start number 3 was manually annotated 2 times for cluster GD2.

Gene Information:

Gene: Adelaide_46 Start: 37262, Stop: 38638, Start Num: 21

Candidate Starts for Adelaide_46:

(Start: 21 @37262 has 7 MA's), (27, 37331), (31, 37349), (39, 37442), (49, 37502), (51, 37508), (52, 37511), (57, 37631), (60, 37649), (63, 37766), (73, 37904), (76, 37943), (80, 37976), (81, 37982), (82, 37997), (84, 38036), (92, 38096), (95, 38120), (101, 38156), (110, 38225), (112, 38231), (120, 38312), (130, 38408), (131, 38420), (132, 38432), (136, 38489), (138, 38495), (140, 38507), (143, 38537), (146, 38588),

Gene: Atuin_95 Start: 80621, Stop: 82477, Start Num: 1

Candidate Starts for Atuin_95:

(Start: 1 @80621 has 1 MA's), (13, 80894), (23, 80999), (33, 81122), (35, 81134), (36, 81143), (47, 81239), (55, 81314), (58, 81374), (65, 81527), (66, 81572), (72, 81632), (76, 81677), (82, 81734), (83, 81740), (84, 81773), (86, 81785), (89, 81797), (99, 81914), (101, 81917), (108, 81974), (111, 82010), (114, 82022), (115, 82043), (124, 82127), (130, 82220), (132, 82244), (147, 82412), (148, 82415),

Gene: Big4_103 Start: 78367, Stop: 76427, Start Num: 3

Candidate Starts for Big4_103:

(Start: 3 @78367 has 2 MA's), (6, 78214), (11, 78121), (19, 78046), (24, 77965), (26, 77941), (42, 77665), (64, 77359), (70, 77269), (75, 77209), (76, 77200), (82, 77143), (83, 77137), (84, 77104), (86, 77092), (88, 77083), (90, 77059), (97, 76999), (113, 76867), (114, 76861), (119, 76798), (121, 76777), (122, 76771), (126, 76696), (127, 76690), (129, 76669), (135, 76609), (139, 76567), (142, 76543), (143, 76531),

Gene: Dina_47 Start: 36338, Stop: 37714, Start Num: 21

Candidate Starts for Dina_47:

(Start: 21 @36338 has 7 MA's), (27, 36407), (31, 36425), (39, 36518), (49, 36578), (51, 36584), (52, 36587), (57, 36707), (60, 36725), (63, 36842), (73, 36980), (76, 37019), (80, 37052), (81, 37058), (82, 37073), (84, 37112), (92, 37172), (95, 37196), (101, 37232), (110, 37301), (112, 37307), (120, 37388), (130, 37484), (131, 37496), (132, 37508), (136, 37565), (138, 37571), (140, 37583), (143, 37613), (146, 37664),

Gene: DunneganBoMo_94 Start: 76558, Stop: 78402, Start Num: 1

Candidate Starts for DunneganBoMo_94:

(Start: 1 @76558 has 1 MA's), (13, 76831), (23, 76939), (27, 77005), (35, 77074), (36, 77083), (44, 77158), (65, 77467), (66, 77512), (71, 77551), (72, 77572), (76, 77617), (82, 77674), (83, 77680), (84, 77713), (86, 77725), (89, 77737), (99, 77854), (102, 77860), (111, 77950), (115, 77983), (124, 78067), (130, 78160), (132, 78184), (147, 78352), (148, 78355),

Gene: Ellewin_92 Start: 75969, Stop: 77813, Start Num: 1

Candidate Starts for Ellewin_92:

(Start: 1 @75969 has 1 MA's), (13, 76242), (23, 76350), (27, 76416), (35, 76485), (36, 76494), (44, 76569), (55, 76665), (65, 76878), (66, 76923), (71, 76962), (72, 76983), (76, 77028), (83, 77091), (84, 77124), (86, 77136), (89, 77148), (99, 77265), (102, 77271), (109, 77334), (114, 77373), (115, 77394), (124, 77478), (130, 77571), (132, 77595), (147, 77763), (148, 77766),

Gene: GodonK_184 Start: 93693, Stop: 91774, Start Num: 2

Candidate Starts for GodonK_184:

(Start: 2 @93693 has 2 MA's), (4, 93651), (7, 93537), (9, 93462), (15, 93393), (20, 93324), (46, 93051), (50, 93033), (54, 93009), (55, 92970), (62, 92790), (67, 92706), (69, 92682), (74, 92622), (76, 92610), (79, 92583), (84, 92514), (85, 92511), (103, 92295), (105, 92277), (106, 92271), (110, 92205), (116, 92166), (117, 92154), (119, 92127), (125, 92046), (128, 92013), (130, 91992), (133, 91959), (137, 91908), (141, 91890),

Gene: KSunshine22_95 Start: 77618, Stop: 79462, Start Num: 1

Candidate Starts for KSunshine22_95:

(Start: 1 @77618 has 1 MA's), (13, 77891), (23, 77999), (27, 78065), (35, 78134), (36, 78143), (44, 78218), (65, 78527), (66, 78572), (72, 78632), (76, 78677), (82, 78734), (83, 78740), (84, 78773), (86, 78785), (89, 78797), (99, 78914), (102, 78920), (109, 78983), (114, 79022), (115, 79043), (124, 79127), (130, 79220), (132, 79244), (147, 79412), (148, 79415),

Gene: Lederberg_45 Start: 37131, Stop: 38507, Start Num: 21

Candidate Starts for Lederberg_45:

(Start: 21 @37131 has 7 MA's), (27, 37200), (31, 37218), (39, 37311), (49, 37371), (51, 37377), (52, 37380), (57, 37500), (60, 37518), (63, 37635), (73, 37773), (76, 37812), (80, 37845), (81, 37851), (82, 37866), (84, 37905), (92, 37965), (95, 37989), (101, 38025), (110, 38094), (112, 38100), (120, 38181), (130, 38277), (131, 38289), (132, 38301), (136, 38358), (138, 38364), (140, 38376), (143, 38406), (146, 38457),

Gene: LeoJr_100 Start: 80857, Stop: 82713, Start Num: 1

Candidate Starts for LeoJr_100:

(Start: 1 @80857 has 1 MA's), (13, 81130), (23, 81235), (33, 81358), (35, 81370), (36, 81379), (47, 81475), (55, 81550), (58, 81610), (65, 81763), (66, 81808), (72, 81868), (76, 81913), (82, 81970), (83, 81976), (84, 82009), (86, 82021), (89, 82033), (99, 82150), (101, 82153), (108, 82210), (111, 82246), (114, 82258), (115, 82279), (124, 82363), (130, 82456), (132, 82480), (147, 82648), (148, 82651),

Gene: LuckyBarnes_64 Start: 49560, Stop: 48223, Start Num: 25

Candidate Starts for LuckyBarnes_64:

(17, 49698), (Start: 21 @49635 has 7 MA's), (Start: 25 @49560 has 1 MA's), (34, 49485), (35, 49479), (38, 49449), (41, 49401), (45, 49383), (53, 49344), (56, 49290), (59, 49221), (61, 49149), (64, 49083), (68, 49002), (76, 48915), (78, 48897), (79, 48891), (80, 48882), (87, 48807), (96, 48735), (107, 48648), (109, 48633), (110, 48609), (111, 48606), (112, 48603), (134, 48384), (136, 48345), (138, 48342), (143, 48300), (145, 48264),

Gene: Panchaali_97 Start: 77571, Stop: 79412, Start Num: 1

Candidate Starts for Panchaali_97:

(Start: 1 @77571 has 1 MA's), (10, 77829), (13, 77844), (23, 77949), (24, 77985), (27, 78015), (35, 78084), (36, 78093), (37, 78105), (40, 78138), (55, 78264), (65, 78477), (66, 78522), (72, 78582), (76, 78627), (82, 78684), (83, 78690), (84, 78723), (86, 78735), (89, 78747), (99, 78864), (101, 78867), (105, 78891), (109, 78933), (111, 78960), (115, 78993), (118, 79017), (124, 79077), (130, 79170), (132, 79194), (147, 79362), (148, 79365),

Gene: Phendrix_173 Start: 92821, Stop: 90896, Start Num: 2

Candidate Starts for Phendrix_173:

(Start: 2 @92821 has 2 MA's), (4, 92779), (7, 92665), (9, 92590), (15, 92521), (20, 92452), (46, 92179), (50, 92161), (54, 92137), (55, 92098), (62, 91918), (67, 91834), (69, 91810), (74, 91750), (76, 91738), (79, 91711), (84, 91642), (85, 91639), (98, 91474), (103, 91423), (106, 91399), (110, 91333), (116, 91294), (117, 91282), (125, 91174), (128, 91141), (130, 91120), (133, 91087), (137, 91036), (141, 91018),

Gene: ReginaGlobina_100 Start: 80422, Stop: 82278, Start Num: 1

Candidate Starts for ReginaGlobina_100:

(Start: 1 @80422 has 1 MA's), (13, 80695), (23, 80800), (33, 80923), (35, 80935), (36, 80944), (47, 81040), (55, 81115), (58, 81175), (65, 81328), (66, 81373), (72, 81433), (76, 81478), (82, 81535), (83, 81541), (84, 81574), (86, 81586), (89, 81598), (99, 81715), (101, 81718), (108, 81775), (111, 81811), (114, 81823), (115, 81844), (124, 81928), (130, 82021), (132, 82045), (147, 82213), (148, 82216),

Gene: Rockabye_105 Start: 73971, Stop: 75830, Start Num: 1

Candidate Starts for Rockabye_105:

(Start: 1 @73971 has 1 MA's), (8, 74187), (13, 74229), (14, 74235), (16, 74268), (22, 74337), (23, 74352), (24, 74388), (29, 74427), (37, 74508), (43, 74568), (64, 74871), (72, 74985), (76, 75030), (83, 75093), (84, 75126), (86, 75138), (91, 75186), (94, 75204), (99, 75270), (101, 75273), (104, 75291), (108, 75330), (115, 75399), (117, 75414), (119, 75441), (123, 75477), (124, 75483), (132, 75600), (144, 75720), (148, 75771),

Gene: SJReid_108 Start: 73084, Stop: 74940, Start Num: 1

Candidate Starts for SJReid_108:

(Start: 1 @73084 has 1 MA's), (13, 73342), (14, 73348), (16, 73381), (18, 73390), (22, 73450), (23, 73465), (29, 73540), (32, 73570), (37, 73621), (43, 73681), (64, 73984), (72, 74098), (76, 74143), (82, 74200), (83, 74206), (84, 74239), (86, 74251), (91, 74299), (93, 74308), (94, 74317), (101, 74386), (108, 74443), (115, 74512), (123, 74590), (124, 74596), (130, 74689), (132, 74713), (141, 74794), (144, 74833), (148, 74884),

Gene: SamW_45 Start: 36746, Stop: 38122, Start Num: 21

Candidate Starts for SamW_45:

(Start: 21 @36746 has 7 MA's), (27, 36815), (31, 36833), (39, 36926), (49, 36986), (51, 36992), (52, 36995), (57, 37115), (60, 37133), (63, 37250), (73, 37388), (76, 37427), (80, 37460), (81, 37466), (82, 37481), (84, 37520), (92, 37580), (95, 37604), (101, 37640), (110, 37709), (112, 37715), (120, 37796), (130, 37892), (131, 37904), (132, 37916), (136, 37973), (138, 37979), (140, 37991), (143, 38021), (146, 38072),

Gene: StAB_50 Start: 39824, Stop: 41185, Start Num: 21

Candidate Starts for StAB_50:

(Start: 21 @39824 has 7 MA's), (27, 39893), (31, 39911), (39, 40004), (48, 40058), (49, 40064), (51, 40070), (52, 40073), (57, 40193), (60, 40211), (63, 40328), (73, 40466), (76, 40505), (80, 40538), (81, 40544), (82, 40559), (84, 40598), (92, 40658), (101, 40718), (112, 40793), (120, 40874), (130, 40970), (136, 41051), (138, 41057), (140, 41069), (143, 41099),

Gene: Stiles_49 Start: 38782, Stop: 40143, Start Num: 21

Candidate Starts for Stiles_49:

(Start: 21 @38782 has 7 MA's), (28, 38857), (30, 38863), (31, 38869), (39, 38962), (48, 39016), (49, 39022), (51, 39028), (52, 39031), (57, 39151), (60, 39169), (63, 39286), (73, 39424), (76, 39463), (80, 39496), (81, 39502), (82, 39517), (84, 39556), (92, 39616), (112, 39751), (120, 39832), (130, 39928), (136, 40009), (138, 40015), (140, 40027), (143, 40057),

Gene: Troy_45 Start: 36746, Stop: 38122, Start Num: 21

Candidate Starts for Troy_45:

(Start: 21 @36746 has 7 MA's), (27, 36815), (31, 36833), (39, 36926), (49, 36986), (51, 36992), (52, 36995), (57, 37115), (60, 37133), (63, 37250), (73, 37388), (76, 37427), (80, 37460), (81, 37466), (82, 37481), (84, 37520), (92, 37580), (95, 37604), (101, 37640), (110, 37709), (112, 37715), (120, 37796), (130, 37892), (131, 37904), (132, 37916), (136, 37973), (138, 37979), (140, 37991), (143, 38021), (146, 38072),

Gene: WaddleDee_94 Start: 75744, Stop: 77588, Start Num: 1

Candidate Starts for WaddleDee_94:

(Start: 1 @75744 has 1 MA's), (13, 76017), (23, 76125), (27, 76191), (35, 76260), (36, 76269), (44, 76344), (65, 76653), (66, 76698), (71, 76737), (72, 76758), (76, 76803), (82, 76860), (83, 76866), (84, 76899), (86, 76911), (89, 76923), (99, 77040), (102, 77046), (111, 77136), (115, 77169), (124, 77253), (130, 77346), (132, 77370), (147, 77538), (148, 77541),

Gene: Zooman_98 Start: 76212, Stop: 74272, Start Num: 3

Candidate Starts for Zooman_98:

(Start: 3 @76212 has 2 MA's), (5, 76086), (6, 76059), (11, 75966), (12, 75963), (19, 75891), (24, 75810), (26, 75786), (42, 75510), (62, 75225), (64, 75204), (70, 75114), (75, 75054), (76, 75045), (77, 75030), (82, 74988), (83, 74982), (84, 74949), (86, 74937), (88, 74928), (90, 74904), (97, 74844), (100, 74808), (113, 74712), (114, 74706), (119, 74643), (121, 74622), (122, 74616), (126, 74541), (127, 74535), (129, 74514), (135, 74454), (139, 74412), (142, 74388), (143, 74376),