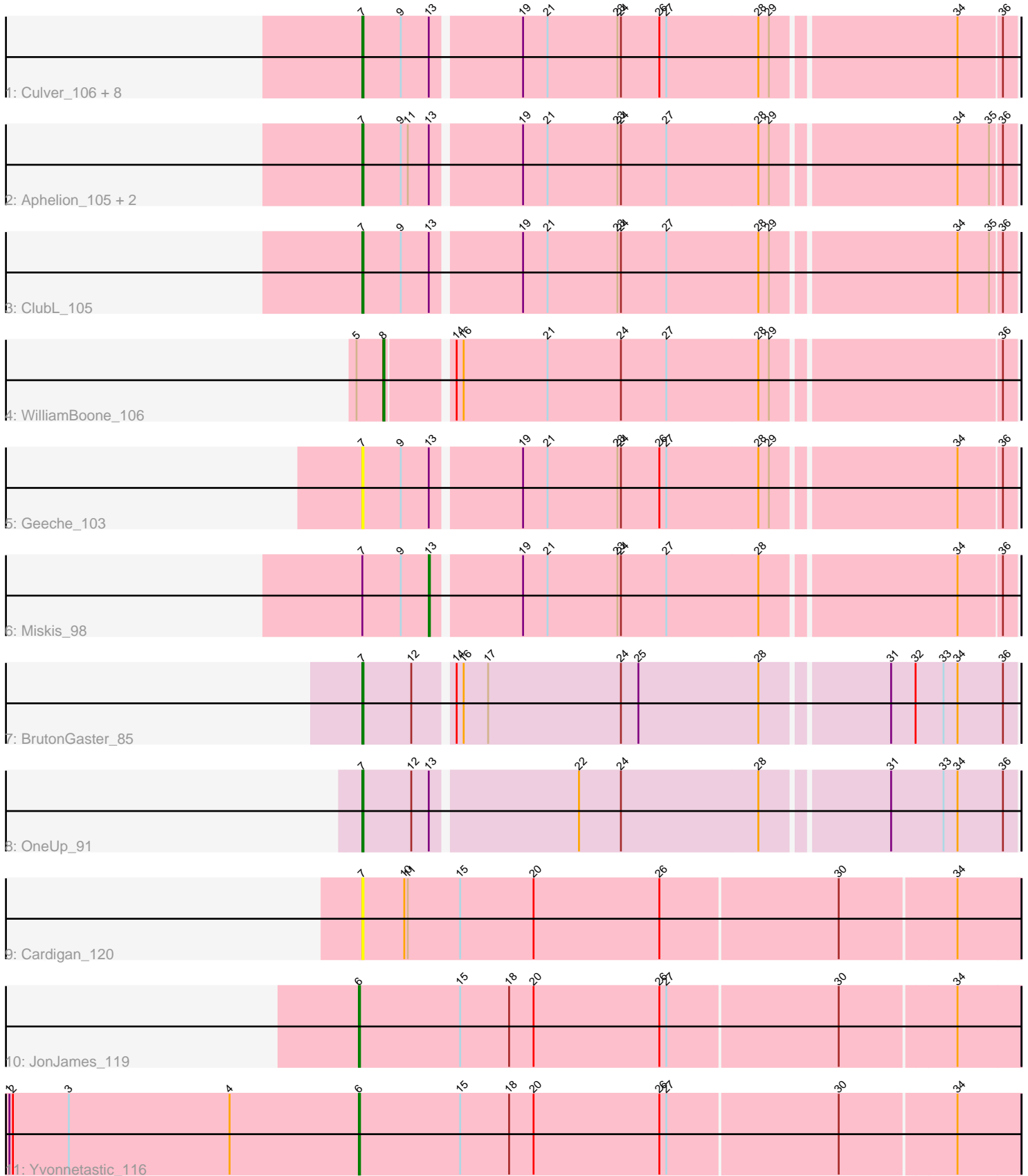


Pham 224893



Note: Tracks are now grouped by subcluster and scaled. Switching in subcluster is indicated by changes in track color. Track scale is now set by default to display the region 30 bp upstream of start 1 to 30 bp downstream of the last possible start. If this default region is judged to be packed too tightly with annotated starts, the track will be further scaled to only show that region of the ORF with annotated starts. This action will be indicated by adding "Zoomed" to the title. For starts, yellow indicates the location of called starts comprised solely of Glimmer/GeneMark auto-annotations, green indicates the location of called starts with at least 1 manual gene annotation.

Pham 224893 Report

This analysis was run 03/28/25 on database version 593.

Pham number 224893 has 21 members, 3 are drafts.

Phages represented in each track:

- Track 1 : Culver_106, Engineer_105, Smoothie_105, Cucurbita_105, PhinkBoden_103, Dusty_101, Bachita_106, Lozinak_104, Toniann_106
- Track 2 : Aphelion_105, Abscondus_103, Norvs_106
- Track 3 : ClubL_105
- Track 4 : WilliamBoone_106
- Track 5 : Geeche_103
- Track 6 : Miskis_98
- Track 7 : BrutonGaster_85
- Track 8 : OneUp_91
- Track 9 : Cardigan_120
- Track 10 : JonJames_119
- Track 11 : Yvonnetastic_116

Summary of Final Annotations (See graph section above for start numbers):

The start number called the most often in the published annotations is 7, it was called in 14 of the 18 non-draft genes in the pham.

Genes that call this "Most Annotated" start:

- Abscondus_103, Aphelion_105, Bachita_106, BrutonGaster_85, Cardigan_120, ClubL_105, Cucurbita_105, Culver_106, Dusty_101, Engineer_105, Geeche_103, Lozinak_104, Norvs_106, OneUp_91, PhinkBoden_103, Smoothie_105, Toniann_106,

Genes that have the "Most Annotated" start but do not call it:

- Miskis_98,

Genes that do not have the "Most Annotated" start:

- JonJames_119, WilliamBoone_106, Yvonnetastic_116,

Summary by start number:

Start 6:

- Found in 2 of 21 (9.5%) of genes in pham

- Manual Annotations of this start: 2 of 18
- Called 100.0% of time when present
- Phage (with cluster) where this start called: JonJames_119 (DD), Yvonnetastic_116 (DD),

Start 7:

- Found in 18 of 21 (85.7%) of genes in pham
- Manual Annotations of this start: 14 of 18
- Called 94.4% of time when present
- Phage (with cluster) where this start called: Abscondus_103 (CQ1), Aphelion_105 (CQ1), Bachita_106 (CQ1), BrutonGaster_85 (CQ2), Cardigan_120 (DD), ClubL_105 (CQ1), Cucurbita_105 (CQ1), Culver_106 (CQ1), Dusty_101 (CQ1), Engineer_105 (CQ1), Geeche_103 (CQ1), Lozinak_104 (CQ1), Norvs_106 (CQ1), OneUp_91 (CQ2), PhinkBoden_103 (CQ1), Smoothie_105 (CQ1), Toniann_106 (CQ1),

Start 8:

- Found in 1 of 21 (4.8%) of genes in pham
- Manual Annotations of this start: 1 of 18
- Called 100.0% of time when present
- Phage (with cluster) where this start called: WilliamBoone_106 (CQ1),

Start 13:

- Found in 16 of 21 (76.2%) of genes in pham
- Manual Annotations of this start: 1 of 18
- Called 6.2% of time when present
- Phage (with cluster) where this start called: Miskis_98 (CQ1),

Summary by clusters:

There are 3 clusters represented in this pham: CQ2, CQ1, DD,

Info for manual annotations of cluster CQ1:

- Start number 7 was manually annotated 12 times for cluster CQ1.
- Start number 8 was manually annotated 1 time for cluster CQ1.
- Start number 13 was manually annotated 1 time for cluster CQ1.

Info for manual annotations of cluster CQ2:

- Start number 7 was manually annotated 2 times for cluster CQ2.

Info for manual annotations of cluster DD:

- Start number 6 was manually annotated 2 times for cluster DD.

Gene Information:

Gene: Abscondus_103 Start: 62014, Stop: 62550, Start Num: 7

Candidate Starts for Abscondus_103:

(Start: 7 @62014 has 14 MA's), (9, 62047), (11, 62053), (Start: 13 @62071 has 1 MA's), (19, 62143), (21, 62164), (23, 62224), (24, 62227), (27, 62266), (28, 62344), (29, 62353), (34, 62503), (35, 62530), (36, 62539),

Gene: Aphelion_105 Start: 63567, Stop: 64103, Start Num: 7

Candidate Starts for Aphelion_105:

(Start: 7 @63567 has 14 MA's), (9, 63600), (11, 63606), (Start: 13 @63624 has 1 MA's), (19, 63696), (21, 63717), (23, 63777), (24, 63780), (27, 63819), (28, 63897), (29, 63906), (34, 64056), (35, 64083), (36, 64092),

Gene: Bachita_106 Start: 63225, Stop: 63761, Start Num: 7

Candidate Starts for Bachita_106:

(Start: 7 @63225 has 14 MA's), (9, 63258), (Start: 13 @63282 has 1 MA's), (19, 63354), (21, 63375), (23, 63435), (24, 63438), (26, 63471), (27, 63477), (28, 63555), (29, 63564), (34, 63714), (36, 63750),

Gene: BrutonGaster_85 Start: 57332, Stop: 57871, Start Num: 7

Candidate Starts for BrutonGaster_85:

(Start: 7 @57332 has 14 MA's), (12, 57374), (14, 57404), (16, 57410), (17, 57431), (24, 57545), (25, 57560), (28, 57662), (31, 57764), (32, 57785), (33, 57809), (34, 57821), (36, 57860),

Gene: Cardigan_120 Start: 68409, Stop: 68963, Start Num: 7

Candidate Starts for Cardigan_120:

(Start: 7 @68409 has 14 MA's), (10, 68445), (11, 68448), (15, 68493), (20, 68556), (26, 68664), (30, 68814), (34, 68910),

Gene: ClubL_105 Start: 62155, Stop: 62691, Start Num: 7

Candidate Starts for ClubL_105:

(Start: 7 @62155 has 14 MA's), (9, 62188), (Start: 13 @62212 has 1 MA's), (19, 62284), (21, 62305), (23, 62365), (24, 62368), (27, 62407), (28, 62485), (29, 62494), (34, 62644), (35, 62671), (36, 62680),

Gene: Cucurbita_105 Start: 63732, Stop: 64268, Start Num: 7

Candidate Starts for Cucurbita_105:

(Start: 7 @63732 has 14 MA's), (9, 63765), (Start: 13 @63789 has 1 MA's), (19, 63861), (21, 63882), (23, 63942), (24, 63945), (26, 63978), (27, 63984), (28, 64062), (29, 64071), (34, 64221), (36, 64257),

Gene: Culver_106 Start: 62054, Stop: 62590, Start Num: 7

Candidate Starts for Culver_106:

(Start: 7 @62054 has 14 MA's), (9, 62087), (Start: 13 @62111 has 1 MA's), (19, 62183), (21, 62204), (23, 62264), (24, 62267), (26, 62300), (27, 62306), (28, 62384), (29, 62393), (34, 62543), (36, 62579),

Gene: Dusty_101 Start: 62073, Stop: 62609, Start Num: 7

Candidate Starts for Dusty_101:

(Start: 7 @62073 has 14 MA's), (9, 62106), (Start: 13 @62130 has 1 MA's), (19, 62202), (21, 62223), (23, 62283), (24, 62286), (26, 62319), (27, 62325), (28, 62403), (29, 62412), (34, 62562), (36, 62598),

Gene: Engineer_105 Start: 63198, Stop: 63734, Start Num: 7

Candidate Starts for Engineer_105:

(Start: 7 @63198 has 14 MA's), (9, 63231), (Start: 13 @63255 has 1 MA's), (19, 63327), (21, 63348), (23, 63408), (24, 63411), (26, 63444), (27, 63450), (28, 63528), (29, 63537), (34, 63687), (36, 63723),

Gene: Geeche_103 Start: 62296, Stop: 62832, Start Num: 7

Candidate Starts for Geeche_103:

(Start: 7 @62296 has 14 MA's), (9, 62329), (Start: 13 @62353 has 1 MA's), (19, 62425), (21, 62446), (23, 62506), (24, 62509), (26, 62542), (27, 62548), (28, 62626), (29, 62635), (34, 62785), (36, 62821),

Gene: JonJames_119 Start: 69097, Stop: 69654, Start Num: 6

Candidate Starts for JonJames_119:

(Start: 6 @69097 has 2 MA's), (15, 69184), (18, 69226), (20, 69247), (26, 69355), (27, 69361), (30, 69505), (34, 69601),

Gene: Lozinak_104 Start: 63036, Stop: 63572, Start Num: 7

Candidate Starts for Lozinak_104:

(Start: 7 @63036 has 14 MA's), (9, 63069), (Start: 13 @63093 has 1 MA's), (19, 63165), (21, 63186), (23, 63246), (24, 63249), (26, 63282), (27, 63288), (28, 63366), (29, 63375), (34, 63525), (36, 63561),

Gene: Miskis_98 Start: 61793, Stop: 62272, Start Num: 13

Candidate Starts for Miskis_98:

(Start: 7 @61736 has 14 MA's), (9, 61769), (Start: 13 @61793 has 1 MA's), (19, 61865), (21, 61886), (23, 61946), (24, 61949), (27, 61988), (28, 62066), (34, 62225), (36, 62261),

Gene: Norvs_106 Start: 63063, Stop: 63599, Start Num: 7

Candidate Starts for Norvs_106:

(Start: 7 @63063 has 14 MA's), (9, 63096), (11, 63102), (Start: 13 @63120 has 1 MA's), (19, 63192), (21, 63213), (23, 63273), (24, 63276), (27, 63315), (28, 63393), (29, 63402), (34, 63552), (35, 63579), (36, 63588),

Gene: OneUp_91 Start: 59239, Stop: 59778, Start Num: 7

Candidate Starts for OneUp_91:

(Start: 7 @59239 has 14 MA's), (12, 59281), (Start: 13 @59296 has 1 MA's), (22, 59416), (24, 59452), (28, 59569), (31, 59671), (33, 59716), (34, 59728), (36, 59767),

Gene: PhinkBoden_103 Start: 62826, Stop: 63362, Start Num: 7

Candidate Starts for PhinkBoden_103:

(Start: 7 @62826 has 14 MA's), (9, 62859), (Start: 13 @62883 has 1 MA's), (19, 62955), (21, 62976), (23, 63036), (24, 63039), (26, 63072), (27, 63078), (28, 63156), (29, 63165), (34, 63315), (36, 63351),

Gene: Smoothie_105 Start: 63036, Stop: 63572, Start Num: 7

Candidate Starts for Smoothie_105:

(Start: 7 @63036 has 14 MA's), (9, 63069), (Start: 13 @63093 has 1 MA's), (19, 63165), (21, 63186), (23, 63246), (24, 63249), (26, 63282), (27, 63288), (28, 63366), (29, 63375), (34, 63525), (36, 63561),

Gene: Toniann_106 Start: 63006, Stop: 63542, Start Num: 7

Candidate Starts for Toniann_106:

(Start: 7 @63006 has 14 MA's), (9, 63039), (Start: 13 @63063 has 1 MA's), (19, 63135), (21, 63156), (23, 63216), (24, 63219), (26, 63252), (27, 63258), (28, 63336), (29, 63345), (34, 63495), (36, 63531),

Gene: WilliamBoone_106 Start: 61643, Stop: 62158, Start Num: 8

Candidate Starts for WilliamBoone_106:

(5, 61622), (Start: 8 @61643 has 1 MA's), (14, 61694), (16, 61700), (21, 61772), (24, 61835), (27, 61874), (28, 61952), (29, 61961), (36, 62147),

Gene: Yvonnetastic_116 Start: 65875, Stop: 66432, Start Num: 6

Candidate Starts for Yvonnetastic_116:

(1, 65575), (2, 65578), (3, 65626), (4, 65764), (Start: 6 @65875 has 2 MA's), (15, 65962), (18, 66004), (20, 66025), (26, 66133), (27, 66139), (30, 66283), (34, 66379),