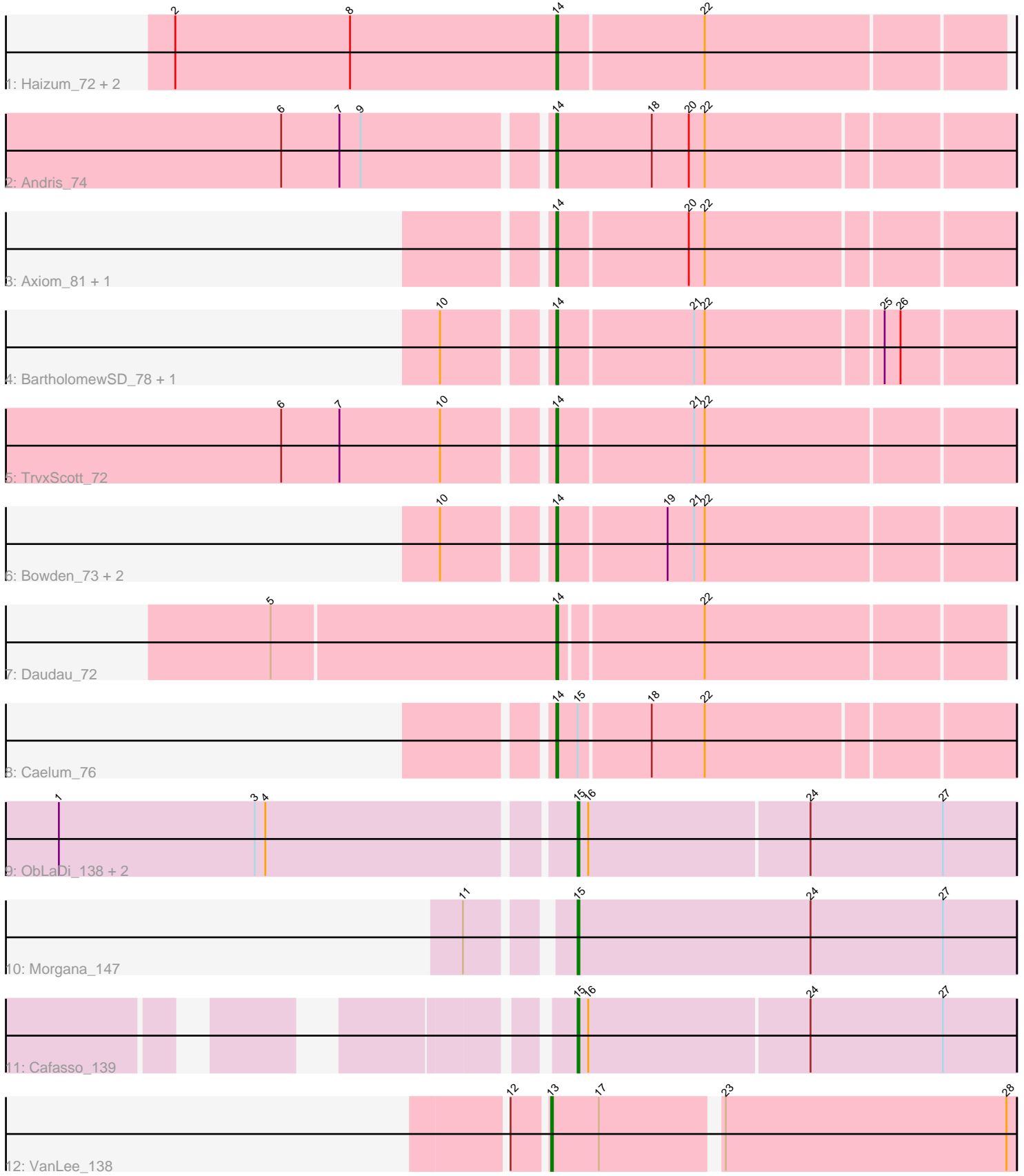


Pham 224906



Note: Tracks are now grouped by subcluster and scaled. Switching in subcluster is indicated by changes in track color. Track scale is now set by default to display the region 30 bp upstream of start 1 to 30 bp downstream of the last possible start. If this default region is judged to be packed too tightly with annotated starts, the track will be further scaled to only show that region of the ORF with annotated starts. This action will be indicated by adding "Zoomed" to the title. For starts, yellow indicates the location of called starts comprised solely of Glimmer/GeneMark auto-annotations, green indicates the location of called starts with at least 1 manual gene annotation.

Pham 224906 Report

This analysis was run 03/28/25 on database version 593.

Pham number 224906 has 20 members, 2 are drafts.

Phages represented in each track:

- Track 1 : Haizum_72, Nishikigoi_73, Tefunt_72
- Track 2 : Andris_74
- Track 3 : Axiom_81, Triumph_76
- Track 4 : BartholomewSD_78, Alvy_78
- Track 5 : TrvxScott_72
- Track 6 : Bowden_73, TinaBelcher_73, Thestral_75
- Track 7 : Daudau_72
- Track 8 : Caelum_76
- Track 9 : ObLaDi_138, Aleemily_137, ModicumRichard_139
- Track 10 : Morgana_147
- Track 11 : Cafasso_139
- Track 12 : VanLee_138

Summary of Final Annotations (See graph section above for start numbers):

The start number called the most often in the published annotations is 14, it was called in 13 of the 18 non-draft genes in the pham.

Genes that call this "Most Annotated" start:

- Alvy_78, Andris_74, Axiom_81, BartholomewSD_78, Bowden_73, Caelum_76, Daudau_72, Haizum_72, Nishikigoi_73, Tefunt_72, Thestral_75, TinaBelcher_73, Triumph_76, TrvxScott_72,

Genes that have the "Most Annotated" start but do not call it:

-

Genes that do not have the "Most Annotated" start:

- Aleemily_137, Cafasso_139, ModicumRichard_139, Morgana_147, ObLaDi_138, VanLee_138,

Summary by start number:

Start 13:

- Found in 1 of 20 (5.0%) of genes in pham

- Manual Annotations of this start: 1 of 18
- Called 100.0% of time when present
- Phage (with cluster) where this start called: VanLee_138 (singleton),

Start 14:

- Found in 14 of 20 (70.0%) of genes in pham
- Manual Annotations of this start: 13 of 18
- Called 100.0% of time when present
- Phage (with cluster) where this start called: Alvy_78 (BD2), Andris_74 (BD2), Axiom_81 (BD2), BartholomewSD_78 (BD2), Bowden_73 (BD2), Caelum_76 (BD2), Daudau_72 (BD2), Haizum_72 (BD2), Nishikigoi_73 (BD2), Tefunt_72 (BD2), Thestral_75 (BD2), TinaBelcher_73 (BD2), Triumph_76 (BD2), TrvxScott_72 (BD2),

Start 15:

- Found in 6 of 20 (30.0%) of genes in pham
- Manual Annotations of this start: 4 of 18
- Called 83.3% of time when present
- Phage (with cluster) where this start called: Aleemily_137 (DZ), Cafasso_139 (DZ), ModicumRichard_139 (DZ), Morgana_147 (DZ), ObLaDi_138 (DZ),

Summary by clusters:

There are 3 clusters represented in this pham: singleton, DZ, BD2,

Info for manual annotations of cluster BD2:

- Start number 14 was manually annotated 13 times for cluster BD2.

Info for manual annotations of cluster DZ:

- Start number 15 was manually annotated 4 times for cluster DZ.

Gene Information:

Gene: Aleemily_137 Start: 74113, Stop: 73868, Start Num: 15

Candidate Starts for Aleemily_137:

(1, 74395), (3, 74284), (4, 74278), (Start: 15 @74113 has 4 MA's), (16, 74107), (24, 73984), (27, 73909),

Gene: Alvy_78 Start: 48425, Stop: 48177, Start Num: 14

Candidate Starts for Alvy_78:

(10, 48479), (Start: 14 @48425 has 13 MA's), (21, 48350), (22, 48344), (25, 48248), (26, 48239),

Gene: Andris_74 Start: 46401, Stop: 46150, Start Num: 14

Candidate Starts for Andris_74:

(6, 46545), (7, 46512), (9, 46500), (Start: 14 @46401 has 13 MA's), (18, 46347), (20, 46326), (22, 46317),

Gene: Axiom_81 Start: 47433, Stop: 47185, Start Num: 14

Candidate Starts for Axiom_81:

(Start: 14 @47433 has 13 MA's), (20, 47361), (22, 47352),

Gene: BartholomewSD_78 Start: 47544, Stop: 47296, Start Num: 14

Candidate Starts for BartholomewSD_78:

(10, 47598), (Start: 14 @47544 has 13 MA's), (21, 47469), (22, 47463), (25, 47367), (26, 47358),

Gene: Bowden_73 Start: 48118, Stop: 47867, Start Num: 14

Candidate Starts for Bowden_73:

(10, 48172), (Start: 14 @48118 has 13 MA's), (19, 48058), (21, 48043), (22, 48037),

Gene: Caelum_76 Start: 46458, Stop: 46210, Start Num: 14

Candidate Starts for Caelum_76:

(Start: 14 @46458 has 13 MA's), (Start: 15 @46446 has 4 MA's), (18, 46407), (22, 46377),

Gene: Cafasso_139 Start: 74720, Stop: 74475, Start Num: 15

Candidate Starts for Cafasso_139:

(Start: 15 @74720 has 4 MA's), (16, 74714), (24, 74591), (27, 74516),

Gene: Daudau_72 Start: 45726, Stop: 45484, Start Num: 14

Candidate Starts for Daudau_72:

(5, 45885), (Start: 14 @45726 has 13 MA's), (22, 45648),

Gene: Haizum_72 Start: 46309, Stop: 46064, Start Num: 14

Candidate Starts for Haizum_72:

(2, 46525), (8, 46426), (Start: 14 @46309 has 13 MA's), (22, 46228),

Gene: ModicumRichard_139 Start: 75008, Stop: 74763, Start Num: 15

Candidate Starts for ModicumRichard_139:

(1, 75290), (3, 75179), (4, 75173), (Start: 15 @75008 has 4 MA's), (16, 75002), (24, 74879), (27, 74804),

Gene: Morgana_147 Start: 76610, Stop: 76362, Start Num: 15

Candidate Starts for Morgana_147:

(11, 76658), (Start: 15 @76610 has 4 MA's), (24, 76478), (27, 76403),

Gene: Nishikigoi_73 Start: 46309, Stop: 46064, Start Num: 14

Candidate Starts for Nishikigoi_73:

(2, 46525), (8, 46426), (Start: 14 @46309 has 13 MA's), (22, 46228),

Gene: ObLaDi_138 Start: 74410, Stop: 74165, Start Num: 15

Candidate Starts for ObLaDi_138:

(1, 74692), (3, 74581), (4, 74575), (Start: 15 @74410 has 4 MA's), (16, 74404), (24, 74281), (27, 74206),

Gene: Tefunt_72 Start: 46223, Stop: 45978, Start Num: 14

Candidate Starts for Tefunt_72:

(2, 46439), (8, 46340), (Start: 14 @46223 has 13 MA's), (22, 46142),

Gene: Thestral_75 Start: 48145, Stop: 47894, Start Num: 14

Candidate Starts for Thestral_75:

(10, 48199), (Start: 14 @48145 has 13 MA's), (19, 48085), (21, 48070), (22, 48064),

Gene: TinaBelcher_73 Start: 48007, Stop: 47756, Start Num: 14

Candidate Starts for TinaBelcher_73:

(10, 48061), (Start: 14 @48007 has 13 MA's), (19, 47947), (21, 47932), (22, 47926),

Gene: Triumph_76 Start: 47171, Stop: 46923, Start Num: 14

Candidate Starts for Triumph_76:

(Start: 14 @47171 has 13 MA's), (20, 47099), (22, 47090),

Gene: TrvxScott_72 Start: 48112, Stop: 47861, Start Num: 14

Candidate Starts for TrvxScott_72:

(6, 48256), (7, 48223), (10, 48166), (Start: 14 @48112 has 13 MA's), (21, 48037), (22, 48031),

Gene: VanLee_138 Start: 73847, Stop: 73593, Start Num: 13

Candidate Starts for VanLee_138:

(12, 73865), (Start: 13 @73847 has 1 MA's), (17, 73820), (23, 73757), (28, 73598),