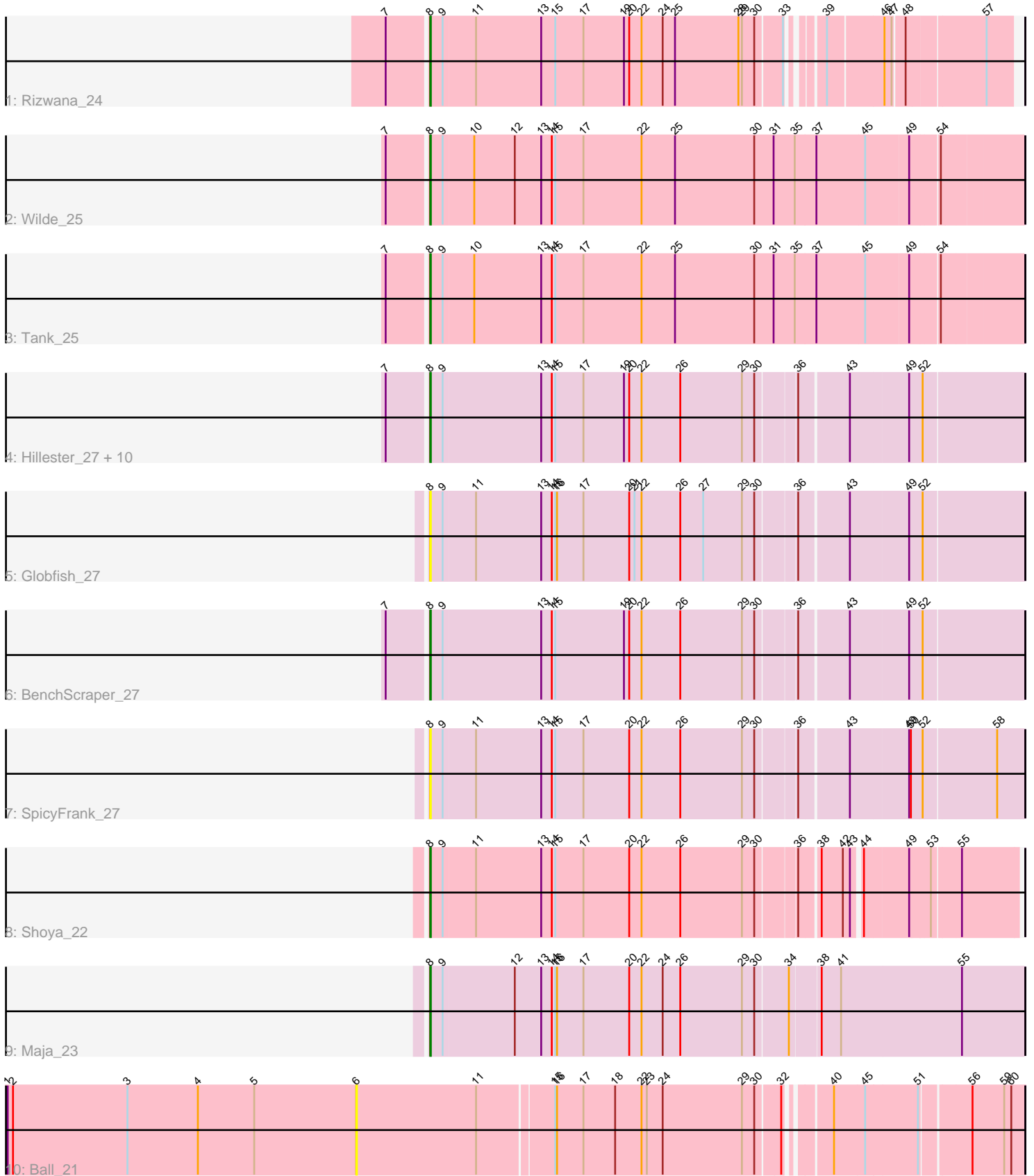


Pham 224909



Note: Tracks are now grouped by subcluster and scaled. Switching in subcluster is indicated by changes in track color. Track scale is now set by default to display the region 30 bp upstream of start 1 to 30 bp downstream of the last possible start. If this default region is judged to be packed too tightly with annotated starts, the track will be further scaled to only show that region of the ORF with annotated starts. This action will be indicated by adding "Zoomed" to the title. For starts, yellow indicates the location of called starts comprised solely of Glimmer/GeneMark auto-annotations, green indicates the location of called starts with at least 1 manual gene annotation.

Pham 224909 Report

This analysis was run 03/28/25 on database version 593.

Pham number 224909 has 20 members, 10 are drafts.

Phages represented in each track:

- Track 1 : Rizwana_24
- Track 2 : Wilde_25
- Track 3 : Tank_25
- Track 4 : Hillester_27, Aikyam_27, RadFad_27, CookieBear_28, MaterMagnus_27, YoungHarleezy_27, Richie_27, BlueShadow_28, MidnightRain_27, Windest_28, Auxilium_27
- Track 5 : Globfish_27
- Track 6 : BenchScraper_27
- Track 7 : SpicyFrank_27
- Track 8 : Shoya_22
- Track 9 : Maja_23
- Track 10 : Ball_21

Summary of Final Annotations (See graph section above for start numbers):

The start number called the most often in the published annotations is 8, it was called in 10 of the 10 non-draft genes in the pham.

Genes that call this "Most Annotated" start:

- Aikyam_27, Auxilium_27, BenchScraper_27, BlueShadow_28, CookieBear_28, Globfish_27, Hillester_27, Maja_23, MaterMagnus_27, MidnightRain_27, RadFad_27, Richie_27, Rizwana_24, Shoya_22, SpicyFrank_27, Tank_25, Wilde_25, Windest_28, YoungHarleezy_27,

Genes that have the "Most Annotated" start but do not call it:

-

Genes that do not have the "Most Annotated" start:

- Ball_21,

Summary by start number:

Start 6:

- Found in 1 of 20 (5.0%) of genes in pham

- No Manual Annotations of this start.
- Called 100.0% of time when present
- Phage (with cluster) where this start called: Ball_21 (singleton),

Start 8:

- Found in 19 of 20 (95.0%) of genes in pham
- Manual Annotations of this start: 10 of 10
- Called 100.0% of time when present
- Phage (with cluster) where this start called: Aikyam_27 (AY), Auxilium_27 (AY), BenchScraper_27 (AY), BlueShadow_28 (AY), CookieBear_28 (AY), Globfish_27 (AY), Hillester_27 (AY), Maja_23 (FO), MaterMagnus_27 (AY), MidnightRain_27 (AY), RadFad_27 (AY), Richie_27 (AY), Rizwana_24 (AP1), Shoya_22 (FB), SpicyFrank_27 (AY), Tank_25 (AP1), Wilde_25 (AP1), Windest_28 (AY), YoungHarleezy_27 (AY),

Summary by clusters:

There are 5 clusters represented in this pham: AY, FB, AP1, singleton, FO,

Info for manual annotations of cluster AP1:

- Start number 8 was manually annotated 3 times for cluster AP1.

Info for manual annotations of cluster AY:

- Start number 8 was manually annotated 5 times for cluster AY.

Info for manual annotations of cluster FB:

- Start number 8 was manually annotated 1 time for cluster FB.

Info for manual annotations of cluster FO:

- Start number 8 was manually annotated 1 time for cluster FO.

Gene Information:

Gene: Aikyam_27 Start: 19476, Stop: 20438, Start Num: 8

Candidate Starts for Aikyam_27:

(7, 19410), (Start: 8 @19476 has 10 MA's), (9, 19497), (13, 19662), (14, 19680), (15, 19686), (17, 19734), (19, 19803), (20, 19812), (22, 19833), (26, 19899), (29, 20004), (30, 20025), (36, 20085), (43, 20160), (49, 20256), (52, 20277),

Gene: Auxilium_27 Start: 19466, Stop: 20428, Start Num: 8

Candidate Starts for Auxilium_27:

(7, 19400), (Start: 8 @19466 has 10 MA's), (9, 19487), (13, 19652), (14, 19670), (15, 19676), (17, 19724), (19, 19793), (20, 19802), (22, 19823), (26, 19889), (29, 19994), (30, 20015), (36, 20075), (43, 20150), (49, 20246), (52, 20267),

Gene: Ball_21 Start: 17449, Stop: 18516, Start Num: 6

Candidate Starts for Ball_21:

(1, 16855), (2, 16864), (3, 17059), (4, 17179), (5, 17275), (6, 17449), (11, 17653), (15, 17776), (16, 17779), (17, 17824), (18, 17878), (22, 17923), (23, 17932), (24, 17959), (29, 18094), (30, 18115), (32, 18154), (40, 18214), (45, 18265), (51, 18349), (56, 18427), (59, 18481), (60, 18493),

Gene: BenchScraper_27 Start: 19481, Stop: 20443, Start Num: 8

Candidate Starts for BenchScraper_27:

(7, 19415), (Start: 8 @19481 has 10 MA's), (9, 19502), (13, 19667), (14, 19685), (15, 19691), (19, 19808), (20, 19817), (22, 19838), (26, 19904), (29, 20009), (30, 20030), (36, 20090), (43, 20165), (49, 20261), (52, 20282),

Gene: BlueShadow_28 Start: 19466, Stop: 20428, Start Num: 8

Candidate Starts for BlueShadow_28:

(7, 19400), (Start: 8 @19466 has 10 MA's), (9, 19487), (13, 19652), (14, 19670), (15, 19676), (17, 19724), (19, 19793), (20, 19802), (22, 19823), (26, 19889), (29, 19994), (30, 20015), (36, 20075), (43, 20150), (49, 20246), (52, 20267),

Gene: CookieBear_28 Start: 19466, Stop: 20428, Start Num: 8

Candidate Starts for CookieBear_28:

(7, 19400), (Start: 8 @19466 has 10 MA's), (9, 19487), (13, 19652), (14, 19670), (15, 19676), (17, 19724), (19, 19793), (20, 19802), (22, 19823), (26, 19889), (29, 19994), (30, 20015), (36, 20075), (43, 20150), (49, 20246), (52, 20267),

Gene: Globfish_27 Start: 19700, Stop: 20662, Start Num: 8

Candidate Starts for Globfish_27:

(Start: 8 @19700 has 10 MA's), (9, 19721), (11, 19775), (13, 19886), (14, 19904), (15, 19910), (16, 19913), (17, 19958), (20, 20036), (21, 20045), (22, 20057), (26, 20123), (27, 20162), (29, 20228), (30, 20249), (36, 20309), (43, 20384), (49, 20480), (52, 20501),

Gene: Hillester_27 Start: 19466, Stop: 20428, Start Num: 8

Candidate Starts for Hillester_27:

(7, 19400), (Start: 8 @19466 has 10 MA's), (9, 19487), (13, 19652), (14, 19670), (15, 19676), (17, 19724), (19, 19793), (20, 19802), (22, 19823), (26, 19889), (29, 19994), (30, 20015), (36, 20075), (43, 20150), (49, 20246), (52, 20267),

Gene: Maja_23 Start: 17865, Stop: 18857, Start Num: 8

Candidate Starts for Maja_23:

(Start: 8 @17865 has 10 MA's), (9, 17886), (12, 18006), (13, 18051), (14, 18069), (15, 18075), (16, 18078), (17, 18123), (20, 18201), (22, 18222), (24, 18258), (26, 18288), (29, 18393), (30, 18414), (34, 18468), (38, 18516), (41, 18549), (55, 18753),

Gene: MaterMagnus_27 Start: 19476, Stop: 20438, Start Num: 8

Candidate Starts for MaterMagnus_27:

(7, 19410), (Start: 8 @19476 has 10 MA's), (9, 19497), (13, 19662), (14, 19680), (15, 19686), (17, 19734), (19, 19803), (20, 19812), (22, 19833), (26, 19899), (29, 20004), (30, 20025), (36, 20085), (43, 20160), (49, 20256), (52, 20277),

Gene: MidnightRain_27 Start: 19465, Stop: 20427, Start Num: 8

Candidate Starts for MidnightRain_27:

(7, 19399), (Start: 8 @19465 has 10 MA's), (9, 19486), (13, 19651), (14, 19669), (15, 19675), (17, 19723), (19, 19792), (20, 19801), (22, 19822), (26, 19888), (29, 19993), (30, 20014), (36, 20074), (43, 20149), (49, 20245), (52, 20266),

Gene: RadFad_27 Start: 19466, Stop: 20428, Start Num: 8

Candidate Starts for RadFad_27:

(7, 19400), (Start: 8 @19466 has 10 MA's), (9, 19487), (13, 19652), (14, 19670), (15, 19676), (17, 19724), (19, 19793), (20, 19802), (22, 19823), (26, 19889), (29, 19994), (30, 20015), (36, 20075), (43, 20150), (49, 20246), (52, 20267),

Gene: Richie_27 Start: 19481, Stop: 20443, Start Num: 8

Candidate Starts for Richie_27:

(7, 19415), (Start: 8 @19481 has 10 MA's), (9, 19502), (13, 19667), (14, 19685), (15, 19691), (17, 19739), (19, 19808), (20, 19817), (22, 19838), (26, 19904), (29, 20009), (30, 20030), (36, 20090), (43, 20165), (49, 20261), (52, 20282),

Gene: Rizwana_24 Start: 17371, Stop: 18291, Start Num: 8

Candidate Starts for Rizwana_24:

(7, 17305), (Start: 8 @17371 has 10 MA's), (9, 17392), (11, 17446), (13, 17557), (15, 17581), (17, 17629), (19, 17698), (20, 17707), (22, 17728), (24, 17764), (25, 17785), (28, 17893), (29, 17899), (30, 17920), (33, 17962), (39, 18001), (46, 18091), (47, 18103), (48, 18121), (57, 18247),

Gene: Shoya_22 Start: 17058, Stop: 17999, Start Num: 8

Candidate Starts for Shoya_22:

(Start: 8 @17058 has 10 MA's), (9, 17079), (11, 17133), (13, 17244), (14, 17262), (15, 17268), (17, 17316), (20, 17394), (22, 17415), (26, 17481), (29, 17586), (30, 17607), (36, 17667), (38, 17697), (42, 17733), (43, 17742), (44, 17754), (49, 17826), (53, 17859), (55, 17904),

Gene: SpicyFrank_27 Start: 19701, Stop: 20663, Start Num: 8

Candidate Starts for SpicyFrank_27:

(Start: 8 @19701 has 10 MA's), (9, 19722), (11, 19776), (13, 19887), (14, 19905), (15, 19911), (17, 19959), (20, 20037), (22, 20058), (26, 20124), (29, 20229), (30, 20250), (36, 20310), (43, 20385), (49, 20481), (50, 20484), (52, 20502), (58, 20619),

Gene: Tank_25 Start: 17245, Stop: 18228, Start Num: 8

Candidate Starts for Tank_25:

(7, 17179), (Start: 8 @17245 has 10 MA's), (9, 17266), (10, 17317), (13, 17431), (14, 17449), (15, 17455), (17, 17503), (22, 17602), (25, 17659), (30, 17794), (31, 17827), (35, 17863), (37, 17899), (45, 17980), (49, 18052), (54, 18097),

Gene: Wilde_25 Start: 17174, Stop: 18157, Start Num: 8

Candidate Starts for Wilde_25:

(7, 17108), (Start: 8 @17174 has 10 MA's), (9, 17195), (10, 17246), (12, 17315), (13, 17360), (14, 17378), (15, 17384), (17, 17432), (22, 17531), (25, 17588), (30, 17723), (31, 17756), (35, 17792), (37, 17828), (45, 17909), (49, 17981), (54, 18026),

Gene: Windest_28 Start: 19531, Stop: 20493, Start Num: 8

Candidate Starts for Windest_28:

(7, 19465), (Start: 8 @19531 has 10 MA's), (9, 19552), (13, 19717), (14, 19735), (15, 19741), (17, 19789), (19, 19858), (20, 19867), (22, 19888), (26, 19954), (29, 20059), (30, 20080), (36, 20140), (43, 20215), (49, 20311), (52, 20332),

Gene: YoungHarleezy_27 Start: 19479, Stop: 20441, Start Num: 8

Candidate Starts for YoungHarleezy_27:

(7, 19413), (Start: 8 @19479 has 10 MA's), (9, 19500), (13, 19665), (14, 19683), (15, 19689), (17, 19737), (19, 19806), (20, 19815), (22, 19836), (26, 19902), (29, 20007), (30, 20028), (36, 20088), (43, 20163), (49, 20259), (52, 20280),