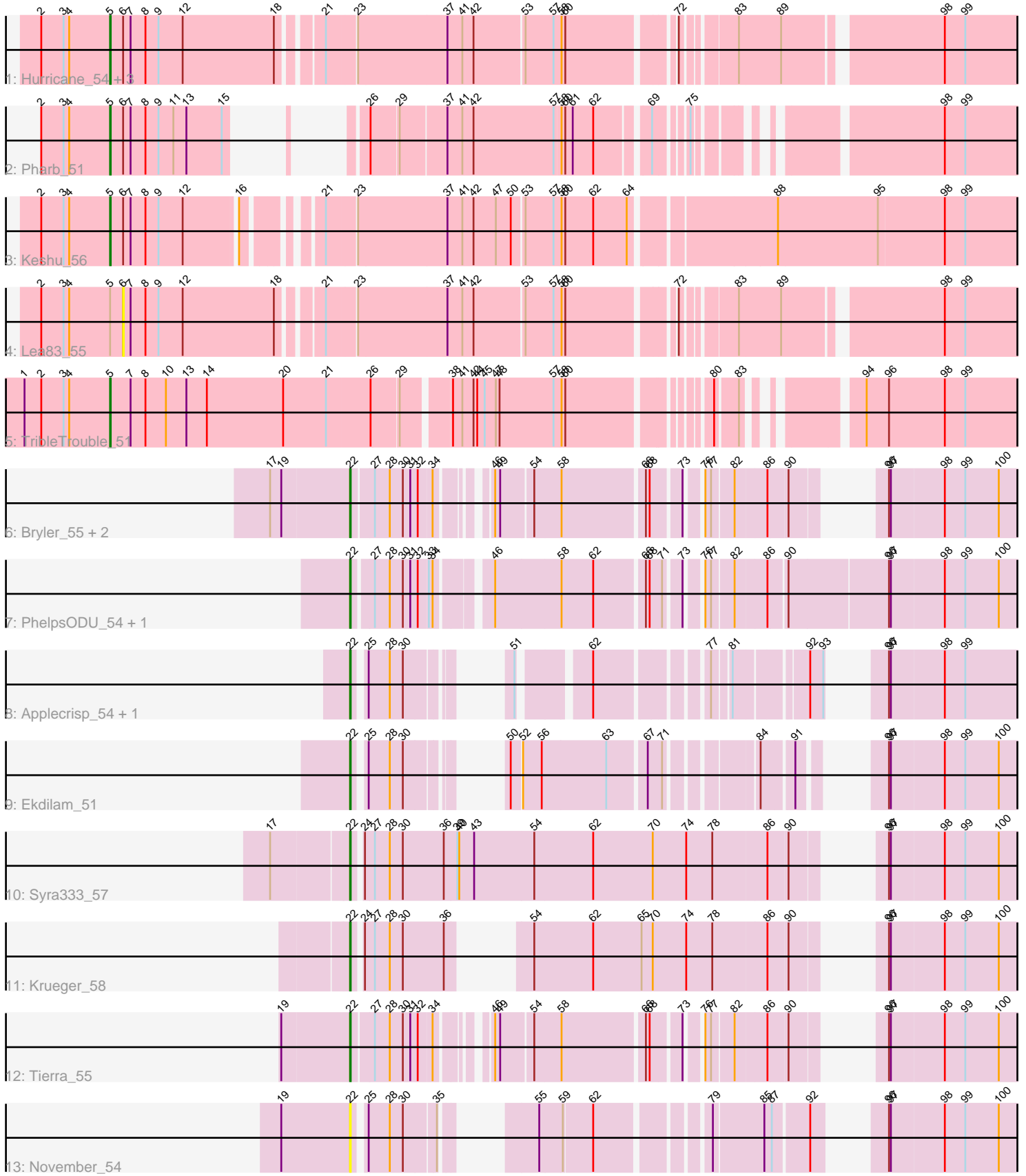


# Pham 224915



Note: Tracks are now grouped by subcluster and scaled. Switching in subcluster is indicated by changes in track color. Track scale is now set by default to display the region 30 bp upstream of start 1 to 30 bp downstream of the last possible start. If this default region is judged to be packed too tightly with annotated starts, the track will be further scaled to only show that region of the ORF with annotated starts. This action will be indicated by adding "Zoomed" to the title. For starts, yellow indicates the location of called starts comprised solely of Glimmer/GeneMark auto-annotations, green indicates the location of called starts with at least 1 manual gene annotation.

## Pham 224915 Report

This analysis was run 03/28/25 on database version 593.

Pham number 224915 has 20 members, 3 are drafts.

Phages represented in each track:

- Track 1 : Hurricane\_54, Pixie\_53, ShedlockHolmes\_55, TBond007\_52
- Track 2 : Pharb\_51
- Track 3 : Keshu\_56
- Track 4 : Lea83\_55
- Track 5 : TripleTrouble\_51
- Track 6 : Bryler\_55, Cain\_55, Phrank\_55
- Track 7 : PhelpsODU\_54, Unicorn\_54
- Track 8 : Applecrisp\_54, Ellie\_50
- Track 9 : Ekdilam\_51
- Track 10 : Syra333\_57
- Track 11 : Krueger\_58
- Track 12 : Tierra\_55
- Track 13 : November\_54

### ***Summary of Final Annotations (See graph section above for start numbers):***

The start number called the most often in the published annotations is 22, it was called in 10 of the 17 non-draft genes in the pham.

Genes that call this "Most Annotated" start:

- Applecrisp\_54, Bryler\_55, Cain\_55, Ekdilam\_51, Ellie\_50, Krueger\_58, November\_54, PhelpsODU\_54, Phrank\_55, Syra333\_57, Tierra\_55, Unicorn\_54,

Genes that have the "Most Annotated" start but do not call it:

- 

Genes that do not have the "Most Annotated" start:

- Hurricane\_54, Keshu\_56, Lea83\_55, Pharb\_51, Pixie\_53, ShedlockHolmes\_55, TBond007\_52, TripleTrouble\_51,

### **Summary by start number:**

Start 5:

- Found in 8 of 20 ( 40.0% ) of genes in pham

- Manual Annotations of this start: 7 of 17
- Called 87.5% of time when present
- Phage (with cluster) where this start called: Hurricane\_54 (K3), Keshu\_56 (K3), Pharb\_51 (K3), Pixie\_53 (K3), ShedlockHolmes\_55 (K3), TBond007\_52 (K3), TripleTrouble\_51 (K3),

Start 6:

- Found in 7 of 20 ( 35.0% ) of genes in pham
- No Manual Annotations of this start.
- Called 14.3% of time when present
- Phage (with cluster) where this start called: Lea83\_55 (K3),

Start 22:

- Found in 12 of 20 ( 60.0% ) of genes in pham
- Manual Annotations of this start: 10 of 17
- Called 100.0% of time when present
- Phage (with cluster) where this start called: Applecrisp\_54 (K6), Bryler\_55 (K6), Cain\_55 (K6), Ekdilam\_51 (K6), Ellie\_50 (K6), Krueger\_58 (K6), November\_54 (K6), PhelpsODU\_54 (K6), Phrank\_55 (K6), Syra333\_57 (K6), Tierra\_55 (K6), Unicorn\_54 (K6),

### Summary by clusters:

There are 2 clusters represented in this pham: K3, K6,

Info for manual annotations of cluster K3:

- Start number 5 was manually annotated 7 times for cluster K3.

Info for manual annotations of cluster K6:

- Start number 22 was manually annotated 10 times for cluster K6.

### Gene Information:

Gene: Applecrisp\_54 Start: 38300, Stop: 39112, Start Num: 22

Candidate Starts for Applecrisp\_54:

(Start: 22 @38300 has 10 MA's), (25, 38315), (28, 38348), (30, 38369), (51, 38447), (62, 38540), (77, 38687), (81, 38711), (92, 38807), (93, 38828), (96, 38858), (97, 38861), (98, 38945), (99, 38978),

Gene: Bryler\_55 Start: 37408, Stop: 38334, Start Num: 22

Candidate Starts for Bryler\_55:

(17, 37285), (19, 37303), (Start: 22 @37408 has 10 MA's), (27, 37441), (28, 37465), (30, 37486), (31, 37498), (32, 37510), (34, 37531), (46, 37588), (49, 37594), (54, 37642), (58, 37684), (66, 37810), (68, 37816), (73, 37858), (76, 37876), (77, 37885), (82, 37918), (86, 37966), (90, 37996), (96, 38062), (97, 38065), (98, 38149), (99, 38182), (100, 38236),

Gene: Cain\_55 Start: 37396, Stop: 38322, Start Num: 22

Candidate Starts for Cain\_55:

(17, 37273), (19, 37291), (Start: 22 @37396 has 10 MA's), (27, 37429), (28, 37453), (30, 37474), (31, 37486), (32, 37498), (34, 37519), (46, 37576), (49, 37582), (54, 37630), (58, 37672), (66, 37798), (68, 37804), (73, 37846), (76, 37864), (77, 37873), (82, 37906), (86, 37954), (90, 37984), (96, 38050), (97, 38053), (98, 38137), (99, 38170), (100, 38224),

Gene: Ekdilam\_51 Start: 38242, Stop: 39063, Start Num: 22

Candidate Starts for Ekdilam\_51:

(Start: 22 @38242 has 10 MA's), (25, 38254), (28, 38287), (30, 38308), (50, 38380), (52, 38395), (56, 38425), (63, 38527), (67, 38584), (71, 38605), (84, 38722), (91, 38764), (96, 38824), (97, 38827), (98, 38911), (99, 38944), (100, 38998),

Gene: Ellie\_50 Start: 37992, Stop: 38804, Start Num: 22

Candidate Starts for Ellie\_50:

(Start: 22 @37992 has 10 MA's), (25, 38007), (28, 38040), (30, 38061), (51, 38139), (62, 38232), (77, 38379), (81, 38403), (92, 38499), (93, 38520), (96, 38550), (97, 38553), (98, 38637), (99, 38670),

Gene: Hurricane\_54 Start: 38185, Stop: 39534, Start Num: 5

Candidate Starts for Hurricane\_54:

(2, 38074), (3, 38110), (4, 38119), (Start: 5 @38185 has 7 MA's), (6, 38206), (7, 38218), (8, 38242), (9, 38263), (12, 38302), (18, 38449), (21, 38506), (23, 38548), (37, 38689), (41, 38713), (42, 38728), (53, 38806), (57, 38851), (58, 38863), (60, 38869), (72, 39022), (83, 39094), (89, 39160), (98, 39391), (99, 39424),

Gene: Keshu\_56 Start: 38252, Stop: 39637, Start Num: 5

Candidate Starts for Keshu\_56:

(2, 38141), (3, 38177), (4, 38186), (Start: 5 @38252 has 7 MA's), (6, 38273), (7, 38285), (8, 38309), (9, 38330), (12, 38369), (16, 38447), (21, 38534), (23, 38576), (37, 38717), (41, 38741), (42, 38756), (47, 38792), (50, 38816), (53, 38834), (57, 38879), (58, 38891), (60, 38897), (62, 38942), (64, 38996), (88, 39206), (95, 39365), (98, 39470), (99, 39503),

Gene: Krueger\_58 Start: 38393, Stop: 39313, Start Num: 22

Candidate Starts for Krueger\_58:

(Start: 22 @38393 has 10 MA's), (24, 38405), (27, 38420), (28, 38444), (30, 38465), (36, 38531), (54, 38576), (62, 38669), (65, 38747), (70, 38765), (74, 38819), (78, 38861), (86, 38945), (90, 38975), (96, 39041), (97, 39044), (98, 39128), (99, 39161), (100, 39215),

Gene: Lea83\_55 Start: 38259, Stop: 39587, Start Num: 6

Candidate Starts for Lea83\_55:

(2, 38127), (3, 38163), (4, 38172), (Start: 5 @38238 has 7 MA's), (6, 38259), (7, 38271), (8, 38295), (9, 38316), (12, 38355), (18, 38502), (21, 38559), (23, 38601), (37, 38742), (41, 38766), (42, 38781), (53, 38859), (57, 38904), (58, 38916), (60, 38922), (72, 39075), (83, 39147), (89, 39213), (98, 39444), (99, 39477),

Gene: November\_54 Start: 38446, Stop: 39297, Start Num: 22

Candidate Starts for November\_54:

(19, 38335), (Start: 22 @38446 has 10 MA's), (25, 38461), (28, 38494), (30, 38515), (35, 38563), (55, 38635), (59, 38671), (62, 38716), (79, 38866), (85, 38944), (87, 38956), (92, 39007), (96, 39058), (97, 39061), (98, 39145), (99, 39178), (100, 39232),

Gene: Pharb\_51 Start: 36939, Stop: 38099, Start Num: 5

Candidate Starts for Pharb\_51:

(2, 36828), (3, 36864), (4, 36873), (Start: 5 @36939 has 7 MA's), (6, 36960), (7, 36972), (8, 36996), (9, 37017), (11, 37041), (13, 37062), (15, 37119), (26, 37164), (29, 37206), (37, 37278), (41, 37302), (42, 37317), (57, 37446), (58, 37455), (60, 37461), (61, 37473), (62, 37506), (69, 37581), (75, 37620), (98, 37932), (99, 37965),

Gene: PhelpsODU\_54 Start: 37429, Stop: 38442, Start Num: 22

Candidate Starts for PhelpsODU\_54:

(Start: 22 @37429 has 10 MA's), (27, 37459), (28, 37483), (30, 37504), (31, 37516), (32, 37528), (33, 37543), (34, 37549), (46, 37621), (58, 37723), (62, 37774), (66, 37849), (68, 37855), (71, 37873), (73, 37897), (76, 37915), (77, 37924), (82, 37957), (86, 38005), (90, 38032), (96, 38188), (97, 38191), (98, 38275), (99, 38308), (100, 38362),

Gene: Phrank\_55 Start: 37386, Stop: 38312, Start Num: 22

Candidate Starts for Phrank\_55:

(17, 37263), (19, 37281), (Start: 22 @37386 has 10 MA's), (27, 37419), (28, 37443), (30, 37464), (31, 37476), (32, 37488), (34, 37509), (46, 37566), (49, 37572), (54, 37620), (58, 37662), (66, 37788), (68, 37794), (73, 37836), (76, 37854), (77, 37863), (82, 37896), (86, 37944), (90, 37974), (96, 38040), (97, 38043), (98, 38127), (99, 38160), (100, 38214),

Gene: Pixie\_53 Start: 37717, Stop: 39072, Start Num: 5

Candidate Starts for Pixie\_53:

(2, 37606), (3, 37642), (4, 37651), (Start: 5 @37717 has 7 MA's), (6, 37738), (7, 37750), (8, 37774), (9, 37795), (12, 37834), (18, 37981), (21, 38038), (23, 38080), (37, 38221), (41, 38245), (42, 38260), (53, 38344), (57, 38389), (58, 38401), (60, 38407), (72, 38560), (83, 38632), (89, 38698), (98, 38929), (99, 38962),

Gene: ShedlockHolmes\_55 Start: 38242, Stop: 39591, Start Num: 5

Candidate Starts for ShedlockHolmes\_55:

(2, 38131), (3, 38167), (4, 38176), (Start: 5 @38242 has 7 MA's), (6, 38263), (7, 38275), (8, 38299), (9, 38320), (12, 38359), (18, 38506), (21, 38563), (23, 38605), (37, 38746), (41, 38770), (42, 38785), (53, 38863), (57, 38908), (58, 38920), (60, 38926), (72, 39079), (83, 39151), (89, 39217), (98, 39448), (99, 39481),

Gene: Syra333\_57 Start: 38303, Stop: 39322, Start Num: 22

Candidate Starts for Syra333\_57:

(17, 38186), (Start: 22 @38303 has 10 MA's), (24, 38315), (27, 38330), (28, 38354), (30, 38375), (36, 38441), (39, 38462), (40, 38465), (43, 38489), (54, 38585), (62, 38678), (70, 38774), (74, 38828), (78, 38870), (86, 38954), (90, 38984), (96, 39050), (97, 39053), (98, 39137), (99, 39170), (100, 39224),

Gene: TBond007\_52 Start: 37716, Stop: 39071, Start Num: 5

Candidate Starts for TBond007\_52:

(2, 37605), (3, 37641), (4, 37650), (Start: 5 @37716 has 7 MA's), (6, 37737), (7, 37749), (8, 37773), (9, 37794), (12, 37833), (18, 37980), (21, 38037), (23, 38079), (37, 38220), (41, 38244), (42, 38259), (53, 38343), (57, 38388), (58, 38400), (60, 38406), (72, 38559), (83, 38631), (89, 38697), (98, 38928), (99, 38961),

Gene: Tierra\_55 Start: 38197, Stop: 39123, Start Num: 22

Candidate Starts for Tierra\_55:

(19, 38092), (Start: 22 @38197 has 10 MA's), (27, 38230), (28, 38254), (30, 38275), (31, 38287), (32, 38299), (34, 38320), (46, 38377), (49, 38383), (54, 38431), (58, 38473), (66, 38599), (68, 38605), (73, 38647), (76, 38665), (77, 38674), (82, 38707), (86, 38755), (90, 38785), (96, 38851), (97, 38854), (98, 38938), (99, 38971), (100, 39025),

Gene: TribelTrouble\_51 Start: 37598, Stop: 38950, Start Num: 5

Candidate Starts for TribelTrouble\_51:

(1, 37460), (2, 37487), (3, 37523), (4, 37532), (Start: 5 @37598 has 7 MA's), (7, 37631), (8, 37655), (10, 37688), (13, 37721), (14, 37754), (20, 37877), (21, 37946), (26, 38015), (29, 38057), (38, 38126), (41, 38141), (42, 38156), (44, 38162), (45, 38174), (47, 38192), (48, 38198), (57, 38285), (58, 38297), (60, 38303), (80, 38492), (83, 38525), (94, 38657), (96, 38693), (98, 38783), (99, 38816),

Gene: Unicorn\_54 Start: 37429, Stop: 38442, Start Num: 22

Candidate Starts for Unicorn\_54:

(Start: 22 @37429 has 10 MA's), (27, 37459), (28, 37483), (30, 37504), (31, 37516), (32, 37528), (33, 37543), (34, 37549), (46, 37621), (58, 37723), (62, 37774), (66, 37849), (68, 37855), (71, 37873), (73, 37897), (76, 37915), (77, 37924), (82, 37957), (86, 38005), (90, 38032), (96, 38188), (97, 38191), (98, 38275), (99, 38308), (100, 38362),