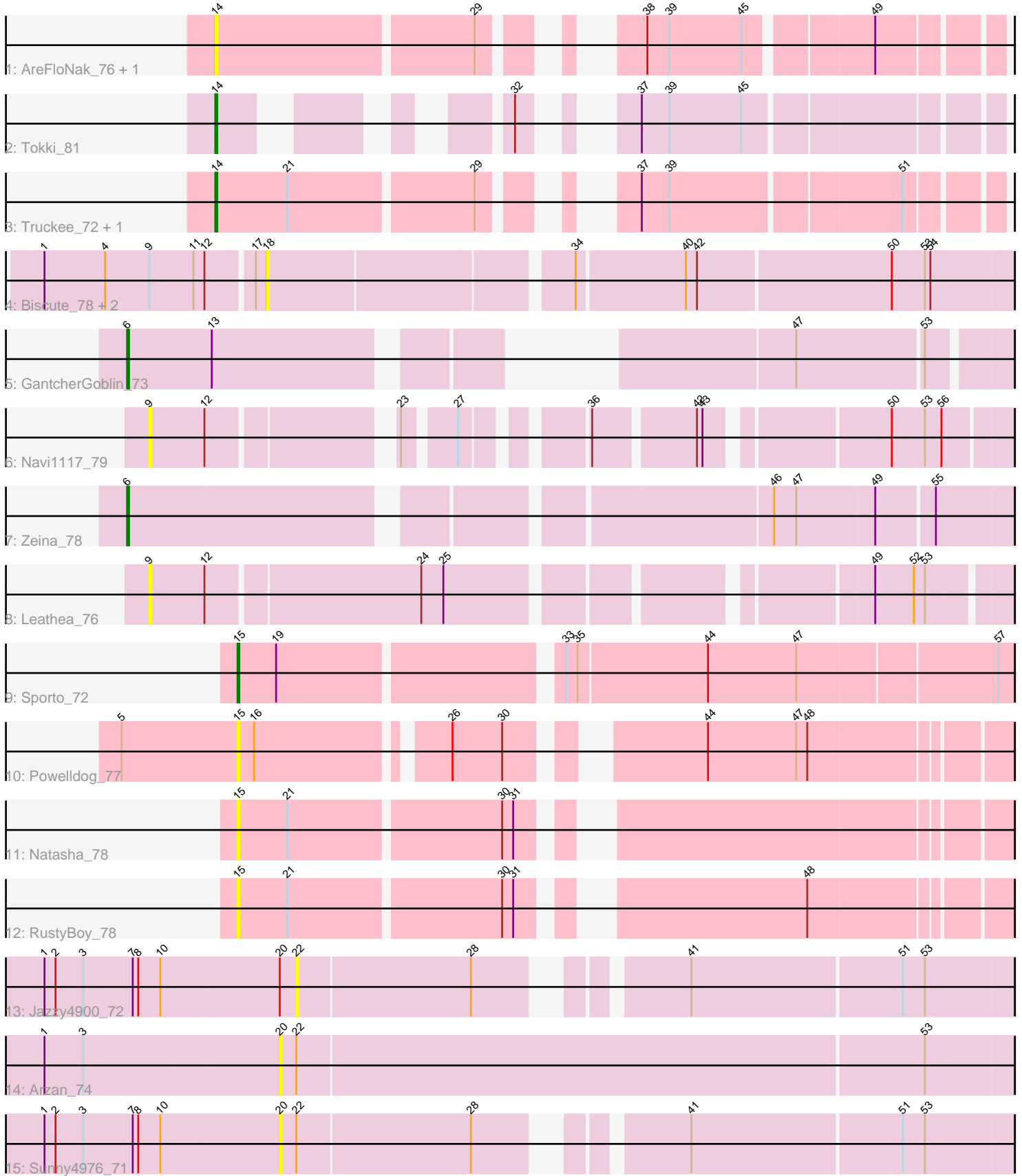


Pham 224918



Note: Tracks are now grouped by subcluster and scaled. Switching in subcluster is indicated by changes in track color. Track scale is now set by default to display the region 30 bp upstream of start 1 to 30 bp downstream of the last possible start. If this default region is judged to be packed too tightly with annotated starts, the track will be further scaled to only show that region of the ORF with annotated starts. This action will be indicated by adding "Zoomed" to the title. For starts, yellow indicates the location of called starts comprised solely of Glimmer/GeneMark auto-annotations, green indicates the location of called starts with at least 1 manual gene annotation.

Pham 224918 Report

This analysis was run 03/28/25 on database version 593.

Pham number 224918 has 19 members, 13 are drafts.

Phages represented in each track:

- Track 1 : AreFloNak_76, Nivinsha_73
- Track 2 : Tokki_81
- Track 3 : Truckee_72, Makai_74
- Track 4 : Biscute_78, Kinny_79, BarbieDoll_79
- Track 5 : GantcherGoblin_73
- Track 6 : Navi1117_79
- Track 7 : Zeina_78
- Track 8 : Leathea_76
- Track 9 : Sporto_72
- Track 10 : PowellDog_77
- Track 11 : Natasha_78
- Track 12 : RustyBoy_78
- Track 13 : Jazzy4900_72
- Track 14 : Arzan_74
- Track 15 : Sunny4976_71

Summary of Final Annotations (See graph section above for start numbers):

The start number called the most often in the published annotations is 14, it was called in 3 of the 6 non-draft genes in the pham.

Genes that call this "Most Annotated" start:

- AreFloNak_76, Makai_74, Nivinsha_73, Tokki_81, Truckee_72,

Genes that have the "Most Annotated" start but do not call it:

-

Genes that do not have the "Most Annotated" start:

- Arzan_74, BarbieDoll_79, Biscute_78, GantcherGoblin_73, Jazzy4900_72, Kinny_79, Leathea_76, Natasha_78, Navi1117_79, PowellDog_77, RustyBoy_78, Sporto_72, Sunny4976_71, Zeina_78,

Summary by start number:

Start 6:

- Found in 2 of 19 (10.5%) of genes in pham
- Manual Annotations of this start: 2 of 6
- Called 100.0% of time when present
- Phage (with cluster) where this start called: GantcherGoblin_73 (AU6), Zeina_78 (AU6),

Start 9:

- Found in 5 of 19 (26.3%) of genes in pham
- No Manual Annotations of this start.
- Called 40.0% of time when present
- Phage (with cluster) where this start called: Leathea_76 (AU6), Navi1117_79 (AU6),

Start 14:

- Found in 5 of 19 (26.3%) of genes in pham
- Manual Annotations of this start: 3 of 6
- Called 100.0% of time when present
- Phage (with cluster) where this start called: AreFloNak_76 (AU1), Makai_74 (AU5), Nivinsha_73 (AU1), Tokki_81 (AU2), Truckee_72 (AU5),

Start 15:

- Found in 4 of 19 (21.1%) of genes in pham
- Manual Annotations of this start: 1 of 6
- Called 100.0% of time when present
- Phage (with cluster) where this start called: Natasha_78 (AW), PowellDog_77 (AW), RustyBoy_78 (AW), Sporto_72 (AW),

Start 18:

- Found in 3 of 19 (15.8%) of genes in pham
- No Manual Annotations of this start.
- Called 100.0% of time when present
- Phage (with cluster) where this start called: BarbieDoll_79 (AU6), Biscute_78 (AU6), Kinny_79 (AU6),

Start 20:

- Found in 3 of 19 (15.8%) of genes in pham
- No Manual Annotations of this start.
- Called 66.7% of time when present
- Phage (with cluster) where this start called: Arzan_74 (FI), Sunny4976_71 (FI),

Start 22:

- Found in 3 of 19 (15.8%) of genes in pham
- No Manual Annotations of this start.
- Called 33.3% of time when present
- Phage (with cluster) where this start called: Jazzy4900_72 (FI),

Summary by clusters:

There are 6 clusters represented in this pham: AU1, AU2, AU5, AW, AU6, FI,

Info for manual annotations of cluster AU2:

- Start number 14 was manually annotated 1 time for cluster AU2.

Info for manual annotations of cluster AU5:

- Start number 14 was manually annotated 2 times for cluster AU5.

Info for manual annotations of cluster AU6:

- Start number 6 was manually annotated 2 times for cluster AU6.

Info for manual annotations of cluster AW:

- Start number 15 was manually annotated 1 time for cluster AW.

Gene Information:

Gene: AreFloNak_76 Start: 47429, Stop: 47785, Start Num: 14

Candidate Starts for AreFloNak_76:

(Start: 14 @47429 has 3 MA's), (29, 47564), (38, 47612), (39, 47624), (45, 47663), (49, 47726),

Gene: Arzan_74 Start: 46947, Stop: 47339, Start Num: 20

Candidate Starts for Arzan_74:

(1, 46821), (3, 46842), (20, 46947), (22, 46956), (53, 47292),

Gene: BarbieDoll_79 Start: 46967, Stop: 47353, Start Num: 18

Candidate Starts for BarbieDoll_79:

(1, 46850), (4, 46883), (9, 46907), (11, 46931), (12, 46937), (17, 46961), (18, 46967), (34, 47123), (40, 47180), (42, 47186), (50, 47288), (53, 47306), (54, 47309),

Gene: Biscute_78 Start: 46619, Stop: 47005, Start Num: 18

Candidate Starts for Biscute_78:

(1, 46502), (4, 46535), (9, 46559), (11, 46583), (12, 46589), (17, 46613), (18, 46619), (34, 46775), (40, 46832), (42, 46838), (50, 46940), (53, 46958), (54, 46961),

Gene: GantcherGoblin_73 Start: 45315, Stop: 45701, Start Num: 6

Candidate Starts for GantcherGoblin_73:

(Start: 6 @45315 has 2 MA's), (13, 45360), (47, 45594), (53, 45660),

Gene: Jazzy4900_72 Start: 47820, Stop: 48170, Start Num: 22

Candidate Starts for Jazzy4900_72:

(1, 47685), (2, 47691), (3, 47706), (7, 47733), (8, 47736), (10, 47748), (20, 47811), (22, 47820), (28, 47913), (41, 48000), (51, 48111), (53, 48123),

Gene: Kinny_79 Start: 47446, Stop: 47832, Start Num: 18

Candidate Starts for Kinny_79:

(1, 47329), (4, 47362), (9, 47386), (11, 47410), (12, 47416), (17, 47440), (18, 47446), (34, 47602), (40, 47659), (42, 47665), (50, 47767), (53, 47785), (54, 47788),

Gene: Leathea_76 Start: 45220, Stop: 45642, Start Num: 9

Candidate Starts for Leathea_76:

(9, 45220), (12, 45250), (24, 45361), (25, 45373), (49, 45574), (52, 45595), (53, 45601),

Gene: Makai_74 Start: 47957, Stop: 48316, Start Num: 14

Candidate Starts for Makai_74:

(Start: 14 @47957 has 3 MA's), (21, 47996), (29, 48092), (37, 48137), (39, 48152), (51, 48272),

Gene: Natasha_78 Start: 46021, Stop: 46392, Start Num: 15

Candidate Starts for Natasha_78:

(Start: 15 @46021 has 1 MA's), (21, 46048), (30, 46159), (31, 46165),

Gene: Navi1117_79 Start: 46395, Stop: 46790, Start Num: 9

Candidate Starts for Navi1117_79:

(9, 46395), (12, 46425), (23, 46512), (27, 46536), (36, 46587), (42, 46638), (43, 46641), (50, 46728), (53, 46746), (56, 46755),

Gene: Nivinsha_73 Start: 47429, Stop: 47785, Start Num: 14

Candidate Starts for Nivinsha_73:

(Start: 14 @47429 has 3 MA's), (29, 47564), (38, 47612), (39, 47624), (45, 47663), (49, 47726),

Gene: Powelldog_77 Start: 46429, Stop: 46794, Start Num: 15

Candidate Starts for Powelldog_77:

(5, 46366), (Start: 15 @46429 has 1 MA's), (16, 46438), (26, 46531), (30, 46558), (44, 46639), (47, 46687), (48, 46693),

Gene: RustyBoy_78 Start: 46220, Stop: 46591, Start Num: 15

Candidate Starts for RustyBoy_78:

(Start: 15 @46220 has 1 MA's), (21, 46247), (30, 46358), (31, 46364), (48, 46490),

Gene: Sporto_72 Start: 46794, Stop: 47192, Start Num: 15

Candidate Starts for Sporto_72:

(Start: 15 @46794 has 1 MA's), (19, 46815), (33, 46956), (35, 46962), (44, 47031), (47, 47079), (57, 47184),

Gene: Sunny4976_71 Start: 47811, Stop: 48170, Start Num: 20

Candidate Starts for Sunny4976_71:

(1, 47685), (2, 47691), (3, 47706), (7, 47733), (8, 47736), (10, 47748), (20, 47811), (22, 47820), (28, 47913), (41, 48000), (51, 48111), (53, 48123),

Gene: Tokki_81 Start: 48071, Stop: 48379, Start Num: 14

Candidate Starts for Tokki_81:

(Start: 14 @48071 has 3 MA's), (32, 48170), (37, 48200), (39, 48215), (45, 48254),

Gene: Truckee_72 Start: 47742, Stop: 48101, Start Num: 14

Candidate Starts for Truckee_72:

(Start: 14 @47742 has 3 MA's), (21, 47781), (29, 47877), (37, 47922), (39, 47937), (51, 48057),

Gene: Zeina_78 Start: 46274, Stop: 46717, Start Num: 6

Candidate Starts for Zeina_78:

(Start: 6 @46274 has 2 MA's), (46, 46592), (47, 46604), (49, 46646), (55, 46676),