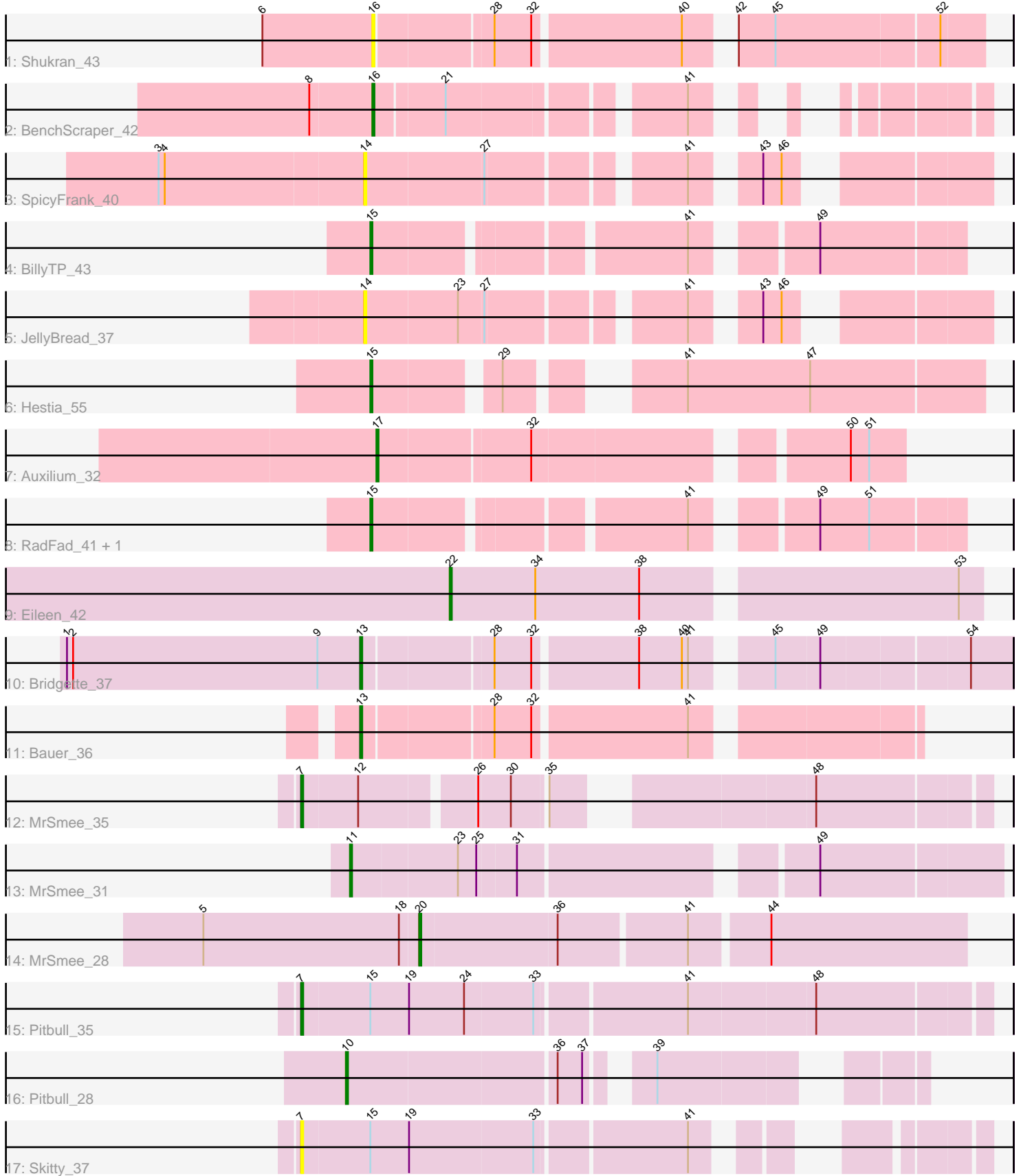


Pham 224932



Note: Tracks are now grouped by subcluster and scaled. Switching in subcluster is indicated by changes in track color. Track scale is now set by default to display the region 30 bp upstream of start 1 to 30 bp downstream of the last possible start. If this default region is judged to be packed too tightly with annotated starts, the track will be further scaled to only show that region of the ORF with annotated starts. This action will be indicated by adding "Zoomed" to the title. For starts, yellow indicates the location of called starts comprised solely of Glimmer/GeneMark auto-annotations, green indicates the location of called starts with at least 1 manual gene annotation.

## Pham 224932 Report

This analysis was run 03/28/25 on database version 593.

Pham number 224932 has 18 members, 5 are drafts.

Phages represented in each track:

- Track 1 : Shukran\_43
- Track 2 : BenchScraper\_42
- Track 3 : SpicyFrank\_40
- Track 4 : BillyTP\_43
- Track 5 : JellyBread\_37
- Track 6 : Hestia\_55
- Track 7 : Auxilium\_32
- Track 8 : RadFad\_41, Hillester\_41
- Track 9 : Eileen\_42
- Track 10 : Bridgette\_37
- Track 11 : Bauer\_36
- Track 12 : MrSmee\_35
- Track 13 : MrSmee\_31
- Track 14 : MrSmee\_28
- Track 15 : Pitbull\_35
- Track 16 : Pitbull\_28
- Track 17 : Skitty\_37

### ***Summary of Final Annotations (See graph section above for start numbers):***

The start number called the most often in the published annotations is 15, it was called in 3 of the 13 non-draft genes in the pham.

Genes that call this "Most Annotated" start:

- BillyTP\_43, Hestia\_55, Hillester\_41, RadFad\_41,

Genes that have the "Most Annotated" start but do not call it:

- Pitbull\_35, Skitty\_37,

Genes that do not have the "Most Annotated" start:

- Auxilium\_32, Bauer\_36, BenchScraper\_42, Bridgette\_37, Eileen\_42, JellyBread\_37, MrSmee\_28, MrSmee\_31, MrSmee\_35, Pitbull\_28, Shukran\_43, SpicyFrank\_40,

### **Summary by start number:**

Start 7:

- Found in 3 of 18 ( 16.7% ) of genes in pham
- Manual Annotations of this start: 2 of 13
- Called 100.0% of time when present
- Phage (with cluster) where this start called: MrSmee\_35 (FQ), Pitbull\_35 (FQ), Skitty\_37 (FQ),

Start 10:

- Found in 1 of 18 ( 5.6% ) of genes in pham
- Manual Annotations of this start: 1 of 13
- Called 100.0% of time when present
- Phage (with cluster) where this start called: Pitbull\_28 (FQ),

Start 11:

- Found in 1 of 18 ( 5.6% ) of genes in pham
- Manual Annotations of this start: 1 of 13
- Called 100.0% of time when present
- Phage (with cluster) where this start called: MrSmee\_31 (FQ),

Start 13:

- Found in 2 of 18 ( 11.1% ) of genes in pham
- Manual Annotations of this start: 2 of 13
- Called 100.0% of time when present
- Phage (with cluster) where this start called: Bauer\_36 (FN), Bridgette\_37 (FA),

Start 14:

- Found in 2 of 18 ( 11.1% ) of genes in pham
- No Manual Annotations of this start.
- Called 100.0% of time when present
- Phage (with cluster) where this start called: JellyBread\_37 (AY), SpicyFrank\_40 (AY),

Start 15:

- Found in 6 of 18 ( 33.3% ) of genes in pham
- Manual Annotations of this start: 3 of 13
- Called 66.7% of time when present
- Phage (with cluster) where this start called: BillyTP\_43 (AY), Hestia\_55 (AY), Hillester\_41 (AY), RadFad\_41 (AY),

Start 16:

- Found in 2 of 18 ( 11.1% ) of genes in pham
- Manual Annotations of this start: 1 of 13
- Called 100.0% of time when present
- Phage (with cluster) where this start called: BenchScraper\_42 (AY), Shukran\_43 (AY),

Start 17:

- Found in 1 of 18 ( 5.6% ) of genes in pham
- Manual Annotations of this start: 1 of 13
- Called 100.0% of time when present
- Phage (with cluster) where this start called: Auxilium\_32 (AY),

Start 20:

- Found in 1 of 18 ( 5.6% ) of genes in pham
- Manual Annotations of this start: 1 of 13
- Called 100.0% of time when present
- Phage (with cluster) where this start called: MrSmee\_28 (FQ),

Start 22:

- Found in 1 of 18 ( 5.6% ) of genes in pham
- Manual Annotations of this start: 1 of 13
- Called 100.0% of time when present
- Phage (with cluster) where this start called: Eileen\_42 (FA),

**Summary by clusters:**

There are 4 clusters represented in this pham: AY, FQ, FN, FA,

Info for manual annotations of cluster AY:

- Start number 15 was manually annotated 3 times for cluster AY.
- Start number 16 was manually annotated 1 time for cluster AY.
- Start number 17 was manually annotated 1 time for cluster AY.

Info for manual annotations of cluster FA:

- Start number 13 was manually annotated 1 time for cluster FA.
- Start number 22 was manually annotated 1 time for cluster FA.

Info for manual annotations of cluster FN:

- Start number 13 was manually annotated 1 time for cluster FN.

Info for manual annotations of cluster FQ:

- Start number 7 was manually annotated 2 times for cluster FQ.
- Start number 10 was manually annotated 1 time for cluster FQ.
- Start number 11 was manually annotated 1 time for cluster FQ.
- Start number 20 was manually annotated 1 time for cluster FQ.

**Gene Information:**

Gene: Auxilium\_32 Start: 21344, Stop: 21577, Start Num: 17

Candidate Starts for Auxilium\_32:

(Start: 17 @21344 has 1 MA's), (32, 21416), (50, 21551), (51, 21560),

Gene: Bauer\_36 Start: 26236, Stop: 26484, Start Num: 13

Candidate Starts for Bauer\_36:

(Start: 13 @26236 has 2 MA's), (28, 26296), (32, 26314), (41, 26386),

Gene: BenchScraper\_42 Start: 27914, Stop: 27690, Start Num: 16

Candidate Starts for BenchScraper\_42:

(8, 27944), (Start: 16 @27914 has 1 MA's), (21, 27881), (41, 27779),

Gene: BillyTP\_43 Start: 29327, Stop: 29073, Start Num: 15

Candidate Starts for BillyTP\_43:

(Start: 15 @29327 has 3 MA's), (41, 29189), (49, 29141),

Gene: Bridgette\_37 Start: 26378, Stop: 26668, Start Num: 13

Candidate Starts for Bridgette\_37:

(1, 26234), (2, 26237), (9, 26357), (Start: 13 @26378 has 2 MA's), (28, 26438), (32, 26456), (38, 26504), (40, 26525), (41, 26528), (45, 26558), (49, 26579), (54, 26648),

Gene: Eileen\_42 Start: 28759, Stop: 29007, Start Num: 22

Candidate Starts for Eileen\_42:

(Start: 22 @28759 has 1 MA's), (34, 28801), (38, 28852), (53, 28996),

Gene: Hestia\_55 Start: 31927, Stop: 32184, Start Num: 15

Candidate Starts for Hestia\_55:

(Start: 15 @31927 has 3 MA's), (29, 31981), (41, 32041), (47, 32101),

Gene: Hillester\_41 Start: 28078, Stop: 27824, Start Num: 15

Candidate Starts for Hillester\_41:

(Start: 15 @28078 has 3 MA's), (41, 27940), (49, 27892), (51, 27868),

Gene: JellyBread\_37 Start: 26498, Stop: 26244, Start Num: 14

Candidate Starts for JellyBread\_37:

(14, 26498), (23, 26453), (27, 26441), (41, 26357), (43, 26333), (46, 26324),

Gene: MrSmee\_35 Start: 26014, Stop: 25721, Start Num: 7

Candidate Starts for MrSmee\_35:

(Start: 7 @26014 has 2 MA's), (12, 25987), (26, 25936), (30, 25921), (35, 25906), (48, 25801),

Gene: MrSmee\_31 Start: 23680, Stop: 23387, Start Num: 11

Candidate Starts for MrSmee\_31:

(Start: 11 @23680 has 1 MA's), (23, 23629), (25, 23620), (31, 23602), (49, 23473),

Gene: MrSmee\_28 Start: 22939, Stop: 22682, Start Num: 20

Candidate Starts for MrSmee\_28:

(5, 23044), (18, 22948), (Start: 20 @22939 has 1 MA's), (36, 22873), (41, 22813), (44, 22777),

Gene: Pitbull\_35 Start: 25095, Stop: 24775, Start Num: 7

Candidate Starts for Pitbull\_35:

(Start: 7 @25095 has 2 MA's), (Start: 15 @25062 has 3 MA's), (19, 25044), (24, 25017), (33, 24984), (41, 24915), (48, 24855),

Gene: Pitbull\_28 Start: 22251, Stop: 22015, Start Num: 10

Candidate Starts for Pitbull\_28:

(Start: 10 @22251 has 1 MA's), (36, 22152), (37, 22140), (39, 22119),

Gene: RadFad\_41 Start: 28078, Stop: 27824, Start Num: 15

Candidate Starts for RadFad\_41:

(Start: 15 @28078 has 3 MA's), (41, 27940), (49, 27892), (51, 27868),

Gene: Shukran\_43 Start: 28688, Stop: 28416, Start Num: 16

Candidate Starts for Shukran\_43:

(6, 28742), (Start: 16 @28688 has 1 MA's), (28, 28634), (32, 28616), (40, 28547), (42, 28532), (45, 28514), (52, 28436),

Gene: Skitty\_37 Start: 24641, Stop: 24363, Start Num: 7

Candidate Starts for Skitty\_37:

(Start: 7 @24641 has 2 MA's), (Start: 15 @24608 has 3 MA's), (19, 24590), (33, 24530), (41, 24461),

Gene: SpicyFrank\_40 Start: 27728, Stop: 27474, Start Num: 14

Candidate Starts for SpicyFrank\_40:

(3, 27827), (4, 27824), (14, 27728), (27, 27671), (41, 27587), (43, 27563), (46, 27554),