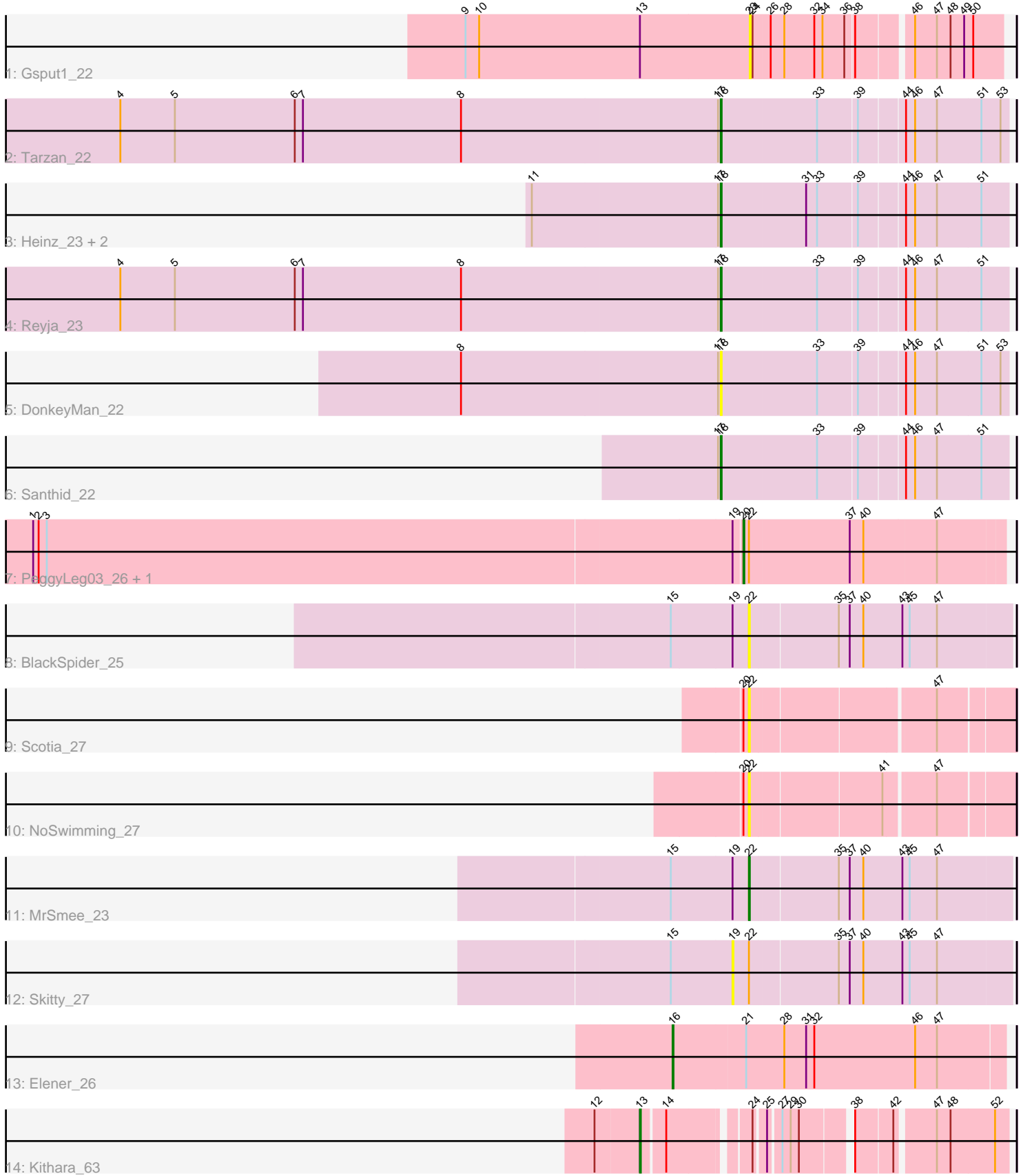


# Pham 224950



Note: Tracks are now grouped by subcluster and scaled. Switching in subcluster is indicated by changes in track color. Track scale is now set by default to display the region 30 bp upstream of start 1 to 30 bp downstream of the last possible start. If this default region is judged to be packed too tightly with annotated starts, the track will be further scaled to only show that region of the ORF with annotated starts. This action will be indicated by adding "Zoomed" to the title. For starts, yellow indicates the location of called starts comprised solely of Glimmer/GeneMark auto-annotations, green indicates the location of called starts with at least 1 manual gene annotation.

## Pham 224950 Report

This analysis was run 03/28/25 on database version 593.

Pham number 224950 has 17 members, 7 are drafts.

Phages represented in each track:

- Track 1 : Gsput1\_22
- Track 2 : Tarzan\_22
- Track 3 : Heinz\_23, Jojo24\_22, Hibiscus\_22
- Track 4 : Reyja\_23
- Track 5 : DonkeyMan\_22
- Track 6 : Santhid\_22
- Track 7 : PeggyLeg03\_26, Constance\_26
- Track 8 : BlackSpider\_25
- Track 9 : Scotia\_27
- Track 10 : NoSwimming\_27
- Track 11 : MrSmee\_23
- Track 12 : Skitty\_27
- Track 13 : Elener\_26
- Track 14 : Kithara\_63

### ***Summary of Final Annotations (See graph section above for start numbers):***

The start number called the most often in the published annotations is 18, it was called in 5 of the 10 non-draft genes in the pham.

Genes that call this "Most Annotated" start:

- DonkeyMan\_22, Heinz\_23, Hibiscus\_22, Jojo24\_22, Reyja\_23, Santhid\_22, Tarzan\_22,

Genes that have the "Most Annotated" start but do not call it:

- 

Genes that do not have the "Most Annotated" start:

- BlackSpider\_25, Constance\_26, Elener\_26, Gsput1\_22, Kithara\_63, MrSmee\_23, NoSwimming\_27, PeggyLeg03\_26, Scotia\_27, Skitty\_27,

### **Summary by start number:**

Start 13:

- Found in 2 of 17 ( 11.8% ) of genes in pham
- Manual Annotations of this start: 1 of 10
- Called 50.0% of time when present
- Phage (with cluster) where this start called: Kithara\_63 (singleton),

Start 16:

- Found in 1 of 17 ( 5.9% ) of genes in pham
- Manual Annotations of this start: 1 of 10
- Called 100.0% of time when present
- Phage (with cluster) where this start called: Elener\_26 (singleton),

Start 18:

- Found in 7 of 17 ( 41.2% ) of genes in pham
- Manual Annotations of this start: 5 of 10
- Called 100.0% of time when present
- Phage (with cluster) where this start called: DonkeyMan\_22 (DY), Heinz\_23 (DY), Hibiscus\_22 (DY), Jojo24\_22 (DY), Reyja\_23 (DY), Santhid\_22 (DY), Tarzan\_22 (DY),

Start 19:

- Found in 5 of 17 ( 29.4% ) of genes in pham
- No Manual Annotations of this start.
- Called 20.0% of time when present
- Phage (with cluster) where this start called: Skitty\_27 (FQ),

Start 20:

- Found in 4 of 17 ( 23.5% ) of genes in pham
- Manual Annotations of this start: 2 of 10
- Called 50.0% of time when present
- Phage (with cluster) where this start called: Constance\_26 (FA), PeggyLeg03\_26 (FA),

Start 22:

- Found in 7 of 17 ( 41.2% ) of genes in pham
- Manual Annotations of this start: 1 of 10
- Called 57.1% of time when present
- Phage (with cluster) where this start called: BlackSpider\_25 (FN), MrSmee\_23 (FQ), NoSwimming\_27 (FO), Scotia\_27 (FO),

Start 23:

- Found in 1 of 17 ( 5.9% ) of genes in pham
- No Manual Annotations of this start.
- Called 100.0% of time when present
- Phage (with cluster) where this start called: Gsput1\_22 (CU2),

**Summary by clusters:**

There are 7 clusters represented in this pham: FQ, singleton, CU2, FA, DY, FN, FO,

Info for manual annotations of cluster DY:

- Start number 18 was manually annotated 5 times for cluster DY.

Info for manual annotations of cluster FA:

- Start number 20 was manually annotated 2 times for cluster FA.

Info for manual annotations of cluster FQ:

- Start number 22 was manually annotated 1 time for cluster FQ.

### **Gene Information:**

Gene: BlackSpider\_25 Start: 20146, Stop: 20424, Start Num: 22

Candidate Starts for BlackSpider\_25:

(15, 20062), (19, 20128), (Start: 22 @20146 has 1 MA's), (35, 20239), (37, 20251), (40, 20266), (43, 20308), (45, 20314), (47, 20344),

Gene: Constance\_26 Start: 20763, Stop: 21041, Start Num: 20

Candidate Starts for Constance\_26:

(1, 19992), (2, 19998), (3, 20007), (19, 20754), (Start: 20 @20763 has 2 MA's), (Start: 22 @20769 has 1 MA's), (37, 20877), (40, 20892), (47, 20970),

Gene: DonkeyMan\_22 Start: 18572, Stop: 18871, Start Num: 18

Candidate Starts for DonkeyMan\_22:

(8, 18290), (17, 18569), (Start: 18 @18572 has 5 MA's), (33, 18674), (39, 18716), (44, 18761), (46, 18770), (47, 18794), (51, 18842), (53, 18863),

Gene: Elener\_26 Start: 21147, Stop: 21506, Start Num: 16

Candidate Starts for Elener\_26:

(Start: 16 @21147 has 1 MA's), (21, 21225), (28, 21267), (31, 21291), (32, 21300), (46, 21411), (47, 21435),

Gene: Gspu1\_22 Start: 18136, Stop: 18396, Start Num: 23

Candidate Starts for Gspu1\_22:

(9, 17824), (10, 17839), (Start: 13 @18016 has 1 MA's), (23, 18136), (24, 18139), (26, 18157), (28, 18172), (32, 18205), (34, 18214), (36, 18238), (38, 18247), (46, 18301), (47, 18325), (48, 18340), (49, 18355), (50, 18364),

Gene: Heinz\_23 Start: 18664, Stop: 18963, Start Num: 18

Candidate Starts for Heinz\_23:

(11, 18460), (17, 18661), (Start: 18 @18664 has 5 MA's), (31, 18754), (33, 18766), (39, 18808), (44, 18853), (46, 18862), (47, 18886), (51, 18934),

Gene: Hibiscus\_22 Start: 18612, Stop: 18911, Start Num: 18

Candidate Starts for Hibiscus\_22:

(11, 18408), (17, 18609), (Start: 18 @18612 has 5 MA's), (31, 18702), (33, 18714), (39, 18756), (44, 18801), (46, 18810), (47, 18834), (51, 18882),

Gene: Jojo24\_22 Start: 18609, Stop: 18908, Start Num: 18

Candidate Starts for Jojo24\_22:

(11, 18405), (17, 18606), (Start: 18 @18609 has 5 MA's), (31, 18699), (33, 18711), (39, 18753), (44, 18798), (46, 18807), (47, 18831), (51, 18879),

Gene: Kithara\_63 Start: 46188, Stop: 46532, Start Num: 13

Candidate Starts for Kithara\_63:

(12, 46140), (Start: 13 @46188 has 1 MA's), (14, 46212), (24, 46290), (25, 46299), (27, 46311), (29, 46320), (30, 46329), (38, 46377), (42, 46416), (47, 46455), (48, 46470), (52, 46518),

Gene: MrSmee\_23 Start: 18072, Stop: 18350, Start Num: 22

Candidate Starts for MrSmee\_23:

(15, 17988), (19, 18054), (Start: 22 @18072 has 1 MA's), (35, 18165), (37, 18177), (40, 18192), (43, 18234), (45, 18240), (47, 18270),

Gene: NoSwimming\_27 Start: 24549, Stop: 24818, Start Num: 22

Candidate Starts for NoSwimming\_27:

(Start: 20 @24543 has 2 MA's), (Start: 22 @24549 has 1 MA's), (41, 24687), (47, 24738),

Gene: PeggyLeg03\_26 Start: 20763, Stop: 21041, Start Num: 20

Candidate Starts for PeggyLeg03\_26:

(1, 19992), (2, 19998), (3, 20007), (19, 20754), (Start: 20 @20763 has 2 MA's), (Start: 22 @20769 has 1 MA's), (37, 20877), (40, 20892), (47, 20970),

Gene: Reyja\_23 Start: 18783, Stop: 19082, Start Num: 18

Candidate Starts for Reyja\_23:

(4, 18126), (5, 18186), (6, 18318), (7, 18327), (8, 18501), (17, 18780), (Start: 18 @18783 has 5 MA's), (33, 18885), (39, 18927), (44, 18972), (46, 18981), (47, 19005), (51, 19053),

Gene: Santhid\_22 Start: 18617, Stop: 18916, Start Num: 18

Candidate Starts for Santhid\_22:

(17, 18614), (Start: 18 @18617 has 5 MA's), (33, 18719), (39, 18761), (44, 18806), (46, 18815), (47, 18839), (51, 18887),

Gene: Scotia\_27 Start: 24552, Stop: 24821, Start Num: 22

Candidate Starts for Scotia\_27:

(Start: 20 @24546 has 2 MA's), (Start: 22 @24552 has 1 MA's), (47, 24741),

Gene: Skitty\_27 Start: 18054, Stop: 18350, Start Num: 19

Candidate Starts for Skitty\_27:

(15, 17988), (19, 18054), (Start: 22 @18072 has 1 MA's), (35, 18165), (37, 18177), (40, 18192), (43, 18234), (45, 18240), (47, 18270),

Gene: Tarzan\_22 Start: 18586, Stop: 18885, Start Num: 18

Candidate Starts for Tarzan\_22:

(4, 17929), (5, 17989), (6, 18121), (7, 18130), (8, 18304), (17, 18583), (Start: 18 @18586 has 5 MA's), (33, 18688), (39, 18730), (44, 18775), (46, 18784), (47, 18808), (51, 18856), (53, 18877),