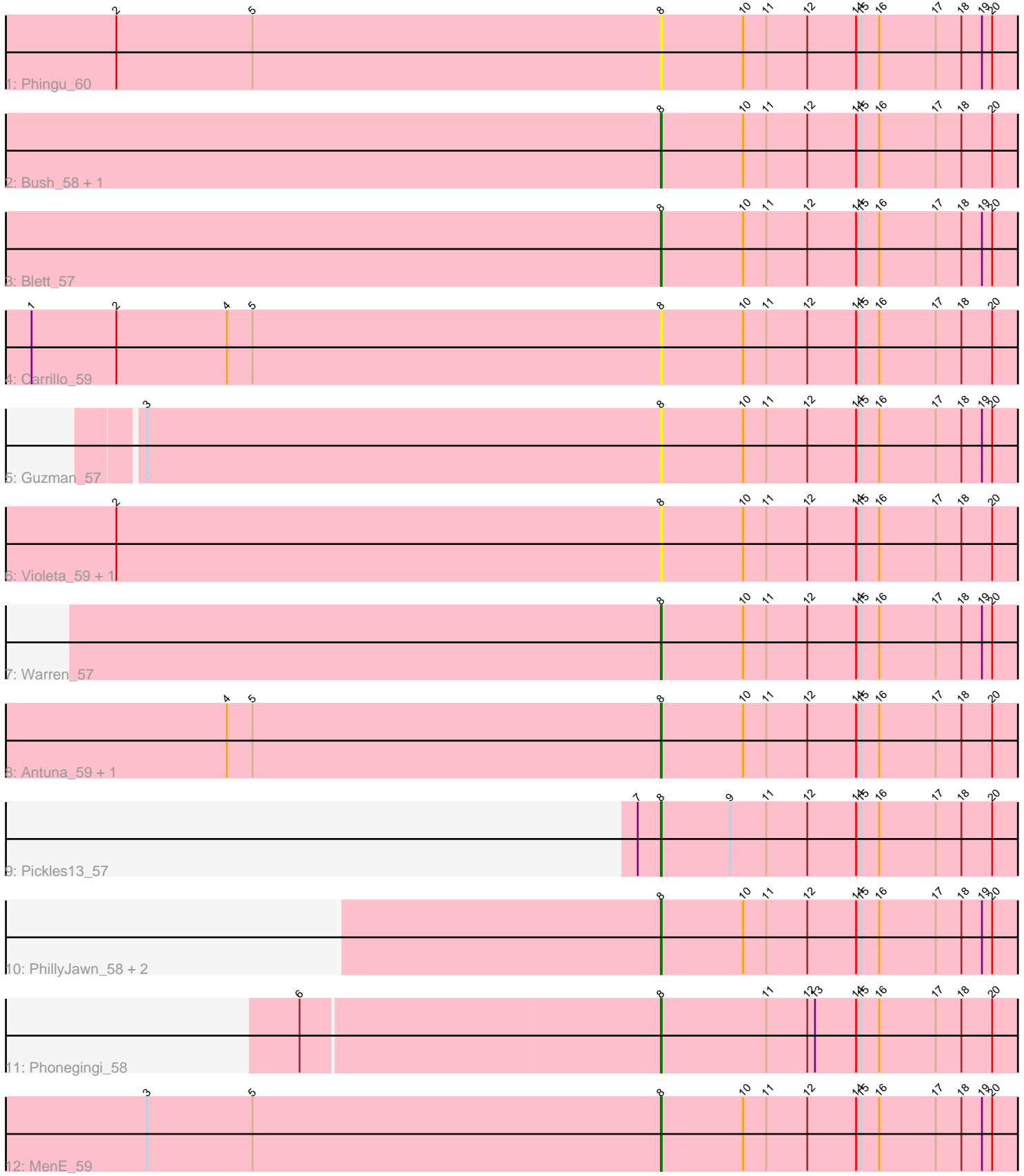


Pham 224958



Note: Tracks are now grouped by subcluster and scaled. Switching in subcluster is indicated by changes in track color. Track scale is now set by default to display the region 30 bp upstream of start 1 to 30 bp downstream of the last possible start. If this default region is judged to be packed too tightly with annotated starts, the track will be further scaled to only show that region of the ORF with annotated starts. This action will be indicated by adding "Zoomed" to the title. For starts, yellow indicates the location of called starts comprised solely of Glimmer/GeneMark auto-annotations, green indicates the location of called starts with at least 1 manual gene annotation.

Pham 224958 Report

This analysis was run 03/28/25 on database version 593.

Pham number 224958 has 17 members, 8 are drafts.

Phages represented in each track:

- Track 1 : Phingu_60
- Track 2 : Bush_58, CookieDog_57
- Track 3 : Blett_57
- Track 4 : Carrillo_59
- Track 5 : Guzman_57
- Track 6 : Violeta_59, Jakelyne_60
- Track 7 : Warren_57
- Track 8 : Antuna_59, Losacky_61
- Track 9 : Pickles13_57
- Track 10 : PhillyJawn_58, Appa_57, Dropshot_57
- Track 11 : Phonegingi_58
- Track 12 : MenE_59

Summary of Final Annotations (See graph section above for start numbers):

The start number called the most often in the published annotations is 8, it was called in 9 of the 9 non-draft genes in the pham.

Genes that call this "Most Annotated" start:

- Antuna_59, Appa_57, Blett_57, Bush_58, Carrillo_59, CookieDog_57, Dropshot_57, Guzman_57, Jakelyne_60, Losacky_61, MenE_59, PhillyJawn_58, Phingu_60, Phonegingi_58, Pickles13_57, Violeta_59, Warren_57,

Genes that have the "Most Annotated" start but do not call it:

-

Genes that do not have the "Most Annotated" start:

-

Summary by start number:

Start 8:

- Found in 17 of 17 (100.0%) of genes in pham
- Manual Annotations of this start: 9 of 9

- Called 100.0% of time when present
- Phage (with cluster) where this start called: Antuna_59 (GA), Appa_57 (GA), Blett_57 (GA), Bush_58 (GA), Carrillo_59 (GA), CookieDog_57 (GA), Dropshot_57 (GA), Guzman_57 (GA), Jakelyne_60 (GA), Losacky_61 (GA), MenE_59 (GA), PhillyJawn_58 (GA), Phingu_60 (GA), Phonegingi_58 (GA), Pickles13_57 (GA), Violeta_59 (GA), Warren_57 (GA),

Summary by clusters:

There is one cluster represented in this pham: GA

Info for manual annotations of cluster GA:

- Start number 8 was manually annotated 9 times for cluster GA.

Gene Information:

Gene: Antuna_59 Start: 34183, Stop: 34620, Start Num: 8

Candidate Starts for Antuna_59:

(4, 33676), (5, 33706), (Start: 8 @34183 has 9 MA's), (10, 34279), (11, 34306), (12, 34354), (14, 34411), (15, 34417), (16, 34438), (17, 34504), (18, 34534), (20, 34570),

Gene: Appa_57 Start: 33948, Stop: 34385, Start Num: 8

Candidate Starts for Appa_57:

(Start: 8 @33948 has 9 MA's), (10, 34044), (11, 34071), (12, 34119), (14, 34176), (15, 34182), (16, 34203), (17, 34269), (18, 34299), (19, 34323), (20, 34335),

Gene: Blett_57 Start: 34133, Stop: 34570, Start Num: 8

Candidate Starts for Blett_57:

(Start: 8 @34133 has 9 MA's), (10, 34229), (11, 34256), (12, 34304), (14, 34361), (15, 34367), (16, 34388), (17, 34454), (18, 34484), (19, 34508), (20, 34520),

Gene: Bush_58 Start: 34082, Stop: 34519, Start Num: 8

Candidate Starts for Bush_58:

(Start: 8 @34082 has 9 MA's), (10, 34178), (11, 34205), (12, 34253), (14, 34310), (15, 34316), (16, 34337), (17, 34403), (18, 34433), (20, 34469),

Gene: Carrillo_59 Start: 34056, Stop: 34493, Start Num: 8

Candidate Starts for Carrillo_59:

(1, 33321), (2, 33420), (4, 33549), (5, 33579), (Start: 8 @34056 has 9 MA's), (10, 34152), (11, 34179), (12, 34227), (14, 34284), (15, 34290), (16, 34311), (17, 34377), (18, 34407), (20, 34443),

Gene: CookieDog_57 Start: 34056, Stop: 34493, Start Num: 8

Candidate Starts for CookieDog_57:

(Start: 8 @34056 has 9 MA's), (10, 34152), (11, 34179), (12, 34227), (14, 34284), (15, 34290), (16, 34311), (17, 34377), (18, 34407), (20, 34443),

Gene: Dropshot_57 Start: 33783, Stop: 34220, Start Num: 8

Candidate Starts for Dropshot_57:

(Start: 8 @33783 has 9 MA's), (10, 33879), (11, 33906), (12, 33954), (14, 34011), (15, 34017), (16, 34038), (17, 34104), (18, 34134), (19, 34158), (20, 34170),

Gene: Guzman_57 Start: 34003, Stop: 34440, Start Num: 8

Candidate Starts for Guzman_57:

(3, 33403), (Start: 8 @34003 has 9 MA's), (10, 34099), (11, 34126), (12, 34174), (14, 34231), (15, 34237), (16, 34258), (17, 34324), (18, 34354), (19, 34378), (20, 34390),

Gene: Jakelyne_60 Start: 34149, Stop: 34586, Start Num: 8

Candidate Starts for Jakelyne_60:

(2, 33513), (Start: 8 @34149 has 9 MA's), (10, 34245), (11, 34272), (12, 34320), (14, 34377), (15, 34383), (16, 34404), (17, 34470), (18, 34500), (20, 34536),

Gene: Losacky_61 Start: 34314, Stop: 34751, Start Num: 8

Candidate Starts for Losacky_61:

(4, 33807), (5, 33837), (Start: 8 @34314 has 9 MA's), (10, 34410), (11, 34437), (12, 34485), (14, 34542), (15, 34548), (16, 34569), (17, 34635), (18, 34665), (20, 34701),

Gene: MenE_59 Start: 34205, Stop: 34642, Start Num: 8

Candidate Starts for MenE_59:

(3, 33605), (5, 33728), (Start: 8 @34205 has 9 MA's), (10, 34301), (11, 34328), (12, 34376), (14, 34433), (15, 34439), (16, 34460), (17, 34526), (18, 34556), (19, 34580), (20, 34592),

Gene: PhillyJawn_58 Start: 33945, Stop: 34382, Start Num: 8

Candidate Starts for PhillyJawn_58:

(Start: 8 @33945 has 9 MA's), (10, 34041), (11, 34068), (12, 34116), (14, 34173), (15, 34179), (16, 34200), (17, 34266), (18, 34296), (19, 34320), (20, 34332),

Gene: Phingu_60 Start: 34169, Stop: 34606, Start Num: 8

Candidate Starts for Phingu_60:

(2, 33533), (5, 33692), (Start: 8 @34169 has 9 MA's), (10, 34265), (11, 34292), (12, 34340), (14, 34397), (15, 34403), (16, 34424), (17, 34490), (18, 34520), (19, 34544), (20, 34556),

Gene: Phonegingi_58 Start: 34265, Stop: 34702, Start Num: 8

Candidate Starts for Phonegingi_58:

(6, 33854), (Start: 8 @34265 has 9 MA's), (11, 34388), (12, 34436), (13, 34445), (14, 34493), (15, 34499), (16, 34520), (17, 34586), (18, 34616), (20, 34652),

Gene: Pickles13_57 Start: 34624, Stop: 35061, Start Num: 8

Candidate Starts for Pickles13_57:

(7, 34597), (Start: 8 @34624 has 9 MA's), (9, 34705), (11, 34747), (12, 34795), (14, 34852), (15, 34858), (16, 34879), (17, 34945), (18, 34975), (20, 35011),

Gene: Violeta_59 Start: 34047, Stop: 34484, Start Num: 8

Candidate Starts for Violeta_59:

(2, 33411), (Start: 8 @34047 has 9 MA's), (10, 34143), (11, 34170), (12, 34218), (14, 34275), (15, 34281), (16, 34302), (17, 34368), (18, 34398), (20, 34434),

Gene: Warren_57 Start: 34005, Stop: 34442, Start Num: 8

Candidate Starts for Warren_57:

(Start: 8 @34005 has 9 MA's), (10, 34101), (11, 34128), (12, 34176), (14, 34233), (15, 34239), (16, 34260), (17, 34326), (18, 34356), (19, 34380), (20, 34392),