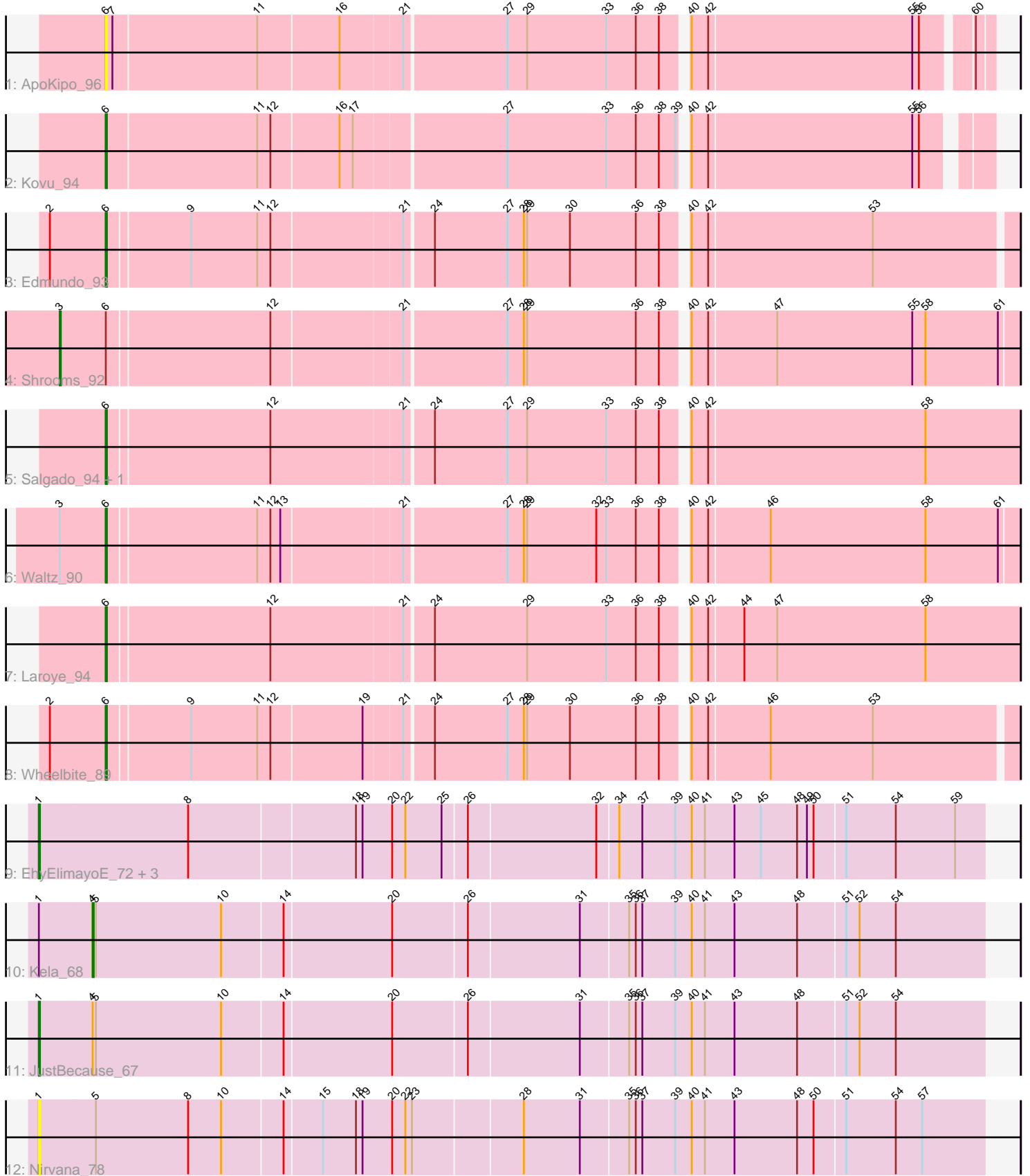


Pham 224970



Note: Tracks are now grouped by subcluster and scaled. Switching in subcluster is indicated by changes in track color. Track scale is now set by default to display the region 30 bp upstream of start 1 to 30 bp downstream of the last possible start. If this default region is judged to be packed too tightly with annotated starts, the track will be further scaled to only show that region of the ORF with annotated starts. This action will be indicated by adding "Zoomed" to the title. For starts, yellow indicates the location of called starts comprised solely of Glimmer/GeneMark auto-annotations, green indicates the location of called starts with at least 1 manual gene annotation.

Pham 224970 Report

This analysis was run 03/28/25 on database version 593.

Pham number 224970 has 16 members, 2 are drafts.

Phages represented in each track:

- Track 1 : ApoKipo_96
- Track 2 : Kovu_94
- Track 3 : Edmundo_93
- Track 4 : Shrooms_92
- Track 5 : Salgado_94, LiSara_91
- Track 6 : Waltz_90
- Track 7 : Laroye_94
- Track 8 : Wheelbite_89
- Track 9 : EhyElimayoE_72, Satis_72, Quantum_71, Kradal_72
- Track 10 : Kela_68
- Track 11 : JustBecause_67
- Track 12 : Nirvana_78

Summary of Final Annotations (See graph section above for start numbers):

The start number called the most often in the published annotations is 6, it was called in 7 of the 14 non-draft genes in the pham.

Genes that call this "Most Annotated" start:

- ApoKipo_96, Edmundo_93, Kovu_94, Laroye_94, LiSara_91, Salgado_94, Waltz_90, Wheelbite_89,

Genes that have the "Most Annotated" start but do not call it:

- Shrooms_92,

Genes that do not have the "Most Annotated" start:

- EhyElimayoE_72, JustBecause_67, Kela_68, Kradal_72, Nirvana_78, Quantum_71, Satis_72,

Summary by start number:

Start 1:

- Found in 7 of 16 (43.8%) of genes in pham
- Manual Annotations of this start: 5 of 14

- Called 85.7% of time when present
- Phage (with cluster) where this start called: EhyElimayoE_72 (BM), JustBecause_67 (BM), Kradal_72 (BM), Nirvana_78 (BM), Quantum_71 (BM), Satis_72 (BM),

Start 3:

- Found in 2 of 16 (12.5%) of genes in pham
- Manual Annotations of this start: 1 of 14
- Called 50.0% of time when present
- Phage (with cluster) where this start called: Shrooms_92 (AL),

Start 4:

- Found in 2 of 16 (12.5%) of genes in pham
- Manual Annotations of this start: 1 of 14
- Called 50.0% of time when present
- Phage (with cluster) where this start called: Kela_68 (BM),

Start 6:

- Found in 9 of 16 (56.2%) of genes in pham
- Manual Annotations of this start: 7 of 14
- Called 88.9% of time when present
- Phage (with cluster) where this start called: ApoKipo_96 (AL), Edmundo_93 (AL), Kovu_94 (AL), Laroye_94 (AL), LiSara_91 (AL), Salgado_94 (AL), Waltz_90 (AL), Wheelbite_89 (AL),

Summary by clusters:

There are 2 clusters represented in this pham: BM, AL,

Info for manual annotations of cluster AL:

- Start number 3 was manually annotated 1 time for cluster AL.
- Start number 6 was manually annotated 7 times for cluster AL.

Info for manual annotations of cluster BM:

- Start number 1 was manually annotated 5 times for cluster BM.
- Start number 4 was manually annotated 1 time for cluster BM.

Gene Information:

Gene: ApoKipo_96 Start: 55915, Stop: 56679, Start Num: 6

Candidate Starts for ApoKipo_96:

(Start: 6 @55915 has 7 MA's), (7, 55921), (11, 56050), (16, 56122), (21, 56176), (27, 56266), (29, 56284), (33, 56356), (36, 56383), (38, 56404), (40, 56422), (42, 56437), (55, 56620), (56, 56626), (60, 56665),

Gene: Edmundo_93 Start: 54507, Stop: 55298, Start Num: 6

Candidate Starts for Edmundo_93:

(2, 54456), (Start: 6 @54507 has 7 MA's), (9, 54579), (11, 54639), (12, 54651), (21, 54765), (24, 54789), (27, 54855), (28, 54870), (29, 54873), (30, 54912), (36, 54972), (38, 54993), (40, 55011), (42, 55026), (53, 55173),

Gene: EhyElimayoE_72 Start: 53494, Stop: 52652, Start Num: 1

Candidate Starts for EhyElimayoE_72:

(Start: 1 @53494 has 5 MA's), (8, 53359), (18, 53212), (19, 53206), (20, 53179), (22, 53167), (25, 53134), (26, 53113), (32, 52999), (34, 52981), (37, 52960), (39, 52930), (40, 52915), (41, 52903), (43, 52876), (45, 52852), (48, 52819), (49, 52810), (50, 52804), (51, 52777), (54, 52732), (59, 52678),

Gene: JustBecause_67 Start: 50858, Stop: 50016, Start Num: 1

Candidate Starts for JustBecause_67:

(Start: 1 @50858 has 5 MA's), (Start: 4 @50810 has 1 MA's), (5, 50807), (10, 50693), (14, 50639), (20, 50543), (26, 50477), (31, 50378), (35, 50336), (36, 50330), (37, 50324), (39, 50294), (40, 50279), (41, 50267), (43, 50240), (48, 50183), (51, 50141), (52, 50129), (54, 50096),

Gene: Kela_68 Start: 50675, Stop: 49881, Start Num: 4

Candidate Starts for Kela_68:

(Start: 1 @50723 has 5 MA's), (Start: 4 @50675 has 1 MA's), (5, 50672), (10, 50558), (14, 50504), (20, 50408), (26, 50342), (31, 50243), (35, 50201), (36, 50195), (37, 50189), (39, 50159), (40, 50144), (41, 50132), (43, 50105), (48, 50048), (51, 50006), (52, 49994), (54, 49961),

Gene: Kovu_94 Start: 55384, Stop: 56145, Start Num: 6

Candidate Starts for Kovu_94:

(Start: 6 @55384 has 7 MA's), (11, 55519), (12, 55531), (16, 55591), (17, 55603), (27, 55735), (33, 55825), (36, 55852), (38, 55873), (39, 55888), (40, 55891), (42, 55906), (55, 56089), (56, 56095),

Gene: Kradal_72 Start: 53494, Stop: 52652, Start Num: 1

Candidate Starts for Kradal_72:

(Start: 1 @53494 has 5 MA's), (8, 53359), (18, 53212), (19, 53206), (20, 53179), (22, 53167), (25, 53134), (26, 53113), (32, 52999), (34, 52981), (37, 52960), (39, 52930), (40, 52915), (41, 52903), (43, 52876), (45, 52852), (48, 52819), (49, 52810), (50, 52804), (51, 52777), (54, 52732), (59, 52678),

Gene: Laroye_94 Start: 54308, Stop: 55111, Start Num: 6

Candidate Starts for Laroye_94:

(Start: 6 @54308 has 7 MA's), (12, 54452), (21, 54569), (24, 54593), (29, 54677), (33, 54749), (36, 54776), (38, 54797), (40, 54815), (42, 54830), (44, 54860), (47, 54890), (58, 55025),

Gene: LiSara_91 Start: 54440, Stop: 55243, Start Num: 6

Candidate Starts for LiSara_91:

(Start: 6 @54440 has 7 MA's), (12, 54584), (21, 54701), (24, 54725), (27, 54791), (29, 54809), (33, 54881), (36, 54908), (38, 54929), (40, 54947), (42, 54962), (58, 55157),

Gene: Nirvana_78 Start: 55587, Stop: 54745, Start Num: 1

Candidate Starts for Nirvana_78:

(Start: 1 @55587 has 5 MA's), (5, 55536), (8, 55452), (10, 55422), (14, 55368), (15, 55335), (18, 55305), (19, 55299), (20, 55272), (22, 55260), (23, 55254), (28, 55158), (31, 55107), (35, 55065), (36, 55059), (37, 55053), (39, 55023), (40, 55008), (41, 54996), (43, 54969), (48, 54912), (50, 54897), (51, 54870), (54, 54825), (57, 54801),

Gene: Quantum_71 Start: 53494, Stop: 52652, Start Num: 1

Candidate Starts for Quantum_71:

(Start: 1 @53494 has 5 MA's), (8, 53359), (18, 53212), (19, 53206), (20, 53179), (22, 53167), (25, 53134), (26, 53113), (32, 52999), (34, 52981), (37, 52960), (39, 52930), (40, 52915), (41, 52903), (43, 52876), (45, 52852), (48, 52819), (49, 52810), (50, 52804), (51, 52777), (54, 52732), (59, 52678),

Gene: Salgado_94 Start: 54110, Stop: 54913, Start Num: 6

Candidate Starts for Salgado_94:

(Start: 6 @54110 has 7 MA's), (12, 54254), (21, 54371), (24, 54395), (27, 54461), (29, 54479), (33, 54551), (36, 54578), (38, 54599), (40, 54617), (42, 54632), (58, 54827),

Gene: Satis_72 Start: 53490, Stop: 52648, Start Num: 1

Candidate Starts for Satis_72:

(Start: 1 @53490 has 5 MA's), (8, 53355), (18, 53208), (19, 53202), (20, 53175), (22, 53163), (25, 53130), (26, 53109), (32, 52995), (34, 52977), (37, 52956), (39, 52926), (40, 52911), (41, 52899), (43, 52872), (45, 52848), (48, 52815), (49, 52806), (50, 52800), (51, 52773), (54, 52728), (59, 52674),

Gene: Shrooms_92 Start: 53698, Stop: 54537, Start Num: 3

Candidate Starts for Shrooms_92:

(Start: 3 @53698 has 1 MA's), (Start: 6 @53740 has 7 MA's), (12, 53884), (21, 53998), (27, 54088), (28, 54103), (29, 54106), (36, 54205), (38, 54226), (40, 54244), (42, 54259), (47, 54319), (55, 54442), (58, 54454), (61, 54520),

Gene: Waltz_90 Start: 52528, Stop: 53325, Start Num: 6

Candidate Starts for Waltz_90:

(Start: 3 @52486 has 1 MA's), (Start: 6 @52528 has 7 MA's), (11, 52660), (12, 52672), (13, 52681), (21, 52786), (27, 52876), (28, 52891), (29, 52894), (32, 52957), (33, 52966), (36, 52993), (38, 53014), (40, 53032), (42, 53047), (46, 53101), (58, 53242), (61, 53308),

Gene: Wheelbite_89 Start: 54204, Stop: 54995, Start Num: 6

Candidate Starts for Wheelbite_89:

(2, 54153), (Start: 6 @54204 has 7 MA's), (9, 54276), (11, 54336), (12, 54348), (19, 54429), (21, 54462), (24, 54486), (27, 54552), (28, 54567), (29, 54570), (30, 54609), (36, 54669), (38, 54690), (40, 54708), (42, 54723), (46, 54777), (53, 54870),