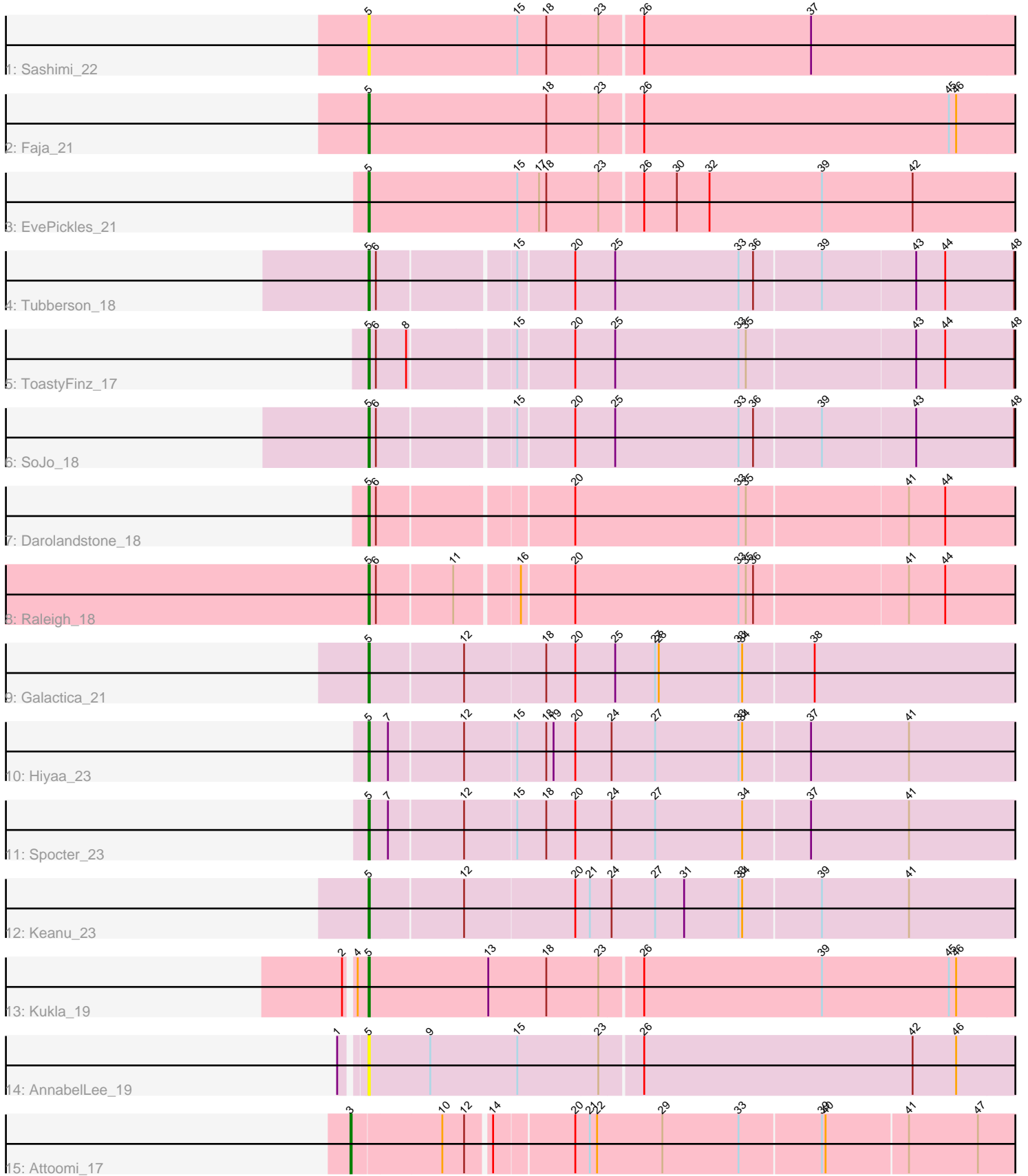


# Zoomed Pham 224977



Note: Tracks are now grouped by subcluster and scaled. Switching in subcluster is indicated by changes in track color. Track scale is now set by default to display the region 30 bp upstream of start 1 to 30 bp downstream of the last possible start. If this default region is judged to be packed too tightly with annotated starts, the track will be further scaled to only show that region of the ORF with annotated starts. This action will be indicated by adding "Zoomed" to the title. For starts, yellow indicates the location of called starts comprised solely of Glimmer/GeneMark auto-annotations, green indicates the location of called starts with at least 1 manual gene annotation.

## Pham 224977 Report

This analysis was run 03/28/25 on database version 593.

WARNING: Pham size does not match number of genes in report. Either unphamerated genes have been added (by you) or starterator has removed genes due to invalid start codon.

Pham number 224977 has 15 members, 2 are drafts.

Phages represented in each track:

- Track 1 : Sashimi\_22
- Track 2 : Faja\_21
- Track 3 : EvePickles\_21
- Track 4 : Tubberson\_18
- Track 5 : ToastyFinz\_17
- Track 6 : SoJo\_18
- Track 7 : Darolandstone\_18
- Track 8 : Raleigh\_18
- Track 9 : Galactica\_21
- Track 10 : Hiyaa\_23
- Track 11 : Spocter\_23
- Track 12 : Keanu\_23
- Track 13 : Kukla\_19
- Track 14 : AnnabelLee\_19
- Track 15 : Attoomi\_17

### ***Summary of Final Annotations (See graph section above for start numbers):***

The start number called the most often in the published annotations is 5, it was called in 12 of the 13 non-draft genes in the pham.

Genes that call this "Most Annotated" start:

- AnnabelLee\_19, Darolandstone\_18, EvePickles\_21, Faja\_21, Galactica\_21, Hiyaa\_23, Keanu\_23, Kukla\_19, Raleigh\_18, Sashimi\_22, SoJo\_18, Spocter\_23, ToastyFinz\_17, Tubberson\_18,

Genes that have the "Most Annotated" start but do not call it:

- 

Genes that do not have the "Most Annotated" start:

- Attoomi\_17,

### **Summary by start number:**

#### Start 3:

- Found in 1 of 15 ( 6.7% ) of genes in pham
- Manual Annotations of this start: 1 of 13
- Called 100.0% of time when present
- Phage (with cluster) where this start called: Attoomi\_17 (singleton),

#### Start 5:

- Found in 14 of 15 ( 93.3% ) of genes in pham
- Manual Annotations of this start: 12 of 13
- Called 100.0% of time when present
- Phage (with cluster) where this start called: AnnabelLee\_19 (FR), Darolandstone\_18 (BC2), EvePickles\_21 (AY), Faja\_21 (AY), Galactica\_21 (BQ), Hiyaa\_23 (BQ), Keanu\_23 (BQ), Kukla\_19 (FJ), Raleigh\_18 (BC2), Sashimi\_22 (AY), SoJo\_18 (BC1), Spocter\_23 (BQ), ToastyFinz\_17 (BC1), Tubberson\_18 (BC1),

### **Summary by clusters:**

There are 7 clusters represented in this pham: FR, singleton, BQ, AY, FJ, BC1, BC2,

#### Info for manual annotations of cluster AY:

- Start number 5 was manually annotated 2 times for cluster AY.

#### Info for manual annotations of cluster BC1:

- Start number 5 was manually annotated 3 times for cluster BC1.

#### Info for manual annotations of cluster BC2:

- Start number 5 was manually annotated 2 times for cluster BC2.

#### Info for manual annotations of cluster BQ:

- Start number 5 was manually annotated 4 times for cluster BQ.

#### Info for manual annotations of cluster FJ:

- Start number 5 was manually annotated 1 time for cluster FJ.

### **Gene Information:**

Gene: AnnabelLee\_19 Start: 12817, Stop: 13746, Start Num: 5

Candidate Starts for AnnabelLee\_19:

(1, 12802), (Start: 5 @12817 has 12 MA's), (9, 12868), (15, 12940), (23, 13006), (26, 13039), (42, 13261), (46, 13297), (50, 13369), (52, 13399), (62, 13537), (71, 13594), (73, 13615), (81, 13729),

Gene: Attoomi\_17 Start: 14186, Stop: 15451, Start Num: 3

Candidate Starts for Attoomi\_17:

(Start: 3 @14186 has 1 MA's), (10, 14258), (12, 14276), (14, 14294), (20, 14357), (21, 14369), (22, 14375), (29, 14429), (33, 14492), (39, 14558), (40, 14561), (41, 14627), (47, 14684), (49, 14726), (57, 14873), (61, 14906), (68, 14969), (80, 15128), (84, 15173), (85, 15185), (87, 15191), (89, 15227), (91,

15263), (92, 15266), (93, 15278), (94, 15302), (95, 15332), (98, 15353), (100, 15371),

Gene: Darolandstone\_18 Start: 13797, Stop: 14798, Start Num: 5

Candidate Starts for Darolandstone\_18:

(Start: 5 @13797 has 12 MA's), (6, 13803), (20, 13953), (33, 14088), (35, 14094), (41, 14223), (44, 14253), (53, 14388), (75, 14664), (76, 14697), (77, 14712),

Gene: EvePickles\_21 Start: 16081, Stop: 17058, Start Num: 5

Candidate Starts for EvePickles\_21:

(Start: 5 @16081 has 12 MA's), (15, 16204), (17, 16222), (18, 16228), (23, 16270), (26, 16303), (30, 16330), (32, 16357), (39, 16450), (42, 16525), (51, 16654), (52, 16663), (55, 16690), (56, 16744), (61, 16795),

Gene: Faja\_21 Start: 15977, Stop: 16954, Start Num: 5

Candidate Starts for Faja\_21:

(Start: 5 @15977 has 12 MA's), (18, 16124), (23, 16166), (26, 16199), (45, 16451), (46, 16457), (52, 16559), (56, 16640), (61, 16691), (63, 16712), (66, 16730), (82, 16922),

Gene: Galactica\_21 Start: 18569, Stop: 19837, Start Num: 5

Candidate Starts for Galactica\_21:

(Start: 5 @18569 has 12 MA's), (12, 18644), (18, 18710), (20, 18734), (25, 18767), (27, 18800), (28, 18803), (33, 18869), (34, 18872), (38, 18929), (60, 19274), (67, 19343), (70, 19379), (72, 19397), (85, 19568), (92, 19646), (97, 19733), (100, 19754),

Gene: Hiyaa\_23 Start: 19604, Stop: 20875, Start Num: 5

Candidate Starts for Hiyaa\_23:

(Start: 5 @19604 has 12 MA's), (7, 19619), (12, 19679), (15, 19721), (18, 19745), (19, 19751), (20, 19769), (24, 19799), (27, 19835), (33, 19904), (34, 19907), (37, 19961), (41, 20042), (60, 20309), (72, 20429), (77, 20531), (81, 20555), (85, 20606), (86, 20609), (87, 20612), (90, 20672), (96, 20771), (99, 20792), (102, 20846), (104, 20855),

Gene: Keanu\_23 Start: 19646, Stop: 20911, Start Num: 5

Candidate Starts for Keanu\_23:

(Start: 5 @19646 has 12 MA's), (12, 19721), (20, 19811), (21, 19823), (24, 19841), (27, 19877), (31, 19901), (33, 19946), (34, 19949), (39, 20012), (41, 20084), (60, 20351), (63, 20390), (72, 20471), (74, 20513), (83, 20621), (86, 20645), (100, 20828), (101, 20864), (103, 20882), (105, 20903),

Gene: Kukla\_19 Start: 15456, Stop: 16433, Start Num: 5

Candidate Starts for Kukla\_19:

(2, 15444), (4, 15450), (Start: 5 @15456 has 12 MA's), (13, 15555), (18, 15603), (23, 15645), (26, 15678), (39, 15825), (45, 15930), (46, 15936), (51, 16029), (54, 16059), (56, 16119), (61, 16170), (63, 16191),

Gene: Raleigh\_18 Start: 13982, Stop: 14983, Start Num: 5

Candidate Starts for Raleigh\_18:

(Start: 5 @13982 has 12 MA's), (6, 13988), (11, 14048), (16, 14096), (20, 14138), (33, 14273), (35, 14279), (36, 14285), (41, 14408), (44, 14438), (53, 14573), (64, 14717), (69, 14765), (75, 14849), (77, 14897),

Gene: Sashimi\_22 Start: 16083, Stop: 17060, Start Num: 5

Candidate Starts for Sashimi\_22:

(Start: 5 @16083 has 12 MA's), (15, 16206), (18, 16230), (23, 16272), (26, 16305), (37, 16443), (52, 16665), (61, 16797), (63, 16818),

Gene: SoJo\_18 Start: 13632, Stop: 14639, Start Num: 5

Candidate Starts for SoJo\_18:

(Start: 5 @13632 has 12 MA's), (6, 13638), (15, 13743), (20, 13788), (25, 13821), (33, 13923), (36, 13935), (39, 13989), (43, 14064), (48, 14145), (65, 14367), (78, 14541), (79, 14547), (85, 14610), (88, 14631),

Gene: Spocter\_23 Start: 19592, Stop: 20863, Start Num: 5

Candidate Starts for Spocter\_23:

(Start: 5 @19592 has 12 MA's), (7, 19607), (12, 19667), (15, 19709), (18, 19733), (20, 19757), (24, 19787), (27, 19823), (34, 19895), (37, 19949), (41, 20030), (60, 20297), (72, 20417), (77, 20519), (81, 20543), (85, 20594), (86, 20597), (87, 20600), (90, 20660), (96, 20759), (99, 20780), (102, 20834), (104, 20843),

Gene: ToastyFinz\_17 Start: 13310, Stop: 14317, Start Num: 5

Candidate Starts for ToastyFinz\_17:

(Start: 5 @13310 has 12 MA's), (6, 13316), (8, 13340), (15, 13421), (20, 13466), (25, 13499), (33, 13601), (35, 13607), (43, 13742), (44, 13766), (48, 13823), (58, 13985), (59, 13991), (65, 14045), (78, 14219), (88, 14309),

Gene: Tubberson\_18 Start: 13632, Stop: 14639, Start Num: 5

Candidate Starts for Tubberson\_18:

(Start: 5 @13632 has 12 MA's), (6, 13638), (15, 13743), (20, 13788), (25, 13821), (33, 13923), (36, 13935), (39, 13989), (43, 14064), (44, 14088), (48, 14145), (65, 14367), (78, 14541), (79, 14547), (85, 14610), (88, 14631),