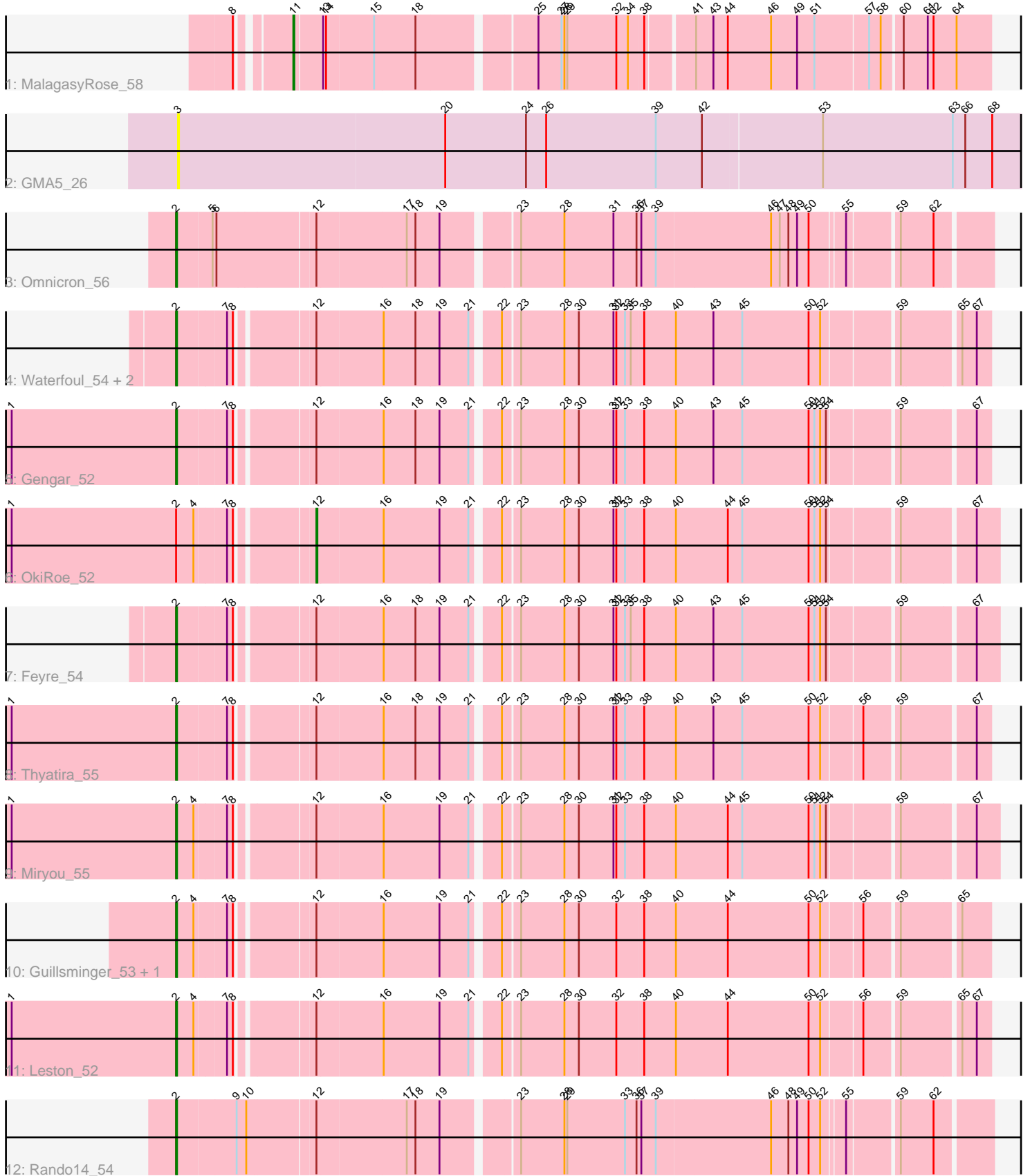


Pham 224985



Note: Tracks are now grouped by subcluster and scaled. Switching in subcluster is indicated by changes in track color. Track scale is now set by default to display the region 30 bp upstream of start 1 to 30 bp downstream of the last possible start. If this default region is judged to be packed too tightly with annotated starts, the track will be further scaled to only show that region of the ORF with annotated starts. This action will be indicated by adding "Zoomed" to the title. For starts, yellow indicates the location of called starts comprised solely of Glimmer/GeneMark auto-annotations, green indicates the location of called starts with at least 1 manual gene annotation.

Pham 224985 Report

This analysis was run 03/28/25 on database version 593.

Pham number 224985 has 15 members, 1 are drafts.

Phages represented in each track:

- Track 1 : MalagasyRose_58
- Track 2 : GMA5_26
- Track 3 : Omnicron_56
- Track 4 : Waterfoul_54, SoSeph_53, Heftyboy_53
- Track 5 : Gengar_52
- Track 6 : OkiRoe_52
- Track 7 : Feyre_54
- Track 8 : Thyatira_55
- Track 9 : Miryou_55
- Track 10 : Guillsminger_53, Paola_52
- Track 11 : Leston_52
- Track 12 : Rando14_54

Summary of Final Annotations (See graph section above for start numbers):

The start number called the most often in the published annotations is 2, it was called in 12 of the 14 non-draft genes in the pham.

Genes that call this "Most Annotated" start:

- Feyre_54, Gengar_52, Guillsminger_53, Heftyboy_53, Leston_52, Miryou_55, Omnicron_56, Paola_52, Rando14_54, SoSeph_53, Thyatira_55, Waterfoul_54,

Genes that have the "Most Annotated" start but do not call it:

- OkiRoe_52,

Genes that do not have the "Most Annotated" start:

- GMA5_26, MalagasyRose_58,

Summary by start number:

Start 2:

- Found in 13 of 15 (86.7%) of genes in pham
- Manual Annotations of this start: 12 of 14
- Called 92.3% of time when present

- Phage (with cluster) where this start called: Feyre_54 (K5), Gengar_52 (K5), Guillsminger_53 (K5), Heftyboy_53 (K5), Leston_52 (K5), Miryou_55 (K5), Omnicron_56 (K5), Paola_52 (K5), Rando14_54 (K5), SoSeph_53 (K5), Thyatira_55 (K5), Waterfoul_54 (K5),

Start 3:

- Found in 1 of 15 (6.7%) of genes in pham
- No Manual Annotations of this start.
- Called 100.0% of time when present
- Phage (with cluster) where this start called: GMA5_26 (CW2),

Start 11:

- Found in 1 of 15 (6.7%) of genes in pham
- Manual Annotations of this start: 1 of 14
- Called 100.0% of time when present
- Phage (with cluster) where this start called: MalagasyRose_58 (AG),

Start 12:

- Found in 13 of 15 (86.7%) of genes in pham
- Manual Annotations of this start: 1 of 14
- Called 7.7% of time when present
- Phage (with cluster) where this start called: OkiRoe_52 (K5),

Summary by clusters:

There are 3 clusters represented in this pham: CW2, AG, K5,

Info for manual annotations of cluster AG:

- Start number 11 was manually annotated 1 time for cluster AG.

Info for manual annotations of cluster K5:

- Start number 2 was manually annotated 12 times for cluster K5.
- Start number 12 was manually annotated 1 time for cluster K5.

Gene Information:

Gene: Feyre_54 Start: 40604, Stop: 41392, Start Num: 2

Candidate Starts for Feyre_54:

(Start: 2 @40604 has 12 MA's), (7, 40652), (8, 40658), (Start: 12 @40727 has 1 MA's), (16, 40793), (18, 40826), (19, 40850), (21, 40880), (22, 40904), (23, 40919), (28, 40964), (30, 40979), (31, 41015), (32, 41018), (33, 41027), (35, 41033), (38, 41045), (40, 41078), (43, 41117), (45, 41147), (50, 41216), (51, 41222), (52, 41228), (54, 41234), (59, 41300), (67, 41369),

Gene: GMA5_26 Start: 16193, Stop: 17065, Start Num: 3

Candidate Starts for GMA5_26:

(3, 16193), (20, 16469), (24, 16553), (26, 16574), (39, 16688), (42, 16736), (53, 16856), (63, 16991), (66, 17003), (68, 17030),

Gene: Gengar_52 Start: 39018, Stop: 39797, Start Num: 2

Candidate Starts for Gengar_52:

(1, 38847), (Start: 2 @39018 has 12 MA's), (7, 39066), (8, 39072), (Start: 12 @39141 has 1 MA's), (16, 39207), (18, 39240), (19, 39264), (21, 39294), (22, 39318), (23, 39333), (28, 39378), (30, 39393), (31, 39429), (32, 39432), (33, 39441), (38, 39459), (40, 39492), (43, 39531), (45, 39561), (50, 39630), (51, 39636), (52, 39642), (54, 39648), (59, 39714), (67, 39783),

Gene: Guillsminger_53 Start: 38989, Stop: 39768, Start Num: 2

Candidate Starts for Guillsminger_53:

(Start: 2 @38989 has 12 MA's), (4, 39007), (7, 39037), (8, 39043), (Start: 12 @39112 has 1 MA's), (16, 39178), (19, 39235), (21, 39265), (22, 39289), (23, 39304), (28, 39349), (30, 39364), (32, 39403), (38, 39430), (40, 39463), (44, 39517), (50, 39601), (52, 39613), (56, 39652), (59, 39685), (65, 39739),

Gene: Heftyboy_53 Start: 39361, Stop: 40140, Start Num: 2

Candidate Starts for Heftyboy_53:

(Start: 2 @39361 has 12 MA's), (7, 39409), (8, 39415), (Start: 12 @39484 has 1 MA's), (16, 39550), (18, 39583), (19, 39607), (21, 39637), (22, 39661), (23, 39676), (28, 39721), (30, 39736), (31, 39772), (32, 39775), (33, 39784), (35, 39790), (38, 39802), (40, 39835), (43, 39874), (45, 39904), (50, 39973), (52, 39985), (59, 40057), (65, 40111), (67, 40126),

Gene: Leston_52 Start: 39118, Stop: 39897, Start Num: 2

Candidate Starts for Leston_52:

(1, 38947), (Start: 2 @39118 has 12 MA's), (4, 39136), (7, 39166), (8, 39172), (Start: 12 @39241 has 1 MA's), (16, 39307), (19, 39364), (21, 39394), (22, 39418), (23, 39433), (28, 39478), (30, 39493), (32, 39532), (38, 39559), (40, 39592), (44, 39646), (50, 39730), (52, 39742), (56, 39781), (59, 39814), (65, 39868), (67, 39883),

Gene: MalagasyRose_58 Start: 39058, Stop: 39738, Start Num: 11

Candidate Starts for MalagasyRose_58:

(8, 39016), (Start: 11 @39058 has 1 MA's), (13, 39085), (14, 39088), (15, 39136), (18, 39178), (25, 39289), (27, 39313), (28, 39316), (29, 39319), (32, 39370), (34, 39382), (38, 39397), (41, 39442), (43, 39460), (44, 39475), (46, 39520), (49, 39547), (51, 39565), (57, 39619), (58, 39631), (60, 39649), (61, 39673), (62, 39679), (64, 39703),

Gene: Miryou_55 Start: 41320, Stop: 42108, Start Num: 2

Candidate Starts for Miryou_55:

(1, 41149), (Start: 2 @41320 has 12 MA's), (4, 41338), (7, 41368), (8, 41374), (Start: 12 @41443 has 1 MA's), (16, 41509), (19, 41566), (21, 41596), (22, 41620), (23, 41635), (28, 41680), (30, 41695), (31, 41731), (32, 41734), (33, 41743), (38, 41761), (40, 41794), (44, 41848), (45, 41863), (50, 41932), (51, 41938), (52, 41944), (54, 41950), (59, 42016), (67, 42085),

Gene: OkiRoe_52 Start: 39114, Stop: 39779, Start Num: 12

Candidate Starts for OkiRoe_52:

(1, 38820), (Start: 2 @38991 has 12 MA's), (4, 39009), (7, 39039), (8, 39045), (Start: 12 @39114 has 1 MA's), (16, 39180), (19, 39237), (21, 39267), (22, 39291), (23, 39306), (28, 39351), (30, 39366), (31, 39402), (32, 39405), (33, 39414), (38, 39432), (40, 39465), (44, 39519), (45, 39534), (50, 39603), (51, 39609), (52, 39615), (54, 39621), (59, 39687), (67, 39756),

Gene: Omnicron_56 Start: 39478, Stop: 40266, Start Num: 2

Candidate Starts for Omnicron_56:

(Start: 2 @39478 has 12 MA's), (5, 39514), (6, 39517), (Start: 12 @39613 has 1 MA's), (17, 39703), (18, 39712), (19, 39736), (23, 39805), (28, 39850), (31, 39901), (36, 39925), (37, 39928), (39, 39943), (46, 40060), (47, 40069), (48, 40078), (49, 40087), (50, 40099), (55, 40132), (59, 40180), (62, 40213),

Gene: Paola_52 Start: 38989, Stop: 39768, Start Num: 2

Candidate Starts for Paola_52:

(Start: 2 @38989 has 12 MA's), (4, 39007), (7, 39037), (8, 39043), (Start: 12 @39112 has 1 MA's), (16, 39178), (19, 39235), (21, 39265), (22, 39289), (23, 39304), (28, 39349), (30, 39364), (32, 39403), (38, 39430), (40, 39463), (44, 39517), (50, 39601), (52, 39613), (56, 39652), (59, 39685), (65, 39739),

Gene: Rando14_54 Start: 37175, Stop: 37963, Start Num: 2

Candidate Starts for Rando14_54:

(Start: 2 @37175 has 12 MA's), (9, 37235), (10, 37244), (Start: 12 @37310 has 1 MA's), (17, 37400), (18, 37409), (19, 37433), (23, 37502), (28, 37547), (29, 37550), (33, 37610), (36, 37622), (37, 37625), (39, 37640), (46, 37757), (48, 37775), (49, 37784), (50, 37796), (52, 37808), (55, 37829), (59, 37877), (62, 37910),

Gene: SoSeph_53 Start: 39361, Stop: 40140, Start Num: 2

Candidate Starts for SoSeph_53:

(Start: 2 @39361 has 12 MA's), (7, 39409), (8, 39415), (Start: 12 @39484 has 1 MA's), (16, 39550), (18, 39583), (19, 39607), (21, 39637), (22, 39661), (23, 39676), (28, 39721), (30, 39736), (31, 39772), (32, 39775), (33, 39784), (35, 39790), (38, 39802), (40, 39835), (43, 39874), (45, 39904), (50, 39973), (52, 39985), (59, 40057), (65, 40111), (67, 40126),

Gene: Thyatira_55 Start: 41325, Stop: 42104, Start Num: 2

Candidate Starts for Thyatira_55:

(1, 41154), (Start: 2 @41325 has 12 MA's), (7, 41373), (8, 41379), (Start: 12 @41448 has 1 MA's), (16, 41514), (18, 41547), (19, 41571), (21, 41601), (22, 41625), (23, 41640), (28, 41685), (30, 41700), (31, 41736), (32, 41739), (33, 41748), (38, 41766), (40, 41799), (43, 41838), (45, 41868), (50, 41937), (52, 41949), (56, 41988), (59, 42021), (67, 42090),

Gene: Waterfoul_54 Start: 39423, Stop: 40202, Start Num: 2

Candidate Starts for Waterfoul_54:

(Start: 2 @39423 has 12 MA's), (7, 39471), (8, 39477), (Start: 12 @39546 has 1 MA's), (16, 39612), (18, 39645), (19, 39669), (21, 39699), (22, 39723), (23, 39738), (28, 39783), (30, 39798), (31, 39834), (32, 39837), (33, 39846), (35, 39852), (38, 39864), (40, 39897), (43, 39936), (45, 39966), (50, 40035), (52, 40047), (59, 40119), (65, 40173), (67, 40188),