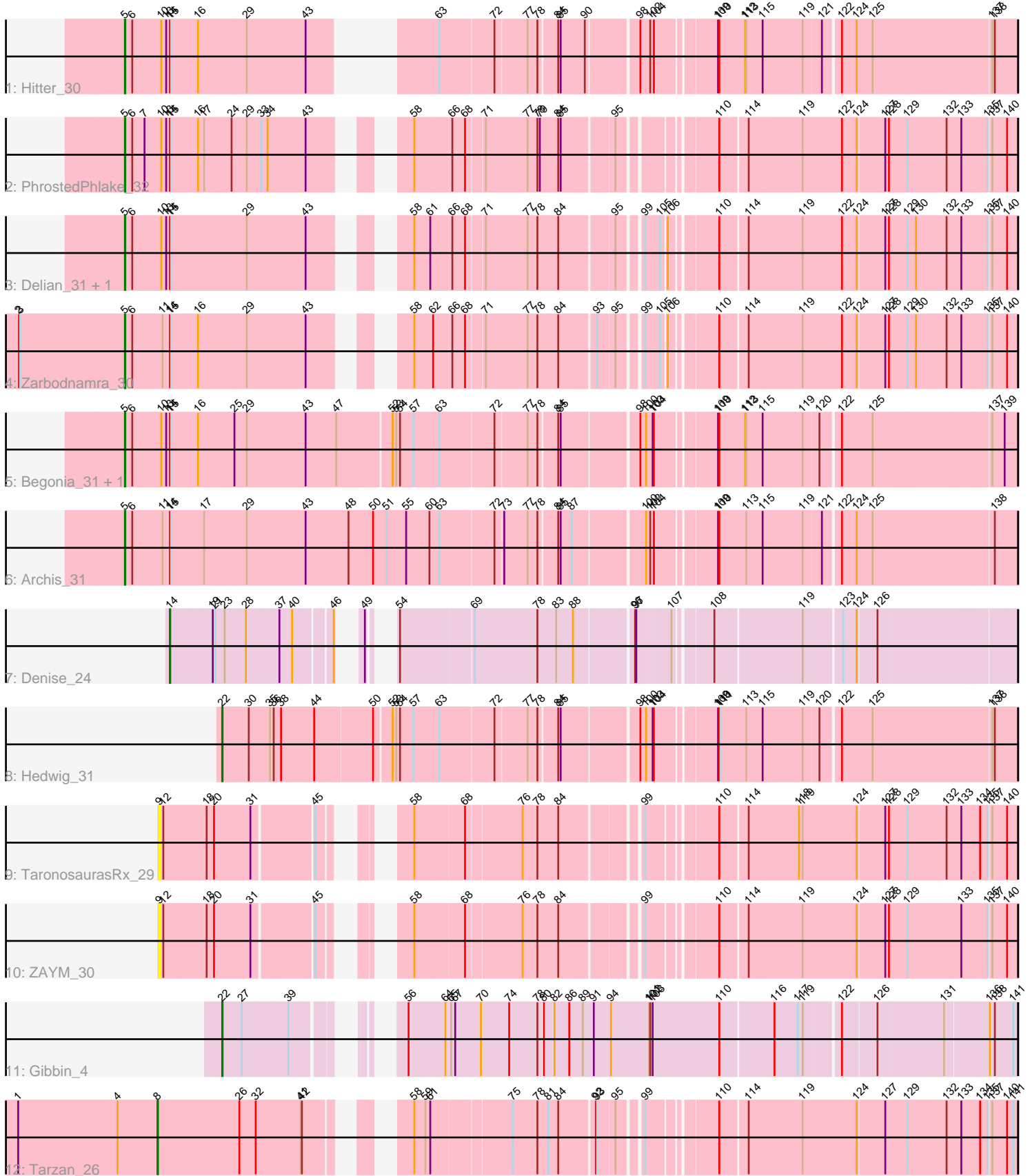


Pham 224997



Note: Tracks are now grouped by subcluster and scaled. Switching in subcluster is indicated by changes in track color. Track scale is now set by default to display the region 30 bp upstream of start 1 to 30 bp downstream of the last possible start. If this default region is judged to be packed too tightly with annotated starts, the track will be further scaled to only show that region of the ORF with annotated starts. This action will be indicated by adding "Zoomed" to the title. For starts, yellow indicates the location of called starts comprised solely of Glimmer/GeneMark auto-annotations, green indicates the location of called starts with at least 1 manual gene annotation.

Pham 224997 Report

This analysis was run 03/28/25 on database version 593.

Pham number 224997 has 14 members, 2 are drafts.

Phages represented in each track:

- Track 1 : Hitter_30
- Track 2 : PhrostedPhlake_32
- Track 3 : Delian_31, CaptainKirk2_30
- Track 4 : Zarbodnamra_30
- Track 5 : Begonia_31, Malachai_31
- Track 6 : Archis_31
- Track 7 : Denise_24
- Track 8 : Hedwig_31
- Track 9 : TaronosaurusRx_29
- Track 10 : ZAYM_30
- Track 11 : Gibbin_4
- Track 12 : Tarzan_26

Summary of Final Annotations (See graph section above for start numbers):

The start number called the most often in the published annotations is 5, it was called in 8 of the 12 non-draft genes in the pham.

Genes that call this "Most Annotated" start:

- Archis_31, Begonia_31, CaptainKirk2_30, Delian_31, Hitter_30, Malachai_31, PhrostedPhlake_32, Zarbodnamra_30,

Genes that have the "Most Annotated" start but do not call it:

-

Genes that do not have the "Most Annotated" start:

- Denise_24, Gibbin_4, Hedwig_31, TaronosaurusRx_29, Tarzan_26, ZAYM_30,

Summary by start number:

Start 5:

- Found in 8 of 14 (57.1%) of genes in pham
- Manual Annotations of this start: 8 of 12
- Called 100.0% of time when present

- Phage (with cluster) where this start called: Archis_31 (CV), Begonia_31 (CV), CaptainKirk2_30 (CV), Delian_31 (CV), Hitter_30 (CV), Malachai_31 (CV), PhrostedPhlake_32 (CV), Zarbodnamra_30 (CV),

Start 8:

- Found in 1 of 14 (7.1%) of genes in pham
- Manual Annotations of this start: 1 of 12
- Called 100.0% of time when present
- Phage (with cluster) where this start called: Tarzan_26 (DY),

Start 9:

- Found in 2 of 14 (14.3%) of genes in pham
- No Manual Annotations of this start.
- Called 100.0% of time when present
- Phage (with cluster) where this start called: TaronosaurusRx_29 (DB), ZAYM_30 (DB),

Start 14:

- Found in 9 of 14 (64.3%) of genes in pham
- Manual Annotations of this start: 1 of 12
- Called 11.1% of time when present
- Phage (with cluster) where this start called: Denise_24 (CZ5),

Start 22:

- Found in 2 of 14 (14.3%) of genes in pham
- Manual Annotations of this start: 2 of 12
- Called 100.0% of time when present
- Phage (with cluster) where this start called: Gibbin_4 (DV), Hedwig_31 (DB),

Summary by clusters:

There are 5 clusters represented in this pham: DV, DY, DB, CV, CZ5,

Info for manual annotations of cluster CV:

- Start number 5 was manually annotated 8 times for cluster CV.

Info for manual annotations of cluster CZ5:

- Start number 14 was manually annotated 1 time for cluster CZ5.

Info for manual annotations of cluster DB:

- Start number 22 was manually annotated 1 time for cluster DB.

Info for manual annotations of cluster DV:

- Start number 22 was manually annotated 1 time for cluster DV.

Info for manual annotations of cluster DY:

- Start number 8 was manually annotated 1 time for cluster DY.

Gene Information:

Gene: Archis_31 Start: 25439, Stop: 27490, Start Num: 5

Candidate Starts for Archis_31:

(Start: 5 @25439 has 8 MA's), (6, 25457), (11, 25529), (Start: 14 @25547 has 1 MA's), (15, 25550), (17, 25631), (29, 25727), (43, 25871), (48, 25976), (50, 26036), (51, 26069), (55, 26117), (60, 26171), (63, 26195), (72, 26324), (73, 26342), (77, 26399), (78, 26423), (84, 26465), (85, 26471), (87, 26498), (100, 26657), (102, 26663), (104, 26672), (109, 26798), (110, 26801), (113, 26867), (115, 26906), (119, 27002), (121, 27044), (122, 27077), (124, 27113), (125, 27152), (138, 27437),

Gene: Begonia_31 Start: 25691, Stop: 27724, Start Num: 5

Candidate Starts for Begonia_31:

(Start: 5 @25691 has 8 MA's), (6, 25709), (10, 25778), (13, 25790), (Start: 14 @25799 has 1 MA's), (15, 25802), (16, 25868), (25, 25949), (29, 25979), (43, 26123), (47, 26198), (52, 26321), (53, 26330), (54, 26339), (57, 26366), (63, 26429), (72, 26558), (77, 26633), (78, 26657), (84, 26699), (85, 26705), (98, 26879), (100, 26891), (103, 26903), (104, 26906), (109, 27032), (110, 27035), (112, 27098), (113, 27101), (115, 27140), (119, 27236), (120, 27272), (122, 27311), (125, 27386), (137, 27665), (139, 27695),

Gene: CaptainKirk2_30 Start: 25252, Stop: 27144, Start Num: 5

Candidate Starts for CaptainKirk2_30:

(Start: 5 @25252 has 8 MA's), (6, 25270), (10, 25339), (13, 25351), (Start: 14 @25360 has 1 MA's), (15, 25363), (29, 25540), (43, 25684), (58, 25825), (61, 25864), (66, 25912), (68, 25939), (71, 25978), (77, 26080), (78, 26104), (84, 26155), (95, 26272), (99, 26314), (105, 26341), (106, 26350), (110, 26449), (114, 26509), (119, 26638), (122, 26734), (124, 26770), (127, 26833), (128, 26842), (129, 26887), (130, 26908), (132, 26983), (133, 27016), (135, 27076), (137, 27082), (140, 27118),

Gene: Delian_31 Start: 25250, Stop: 27142, Start Num: 5

Candidate Starts for Delian_31:

(Start: 5 @25250 has 8 MA's), (6, 25268), (10, 25337), (13, 25349), (Start: 14 @25358 has 1 MA's), (15, 25361), (29, 25538), (43, 25682), (58, 25823), (61, 25862), (66, 25910), (68, 25937), (71, 25976), (77, 26078), (78, 26102), (84, 26153), (95, 26270), (99, 26312), (105, 26339), (106, 26348), (110, 26447), (114, 26507), (119, 26636), (122, 26732), (124, 26768), (127, 26831), (128, 26840), (129, 26885), (130, 26906), (132, 26981), (133, 27014), (135, 27074), (137, 27080), (140, 27116),

Gene: Denise_24 Start: 21110, Stop: 22873, Start Num: 14

Candidate Starts for Denise_24:

(Start: 14 @21110 has 1 MA's), (19, 21212), (21, 21218), (23, 21239), (28, 21290), (37, 21368), (40, 21398), (46, 21476), (49, 21488), (54, 21503), (69, 21671), (78, 21824), (83, 21866), (88, 21905), (96, 22034), (97, 22037), (107, 22109), (108, 22184), (119, 22388), (123, 22469), (124, 22502), (126, 22547),

Gene: Gibbin_4 Start: 3409, Stop: 5115, Start Num: 22

Candidate Starts for Gibbin_4:

(Start: 22 @3409 has 2 MA's), (27, 3457), (39, 3565), (56, 3700), (64, 3790), (65, 3799), (67, 3805), (70, 3868), (74, 3937), (78, 4006), (80, 4015), (82, 4039), (86, 4072), (89, 4105), (91, 4132), (94, 4174), (101, 4267), (102, 4270), (103, 4276), (110, 4438), (116, 4561), (117, 4615), (119, 4627), (122, 4702), (126, 4783), (131, 4942), (136, 5047), (138, 5059), (141, 5104),

Gene: Hedwig_31 Start: 25332, Stop: 27116, Start Num: 22

Candidate Starts for Hedwig_31:

(Start: 22 @25332 has 2 MA's), (30, 25392), (35, 25437), (36, 25446), (38, 25464), (44, 25545), (50, 25674), (52, 25713), (53, 25722), (54, 25731), (57, 25758), (63, 25821), (72, 25950), (77, 26025), (78, 26049), (84, 26091), (85, 26097), (98, 26271), (100, 26283), (103, 26295), (104, 26298), (109, 26424), (110, 26427), (111, 26430), (113, 26493), (115, 26532), (119, 26628), (120, 26664), (122, 26703), (125, 26778), (137, 27057), (138, 27063),

Gene: Hitter_30 Start: 25228, Stop: 27120, Start Num: 5

Candidate Starts for Hitter_30:

(Start: 5 @25228 has 8 MA's), (6, 25246), (10, 25315), (13, 25327), (Start: 14 @25336 has 1 MA's), (15, 25339), (16, 25405), (29, 25516), (43, 25660), (63, 25825), (72, 25954), (77, 26029), (78, 26053), (84, 26095), (85, 26101), (90, 26158), (98, 26275), (102, 26293), (104, 26302), (109, 26428), (110, 26431), (112, 26494), (113, 26497), (115, 26536), (119, 26632), (121, 26674), (122, 26707), (124, 26743), (125, 26782), (137, 27061), (138, 27067),

Gene: Malachai_31 Start: 25691, Stop: 27724, Start Num: 5

Candidate Starts for Malachai_31:

(Start: 5 @25691 has 8 MA's), (6, 25709), (10, 25778), (13, 25790), (Start: 14 @25799 has 1 MA's), (15, 25802), (16, 25868), (25, 25949), (29, 25979), (43, 26123), (47, 26198), (52, 26321), (53, 26330), (54, 26339), (57, 26366), (63, 26429), (72, 26558), (77, 26633), (78, 26657), (84, 26699), (85, 26705), (98, 26879), (100, 26891), (103, 26903), (104, 26906), (109, 27032), (110, 27035), (112, 27098), (113, 27101), (115, 27140), (119, 27236), (120, 27272), (122, 27311), (125, 27386), (137, 27665), (139, 27695),

Gene: PhrostedPhlake_32 Start: 25921, Stop: 27813, Start Num: 5

Candidate Starts for PhrostedPhlake_32:

(Start: 5 @25921 has 8 MA's), (6, 25939), (7, 25969), (10, 26008), (13, 26020), (Start: 14 @26029 has 1 MA's), (15, 26032), (16, 26098), (17, 26113), (24, 26173), (29, 26209), (33, 26245), (34, 26260), (43, 26353), (58, 26494), (66, 26581), (68, 26608), (71, 26647), (77, 26749), (78, 26773), (79, 26779), (84, 26824), (85, 26830), (95, 26941), (110, 27118), (114, 27178), (119, 27307), (122, 27403), (124, 27439), (127, 27502), (128, 27511), (129, 27556), (132, 27652), (133, 27685), (135, 27745), (137, 27751), (140, 27787),

Gene: TaronosaurusRx_29 Start: 24667, Stop: 26418, Start Num: 9

Candidate Starts for TaronosaurusRx_29:

(9, 24667), (12, 24676), (18, 24781), (20, 24799), (31, 24880), (45, 25009), (58, 25099), (68, 25213), (76, 25342), (78, 25378), (84, 25429), (99, 25588), (110, 25723), (114, 25783), (118, 25903), (119, 25912), (124, 26044), (127, 26107), (128, 26116), (129, 26161), (132, 26257), (133, 26290), (134, 26332), (135, 26350), (137, 26356), (140, 26392),

Gene: Tarzan_26 Start: 21313, Stop: 23103, Start Num: 8

Candidate Starts for Tarzan_26:

(1, 20977), (4, 21220), (Start: 8 @21313 has 1 MA's), (26, 21499), (32, 21538), (41, 21643), (42, 21646), (58, 21784), (59, 21811), (61, 21823), (75, 22003), (78, 22063), (81, 22090), (84, 22114), (92, 22189), (93, 22192), (95, 22231), (99, 22273), (110, 22408), (114, 22468), (119, 22597), (124, 22729), (127, 22792), (129, 22846), (132, 22942), (133, 22975), (134, 23017), (135, 23035), (137, 23041), (140, 23077), (141, 23092),

Gene: ZAYM_30 Start: 25127, Stop: 26878, Start Num: 9

Candidate Starts for ZAYM_30:

(9, 25127), (12, 25136), (18, 25241), (20, 25259), (31, 25340), (45, 25469), (58, 25559), (68, 25673), (76, 25802), (78, 25838), (84, 25889), (99, 26048), (110, 26183), (114, 26243), (119, 26372), (124, 26504), (127, 26567), (128, 26576), (129, 26621), (133, 26750), (135, 26810), (137, 26816), (140, 26852),

Gene: Zarbodnamra_30 Start: 25272, Stop: 27164, Start Num: 5

Candidate Starts for Zarbodnamra_30:

(2, 25014), (3, 25017), (Start: 5 @25272 has 8 MA's), (6, 25290), (11, 25362), (Start: 14 @25380 has 1 MA's), (15, 25383), (16, 25449), (29, 25560), (43, 25704), (58, 25845), (62, 25890), (66, 25932), (68,

25959), (71, 25998), (77, 26100), (78, 26124), (84, 26175), (93, 26253), (95, 26292), (99, 26334), (105, 26361), (106, 26370), (110, 26469), (114, 26529), (119, 26658), (122, 26754), (124, 26790), (127, 26853), (128, 26862), (129, 26907), (130, 26928), (132, 27003), (133, 27036), (135, 27096), (137, 27102), (140, 27138),