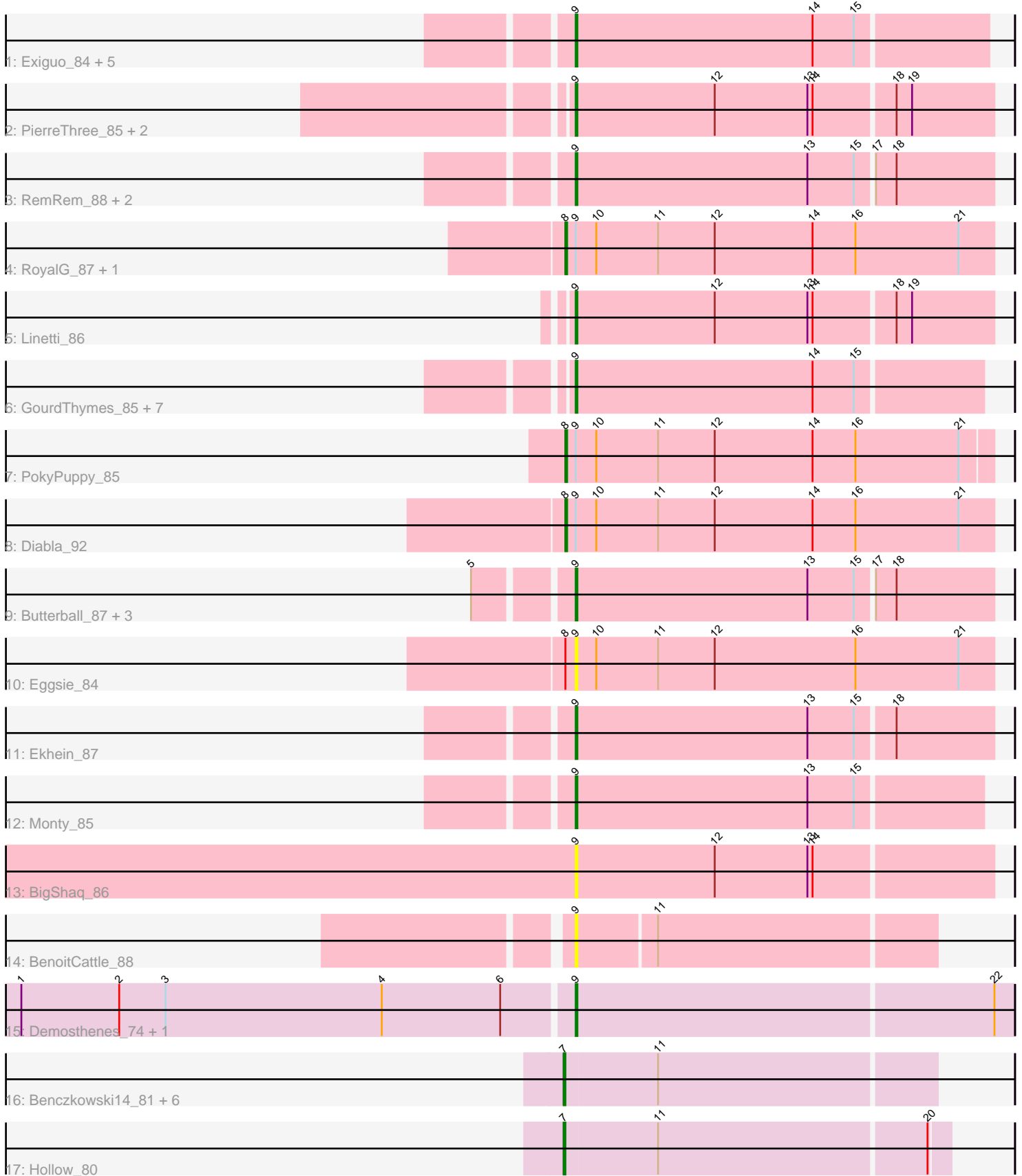


Pham 2388



Note: Tracks are now grouped by subcluster and scaled. Switching in subcluster is indicated by changes in track color. Track scale is now set by default to display the region 30 bp upstream of start 1 to 30 bp downstream of the last possible start. If this default region is judged to be packed too tightly with annotated starts, the track will be further scaled to only show that region of the ORF with annotated starts. This action will be indicated by adding "Zoomed" to the title. For starts, yellow indicates the location of called starts comprised solely of Glimmer/GeneMark auto-annotations, green indicates the location of called starts with at least 1 manual gene annotation.

Pham 2388 Report

This analysis was run 07/09/24 on database version 566.

Pham number 2388 has 44 members, 8 are drafts.

Phages represented in each track:

- Track 1 : Exiguo_84, Poland_90, Adgers_88, Breezic_86, John316_88, Msay19_89
- Track 2 : PierreThree_85, Chelms_86, Dakiti_87
- Track 3 : RemRem_88, Jellybones_86, Sombrero_86
- Track 4 : RoyalG_87, SteveFrench_86
- Track 5 : Linetti_86
- Track 6 : GourdThymes_85, Lizzo_85, Squibbles_85, Flakey_86, Barbochs_84, Hotorobo_87, Sam12_84, CathyBurgh_84
- Track 7 : PokyPuppy_85
- Track 8 : Diabla_92
- Track 9 : Butterball_87, FelixAlejandro_89, Boneham_88, BirksAndSocks_89
- Track 10 : Eggsie_84
- Track 11 : Ekhein_87
- Track 12 : Monty_85
- Track 13 : BigShaq_86
- Track 14 : BenoitCattle_88
- Track 15 : Demosthenes_74, ASerpRocky_74
- Track 16 : Benczkowski14_81, Kvothe_80, Katyusha_79, Niagara_80, Teech_78, Tredge_80, Teatealatte_81
- Track 17 : Hollow_80

Summary of Final Annotations (See graph section above for start numbers):

The start number called the most often in the published annotations is 9, it was called in 25 of the 36 non-draft genes in the pham.

Genes that call this "Most Annotated" start:

- ASerpRocky_74, Adgers_88, Barbochs_84, BenoitCattle_88, BigShaq_86, BirksAndSocks_89, Boneham_88, Breezic_86, Butterball_87, CathyBurgh_84, Chelms_86, Dakiti_87, Demosthenes_74, Eggsie_84, Ekhein_87, Exiguo_84, FelixAlejandro_89, Flakey_86, GourdThymes_85, Hotorobo_87, Jellybones_86, John316_88, Linetti_86, Lizzo_85, Monty_85, Msay19_89, PierreThree_85, Poland_90, RemRem_88, Sam12_84, Sombrero_86, Squibbles_85,

Genes that have the "Most Annotated" start but do not call it:

- Diabla_92, PokyPuppy_85, RoyalG_87, SteveFrench_86,

Genes that do not have the "Most Annotated" start:

- Benczkowski14_81, Hollow_80, Katyusha_79, Kvothe_80, Niagara_80, Teatealatte_81, Teech_78, Tredge_80,

Summary by start number:

Start 7:

- Found in 8 of 44 (18.2%) of genes in pham
- Manual Annotations of this start: 7 of 36
- Called 100.0% of time when present
- Phage (with cluster) where this start called: Benczkowski14_81 (CS4), Hollow_80 (CS4), Katyusha_79 (CS4), Kvothe_80 (CS4), Niagara_80 (CS4), Teatealatte_81 (CS4), Teech_78 (CS4), Tredge_80 (CS4),

Start 8:

- Found in 5 of 44 (11.4%) of genes in pham
- Manual Annotations of this start: 4 of 36
- Called 80.0% of time when present
- Phage (with cluster) where this start called: Diabla_92 (CS2), PokyPuppy_85 (CS2), RoyalG_87 (CS2), SteveFrench_86 (CS2),

Start 9:

- Found in 36 of 44 (81.8%) of genes in pham
- Manual Annotations of this start: 25 of 36
- Called 88.9% of time when present
- Phage (with cluster) where this start called: ASerpRocky_74 (CS4), Adgers_88 (CS2), Barbochs_84 (CS2), BenoitCattle_88 (CS2), BigShaq_86 (CS2), BirksAndSocks_89 (CS2), Boneham_88 (CS2), Breezic_86 (CS2), Butterball_87 (CS2), CathyBurgh_84 (CS2), Chelms_86 (CS2), Dakiti_87 (CS2), Demosthenes_74 (CS4), Eggsie_84 (CS2), Ekhein_87 (CS2), Exiguo_84 (CS2), FelixAlejandro_89 (CS2), Flakey_86 (CS2), GourdThymes_85 (CS2), Hotorobo_87 (CS2), Jellybones_86 (CS2), John316_88 (CS2), Linetti_86 (CS2), Lizzo_85 (CS2), Monty_85 (CS2), Msay19_89 (CS2), PierreThree_85 (CS2), Poland_90 (CS2), RemRem_88 (CS2), Sam12_84 (CS2), Sombrero_86 (CS2), Squibbles_85 (CS2),

Summary by clusters:

There are 2 clusters represented in this pham: CS4, CS2,

Info for manual annotations of cluster CS2:

- Start number 8 was manually annotated 4 times for cluster CS2.
- Start number 9 was manually annotated 23 times for cluster CS2.

Info for manual annotations of cluster CS4:

- Start number 7 was manually annotated 7 times for cluster CS4.
- Start number 9 was manually annotated 2 times for cluster CS4.

Gene Information:

Gene: ASerpRocky_74 Start: 62193, Stop: 61942, Start Num: 9
Candidate Starts for ASerpRocky_74:
(1, 62511), (2, 62454), (3, 62427), (4, 62301), (6, 62232), (Start: 9 @62193 has 25 MA's), (22, 61953),

Gene: Adgers_88 Start: 63649, Stop: 63413, Start Num: 9
Candidate Starts for Adgers_88:
(Start: 9 @63649 has 25 MA's), (14, 63511), (15, 63487),

Gene: Barbochs_84 Start: 62822, Stop: 62589, Start Num: 9
Candidate Starts for Barbochs_84:
(Start: 9 @62822 has 25 MA's), (14, 62684), (15, 62660),

Gene: Benczkowski14_81 Start: 63754, Stop: 63542, Start Num: 7
Candidate Starts for Benczkowski14_81:
(Start: 7 @63754 has 7 MA's), (11, 63700),

Gene: BenoitCattle_88 Start: 64337, Stop: 64134, Start Num: 9
Candidate Starts for BenoitCattle_88:
(Start: 9 @64337 has 25 MA's), (11, 64292),

Gene: BigShaq_86 Start: 64329, Stop: 64090, Start Num: 9
Candidate Starts for BigShaq_86:
(Start: 9 @64329 has 25 MA's), (12, 64248), (13, 64194), (14, 64191),

Gene: BirksAndSocks_89 Start: 65095, Stop: 64856, Start Num: 9
Candidate Starts for BirksAndSocks_89:
(5, 65146), (Start: 9 @65095 has 25 MA's), (13, 64960), (15, 64933), (17, 64924), (18, 64912),

Gene: Boneham_88 Start: 65020, Stop: 64781, Start Num: 9
Candidate Starts for Boneham_88:
(5, 65071), (Start: 9 @65020 has 25 MA's), (13, 64885), (15, 64858), (17, 64849), (18, 64837),

Gene: Breezic_86 Start: 63520, Stop: 63287, Start Num: 9
Candidate Starts for Breezic_86:
(Start: 9 @63520 has 25 MA's), (14, 63382), (15, 63358),

Gene: Butterball_87 Start: 65025, Stop: 64786, Start Num: 9
Candidate Starts for Butterball_87:
(5, 65076), (Start: 9 @65025 has 25 MA's), (13, 64890), (15, 64863), (17, 64854), (18, 64842),

Gene: CathyBurgh_84 Start: 63553, Stop: 63320, Start Num: 9
Candidate Starts for CathyBurgh_84:
(Start: 9 @63553 has 25 MA's), (14, 63415), (15, 63391),

Gene: Chelms_86 Start: 64220, Stop: 63981, Start Num: 9
Candidate Starts for Chelms_86:
(Start: 9 @64220 has 25 MA's), (12, 64139), (13, 64085), (14, 64082), (18, 64037), (19, 64028),

Gene: Dakiti_87 Start: 65017, Stop: 64778, Start Num: 9
Candidate Starts for Dakiti_87:
(Start: 9 @65017 has 25 MA's), (12, 64936), (13, 64882), (14, 64879), (18, 64834), (19, 64825),

Gene: Demosthenes_74 Start: 62215, Stop: 61964, Start Num: 9

Candidate Starts for Demosthenes_74:

(1, 62533), (2, 62476), (3, 62449), (4, 62323), (6, 62254), (Start: 9 @62215 has 25 MA's), (22, 61975),

Gene: Diabla_92 Start: 65397, Stop: 65149, Start Num: 8

Candidate Starts for Diabla_92:

(Start: 8 @65397 has 4 MA's), (Start: 9 @65391 has 25 MA's), (10, 65379), (11, 65343), (12, 65310), (14, 65253), (16, 65229), (21, 65169),

Gene: Eggsie_84 Start: 62834, Stop: 62592, Start Num: 9

Candidate Starts for Eggsie_84:

(Start: 8 @62840 has 4 MA's), (Start: 9 @62834 has 25 MA's), (10, 62822), (11, 62786), (12, 62753), (16, 62672), (21, 62612),

Gene: Ekhein_87 Start: 63564, Stop: 63325, Start Num: 9

Candidate Starts for Ekhein_87:

(Start: 9 @63564 has 25 MA's), (13, 63429), (15, 63402), (18, 63381),

Gene: Exiguo_84 Start: 62989, Stop: 62753, Start Num: 9

Candidate Starts for Exiguo_84:

(Start: 9 @62989 has 25 MA's), (14, 62851), (15, 62827),

Gene: FelixAlejandro_89 Start: 65541, Stop: 65302, Start Num: 9

Candidate Starts for FelixAlejandro_89:

(5, 65592), (Start: 9 @65541 has 25 MA's), (13, 65406), (15, 65379), (17, 65370), (18, 65358),

Gene: Flakey_86 Start: 64464, Stop: 64228, Start Num: 9

Candidate Starts for Flakey_86:

(Start: 9 @64464 has 25 MA's), (14, 64326), (15, 64302),

Gene: GourdThymes_85 Start: 63580, Stop: 63347, Start Num: 9

Candidate Starts for GourdThymes_85:

(Start: 9 @63580 has 25 MA's), (14, 63442), (15, 63418),

Gene: Hollow_80 Start: 63577, Stop: 63359, Start Num: 7

Candidate Starts for Hollow_80:

(Start: 7 @63577 has 7 MA's), (11, 63523), (20, 63370),

Gene: Hotorobo_87 Start: 64441, Stop: 64205, Start Num: 9

Candidate Starts for Hotorobo_87:

(Start: 9 @64441 has 25 MA's), (14, 64303), (15, 64279),

Gene: Jellybones_86 Start: 64735, Stop: 64496, Start Num: 9

Candidate Starts for Jellybones_86:

(Start: 9 @64735 has 25 MA's), (13, 64600), (15, 64573), (17, 64564), (18, 64552),

Gene: John316_88 Start: 64691, Stop: 64458, Start Num: 9

Candidate Starts for John316_88:

(Start: 9 @64691 has 25 MA's), (14, 64553), (15, 64529),

Gene: Katyusha_79 Start: 63754, Stop: 63542, Start Num: 7

Candidate Starts for Katyusha_79:

(Start: 7 @63754 has 7 MA's), (11, 63700),

Gene: Kvothe_80 Start: 63763, Stop: 63551, Start Num: 7
Candidate Starts for Kvothe_80:
(Start: 7 @63763 has 7 MA's), (11, 63709),

Gene: Linetti_86 Start: 65329, Stop: 65090, Start Num: 9
Candidate Starts for Linetti_86:
(Start: 9 @65329 has 25 MA's), (12, 65248), (13, 65194), (14, 65191), (18, 65146), (19, 65137),

Gene: Lizzo_85 Start: 63553, Stop: 63320, Start Num: 9
Candidate Starts for Lizzo_85:
(Start: 9 @63553 has 25 MA's), (14, 63415), (15, 63391),

Gene: Monty_85 Start: 63253, Stop: 63020, Start Num: 9
Candidate Starts for Monty_85:
(Start: 9 @63253 has 25 MA's), (13, 63118), (15, 63091),

Gene: Msay19_89 Start: 65333, Stop: 65097, Start Num: 9
Candidate Starts for Msay19_89:
(Start: 9 @65333 has 25 MA's), (14, 65195), (15, 65171),

Gene: Niagara_80 Start: 63687, Stop: 63475, Start Num: 7
Candidate Starts for Niagara_80:
(Start: 7 @63687 has 7 MA's), (11, 63633),

Gene: PierreThree_85 Start: 64648, Stop: 64409, Start Num: 9
Candidate Starts for PierreThree_85:
(Start: 9 @64648 has 25 MA's), (12, 64567), (13, 64513), (14, 64510), (18, 64465), (19, 64456),

Gene: PokyPuppy_85 Start: 64551, Stop: 64306, Start Num: 8
Candidate Starts for PokyPuppy_85:
(Start: 8 @64551 has 4 MA's), (Start: 9 @64545 has 25 MA's), (10, 64533), (11, 64497), (12, 64464), (14, 64407), (16, 64383), (21, 64323),

Gene: Poland_90 Start: 65312, Stop: 65076, Start Num: 9
Candidate Starts for Poland_90:
(Start: 9 @65312 has 25 MA's), (14, 65174), (15, 65150),

Gene: RemRem_88 Start: 63547, Stop: 63308, Start Num: 9
Candidate Starts for RemRem_88:
(Start: 9 @63547 has 25 MA's), (13, 63412), (15, 63385), (17, 63376), (18, 63364),

Gene: RoyalG_87 Start: 64148, Stop: 63900, Start Num: 8
Candidate Starts for RoyalG_87:
(Start: 8 @64148 has 4 MA's), (Start: 9 @64142 has 25 MA's), (10, 64130), (11, 64094), (12, 64061), (14, 64004), (16, 63980), (21, 63920),

Gene: Sam12_84 Start: 62989, Stop: 62753, Start Num: 9
Candidate Starts for Sam12_84:
(Start: 9 @62989 has 25 MA's), (14, 62851), (15, 62827),

Gene: Sombrero_86 Start: 63617, Stop: 63378, Start Num: 9
Candidate Starts for Sombrero_86:
(Start: 9 @63617 has 25 MA's), (13, 63482), (15, 63455), (17, 63446), (18, 63434),

Gene: Squibbles_85 Start: 64070, Stop: 63837, Start Num: 9

Candidate Starts for Squibbles_85:

(Start: 9 @64070 has 25 MA's), (14, 63932), (15, 63908),

Gene: SteveFrench_86 Start: 64388, Stop: 64140, Start Num: 8

Candidate Starts for SteveFrench_86:

(Start: 8 @64388 has 4 MA's), (Start: 9 @64382 has 25 MA's), (10, 64370), (11, 64334), (12, 64301), (14, 64244), (16, 64220), (21, 64160),

Gene: Teatealatte_81 Start: 63584, Stop: 63372, Start Num: 7

Candidate Starts for Teatealatte_81:

(Start: 7 @63584 has 7 MA's), (11, 63530),

Gene: Teech_78 Start: 63400, Stop: 63188, Start Num: 7

Candidate Starts for Teech_78:

(Start: 7 @63400 has 7 MA's), (11, 63346),

Gene: Tredge_80 Start: 63584, Stop: 63372, Start Num: 7

Candidate Starts for Tredge_80:

(Start: 7 @63584 has 7 MA's), (11, 63530),