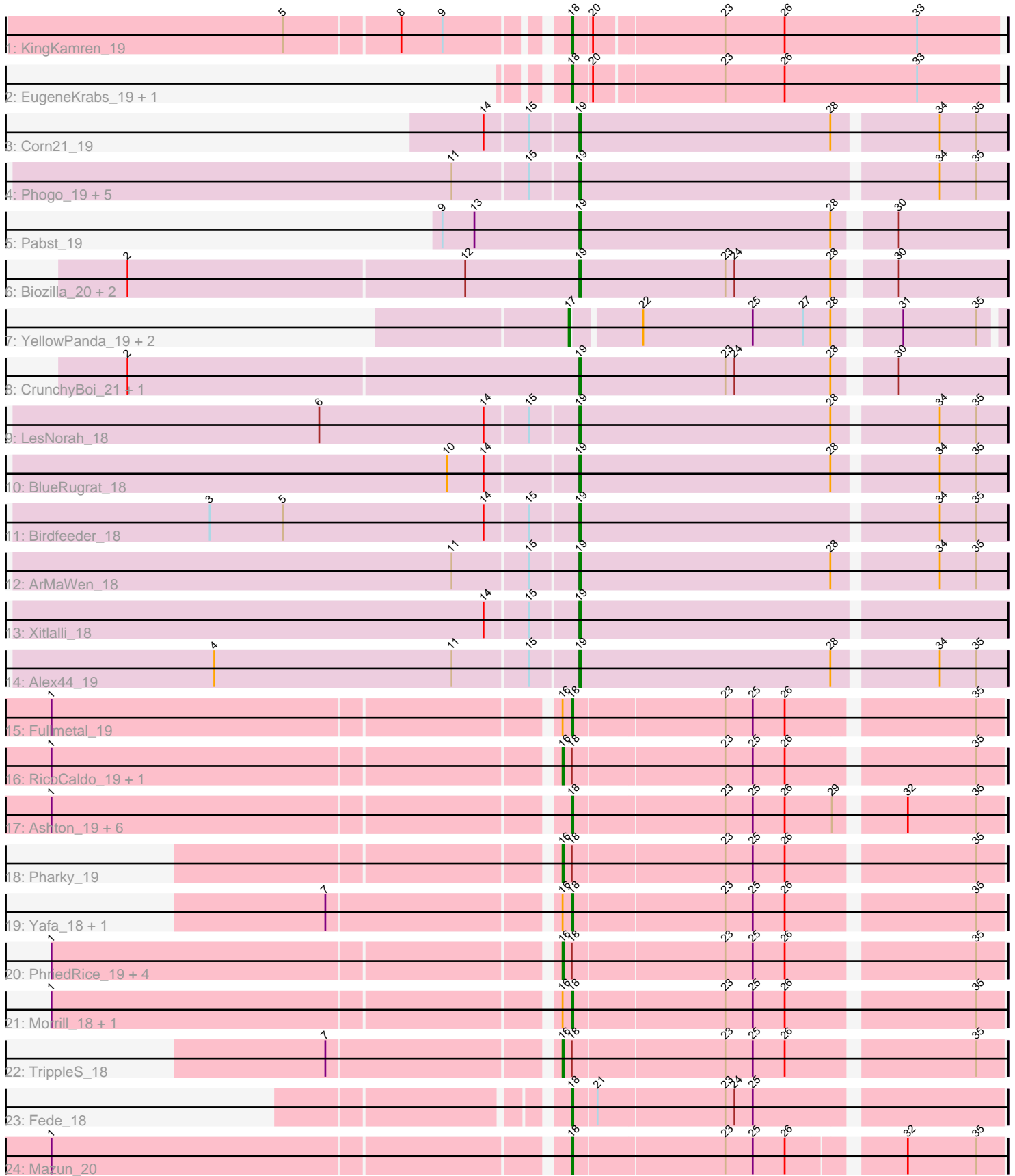


Pham 2430



Note: Tracks are now grouped by subcluster and scaled. Switching in subcluster is indicated by changes in track color. Track scale is now set by default to display the region 30 bp upstream of start 1 to 30 bp downstream of the last possible start. If this default region is judged to be packed too tightly with annotated starts, the track will be further scaled to only show that region of the ORF with annotated starts. This action will be indicated by adding "Zoomed" to the title. For starts, yellow indicates the location of called starts comprised solely of Glimmer/GeneMark auto-annotations, green indicates the location of called starts with at least 1 manual gene annotation.

Pham 2430 Report

This analysis was run 07/09/24 on database version 566.

Pham number 2430 has 48 members, 5 are drafts.

Phages represented in each track:

- Track 1 : KingKamren_19
- Track 2 : EugeneKrabs_19, Zhengyi_19
- Track 3 : Corn21_19
- Track 4 : Phogo_19, Stormbreaker_18, Unphazed_19, DumpQuist_18, LilyLou_19, Dashyla_18
- Track 5 : Pabst_19
- Track 6 : Biozilla_20, HitchHiker_21, Oatly_19
- Track 7 : YellowPanda_19, Wesak_18, TinyTimothy_18
- Track 8 : CrunchyBoi_21, PineapplePluto_21
- Track 9 : LesNorah_18
- Track 10 : BlueRugrat_18
- Track 11 : Birdfeeder_18
- Track 12 : ArMaWen_18
- Track 13 : Xitlalli_18
- Track 14 : Alex44_19
- Track 15 : Fullmetal_19
- Track 16 : RicoCaldo_19, Moleficent_19
- Track 17 : Ashton_19, AloeVera_19, Barroma_18, JordanFarm_19, Akoni_19, Waterlily_19, Truong_19
- Track 18 : Pharky_19
- Track 19 : Yafa_18, Atraxi_18
- Track 20 : PhriedRice_19, StagePhright_19, Astartes_19, Phractured_19, Phedro_19
- Track 21 : Morrill_18, ThirteenKH_18
- Track 22 : TrippleS_18
- Track 23 : Fede_18
- Track 24 : Mazun_20

Summary of Final Annotations (See graph section above for start numbers):

The start number called the most often in the published annotations is 19, it was called in 17 of the 43 non-draft genes in the pham.

Genes that call this "Most Annotated" start:

- Alex44_19, ArMaWen_18, Biozilla_20, Birdfeeder_18, BlueRugrat_18, Corn21_19, CrunchyBoi_21, Dashyla_18, DumpQuist_18, HitchHiker_21, LesNorah_18, LilyLou_19, Oatly_19, Pabst_19, Phogo_19, PineapplePluto_21, Stormbreaker_18, Unphazed_19, Xitlalli_18,

Genes that have the "Most Annotated" start but do not call it:

-

Genes that do not have the "Most Annotated" start:

- Akoni_19, AloeVera_19, Ashton_19, Astartes_19, Atraxi_18, Barroma_18, EugeneKrabs_19, Fede_18, Fullmetal_19, JordanFarm_19, KingKamren_19, Mazun_20, Moleficent_19, Morrill_18, Pharky_19, Phedro_19, Phracted_19, PhriedRice_19, RicoCaldo_19, StagePhright_19, ThirteenKH_18, TinyTimothy_18, TrippleS_18, Truong_19, Waterlily_19, Wesak_18, Yafa_18, YellowPanda_19, Zhengyi_19,

Summary by start number:

Start 16:

- Found in 14 of 48 (29.2%) of genes in pham
- Manual Annotations of this start: 9 of 43
- Called 64.3% of time when present
- Phage (with cluster) where this start called: Astartes_19 (EK2), Moleficent_19 (EK2), Pharky_19 (EK2), Phedro_19 (EK2), Phracted_19 (EK2), PhriedRice_19 (EK2), RicoCaldo_19 (EK2), StagePhright_19 (EK2), TrippleS_18 (EK2),

Start 17:

- Found in 3 of 48 (6.2%) of genes in pham
- Manual Annotations of this start: 3 of 43
- Called 100.0% of time when present
- Phage (with cluster) where this start called: TinyTimothy_18 (EK1), Wesak_18 (EK1), YellowPanda_19 (EK1),

Start 18:

- Found in 26 of 48 (54.2%) of genes in pham
- Manual Annotations of this start: 14 of 43
- Called 65.4% of time when present
- Phage (with cluster) where this start called: Akoni_19 (EK2), AloeVera_19 (EK2), Ashton_19 (EK2), Atraxi_18 (EK2), Barroma_18 (EK2), EugeneKrabs_19 (EK), Fede_18 (EK2), Fullmetal_19 (EK2), JordanFarm_19 (EK2), KingKamren_19 (EK), Mazun_20 (EK2), Morrill_18 (EK2), ThirteenKH_18 (EK2), Truong_19 (EK2), Waterlily_19 (EK2), Yafa_18 (EK2), Zhengyi_19 (EK),

Start 19:

- Found in 19 of 48 (39.6%) of genes in pham
- Manual Annotations of this start: 17 of 43
- Called 100.0% of time when present
- Phage (with cluster) where this start called: Alex44_19 (EK1), ArMaWen_18 (EK1), Biozilla_20 (EK1), Birdfeeder_18 (EK1), BlueRugrat_18 (EK1), Corn21_19 (EK1), CrunchyBoi_21 (EK1), Dashyla_18 (EK1), DumpQuist_18 (EK1), HitchHiker_21 (EK1), LesNorah_18 (EK1), LilyLou_19 (EK1), Oatly_19 (EK1), Pabst_19 (EK1), Phogo_19 (EK1), PineapplePluto_21 (EK1), Stormbreaker_18 (EK1), Unphazed_19 (EK1), Xitlalli_18 (EK1),

Summary by clusters:

There are 3 clusters represented in this pham: EK, EK2, EK1,

Info for manual annotations of cluster EK:

- Start number 18 was manually annotated 3 times for cluster EK.

Info for manual annotations of cluster EK1:

- Start number 17 was manually annotated 3 times for cluster EK1.
- Start number 19 was manually annotated 17 times for cluster EK1.

Info for manual annotations of cluster EK2:

- Start number 16 was manually annotated 9 times for cluster EK2.
- Start number 18 was manually annotated 11 times for cluster EK2.

Gene Information:

Gene: Akoni_19 Start: 12990, Stop: 12724, Start Num: 18

Candidate Starts for Akoni_19:

(1, 13314), (Start: 18 @12990 has 14 MA's), (23, 12894), (25, 12876), (26, 12855), (29, 12825), (32, 12786), (35, 12741),

Gene: Alex44_19 Start: 12802, Stop: 12530, Start Num: 19

Candidate Starts for Alex44_19:

(4, 13036), (11, 12880), (15, 12832), (Start: 19 @12802 has 17 MA's), (28, 12637), (34, 12574), (35, 12550),

Gene: AloeVera_19 Start: 12990, Stop: 12724, Start Num: 18

Candidate Starts for AloeVera_19:

(1, 13314), (Start: 18 @12990 has 14 MA's), (23, 12894), (25, 12876), (26, 12855), (29, 12825), (32, 12786), (35, 12741),

Gene: ArMaWen_18 Start: 12386, Stop: 12114, Start Num: 19

Candidate Starts for ArMaWen_18:

(11, 12464), (15, 12416), (Start: 19 @12386 has 17 MA's), (28, 12221), (34, 12158), (35, 12134),

Gene: Ashton_19 Start: 12994, Stop: 12728, Start Num: 18

Candidate Starts for Ashton_19:

(1, 13318), (Start: 18 @12994 has 14 MA's), (23, 12898), (25, 12880), (26, 12859), (29, 12829), (32, 12790), (35, 12745),

Gene: Astartes_19 Start: 13083, Stop: 12811, Start Num: 16

Candidate Starts for Astartes_19:

(1, 13401), (Start: 16 @13083 has 9 MA's), (Start: 18 @13077 has 14 MA's), (23, 12981), (25, 12963), (26, 12942), (35, 12828),

Gene: Atraxi_18 Start: 12833, Stop: 12567, Start Num: 18

Candidate Starts for Atraxi_18:

(7, 12980), (Start: 16 @12839 has 9 MA's), (Start: 18 @12833 has 14 MA's), (23, 12737), (25, 12719), (26, 12698), (35, 12584),

Gene: Barroma_18 Start: 12990, Stop: 12724, Start Num: 18

Candidate Starts for Barroma_18:

(1, 13314), (Start: 18 @12990 has 14 MA's), (23, 12894), (25, 12876), (26, 12855), (29, 12825), (32, 12786), (35, 12741),

Gene: Biozilla_20 Start: 13222, Stop: 12953, Start Num: 19

Candidate Starts for Biozilla_20:

(2, 13516), (12, 13297), (Start: 19 @13222 has 17 MA's), (23, 13126), (24, 13120), (28, 13057), (30, 13024),

Gene: Birdfeeder_18 Start: 12749, Stop: 12477, Start Num: 19

Candidate Starts for Birdfeeder_18:

(3, 12986), (5, 12938), (14, 12806), (15, 12779), (Start: 19 @12749 has 17 MA's), (34, 12521), (35, 12497),

Gene: BlueRugrat_18 Start: 12820, Stop: 12548, Start Num: 19

Candidate Starts for BlueRugrat_18:

(10, 12901), (14, 12877), (Start: 19 @12820 has 17 MA's), (28, 12655), (34, 12592), (35, 12568),

Gene: Corn21_19 Start: 13125, Stop: 12853, Start Num: 19

Candidate Starts for Corn21_19:

(14, 13182), (15, 13155), (Start: 19 @13125 has 17 MA's), (28, 12960), (34, 12897), (35, 12873),

Gene: CrunchyBoi_21 Start: 13171, Stop: 12902, Start Num: 19

Candidate Starts for CrunchyBoi_21:

(2, 13465), (Start: 19 @13171 has 17 MA's), (23, 13075), (24, 13069), (28, 13006), (30, 12973),

Gene: Dashyla_18 Start: 12399, Stop: 12127, Start Num: 19

Candidate Starts for Dashyla_18:

(11, 12477), (15, 12429), (Start: 19 @12399 has 17 MA's), (34, 12171), (35, 12147),

Gene: DumpQuist_18 Start: 12389, Stop: 12117, Start Num: 19

Candidate Starts for DumpQuist_18:

(11, 12467), (15, 12419), (Start: 19 @12389 has 17 MA's), (34, 12161), (35, 12137),

Gene: EugeneKrabs_19 Start: 13655, Stop: 13383, Start Num: 18

Candidate Starts for EugeneKrabs_19:

(Start: 18 @13655 has 14 MA's), (20, 13643), (23, 13562), (26, 13523), (33, 13436),

Gene: Fede_18 Start: 12227, Stop: 11961, Start Num: 18

Candidate Starts for Fede_18:

(Start: 18 @12227 has 14 MA's), (21, 12212), (23, 12131), (24, 12125), (25, 12113),

Gene: Fullmetal_19 Start: 13075, Stop: 12809, Start Num: 18

Candidate Starts for Fullmetal_19:

(1, 13399), (Start: 16 @13081 has 9 MA's), (Start: 18 @13075 has 14 MA's), (23, 12979), (25, 12961), (26, 12940), (35, 12826),

Gene: HitchHiker_21 Start: 13222, Stop: 12953, Start Num: 19

Candidate Starts for HitchHiker_21:

(2, 13516), (12, 13297), (Start: 19 @13222 has 17 MA's), (23, 13126), (24, 13120), (28, 13057), (30, 13024),

Gene: JordanFarm_19 Start: 12990, Stop: 12724, Start Num: 18

Candidate Starts for JordanFarm_19:

(1, 13314), (Start: 18 @12990 has 14 MA's), (23, 12894), (25, 12876), (26, 12855), (29, 12825), (32, 12786), (35, 12741),

Gene: KingKamren_19 Start: 13559, Stop: 13287, Start Num: 18

Candidate Starts for KingKamren_19:

(5, 13724), (8, 13652), (9, 13625), (Start: 18 @13559 has 14 MA's), (20, 13547), (23, 13466), (26, 13427), (33, 13340),

Gene: LesNorah_18 Start: 12913, Stop: 12641, Start Num: 19

Candidate Starts for LesNorah_18:

(6, 13078), (14, 12970), (15, 12943), (Start: 19 @12913 has 17 MA's), (28, 12748), (34, 12685), (35, 12661),

Gene: LilyLou_19 Start: 12763, Stop: 12491, Start Num: 19

Candidate Starts for LilyLou_19:

(11, 12841), (15, 12793), (Start: 19 @12763 has 17 MA's), (34, 12535), (35, 12511),

Gene: Mazun_20 Start: 13262, Stop: 12999, Start Num: 18

Candidate Starts for Mazun_20:

(1, 13586), (Start: 18 @13262 has 14 MA's), (23, 13166), (25, 13148), (26, 13127), (32, 13061), (35, 13016),

Gene: Moleficent_19 Start: 13078, Stop: 12806, Start Num: 16

Candidate Starts for Moleficent_19:

(1, 13396), (Start: 16 @13078 has 9 MA's), (Start: 18 @13072 has 14 MA's), (23, 12976), (25, 12958), (26, 12937), (35, 12823),

Gene: Morrill_18 Start: 12813, Stop: 12547, Start Num: 18

Candidate Starts for Morrill_18:

(1, 13137), (Start: 16 @12819 has 9 MA's), (Start: 18 @12813 has 14 MA's), (23, 12717), (25, 12699), (26, 12678), (35, 12564),

Gene: Oatly_19 Start: 12636, Stop: 12367, Start Num: 19

Candidate Starts for Oatly_19:

(2, 12930), (12, 12711), (Start: 19 @12636 has 17 MA's), (23, 12540), (24, 12534), (28, 12471), (30, 12438),

Gene: Pabst_19 Start: 12880, Stop: 12611, Start Num: 19

Candidate Starts for Pabst_19:

(9, 12970), (13, 12949), (Start: 19 @12880 has 17 MA's), (28, 12715), (30, 12682),

Gene: Pharky_19 Start: 13041, Stop: 12769, Start Num: 16

Candidate Starts for Pharky_19:

(Start: 16 @13041 has 9 MA's), (Start: 18 @13035 has 14 MA's), (23, 12939), (25, 12921), (26, 12900), (35, 12786),

Gene: Phedro_19 Start: 13041, Stop: 12769, Start Num: 16

Candidate Starts for Phedro_19:

(1, 13359), (Start: 16 @13041 has 9 MA's), (Start: 18 @13035 has 14 MA's), (23, 12939), (25, 12921), (26, 12900), (35, 12786),

Gene: Phogo_19 Start: 12595, Stop: 12323, Start Num: 19

Candidate Starts for Phogo_19:

(11, 12673), (15, 12625), (Start: 19 @12595 has 17 MA's), (34, 12367), (35, 12343),

Gene: Phractured_19 Start: 13041, Stop: 12769, Start Num: 16

Candidate Starts for Phractured_19:

(1, 13359), (Start: 16 @13041 has 9 MA's), (Start: 18 @13035 has 14 MA's), (23, 12939), (25, 12921), (26, 12900), (35, 12786),

Gene: PhriedRice_19 Start: 13052, Stop: 12780, Start Num: 16

Candidate Starts for PhriedRice_19:

(1, 13370), (Start: 16 @13052 has 9 MA's), (Start: 18 @13046 has 14 MA's), (23, 12950), (25, 12932), (26, 12911), (35, 12797),

Gene: PineapplePluto_21 Start: 13180, Stop: 12911, Start Num: 19

Candidate Starts for PineapplePluto_21:

(2, 13474), (Start: 19 @13180 has 17 MA's), (23, 13084), (24, 13078), (28, 13015), (30, 12982),

Gene: RicoCaldo_19 Start: 13073, Stop: 12801, Start Num: 16

Candidate Starts for RicoCaldo_19:

(1, 13391), (Start: 16 @13073 has 9 MA's), (Start: 18 @13067 has 14 MA's), (23, 12971), (25, 12953), (26, 12932), (35, 12818),

Gene: StagePhright_19 Start: 13041, Stop: 12769, Start Num: 16

Candidate Starts for StagePhright_19:

(1, 13359), (Start: 16 @13041 has 9 MA's), (Start: 18 @13035 has 14 MA's), (23, 12939), (25, 12921), (26, 12900), (35, 12786),

Gene: Stormbreaker_18 Start: 12725, Stop: 12453, Start Num: 19

Candidate Starts for Stormbreaker_18:

(11, 12803), (15, 12755), (Start: 19 @12725 has 17 MA's), (34, 12497), (35, 12473),

Gene: ThirteenKH_18 Start: 12812, Stop: 12546, Start Num: 18

Candidate Starts for ThirteenKH_18:

(1, 13136), (Start: 16 @12818 has 9 MA's), (Start: 18 @12812 has 14 MA's), (23, 12716), (25, 12698), (26, 12677), (35, 12563),

Gene: TinyTimothy_18 Start: 12515, Stop: 12252, Start Num: 17

Candidate Starts for TinyTimothy_18:

(Start: 17 @12515 has 3 MA's), (22, 12473), (25, 12401), (27, 12368), (28, 12350), (31, 12314), (35, 12266),

Gene: TrippleS_18 Start: 12825, Stop: 12553, Start Num: 16

Candidate Starts for TrippleS_18:

(7, 12966), (Start: 16 @12825 has 9 MA's), (Start: 18 @12819 has 14 MA's), (23, 12723), (25, 12705), (26, 12684), (35, 12570),

Gene: Truong_19 Start: 12990, Stop: 12724, Start Num: 18

Candidate Starts for Truong_19:

(1, 13314), (Start: 18 @12990 has 14 MA's), (23, 12894), (25, 12876), (26, 12855), (29, 12825), (32, 12786), (35, 12741),

Gene: Unphazed_19 Start: 12625, Stop: 12353, Start Num: 19

Candidate Starts for Unphazed_19:

(11, 12703), (15, 12655), (Start: 19 @12625 has 17 MA's), (34, 12397), (35, 12373),

Gene: Waterlily_19 Start: 13032, Stop: 12766, Start Num: 18

Candidate Starts for Waterlily_19:

(1, 13356), (Start: 18 @13032 has 14 MA's), (23, 12936), (25, 12918), (26, 12897), (29, 12867), (32, 12828), (35, 12783),

Gene: Wesak_18 Start: 12357, Stop: 12094, Start Num: 17

Candidate Starts for Wesak_18:

(Start: 17 @12357 has 3 MA's), (22, 12315), (25, 12243), (27, 12210), (28, 12192), (31, 12156), (35, 12108),

Gene: Xitlalli_18 Start: 12968, Stop: 12696, Start Num: 19

Candidate Starts for Xitlalli_18:

(14, 13025), (15, 12998), (Start: 19 @12968 has 17 MA's),

Gene: Yafa_18 Start: 12835, Stop: 12569, Start Num: 18

Candidate Starts for Yafa_18:

(7, 12982), (Start: 16 @12841 has 9 MA's), (Start: 18 @12835 has 14 MA's), (23, 12739), (25, 12721), (26, 12700), (35, 12586),

Gene: YellowPanda_19 Start: 12238, Stop: 11975, Start Num: 17

Candidate Starts for YellowPanda_19:

(Start: 17 @12238 has 3 MA's), (22, 12196), (25, 12124), (27, 12091), (28, 12073), (31, 12037), (35, 11989),

Gene: Zhengyi_19 Start: 13674, Stop: 13402, Start Num: 18

Candidate Starts for Zhengyi_19:

(Start: 18 @13674 has 14 MA's), (20, 13662), (23, 13581), (26, 13542), (33, 13455),