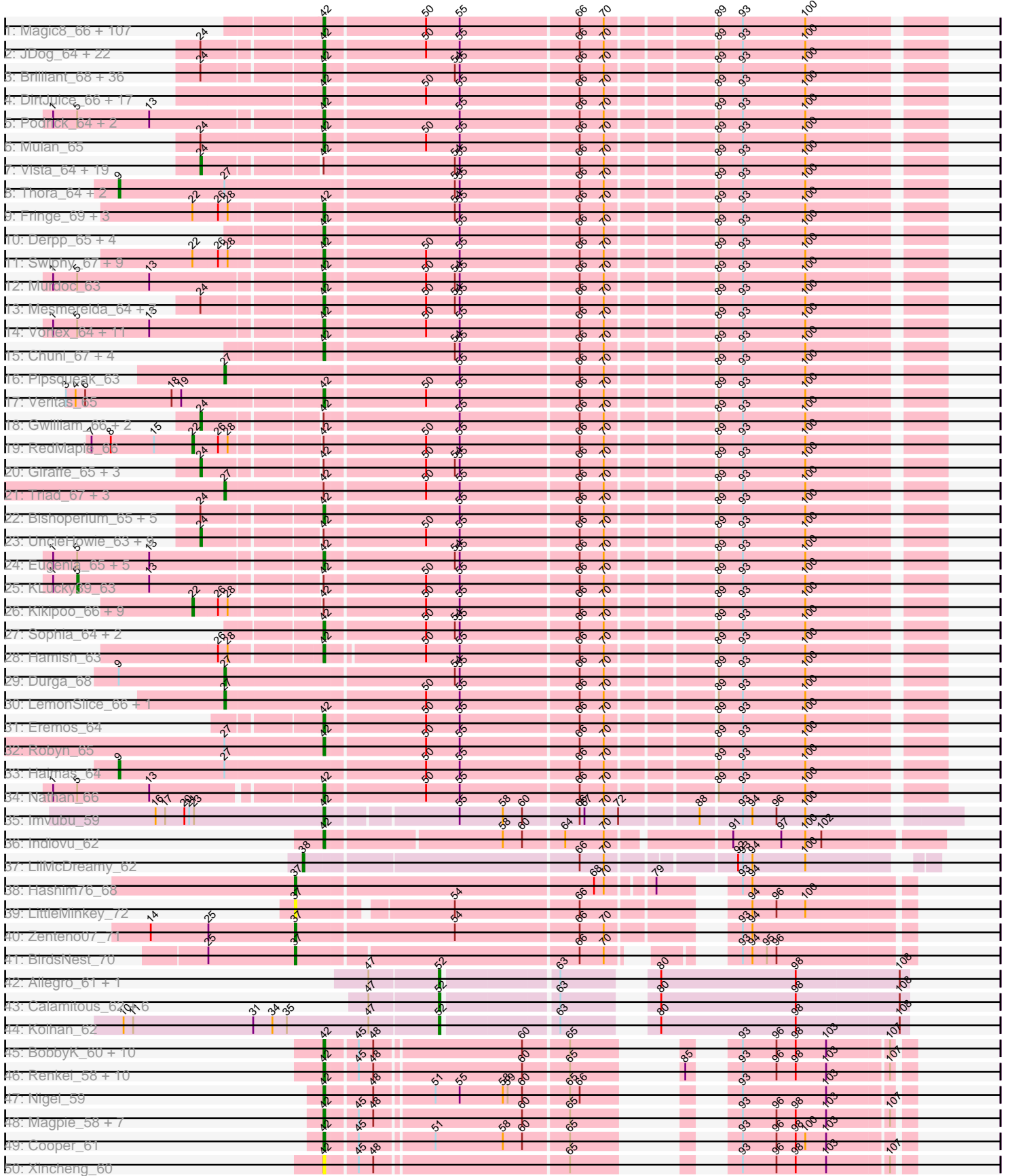
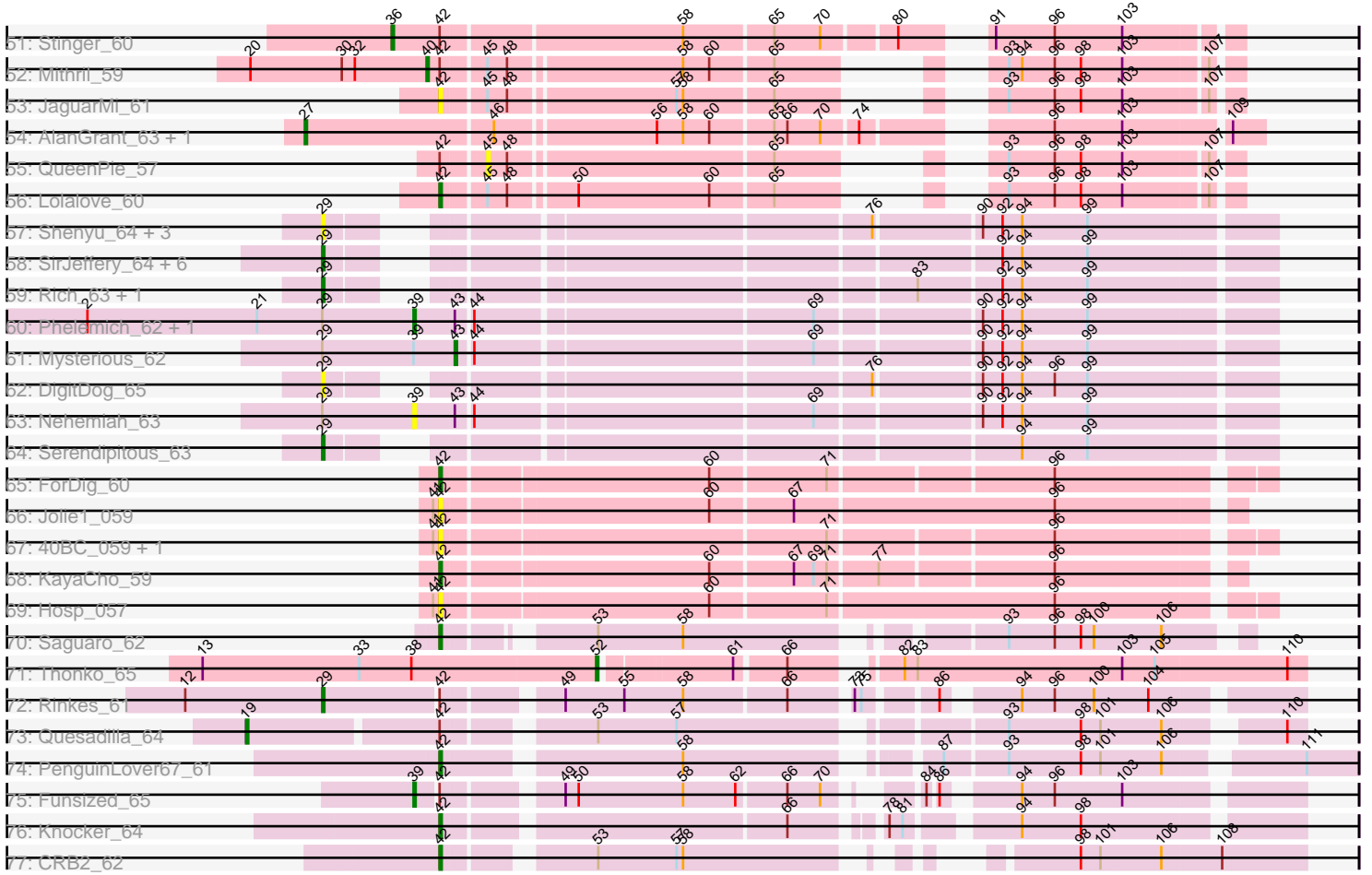


Pham 305997



Pham 305997



Note: Tracks are now grouped by subcluster and scaled. Switching in subcluster is indicated by changes in track color. Track scale is now set by default to display the region 30 bp upstream of start 1 to 30 bp downstream of the last possible start. If this default region is judged to be packed too tightly with annotated starts, the track will be further scaled to only show that region of the ORF with annotated starts. This action will be indicated by adding "Zoomed" to the title. For starts, yellow indicates the location of called starts comprised solely of Glimmer/GeneMark auto-annotations, green indicates the location of called starts with at least 1 manual gene annotation.

Pham 305997 Report

This analysis was run 06/20/26 on database version 651.

Pham number 305997 has 406 members, 54 are drafts.

Phages represented in each track:

- Track 1 : Magic8_66, Weher20_63, FriarPreacher_64, Pherdinand_66, Soto_63, Basato_65, Zonia_66, Cher_65, Aelin_65, OSmaximus_66, Plata_66, Vivaldi_66, Jiminy_66, MichaelPhcott_64, Iridoclysis_65, Larson_69, JakeO_66, Manad_64, MitKao_65, Maru_65, Pinkman_65, BlackStallion_66, FluffyNinja_66, Emiris_67, Schadenfreude_65, ImtiyazSitla_66, Yoshand_66, Ashraf_66, Inchworm_67, Karn_66, AngelCake_64, Phergie_66, Cobra_66, DoOn_70, Frankicide_63, Mosaic_63, Dingo_63, LeeLot_65, Taraxa_67, KlimbOn_65, Doddsville_64, Lopsy_63, Etaye_65, Chorkpop_65, Dati_63, Duggie_65, Kailash_64, Schueller_65, Mana_64, Daffy_64, Melc17_63, BlacksBerry_66, Antonia_64, MiniBoss_63, Cornobble_64, LostAndPhound_65, AbsoluteMadLad_65, PhrankReynolds_65, MelsMeow_65, Legolas_67, GeneCoco_66, Wallhey_66, Phareon_64, Inverness_64, Swish_66, Morgushi_64, PhrodoBaggins_66, CheetO_65, LasagnaCat_67, KingTut_57, Katniss_66, PhenghisKhan_66, Roliet_63, SassyCat97_64, Puhltonio_64, AltPhacts_64, Held_64, Potter_63, Hartsy_64, Iridessa_66, Fozzie_65, GreenChile_66, SallyH_68, BlueHusk_67, Mag7_64, Riverton_65, CampRoach_66, Tooj_63, Nova1_66, HSavage_63, TallGrassMM_64, HighStump_67, Apizium_64, Phleuron_64, Kwksand96_66, Flake_66, MRabcd_65, Mikota_63, EmGer13_66, Sheila_62, OneBrain_68, Craff_68, Kloppinator_66, Maskar_66, Aleia_66, KingVeVeVe_64, Struggle_66, BatteryCK_64
- Track 2 : JDog_64, Zelda_66, Orwigg_64, Banjo_64, Chipette_65, BoogieWoogie_66, Thunderbird_65, Childish_64, Longacauda_66, HogWash_65, Slatt_66, DaddyDaniels_67, Riggan_66, Squiggle_65, Vaticameos_62, HenryJackson_65, Kahve_65, LeiMonet_68, Jiraiya_66, Cannibal_65, Kimbrough_66, Daka_68, Caspiboi_65
- Track 3 : Brilliant_68, LuckyMarjie_63, Tomlarah_66, Pacifista_64, Plmatters_64, Gareth_65, Simielle_65, DelRivs_63, Waterdiva_65, Selr12_66, Rimu_65, Cornbread_64, Grand2040_64, Altwerkus_63, Skippy_66, Hocus_64, Badfish_65, Kwadwo_64, Mecca_65, Scrick_65, Quisquilliae_66, Bluephacebaby_65, Beaglebox_64, Jillium_65, Timmi_64, Omniscient_66, Ricotta_65, Soile_66, Orfeu_64, Anderson_66, Khan1_66, FremontTroll_65, Gophee_66, Toni_65, Burr_65, Zaider_66, MrPhizzler_68
- Track 4 : DirtJuice_66, EmpTee_64, Prickles_67, SDcharge11_65, Pops_63, Olive_65, ProfessorX_64, Virapocalypse_66, Olak_64, Spartan300_65, Sigman_65, JacAttac_66, Phunky_63, FugateOSU_66, ShiVal_63, JangoPhett_65, Dione_63, Valjean_65
- Track 5 : Podrick_64, Buckeye_65, Matalotodo_64
- Track 6 : Mulan_65

- Track 7 : Vista_64, PG1_65, Megamind20_66, Chah_66, Serpentine_0065, Orion_66, Numberten_64, ThreeOh3D2_66, Mcshane_64, Roy17_63, Hertubise_64, ABU_65, Lulumae_62, Scoot17C_65, Serendipity_64, PhatCats2014_65, Piglet_0065, Aonishiki_65, ShadowBud_65, Oosterbaan_64
- Track 8 : Thora_64, Oline_65, Trypo_67
- Track 9 : Fringe_69, Freya_62, Lulwa_63, Lasso_65
- Track 10 : Derpp_65, CharlieGBrown_64, TyrionL_66, Labeouficaum_66, Placalicious_66
- Track 11 : Swiphy_67, Boehler_65, Windsor_65, Coletti_68, Crownjwl_64, Horchata_63, Keitherie_67, Roscoe_66, PhatLouie_67, Adriana_67
- Track 12 : Murdoc_63
- Track 13 : Mesmerelda_64, Nicole21_66, NiaNia_67, Haleema_64, Andre_67, Dice_64, Nyala_64, Cosmolli16_66
- Track 14 : Vortex_64, Nacho_0067, OliverWalter_63, ElvisPhasley_66, Surely_65, Newman_63, Chunky_64, Squid_64, Gwennie1_63, Happabalu_64, Usavi_65, TomBombadil_65
- Track 15 : Chuni_67, PinheadLarry_64, TooFast2Furius_65, Harvey_63, Mesh1_66
- Track 16 : Pipsqueak_63
- Track 17 : Veritas_65
- Track 18 : Gwilliam_66, UAch1_65, Hetaeria_64
- Track 19 : RedMaple_66
- Track 20 : Giraffe_65, Charles1_66, PallasAthena_67, Telesworld_63
- Track 21 : Triad_67, Vaishali24_64, Carthage_64, Lehmann_66
- Track 22 : Bishoperium_65, QueenBeane_65, True_64, CamL_65, Samaymay_65, Lumine_66
- Track 23 : UncleHowie_63, SilverBell_66, Mutante_65, DoesntMatter_62, Lego3393_63, Megatron_65, Xavier_64, Phamished_67, Morty_66, DuchessDung_65
- Track 24 : Eugenia_65, Gyarad_0064, Suffolk_63, Fang_66, Phipps_65, Hekos_63
- Track 25 : KLucky39_63
- Track 26 : Kikipoo_66, Chute_66, Chaelin_66, Virgeve_64, Colbert_63, IsaacEli_66, RedRaider89_65, Jesabah_67, FleetyMac_68, SirBeauregard_66
- Track 27 : Sophia_64, Solosis_64, DonSanchon_62
- Track 28 : Hamish_63
- Track 29 : Durga_68
- Track 30 : LemonSlice_66, YouGoGlencoco_66
- Track 31 : Eremos_64
- Track 32 : Robyn_65
- Track 33 : Haimas_64
- Track 34 : Nathan_66
- Track 35 : Imvubu_59
- Track 36 : Indlovu_62
- Track 37 : LilMcDreamy_62
- Track 38 : Hashim76_68
- Track 39 : LittleMinkey_72
- Track 40 : Zenteno07_71
- Track 41 : BirdsNest_70
- Track 42 : Allegro_61, Kaleb_61
- Track 43 : Calamitous_62, Faze9_60, Coffee_61, LilSmirk_61, Tres_61, Lars_62, MasterPo_62
- Track 44 : Kolhan_62
- Track 45 : BobbyK_60, Austelle_60, BrownCNA_61, ChrisnMich_59, Hydro_59, Heath_58, Prince_59, Apex_60, JoyceMaria_59, Waleliano_59, VioletZ_61

- Track 46 : Renkei_58, Hally898_58, Ahwei_58, Nanao_58, Lambano_58, Epah_58, GinPorsche_59, Antihero_58, Poster_58, LittleDigger_58, JAMaL_59
- Track 47 : Nigel_59
- Track 48 : Magpie_58, RawrgerThat_60, Mudslide_59, Frederick_60, Hangman_59, Fanaw_58, Zemanar_60, Fortunato_60
- Track 49 : Cooper_61
- Track 50 : Xincheng_60
- Track 51 : Stinger_60
- Track 52 : Mithril_59
- Track 53 : JaguarMi_61
- Track 54 : AlanGrant_63, Vincenzo_62
- Track 55 : QueenPie_57
- Track 56 : Lolalove_60
- Track 57 : Shenyu_64, StinkyVeggy_64, KarasumaRum_64, Nangang_64
- Track 58 : SirJeffery_64, Reccee_65, Acadian_65, Donny_66, Suigeneris_66, EastView9101_64, Rita130_64
- Track 59 : Rich_63, Bae_65
- Track 60 : Phelemich_62, Reprobate_63
- Track 61 : Mysterious_62
- Track 62 : DigitDog_65
- Track 63 : Nehemiah_63
- Track 64 : Serendipitous_63
- Track 65 : ForDig_60
- Track 66 : Jolie1_059
- Track 67 : 40BC_059, 39HC_059
- Track 68 : KayaCho_59
- Track 69 : Hosp_057
- Track 70 : Saguaro_62
- Track 71 : Thonko_65
- Track 72 : Rinkes_61
- Track 73 : Quesadilla_64
- Track 74 : PenguinLover67_61
- Track 75 : Funsized_65
- Track 76 : Knocker_64
- Track 77 : CRB2_62

Summary of Final Annotations (See graph section above for start numbers):

The start number called the most often in the published annotations is 42, it was called in 267 of the 352 non-draft genes in the pham.

Genes that call this "Most Annotated" start:

- 39HC_059, 40BC_059, AbsoluteMadLad_65, Adriana_67, Aelin_65, Ahwei_58, Aleia_66, AltPhacts_64, Altwerkus_63, Anderson_66, Andre_67, AngelCake_64, Antihero_58, Antonia_64, Apex_60, Apizium_64, Ashraf_66, Austelle_60, Badfish_65, Banjo_64, Basato_65, BatteryCK_64, Beaglebox_64, Bishoperium_65, BlackStallion_66, BlacksBerry_66, BlueHusk_67, Bluephacebaby_65, BobbyK_60, Boehler_65, BoogieWoogie_66, Brilliant_68, BrownCNA_61, Buckeye_65, Burr_65, CRB2_62, CamL_65, CampRoach_66, Cannibal_65, CaspiBoi_65, CharlieGBrown_64, CheetO_65, Cher_65, Childish_64, Chipette_65, Chorkpop_65,

ChrisnMich_59, Chuni_67, Chunky_64, Cobra_66, Coletti_68, Cooper_61, Cornbread_64, Cornobble_64, Cosmolli16_66, Craff_68, Crownjwl_64, DaddyDaniels_67, Daffy_64, Daka_68, Dati_63, DelRivs_63, Derpp_65, Dice_64, Dingo_63, Dione_63, DirtJuice_66, Doddsville_64, DolOn_70, DonSanchon_62, Duggie_65, ElvisPhasley_66, EmGer13_66, Emiris_67, EmpTee_64, Epah_58, Eremos_64, Etaye_65, Eugenia_65, Fanaw_58, Fang_66, Flake_66, FluffyNinja_66, ForDig_60, Fortunato_60, Fozzie_65, Frankicide_63, Frederick_60, FremontTroll_65, Freya_62, FriarPreacher_64, Fringe_69, FugateOSU_66, Gareth_65, GeneCoco_66, GinPorsche_59, Gophee_66, Grand2040_64, GreenChile_66, Gwennie1_63, Gyarad_0064, HSavage_63, Haleema_64, Hally898_58, Hamish_63, Hangman_59, Happabalu_64, Hartsy_64, Harvey_63, Heath_58, Hekos_63, Held_64, HenryJackson_65, HighStump_67, Hocus_64, HogWash_65, Horchata_63, Hosp_057, Hydro_59, ImtiyazSitla_66, Imvubu_59, Inchworm_67, Indlovu_62, Inverness_64, Iridessa_66, Iridoclysis_65, JAMaL_59, JDog_64, JacAttac_66, JaguarMi_61, JakeO_66, JangoPhett_65, Jillium_65, Jiminy_66, Jiraiya_66, Jolie1_059, JoyceMaria_59, Kahve_65, Kailash_64, Karn_66, Katniss_66, KayaCho_59, Keitherie_67, Khan1_66, Kimbrough_66, KingTut_57, KingVeVeVe_64, KlimbOn_65, Kloppinator_66, Knocker_64, Kwadwo_64, Kwksand96_66, Labeouficaum_66, Lambano_58, Larson_69, LasagnaCat_67, Lasso_65, LeeLot_65, Legolas_67, LeiMonet_68, LittleDigger_58, Lolalove_60, Longacauda_66, Lopsy_63, LostAndPhound_65, LuckyMarjie_63, Lulwa_63, Lumine_66, MRabcd_65, Mag7_64, Magic8_66, Magpie_58, Mana_64, Manad_64, Maru_65, Maskar_66, Matalotodo_64, Mecca_65, Melc17_63, MelsMeow_65, Mesh1_66, Mesmerelda_64, MichaelPhcott_64, Mikota_63, MiniBoss_63, MitKao_65, Morgushi_64, Mosaic_63, MrPhizzler_68, Mudslide_59, Mulan_65, Murdoc_63, Nacho_0067, Nanao_58, Nathan_66, Newman_63, NiaNia_67, Nicole21_66, Nigel_59, Nova1_66, Nyala_64, OSmaximus_66, Olak_64, Olive_65, OliverWalter_63, Omniscient_66, OneBrain_68, Orfeu_64, Orwigg_64, Pacifista_64, PenguinLover67_61, Phareon_64, PhatLouie_67, PhenghisKhan_66, Pherdinand_66, Phergie_66, Phipps_65, Phleuron_64, PhrankReynolds_65, PhrodoBaggins_66, Phunky_63, PinheadLarry_64, Pinkman_65, Placalicious_66, Plata_66, Plmatters_64, Podrick_64, Pops_63, Poster_58, Potter_63, Prickles_67, Prince_59, ProfessorX_64, Puhltonio_64, QueenBeane_65, Quisquillae_66, RawrgerThat_60, Renkei_58, Ricotta_65, Riggan_66, Rimu_65, Riverton_65, Robyn_65, Roliet_63, Roscoe_66, SDcharge11_65, Saguario_62, SallyH_68, Samaymay_65, SassyCat97_64, Schadenfreude_65, Schueller_65, Scrick_65, Selr12_66, Sheila_62, ShiVal_63, Sigman_65, Simielle_65, Skippy_66, Slatt_66, Soile_66, Solosis_64, Sophia_64, Soto_63, Spartan300_65, Squid_64, Squiggle_65, Struggle_66, Suffolk_63, Surely_65, Swiphy_67, Swish_66, TallGrassMM_64, Taraxa_67, Thunderbird_65, Timmi_64, TomBombadil_65, Tomlarah_66, Toni_65, TooFast2Furius_65, Tooj_63, True_64, TyrionL_66, Usavi_65, Valjean_65, Vaticameos_62, Veritas_65, VioletZ_61, Virapocalypse_66, Vivaldi_66, Vortex_64, Waleliano_59, Wallhey_66, Waterdiva_65, Weher20_63, Windsor_65, Xincheng_60, Yoshand_66, Zaider_66, Zelda_66, Zemanar_60, Zonia_66,

Genes that have the "Most Annotated" start but do not call it:

- ABU_65, Aonishiki_65, Carthage_64, Chaelin_66, Chah_66, Charles1_66, Chute_66, Colbert_63, DoesntMatter_62, DuchessDung_65, FleetyMac_68, Funsized_65, Giraffe_65, Gwilliam_66, Hertubise_64, Hetaeria_64, IsaacEli_66, Jesabah_67, KLucky39_63, Kikipoo_66, Lego3393_63, Lehmann_66, Lulumae_62, Mcshane_64, Megamind20_66, Megatron_65, Mithril_59, Morty_66, Mutante_65, Numberten_64, Oosterbaan_64, Orion_66, PG1_65, PallasAthena_67, Phamished_67, PhatCats2014_65, Piglet_0065, QueenPie_57, Quesadilla_64,

RedMaple_66, RedRaider89_65, Rinkes_61, Roy17_63, Scoot17C_65, Serendipity_64, Serpentine_0065, ShadowBud_65, SilverBell_66, SirBeauregard_66, Stinger_60, Telesworld_63, ThreeOh3D2_66, Triad_67, UAch1_65, UncleHowie_63, Vaishali24_64, Virgeve_64, Vista_64, Xavier_64,

Genes that do not have the "Most Annotated" start:

• Acadian_65, AlanGrant_63, Allegro_61, Bae_65, BirdsNest_70, Calamitous_62, Coffee_61, DigitDog_65, Donny_66, Durga_68, EastView9101_64, Faze9_60, Haimas_64, Hashim76_68, Kaleb_61, KarasumaRum_64, Kolhan_62, Lars_62, LemonSlice_66, LilMcDreamy_62, LilSmirk_61, LittleMinkey_72, MasterPo_62, Mysterious_62, Nangang_64, Nehemiah_63, Oline_65, Phelemich_62, Pipsqueak_63, Reccee_65, Reprobate_63, Rich_63, Rita130_64, Serendipitous_63, Shenyu_64, SirJeffery_64, StinkyVeggy_64, Suigeneris_66, Thonko_65, Thora_64, Tres_61, Trypo_67, Vincenzo_62, YouGoGlencoco_66, Zenteno07_71,

Summary by start number:

Start 5:

- Found in 24 of 406 (5.9%) of genes in pham
- Manual Annotations of this start: 1 of 352
- Called 4.2% of time when present
- Phage (with cluster) where this start called: KLucky39_63 (B1),

Start 9:

- Found in 5 of 406 (1.2%) of genes in pham
- Manual Annotations of this start: 4 of 352
- Called 80.0% of time when present
- Phage (with cluster) where this start called: Haimas_64 (B1), Oline_65 (B1), Thora_64 (B1), Trypo_67 (B1),

Start 19:

- Found in 2 of 406 (0.5%) of genes in pham
- Manual Annotations of this start: 1 of 352
- Called 50.0% of time when present
- Phage (with cluster) where this start called: Quesadilla_64 (B9),

Start 22:

- Found in 25 of 406 (6.2%) of genes in pham
- Manual Annotations of this start: 8 of 352
- Called 44.0% of time when present
- Phage (with cluster) where this start called: Chaelin_66 (B1), Chute_66 (B1), Colbert_63 (B1), FleetyMac_68 (B1), IsaacEli_66 (B1), Jesabah_67 (B1), Kikipoo_66 (B1), RedMaple_66 (B1), RedRaider89_65 (B1), SirBeauregard_66 (B1), Virgeve_64 (B1),

Start 24:

- Found in 112 of 406 (27.6%) of genes in pham
- Manual Annotations of this start: 34 of 352
- Called 33.0% of time when present
- Phage (with cluster) where this start called: ABU_65 (B1), Aonishiki_65 (B1), Chah_66 (B1), Charles1_66 (B1), DoesntMatter_62 (B1), DuchessDung_65 (B1), Giraffe_65 (B1), Gwilliam_66 (B1), Hertubise_64 (B1), Hetaeria_64 (B1), Lego3393_63 (B1), Lulumae_62 (B1), Mcshane_64 (B1), Megamind20_66 (B1),

Megatron_65 (B1), Morty_66 (B1), Mutante_65 (B1), Numberten_64 (B1), Oosterbaan_64 (B1), Orion_66 (B1), PG1_65 (B1), PallasAthena_67 (B1), Phamished_67 (B1), PhatCats2014_65 (B1), Piglet_0065 (B1), Roy17_63 (B1), Scoot17C_65 (B1), Serendipity_64 (B1), Serpentine_0065 (B1), ShadowBud_65 (B1), SilverBell_66 (B1), Telesworld_63 (B1), ThreeOh3D2_66 (B1), UAch1_65 (B1), UncleHowie_63 (B1), Vista_64 (B1), Xavier_64 (B1),

Start 27:

- Found in 15 of 406 (3.7%) of genes in pham
- Manual Annotations of this start: 8 of 352
- Called 66.7% of time when present
- Phage (with cluster) where this start called: AlanGrant_63 (B4), Carthage_64 (B1), Durga_68 (B1), Lehmann_66 (B1), LemonSlice_66 (B1), Pipsqueak_63 (B1), Triad_67 (B1), Vaishali24_64 (B1), Vincenzo_62 (B4), YouGoGlencoco_66 (B1),

Start 29:

- Found in 20 of 406 (4.9%) of genes in pham
- Manual Annotations of this start: 9 of 352
- Called 80.0% of time when present
- Phage (with cluster) where this start called: Acadian_65 (B5), Bae_65 (B5), DigitDog_65 (B5), Donny_66 (B5), EastView9101_64 (B5), KarasumaRum_64 (B5), Nangang_64 (B5), Reccee_65 (B5), Rich_63 (B5), Rinke_61 (B9), Rita130_64 (B5), Serendipitous_63 (B5), Shenyu_64 (B5), SirJeffery_64 (B5), StinkyVeggy_64 (B5), Suigeneris_66 (B5),

Start 36:

- Found in 1 of 406 (0.2%) of genes in pham
- Manual Annotations of this start: 1 of 352
- Called 100.0% of time when present
- Phage (with cluster) where this start called: Stinger_60 (B4),

Start 37:

- Found in 4 of 406 (1.0%) of genes in pham
- Manual Annotations of this start: 3 of 352
- Called 100.0% of time when present
- Phage (with cluster) where this start called: BirdsNest_70 (B13), Hashim76_68 (B13), LittleMinkey_72 (B13), Zenteno07_71 (B13),

Start 38:

- Found in 2 of 406 (0.5%) of genes in pham
- Manual Annotations of this start: 1 of 352
- Called 50.0% of time when present
- Phage (with cluster) where this start called: LilMcDreamy_62 (B12),

Start 39:

- Found in 5 of 406 (1.2%) of genes in pham
- Manual Annotations of this start: 3 of 352
- Called 80.0% of time when present
- Phage (with cluster) where this start called: Funsized_65 (B9), Nehemiah_63 (B5), Phelemich_62 (B5), Reprobate_63 (B5),

Start 40:

- Found in 1 of 406 (0.2%) of genes in pham

- Manual Annotations of this start: 1 of 352
- Called 100.0% of time when present
- Phage (with cluster) where this start called: Mithril_59 (B4),

Start 42:

- Found in 361 of 406 (88.9%) of genes in pham
- Manual Annotations of this start: 267 of 352
- Called 83.7% of time when present
- Phage (with cluster) where this start called: 39HC_059 (B6), 40BC_059 (B6), AbsoluteMadLad_65 (B1), Adriana_67 (B1), Aelin_65 (B1), Ahwei_58 (B4), Aleia_66 (B1), AltPhacts_64 (B1), Altwerkus_63 (B1), Anderson_66 (B1), Andre_67 (B1), AngelCake_64 (B1), Antihero_58 (B4), Antonia_64 (B1), Apex_60 (B4), Apizium_64 (B1), Ashraf_66 (B1), Austelle_60 (B4), Badfish_65 (B1), Banjo_64 (B1), Basato_65 (B1), BatteryCK_64 (B1), Beaglebox_64 (B1), Bishoperium_65 (B1), BlackStallion_66 (B1), BlacksBerry_66 (B1), BlueHusk_67 (B1), Bluephacebaby_65 (B1), BobbyK_60 (B4), Boehler_65 (B1), BoogieWoogie_66 (B1), Brilliant_68 (B1), BrownCNA_61 (B4), Buckeye_65 (B1), Burr_65 (B1), CRB2_62 (B9), CamL_65 (B1), CampRoach_66 (B1), Cannibal_65 (B1), Caspiroi_65 (B1), CharlieGBrown_64 (B1), CheetO_65 (B1), Cher_65 (B1), Childish_64 (B1), Chipette_65 (B1), Chorkpop_65 (B1), ChrisnMich_59 (B4), Chuni_67 (B1), Chunky_64 (B1), Cobra_66 (B1), Coletti_68 (B1), Cooper_61 (B4), Cornbread_64 (B1), Cornobble_64 (B1), Cosmolli16_66 (B1), Craff_68 (B1), Crownjwl_64 (B1), DaddyDaniels_67 (B1), Daffy_64 (B1), Daka_68 (B1), Dati_63 (B1), DelRivs_63 (B1), Derpp_65 (B1), Dice_64 (B1), Dingo_63 (B1), Dione_63 (B1), DirtJuice_66 (B1), Doddsville_64 (B1), DolOn_70 (B1), DonSanchon_62 (B1), Duggie_65 (B1), ElvisPhasley_66 (B1), EmGer13_66 (B1), Emiris_67 (B1), EmpTee_64 (B1), Epah_58 (B4), Eremos_64 (B1), Etaye_65 (B1), Eugenia_65 (B1), Fanaw_58 (B4), Fang_66 (B1), Flake_66 (B1), FluffyNinja_66 (B1), ForDig_60 (B6), Fortunato_60 (B4), Fozzie_65 (B1), Frankicide_63 (B1), Frederick_60 (B4), FremontTroll_65 (B1), Freya_62 (B1), FriarPreacher_64 (B1), Fringe_69 (B1), FugateOSU_66 (B1), Gareth_65 (B1), GeneCoco_66 (B1), GinPorsche_59 (B4), Gophe_66 (B1), Grand2040_64 (B1), GreenChile_66 (B1), Gwennie1_63 (B1), Gyarad_0064 (B1), HSavage_63 (B1), Haleema_64 (B1), Hally898_58 (B4), Hamish_63 (B1), Hangman_59 (B4), Happabalu_64 (B1), Hartsy_64 (B1), Harvey_63 (B1), Heath_58 (B4), Hekos_63 (B1), Held_64 (B1), HenryJackson_65 (B1), HighStump_67 (B1), Hocus_64 (B1), HogWash_65 (B1), Horchata_63 (B1), Hosp_057 (B6), Hydro_59 (B4), ImtiyazSitla_66 (B1), Imvubu_59 (B10), Inchworm_67 (B1), Indlovu_62 (B11), Inverness_64 (B1), Iridessa_66 (B1), Iridoclysis_65 (B1), JAMaL_59 (B4), JDog_64 (B1), JacAttac_66 (B1), JaguarMi_61 (B4), JakeO_66 (B1), JangoPhett_65 (B1), Jillium_65 (B1), Jiminy_66 (B1), Jiraiya_66 (B1), Jolie1_059 (B6), JoyceMaria_59 (B4), Kahve_65 (B1), Kailash_64 (B1), Karn_66 (B1), Katniss_66 (B1), KayaCho_59 (B6), Keitherie_67 (B1), Khan1_66 (B1), Kimbrough_66 (B1), KingTut_57 (B1), KingVeVeVe_64 (B1), KlimbOn_65 (B1), Kloppinator_66 (B1), Knocker_64 (B9), Kwadwo_64 (B1), Kwksand96_66 (B1), Labeouficaum_66 (B1), Lambano_58 (B4), Larson_69 (B1), LasagnaCat_67 (B1), Lasso_65 (B1), LeeLot_65 (B1), Legolas_67 (B1), LeiMonet_68 (B1), LittleDigger_58 (B4), Lolalove_60 (B4), Longacauda_66 (B1), Lopsy_63 (B1), LostAndPhound_65 (B1), LuckyMarjie_63 (B1), Lulwa_63 (B1), Lumine_66 (B1), MRabcd_65 (B1), Mag7_64 (B1), Magic8_66 (B1), Magpie_58 (B4), Mana_64 (B1), Manad_64 (B1), Maru_65 (B1), Maskar_66 (B1), Matalotodo_64 (B1), Mecca_65 (B1), Melc17_63 (B1), MelsMeow_65 (B1), Mesh1_66 (B1), Mesmerelda_64 (B1), MichaelPhcott_64 (B1), Mikota_63 (B1), MiniBoss_63 (B1), MitKao_65 (B1), Morgushi_64 (B1), Mosaic_63 (B1), MrPhizzler_68 (B1), Mudslide_59 (B4), Mulan_65 (B1), Murdoc_63 (B1), Nacho_0067 (B1), Nanao_58 (B4), Nathan_66 (B1), Newman_63 (B1),

NiaNia_67 (B1), Nicole21_66 (B1), Nigel_59 (B4), Nova1_66 (B1), Nyala_64 (B1), OSmaximus_66 (B1), Olak_64 (B1), Olive_65 (B1), OliverWalter_63 (B1), Omniscient_66 (B1), OneBrain_68 (B1), Orfeu_64 (B1), Orwigg_64 (B1), Pacifista_64 (B1), PenguinLover67_61 (B9), Phareon_64 (B1), PhatLouie_67 (B1), PhenghisKhan_66 (B1), Pherdinand_66 (B1), Phergie_66 (B1), Phipps_65 (B1), Phleuron_64 (B1), PhrankReynolds_65 (B1), PhrodoBaggins_66 (B1), Phunky_63 (B1), PinheadLarry_64 (B1), Pinkman_65 (B1), Placalicious_66 (B1), Plata_66 (B1), Plmatters_64 (B1), Podrick_64 (B1), Pops_63 (B1), Poster_58 (B4), Potter_63 (B1), Prickles_67 (B1), Prince_59 (B4), ProfessorX_64 (B1), Puhltonio_64 (B1), QueenBeane_65 (B1), Quisquiliae_66 (B1), RawrgerThat_60 (B4), Renkei_58 (B4), Ricotta_65 (B1), Riggan_66 (B1), Rimu_65 (B1), Riverton_65 (B1), Robyn_65 (B1), Roliet_63 (B1), Roscoe_66 (B1), SDcharge11_65 (B1), Saguaro_62 (B7), SallyH_68 (B1), Samaymay_65 (B1), SassyCat97_64 (B1), Schadenfreude_65 (B1), Schueller_65 (B1), Scrick_65 (B1), Selr12_66 (B1), Sheila_62 (B1), ShiVal_63 (B1), Sigman_65 (B1), Simielle_65 (B1), Skippy_66 (B1), Slatt_66 (B1), Soile_66 (B1), Solosis_64 (B1), Sophia_64 (B1), Soto_63 (B1), Spartan300_65 (B1), Squid_64 (B1), Squiggle_65 (B1), Struggle_66 (B1), Suffolk_63 (B1), Surely_65 (B1), Swiphy_67 (B1), Swish_66 (B1), TallGrassMM_64 (B1), Taraxa_67 (B1), Thunderbird_65 (B1), Timmi_64 (B1), TomBombadil_65 (B1), Tomlarah_66 (B1), Toni_65 (B1), TooFast2Furius_65 (B1), Tooj_63 (B1), True_64 (B1), TyrionL_66 (B1), Usavi_65 (B1), Valjean_65 (B1), Vaticameos_62 (B1), Veritas_65 (B1), VioletZ_61 (B4), Virapocalypse_66 (B1), Vivaldi_66 (B1), Vortex_64 (B1), Waleliano_59 (B4), Wallhey_66 (B1), Waterdiva_65 (B1), Weher20_63 (B1), Windsor_65 (B1), Xincheng_60 (B4), Yoshand_66 (B1), Zaider_66 (B1), Zelda_66 (B1), Zemanar_60 (B4), Zonia_66 (B1),

Start 43:

- Found in 4 of 406 (1.0%) of genes in pham
- Manual Annotations of this start: 1 of 352
- Called 25.0% of time when present
- Phage (with cluster) where this start called: Mysterious_62 (B5),

Start 45:

- Found in 36 of 406 (8.9%) of genes in pham
- No Manual Annotations of this start.
- Called 2.8% of time when present
- Phage (with cluster) where this start called: QueenPie_57 (B4),

Start 52:

- Found in 11 of 406 (2.7%) of genes in pham
- Manual Annotations of this start: 10 of 352
- Called 100.0% of time when present
- Phage (with cluster) where this start called: Allegro_61 (B2), Calamitous_62 (B2), Coffee_61 (B2), Faze9_60 (B2), Kaleb_61 (B2), Kolhan_62 (B2), Lars_62 (B2), LilSmirk_61 (B2), MasterPo_62 (B2), Thonko_65 (B8), Tres_61 (B2),

Summary by clusters:

There are 12 clusters represented in this pham: B10, B4, B5, B6, B7, B12, B1, B2, B11, B8, B9, B13,

Info for manual annotations of cluster B1:

- Start number 5 was manually annotated 1 time for cluster B1.

- Start number 9 was manually annotated 4 times for cluster B1.
- Start number 22 was manually annotated 8 times for cluster B1.
- Start number 24 was manually annotated 34 times for cluster B1.
- Start number 27 was manually annotated 6 times for cluster B1.
- Start number 42 was manually annotated 235 times for cluster B1.

Info for manual annotations of cluster B10:

- Start number 42 was manually annotated 1 time for cluster B10.

Info for manual annotations of cluster B11:

- Start number 42 was manually annotated 1 time for cluster B11.

Info for manual annotations of cluster B12:

- Start number 38 was manually annotated 1 time for cluster B12.

Info for manual annotations of cluster B13:

- Start number 37 was manually annotated 3 times for cluster B13.

Info for manual annotations of cluster B2:

- Start number 52 was manually annotated 9 times for cluster B2.

Info for manual annotations of cluster B4:

- Start number 27 was manually annotated 2 times for cluster B4.
- Start number 36 was manually annotated 1 time for cluster B4.
- Start number 40 was manually annotated 1 time for cluster B4.
- Start number 42 was manually annotated 24 times for cluster B4.

Info for manual annotations of cluster B5:

- Start number 29 was manually annotated 8 times for cluster B5.
- Start number 39 was manually annotated 2 times for cluster B5.
- Start number 43 was manually annotated 1 time for cluster B5.

Info for manual annotations of cluster B6:

- Start number 42 was manually annotated 2 times for cluster B6.

Info for manual annotations of cluster B7:

- Start number 42 was manually annotated 1 time for cluster B7.

Info for manual annotations of cluster B8:

- Start number 52 was manually annotated 1 time for cluster B8.

Info for manual annotations of cluster B9:

- Start number 19 was manually annotated 1 time for cluster B9.
- Start number 29 was manually annotated 1 time for cluster B9.
- Start number 39 was manually annotated 1 time for cluster B9.
- Start number 42 was manually annotated 3 times for cluster B9.

Gene Information:

Gene: 39HC_059 Start: 55136, Stop: 54783, Start Num: 42

Candidate Starts for 39HC_059:

(41, 55139), (Start: 42 @55136 has 267 MA's), (71, 54968), (96, 54872),

Gene: 40BC_059 Start: 55136, Stop: 54783, Start Num: 42

Candidate Starts for 40BC_059:

(41, 55139), (Start: 42 @55136 has 267 MA's), (71, 54968), (96, 54872),

Gene: ABU_65 Start: 56126, Stop: 55701, Start Num: 24

Candidate Starts for ABU_65:

(Start: 24 @56126 has 34 MA's), (Start: 42 @56060 has 267 MA's), (54, 55982), (55, 55979), (66, 55907), (70, 55892), (89, 55832), (93, 55817), (100, 55778),

Gene: AbsoluteMadLad_65 Start: 56014, Stop: 55655, Start Num: 42

Candidate Starts for AbsoluteMadLad_65:

(Start: 42 @56014 has 267 MA's), (50, 55954), (55, 55933), (66, 55861), (70, 55846), (89, 55786), (93, 55771), (100, 55732),

Gene: Acadian_65 Start: 57138, Stop: 56755, Start Num: 29

Candidate Starts for Acadian_65:

(Start: 29 @57138 has 9 MA's), (92, 56874), (94, 56865), (99, 56835),

Gene: Adriana_67 Start: 56641, Stop: 56282, Start Num: 42

Candidate Starts for Adriana_67:

(Start: 22 @56713 has 8 MA's), (26, 56698), (28, 56692), (Start: 42 @56641 has 267 MA's), (50, 56581), (55, 56560), (66, 56488), (70, 56473), (89, 56413), (93, 56398), (100, 56359),

Gene: Aelin_65 Start: 55578, Stop: 55219, Start Num: 42

Candidate Starts for Aelin_65:

(Start: 42 @55578 has 267 MA's), (50, 55518), (55, 55497), (66, 55425), (70, 55410), (89, 55350), (93, 55335), (100, 55296),

Gene: Ahwei_58 Start: 55731, Stop: 55444, Start Num: 42

Candidate Starts for Ahwei_58:

(Start: 42 @55731 has 267 MA's), (45, 55713), (48, 55704), (60, 55617), (65, 55590), (85, 55557), (93, 55542), (96, 55521), (98, 55509), (103, 55491), (107, 55455),

Gene: AlanGrant_63 Start: 57986, Stop: 57591, Start Num: 27

Candidate Starts for AlanGrant_63:

(Start: 27 @57986 has 8 MA's), (46, 57902), (56, 57833), (58, 57821), (60, 57809), (65, 57782), (66, 57776), (70, 57761), (74, 57746), (96, 57680), (103, 57650), (109, 57605),

Gene: Aleia_66 Start: 55719, Stop: 55363, Start Num: 42

Candidate Starts for Aleia_66:

(Start: 42 @55719 has 267 MA's), (50, 55659), (55, 55638), (66, 55566), (70, 55551), (89, 55491), (93, 55476), (100, 55437),

Gene: Allegro_61 Start: 54331, Stop: 54071, Start Num: 52

Candidate Starts for Allegro_61:

(47, 54373), (Start: 52 @54331 has 10 MA's), (63, 54265), (80, 54223), (98, 54139), (108, 54076),

Gene: AltPhacts_64 Start: 55127, Stop: 54768, Start Num: 42

Candidate Starts for AltPhacts_64:

(Start: 42 @55127 has 267 MA's), (50, 55067), (55, 55046), (66, 54974), (70, 54959), (89, 54899), (93, 54884), (100, 54845),

Gene: Altwerkus_63 Start: 55224, Stop: 54865, Start Num: 42

Candidate Starts for Altwerkus_63:

(Start: 24 @55290 has 34 MA's), (Start: 42 @55224 has 267 MA's), (54, 55146), (55, 55143), (66, 55071), (70, 55056), (89, 54996), (93, 54981), (100, 54942),

Gene: Anderson_66 Start: 55796, Stop: 55437, Start Num: 42

Candidate Starts for Anderson_66:

(Start: 24 @55862 has 34 MA's), (Start: 42 @55796 has 267 MA's), (54, 55718), (55, 55715), (66, 55643), (70, 55628), (89, 55568), (93, 55553), (100, 55514),

Gene: Andre_67 Start: 55972, Stop: 55613, Start Num: 42

Candidate Starts for Andre_67:

(Start: 24 @56038 has 34 MA's), (Start: 42 @55972 has 267 MA's), (50, 55912), (54, 55894), (55, 55891), (66, 55819), (70, 55804), (89, 55744), (93, 55729), (100, 55690),

Gene: AngelCake_64 Start: 55711, Stop: 55352, Start Num: 42

Candidate Starts for AngelCake_64:

(Start: 42 @55711 has 267 MA's), (50, 55651), (55, 55630), (66, 55558), (70, 55543), (89, 55483), (93, 55468), (100, 55429),

Gene: Antihero_58 Start: 55729, Stop: 55442, Start Num: 42

Candidate Starts for Antihero_58:

(Start: 42 @55729 has 267 MA's), (45, 55711), (48, 55702), (60, 55615), (65, 55588), (85, 55555), (93, 55540), (96, 55519), (98, 55507), (103, 55489), (107, 55453),

Gene: Antonia_64 Start: 55578, Stop: 55219, Start Num: 42

Candidate Starts for Antonia_64:

(Start: 42 @55578 has 267 MA's), (50, 55518), (55, 55497), (66, 55425), (70, 55410), (89, 55350), (93, 55335), (100, 55296),

Gene: Aonishiki_65 Start: 55905, Stop: 55480, Start Num: 24

Candidate Starts for Aonishiki_65:

(Start: 24 @55905 has 34 MA's), (Start: 42 @55839 has 267 MA's), (54, 55761), (55, 55758), (66, 55686), (70, 55671), (89, 55611), (93, 55596), (100, 55557),

Gene: Apex_60 Start: 56952, Stop: 56665, Start Num: 42

Candidate Starts for Apex_60:

(Start: 42 @56952 has 267 MA's), (45, 56934), (48, 56925), (60, 56838), (65, 56811), (93, 56763), (96, 56742), (98, 56730), (103, 56712), (107, 56676),

Gene: Apizium_64 Start: 55240, Stop: 54887, Start Num: 42

Candidate Starts for Apizium_64:

(Start: 42 @55240 has 267 MA's), (50, 55180), (55, 55159), (66, 55087), (70, 55072), (89, 55018), (93, 55003), (100, 54964),

Gene: Ashraf_66 Start: 55792, Stop: 55433, Start Num: 42

Candidate Starts for Ashraf_66:

(Start: 42 @55792 has 267 MA's), (50, 55732), (55, 55711), (66, 55639), (70, 55624), (89, 55564), (93, 55549), (100, 55510),

Gene: Austelle_60 Start: 57408, Stop: 57121, Start Num: 42

Candidate Starts for Austelle_60:

(Start: 42 @57408 has 267 MA's), (45, 57390), (48, 57381), (60, 57294), (65, 57267), (93, 57219), (96, 57198), (98, 57186), (103, 57168), (107, 57132),

Gene: Badfish_65 Start: 56082, Stop: 55723, Start Num: 42

Candidate Starts for Badfish_65:

(Start: 24 @56148 has 34 MA's), (Start: 42 @56082 has 267 MA's), (54, 56004), (55, 56001), (66, 55929), (70, 55914), (89, 55854), (93, 55839), (100, 55800),

Gene: Bae_65 Start: 58112, Stop: 57729, Start Num: 29

Candidate Starts for Bae_65:

(Start: 29 @58112 has 9 MA's), (83, 57884), (92, 57848), (94, 57839), (99, 57809),

Gene: Banjo_64 Start: 55571, Stop: 55212, Start Num: 42

Candidate Starts for Banjo_64:

(Start: 24 @55637 has 34 MA's), (Start: 42 @55571 has 267 MA's), (50, 55511), (55, 55490), (66, 55418), (70, 55403), (89, 55343), (93, 55328), (100, 55289),

Gene: Basato_65 Start: 55845, Stop: 55486, Start Num: 42

Candidate Starts for Basato_65:

(Start: 42 @55845 has 267 MA's), (50, 55785), (55, 55764), (66, 55692), (70, 55677), (89, 55617), (93, 55602), (100, 55563),

Gene: BatteryCK_64 Start: 55539, Stop: 55180, Start Num: 42

Candidate Starts for BatteryCK_64:

(Start: 42 @55539 has 267 MA's), (50, 55479), (55, 55458), (66, 55386), (70, 55371), (89, 55311), (93, 55296), (100, 55257),

Gene: Beaglebox_64 Start: 55635, Stop: 55276, Start Num: 42

Candidate Starts for Beaglebox_64:

(Start: 24 @55701 has 34 MA's), (Start: 42 @55635 has 267 MA's), (54, 55557), (55, 55554), (66, 55482), (70, 55467), (89, 55407), (93, 55392), (100, 55353),

Gene: BirdsNest_70 Start: 57348, Stop: 57022, Start Num: 37

Candidate Starts for BirdsNest_70:

(25, 57402), (Start: 37 @57348 has 3 MA's), (66, 57180), (70, 57165), (93, 57123), (94, 57117), (95, 57108), (96, 57102),

Gene: Bishoperium_65 Start: 56110, Stop: 55751, Start Num: 42

Candidate Starts for Bishoperium_65:

(Start: 24 @56176 has 34 MA's), (Start: 42 @56110 has 267 MA's), (55, 56029), (66, 55957), (70, 55942), (89, 55882), (93, 55867), (100, 55828),

Gene: BlackStallion_66 Start: 55839, Stop: 55480, Start Num: 42

Candidate Starts for BlackStallion_66:

(Start: 42 @55839 has 267 MA's), (50, 55779), (55, 55758), (66, 55686), (70, 55671), (89, 55611), (93, 55596), (100, 55557),

Gene: BlackBerry_66 Start: 55471, Stop: 55112, Start Num: 42

Candidate Starts for BlackBerry_66:

(Start: 42 @55471 has 267 MA's), (50, 55411), (55, 55390), (66, 55318), (70, 55303), (89, 55243), (93, 55228), (100, 55189),

Gene: BlueHusk_67 Start: 55594, Stop: 55235, Start Num: 42

Candidate Starts for BlueHusk_67:

(Start: 42 @55594 has 267 MA's), (50, 55534), (55, 55513), (66, 55441), (70, 55426), (89, 55366), (93, 55351), (100, 55312),

Gene: Bluephacebaby_65 Start: 56113, Stop: 55754, Start Num: 42

Candidate Starts for Bluephacebaby_65:

(Start: 24 @56179 has 34 MA's), (Start: 42 @56113 has 267 MA's), (54, 56035), (55, 56032), (66, 55960), (70, 55945), (89, 55885), (93, 55870), (100, 55831),

Gene: BobbyK_60 Start: 56718, Stop: 56431, Start Num: 42

Candidate Starts for BobbyK_60:

(Start: 42 @56718 has 267 MA's), (45, 56700), (48, 56691), (60, 56604), (65, 56577), (93, 56529), (96, 56508), (98, 56496), (103, 56478), (107, 56442),

Gene: Boehler_65 Start: 55757, Stop: 55398, Start Num: 42

Candidate Starts for Boehler_65:

(Start: 22 @55829 has 8 MA's), (26, 55814), (28, 55808), (Start: 42 @55757 has 267 MA's), (50, 55697), (55, 55676), (66, 55604), (70, 55589), (89, 55529), (93, 55514), (100, 55475),

Gene: BoogieWoogie_66 Start: 55546, Stop: 55187, Start Num: 42

Candidate Starts for BoogieWoogie_66:

(Start: 24 @55612 has 34 MA's), (Start: 42 @55546 has 267 MA's), (50, 55486), (55, 55465), (66, 55393), (70, 55378), (89, 55318), (93, 55303), (100, 55264),

Gene: Brilliant_68 Start: 56079, Stop: 55720, Start Num: 42

Candidate Starts for Brilliant_68:

(Start: 24 @56145 has 34 MA's), (Start: 42 @56079 has 267 MA's), (54, 56001), (55, 55998), (66, 55926), (70, 55911), (89, 55851), (93, 55836), (100, 55797),

Gene: BrownCNA_61 Start: 57075, Stop: 56788, Start Num: 42

Candidate Starts for BrownCNA_61:

(Start: 42 @57075 has 267 MA's), (45, 57057), (48, 57048), (60, 56961), (65, 56934), (93, 56886), (96, 56865), (98, 56853), (103, 56835), (107, 56799),

Gene: Buckeye_65 Start: 56371, Stop: 56012, Start Num: 42

Candidate Starts for Buckeye_65:

(1, 56530), (Start: 5 @56515 has 1 MA's), (13, 56470), (Start: 42 @56371 has 267 MA's), (55, 56290), (66, 56218), (70, 56203), (89, 56143), (93, 56128), (100, 56089),

Gene: Burr_65 Start: 55546, Stop: 55187, Start Num: 42

Candidate Starts for Burr_65:

(Start: 24 @55612 has 34 MA's), (Start: 42 @55546 has 267 MA's), (54, 55468), (55, 55465), (66, 55393), (70, 55378), (89, 55318), (93, 55303), (100, 55264),

Gene: CRB2_62 Start: 57788, Stop: 57468, Start Num: 42

Candidate Starts for CRB2_62:

(Start: 42 @57788 has 267 MA's), (53, 57731), (57, 57695), (58, 57692), (98, 57569), (101, 57560), (106, 57533), (108, 57506),

Gene: Calamitous_62 Start: 54341, Stop: 54081, Start Num: 52

Candidate Starts for Calamitous_62:

(47, 54383), (Start: 52 @54341 has 10 MA's), (63, 54275), (80, 54233), (98, 54149), (108, 54086),

Gene: CamL_65 Start: 55878, Stop: 55519, Start Num: 42

Candidate Starts for CamL_65:

(Start: 24 @55944 has 34 MA's), (Start: 42 @55878 has 267 MA's), (55, 55797), (66, 55725), (70, 55710), (89, 55650), (93, 55635), (100, 55596),

Gene: CampRoach_66 Start: 55983, Stop: 55624, Start Num: 42

Candidate Starts for CampRoach_66:

(Start: 42 @55983 has 267 MA's), (50, 55923), (55, 55902), (66, 55830), (70, 55815), (89, 55755), (93, 55740), (100, 55701),

Gene: Cannibal_65 Start: 55820, Stop: 55461, Start Num: 42

Candidate Starts for Cannibal_65:

(Start: 24 @55886 has 34 MA's), (Start: 42 @55820 has 267 MA's), (50, 55760), (55, 55739), (66, 55667), (70, 55652), (89, 55592), (93, 55577), (100, 55538),

Gene: Carthage_64 Start: 55118, Stop: 54699, Start Num: 27

Candidate Starts for Carthage_64:

(Start: 27 @55118 has 8 MA's), (Start: 42 @55058 has 267 MA's), (50, 54998), (55, 54977), (66, 54905), (70, 54890), (89, 54830), (93, 54815), (100, 54776),

Gene: Caspiboi_65 Start: 55804, Stop: 55445, Start Num: 42

Candidate Starts for Caspiboi_65:

(Start: 24 @55870 has 34 MA's), (Start: 42 @55804 has 267 MA's), (50, 55744), (55, 55723), (66, 55651), (70, 55636), (89, 55576), (93, 55561), (100, 55522),

Gene: Chaelin_66 Start: 56180, Stop: 55749, Start Num: 22

Candidate Starts for Chaelin_66:

(Start: 22 @56180 has 8 MA's), (26, 56165), (28, 56159), (Start: 42 @56108 has 267 MA's), (50, 56048), (55, 56027), (66, 55955), (70, 55940), (89, 55880), (93, 55865), (100, 55826),

Gene: Chah_66 Start: 55589, Stop: 55164, Start Num: 24

Candidate Starts for Chah_66:

(Start: 24 @55589 has 34 MA's), (Start: 42 @55523 has 267 MA's), (54, 55445), (55, 55442), (66, 55370), (70, 55355), (89, 55295), (93, 55280), (100, 55241),

Gene: Charles1_66 Start: 55899, Stop: 55474, Start Num: 24

Candidate Starts for Charles1_66:

(Start: 24 @55899 has 34 MA's), (Start: 42 @55833 has 267 MA's), (50, 55773), (54, 55755), (55, 55752), (66, 55680), (70, 55665), (89, 55605), (93, 55590), (100, 55551),

Gene: CharlieGBrown_64 Start: 55484, Stop: 55125, Start Num: 42

Candidate Starts for CharlieGBrown_64:

(Start: 42 @55484 has 267 MA's), (55, 55403), (66, 55331), (70, 55316), (89, 55256), (93, 55241), (100, 55202),

Gene: CheetO_65 Start: 55794, Stop: 55435, Start Num: 42

Candidate Starts for CheetO_65:

(Start: 42 @55794 has 267 MA's), (50, 55734), (55, 55713), (66, 55641), (70, 55626), (89, 55566), (93, 55551), (100, 55512),

Gene: Cher_65 Start: 56088, Stop: 55729, Start Num: 42

Candidate Starts for Cher_65:

(Start: 42 @56088 has 267 MA's), (50, 56028), (55, 56007), (66, 55935), (70, 55920), (89, 55860), (93, 55845), (100, 55806),

Gene: Childish_64 Start: 56099, Stop: 55740, Start Num: 42

Candidate Starts for Childish_64:

(Start: 24 @56165 has 34 MA's), (Start: 42 @56099 has 267 MA's), (50, 56039), (55, 56018), (66, 55946), (70, 55931), (89, 55871), (93, 55856), (100, 55817),

Gene: Chipette_65 Start: 55789, Stop: 55430, Start Num: 42

Candidate Starts for Chipette_65:

(Start: 24 @55855 has 34 MA's), (Start: 42 @55789 has 267 MA's), (50, 55729), (55, 55708), (66, 55636), (70, 55621), (89, 55561), (93, 55546), (100, 55507),

Gene: Chorkpop_65 Start: 55575, Stop: 55216, Start Num: 42

Candidate Starts for Chorkpop_65:

(Start: 42 @55575 has 267 MA's), (50, 55515), (55, 55494), (66, 55422), (70, 55407), (89, 55347), (93, 55332), (100, 55293),

Gene: ChrisnMich_59 Start: 55743, Stop: 55456, Start Num: 42

Candidate Starts for ChrisnMich_59:

(Start: 42 @55743 has 267 MA's), (45, 55725), (48, 55716), (60, 55629), (65, 55602), (93, 55554), (96, 55533), (98, 55521), (103, 55503), (107, 55467),

Gene: Chuni_67 Start: 56335, Stop: 55976, Start Num: 42

Candidate Starts for Chuni_67:

(Start: 42 @56335 has 267 MA's), (54, 56257), (55, 56254), (66, 56182), (70, 56167), (89, 56107), (93, 56092), (100, 56053),

Gene: Chunky_64 Start: 55124, Stop: 54765, Start Num: 42

Candidate Starts for Chunky_64:

(1, 55283), (Start: 5 @55268 has 1 MA's), (13, 55223), (Start: 42 @55124 has 267 MA's), (50, 55064), (55, 55043), (66, 54971), (70, 54956), (89, 54896), (93, 54881), (100, 54842),

Gene: Chute_66 Start: 56208, Stop: 55777, Start Num: 22

Candidate Starts for Chute_66:

(Start: 22 @56208 has 8 MA's), (26, 56193), (28, 56187), (Start: 42 @56136 has 267 MA's), (50, 56076), (55, 56055), (66, 55983), (70, 55968), (89, 55908), (93, 55893), (100, 55854),

Gene: Cobra_66 Start: 56120, Stop: 55761, Start Num: 42

Candidate Starts for Cobra_66:

(Start: 42 @56120 has 267 MA's), (50, 56060), (55, 56039), (66, 55967), (70, 55952), (89, 55892), (93, 55877), (100, 55838),

Gene: Coffee_61 Start: 54445, Stop: 54185, Start Num: 52

Candidate Starts for Coffee_61:

(47, 54487), (Start: 52 @54445 has 10 MA's), (63, 54379), (80, 54337), (98, 54253), (108, 54190),

Gene: Colbert_63 Start: 55206, Stop: 54775, Start Num: 22

Candidate Starts for Colbert_63:

(Start: 22 @55206 has 8 MA's), (26, 55191), (28, 55185), (Start: 42 @55134 has 267 MA's), (50, 55074), (55, 55053), (66, 54981), (70, 54966), (89, 54906), (93, 54891), (100, 54852),

Gene: Coletti_68 Start: 56636, Stop: 56277, Start Num: 42

Candidate Starts for Coletti_68:

(Start: 22 @56708 has 8 MA's), (26, 56693), (28, 56687), (Start: 42 @56636 has 267 MA's), (50, 56576), (55, 56555), (66, 56483), (70, 56468), (89, 56408), (93, 56393), (100, 56354),

Gene: Cooper_61 Start: 56209, Stop: 55922, Start Num: 42

Candidate Starts for Cooper_61:

(Start: 42 @56209 has 267 MA's), (45, 56191), (51, 56149), (58, 56107), (60, 56095), (65, 56068), (93, 56020), (96, 55999), (98, 55987), (100, 55981), (103, 55969),

Gene: Cornbread_64 Start: 55600, Stop: 55241, Start Num: 42

Candidate Starts for Cornbread_64:

(Start: 24 @55666 has 34 MA's), (Start: 42 @55600 has 267 MA's), (54, 55522), (55, 55519), (66, 55447), (70, 55432), (89, 55372), (93, 55357), (100, 55318),

Gene: Cornobble_64 Start: 55568, Stop: 55209, Start Num: 42

Candidate Starts for Cornobble_64:

(Start: 42 @55568 has 267 MA's), (50, 55508), (55, 55487), (66, 55415), (70, 55400), (89, 55340), (93, 55325), (100, 55286),

Gene: Cosmolli16_66 Start: 56278, Stop: 55919, Start Num: 42

Candidate Starts for Cosmolli16_66:

(Start: 24 @56344 has 34 MA's), (Start: 42 @56278 has 267 MA's), (50, 56218), (54, 56200), (55, 56197), (66, 56125), (70, 56110), (89, 56050), (93, 56035), (100, 55996),

Gene: Craff_68 Start: 56523, Stop: 56164, Start Num: 42

Candidate Starts for Craff_68:

(Start: 42 @56523 has 267 MA's), (50, 56463), (55, 56442), (66, 56370), (70, 56355), (89, 56295), (93, 56280), (100, 56241),

Gene: Crownjwl_64 Start: 55597, Stop: 55238, Start Num: 42

Candidate Starts for Crownjwl_64:

(Start: 22 @55669 has 8 MA's), (26, 55654), (28, 55648), (Start: 42 @55597 has 267 MA's), (50, 55537), (55, 55516), (66, 55444), (70, 55429), (89, 55369), (93, 55354), (100, 55315),

Gene: DaddyDaniels_67 Start: 56056, Stop: 55697, Start Num: 42

Candidate Starts for DaddyDaniels_67:

(Start: 24 @56122 has 34 MA's), (Start: 42 @56056 has 267 MA's), (50, 55996), (55, 55975), (66, 55903), (70, 55888), (89, 55828), (93, 55813), (100, 55774),

Gene: Daffy_64 Start: 55561, Stop: 55202, Start Num: 42

Candidate Starts for Daffy_64:

(Start: 42 @55561 has 267 MA's), (50, 55501), (55, 55480), (66, 55408), (70, 55393), (89, 55333), (93, 55318), (100, 55279),

Gene: Daka_68 Start: 56077, Stop: 55718, Start Num: 42

Candidate Starts for Daka_68:

(Start: 24 @56143 has 34 MA's), (Start: 42 @56077 has 267 MA's), (50, 56017), (55, 55996), (66, 55924), (70, 55909), (89, 55849), (93, 55834), (100, 55795),

Gene: Dati_63 Start: 55904, Stop: 55545, Start Num: 42

Candidate Starts for Dati_63:

(Start: 42 @55904 has 267 MA's), (50, 55844), (55, 55823), (66, 55751), (70, 55736), (89, 55676), (93, 55661), (100, 55622),

Gene: DelRivs_63 Start: 55546, Stop: 55187, Start Num: 42

Candidate Starts for DelRivs_63:

(Start: 24 @55612 has 34 MA's), (Start: 42 @55546 has 267 MA's), (54, 55468), (55, 55465), (66, 55393), (70, 55378), (89, 55318), (93, 55303), (100, 55264),

Gene: Derpp_65 Start: 55660, Stop: 55301, Start Num: 42

Candidate Starts for Derpp_65:

(Start: 42 @55660 has 267 MA's), (55, 55579), (66, 55507), (70, 55492), (89, 55432), (93, 55417), (100, 55378),

Gene: Dice_64 Start: 55544, Stop: 55185, Start Num: 42

Candidate Starts for Dice_64:

(Start: 24 @55610 has 34 MA's), (Start: 42 @55544 has 267 MA's), (50, 55484), (54, 55466), (55, 55463), (66, 55391), (70, 55376), (89, 55316), (93, 55301), (100, 55262),

Gene: DigitDog_65 Start: 57197, Stop: 56814, Start Num: 29

Candidate Starts for DigitDog_65:

(Start: 29 @57197 has 9 MA's), (76, 56987), (90, 56942), (92, 56933), (94, 56924), (96, 56909), (99, 56894),

Gene: Dingo_63 Start: 55103, Stop: 54744, Start Num: 42

Candidate Starts for Dingo_63:

(Start: 42 @55103 has 267 MA's), (50, 55043), (55, 55022), (66, 54950), (70, 54935), (89, 54875), (93, 54860), (100, 54821),

Gene: Dione_63 Start: 55275, Stop: 54916, Start Num: 42

Candidate Starts for Dione_63:

(Start: 42 @55275 has 267 MA's), (50, 55215), (55, 55194), (66, 55122), (70, 55107), (89, 55047), (93, 55032), (100, 54993),

Gene: DirtJuice_66 Start: 55865, Stop: 55506, Start Num: 42

Candidate Starts for DirtJuice_66:

(Start: 42 @55865 has 267 MA's), (50, 55805), (55, 55784), (66, 55712), (70, 55697), (89, 55637), (93, 55622), (100, 55583),

Gene: Doddsville_64 Start: 55623, Stop: 55264, Start Num: 42

Candidate Starts for Doddsville_64:

(Start: 42 @55623 has 267 MA's), (50, 55563), (55, 55542), (66, 55470), (70, 55455), (89, 55395), (93, 55380), (100, 55341),

Gene: DoesntMatter_62 Start: 55634, Stop: 55209, Start Num: 24

Candidate Starts for DoesntMatter_62:

(Start: 24 @55634 has 34 MA's), (Start: 42 @55568 has 267 MA's), (50, 55508), (55, 55487), (66, 55415), (70, 55400), (89, 55340), (93, 55325), (100, 55286),

Gene: DolOn_70 Start: 57023, Stop: 56664, Start Num: 42

Candidate Starts for DolOn_70:

(Start: 42 @57023 has 267 MA's), (50, 56963), (55, 56942), (66, 56870), (70, 56855), (89, 56795), (93, 56780), (100, 56741),

Gene: DonSanchon_62 Start: 55258, Stop: 54899, Start Num: 42

Candidate Starts for DonSanchon_62:

(Start: 42 @55258 has 267 MA's), (50, 55198), (54, 55180), (55, 55177), (66, 55105), (70, 55090), (89, 55030), (93, 55015), (100, 54976),

Gene: Donny_66 Start: 57184, Stop: 56801, Start Num: 29

Candidate Starts for Donny_66:

(Start: 29 @57184 has 9 MA's), (92, 56920), (94, 56911), (99, 56881),

Gene: DuchessDung_65 Start: 55207, Stop: 54782, Start Num: 24

Candidate Starts for DuchessDung_65:

(Start: 24 @55207 has 34 MA's), (Start: 42 @55141 has 267 MA's), (50, 55081), (55, 55060), (66, 54988), (70, 54973), (89, 54913), (93, 54898), (100, 54859),

Gene: Duggie_65 Start: 55819, Stop: 55460, Start Num: 42

Candidate Starts for Duggie_65:

(Start: 42 @55819 has 267 MA's), (50, 55759), (55, 55738), (66, 55666), (70, 55651), (89, 55591), (93, 55576), (100, 55537),

Gene: Durga_68 Start: 56368, Stop: 55949, Start Num: 27

Candidate Starts for Durga_68:

(Start: 9 @56434 has 4 MA's), (Start: 27 @56368 has 8 MA's), (54, 56230), (55, 56227), (66, 56155), (70, 56140), (89, 56080), (93, 56065), (100, 56026),

Gene: EastView9101_64 Start: 56882, Stop: 56499, Start Num: 29

Candidate Starts for EastView9101_64:

(Start: 29 @56882 has 9 MA's), (92, 56618), (94, 56609), (99, 56579),

Gene: ElvisPhasley_66 Start: 56304, Stop: 55945, Start Num: 42

Candidate Starts for ElvisPhasley_66:

(1, 56463), (Start: 5 @56448 has 1 MA's), (13, 56403), (Start: 42 @56304 has 267 MA's), (50, 56244), (55, 56223), (66, 56151), (70, 56136), (89, 56076), (93, 56061), (100, 56022),

Gene: EmGer13_66 Start: 55578, Stop: 55219, Start Num: 42

Candidate Starts for EmGer13_66:

(Start: 42 @55578 has 267 MA's), (50, 55518), (55, 55497), (66, 55425), (70, 55410), (89, 55350), (93, 55335), (100, 55296),

Gene: Emiris_67 Start: 56275, Stop: 55916, Start Num: 42

Candidate Starts for Emiris_67:

(Start: 42 @56275 has 267 MA's), (50, 56215), (55, 56194), (66, 56122), (70, 56107), (89, 56047), (93, 56032), (100, 55993),

Gene: EmpTee_64 Start: 55784, Stop: 55425, Start Num: 42

Candidate Starts for EmpTee_64:

(Start: 42 @55784 has 267 MA's), (50, 55724), (55, 55703), (66, 55631), (70, 55616), (89, 55556), (93, 55541), (100, 55502),

Gene: Epah_58 Start: 55729, Stop: 55442, Start Num: 42

Candidate Starts for Epah_58:

(Start: 42 @55729 has 267 MA's), (45, 55711), (48, 55702), (60, 55615), (65, 55588), (85, 55555), (93, 55540), (96, 55519), (98, 55507), (103, 55489), (107, 55453),

Gene: Eremos_64 Start: 55774, Stop: 55415, Start Num: 42

Candidate Starts for Eremos_64:

(Start: 42 @55774 has 267 MA's), (50, 55714), (55, 55693), (66, 55621), (70, 55606), (89, 55546), (93, 55531), (100, 55492),

Gene: Etaye_65 Start: 56417, Stop: 56058, Start Num: 42

Candidate Starts for Etaye_65:

(Start: 42 @56417 has 267 MA's), (50, 56357), (55, 56336), (66, 56264), (70, 56249), (89, 56189), (93, 56174), (100, 56135),

Gene: Eugenia_65 Start: 55927, Stop: 55568, Start Num: 42

Candidate Starts for Eugenia_65:

(1, 56086), (Start: 5 @56071 has 1 MA's), (13, 56026), (Start: 42 @55927 has 267 MA's), (54, 55849), (55, 55846), (66, 55774), (70, 55759), (89, 55699), (93, 55684), (100, 55645),

Gene: Fanaw_58 Start: 56630, Stop: 56343, Start Num: 42

Candidate Starts for Fanaw_58:

(Start: 42 @56630 has 267 MA's), (45, 56612), (48, 56603), (60, 56516), (65, 56489), (93, 56441), (96, 56420), (98, 56408), (103, 56390), (107, 56354),

Gene: Fang_66 Start: 55820, Stop: 55461, Start Num: 42

Candidate Starts for Fang_66:

(1, 55979), (Start: 5 @55964 has 1 MA's), (13, 55919), (Start: 42 @55820 has 267 MA's), (54, 55742), (55, 55739), (66, 55667), (70, 55652), (89, 55592), (93, 55577), (100, 55538),

Gene: Faze9_60 Start: 54468, Stop: 54208, Start Num: 52

Candidate Starts for Faze9_60:

(47, 54510), (Start: 52 @54468 has 10 MA's), (63, 54402), (80, 54360), (98, 54276), (108, 54213),

Gene: Flake_66 Start: 55816, Stop: 55457, Start Num: 42

Candidate Starts for Flake_66:

(Start: 42 @55816 has 267 MA's), (50, 55756), (55, 55735), (66, 55663), (70, 55648), (89, 55588), (93, 55573), (100, 55534),

Gene: FleetyMac_68 Start: 55830, Stop: 55399, Start Num: 22

Candidate Starts for FleetyMac_68:

(Start: 22 @55830 has 8 MA's), (26, 55815), (28, 55809), (Start: 42 @55758 has 267 MA's), (50, 55698), (55, 55677), (66, 55605), (70, 55590), (89, 55530), (93, 55515), (100, 55476),

Gene: FluffyNinja_66 Start: 55840, Stop: 55481, Start Num: 42

Candidate Starts for FluffyNinja_66:

(Start: 42 @55840 has 267 MA's), (50, 55780), (55, 55759), (66, 55687), (70, 55672), (89, 55612), (93, 55597), (100, 55558),

Gene: ForDig_60 Start: 55467, Stop: 55114, Start Num: 42

Candidate Starts for ForDig_60:

(Start: 42 @55467 has 267 MA's), (60, 55350), (71, 55299), (96, 55203),

Gene: Fortunato_60 Start: 56770, Stop: 56483, Start Num: 42

Candidate Starts for Fortunato_60:

(Start: 42 @56770 has 267 MA's), (45, 56752), (48, 56743), (60, 56656), (65, 56629), (93, 56581), (96, 56560), (98, 56548), (103, 56530), (107, 56494),

Gene: Fozzie_65 Start: 56066, Stop: 55707, Start Num: 42

Candidate Starts for Fozzie_65:

(Start: 42 @56066 has 267 MA's), (50, 56006), (55, 55985), (66, 55913), (70, 55898), (89, 55838), (93, 55823), (100, 55784),

Gene: Frankicide_63 Start: 55606, Stop: 55247, Start Num: 42

Candidate Starts for Frankicide_63:

(Start: 42 @55606 has 267 MA's), (50, 55546), (55, 55525), (66, 55453), (70, 55438), (89, 55378), (93, 55363), (100, 55324),

Gene: Frederick_60 Start: 56661, Stop: 56374, Start Num: 42

Candidate Starts for Frederick_60:

(Start: 42 @56661 has 267 MA's), (45, 56643), (48, 56634), (60, 56547), (65, 56520), (93, 56472), (96, 56451), (98, 56439), (103, 56421), (107, 56385),

Gene: FremontTroll_65 Start: 56172, Stop: 55813, Start Num: 42

Candidate Starts for FremontTroll_65:

(Start: 24 @56238 has 34 MA's), (Start: 42 @56172 has 267 MA's), (54, 56094), (55, 56091), (66, 56019), (70, 56004), (89, 55944), (93, 55929), (100, 55890),

Gene: Freya_62 Start: 55266, Stop: 54907, Start Num: 42

Candidate Starts for Freya_62:

(Start: 22 @55338 has 8 MA's), (26, 55323), (28, 55317), (Start: 42 @55266 has 267 MA's), (54, 55188), (55, 55185), (66, 55113), (70, 55098), (89, 55038), (93, 55023), (100, 54984),

Gene: FriarPreacher_64 Start: 55659, Stop: 55300, Start Num: 42

Candidate Starts for FriarPreacher_64:

(Start: 42 @55659 has 267 MA's), (50, 55599), (55, 55578), (66, 55506), (70, 55491), (89, 55431), (93, 55416), (100, 55377),

Gene: Fringe_69 Start: 56442, Stop: 56083, Start Num: 42

Candidate Starts for Fringe_69:

(Start: 22 @56514 has 8 MA's), (26, 56499), (28, 56493), (Start: 42 @56442 has 267 MA's), (54, 56364), (55, 56361), (66, 56289), (70, 56274), (89, 56214), (93, 56199), (100, 56160),

Gene: FugateOSU_66 Start: 56611, Stop: 56252, Start Num: 42

Candidate Starts for FugateOSU_66:

(Start: 42 @56611 has 267 MA's), (50, 56551), (55, 56530), (66, 56458), (70, 56443), (89, 56383), (93, 56368), (100, 56329),

Gene: Funsized_65 Start: 58974, Stop: 58633, Start Num: 39

Candidate Starts for Funsized_65:

(Start: 39 @58974 has 3 MA's), (Start: 42 @58965 has 267 MA's), (49, 58920), (50, 58914), (58, 58866), (62, 58842), (66, 58821), (70, 58806), (84, 58782), (86, 58779), (94, 58752), (96, 58737), (103, 58707),

Gene: Gareth_65 Start: 56064, Stop: 55705, Start Num: 42

Candidate Starts for Gareth_65:

(Start: 24 @56130 has 34 MA's), (Start: 42 @56064 has 267 MA's), (54, 55986), (55, 55983), (66, 55911), (70, 55896), (89, 55836), (93, 55821), (100, 55782),

Gene: GeneCoco_66 Start: 56108, Stop: 55749, Start Num: 42

Candidate Starts for GeneCoco_66:

(Start: 42 @56108 has 267 MA's), (50, 56048), (55, 56027), (66, 55955), (70, 55940), (89, 55880), (93, 55865), (100, 55826),

Gene: GinPorsche_59 Start: 55729, Stop: 55442, Start Num: 42

Candidate Starts for GinPorsche_59:

(Start: 42 @55729 has 267 MA's), (45, 55711), (48, 55702), (60, 55615), (65, 55588), (85, 55555), (93, 55540), (96, 55519), (98, 55507), (103, 55489), (107, 55453),

Gene: Giraffe_65 Start: 56125, Stop: 55700, Start Num: 24

Candidate Starts for Giraffe_65:

(Start: 24 @56125 has 34 MA's), (Start: 42 @56059 has 267 MA's), (50, 55999), (54, 55981), (55, 55978), (66, 55906), (70, 55891), (89, 55831), (93, 55816), (100, 55777),

Gene: Gophee_66 Start: 56050, Stop: 55691, Start Num: 42

Candidate Starts for Gophee_66:

(Start: 24 @56116 has 34 MA's), (Start: 42 @56050 has 267 MA's), (54, 55972), (55, 55969), (66, 55897), (70, 55882), (89, 55822), (93, 55807), (100, 55768),

Gene: Grand2040_64 Start: 56053, Stop: 55694, Start Num: 42

Candidate Starts for Grand2040_64:

(Start: 24 @56119 has 34 MA's), (Start: 42 @56053 has 267 MA's), (54, 55975), (55, 55972), (66, 55900), (70, 55885), (89, 55825), (93, 55810), (100, 55771),

Gene: GreenChile_66 Start: 55587, Stop: 55228, Start Num: 42

Candidate Starts for GreenChile_66:

(Start: 42 @55587 has 267 MA's), (50, 55527), (55, 55506), (66, 55434), (70, 55419), (89, 55359), (93, 55344), (100, 55305),

Gene: Gwennie1_63 Start: 55664, Stop: 55305, Start Num: 42

Candidate Starts for Gwennie1_63:

(1, 55823), (Start: 5 @55808 has 1 MA's), (13, 55763), (Start: 42 @55664 has 267 MA's), (50, 55604), (55, 55583), (66, 55511), (70, 55496), (89, 55436), (93, 55421), (100, 55382),

Gene: Gwilliam_66 Start: 56524, Stop: 56099, Start Num: 24

Candidate Starts for Gwilliam_66:

(Start: 24 @56524 has 34 MA's), (Start: 42 @56458 has 267 MA's), (55, 56377), (66, 56305), (70, 56290), (89, 56230), (93, 56215), (100, 56176),

Gene: Gyarad_0064 Start: 55140, Stop: 54781, Start Num: 42

Candidate Starts for Gyarad_0064:

(1, 55299), (Start: 5 @55284 has 1 MA's), (13, 55239), (Start: 42 @55140 has 267 MA's), (54, 55062), (55, 55059), (66, 54987), (70, 54972), (89, 54912), (93, 54897), (100, 54858),

Gene: HSavage_63 Start: 55584, Stop: 55225, Start Num: 42

Candidate Starts for HSavage_63:

(Start: 42 @55584 has 267 MA's), (50, 55524), (55, 55503), (66, 55431), (70, 55416), (89, 55356), (93, 55341), (100, 55302),

Gene: Haimas_64 Start: 55627, Stop: 55142, Start Num: 9

Candidate Starts for Haimas_64:

(Start: 9 @55627 has 4 MA's), (Start: 27 @55561 has 8 MA's), (50, 55441), (55, 55420), (66, 55348), (70, 55333), (89, 55273), (93, 55258), (100, 55219),

Gene: Haleema_64 Start: 55605, Stop: 55246, Start Num: 42

Candidate Starts for Haleema_64:

(Start: 24 @55671 has 34 MA's), (Start: 42 @55605 has 267 MA's), (50, 55545), (54, 55527), (55, 55524), (66, 55452), (70, 55437), (89, 55377), (93, 55362), (100, 55323),

Gene: Hally898_58 Start: 55744, Stop: 55457, Start Num: 42

Candidate Starts for Hally898_58:

(Start: 42 @55744 has 267 MA's), (45, 55726), (48, 55717), (60, 55630), (65, 55603), (85, 55570), (93, 55555), (96, 55534), (98, 55522), (103, 55504), (107, 55468),

Gene: Hamish_63 Start: 55492, Stop: 55136, Start Num: 42

Candidate Starts for Hamish_63:

(26, 55549), (28, 55543), (Start: 42 @55492 has 267 MA's), (50, 55435), (55, 55414), (66, 55342), (70, 55327), (89, 55267), (93, 55252), (100, 55213),

Gene: Hangman_59 Start: 56818, Stop: 56531, Start Num: 42

Candidate Starts for Hangman_59:

(Start: 42 @56818 has 267 MA's), (45, 56800), (48, 56791), (60, 56704), (65, 56677), (93, 56629), (96, 56608), (98, 56596), (103, 56578), (107, 56542),

Gene: Happabalu_64 Start: 56447, Stop: 56088, Start Num: 42

Candidate Starts for Happabalu_64:

(1, 56606), (Start: 5 @56591 has 1 MA's), (13, 56546), (Start: 42 @56447 has 267 MA's), (50, 56387), (55, 56366), (66, 56294), (70, 56279), (89, 56219), (93, 56204), (100, 56165),

Gene: Hartsy_64 Start: 55745, Stop: 55386, Start Num: 42

Candidate Starts for Hartsy_64:

(Start: 42 @55745 has 267 MA's), (50, 55685), (55, 55664), (66, 55592), (70, 55577), (89, 55517), (93, 55502), (100, 55463),

Gene: Harvey_63 Start: 55588, Stop: 55229, Start Num: 42

Candidate Starts for Harvey_63:

(Start: 42 @55588 has 267 MA's), (54, 55510), (55, 55507), (66, 55435), (70, 55420), (89, 55360), (93, 55345), (100, 55306),

Gene: Hashim76_68 Start: 57352, Stop: 57008, Start Num: 37

Candidate Starts for Hashim76_68:

(Start: 37 @57352 has 3 MA's), (68, 57172), (70, 57166), (79, 57142), (93, 57109), (94, 57103),

Gene: Heath_58 Start: 56444, Stop: 56157, Start Num: 42

Candidate Starts for Heath_58:

(Start: 42 @56444 has 267 MA's), (45, 56426), (48, 56417), (60, 56330), (65, 56303), (93, 56255), (96, 56234), (98, 56222), (103, 56204), (107, 56168),

Gene: Hekos_63 Start: 55131, Stop: 54772, Start Num: 42

Candidate Starts for Hekos_63:

(1, 55290), (Start: 5 @55275 has 1 MA's), (13, 55230), (Start: 42 @55131 has 267 MA's), (54, 55053), (55, 55050), (66, 54978), (70, 54963), (89, 54903), (93, 54888), (100, 54849),

Gene: Held_64 Start: 55562, Stop: 55203, Start Num: 42

Candidate Starts for Held_64:

(Start: 42 @55562 has 267 MA's), (50, 55502), (55, 55481), (66, 55409), (70, 55394), (89, 55334), (93, 55319), (100, 55280),

Gene: HenryJackson_65 Start: 56088, Stop: 55729, Start Num: 42

Candidate Starts for HenryJackson_65:

(Start: 24 @56154 has 34 MA's), (Start: 42 @56088 has 267 MA's), (50, 56028), (55, 56007), (66, 55935), (70, 55920), (89, 55860), (93, 55845), (100, 55806),

Gene: Hertubise_64 Start: 55920, Stop: 55495, Start Num: 24

Candidate Starts for Hertubise_64:

(Start: 24 @55920 has 34 MA's), (Start: 42 @55854 has 267 MA's), (54, 55776), (55, 55773), (66, 55701), (70, 55686), (89, 55626), (93, 55611), (100, 55572),

Gene: Hetaeria_64 Start: 55860, Stop: 55435, Start Num: 24

Candidate Starts for Hetaeria_64:

(Start: 24 @55860 has 34 MA's), (Start: 42 @55794 has 267 MA's), (55, 55713), (66, 55641), (70, 55626), (89, 55566), (93, 55551), (100, 55512),

Gene: HighStump_67 Start: 56065, Stop: 55706, Start Num: 42

Candidate Starts for HighStump_67:

(Start: 42 @56065 has 267 MA's), (50, 56005), (55, 55984), (66, 55912), (70, 55897), (89, 55837), (93, 55822), (100, 55783),

Gene: Hocus_64 Start: 55549, Stop: 55190, Start Num: 42

Candidate Starts for Hocus_64:

(Start: 24 @55615 has 34 MA's), (Start: 42 @55549 has 267 MA's), (54, 55471), (55, 55468), (66, 55396), (70, 55381), (89, 55321), (93, 55306), (100, 55267),

Gene: HogWash_65 Start: 56439, Stop: 56080, Start Num: 42

Candidate Starts for HogWash_65:

(Start: 24 @56505 has 34 MA's), (Start: 42 @56439 has 267 MA's), (50, 56379), (55, 56358), (66, 56286), (70, 56271), (89, 56211), (93, 56196), (100, 56157),

Gene: Horchata_63 Start: 55584, Stop: 55225, Start Num: 42

Candidate Starts for Horchata_63:

(Start: 22 @55656 has 8 MA's), (26, 55641), (28, 55635), (Start: 42 @55584 has 267 MA's), (50, 55524), (55, 55503), (66, 55431), (70, 55416), (89, 55356), (93, 55341), (100, 55302),

Gene: Hosp_057 Start: 53377, Stop: 53018, Start Num: 42

Candidate Starts for Hosp_057:

(41, 53380), (Start: 42 @53377 has 267 MA's), (60, 53260), (71, 53209), (96, 53107),

Gene: Hydro_59 Start: 56795, Stop: 56508, Start Num: 42

Candidate Starts for Hydro_59:

(Start: 42 @56795 has 267 MA's), (45, 56777), (48, 56768), (60, 56681), (65, 56654), (93, 56606), (96, 56585), (98, 56573), (103, 56555), (107, 56519),

Gene: ImtiyazSitla_66 Start: 55792, Stop: 55433, Start Num: 42

Candidate Starts for ImtiyazSitla_66:

(Start: 42 @55792 has 267 MA's), (50, 55732), (55, 55711), (66, 55639), (70, 55624), (89, 55564), (93, 55549), (100, 55510),

Gene: Imvubu_59 Start: 55213, Stop: 54848, Start Num: 42

Candidate Starts for Imvubu_59:

(16, 55315), (17, 55309), (20, 55297), (21, 55294), (23, 55291), (Start: 42 @55213 has 267 MA's), (55, 55138), (58, 55111), (60, 55099), (66, 55066), (67, 55063), (70, 55051), (72, 55042), (88, 54997), (93, 54973), (94, 54967), (96, 54952), (100, 54934),

Gene: Inchworm_67 Start: 55943, Stop: 55584, Start Num: 42

Candidate Starts for Inchworm_67:

(Start: 42 @55943 has 267 MA's), (50, 55883), (55, 55862), (66, 55790), (70, 55775), (89, 55715), (93, 55700), (100, 55661),

Gene: Indlovu_62 Start: 57138, Stop: 56779, Start Num: 42

Candidate Starts for Indlovu_62:

(Start: 42 @57138 has 267 MA's), (58, 57033), (60, 57021), (64, 56997), (70, 56973), (91, 56904), (97, 56874), (100, 56859), (102, 56850),

Gene: Inverness_64 Start: 55592, Stop: 55233, Start Num: 42

Candidate Starts for Inverness_64:

(Start: 42 @55592 has 267 MA's), (50, 55532), (55, 55511), (66, 55439), (70, 55424), (89, 55364), (93, 55349), (100, 55310),

Gene: Iridessa_66 Start: 55511, Stop: 55152, Start Num: 42

Candidate Starts for Iridessa_66:

(Start: 42 @55511 has 267 MA's), (50, 55451), (55, 55430), (66, 55358), (70, 55343), (89, 55283), (93, 55268), (100, 55229),

Gene: Iridoclysis_65 Start: 55876, Stop: 55517, Start Num: 42

Candidate Starts for Iridoclysis_65:

(Start: 42 @55876 has 267 MA's), (50, 55816), (55, 55795), (66, 55723), (70, 55708), (89, 55648), (93, 55633), (100, 55594),

Gene: IsaacEli_66 Start: 56148, Stop: 55717, Start Num: 22

Candidate Starts for IsaacEli_66:

(Start: 22 @56148 has 8 MA's), (26, 56133), (28, 56127), (Start: 42 @56076 has 267 MA's), (50, 56016), (55, 55995), (66, 55923), (70, 55908), (89, 55848), (93, 55833), (100, 55794),

Gene: JAMaL_59 Start: 56836, Stop: 56549, Start Num: 42

Candidate Starts for JAMaL_59:

(Start: 42 @56836 has 267 MA's), (45, 56818), (48, 56809), (60, 56722), (65, 56695), (85, 56662), (93, 56647), (96, 56626), (98, 56614), (103, 56596), (107, 56560),

Gene: JDog_64 Start: 56098, Stop: 55739, Start Num: 42

Candidate Starts for JDog_64:

(Start: 24 @56164 has 34 MA's), (Start: 42 @56098 has 267 MA's), (50, 56038), (55, 56017), (66, 55945), (70, 55930), (89, 55870), (93, 55855), (100, 55816),

Gene: JacAttac_66 Start: 55538, Stop: 55179, Start Num: 42

Candidate Starts for JacAttac_66:

(Start: 42 @55538 has 267 MA's), (50, 55478), (55, 55457), (66, 55385), (70, 55370), (89, 55310), (93, 55295), (100, 55256),

Gene: JaguarMi_61 Start: 57862, Stop: 57575, Start Num: 42

Candidate Starts for JaguarMi_61:

(Start: 42 @57862 has 267 MA's), (45, 57844), (48, 57835), (57, 57763), (58, 57760), (65, 57721), (93, 57673), (96, 57652), (98, 57640), (103, 57622), (107, 57586),

Gene: JakeO_66 Start: 55821, Stop: 55462, Start Num: 42

Candidate Starts for JakeO_66:

(Start: 42 @55821 has 267 MA's), (50, 55761), (55, 55740), (66, 55668), (70, 55653), (89, 55593), (93, 55578), (100, 55539),

Gene: JangoPhett_65 Start: 55879, Stop: 55520, Start Num: 42

Candidate Starts for JangoPhett_65:

(Start: 42 @55879 has 267 MA's), (50, 55819), (55, 55798), (66, 55726), (70, 55711), (89, 55651), (93, 55636), (100, 55597),

Gene: Jesabah_67 Start: 56749, Stop: 56318, Start Num: 22

Candidate Starts for Jesabah_67:

(Start: 22 @56749 has 8 MA's), (26, 56734), (28, 56728), (Start: 42 @56677 has 267 MA's), (50, 56617), (55, 56596), (66, 56524), (70, 56509), (89, 56449), (93, 56434), (100, 56395),

Gene: Jillium_65 Start: 56083, Stop: 55724, Start Num: 42

Candidate Starts for Jillium_65:

(Start: 24 @56149 has 34 MA's), (Start: 42 @56083 has 267 MA's), (54, 56005), (55, 56002), (66, 55930), (70, 55915), (89, 55855), (93, 55840), (100, 55801),

Gene: Jiminy_66 Start: 55657, Stop: 55298, Start Num: 42

Candidate Starts for Jiminy_66:

(Start: 42 @55657 has 267 MA's), (50, 55597), (55, 55576), (66, 55504), (70, 55489), (89, 55429), (93, 55414), (100, 55375),

Gene: Jiraiya_66 Start: 55855, Stop: 55496, Start Num: 42

Candidate Starts for Jiraiya_66:

(Start: 24 @55921 has 34 MA's), (Start: 42 @55855 has 267 MA's), (50, 55795), (55, 55774), (66, 55702), (70, 55687), (89, 55627), (93, 55612), (100, 55573),

Gene: Jolie1_059 Start: 55277, Stop: 54930, Start Num: 42

Candidate Starts for Jolie1_059:

(41, 55280), (Start: 42 @55277 has 267 MA's), (60, 55160), (67, 55124), (96, 55007),

Gene: JoyceMaria_59 Start: 56698, Stop: 56411, Start Num: 42

Candidate Starts for JoyceMaria_59:

(Start: 42 @56698 has 267 MA's), (45, 56680), (48, 56671), (60, 56584), (65, 56557), (93, 56509), (96, 56488), (98, 56476), (103, 56458), (107, 56422),

Gene: KLucky39_63 Start: 55283, Stop: 54780, Start Num: 5

Candidate Starts for KLucky39_63:

(1, 55298), (Start: 5 @55283 has 1 MA's), (13, 55238), (Start: 42 @55139 has 267 MA's), (50, 55079), (55, 55058), (66, 54986), (70, 54971), (89, 54911), (93, 54896), (100, 54857),

Gene: Kahve_65 Start: 56085, Stop: 55726, Start Num: 42

Candidate Starts for Kahve_65:

(Start: 24 @56151 has 34 MA's), (Start: 42 @56085 has 267 MA's), (50, 56025), (55, 56004), (66, 55932), (70, 55917), (89, 55857), (93, 55842), (100, 55803),

Gene: Kailash_64 Start: 55983, Stop: 55624, Start Num: 42

Candidate Starts for Kailash_64:

(Start: 42 @55983 has 267 MA's), (50, 55923), (55, 55902), (66, 55830), (70, 55815), (89, 55755), (93, 55740), (100, 55701),

Gene: Kaleb_61 Start: 54461, Stop: 54201, Start Num: 52

Candidate Starts for Kaleb_61:

(47, 54503), (Start: 52 @54461 has 10 MA's), (63, 54395), (80, 54353), (98, 54269), (108, 54206),

Gene: KarasumaRum_64 Start: 57043, Stop: 56660, Start Num: 29

Candidate Starts for KarasumaRum_64:

(Start: 29 @57043 has 9 MA's), (76, 56833), (90, 56788), (92, 56779), (94, 56770), (99, 56740),

Gene: Karn_66 Start: 55817, Stop: 55458, Start Num: 42

Candidate Starts for Karn_66:

(Start: 42 @55817 has 267 MA's), (50, 55757), (55, 55736), (66, 55664), (70, 55649), (89, 55589), (93, 55574), (100, 55535),

Gene: Katniss_66 Start: 55523, Stop: 55164, Start Num: 42

Candidate Starts for Katniss_66:

(Start: 42 @55523 has 267 MA's), (50, 55463), (55, 55442), (66, 55370), (70, 55355), (89, 55295), (93, 55280), (100, 55241),

Gene: KayaCho_59 Start: 55392, Stop: 55051, Start Num: 42

Candidate Starts for KayaCho_59:

(Start: 42 @55392 has 267 MA's), (60, 55275), (67, 55239), (69, 55230), (71, 55224), (77, 55203), (96, 55128),

Gene: Keitherie_67 Start: 56146, Stop: 55787, Start Num: 42

Candidate Starts for Keitherie_67:

(Start: 22 @56218 has 8 MA's), (26, 56203), (28, 56197), (Start: 42 @56146 has 267 MA's), (50, 56086), (55, 56065), (66, 55993), (70, 55978), (89, 55918), (93, 55903), (100, 55864),

Gene: Khan1_66 Start: 56041, Stop: 55682, Start Num: 42

Candidate Starts for Khan1_66:

(Start: 24 @56107 has 34 MA's), (Start: 42 @56041 has 267 MA's), (54, 55963), (55, 55960), (66, 55888), (70, 55873), (89, 55813), (93, 55798), (100, 55759),

Gene: Kikipoo_66 Start: 56148, Stop: 55717, Start Num: 22

Candidate Starts for Kikipoo_66:

(Start: 22 @56148 has 8 MA's), (26, 56133), (28, 56127), (Start: 42 @56076 has 267 MA's), (50, 56016), (55, 55995), (66, 55923), (70, 55908), (89, 55848), (93, 55833), (100, 55794),

Gene: Kimbrough_66 Start: 56126, Stop: 55767, Start Num: 42

Candidate Starts for Kimbrough_66:

(Start: 24 @56192 has 34 MA's), (Start: 42 @56126 has 267 MA's), (50, 56066), (55, 56045), (66, 55973), (70, 55958), (89, 55898), (93, 55883), (100, 55844),

Gene: KingTut_57 Start: 52290, Stop: 51931, Start Num: 42

Candidate Starts for KingTut_57:

(Start: 42 @52290 has 267 MA's), (50, 52230), (55, 52209), (66, 52137), (70, 52122), (89, 52062), (93, 52047), (100, 52008),

Gene: KingVeVeVe_64 Start: 55093, Stop: 54734, Start Num: 42

Candidate Starts for KingVeVeVe_64:

(Start: 42 @55093 has 267 MA's), (50, 55033), (55, 55012), (66, 54940), (70, 54925), (89, 54865), (93, 54850), (100, 54811),

Gene: KlimbOn_65 Start: 55584, Stop: 55225, Start Num: 42

Candidate Starts for KlimbOn_65:

(Start: 42 @55584 has 267 MA's), (50, 55524), (55, 55503), (66, 55431), (70, 55416), (89, 55356), (93, 55341), (100, 55302),

Gene: Kloppinator_66 Start: 55735, Stop: 55376, Start Num: 42

Candidate Starts for Kloppinator_66:

(Start: 42 @55735 has 267 MA's), (50, 55675), (55, 55654), (66, 55582), (70, 55567), (89, 55507), (93, 55492), (100, 55453),

Gene: Knocker_64 Start: 58158, Stop: 57814, Start Num: 42

Candidate Starts for Knocker_64:

(Start: 42 @58158 has 267 MA's), (66, 58014), (78, 57981), (81, 57975), (94, 57933), (98, 57906),

Gene: Kolhan_62 Start: 54340, Stop: 54080, Start Num: 52

Candidate Starts for Kolhan_62:

(10, 54535), (11, 54529), (31, 54454), (34, 54442), (35, 54433), (47, 54382), (Start: 52 @54340 has 10 MA's), (63, 54274), (80, 54232), (98, 54148), (108, 54085),

Gene: Kwadwo_64 Start: 55536, Stop: 55177, Start Num: 42

Candidate Starts for Kwadwo_64:

(Start: 24 @55602 has 34 MA's), (Start: 42 @55536 has 267 MA's), (54, 55458), (55, 55455), (66, 55383), (70, 55368), (89, 55308), (93, 55293), (100, 55254),

Gene: Kwksand96_66 Start: 55672, Stop: 55313, Start Num: 42

Candidate Starts for Kwksand96_66:

(Start: 42 @55672 has 267 MA's), (50, 55612), (55, 55591), (66, 55519), (70, 55504), (89, 55444), (93, 55429), (100, 55390),

Gene: Labeouficaum_66 Start: 55660, Stop: 55301, Start Num: 42

Candidate Starts for Labeouficaum_66:

(Start: 42 @55660 has 267 MA's), (55, 55579), (66, 55507), (70, 55492), (89, 55432), (93, 55417), (100, 55378),

Gene: Lambano_58 Start: 55744, Stop: 55457, Start Num: 42

Candidate Starts for Lambano_58:

(Start: 42 @55744 has 267 MA's), (45, 55726), (48, 55717), (60, 55630), (65, 55603), (85, 55570), (93, 55555), (96, 55534), (98, 55522), (103, 55504), (107, 55468),

Gene: Lars_62 Start: 54438, Stop: 54178, Start Num: 52

Candidate Starts for Lars_62:

(47, 54480), (Start: 52 @54438 has 10 MA's), (63, 54372), (80, 54330), (98, 54246), (108, 54183),

Gene: Larson_69 Start: 55876, Stop: 55517, Start Num: 42

Candidate Starts for Larson_69:

(Start: 42 @55876 has 267 MA's), (50, 55816), (55, 55795), (66, 55723), (70, 55708), (89, 55648), (93, 55633), (100, 55594),

Gene: LasagnaCat_67 Start: 55955, Stop: 55596, Start Num: 42

Candidate Starts for LasagnaCat_67:

(Start: 42 @55955 has 267 MA's), (50, 55895), (55, 55874), (66, 55802), (70, 55787), (89, 55727), (93, 55712), (100, 55673),

Gene: Lasso_65 Start: 55811, Stop: 55452, Start Num: 42

Candidate Starts for Lasso_65:

(Start: 22 @55883 has 8 MA's), (26, 55868), (28, 55862), (Start: 42 @55811 has 267 MA's), (54, 55733), (55, 55730), (66, 55658), (70, 55643), (89, 55583), (93, 55568), (100, 55529),

Gene: LeeLot_65 Start: 56166, Stop: 55807, Start Num: 42

Candidate Starts for LeeLot_65:

(Start: 42 @56166 has 267 MA's), (50, 56106), (55, 56085), (66, 56013), (70, 55998), (89, 55938), (93, 55923), (100, 55884),

Gene: Lego3393_63 Start: 56186, Stop: 55758, Start Num: 24

Candidate Starts for Lego3393_63:

(Start: 24 @56186 has 34 MA's), (Start: 42 @56117 has 267 MA's), (50, 56057), (55, 56036), (66, 55964), (70, 55949), (89, 55889), (93, 55874), (100, 55835),

Gene: Legolas_67 Start: 55905, Stop: 55546, Start Num: 42

Candidate Starts for Legolas_67:

(Start: 42 @55905 has 267 MA's), (50, 55845), (55, 55824), (66, 55752), (70, 55737), (89, 55677), (93, 55662), (100, 55623),

Gene: Lehmann_66 Start: 55738, Stop: 55319, Start Num: 27

Candidate Starts for Lehmann_66:

(Start: 27 @55738 has 8 MA's), (Start: 42 @55678 has 267 MA's), (50, 55618), (55, 55597), (66, 55525), (70, 55510), (89, 55450), (93, 55435), (100, 55396),

Gene: LeiMonet_68 Start: 56029, Stop: 55670, Start Num: 42

Candidate Starts for LeiMonet_68:

(Start: 24 @56095 has 34 MA's), (Start: 42 @56029 has 267 MA's), (50, 55969), (55, 55948), (66, 55876), (70, 55861), (89, 55801), (93, 55786), (100, 55747),

Gene: LemonSlice_66 Start: 55556, Stop: 55137, Start Num: 27

Candidate Starts for LemonSlice_66:

(Start: 27 @55556 has 8 MA's), (50, 55436), (55, 55415), (66, 55343), (70, 55328), (89, 55268), (93, 55253), (100, 55214),

Gene: LilMcDreamy_62 Start: 56755, Stop: 56402, Start Num: 38

Candidate Starts for LilMcDreamy_62:

(Start: 38 @56755 has 1 MA's), (66, 56593), (70, 56578), (92, 56509), (93, 56506), (94, 56500), (100, 56467),

Gene: LilSmirk_61 Start: 54333, Stop: 54073, Start Num: 52

Candidate Starts for LilSmirk_61:

(47, 54375), (Start: 52 @54333 has 10 MA's), (63, 54267), (80, 54225), (98, 54141), (108, 54078),

Gene: LittleDigger_58 Start: 55754, Stop: 55467, Start Num: 42

Candidate Starts for LittleDigger_58:

(Start: 42 @55754 has 267 MA's), (45, 55736), (48, 55727), (60, 55640), (65, 55613), (85, 55580), (93, 55565), (96, 55544), (98, 55532), (103, 55514), (107, 55478),

Gene: LittleMinkey_72 Start: 57283, Stop: 56945, Start Num: 37

Candidate Starts for LittleMinkey_72:

(Start: 37 @57283 has 3 MA's), (54, 57196), (66, 57121), (94, 57040), (96, 57025), (100, 57007),

Gene: Lolalove_60 Start: 56775, Stop: 56488, Start Num: 42

Candidate Starts for Lolalove_60:

(Start: 42 @56775 has 267 MA's), (45, 56757), (48, 56748), (50, 56721), (60, 56661), (65, 56634), (93, 56586), (96, 56565), (98, 56553), (103, 56535), (107, 56499),

Gene: Longacauda_66 Start: 55932, Stop: 55573, Start Num: 42

Candidate Starts for Longacauda_66:

(Start: 24 @55998 has 34 MA's), (Start: 42 @55932 has 267 MA's), (50, 55872), (55, 55851), (66, 55779), (70, 55764), (89, 55704), (93, 55689), (100, 55650),

Gene: Lopsy_63 Start: 55224, Stop: 54865, Start Num: 42

Candidate Starts for Lopsy_63:

(Start: 42 @55224 has 267 MA's), (50, 55164), (55, 55143), (66, 55071), (70, 55056), (89, 54996), (93, 54981), (100, 54942),

Gene: LostAndPhound_65 Start: 56110, Stop: 55751, Start Num: 42

Candidate Starts for LostAndPhound_65:

(Start: 42 @56110 has 267 MA's), (50, 56050), (55, 56029), (66, 55957), (70, 55942), (89, 55882), (93, 55867), (100, 55828),

Gene: LuckyMarjie_63 Start: 55286, Stop: 54927, Start Num: 42

Candidate Starts for LuckyMarjie_63:

(Start: 24 @55352 has 34 MA's), (Start: 42 @55286 has 267 MA's), (54, 55208), (55, 55205), (66, 55133), (70, 55118), (89, 55058), (93, 55043), (100, 55004),

Gene: Lulumae_62 Start: 55337, Stop: 54912, Start Num: 24

Candidate Starts for Lulumae_62:

(Start: 24 @55337 has 34 MA's), (Start: 42 @55271 has 267 MA's), (54, 55193), (55, 55190), (66, 55118), (70, 55103), (89, 55043), (93, 55028), (100, 54989),

Gene: Lulwa_63 Start: 54868, Stop: 54509, Start Num: 42

Candidate Starts for Lulwa_63:

(Start: 22 @54940 has 8 MA's), (26, 54925), (28, 54919), (Start: 42 @54868 has 267 MA's), (54, 54790), (55, 54787), (66, 54715), (70, 54700), (89, 54640), (93, 54625), (100, 54586),

Gene: Lumine_66 Start: 55755, Stop: 55396, Start Num: 42

Candidate Starts for Lumine_66:

(Start: 24 @55821 has 34 MA's), (Start: 42 @55755 has 267 MA's), (55, 55674), (66, 55602), (70, 55587), (89, 55527), (93, 55512), (100, 55473),

Gene: MRabcd_65 Start: 55879, Stop: 55520, Start Num: 42

Candidate Starts for MRabcd_65:

(Start: 42 @55879 has 267 MA's), (50, 55819), (55, 55798), (66, 55726), (70, 55711), (89, 55651), (93, 55636), (100, 55597),

Gene: Mag7_64 Start: 55527, Stop: 55168, Start Num: 42

Candidate Starts for Mag7_64:

(Start: 42 @55527 has 267 MA's), (50, 55467), (55, 55446), (66, 55374), (70, 55359), (89, 55299), (93, 55284), (100, 55245),

Gene: Magic8_66 Start: 55874, Stop: 55515, Start Num: 42

Candidate Starts for Magic8_66:

(Start: 42 @55874 has 267 MA's), (50, 55814), (55, 55793), (66, 55721), (70, 55706), (89, 55646), (93, 55631), (100, 55592),

Gene: Magpie_58 Start: 56700, Stop: 56413, Start Num: 42

Candidate Starts for Magpie_58:

(Start: 42 @56700 has 267 MA's), (45, 56682), (48, 56673), (60, 56586), (65, 56559), (93, 56511), (96, 56490), (98, 56478), (103, 56460), (107, 56424),

Gene: Mana_64 Start: 55551, Stop: 55192, Start Num: 42

Candidate Starts for Mana_64:

(Start: 42 @55551 has 267 MA's), (50, 55491), (55, 55470), (66, 55398), (70, 55383), (89, 55323), (93, 55308), (100, 55269),

Gene: Manad_64 Start: 55836, Stop: 55477, Start Num: 42

Candidate Starts for Manad_64:

(Start: 42 @55836 has 267 MA's), (50, 55776), (55, 55755), (66, 55683), (70, 55668), (89, 55608), (93, 55593), (100, 55554),

Gene: Maru_65 Start: 55991, Stop: 55632, Start Num: 42

Candidate Starts for Maru_65:

(Start: 42 @55991 has 267 MA's), (50, 55931), (55, 55910), (66, 55838), (70, 55823), (89, 55763), (93, 55748), (100, 55709),

Gene: Maskar_66 Start: 55792, Stop: 55433, Start Num: 42

Candidate Starts for Maskar_66:

(Start: 42 @55792 has 267 MA's), (50, 55732), (55, 55711), (66, 55639), (70, 55624), (89, 55564), (93, 55549), (100, 55510),

Gene: MasterPo_62 Start: 54329, Stop: 54069, Start Num: 52

Candidate Starts for MasterPo_62:

(47, 54371), (Start: 52 @54329 has 10 MA's), (63, 54263), (80, 54221), (98, 54137), (108, 54074),

Gene: Matalotodo_64 Start: 56103, Stop: 55744, Start Num: 42

Candidate Starts for Matalotodo_64:

(1, 56262), (Start: 5 @56247 has 1 MA's), (13, 56202), (Start: 42 @56103 has 267 MA's), (55, 56022), (66, 55950), (70, 55935), (89, 55875), (93, 55860), (100, 55821),

Gene: Mcshane_64 Start: 55615, Stop: 55190, Start Num: 24

Candidate Starts for Mcshane_64:

(Start: 24 @55615 has 34 MA's), (Start: 42 @55549 has 267 MA's), (54, 55471), (55, 55468), (66, 55396), (70, 55381), (89, 55321), (93, 55306), (100, 55267),

Gene: Mecca_65 Start: 56114, Stop: 55755, Start Num: 42

Candidate Starts for Mecca_65:

(Start: 24 @56180 has 34 MA's), (Start: 42 @56114 has 267 MA's), (54, 56036), (55, 56033), (66, 55961), (70, 55946), (89, 55886), (93, 55871), (100, 55832),

Gene: Megamind20_66 Start: 55603, Stop: 55178, Start Num: 24

Candidate Starts for Megamind20_66:

(Start: 24 @55603 has 34 MA's), (Start: 42 @55537 has 267 MA's), (54, 55459), (55, 55456), (66, 55384), (70, 55369), (89, 55309), (93, 55294), (100, 55255),

Gene: Megatron_65 Start: 56130, Stop: 55705, Start Num: 24

Candidate Starts for Megatron_65:

(Start: 24 @56130 has 34 MA's), (Start: 42 @56064 has 267 MA's), (50, 56004), (55, 55983), (66, 55911), (70, 55896), (89, 55836), (93, 55821), (100, 55782),

Gene: Melc17_63 Start: 56192, Stop: 55833, Start Num: 42

Candidate Starts for Melc17_63:

(Start: 42 @56192 has 267 MA's), (50, 56132), (55, 56111), (66, 56039), (70, 56024), (89, 55964), (93, 55949), (100, 55910),

Gene: MelsMeow_65 Start: 55845, Stop: 55486, Start Num: 42

Candidate Starts for MelsMeow_65:

(Start: 42 @55845 has 267 MA's), (50, 55785), (55, 55764), (66, 55692), (70, 55677), (89, 55617), (93, 55602), (100, 55563),

Gene: Mesh1_66 Start: 56127, Stop: 55768, Start Num: 42

Candidate Starts for Mesh1_66:

(Start: 42 @56127 has 267 MA's), (54, 56049), (55, 56046), (66, 55974), (70, 55959), (89, 55899), (93, 55884), (100, 55845),

Gene: Mesmerelda_64 Start: 56107, Stop: 55748, Start Num: 42

Candidate Starts for Mesmerelda_64:

(Start: 24 @56173 has 34 MA's), (Start: 42 @56107 has 267 MA's), (50, 56047), (54, 56029), (55, 56026), (66, 55954), (70, 55939), (89, 55879), (93, 55864), (100, 55825),

Gene: MichaelPhcott_64 Start: 55524, Stop: 55165, Start Num: 42

Candidate Starts for MichaelPhcott_64:

(Start: 42 @55524 has 267 MA's), (50, 55464), (55, 55443), (66, 55371), (70, 55356), (89, 55296), (93, 55281), (100, 55242),

Gene: Mikota_63 Start: 55090, Stop: 54731, Start Num: 42

Candidate Starts for Mikota_63:

(Start: 42 @55090 has 267 MA's), (50, 55030), (55, 55009), (66, 54937), (70, 54922), (89, 54862), (93, 54847), (100, 54808),

Gene: MiniBoss_63 Start: 54896, Stop: 54537, Start Num: 42

Candidate Starts for MiniBoss_63:

(Start: 42 @54896 has 267 MA's), (50, 54836), (55, 54815), (66, 54743), (70, 54728), (89, 54668), (93, 54653), (100, 54614),

Gene: MitKao_65 Start: 55561, Stop: 55202, Start Num: 42

Candidate Starts for MitKao_65:

(Start: 42 @55561 has 267 MA's), (50, 55501), (55, 55480), (66, 55408), (70, 55393), (89, 55333), (93, 55318), (100, 55279),

Gene: Mithril_59 Start: 56913, Stop: 56620, Start Num: 40

Candidate Starts for Mithril_59:

(20, 56994), (30, 56952), (32, 56946), (Start: 40 @56913 has 1 MA's), (Start: 42 @56907 has 267 MA's), (45, 56889), (48, 56880), (58, 56805), (60, 56793), (65, 56766), (93, 56718), (94, 56712), (96, 56697), (98, 56685), (103, 56667), (107, 56631),

Gene: Morgushi_64 Start: 55550, Stop: 55191, Start Num: 42

Candidate Starts for Morgushi_64:

(Start: 42 @55550 has 267 MA's), (50, 55490), (55, 55469), (66, 55397), (70, 55382), (89, 55322), (93, 55307), (100, 55268),

Gene: Morty_66 Start: 56144, Stop: 55719, Start Num: 24

Candidate Starts for Morty_66:

(Start: 24 @56144 has 34 MA's), (Start: 42 @56078 has 267 MA's), (50, 56018), (55, 55997), (66, 55925), (70, 55910), (89, 55850), (93, 55835), (100, 55796),

Gene: Mosaic_63 Start: 55555, Stop: 55196, Start Num: 42

Candidate Starts for Mosaic_63:

(Start: 42 @55555 has 267 MA's), (50, 55495), (55, 55474), (66, 55402), (70, 55387), (89, 55327), (93, 55312), (100, 55273),

Gene: MrPhizzler_68 Start: 56018, Stop: 55659, Start Num: 42

Candidate Starts for MrPhizzler_68:

(Start: 24 @56084 has 34 MA's), (Start: 42 @56018 has 267 MA's), (54, 55940), (55, 55937), (66, 55865), (70, 55850), (89, 55790), (93, 55775), (100, 55736),

Gene: Mudslide_59 Start: 57040, Stop: 56753, Start Num: 42

Candidate Starts for Mudslide_59:

(Start: 42 @57040 has 267 MA's), (45, 57022), (48, 57013), (60, 56926), (65, 56899), (93, 56851), (96, 56830), (98, 56818), (103, 56800), (107, 56764),

Gene: Mulan_65 Start: 55789, Stop: 55430, Start Num: 42

Candidate Starts for Mulan_65:

(Start: 24 @55858 has 34 MA's), (Start: 42 @55789 has 267 MA's), (50, 55729), (55, 55708), (66, 55636), (70, 55621), (89, 55561), (93, 55546), (100, 55507),

Gene: Murdoc_63 Start: 55551, Stop: 55192, Start Num: 42

Candidate Starts for Murdoc_63:

(1, 55710), (Start: 5 @55695 has 1 MA's), (13, 55650), (Start: 42 @55551 has 267 MA's), (50, 55491), (54, 55473), (55, 55470), (66, 55398), (70, 55383), (89, 55323), (93, 55308), (100, 55269),

Gene: Mutante_65 Start: 55627, Stop: 55202, Start Num: 24

Candidate Starts for Mutante_65:

(Start: 24 @55627 has 34 MA's), (Start: 42 @55561 has 267 MA's), (50, 55501), (55, 55480), (66, 55408), (70, 55393), (89, 55333), (93, 55318), (100, 55279),

Gene: Mysterious_62 Start: 57001, Stop: 56651, Start Num: 43

Candidate Starts for Mysterious_62:

(Start: 29 @57061 has 9 MA's), (Start: 39 @57019 has 3 MA's), (Start: 43 @57001 has 1 MA's), (44, 56995), (69, 56848), (90, 56779), (92, 56770), (94, 56761), (99, 56731),

Gene: Nacho_0067 Start: 56309, Stop: 55950, Start Num: 42

Candidate Starts for Nacho_0067:

(1, 56468), (Start: 5 @56453 has 1 MA's), (13, 56408), (Start: 42 @56309 has 267 MA's), (50, 56249), (55, 56228), (66, 56156), (70, 56141), (89, 56081), (93, 56066), (100, 56027),

Gene: Nanao_58 Start: 55734, Stop: 55447, Start Num: 42

Candidate Starts for Nanao_58:

(Start: 42 @55734 has 267 MA's), (45, 55716), (48, 55707), (60, 55620), (65, 55593), (85, 55560), (93, 55545), (96, 55524), (98, 55512), (103, 55494), (107, 55458),

Gene: Nangang_64 Start: 57223, Stop: 56840, Start Num: 29

Candidate Starts for Nangang_64:

(Start: 29 @57223 has 9 MA's), (76, 57013), (90, 56968), (92, 56959), (94, 56950), (99, 56920),

Gene: Nathan_66 Start: 55642, Stop: 55283, Start Num: 42

Candidate Starts for Nathan_66:

(1, 55798), (Start: 5 @55783 has 1 MA's), (13, 55738), (Start: 42 @55642 has 267 MA's), (50, 55582), (55, 55561), (66, 55489), (70, 55474), (89, 55414), (93, 55399), (100, 55360),

Gene: Nehemiah_63 Start: 57022, Stop: 56654, Start Num: 39

Candidate Starts for Nehemiah_63:

(Start: 29 @57064 has 9 MA's), (Start: 39 @57022 has 3 MA's), (Start: 43 @57004 has 1 MA's), (44, 56998), (69, 56851), (90, 56782), (92, 56773), (94, 56764), (99, 56734),

Gene: Newman_63 Start: 55587, Stop: 55228, Start Num: 42

Candidate Starts for Newman_63:

(1, 55746), (Start: 5 @55731 has 1 MA's), (13, 55686), (Start: 42 @55587 has 267 MA's), (50, 55527), (55, 55506), (66, 55434), (70, 55419), (89, 55359), (93, 55344), (100, 55305),

Gene: NiaNia_67 Start: 55584, Stop: 55225, Start Num: 42

Candidate Starts for NiaNia_67:

(Start: 24 @55650 has 34 MA's), (Start: 42 @55584 has 267 MA's), (50, 55524), (54, 55506), (55, 55503), (66, 55431), (70, 55416), (89, 55356), (93, 55341), (100, 55302),

Gene: Nicole21_66 Start: 55840, Stop: 55481, Start Num: 42

Candidate Starts for Nicole21_66:

(Start: 24 @55906 has 34 MA's), (Start: 42 @55840 has 267 MA's), (50, 55780), (54, 55762), (55, 55759), (66, 55687), (70, 55672), (89, 55612), (93, 55597), (100, 55558),

Gene: Nigel_59 Start: 55848, Stop: 55561, Start Num: 42

Candidate Starts for Nigel_59:

(Start: 42 @55848 has 267 MA's), (48, 55821), (51, 55788), (55, 55773), (58, 55746), (59, 55743), (60, 55734), (65, 55707), (66, 55701), (93, 55659), (103, 55608),

Gene: Nova1_66 Start: 55712, Stop: 55353, Start Num: 42

Candidate Starts for Nova1_66:

(Start: 42 @55712 has 267 MA's), (50, 55652), (55, 55631), (66, 55559), (70, 55544), (89, 55484), (93, 55469), (100, 55430),

Gene: Numberten_64 Start: 55850, Stop: 55425, Start Num: 24

Candidate Starts for Numberten_64:

(Start: 24 @55850 has 34 MA's), (Start: 42 @55784 has 267 MA's), (54, 55706), (55, 55703), (66, 55631), (70, 55616), (89, 55556), (93, 55541), (100, 55502),

Gene: Nyala_64 Start: 55559, Stop: 55200, Start Num: 42

Candidate Starts for Nyala_64:

(Start: 24 @55625 has 34 MA's), (Start: 42 @55559 has 267 MA's), (50, 55499), (54, 55481), (55, 55478), (66, 55406), (70, 55391), (89, 55331), (93, 55316), (100, 55277),

Gene: OSmaximus_66 Start: 56305, Stop: 55946, Start Num: 42

Candidate Starts for OSmaximus_66:

(Start: 42 @56305 has 267 MA's), (50, 56245), (55, 56224), (66, 56152), (70, 56137), (89, 56077), (93, 56062), (100, 56023),

Gene: Olak_64 Start: 55562, Stop: 55203, Start Num: 42

Candidate Starts for Olak_64:

(Start: 42 @55562 has 267 MA's), (50, 55502), (55, 55481), (66, 55409), (70, 55394), (89, 55334), (93, 55319), (100, 55280),

Gene: Oline_65 Start: 55790, Stop: 55305, Start Num: 9

Candidate Starts for Oline_65:

(Start: 9 @55790 has 4 MA's), (Start: 27 @55724 has 8 MA's), (54, 55586), (55, 55583), (66, 55511), (70, 55496), (89, 55436), (93, 55421), (100, 55382),

Gene: Olive_65 Start: 55775, Stop: 55416, Start Num: 42

Candidate Starts for Olive_65:

(Start: 42 @55775 has 267 MA's), (50, 55715), (55, 55694), (66, 55622), (70, 55607), (89, 55547), (93, 55532), (100, 55493),

Gene: OliverWalter_63 Start: 55594, Stop: 55235, Start Num: 42

Candidate Starts for OliverWalter_63:

(1, 55753), (Start: 5 @55738 has 1 MA's), (13, 55693), (Start: 42 @55594 has 267 MA's), (50, 55534), (55, 55513), (66, 55441), (70, 55426), (89, 55366), (93, 55351), (100, 55312),

Gene: Omniscient_66 Start: 56422, Stop: 56063, Start Num: 42

Candidate Starts for Omniscient_66:

(Start: 24 @56488 has 34 MA's), (Start: 42 @56422 has 267 MA's), (54, 56344), (55, 56341), (66, 56269), (70, 56254), (89, 56194), (93, 56179), (100, 56140),

Gene: OneBrain_68 Start: 55826, Stop: 55467, Start Num: 42

Candidate Starts for OneBrain_68:

(Start: 42 @55826 has 267 MA's), (50, 55766), (55, 55745), (66, 55673), (70, 55658), (89, 55598), (93, 55583), (100, 55544),

Gene: Oosterbaan_64 Start: 55907, Stop: 55482, Start Num: 24

Candidate Starts for Oosterbaan_64:

(Start: 24 @55907 has 34 MA's), (Start: 42 @55841 has 267 MA's), (54, 55763), (55, 55760), (66, 55688), (70, 55673), (89, 55613), (93, 55598), (100, 55559),

Gene: Orfeu_64 Start: 56098, Stop: 55739, Start Num: 42

Candidate Starts for Orfeu_64:

(Start: 24 @56164 has 34 MA's), (Start: 42 @56098 has 267 MA's), (54, 56020), (55, 56017), (66, 55945), (70, 55930), (89, 55870), (93, 55855), (100, 55816),

Gene: Orion_66 Start: 55569, Stop: 55144, Start Num: 24

Candidate Starts for Orion_66:

(Start: 24 @55569 has 34 MA's), (Start: 42 @55503 has 267 MA's), (54, 55425), (55, 55422), (66, 55350), (70, 55335), (89, 55275), (93, 55260), (100, 55221),

Gene: Orwigg_64 Start: 55483, Stop: 55124, Start Num: 42

Candidate Starts for Orwigg_64:

(Start: 24 @55549 has 34 MA's), (Start: 42 @55483 has 267 MA's), (50, 55423), (55, 55402), (66, 55330), (70, 55315), (89, 55255), (93, 55240), (100, 55201),

Gene: PG1_65 Start: 56140, Stop: 55715, Start Num: 24

Candidate Starts for PG1_65:

(Start: 24 @56140 has 34 MA's), (Start: 42 @56074 has 267 MA's), (54, 55996), (55, 55993), (66, 55921), (70, 55906), (89, 55846), (93, 55831), (100, 55792),

Gene: Pacifista_64 Start: 55558, Stop: 55199, Start Num: 42

Candidate Starts for Pacifista_64:

(Start: 24 @55624 has 34 MA's), (Start: 42 @55558 has 267 MA's), (54, 55480), (55, 55477), (66, 55405), (70, 55390), (89, 55330), (93, 55315), (100, 55276),

Gene: PallasAthena_67 Start: 55633, Stop: 55208, Start Num: 24

Candidate Starts for PallasAthena_67:

(Start: 24 @55633 has 34 MA's), (Start: 42 @55567 has 267 MA's), (50, 55507), (54, 55489), (55, 55486), (66, 55414), (70, 55399), (89, 55339), (93, 55324), (100, 55285),

Gene: PenguinLover67_61 Start: 56708, Stop: 56340, Start Num: 42

Candidate Starts for PenguinLover67_61:

(Start: 42 @56708 has 267 MA's), (58, 56609), (87, 56513), (93, 56486), (98, 56453), (101, 56444), (106, 56417), (111, 56363),

Gene: Phamished_67 Start: 55840, Stop: 55412, Start Num: 24

Candidate Starts for Phamished_67:

(Start: 24 @55840 has 34 MA's), (Start: 42 @55771 has 267 MA's), (50, 55711), (55, 55690), (66, 55618), (70, 55603), (89, 55543), (93, 55528), (100, 55489),

Gene: Phareon_64 Start: 55280, Stop: 54921, Start Num: 42

Candidate Starts for Phareon_64:

(Start: 42 @55280 has 267 MA's), (50, 55220), (55, 55199), (66, 55127), (70, 55112), (89, 55052), (93, 55037), (100, 54998),

Gene: PhatCats2014_65 Start: 56145, Stop: 55720, Start Num: 24

Candidate Starts for PhatCats2014_65:

(Start: 24 @56145 has 34 MA's), (Start: 42 @56079 has 267 MA's), (54, 56001), (55, 55998), (66, 55926), (70, 55911), (89, 55851), (93, 55836), (100, 55797),

Gene: PhatLouie_67 Start: 56097, Stop: 55738, Start Num: 42

Candidate Starts for PhatLouie_67:

(Start: 22 @56169 has 8 MA's), (26, 56154), (28, 56148), (Start: 42 @56097 has 267 MA's), (50, 56037), (55, 56016), (66, 55944), (70, 55929), (89, 55869), (93, 55854), (100, 55815),

Gene: Phelemich_62 Start: 57018, Stop: 56650, Start Num: 39

Candidate Starts for Phelemich_62:

(2, 57168), (21, 57090), (Start: 29 @57060 has 9 MA's), (Start: 39 @57018 has 3 MA's), (Start: 43 @57000 has 1 MA's), (44, 56994), (69, 56847), (90, 56778), (92, 56769), (94, 56760), (99, 56730),

Gene: PhenghisKhan_66 Start: 55729, Stop: 55370, Start Num: 42

Candidate Starts for PhenghisKhan_66:

(Start: 42 @55729 has 267 MA's), (50, 55669), (55, 55648), (66, 55576), (70, 55561), (89, 55501), (93, 55486), (100, 55447),

Gene: Pherdinand_66 Start: 55842, Stop: 55483, Start Num: 42

Candidate Starts for Pherdinand_66:

(Start: 42 @55842 has 267 MA's), (50, 55782), (55, 55761), (66, 55689), (70, 55674), (89, 55614), (93, 55599), (100, 55560),

Gene: Phergie_66 Start: 55721, Stop: 55362, Start Num: 42

Candidate Starts for Phergie_66:

(Start: 42 @55721 has 267 MA's), (50, 55661), (55, 55640), (66, 55568), (70, 55553), (89, 55493), (93, 55478), (100, 55439),

Gene: Phipps_65 Start: 55351, Stop: 54992, Start Num: 42

Candidate Starts for Phipps_65:

(1, 55510), (Start: 5 @55495 has 1 MA's), (13, 55450), (Start: 42 @55351 has 267 MA's), (54, 55273), (55, 55270), (66, 55198), (70, 55183), (89, 55123), (93, 55108), (100, 55069),

Gene: Phleuron_64 Start: 55527, Stop: 55168, Start Num: 42

Candidate Starts for Phleuron_64:

(Start: 42 @55527 has 267 MA's), (50, 55467), (55, 55446), (66, 55374), (70, 55359), (89, 55299), (93, 55284), (100, 55245),

Gene: PhrankReynolds_65 Start: 55726, Stop: 55367, Start Num: 42

Candidate Starts for PhrankReynolds_65:

(Start: 42 @55726 has 267 MA's), (50, 55666), (55, 55645), (66, 55573), (70, 55558), (89, 55498), (93, 55483), (100, 55444),

Gene: PhrodoBaggins_66 Start: 55946, Stop: 55587, Start Num: 42

Candidate Starts for PhrodoBaggins_66:

(Start: 42 @55946 has 267 MA's), (50, 55886), (55, 55865), (66, 55793), (70, 55778), (89, 55718), (93, 55703), (100, 55664),

Gene: Phunky_63 Start: 55578, Stop: 55219, Start Num: 42

Candidate Starts for Phunky_63:

(Start: 42 @55578 has 267 MA's), (50, 55518), (55, 55497), (66, 55425), (70, 55410), (89, 55350), (93, 55335), (100, 55296),

Gene: Piglet_0065 Start: 56117, Stop: 55692, Start Num: 24

Candidate Starts for Piglet_0065:

(Start: 24 @56117 has 34 MA's), (Start: 42 @56051 has 267 MA's), (54, 55973), (55, 55970), (66, 55898), (70, 55883), (89, 55823), (93, 55808), (100, 55769),

Gene: PinheadLarry_64 Start: 55888, Stop: 55529, Start Num: 42

Candidate Starts for PinheadLarry_64:

(Start: 42 @55888 has 267 MA's), (54, 55810), (55, 55807), (66, 55735), (70, 55720), (89, 55660), (93, 55645), (100, 55606),

Gene: Pinkman_65 Start: 55664, Stop: 55305, Start Num: 42

Candidate Starts for Pinkman_65:

(Start: 42 @55664 has 267 MA's), (50, 55604), (55, 55583), (66, 55511), (70, 55496), (89, 55436), (93, 55421), (100, 55382),

Gene: Pipsqueak_63 Start: 55567, Stop: 55148, Start Num: 27

Candidate Starts for Pipsqueak_63:

(Start: 27 @55567 has 8 MA's), (55, 55426), (66, 55354), (70, 55339), (89, 55279), (93, 55264), (100, 55225),

Gene: Placalicious_66 Start: 56608, Stop: 56249, Start Num: 42

Candidate Starts for Placalicious_66:

(Start: 42 @56608 has 267 MA's), (55, 56527), (66, 56455), (70, 56440), (89, 56380), (93, 56365), (100, 56326),

Gene: Plata_66 Start: 55816, Stop: 55457, Start Num: 42

Candidate Starts for Plata_66:

(Start: 42 @55816 has 267 MA's), (50, 55756), (55, 55735), (66, 55663), (70, 55648), (89, 55588), (93, 55573), (100, 55534),

Gene: Plmatters_64 Start: 55581, Stop: 55222, Start Num: 42

Candidate Starts for Plmatters_64:

(Start: 24 @55647 has 34 MA's), (Start: 42 @55581 has 267 MA's), (54, 55503), (55, 55500), (66, 55428), (70, 55413), (89, 55353), (93, 55338), (100, 55299),

Gene: Podrick_64 Start: 55360, Stop: 55001, Start Num: 42

Candidate Starts for Podrick_64:

(1, 55519), (Start: 5 @55504 has 1 MA's), (13, 55459), (Start: 42 @55360 has 267 MA's), (55, 55279), (66, 55207), (70, 55192), (89, 55132), (93, 55117), (100, 55078),

Gene: Pops_63 Start: 55578, Stop: 55219, Start Num: 42

Candidate Starts for Pops_63:

(Start: 42 @55578 has 267 MA's), (50, 55518), (55, 55497), (66, 55425), (70, 55410), (89, 55350), (93, 55335), (100, 55296),

Gene: Poster_58 Start: 55735, Stop: 55448, Start Num: 42

Candidate Starts for Poster_58:

(Start: 42 @55735 has 267 MA's), (45, 55717), (48, 55708), (60, 55621), (65, 55594), (85, 55561), (93, 55546), (96, 55525), (98, 55513), (103, 55495), (107, 55459),

Gene: Potter_63 Start: 55572, Stop: 55213, Start Num: 42

Candidate Starts for Potter_63:

(Start: 42 @55572 has 267 MA's), (50, 55512), (55, 55491), (66, 55419), (70, 55404), (89, 55344), (93, 55329), (100, 55290),

Gene: Prickles_67 Start: 56073, Stop: 55714, Start Num: 42

Candidate Starts for Prickles_67:

(Start: 42 @56073 has 267 MA's), (50, 56013), (55, 55992), (66, 55920), (70, 55905), (89, 55845), (93, 55830), (100, 55791),

Gene: Prince_59 Start: 56953, Stop: 56666, Start Num: 42

Candidate Starts for Prince_59:

(Start: 42 @56953 has 267 MA's), (45, 56935), (48, 56926), (60, 56839), (65, 56812), (93, 56764), (96, 56743), (98, 56731), (103, 56713), (107, 56677),

Gene: ProfessorX_64 Start: 55571, Stop: 55212, Start Num: 42

Candidate Starts for ProfessorX_64:

(Start: 42 @55571 has 267 MA's), (50, 55511), (55, 55490), (66, 55418), (70, 55403), (89, 55343), (93, 55328), (100, 55289),

Gene: Puhltonio_64 Start: 55846, Stop: 55487, Start Num: 42

Candidate Starts for Puhltonio_64:

(Start: 42 @55846 has 267 MA's), (50, 55786), (55, 55765), (66, 55693), (70, 55678), (89, 55618), (93, 55603), (100, 55564),

Gene: QueenBeane_65 Start: 55878, Stop: 55519, Start Num: 42

Candidate Starts for QueenBeane_65:

(Start: 24 @55944 has 34 MA's), (Start: 42 @55878 has 267 MA's), (55, 55797), (66, 55725), (70, 55710), (89, 55650), (93, 55635), (100, 55596),

Gene: QueenPie_57 Start: 56450, Stop: 56181, Start Num: 45

Candidate Starts for QueenPie_57:

(Start: 42 @56468 has 267 MA's), (45, 56450), (48, 56441), (65, 56327), (93, 56279), (96, 56258), (98, 56246), (103, 56228), (107, 56192),

Gene: Quesadilla_64 Start: 57240, Stop: 56815, Start Num: 19

Candidate Starts for Quesadilla_64:

(Start: 19 @57240 has 1 MA's), (Start: 42 @57156 has 267 MA's), (53, 57099), (57, 57063), (93, 56934), (98, 56901), (101, 56892), (106, 56865), (110, 56823),

Gene: Quisquilliae_66 Start: 55839, Stop: 55480, Start Num: 42

Candidate Starts for Quisquilliae_66:

(Start: 24 @55905 has 34 MA's), (Start: 42 @55839 has 267 MA's), (54, 55761), (55, 55758), (66, 55686), (70, 55671), (89, 55611), (93, 55596), (100, 55557),

Gene: RawrgerThat_60 Start: 56793, Stop: 56506, Start Num: 42

Candidate Starts for RawrgerThat_60:

(Start: 42 @56793 has 267 MA's), (45, 56775), (48, 56766), (60, 56679), (65, 56652), (93, 56604), (96, 56583), (98, 56571), (103, 56553), (107, 56517),

Gene: Reccee_65 Start: 57267, Stop: 56884, Start Num: 29

Candidate Starts for Reccee_65:

(Start: 29 @57267 has 9 MA's), (92, 57003), (94, 56994), (99, 56964),

Gene: RedMaple_66 Start: 56386, Stop: 55955, Start Num: 22

Candidate Starts for RedMaple_66:

(7, 56449), (8, 56437), (15, 56410), (Start: 22 @56386 has 8 MA's), (26, 56371), (28, 56365), (Start: 42 @56314 has 267 MA's), (50, 56254), (55, 56233), (66, 56161), (70, 56146), (89, 56086), (93, 56071), (100, 56032),

Gene: RedRaider89_65 Start: 56077, Stop: 55646, Start Num: 22

Candidate Starts for RedRaider89_65:

(Start: 22 @56077 has 8 MA's), (26, 56062), (28, 56056), (Start: 42 @56005 has 267 MA's), (50, 55945), (55, 55924), (66, 55852), (70, 55837), (89, 55777), (93, 55762), (100, 55723),

Gene: Renkei_58 Start: 55748, Stop: 55461, Start Num: 42

Candidate Starts for Renkei_58:

(Start: 42 @55748 has 267 MA's), (45, 55730), (48, 55721), (60, 55634), (65, 55607), (85, 55574), (93, 55559), (96, 55538), (98, 55526), (103, 55508), (107, 55472),

Gene: Reprobate_63 Start: 57023, Stop: 56655, Start Num: 39

Candidate Starts for Reprobate_63:

(2, 57173), (21, 57095), (Start: 29 @57065 has 9 MA's), (Start: 39 @57023 has 3 MA's), (Start: 43 @57005 has 1 MA's), (44, 56999), (69, 56852), (90, 56783), (92, 56774), (94, 56765), (99, 56735),

Gene: Rich_63 Start: 58173, Stop: 57790, Start Num: 29

Candidate Starts for Rich_63:

(Start: 29 @58173 has 9 MA's), (83, 57945), (92, 57909), (94, 57900), (99, 57870),

Gene: Ricotta_65 Start: 55571, Stop: 55212, Start Num: 42

Candidate Starts for Ricotta_65:

(Start: 24 @55637 has 34 MA's), (Start: 42 @55571 has 267 MA's), (54, 55493), (55, 55490), (66, 55418), (70, 55403), (89, 55343), (93, 55328), (100, 55289),

Gene: Riggan_66 Start: 55871, Stop: 55512, Start Num: 42

Candidate Starts for Riggan_66:

(Start: 24 @55937 has 34 MA's), (Start: 42 @55871 has 267 MA's), (50, 55811), (55, 55790), (66, 55718), (70, 55703), (89, 55643), (93, 55628), (100, 55589),

Gene: Rimu_65 Start: 56039, Stop: 55680, Start Num: 42

Candidate Starts for Rimu_65:

(Start: 24 @56105 has 34 MA's), (Start: 42 @56039 has 267 MA's), (54, 55961), (55, 55958), (66, 55886), (70, 55871), (89, 55811), (93, 55796), (100, 55757),

Gene: Rinke_61 Start: 56751, Stop: 56356, Start Num: 29

Candidate Starts for Rinke_61:

(12, 56814), (Start: 29 @56751 has 9 MA's), (Start: 42 @56700 has 267 MA's), (49, 56655), (55, 56628), (58, 56601), (66, 56556), (73, 56532), (75, 56529), (86, 56502), (94, 56475), (96, 56460), (100, 56442), (104, 56418),

Gene: Rita130_64 Start: 57080, Stop: 56697, Start Num: 29

Candidate Starts for Rita130_64:

(Start: 29 @57080 has 9 MA's), (92, 56816), (94, 56807), (99, 56777),

Gene: Riverton_65 Start: 55799, Stop: 55440, Start Num: 42

Candidate Starts for Riverton_65:

(Start: 42 @55799 has 267 MA's), (50, 55739), (55, 55718), (66, 55646), (70, 55631), (89, 55571), (93, 55556), (100, 55517),

Gene: Robyn_65 Start: 55718, Stop: 55359, Start Num: 42

Candidate Starts for Robyn_65:

(Start: 27 @55778 has 8 MA's), (Start: 42 @55718 has 267 MA's), (50, 55658), (55, 55637), (66, 55565), (70, 55550), (89, 55490), (93, 55475), (100, 55436),

Gene: Roliet_63 Start: 54913, Stop: 54554, Start Num: 42

Candidate Starts for Roliet_63:

(Start: 42 @54913 has 267 MA's), (50, 54853), (55, 54832), (66, 54760), (70, 54745), (89, 54685), (93, 54670), (100, 54631),

Gene: Roscoe_66 Start: 56017, Stop: 55658, Start Num: 42

Candidate Starts for Roscoe_66:

(Start: 22 @56089 has 8 MA's), (26, 56074), (28, 56068), (Start: 42 @56017 has 267 MA's), (50, 55957), (55, 55936), (66, 55864), (70, 55849), (89, 55789), (93, 55774), (100, 55735),

Gene: Roy17_63 Start: 55337, Stop: 54912, Start Num: 24

Candidate Starts for Roy17_63:

(Start: 24 @55337 has 34 MA's), (Start: 42 @55271 has 267 MA's), (54, 55193), (55, 55190), (66, 55118), (70, 55103), (89, 55043), (93, 55028), (100, 54989),

Gene: SDcharge11_65 Start: 55085, Stop: 54726, Start Num: 42

Candidate Starts for SDcharge11_65:

(Start: 42 @55085 has 267 MA's), (50, 55025), (55, 55004), (66, 54932), (70, 54917), (89, 54857), (93, 54842), (100, 54803),

Gene: Saguaro_62 Start: 56449, Stop: 56135, Start Num: 42
Candidate Starts for Saguaro_62:
(Start: 42 @56449 has 267 MA's), (53, 56395), (58, 56356), (93, 56236), (96, 56215), (98, 56203),
(100, 56197), (106, 56167),

Gene: SallyH_68 Start: 55825, Stop: 55466, Start Num: 42
Candidate Starts for SallyH_68:
(Start: 42 @55825 has 267 MA's), (50, 55765), (55, 55744), (66, 55672), (70, 55657), (89, 55597), (93,
55582), (100, 55543),

Gene: Samaymay_65 Start: 55878, Stop: 55519, Start Num: 42
Candidate Starts for Samaymay_65:
(Start: 24 @55944 has 34 MA's), (Start: 42 @55878 has 267 MA's), (55, 55797), (66, 55725), (70,
55710), (89, 55650), (93, 55635), (100, 55596),

Gene: SassyCat97_64 Start: 55563, Stop: 55204, Start Num: 42
Candidate Starts for SassyCat97_64:
(Start: 42 @55563 has 267 MA's), (50, 55503), (55, 55482), (66, 55410), (70, 55395), (89, 55335), (93,
55320), (100, 55281),

Gene: Schadenfreude_65 Start: 55444, Stop: 55085, Start Num: 42
Candidate Starts for Schadenfreude_65:
(Start: 42 @55444 has 267 MA's), (50, 55384), (55, 55363), (66, 55291), (70, 55276), (89, 55216), (93,
55201), (100, 55162),

Gene: Schueller_65 Start: 55801, Stop: 55442, Start Num: 42
Candidate Starts for Schueller_65:
(Start: 42 @55801 has 267 MA's), (50, 55741), (55, 55720), (66, 55648), (70, 55633), (89, 55573), (93,
55558), (100, 55519),

Gene: Scoot17C_65 Start: 55571, Stop: 55146, Start Num: 24
Candidate Starts for Scoot17C_65:
(Start: 24 @55571 has 34 MA's), (Start: 42 @55505 has 267 MA's), (54, 55427), (55, 55424), (66,
55352), (70, 55337), (89, 55277), (93, 55262), (100, 55223),

Gene: Scrick_65 Start: 55577, Stop: 55218, Start Num: 42
Candidate Starts for Scrick_65:
(Start: 24 @55643 has 34 MA's), (Start: 42 @55577 has 267 MA's), (54, 55499), (55, 55496), (66,
55424), (70, 55409), (89, 55349), (93, 55334), (100, 55295),

Gene: Selr12_66 Start: 55587, Stop: 55228, Start Num: 42
Candidate Starts for Selr12_66:
(Start: 24 @55653 has 34 MA's), (Start: 42 @55587 has 267 MA's), (54, 55509), (55, 55506), (66,
55434), (70, 55419), (89, 55359), (93, 55344), (100, 55305),

Gene: Serendipitous_63 Start: 56571, Stop: 56188, Start Num: 29
Candidate Starts for Serendipitous_63:
(Start: 29 @56571 has 9 MA's), (94, 56298), (99, 56268),

Gene: Serendipity_64 Start: 55926, Stop: 55501, Start Num: 24
Candidate Starts for Serendipity_64:

(Start: 24 @55926 has 34 MA's), (Start: 42 @55860 has 267 MA's), (54, 55782), (55, 55779), (66, 55707), (70, 55692), (89, 55632), (93, 55617), (100, 55578),

Gene: Serpentine_0065 Start: 56009, Stop: 55584, Start Num: 24

Candidate Starts for Serpentine_0065:

(Start: 24 @56009 has 34 MA's), (Start: 42 @55943 has 267 MA's), (54, 55865), (55, 55862), (66, 55790), (70, 55775), (89, 55715), (93, 55700), (100, 55661),

Gene: ShadowBud_65 Start: 55902, Stop: 55477, Start Num: 24

Candidate Starts for ShadowBud_65:

(Start: 24 @55902 has 34 MA's), (Start: 42 @55836 has 267 MA's), (54, 55758), (55, 55755), (66, 55683), (70, 55668), (89, 55608), (93, 55593), (100, 55554),

Gene: Sheila_62 Start: 54945, Stop: 54586, Start Num: 42

Candidate Starts for Sheila_62:

(Start: 42 @54945 has 267 MA's), (50, 54885), (55, 54864), (66, 54792), (70, 54777), (89, 54717), (93, 54702), (100, 54663),

Gene: Shenyu_64 Start: 57300, Stop: 56917, Start Num: 29

Candidate Starts for Shenyu_64:

(Start: 29 @57300 has 9 MA's), (76, 57090), (90, 57045), (92, 57036), (94, 57027), (99, 56997),

Gene: ShiVal_63 Start: 55582, Stop: 55223, Start Num: 42

Candidate Starts for ShiVal_63:

(Start: 42 @55582 has 267 MA's), (50, 55522), (55, 55501), (66, 55429), (70, 55414), (89, 55354), (93, 55339), (100, 55300),

Gene: Sigman_65 Start: 55538, Stop: 55179, Start Num: 42

Candidate Starts for Sigman_65:

(Start: 42 @55538 has 267 MA's), (50, 55478), (55, 55457), (66, 55385), (70, 55370), (89, 55310), (93, 55295), (100, 55256),

Gene: SilverBell_66 Start: 55889, Stop: 55464, Start Num: 24

Candidate Starts for SilverBell_66:

(Start: 24 @55889 has 34 MA's), (Start: 42 @55823 has 267 MA's), (50, 55763), (55, 55742), (66, 55670), (70, 55655), (89, 55595), (93, 55580), (100, 55541),

Gene: Simielle_65 Start: 55542, Stop: 55183, Start Num: 42

Candidate Starts for Simielle_65:

(Start: 24 @55608 has 34 MA's), (Start: 42 @55542 has 267 MA's), (54, 55464), (55, 55461), (66, 55389), (70, 55374), (89, 55314), (93, 55299), (100, 55260),

Gene: SirBeauregard_66 Start: 56180, Stop: 55749, Start Num: 22

Candidate Starts for SirBeauregard_66:

(Start: 22 @56180 has 8 MA's), (26, 56165), (28, 56159), (Start: 42 @56108 has 267 MA's), (50, 56048), (55, 56027), (66, 55955), (70, 55940), (89, 55880), (93, 55865), (100, 55826),

Gene: SirJeffery_64 Start: 57215, Stop: 56832, Start Num: 29

Candidate Starts for SirJeffery_64:

(Start: 29 @57215 has 9 MA's), (92, 56951), (94, 56942), (99, 56912),

Gene: Skippy_66 Start: 55796, Stop: 55437, Start Num: 42

Candidate Starts for Skippy_66:

(Start: 24 @55862 has 34 MA's), (Start: 42 @55796 has 267 MA's), (54, 55718), (55, 55715), (66, 55643), (70, 55628), (89, 55568), (93, 55553), (100, 55514),

Gene: Slatt_66 Start: 55861, Stop: 55502, Start Num: 42

Candidate Starts for Slatt_66:

(Start: 24 @55927 has 34 MA's), (Start: 42 @55861 has 267 MA's), (50, 55801), (55, 55780), (66, 55708), (70, 55693), (89, 55633), (93, 55618), (100, 55579),

Gene: Soile_66 Start: 56092, Stop: 55733, Start Num: 42

Candidate Starts for Soile_66:

(Start: 24 @56158 has 34 MA's), (Start: 42 @56092 has 267 MA's), (54, 56014), (55, 56011), (66, 55939), (70, 55924), (89, 55864), (93, 55849), (100, 55810),

Gene: Solosis_64 Start: 55558, Stop: 55199, Start Num: 42

Candidate Starts for Solosis_64:

(Start: 42 @55558 has 267 MA's), (50, 55498), (54, 55480), (55, 55477), (66, 55405), (70, 55390), (89, 55330), (93, 55315), (100, 55276),

Gene: Sophia_64 Start: 55551, Stop: 55192, Start Num: 42

Candidate Starts for Sophia_64:

(Start: 42 @55551 has 267 MA's), (50, 55491), (54, 55473), (55, 55470), (66, 55398), (70, 55383), (89, 55323), (93, 55308), (100, 55269),

Gene: Soto_63 Start: 55118, Stop: 54759, Start Num: 42

Candidate Starts for Soto_63:

(Start: 42 @55118 has 267 MA's), (50, 55058), (55, 55037), (66, 54965), (70, 54950), (89, 54890), (93, 54875), (100, 54836),

Gene: Spartan300_65 Start: 55779, Stop: 55420, Start Num: 42

Candidate Starts for Spartan300_65:

(Start: 42 @55779 has 267 MA's), (50, 55719), (55, 55698), (66, 55626), (70, 55611), (89, 55551), (93, 55536), (100, 55497),

Gene: Squid_64 Start: 55563, Stop: 55204, Start Num: 42

Candidate Starts for Squid_64:

(1, 55722), (Start: 5 @55707 has 1 MA's), (13, 55662), (Start: 42 @55563 has 267 MA's), (50, 55503), (55, 55482), (66, 55410), (70, 55395), (89, 55335), (93, 55320), (100, 55281),

Gene: Squiggle_65 Start: 55571, Stop: 55212, Start Num: 42

Candidate Starts for Squiggle_65:

(Start: 24 @55637 has 34 MA's), (Start: 42 @55571 has 267 MA's), (50, 55511), (55, 55490), (66, 55418), (70, 55403), (89, 55343), (93, 55328), (100, 55289),

Gene: Stinger_60 Start: 55720, Stop: 55376, Start Num: 36

Candidate Starts for Stinger_60:

(Start: 36 @55720 has 1 MA's), (Start: 42 @55699 has 267 MA's), (58, 55594), (65, 55555), (70, 55534), (80, 55504), (91, 55480), (96, 55453), (103, 55423),

Gene: StinkyVeggy_64 Start: 57043, Stop: 56660, Start Num: 29

Candidate Starts for StinkyVeggy_64:

(Start: 29 @57043 has 9 MA's), (76, 56833), (90, 56788), (92, 56779), (94, 56770), (99, 56740),

Gene: Struggle_66 Start: 55655, Stop: 55296, Start Num: 42

Candidate Starts for Struggle_66:

(Start: 42 @55655 has 267 MA's), (50, 55595), (55, 55574), (66, 55502), (70, 55487), (89, 55427), (93, 55412), (100, 55373),

Gene: Suffolk_63 Start: 55066, Stop: 54707, Start Num: 42

Candidate Starts for Suffolk_63:

(1, 55225), (Start: 5 @55210 has 1 MA's), (13, 55165), (Start: 42 @55066 has 267 MA's), (54, 54988), (55, 54985), (66, 54913), (70, 54898), (89, 54838), (93, 54823), (100, 54784),

Gene: Suigeneris_66 Start: 57357, Stop: 56950, Start Num: 29

Candidate Starts for Suigeneris_66:

(Start: 29 @57357 has 9 MA's), (92, 57069), (94, 57060), (99, 57030),

Gene: Surely_65 Start: 55853, Stop: 55494, Start Num: 42

Candidate Starts for Surely_65:

(1, 56012), (Start: 5 @55997 has 1 MA's), (13, 55952), (Start: 42 @55853 has 267 MA's), (50, 55793), (55, 55772), (66, 55700), (70, 55685), (89, 55625), (93, 55610), (100, 55571),

Gene: Swiphy_67 Start: 56097, Stop: 55738, Start Num: 42

Candidate Starts for Swiphy_67:

(Start: 22 @56169 has 8 MA's), (26, 56154), (28, 56148), (Start: 42 @56097 has 267 MA's), (50, 56037), (55, 56016), (66, 55944), (70, 55929), (89, 55869), (93, 55854), (100, 55815),

Gene: Swish_66 Start: 55827, Stop: 55468, Start Num: 42

Candidate Starts for Swish_66:

(Start: 42 @55827 has 267 MA's), (50, 55767), (55, 55746), (66, 55674), (70, 55659), (89, 55599), (93, 55584), (100, 55545),

Gene: TallGrassMM_64 Start: 55467, Stop: 55108, Start Num: 42

Candidate Starts for TallGrassMM_64:

(Start: 42 @55467 has 267 MA's), (50, 55407), (55, 55386), (66, 55314), (70, 55299), (89, 55239), (93, 55224), (100, 55185),

Gene: Taraxa_67 Start: 55454, Stop: 55095, Start Num: 42

Candidate Starts for Taraxa_67:

(Start: 42 @55454 has 267 MA's), (50, 55394), (55, 55373), (66, 55301), (70, 55286), (89, 55226), (93, 55211), (100, 55172),

Gene: Telesworld_63 Start: 55738, Stop: 55313, Start Num: 24

Candidate Starts for Telesworld_63:

(Start: 24 @55738 has 34 MA's), (Start: 42 @55672 has 267 MA's), (50, 55612), (54, 55594), (55, 55591), (66, 55519), (70, 55504), (89, 55444), (93, 55429), (100, 55390),

Gene: Thonko_65 Start: 54991, Stop: 54698, Start Num: 52

Candidate Starts for Thonko_65:

(13, 55171), (33, 55099), (Start: 38 @55075 has 1 MA's), (Start: 52 @54991 has 10 MA's), (61, 54937), (66, 54916), (82, 54880), (83, 54874), (103, 54781), (105, 54766), (110, 54706),

Gene: Thora_64 Start: 55975, Stop: 55490, Start Num: 9

Candidate Starts for Thora_64:

(Start: 9 @55975 has 4 MA's), (Start: 27 @55909 has 8 MA's), (54, 55771), (55, 55768), (66, 55696), (70, 55681), (89, 55621), (93, 55606), (100, 55567),

Gene: ThreeOh3D2_66 Start: 56136, Stop: 55711, Start Num: 24
Candidate Starts for ThreeOh3D2_66:
(Start: 24 @56136 has 34 MA's), (Start: 42 @56070 has 267 MA's), (54, 55992), (55, 55989), (66, 55917), (70, 55902), (89, 55842), (93, 55827), (100, 55788),

Gene: Thunderbird_65 Start: 55810, Stop: 55451, Start Num: 42
Candidate Starts for Thunderbird_65:
(Start: 24 @55876 has 34 MA's), (Start: 42 @55810 has 267 MA's), (50, 55750), (55, 55729), (66, 55657), (70, 55642), (89, 55582), (93, 55567), (100, 55528),

Gene: Timmi_64 Start: 55552, Stop: 55193, Start Num: 42
Candidate Starts for Timmi_64:
(Start: 24 @55618 has 34 MA's), (Start: 42 @55552 has 267 MA's), (54, 55474), (55, 55471), (66, 55399), (70, 55384), (89, 55324), (93, 55309), (100, 55270),

Gene: TomBombadil_65 Start: 55837, Stop: 55478, Start Num: 42
Candidate Starts for TomBombadil_65:
(1, 55996), (Start: 5 @55981 has 1 MA's), (13, 55936), (Start: 42 @55837 has 267 MA's), (50, 55777), (55, 55756), (66, 55684), (70, 55669), (89, 55609), (93, 55594), (100, 55555),

Gene: Tomlarah_66 Start: 56406, Stop: 56047, Start Num: 42
Candidate Starts for Tomlarah_66:
(Start: 24 @56472 has 34 MA's), (Start: 42 @56406 has 267 MA's), (54, 56328), (55, 56325), (66, 56253), (70, 56238), (89, 56178), (93, 56163), (100, 56124),

Gene: Toni_65 Start: 55999, Stop: 55640, Start Num: 42
Candidate Starts for Toni_65:
(Start: 24 @56065 has 34 MA's), (Start: 42 @55999 has 267 MA's), (54, 55921), (55, 55918), (66, 55846), (70, 55831), (89, 55771), (93, 55756), (100, 55717),

Gene: TooFast2Furius_65 Start: 55818, Stop: 55459, Start Num: 42
Candidate Starts for TooFast2Furius_65:
(Start: 42 @55818 has 267 MA's), (54, 55740), (55, 55737), (66, 55665), (70, 55650), (89, 55590), (93, 55575), (100, 55536),

Gene: Tooj_63 Start: 55222, Stop: 54863, Start Num: 42
Candidate Starts for Tooj_63:
(Start: 42 @55222 has 267 MA's), (50, 55162), (55, 55141), (66, 55069), (70, 55054), (89, 54994), (93, 54979), (100, 54940),

Gene: Tres_61 Start: 54306, Stop: 54046, Start Num: 52
Candidate Starts for Tres_61:
(47, 54348), (Start: 52 @54306 has 10 MA's), (63, 54240), (80, 54198), (98, 54114), (108, 54051),

Gene: Triad_67 Start: 55067, Stop: 54648, Start Num: 27
Candidate Starts for Triad_67:
(Start: 27 @55067 has 8 MA's), (Start: 42 @55007 has 267 MA's), (50, 54947), (55, 54926), (66, 54854), (70, 54839), (89, 54779), (93, 54764), (100, 54725),

Gene: True_64 Start: 55562, Stop: 55203, Start Num: 42
Candidate Starts for True_64:
(Start: 24 @55628 has 34 MA's), (Start: 42 @55562 has 267 MA's), (55, 55481), (66, 55409), (70, 55394), (89, 55334), (93, 55319), (100, 55280),

Gene: Trypo_67 Start: 56360, Stop: 55875, Start Num: 9
Candidate Starts for Trypo_67:
(Start: 9 @56360 has 4 MA's), (Start: 27 @56294 has 8 MA's), (54, 56156), (55, 56153), (66, 56081),
(70, 56066), (89, 56006), (93, 55991), (100, 55952),

Gene: TyrionL_66 Start: 55660, Stop: 55301, Start Num: 42
Candidate Starts for TyrionL_66:
(Start: 42 @55660 has 267 MA's), (55, 55579), (66, 55507), (70, 55492), (89, 55432), (93, 55417),
(100, 55378),

Gene: UAch1_65 Start: 55860, Stop: 55435, Start Num: 24
Candidate Starts for UAch1_65:
(Start: 24 @55860 has 34 MA's), (Start: 42 @55794 has 267 MA's), (55, 55713), (66, 55641), (70,
55626), (89, 55566), (93, 55551), (100, 55512),

Gene: UncleHowie_63 Start: 55330, Stop: 54905, Start Num: 24
Candidate Starts for UncleHowie_63:
(Start: 24 @55330 has 34 MA's), (Start: 42 @55264 has 267 MA's), (50, 55204), (55, 55183), (66,
55111), (70, 55096), (89, 55036), (93, 55021), (100, 54982),

Gene: Usavi_65 Start: 55932, Stop: 55573, Start Num: 42
Candidate Starts for Usavi_65:
(1, 56091), (Start: 5 @56076 has 1 MA's), (13, 56031), (Start: 42 @55932 has 267 MA's), (50, 55872),
(55, 55851), (66, 55779), (70, 55764), (89, 55704), (93, 55689), (100, 55650),

Gene: Vaishali24_64 Start: 55527, Stop: 55108, Start Num: 27
Candidate Starts for Vaishali24_64:
(Start: 27 @55527 has 8 MA's), (Start: 42 @55467 has 267 MA's), (50, 55407), (55, 55386), (66,
55314), (70, 55299), (89, 55239), (93, 55224), (100, 55185),

Gene: Valjean_65 Start: 55789, Stop: 55430, Start Num: 42
Candidate Starts for Valjean_65:
(Start: 42 @55789 has 267 MA's), (50, 55729), (55, 55708), (66, 55636), (70, 55621), (89, 55561), (93,
55546), (100, 55507),

Gene: Vaticameos_62 Start: 54097, Stop: 53738, Start Num: 42
Candidate Starts for Vaticameos_62:
(Start: 24 @54163 has 34 MA's), (Start: 42 @54097 has 267 MA's), (50, 54037), (55, 54016), (66,
53944), (70, 53929), (89, 53869), (93, 53854), (100, 53815),

Gene: Veritas_65 Start: 55739, Stop: 55380, Start Num: 42
Candidate Starts for Veritas_65:
(3, 55892), (4, 55886), (6, 55880), (18, 55826), (Start: 19 @55820 has 1 MA's), (Start: 42 @55739 has
267 MA's), (50, 55679), (55, 55658), (66, 55586), (70, 55571), (89, 55511), (93, 55496), (100, 55457),

Gene: Vincenzo_62 Start: 58016, Stop: 57621, Start Num: 27
Candidate Starts for Vincenzo_62:
(Start: 27 @58016 has 8 MA's), (46, 57932), (56, 57863), (58, 57851), (60, 57839), (65, 57812), (66,
57806), (70, 57791), (74, 57776), (96, 57710), (103, 57680), (109, 57635),

Gene: VioletZ_61 Start: 56866, Stop: 56579, Start Num: 42
Candidate Starts for VioletZ_61:

(Start: 42 @56866 has 267 MA's), (45, 56848), (48, 56839), (60, 56752), (65, 56725), (93, 56677), (96, 56656), (98, 56644), (103, 56626), (107, 56590),

Gene: Virapocalypse_66 Start: 55888, Stop: 55529, Start Num: 42

Candidate Starts for Virapocalypse_66:

(Start: 42 @55888 has 267 MA's), (50, 55828), (55, 55807), (66, 55735), (70, 55720), (89, 55660), (93, 55645), (100, 55606),

Gene: Virgeve_64 Start: 55598, Stop: 55167, Start Num: 22

Candidate Starts for Virgeve_64:

(Start: 22 @55598 has 8 MA's), (26, 55583), (28, 55577), (Start: 42 @55526 has 267 MA's), (50, 55466), (55, 55445), (66, 55373), (70, 55358), (89, 55298), (93, 55283), (100, 55244),

Gene: Vista_64 Start: 55631, Stop: 55206, Start Num: 24

Candidate Starts for Vista_64:

(Start: 24 @55631 has 34 MA's), (Start: 42 @55565 has 267 MA's), (54, 55487), (55, 55484), (66, 55412), (70, 55397), (89, 55337), (93, 55322), (100, 55283),

Gene: Vivaldi_66 Start: 56024, Stop: 55689, Start Num: 42

Candidate Starts for Vivaldi_66:

(Start: 42 @56024 has 267 MA's), (50, 55964), (55, 55943), (66, 55871), (70, 55856), (89, 55796), (93, 55781), (100, 55742),

Gene: Vortex_64 Start: 55547, Stop: 55188, Start Num: 42

Candidate Starts for Vortex_64:

(1, 55706), (Start: 5 @55691 has 1 MA's), (13, 55646), (Start: 42 @55547 has 267 MA's), (50, 55487), (55, 55466), (66, 55394), (70, 55379), (89, 55319), (93, 55304), (100, 55265),

Gene: Waleliano_59 Start: 56807, Stop: 56520, Start Num: 42

Candidate Starts for Waleliano_59:

(Start: 42 @56807 has 267 MA's), (45, 56789), (48, 56780), (60, 56693), (65, 56666), (93, 56618), (96, 56597), (98, 56585), (103, 56567), (107, 56531),

Gene: Wallhey_66 Start: 55670, Stop: 55311, Start Num: 42

Candidate Starts for Wallhey_66:

(Start: 42 @55670 has 267 MA's), (50, 55610), (55, 55589), (66, 55517), (70, 55502), (89, 55442), (93, 55427), (100, 55388),

Gene: Waterdiva_65 Start: 55926, Stop: 55567, Start Num: 42

Candidate Starts for Waterdiva_65:

(Start: 24 @55992 has 34 MA's), (Start: 42 @55926 has 267 MA's), (54, 55848), (55, 55845), (66, 55773), (70, 55758), (89, 55698), (93, 55683), (100, 55644),

Gene: Weher20_63 Start: 56181, Stop: 55822, Start Num: 42

Candidate Starts for Weher20_63:

(Start: 42 @56181 has 267 MA's), (50, 56121), (55, 56100), (66, 56028), (70, 56013), (89, 55953), (93, 55938), (100, 55899),

Gene: Windsor_65 Start: 56112, Stop: 55753, Start Num: 42

Candidate Starts for Windsor_65:

(Start: 22 @56184 has 8 MA's), (26, 56169), (28, 56163), (Start: 42 @56112 has 267 MA's), (50, 56052), (55, 56031), (66, 55959), (70, 55944), (89, 55884), (93, 55869), (100, 55830),

Gene: Xavier_64 Start: 55620, Stop: 55195, Start Num: 24

Candidate Starts for Xavier_64:

(Start: 24 @55620 has 34 MA's), (Start: 42 @55554 has 267 MA's), (50, 55494), (55, 55473), (66, 55401), (70, 55386), (89, 55326), (93, 55311), (100, 55272),

Gene: Xincheng_60 Start: 57972, Stop: 57685, Start Num: 42

Candidate Starts for Xincheng_60:

(Start: 42 @57972 has 267 MA's), (45, 57954), (48, 57945), (65, 57831), (93, 57783), (96, 57762), (98, 57750), (103, 57732), (107, 57696),

Gene: Yoshand_66 Start: 55840, Stop: 55481, Start Num: 42

Candidate Starts for Yoshand_66:

(Start: 42 @55840 has 267 MA's), (50, 55780), (55, 55759), (66, 55687), (70, 55672), (89, 55612), (93, 55597), (100, 55558),

Gene: YouGoGlencoco_66 Start: 55852, Stop: 55433, Start Num: 27

Candidate Starts for YouGoGlencoco_66:

(Start: 27 @55852 has 8 MA's), (50, 55732), (55, 55711), (66, 55639), (70, 55624), (89, 55564), (93, 55549), (100, 55510),

Gene: Zaider_66 Start: 56033, Stop: 55674, Start Num: 42

Candidate Starts for Zaider_66:

(Start: 24 @56099 has 34 MA's), (Start: 42 @56033 has 267 MA's), (54, 55955), (55, 55952), (66, 55880), (70, 55865), (89, 55805), (93, 55790), (100, 55751),

Gene: Zelda_66 Start: 56194, Stop: 55835, Start Num: 42

Candidate Starts for Zelda_66:

(Start: 24 @56260 has 34 MA's), (Start: 42 @56194 has 267 MA's), (50, 56134), (55, 56113), (66, 56041), (70, 56026), (89, 55966), (93, 55951), (100, 55912),

Gene: Zemanar_60 Start: 56639, Stop: 56352, Start Num: 42

Candidate Starts for Zemanar_60:

(Start: 42 @56639 has 267 MA's), (45, 56621), (48, 56612), (60, 56525), (65, 56498), (93, 56450), (96, 56429), (98, 56417), (103, 56399), (107, 56363),

Gene: Zenteno07_71 Start: 57544, Stop: 57197, Start Num: 37

Candidate Starts for Zenteno07_71:

(14, 57634), (25, 57598), (Start: 37 @57544 has 3 MA's), (54, 57448), (66, 57373), (70, 57358), (93, 57298), (94, 57292),

Gene: Zonia_66 Start: 56121, Stop: 55762, Start Num: 42

Candidate Starts for Zonia_66:

(Start: 42 @56121 has 267 MA's), (50, 56061), (55, 56040), (66, 55968), (70, 55953), (89, 55893), (93, 55878), (100, 55839),