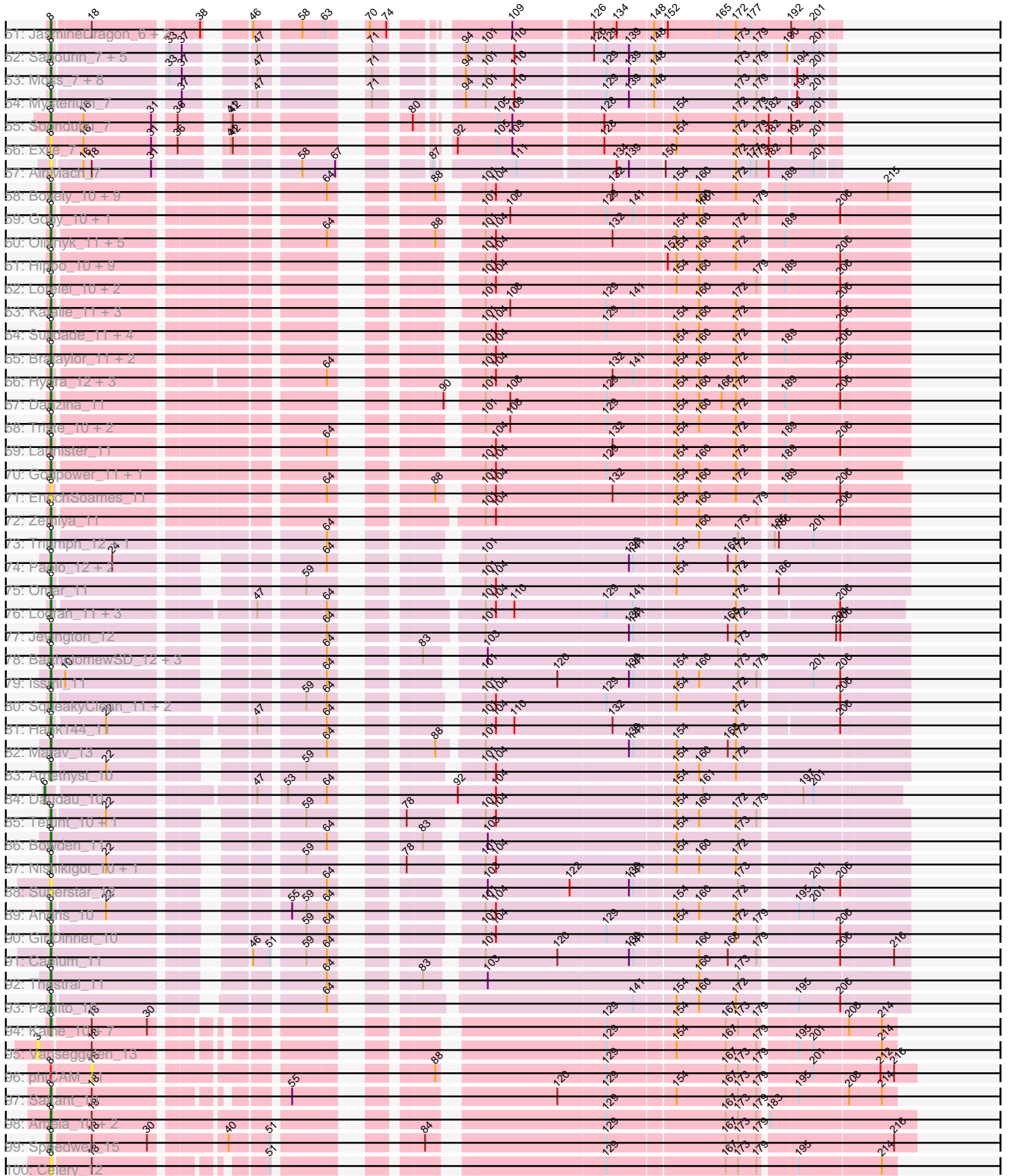
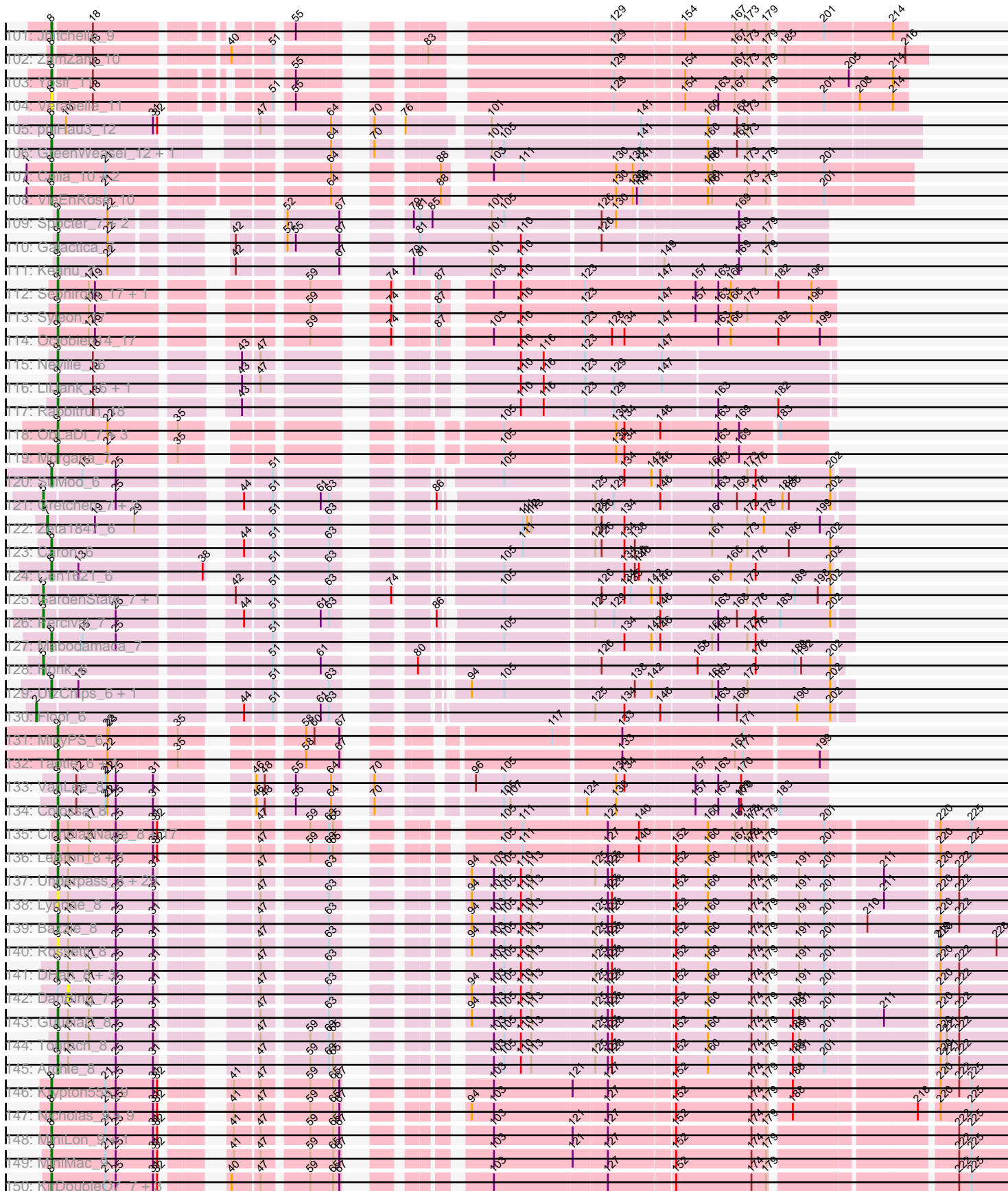




Pham 306025



Pham 306025





Note: Tracks are now grouped by subcluster and scaled. Switching in subcluster is indicated by changes in track color. Track scale is now set by default to display the region 30 bp upstream of start 1 to 30 bp downstream of the last possible start. If this default region is judged to be packed too tightly with annotated starts, the track will be further scaled to only show that region of the ORF with annotated starts. This action will be indicated by adding "Zoomed" to the title. For starts, yellow indicates the location of called starts comprised solely of Glimmer/GeneMark auto-annotations, green indicates the location of called starts with at least 1 manual gene annotation.

## Pham 306025 Report

This analysis was run 06/20/26 on database version 651.

WARNING: Pham size does not match number of genes in report. Either unphamerated genes have been added (by you) or starterator has removed genes due to invalid start codon.

Pham number 306025 has 385 members, 57 are drafts.

Phages represented in each track:

- Track 1 : Flutur\_7
- Track 2 : Michkear\_10
- Track 3 : ThursdayNight\_6
- Track 4 : Cassia\_7
- Track 5 : Eraser\_7, Jstan\_7, Asa16\_7, London\_7, Niobe\_7
- Track 6 : Pixelle\_7
- Track 7 : JuneStar\_7
- Track 8 : ObiToo\_7
- Track 9 : Elezi\_7, Skelbel\_7, Subaru\_7
- Track 10 : Nitro\_7
- Track 11 : Turab\_7, Amploria\_7
- Track 12 : MissSwiss\_7, PandaPo\_7
- Track 13 : Powerpuff\_7, Lego\_7, YesChef\_7, Tutumahutu\_7
- Track 14 : IttyBittyPiggy\_7
- Track 15 : AGrandiflora\_7, Warda\_7
- Track 16 : Amyev\_7, Tian\_7
- Track 17 : Tallboi\_7
- Track 18 : JohnDoe\_7, Cyan\_7
- Track 19 : AEgle\_7
- Track 20 : DrManhattan\_7, Adolin\_7
- Track 21 : Mudpuppy\_7, Tbone\_7
- Track 22 : Tuck\_8
- Track 23 : Joemato\_7, Kaylissa\_7, Simpson\_7
- Track 24 : Adumb2043\_7
- Track 25 : TforTroy\_7
- Track 26 : Wildwest\_8
- Track 27 : Reedo\_7
- Track 28 : Yang\_7
- Track 29 : VResidence\_7
- Track 30 : Phives\_8
- Track 31 : Berrie\_7
- Track 32 : KeAlii\_7
- Track 33 : Lizalica\_7

- Track 34 : lter\_7
- Track 35 : Schaffner\_7
- Track 36 : Janeemi\_8
- Track 37 : Sue2\_7
- Track 38 : Crewmate\_8
- Track 39 : DrSierra\_7
- Track 40 : Pumpkins\_7
- Track 41 : Ascela\_7
- Track 42 : Community\_8
- Track 43 : Liebe\_6, Maureen\_6, IUFootball\_6
- Track 44 : MaGuCo\_6
- Track 45 : Tweety19\_7
- Track 46 : Snek\_7
- Track 47 : Origami\_6, LadyAstra\_6
- Track 48 : AceofSpades\_6, VroomVroom\_6
- Track 49 : FiveHead\_6, JohnThicc\_6
- Track 50 : Emotion\_6
- Track 51 : JasmineDragon\_6, ShakeltOph\_6, MiniMommy\_6
- Track 52 : Sabourin\_7, Sooty\_7, Gambol\_7, Donkey\_7, Kalimba\_7, Cappuccino\_7
- Track 53 : Moss\_7, Halsey\_7, Stuu\_7, Ashes\_7, RockScotty\_7, Giorgio\_7, SpecialK\_7, Beaupre\_7, Gumpizza\_7
- Track 54 : Mysterium\_7
- Track 55 : Soondubu\_7
- Track 56 : Exile\_7
- Track 57 : AinMach\_7
- Track 58 : Bovely\_10, Nerdos\_10, Ozzie\_10, Aaronocolus\_10, Leviticus\_10, BeardedLady\_11, Esperer\_10, Indigo\_10, Phettuccine\_10, Caliburn\_10
- Track 59 : Goby\_10, Toma\_10
- Track 60 : Oliyinyk\_11, Rusticus\_11, Jash\_11, Eddasa\_11, BryanRecycles\_11, Izzy\_11
- Track 61 : Hippo\_10, Snorlax\_10, SarahRose\_10, Dwayne\_10, Whatever\_10, Chucky\_10, BarryBee\_12, Emaanora\_12, Werner\_10, TagePhighter\_11
- Track 62 : Lorelei\_10, Rana\_10, Nabi\_10
- Track 63 : Katalie\_11, RedBear\_12, Nanodon\_12, South40\_11
- Track 64 : Sujidade\_11, Maneekul\_10, TuanPN\_10, Ejemplo\_10, Yasdnil\_10
- Track 65 : Brataylor\_11, Celeste\_10, Dattran\_11
- Track 66 : Hydra\_12, SunsetPointe\_10, Unstoppable\_10, Legacy\_10
- Track 67 : Danzina\_11
- Track 68 : Triste\_10, Asten\_10, OzzyJ\_11
- Track 69 : Lannister\_11
- Track 70 : Godpower\_11, Lika\_10
- Track 71 : EnochSoames\_11
- Track 72 : Zemlya\_11
- Track 73 : Triumph\_12, Axiom\_11
- Track 74 : Paolo\_12, Zainub\_12, Puginator\_12
- Track 75 : Omar\_11
- Track 76 : Loofah\_11, R4\_10, ELB20\_09, Paedore\_10
- Track 77 : Jevington\_12
- Track 78 : BartholomewSD\_12, Alvy\_12, TrvxScott\_9, TinaBelcher\_10
- Track 79 : Issmi\_11
- Track 80 : SqueakyClean\_11, Janus\_11, Animus\_11
- Track 81 : Hank144\_11
- Track 82 : Marav\_13

- Track 83 : Amethyst\_10
- Track 84 : Daudau\_10
- Track 85 : Tefunt\_10, Haizum\_10
- Track 86 : Bowden\_11
- Track 87 : Nishikigoi\_10, Diane\_10
- Track 88 : Superstar\_12
- Track 89 : Andris\_10
- Track 90 : GirlDinner\_10
- Track 91 : Caelum\_11
- Track 92 : Thestral\_11
- Track 93 : Pablito\_10
- Track 94 : Kaine\_10, Conan\_11, Dexers\_9, ElGato\_11, Provolone\_11, Alsaber\_11, Sudan\_10, Pavo\_11
- Track 95 : Vanseggelen\_13
- Track 96 : phiCAM\_11
- Track 97 : Saftant\_10
- Track 98 : Amela\_10, Verse\_10, SunkenRoot\_12
- Track 99 : Speedwell\_15
- Track 100 : Celery\_12
- Track 101 : Jhitchelle\_9
- Track 102 : ZamZam\_10
- Track 103 : Yosif\_11
- Track 104 : Verabelle\_11
- Track 105 : phiHau3\_12
- Track 106 : GreenWeasel\_12, BroPlease\_11
- Track 107 : Celia\_10, Itza\_10, Urza\_10
- Track 108 : VieEnRose\_10
- Track 109 : Spocter\_7, Hiyaa\_7, Kokushibo\_8
- Track 110 : Galactica\_7
- Track 111 : Keanu\_7
- Track 112 : Sephiroth\_17, Kudofre\_16
- Track 113 : Syleon\_17
- Track 114 : Octobien14\_17
- Track 115 : Neville\_16
- Track 116 : LilJank\_16, Trax\_16
- Track 117 : Rabbitrun\_18
- Track 118 : ObLaDi\_7, ModicumRichard\_7, Cafasso\_7, Aleemily\_7
- Track 119 : Morgana\_7
- Track 120 : SuMoo\_6
- Track 121 : Gretchen\_7, Forester\_7, SuperHands\_7
- Track 122 : Zeta1847\_6
- Track 123 : Caron\_6
- Track 124 : Cen1621\_6
- Track 125 : GardenState\_7, IAmGroot\_7
- Track 126 : Percival\_7
- Track 127 : Mabodamaca\_7
- Track 128 : Honk\_6
- Track 129 : UtzChips\_6, Barnstormer\_6
- Track 130 : Floof\_6
- Track 131 : MicyPS\_6
- Track 132 : Taotie\_6, PSonyx\_6
- Track 133 : VanLee\_8
- Track 134 : Colossa\_8

- Track 135 : CicholasNage\_8, DirkDirk\_8, Calm\_8, OhShagHennessey\_8, Zaria\_8, AvadaKedavra\_8, JoeDirt\_8, Wamburggrxpress\_8, UPIE\_8, Silverleaf\_8, Acquire49\_8, Tyson\_8, Wyatt2\_8, Rose5\_8, Enceladus\_8, Halena\_8, MAckerman\_8, Poochiewood\_8
- Track 136 : LeBron\_8, Appletree2\_8
- Track 137 : Underpass\_8, Nicholasp3\_8, BobsGarage\_8, OverPar\_8, Miley16\_8, Zakai\_8, Loadrie\_8, Gardann\_8, SoJulia\_8, MkaliMitinis3\_8, BigCheese\_8, Faith1\_8, Breezona\_8, Itos\_8, Netyap\_8, LilDestine\_8, Gabriela\_8, Winky\_8, Sarshaun\_8, Lewan\_8, DrSeegs\_8, Rumpelstiltskin\_8, Vetrix\_8, Soap141\_8, Finemlucis\_8, Kahlid\_8, Wilder\_8, Crossroads\_8, Hafay\_8, Wigglewiggle\_8
- Track 138 : Lynnae\_8
- Track 139 : Bazzle\_8
- Track 140 : Rossetti\_8
- Track 141 : DHan\_8, Claus\_8, Baoshan\_7, ZhongYanYuan\_7
- Track 142 : DanBing\_7
- Track 143 : GuuelaD\_8
- Track 144 : Tourach\_8
- Track 145 : Archie\_8
- Track 146 : Krypton555\_9
- Track 147 : Nicholas\_9, Red305\_9, Clautastrophe\_9, Jobypre\_9, Lumos\_9, Jubie\_9, TriFive\_9, Kingsolomon\_9, Snenia\_9, MsGreen\_9
- Track 148 : MiniLon\_9, Lolly9\_9
- Track 149 : MiniMac\_9
- Track 150 : KirDoubleO7\_7, BourbonZero\_8, LiyuLake\_9, DuncansLeg\_9
- Track 151 : Bellis\_9, Moostard\_9, Samty\_9, Finnry\_9
- Track 152 : Ellson\_9
- Track 153 : Whirlwind\_10
- Track 154 : Douzhi\_8, PYPDinur\_8, Sheng711\_8, BrainDrainer\_9
- Track 155 : FarmResident\_8
- Track 156 : Douge\_8, Quby\_8
- Track 157 : DyoEdafos\_9
- Track 158 : ChutneyChips\_8
- Track 159 : Chaser\_8
- Track 160 : Bromden\_8
- Track 161 : Kropertea\_8
- Track 162 : Aegeus\_8, Baudelaire\_8
- Track 163 : TpudiCK\_19, Izel\_19, Glaske16\_19, Bricole\_18, IPhane7\_18, KleverKiS\_18, PegLeg\_18, Skinny\_19, TyDawg\_18, FreakyGoo\_19, Auspice\_18, Dulcita\_19, Diminimus\_19, LilhomieP\_17, Bongo\_18, SlimJimmy\_17
- Track 164 : RoseMarie\_18
- Track 165 : Reindeer\_16
- Track 166 : GenevaB15\_22, Aziz\_22, GardenSalsa\_22, MrMagoo\_22
- Track 167 : Estes\_23
- Track 168 : Rey\_22
- Track 169 : Nanosmite\_22
- Track 170 : RunningOnE\_67
- Track 171 : EniyanLRS\_27
- Track 172 : Cosmo\_30, Azrael100\_29
- Track 173 : MaryV\_30, Wildcat\_30
- Track 174 : Footloose\_6
- Track 175 : Attoomi\_7
- Track 176 : Ponzi\_46
- Track 177 : EmiRose\_6

- Track 178 : Kumao\_17

**Summary of Final Annotations (See graph section above for start numbers):**

The start number called the most often in the published annotations is 8, it was called in 212 of the 328 non-draft genes in the pham.

Genes that call this "Most Annotated" start:

- AEgle\_7, AGrandiflora\_7, Aaronocolus\_10, AceofSpades\_6, Adolin\_7, Adumb2043\_7, AinMach\_7, Alsaber\_11, Alvy\_12, Amela\_10, Amethyst\_10, Amploria\_7, Amyev\_7, Andris\_10, Animus\_11, Asa16\_7, Ascela\_7, Ashes\_7, Asten\_10, Axiom\_11, Barnstormer\_6, BarryBee\_12, BartholomewSD\_12, BeardedLady\_11, Beaupre\_7, Bellis\_9, Berrie\_7, BourbonZero\_8, Bovely\_10, Bowden\_11, Brataylor\_11, BroPlease\_11, BryanRecycles\_11, Caelum\_11, Caliburn\_10, Cappuccino\_7, Caron\_6, Cassia\_7, Celery\_12, Celeste\_10, Celia\_10, Cen1621\_6, Chucky\_10, Clautastrophe\_9, Community\_8, Conan\_11, Crewmate\_8, Cyan\_7, Danzina\_11, Dattran\_11, Dexters\_9, Diane\_10, Donkey\_7, DrManhattan\_7, DrSierra\_7, DuncansLeg\_9, Dwayne\_10, DyoEdafos\_9, ELB20\_09, Eddasa\_11, Ejemplo\_10, ElGato\_11, Elezi\_7, Ellson\_9, Emaanora\_12, EmiRose\_6, Emotion\_6, EnochSoames\_11, Eraser\_7, Esperer\_10, Exile\_7, Finnry\_9, FiveHead\_6, Flutur\_7, Footloose\_6, Gambol\_7, Giorgio\_7, GirlDinner\_10, Goby\_10, Godpower\_11, GreenWeasel\_12, Gumpizza\_7, Haizum\_10, Halsey\_7, Hank144\_11, Hippo\_10, Hydra\_12, IUFootball\_6, Indigo\_10, Issmi\_11, Iter\_7, IttyBittyPiggy\_7, Itza\_10, Izzy\_11, Janeemi\_8, Janus\_11, Jash\_11, JasmineDragon\_6, Jevington\_12, Jhitchelle\_9, Jobypre\_9, Joemato\_7, JohnDoe\_7, JohnThicc\_6, Jstan\_7, Jubie\_9, JuneStar\_7, Kaine\_10, Kalimba\_7, Katalie\_11, Kaylissa\_7, KeAlii\_7, Kingsolomon\_9, KirDouble07\_7, Kropertea\_8, Krypton555\_9, LadyAstra\_6, Lannister\_11, Legacy\_10, Lego\_7, Leviticus\_10, Liebe\_6, Lika\_10, LiyuLake\_9, Lizalica\_7, Lolly9\_9, London\_7, Loofah\_11, Lorelei\_10, Lumos\_9, MaGuCo\_6, Mabodamaca\_7, Maneekul\_10, Marav\_13, Maureen\_6, Michkear\_10, MiniLon\_9, MiniMac\_9, MiniMommy\_6, MissSwiss\_7, Moostard\_9, Moss\_7, MsGreen\_9, Mudpuppy\_7, Mysterium\_7, Nabi\_10, Nanodon\_12, Nerdos\_10, Nicholas\_9, Niobe\_7, Nishikigoi\_10, Nitro\_7, ObiToo\_7, Oliynyk\_11, Omar\_11, Origami\_6, Ozzie\_10, OzzyJ\_11, Pablito\_10, Paedore\_10, PandaPo\_7, Paolo\_12, Pavo\_11, Phettuccine\_10, Phives\_8, Pixelle\_7, Ponzi\_46, Powerpuff\_7, Provolone\_11, Puginator\_12, Pumpkins\_7, R4\_10, Rana\_10, Red305\_9, RedBear\_12, Reedo\_7, RockScotty\_7, RunningOnE\_67, Rusticus\_11, Sabourin\_7, Saftant\_10, Samty\_9, SarahRose\_10, Schaffner\_7, ShakeltOph\_6, Simpson\_7, Skelbel\_7, Snek\_7, Snenia\_9, Snorlax\_10, Soondubu\_7, Sooty\_7, South40\_11, SpecialK\_7, Speedwell\_15, SqueakyClean\_11, Stuu\_7, SuMoo\_6, Subaru\_7, Sudan\_10, Sue2\_7, Sujidade\_11, SunkenRoot\_12, SunsetPointe\_10, Superstar\_12, TagePhighter\_11, Tallboi\_7, Tbone\_7, Tefunt\_10, TforTroy\_7, Thestral\_11, ThursdayNight\_6, Tian\_7, TinaBelcher\_10, Toma\_10, TriFive\_9, Triste\_10, Triumph\_12, TrvxScott\_9, TuanPN\_10, Tuck\_8, Turab\_7, Tutumahutu\_7, Tweety19\_7, Unstoppable\_10, Urza\_10, UtzChips\_6, VResidence\_7, Verabelle\_11, Verse\_10, VieEnRose\_10, VroomVroom\_6, Warda\_7, Werner\_10, Whatever\_10, Whirlwind\_10, Wildwest\_8, Yang\_7, Yasdnil\_10, YesChef\_7, Yosif\_11, Zainub\_12, ZamZam\_10, Zemlya\_11, phiHau3\_12,

Genes that have the "Most Annotated" start but do not call it:

- phiCAM\_11,

Genes that do not have the "Most Annotated" start:

- Acquire49\_8, Aegeus\_8, Aleemily\_7, Appletree2\_8, Archie\_8, Attoomi\_7, Auspice\_18, AvadaKedavra\_8, Aziz\_22, Azrael100\_29, Baoshan\_7, Baudelaire\_8, Bazzle\_8, BigCheese\_8, BobsGarage\_8, Bongo\_18, BrainDrainer\_9, Breezona\_8, Bricole\_18, Bromden\_8, Cafasso\_7, Calm\_8, Chaser\_8, ChutneyChips\_8, CicholasNage\_8, Claus\_8, Colossa\_8, Cosmo\_30, Crossroads\_8, DHan\_8, DanBing\_7, Daudau\_10, Diminimus\_19, DirkDirk\_8, Douge\_8, Douzhi\_8, DrSeegs\_8, Dulcita\_19, Enceladus\_8, EniyanLRS\_27, Estes\_23, Faith1\_8, FarmResident\_8, Finemlucis\_8, Floof\_6, Forester\_7, FreakyGoo\_19, Gabriela\_8, Galactica\_7, Gardann\_8, GardenSalsa\_22, GardenState\_7, GenevaB15\_22, Glaske16\_19, Gretchen\_7, GuuelaD\_8, Hafay\_8, Halena\_8, Hiyaa\_7, Honk\_6, IAmGroot\_7, IPhane7\_18, Itos\_8, Izel\_19, JoeDirt\_8, Kahlid\_8, Keanu\_7, KleverKiS\_18, Kokushibo\_8, Kudrefre\_16, Kumao\_17, LeBron\_8, Lewan\_8, LilDestine\_8, LilJank\_16, LilhomieP\_17, Loadrie\_8, Lynnae\_8, MAckerman\_8, MaryV\_30, MicyPS\_6, Miley16\_8, MkaliMitinis3\_8, ModicumRichard\_7, Morgana\_7, MrMagoo\_22, Nanosmite\_22, Netyap\_8, Neville\_16, Nicholasp3\_8, ObLaDi\_7, Octobien14\_17, OhShagHennessy\_8, OverPar\_8, PSonyx\_6, PYPDinur\_8, PegLeg\_18, Percival\_7, Poochiewood\_8, Quby\_8, Rabbitrun\_18, Reindeer\_16, Rey\_22, Rose5\_8, RoseMarie\_18, Rossetti\_8, Rumpelstiltskin\_8, Sarshaun\_8, Sephiroth\_17, Sheng711\_8, Silverleaf\_8, Skinny\_19, SlimJimmy\_17, SoJulia\_8, Soap141\_8, Spocter\_7, SuperHands\_7, Syleon\_17, Taotie\_6, Tourach\_8, TpudiCK\_19, Trax\_16, TyDawg\_18, Tyson\_8, UPIE\_8, Underpass\_8, VanLee\_8, Vanseggelen\_13, Vetrix\_8, Wamburggrxpress\_8, Wigglewiggle\_8, Wildcat\_30, Wilder\_8, Winky\_8, Wyatt2\_8, Zakai\_8, Zaria\_8, Zeta1847\_6, ZhongYanYuan\_7,

### Summary by start number:

Start 2:

- Found in 1 of 385 ( 0.3% ) of genes in pham
- Manual Annotations of this start: 1 of 328
- Called 100.0% of time when present
- Phage (with cluster) where this start called: Floof\_6 (EH),

Start 3:

- Found in 1 of 385 ( 0.3% ) of genes in pham
- No Manual Annotations of this start.
- Called 100.0% of time when present
- Phage (with cluster) where this start called: Vanseggelen\_13 (BD3),

Start 5:

- Found in 7 of 385 ( 1.8% ) of genes in pham
- Manual Annotations of this start: 7 of 328
- Called 100.0% of time when present
- Phage (with cluster) where this start called: Forester\_7 (EH), GardenState\_7 (EH), Gretchen\_7 (EH), Honk\_6 (EH), IAmGroot\_7 (EH), Percival\_7 (EH), SuperHands\_7 (EH),

Start 6:

- Found in 1 of 385 ( 0.3% ) of genes in pham
- Manual Annotations of this start: 1 of 328
- Called 100.0% of time when present
- Phage (with cluster) where this start called: Daudau\_10 (BD2),

Start 7:

- Found in 1 of 385 ( 0.3% ) of genes in pham
- Manual Annotations of this start: 1 of 328
- Called 100.0% of time when present
- Phage (with cluster) where this start called: Zeta1847\_6 (EH),

Start 8:

- Found in 246 of 385 ( 63.9% ) of genes in pham
- Manual Annotations of this start: 212 of 328
- Called 99.6% of time when present
- Phage (with cluster) where this start called: AEgle\_7 (AZ1), AGrandiflora\_7 (AZ1), Aaronocolus\_10 (BD1), AceofSpades\_6 (AZ4), Adolin\_7 (AZ1), Adumb2043\_7 (AZ1), AinMach\_7 (AZ7), Alsaber\_11 (BD3), Alvy\_12 (BD2), Amela\_10 (BD3), Amethyst\_10 (BD2), Amploria\_7 (AZ1), Amyev\_7 (AZ1), Andris\_10 (BD2), Animus\_11 (BD2), Asa16\_7 (AZ1), Ascela\_7 (AZ1), Ashes\_7 (AZ5), Asten\_10 (BD1), Axiom\_11 (BD2), Barnstormer\_6 (EH), BarryBee\_12 (BD1), BartholomewSD\_12 (BD2), BeardedLady\_11 (BD1), Beaupre\_7 (AZ5), Bellis\_9 (L3), Berrie\_7 (AZ1), BourbonZero\_8 (L3), Bovely\_10 (BD1), Bowden\_11 (BD2), Brataylor\_11 (BD1), BroPlease\_11 (BD4), BryanRecycles\_11 (BD1), Caelum\_11 (BD2), Caliburn\_10 (BD1), Cappuccino\_7 (AZ5), Caron\_6 (EH), Cassia\_7 (AZ1), Celery\_12 (BD3), Celeste\_10 (BD1), Celia\_10 (BD6), Cen1621\_6 (EH), Chucky\_10 (BD1), Clautastrophe\_9 (L3), Community\_8 (AZ1), Conan\_11 (BD3), Crewmate\_8 (AZ1), Cyan\_7 (AZ1), Danzina\_11 (BD1), Dattran\_11 (BD1), Dexers\_9 (BD3), Diane\_10 (BD2), Donkey\_7 (AZ5), DrManhattan\_7 (AZ1), DrSierra\_7 (AZ1), DuncansLeg\_9 (L3), Dwayne\_10 (BD1), DyoEdafos\_9 (L4), ELB20\_09 (BD2), Eddasa\_11 (BD1), Ejemplo\_10 (BD1), ElGato\_11 (BD3), Elezi\_7 (AZ1), Ellson\_9 (L3), Emaanora\_12 (BD1), EmiRose\_6 (singleton), Emotion\_6 (AZ4), EnochSoames\_11 (BD1), Eraser\_7 (AZ1), Esperer\_10 (BD1), Exile\_7 (AZ6), Finnry\_9 (L3), FiveHead\_6 (AZ4), Flutur\_7 (AZ), Footloose\_6 (singleton), Gambol\_7 (AZ5), Giorgio\_7 (AZ5), GirlDinner\_10 (BD2), Goby\_10 (BD1), Godpower\_11 (BD1), GreenWeasel\_12 (BD4), Gumpizza\_7 (AZ5), Haizum\_10 (BD2), Halsey\_7 (AZ5), Hank144\_11 (BD2), Hippo\_10 (BD1), Hydra\_12 (BD1), IUFootball\_6 (AZ2), Indigo\_10 (BD1), Issmi\_11 (BD2), Iter\_7 (AZ1), IttyBittyPiggy\_7 (AZ1), Itza\_10 (BD6), Izzy\_11 (BD1), Janeemi\_8 (AZ1), Janus\_11 (BD2), Jash\_11 (BD1), JasmineDragon\_6 (AZ4), Jevington\_12 (BD2), Jhitchelle\_9 (BD3), Jobypre\_9 (L3), Joemato\_7 (AZ1), JohnDoe\_7 (AZ1), JohnThicc\_6 (AZ4), Jstan\_7 (AZ1), Jubie\_9 (L3), JuneStar\_7 (AZ1), Kaine\_10 (BD3), Kalimba\_7 (AZ5), Katalie\_11 (BD1), Kaylissa\_7 (AZ1), KeAlii\_7 (AZ1), Kingsolomon\_9 (L3), KirDoubleO7\_7 (L3), Kropertea\_8 (L4), Krypton555\_9 (L3), LadyAstra\_6 (AZ4), Lannister\_11 (BD1), Legacy\_10 (BD1), Lego\_7 (AZ1), Leviticus\_10 (BD1), Liebe\_6 (AZ2), Lika\_10 (BD1), LiyuLake\_9 (L3), Lizalica\_7 (AZ1), Lolly9\_9 (L3), London\_7 (AZ1), Loofah\_11 (BD2), Lorelei\_10 (BD1), Lumos\_9 (L3), MaGuCo\_6 (AZ2), Mabodamaca\_7 (EH), Maneekul\_10 (BD1), Marav\_13 (BD2), Maureen\_6 (AZ2), Michkear\_10 (AZ), MiniLon\_9 (L3), MiniMac\_9 (L3), MiniMommy\_6 (AZ4), MissSwiss\_7 (AZ1), Moostard\_9 (L3), Moss\_7 (AZ5), MsGreen\_9 (L3), Mudpuppy\_7 (AZ1), Mysterium\_7 (AZ5), Nabi\_10 (BD1), Nanodon\_12 (BD1), Nerdos\_10 (BD1), Nicholas\_9 (L3), Niobe\_7 (AZ1), Nishikigoi\_10 (BD2), Nitro\_7 (AZ1), ObiToo\_7 (AZ1), Oliynyk\_11 (BD1), Omar\_11 (BD2), Origami\_6 (AZ4), Ozzie\_10 (BD1), OzzyJ\_11 (BD1), Pablito\_10 (BD2), Paedore\_10 (BD2), PandaPo\_7 (AZ1), Paolo\_12 (BD2), Pavo\_11 (BD3), Phettuccine\_10 (BD1), Phives\_8 (AZ1), Pixelle\_7 (AZ1), Ponzi\_46 (singleton), Powerpuff\_7 (AZ1), Provolone\_11 (BD3), Puginator\_12 (BD2), Pumpkins\_7 (AZ1), R4\_10 (BD2), Rana\_10 (BD1), Red305\_9 (L3), RedBear\_12 (BD1), Reedo\_7 (AZ1), RockScotty\_7 (AZ5), RunningOnE\_67 (UNK), Rusticus\_11

(BD1), Sabourin\_7 (AZ5), Saftant\_10 (BD3), Samty\_9 (L3), SarahRose\_10 (BD1), Schaffner\_7 (AZ1), ShakeltOph\_6 (AZ4), Simpson\_7 (AZ1), Skelbel\_7 (AZ1), Snek\_7 (AZ3), Snenia\_9 (L3), Snorlax\_10 (BD1), Soondubu\_7 (AZ6), Sooty\_7 (AZ5), South40\_11 (BD1), SpecialK\_7 (AZ5), Speedwell\_15 (BD3), SqueakyClean\_11 (BD2), Stuu\_7 (AZ5), SuMoo\_6 (EH), Subaru\_7 (AZ1), Sudan\_10 (BD3), Sue2\_7 (AZ1), Sujidade\_11 (BD1), SunkenRoot\_12 (BD3), SunsetPointe\_10 (BD1), Superstar\_12 (BD2), TagePhighter\_11 (BD1), Tallboi\_7 (AZ1), Tbone\_7 (AZ1), Tefunt\_10 (BD2), TforTroy\_7 (AZ1), Thestral\_11 (BD2), ThursdayNight\_6 (AZ), Tian\_7 (AZ1), TinaBelcher\_10 (BD2), Toma\_10 (BD1), TriFive\_9 (L3), Triste\_10 (BD1), Triumph\_12 (BD2), TrvxScott\_9 (BD2), TuanPN\_10 (BD1), Tuck\_8 (AZ1), Turab\_7 (AZ1), Tutumahutu\_7 (AZ1), Tweety19\_7 (AZ3), Unstoppable\_10 (BD1), Urza\_10 (BD6), UtzChips\_6 (EH), VResidence\_7 (AZ1), Verabelle\_11 (BD3), Verse\_10 (BD3), VieEnRose\_10 (BD6), VroomVroom\_6 (AZ4), Warda\_7 (AZ1), Werner\_10 (BD1), Whatever\_10 (BD1), Whirlwind\_10 (L3), Wildwest\_8 (AZ1), Yang\_7 (AZ1), Yasdnil\_10 (BD1), YesChef\_7 (AZ1), Yosif\_11 (BD3), Zainub\_12 (BD2), ZamZam\_10 (BD3), Zemlya\_11 (BD1), phiHau3\_12 (BD4),

#### Start 9:

- Found in 128 of 385 ( 33.2% ) of genes in pham
- Manual Annotations of this start: 106 of 328
- Called 99.2% of time when present
- Phage (with cluster) where this start called: Acquire49\_8 (L1), Aegeus\_8 (L5), Aleemily\_7 (DZ), Appletree2\_8 (L1), Archie\_8 (L2), Attoomi\_7 (singleton), Auspice\_18 (M1), AvadaKedavra\_8 (L1), Aziz\_22 (M2), Azrael100\_29 (V), Baoshan\_7 (L2), Baudelaire\_8 (L5), Bazzle\_8 (L2), BigCheese\_8 (L2), BobsGarage\_8 (L2), Bongo\_18 (M1), BrainDrainer\_9 (L4), Breezona\_8 (L2), Bricole\_18 (M1), Bromden\_8 (L4), Cafasso\_7 (DZ), Calm\_8 (L1), Chaser\_8 (L4), ChutneyChips\_8 (L4), CicholasNage\_8 (L1), Claus\_8 (L2), Colossa\_8 (KA), Cosmo\_30 (V), Crossroads\_8 (L2), DHan\_8 (L2), Diminimus\_19 (M1), DirkDirk\_8 (L1), Douge\_8 (L4), Douzhi\_8 (L4), DrSeegs\_8 (L2), Dulcita\_19 (M1), Enceladus\_8 (L1), EniyanLRS\_27 (V), Estes\_23 (M2), Faith1\_8 (L2), FarmResident\_8 (L4), Finemlucis\_8 (L2), FreakyGoo\_19 (M1), Gabriela\_8 (L2), Galactica\_7 (BQ), Gardann\_8 (L2), GardenSalsa\_22 (M2), GenevaB15\_22 (M2), Glaske16\_19 (M1), GuuelaD\_8 (L2), Hafay\_8 (L2), Halena\_8 (L1), Hiyaa\_7 (BQ), IPhane7\_18 (M1), Itos\_8 (L2), Izel\_19 (M1), JoeDirt\_8 (L1), Kahlid\_8 (L2), Keanu\_7 (BQ), KleverKiS\_18 (M1), Kokushibo\_8 (BQ), Kudrefre\_16 (DU1), Kumao\_17 (singleton), LeBron\_8 (L1), Lewan\_8 (L2), LilDestine\_8 (L2), LilJank\_16 (DU2), LilhomieP\_17 (M1), Loadrie\_8 (L2), Lynnae\_8 (L2), MAckerman\_8 (L1), MaryV\_30 (V), MicyPS\_6 (EQ), Miley16\_8 (L2), MkaliMitinis3\_8 (L2), ModicumRichard\_7 (DZ), Morgana\_7 (DZ), MrMagoo\_22 (M2), Nanosmite\_22 (M3), Netyap\_8 (L2), Neville\_16 (DU2), Nicholasp3\_8 (L2), ObLaDi\_7 (DZ), Octobien14\_17 (DU1), OhShagHennessy\_8 (L1), OverPar\_8 (L2), PSonyx\_6 (EQ), PYPDinur\_8 (L4), PegLeg\_18 (M1), Poochiewood\_8 (L1), Quby\_8 (L4), Rabbitrun\_18 (DU2), Reindeer\_16 (M1), Rey\_22 (M2), Rose5\_8 (L1), RoseMarie\_18 (M1), Rossetti\_8 (L2), Rumpelstiltskin\_8 (L2), Sarshaun\_8 (L2), Sephiroth\_17 (DU1), Sheng711\_8 (L4), Silverleaf\_8 (L1), Skinny\_19 (M1), SlimJimmy\_17 (M1), SoJulia\_8 (L2), Soap141\_8 (L2), Spocter\_7 (BQ), Syleon\_17 (DU1), Taotie\_6 (EQ), Tourach\_8 (L2), TpudiCK\_19 (M1), Trax\_16 (DU2), TyDawg\_18 (M1), Tyson\_8 (L1), UPIE\_8 (L1), Underpass\_8 (L2), VanLee\_8 (KA), Vetrix\_8 (L2), Wamburggrxpress\_8 (L1), Wigglewiggle\_8 (L2), Wildcat\_30 (V), Wilder\_8 (L2), Winky\_8 (L2), Wyatt2\_8 (L1), Zakai\_8 (L2), Zaria\_8 (L1), ZhongYanYuan\_7 (L2),

#### Start 11:

- Found in 61 of 385 ( 15.8% ) of genes in pham

- No Manual Annotations of this start.
- Called 1.6% of time when present
- Phage (with cluster) where this start called: DanBing\_7 (L2),

Start 18:

- Found in 95 of 385 ( 24.7% ) of genes in pham
- No Manual Annotations of this start.
- Called 1.1% of time when present
- Phage (with cluster) where this start called: phiCAM\_11 (BD3),

### **Summary by clusters:**

There are 31 clusters represented in this pham: singleton, L1, M1, BQ, M3, M2, UNK, BD4, BD6, BD1, BD3, BD2, DU1, DZ, EH, L4, L5, L2, L3, V, AZ, EQ, DU2, KA, AZ1, AZ2, AZ3, AZ4, AZ5, AZ6, AZ7,

Info for manual annotations of cluster AZ1:

- Start number 8 was manually annotated 46 times for cluster AZ1.

Info for manual annotations of cluster AZ2:

- Start number 8 was manually annotated 3 times for cluster AZ2.

Info for manual annotations of cluster AZ3:

- Start number 8 was manually annotated 2 times for cluster AZ3.

Info for manual annotations of cluster AZ4:

- Start number 8 was manually annotated 5 times for cluster AZ4.

Info for manual annotations of cluster AZ5:

- Start number 8 was manually annotated 16 times for cluster AZ5.

Info for manual annotations of cluster AZ6:

- Start number 8 was manually annotated 1 time for cluster AZ6.

Info for manual annotations of cluster BD1:

- Start number 8 was manually annotated 55 times for cluster BD1.

Info for manual annotations of cluster BD2:

- Start number 6 was manually annotated 1 time for cluster BD2.
- Start number 8 was manually annotated 32 times for cluster BD2.

Info for manual annotations of cluster BD3:

- Start number 8 was manually annotated 15 times for cluster BD3.

Info for manual annotations of cluster BD4:

- Start number 8 was manually annotated 3 times for cluster BD4.

Info for manual annotations of cluster BD6:

- Start number 8 was manually annotated 4 times for cluster BD6.

Info for manual annotations of cluster BQ:

- Start number 9 was manually annotated 4 times for cluster BQ.

Info for manual annotations of cluster DU1:

- Start number 9 was manually annotated 4 times for cluster DU1.

Info for manual annotations of cluster DU2:

- Start number 9 was manually annotated 3 times for cluster DU2.

Info for manual annotations of cluster DZ:

- Start number 9 was manually annotated 5 times for cluster DZ.

Info for manual annotations of cluster EH:

- Start number 2 was manually annotated 1 time for cluster EH.
- Start number 5 was manually annotated 7 times for cluster EH.
- Start number 7 was manually annotated 1 time for cluster EH.
- Start number 8 was manually annotated 6 times for cluster EH.

Info for manual annotations of cluster EQ:

- Start number 9 was manually annotated 2 times for cluster EQ.

Info for manual annotations of cluster KA:

- Start number 9 was manually annotated 2 times for cluster KA.

Info for manual annotations of cluster L1:

- Start number 9 was manually annotated 19 times for cluster L1.

Info for manual annotations of cluster L2:

- Start number 9 was manually annotated 32 times for cluster L2.

Info for manual annotations of cluster L3:

- Start number 8 was manually annotated 19 times for cluster L3.

Info for manual annotations of cluster L4:

- Start number 8 was manually annotated 2 times for cluster L4.
- Start number 9 was manually annotated 4 times for cluster L4.

Info for manual annotations of cluster L5:

- Start number 9 was manually annotated 2 times for cluster L5.

Info for manual annotations of cluster M1:

- Start number 9 was manually annotated 15 times for cluster M1.

Info for manual annotations of cluster M2:

- Start number 9 was manually annotated 6 times for cluster M2.

Info for manual annotations of cluster M3:

- Start number 9 was manually annotated 1 time for cluster M3.

Info for manual annotations of cluster V:

- Start number 9 was manually annotated 5 times for cluster V.

### **Gene Information:**

Gene: AEgle\_7 Start: 6836, Stop: 7783, Start Num: 8

Candidate Starts for AEgle\_7:

(Start: 8 @6836 has 212 MA's), (17, 6881), (18, 6887), (32, 6980), (38, 7028), (46, 7070), (66, 7169), (71, 7187), (94, 7271), (105, 7316), (125, 7436), (134, 7478), (139, 7496), (165, 7619), (168, 7631), (172, 7643), (173, 7646), (179, 7673), (192, 7721), (201, 7754),

Gene: AGrandiflora\_7 Start: 6817, Stop: 7764, Start Num: 8

Candidate Starts for AGrandiflora\_7:

(Start: 8 @6817 has 212 MA's), (18, 6868), (25, 6901), (46, 7051), (63, 7141), (71, 7168), (105, 7297), (109, 7318), (125, 7417), (126, 7426), (139, 7477), (158, 7555), (165, 7600), (166, 7603), (172, 7624), (179, 7654), (194, 7711), (201, 7735),

Gene: Aaronocolus\_10 Start: 7251, Stop: 8324, Start Num: 8

Candidate Starts for Aaronocolus\_10:

(Start: 8 @7251 has 212 MA's), (64, 7602), (88, 7698), (101, 7743), (104, 7758), (132, 7926), (154, 8010), (160, 8040), (172, 8094), (189, 8154), (215, 8292),

Gene: AceofSpades\_6 Start: 5167, Stop: 6108, Start Num: 8

Candidate Starts for AceofSpades\_6:

(Start: 8 @5167 has 212 MA's), (18, 5218), (38, 5359), (46, 5401), (58, 5458), (63, 5491), (70, 5515), (71, 5518), (105, 5647), (109, 5668), (126, 5776), (134, 5809), (148, 5860), (152, 5875), (165, 5947), (172, 5971), (177, 5992), (192, 6049), (201, 6082),

Gene: Acquire49\_8 Start: 6084, Stop: 7235, Start Num: 9

Candidate Starts for Acquire49\_8:

(Start: 9 @6084 has 106 MA's), (11, 6099), (17, 6129), (25, 6168), (31, 6222), (32, 6228), (47, 6318), (59, 6375), (63, 6402), (65, 6408), (105, 6558), (111, 6585), (127, 6702), (140, 6747), (160, 6837), (167, 6876), (173, 6894), (174, 6900), (179, 6921), (201, 6990), (220, 7131), (225, 7176),

Gene: Adolin\_7 Start: 6839, Stop: 7780, Start Num: 8

Candidate Starts for Adolin\_7:

(Start: 8 @6839 has 212 MA's), (18, 6890), (31, 6977), (33, 6989), (41, 7043), (53, 7106), (58, 7127), (70, 7184), (94, 7271), (110, 7340), (139, 7496), (165, 7616), (172, 7640), (173, 7643), (177, 7661), (179, 7670), (182, 7685), (201, 7751),

Gene: Adumb2043\_7 Start: 6835, Stop: 7782, Start Num: 8

Candidate Starts for Adumb2043\_7:

(Start: 8 @6835 has 212 MA's), (17, 6880), (18, 6886), (32, 6979), (38, 7027), (46, 7069), (66, 7168), (71, 7186), (74, 7207), (80, 7228), (105, 7315), (125, 7435), (134, 7477), (158, 7573), (165, 7618), (168, 7630), (172, 7642), (173, 7645), (179, 7672), (192, 7720), (201, 7753),

Gene: Aegeus\_8 Start: 5659, Stop: 6843, Start Num: 9

Candidate Starts for Aegeus\_8:

(Start: 9 @5659 has 106 MA's), (19, 5713), (25, 5743), (27, 5758), (34, 5815), (41, 5866), (42, 5869), (47, 5899), (53, 5929), (55, 5935), (58, 5950), (59, 5956), (77, 6040), (102, 6124), (109, 6160), (114, 6190), (126, 6274), (128, 6289), (129, 6292), (134, 6307), (163, 6439), (167, 6463), (172, 6478), (178, 6505), (182, 6511), (188, 6532), (191, 6541), (193, 6547), (194, 6553), (200, 6574), (203, 6595), (207, 6625), (209, 6631), (210, 6637), (211, 6661), (215, 6682), (218, 6709), (220, 6742), (222, 6769), (227, 6811), (229, 6829), (231, 6835),

Gene: AinMach\_7 Start: 6051, Stop: 6995, Start Num: 8

Candidate Starts for AinMach\_7:

(Start: 8 @6051 has 212 MA's), (16, 6090), (18, 6102), (31, 6189), (58, 6342), (67, 6390), (87, 6462), (111, 6558), (134, 6693), (139, 6711), (150, 6756), (172, 6855), (177, 6876), (179, 6885), (182, 6900), (201, 6966),

Gene: Aleemily\_7 Start: 5963, Stop: 6880, Start Num: 9

Candidate Starts for Aleemily\_7:

(Start: 9 @5963 has 106 MA's), (22, 6035), (35, 6122), (105, 6440), (130, 6593), (134, 6605), (146, 6653), (163, 6731), (169, 6761), (183, 6812),

Gene: Alsaber\_11 Start: 7357, Stop: 8385, Start Num: 8

Candidate Starts for Alsaber\_11:

(Start: 8 @7357 has 212 MA's), (18, 7411), (30, 7492), (129, 7990), (154, 8083), (167, 8155), (173, 8173), (179, 8200), (208, 8317), (214, 8365),

Gene: Alvy\_12 Start: 7187, Stop: 8245, Start Num: 8

Candidate Starts for Alvy\_12:

(Start: 8 @7187 has 212 MA's), (64, 7517), (83, 7595), (103, 7661), (173, 8015),

Gene: Amela\_10 Start: 7412, Stop: 8494, Start Num: 8

Candidate Starts for Amela\_10:

(Start: 8 @7412 has 212 MA's), (18, 7469), (129, 8072), (167, 8237), (173, 8255), (179, 8282), (183, 8291),

Gene: Amethyst\_10 Start: 7012, Stop: 8058, Start Num: 8

Candidate Starts for Amethyst\_10:

(Start: 8 @7012 has 212 MA's), (22, 7087), (59, 7309), (101, 7477), (104, 7492), (154, 7744), (160, 7774), (172, 7828),

Gene: Amploria\_7 Start: 6835, Stop: 7782, Start Num: 8

Candidate Starts for Amploria\_7:

(Start: 8 @6835 has 212 MA's), (17, 6880), (18, 6886), (32, 6979), (38, 7027), (46, 7069), (66, 7168), (71, 7186), (74, 7207), (80, 7228), (105, 7315), (125, 7435), (134, 7477), (158, 7573), (165, 7618), (168, 7630), (172, 7642), (179, 7672), (192, 7720), (201, 7753),

Gene: Amyev\_7 Start: 6849, Stop: 7799, Start Num: 8

Candidate Starts for Amyev\_7:

(Start: 8 @6849 has 212 MA's), (18, 6900), (38, 7041), (46, 7083), (71, 7200), (105, 7329), (111, 7356), (125, 7449), (158, 7587), (165, 7632), (168, 7644), (172, 7656), (179, 7686), (182, 7701), (194, 7743), (201, 7767),

Gene: Andris\_10 Start: 7074, Stop: 8120, Start Num: 8

Candidate Starts for Andris\_10:

(Start: 8 @7074 has 212 MA's), (22, 7149), (55, 7350), (59, 7371), (64, 7398), (101, 7539), (104, 7554), (154, 7806), (160, 7836), (172, 7890), (195, 7968), (201, 7989),

Gene: Animus\_11 Start: 7423, Stop: 8469, Start Num: 8

Candidate Starts for Animus\_11:

(Start: 8 @7423 has 212 MA's), (59, 7720), (64, 7747), (101, 7888), (104, 7903), (129, 8062), (154, 8155), (172, 8239), (206, 8377),

Gene: Appletree2\_8 Start: 6058, Stop: 7209, Start Num: 9

Candidate Starts for Appletree2\_8:

(Start: 9 @6058 has 106 MA's), (11, 6073), (17, 6103), (25, 6142), (31, 6196), (32, 6202), (47, 6292), (59, 6349), (63, 6376), (65, 6382), (105, 6532), (111, 6559), (127, 6676), (140, 6721), (152, 6766), (160, 6811), (167, 6850), (173, 6868), (174, 6874), (179, 6895), (201, 6964), (220, 7105), (225, 7150),

Gene: Archie\_8 Start: 6044, Stop: 7192, Start Num: 9

Candidate Starts for Archie\_8:

(Start: 9 @6044 has 106 MA's), (11, 6059), (25, 6128), (31, 6182), (47, 6278), (59, 6335), (63, 6362), (65, 6368), (103, 6503), (105, 6518), (110, 6542), (113, 6557), (125, 6644), (127, 6662), (128, 6668), (152, 6752), (160, 6797), (174, 6860), (179, 6881), (188, 6905), (191, 6914), (201, 6950), (220, 7091), (221, 7100), (222, 7118),

Gene: Asa16\_7 Start: 6808, Stop: 7752, Start Num: 8

Candidate Starts for Asa16\_7:

(Start: 8 @6808 has 212 MA's), (18, 6859), (31, 6946), (32, 6952), (38, 7000), (41, 7015), (46, 7042), (94, 7243), (125, 7408), (139, 7468), (158, 7546), (165, 7591), (168, 7603), (172, 7615), (173, 7618), (179, 7645), (192, 7693), (194, 7702), (201, 7726),

Gene: Ascela\_7 Start: 6834, Stop: 7778, Start Num: 8

Candidate Starts for Ascela\_7:

(Start: 8 @6834 has 212 MA's), (18, 6885), (31, 6972), (38, 7026), (46, 7068), (71, 7185), (72, 7194), (94, 7269), (125, 7434), (134, 7476), (139, 7494), (158, 7572), (165, 7617), (168, 7629), (172, 7641), (179, 7671), (192, 7719), (201, 7752),

Gene: Ashes\_7 Start: 6333, Stop: 7259, Start Num: 8

Candidate Starts for Ashes\_7:

(Start: 8 @6333 has 212 MA's), (33, 6483), (37, 6498), (47, 6570), (71, 6681), (94, 6765), (101, 6792), (110, 6834), (129, 6957), (139, 6990), (148, 7023), (173, 7140), (179, 7167), (194, 7212), (201, 7236),

Gene: Asten\_10 Start: 7217, Stop: 8287, Start Num: 8

Candidate Starts for Asten\_10:

(Start: 8 @7217 has 212 MA's), (101, 7709), (108, 7745), (129, 7883), (154, 7976), (160, 8006), (172, 8060),

Gene: Attoomi\_7 Start: 5662, Stop: 6576, Start Num: 9

Candidate Starts for Attoomi\_7:

(Start: 9 @5662 has 106 MA's), (20, 5728), (25, 5746), (30, 5794), (41, 5866), (72, 6019), (74, 6031), (77, 6040), (87, 6073), (98, 6109), (111, 6169), (113, 6181), (119, 6220), (125, 6262), (129, 6289), (161, 6421), (174, 6478), (179, 6499), (182, 6511),

Gene: Auspice\_18 Start: 9854, Stop: 11017, Start Num: 9

Candidate Starts for Auspice\_18:

(Start: 9 @9854 has 106 MA's), (25, 9938), (40, 10058), (41, 10061), (60, 10157), (63, 10178), (74, 10226), (89, 10271), (98, 10301), (105, 10334), (113, 10373), (128, 10484), (129, 10487), (131, 10493), (144, 10547), (151, 10574), (156, 10601), (160, 10619), (173, 10676), (177, 10694), (181, 10715), (190, 10748), (213, 10877), (220, 10931), (223, 10970),

Gene: AvadaKedavra\_8 Start: 6084, Stop: 7235, Start Num: 9

Candidate Starts for AvadaKedavra\_8:

(Start: 9 @6084 has 106 MA's), (11, 6099), (17, 6129), (25, 6168), (31, 6222), (32, 6228), (47, 6318), (59, 6375), (63, 6402), (65, 6408), (105, 6558), (111, 6585), (127, 6702), (140, 6747), (160, 6837), (167, 6876), (173, 6894), (174, 6900), (179, 6921), (201, 6990), (220, 7131), (225, 7176),

Gene: Axiom\_11 Start: 7081, Stop: 8154, Start Num: 8

Candidate Starts for Axiom\_11:

(Start: 8 @7081 has 212 MA's), (64, 7432), (160, 7870), (173, 7927), (185, 7969), (186, 7975), (201, 8023),

Gene: Aziz\_22 Start: 10415, Stop: 11581, Start Num: 9

Candidate Starts for Aziz\_22:

(Start: 9 @10415 has 106 MA's), (25, 10499), (28, 10523), (33, 10565), (40, 10619), (50, 10670), (60, 10718), (67, 10754), (70, 10763), (74, 10787), (86, 10823), (97, 10859), (108, 10913), (118, 10967), (128, 11045), (129, 11048), (144, 11108), (151, 11135), (156, 11162), (160, 11180), (173, 11237), (177, 11255), (181, 11276), (190, 11309), (213, 11444), (217, 11474), (219, 11495), (221, 11507),

Gene: Azrael100\_29 Start: 12971, Stop: 14149, Start Num: 9

Candidate Starts for Azrael100\_29:

(Start: 9 @12971 has 106 MA's), (13, 13001), (18, 13022), (25, 13055), (31, 13109), (32, 13115), (50, 13226), (54, 13244), (58, 13262), (70, 13319), (77, 13352), (111, 13484), (113, 13496), (115, 13511), (122, 13559), (133, 13622), (144, 13670), (151, 13697), (161, 13745), (164, 13757), (179, 13823), (207, 13952), (209, 13958), (211, 13988), (224, 14096), (230, 14144),

Gene: Baoshan\_7 Start: 5899, Stop: 7047, Start Num: 9

Candidate Starts for Baoshan\_7:

(Start: 9 @5899 has 106 MA's), (11, 5914), (17, 5944), (25, 5983), (31, 6037), (47, 6133), (63, 6217), (103, 6358), (105, 6373), (110, 6397), (113, 6412), (125, 6499), (127, 6517), (128, 6523), (152, 6607), (160, 6652), (174, 6715), (179, 6736), (191, 6769), (201, 6805), (220, 6946), (222, 6973),

Gene: Barnstormer\_6 Start: 6067, Stop: 7035, Start Num: 8

Candidate Starts for Barnstormer\_6:

(Start: 8 @6067 has 212 MA's), (13, 6100), (51, 6328), (63, 6397), (94, 6514), (105, 6559), (138, 6736), (142, 6760), (161, 6838), (163, 6847), (173, 6889), (202, 7006),

Gene: BarryBee\_12 Start: 7220, Stop: 8293, Start Num: 8

Candidate Starts for BarryBee\_12:

(Start: 8 @7220 has 212 MA's), (101, 7712), (104, 7727), (152, 7967), (154, 7979), (160, 8009), (172, 8063), (206, 8201),

Gene: BartholomewSD\_12 Start: 7187, Stop: 8245, Start Num: 8

Candidate Starts for BartholomewSD\_12:

(Start: 8 @7187 has 212 MA's), (64, 7517), (83, 7595), (103, 7661), (173, 8015),

Gene: Baudelaire\_8 Start: 5659, Stop: 6843, Start Num: 9

Candidate Starts for Baudelaire\_8:

(Start: 9 @5659 has 106 MA's), (19, 5713), (25, 5743), (27, 5758), (34, 5815), (41, 5866), (42, 5869), (47, 5899), (53, 5929), (55, 5935), (58, 5950), (59, 5956), (77, 6040), (102, 6124), (109, 6160), (114, 6190), (126, 6274), (128, 6289), (129, 6292), (134, 6307), (163, 6439), (167, 6463), (172, 6478), (178, 6505), (182, 6511), (188, 6532), (191, 6541), (193, 6547), (194, 6553), (200, 6574), (203, 6595), (207, 6625), (209, 6631), (210, 6637), (211, 6661), (215, 6682), (218, 6709), (220, 6742), (222, 6769), (227, 6811), (229, 6829), (231, 6835),

Gene: Bazzle\_8 Start: 6020, Stop: 7168, Start Num: 9

Candidate Starts for Bazzle\_8:

(Start: 9 @6020 has 106 MA's), (11, 6035), (25, 6104), (31, 6158), (47, 6254), (63, 6338), (94, 6449), (103, 6479), (105, 6494), (110, 6518), (113, 6533), (125, 6620), (127, 6638), (128, 6644), (152, 6728), (160, 6773), (174, 6836), (179, 6857), (191, 6890), (201, 6926), (210, 6977), (220, 7067), (222, 7094),

Gene: BeardedLady\_11 Start: 7498, Stop: 8571, Start Num: 8

Candidate Starts for BeardedLady\_11:

(Start: 8 @7498 has 212 MA's), (64, 7849), (88, 7945), (101, 7990), (104, 8005), (132, 8173), (154, 8257), (160, 8287), (172, 8341), (189, 8401), (215, 8539),

Gene: Beaupre\_7 Start: 6334, Stop: 7260, Start Num: 8

Candidate Starts for Beaupre\_7:

(Start: 8 @6334 has 212 MA's), (33, 6484), (37, 6499), (47, 6571), (71, 6682), (94, 6766), (101, 6793), (110, 6835), (129, 6958), (139, 6991), (148, 7024), (173, 7141), (179, 7168), (194, 7213), (201, 7237),

Gene: Bellis\_9 Start: 6196, Stop: 7356, Start Num: 8

Candidate Starts for Bellis\_9:

(Start: 8 @6196 has 212 MA's), (21, 6274), (25, 6289), (31, 6343), (32, 6349), (41, 6406), (47, 6439), (59, 6496), (65, 6529), (67, 6538), (103, 6664), (127, 6823), (152, 6913), (174, 7021), (179, 7042), (188, 7066), (218, 7234), (220, 7255), (225, 7300),

Gene: Berrie\_7 Start: 6813, Stop: 7757, Start Num: 8

Candidate Starts for Berrie\_7:

(Start: 8 @6813 has 212 MA's), (18, 6864), (31, 6951), (46, 7047), (71, 7164), (94, 7248), (105, 7293), (109, 7314), (125, 7413), (134, 7455), (158, 7551), (165, 7596), (166, 7599), (172, 7620), (179, 7650), (192, 7698), (201, 7731),

Gene: BigCheese\_8 Start: 6070, Stop: 7218, Start Num: 9

Candidate Starts for BigCheese\_8:

(Start: 9 @6070 has 106 MA's), (11, 6085), (25, 6154), (31, 6208), (47, 6304), (63, 6388), (94, 6499), (103, 6529), (105, 6544), (110, 6568), (113, 6583), (125, 6670), (127, 6688), (128, 6694), (152, 6778), (160, 6823), (174, 6886), (179, 6907), (191, 6940), (201, 6976), (211, 7051), (220, 7117), (222, 7144),

Gene: BobsGarage\_8 Start: 6070, Stop: 7218, Start Num: 9

Candidate Starts for BobsGarage\_8:

(Start: 9 @6070 has 106 MA's), (11, 6085), (25, 6154), (31, 6208), (47, 6304), (63, 6388), (94, 6499), (103, 6529), (105, 6544), (110, 6568), (113, 6583), (125, 6670), (127, 6688), (128, 6694), (152, 6778), (160, 6823), (174, 6886), (179, 6907), (191, 6940), (201, 6976), (211, 7051), (220, 7117), (222, 7144),

Gene: Bongo\_18 Start: 9854, Stop: 11017, Start Num: 9

Candidate Starts for Bongo\_18:

(Start: 9 @9854 has 106 MA's), (25, 9938), (40, 10058), (41, 10061), (60, 10157), (63, 10178), (74, 10226), (89, 10271), (98, 10301), (105, 10334), (113, 10373), (128, 10484), (129, 10487), (131, 10493), (144, 10547), (151, 10574), (156, 10601), (160, 10619), (173, 10676), (177, 10694), (181, 10715), (190, 10748), (213, 10877), (220, 10931), (223, 10970),

Gene: BourbonZero\_8 Start: 6202, Stop: 7362, Start Num: 8

Candidate Starts for BourbonZero\_8:

(Start: 8 @6202 has 212 MA's), (21, 6280), (25, 6295), (31, 6349), (32, 6355), (40, 6409), (47, 6445), (59, 6502), (65, 6535), (67, 6544), (103, 6670), (127, 6829), (152, 6919), (174, 7027), (179, 7048), (222, 7288), (225, 7306),

Gene: Bovely\_10 Start: 7257, Stop: 8330, Start Num: 8

Candidate Starts for Bovely\_10:

(Start: 8 @7257 has 212 MA's), (64, 7608), (88, 7704), (101, 7749), (104, 7764), (132, 7932), (154, 8016), (160, 8046), (172, 8100), (189, 8160), (215, 8298),

Gene: Bowden\_11 Start: 7101, Stop: 8159, Start Num: 8

Candidate Starts for Bowden\_11:

(Start: 8 @7101 has 212 MA's), (64, 7431), (83, 7509), (103, 7575), (154, 7839), (173, 7929),

Gene: BrainDrainer\_9 Start: 5889, Stop: 7037, Start Num: 9

Candidate Starts for BrainDrainer\_9:

(Start: 9 @5889 has 106 MA's), (25, 5973), (31, 6027), (32, 6033), (40, 6087), (47, 6123), (51, 6141), (59, 6180), (65, 6213), (103, 6348), (105, 6363), (109, 6384), (111, 6390), (127, 6507), (128, 6513), (152, 6597), (160, 6642), (163, 6657), (167, 6681), (173, 6699), (174, 6705), (178, 6723), (179, 6726), (193, 6765), (194, 6771), (201, 6795), (211, 6870), (220, 6936), (228, 7017),

Gene: Brataylor\_11 Start: 7223, Stop: 8296, Start Num: 8

Candidate Starts for Brataylor\_11:

(Start: 8 @7223 has 212 MA's), (101, 7715), (104, 7730), (154, 7982), (160, 8012), (172, 8066), (189, 8126), (206, 8204),

Gene: Breezona\_8 Start: 6070, Stop: 7218, Start Num: 9

Candidate Starts for Breezona\_8:

(Start: 9 @6070 has 106 MA's), (11, 6085), (25, 6154), (31, 6208), (47, 6304), (63, 6388), (94, 6499), (103, 6529), (105, 6544), (110, 6568), (113, 6583), (125, 6670), (127, 6688), (128, 6694), (152, 6778), (160, 6823), (174, 6886), (179, 6907), (191, 6940), (201, 6976), (211, 7051), (220, 7117), (222, 7144),

Gene: Bricole\_18 Start: 9853, Stop: 11016, Start Num: 9

Candidate Starts for Bricole\_18:

(Start: 9 @9853 has 106 MA's), (25, 9937), (40, 10057), (41, 10060), (60, 10156), (63, 10177), (74, 10225), (89, 10270), (98, 10300), (105, 10333), (113, 10372), (128, 10483), (129, 10486), (131, 10492), (144, 10546), (151, 10573), (156, 10600), (160, 10618), (173, 10675), (177, 10693), (181, 10714), (190, 10747), (213, 10876), (220, 10930), (223, 10969),

Gene: BroPlease\_11 Start: 7315, Stop: 8370, Start Num: 8

Candidate Starts for BroPlease\_11:

(Start: 8 @7315 has 212 MA's), (64, 7645), (70, 7666), (101, 7786), (105, 7804), (141, 7999), (160, 8086), (168, 8128), (173, 8143),

Gene: Bromden\_8 Start: 5799, Stop: 6947, Start Num: 9

Candidate Starts for Bromden\_8:

(Start: 9 @5799 has 106 MA's), (25, 5883), (31, 5937), (32, 5943), (40, 5997), (47, 6033), (51, 6051), (59, 6090), (65, 6123), (77, 6174), (94, 6228), (103, 6258), (105, 6273), (111, 6300), (113, 6312), (125, 6399), (127, 6417), (128, 6423), (152, 6507), (160, 6552), (163, 6567), (167, 6591), (173, 6609), (174, 6615), (179, 6636), (188, 6660), (193, 6675), (201, 6705), (211, 6780), (215, 6801), (220, 6846), (228, 6927),

Gene: BryanRecycles\_11 Start: 7414, Stop: 8487, Start Num: 8

Candidate Starts for BryanRecycles\_11:

(Start: 8 @7414 has 212 MA's), (64, 7765), (88, 7861), (101, 7906), (104, 7921), (132, 8089), (154, 8173), (160, 8203), (172, 8257), (189, 8317),

Gene: Caelum\_11 Start: 6956, Stop: 8014, Start Num: 8

Candidate Starts for Caelum\_11:

(Start: 8 @6956 has 212 MA's), (46, 7196), (51, 7220), (59, 7259), (64, 7286), (101, 7427), (120, 7532), (139, 7634), (141, 7640), (160, 7727), (168, 7769), (179, 7811), (206, 7922), (216, 7991),

Gene: Cafasso\_7 Start: 5963, Stop: 6880, Start Num: 9

Candidate Starts for Cafasso\_7:

(Start: 9 @5963 has 106 MA's), (22, 6035), (35, 6122), (105, 6440), (130, 6593), (134, 6605), (146, 6653), (163, 6731), (169, 6761), (183, 6812),

Gene: Caliburn\_10 Start: 7231, Stop: 8304, Start Num: 8

Candidate Starts for Caliburn\_10:

(Start: 8 @7231 has 212 MA's), (64, 7582), (88, 7678), (101, 7723), (104, 7738), (132, 7906), (154, 7990), (160, 8020), (172, 8074), (189, 8134), (215, 8272),

Gene: Calm\_8 Start: 6085, Stop: 7236, Start Num: 9

Candidate Starts for Calm\_8:

(Start: 9 @6085 has 106 MA's), (11, 6100), (17, 6130), (25, 6169), (31, 6223), (32, 6229), (47, 6319), (59, 6376), (63, 6403), (65, 6409), (105, 6559), (111, 6586), (127, 6703), (140, 6748), (160, 6838), (167, 6877), (173, 6895), (174, 6901), (179, 6922), (201, 6991), (220, 7132), (225, 7177),

Gene: Cappuccino\_7 Start: 6242, Stop: 7168, Start Num: 8

Candidate Starts for Cappuccino\_7:

(Start: 8 @6242 has 212 MA's), (33, 6392), (37, 6407), (47, 6479), (71, 6590), (94, 6674), (101, 6701), (110, 6743), (126, 6848), (129, 6866), (139, 6899), (148, 6932), (173, 7049), (179, 7076), (190, 7112), (201, 7145),

Gene: Caron\_6 Start: 6094, Stop: 7068, Start Num: 8

Candidate Starts for Caron\_6:

(Start: 8 @6094 has 212 MA's), (44, 6319), (51, 6355), (63, 6424), (111, 6613), (125, 6706), (126, 6715), (134, 6748), (138, 6763), (161, 6865), (173, 6916), (186, 6973), (202, 7033),

Gene: Cassia\_7 Start: 6932, Stop: 7879, Start Num: 8

Candidate Starts for Cassia\_7:

(Start: 8 @6932 has 212 MA's), (18, 6983), (31, 7070), (63, 7256), (71, 7283), (94, 7367), (110, 7436), (111, 7439), (134, 7574), (165, 7715), (166, 7718), (172, 7739), (177, 7760), (179, 7769), (193, 7820), (201, 7850),

Gene: Celery\_12 Start: 7316, Stop: 8344, Start Num: 8

Candidate Starts for Celery\_12:

(Start: 8 @7316 has 212 MA's), (18, 7370), (51, 7574), (129, 7949), (167, 8114), (173, 8132), (179, 8159), (195, 8207), (214, 8324),

Gene: Celeste\_10 Start: 7222, Stop: 8295, Start Num: 8

Candidate Starts for Celeste\_10:

(Start: 8 @7222 has 212 MA's), (101, 7714), (104, 7729), (154, 7981), (160, 8011), (172, 8065), (189, 8125), (206, 8203),

Gene: Celia\_10 Start: 7515, Stop: 8588, Start Num: 8

Candidate Starts for Celia\_10:

(1, 7479), (Start: 8 @7515 has 212 MA's), (21, 7593), (64, 7869), (88, 7965), (103, 8013), (111, 8055), (130, 8187), (136, 8211), (141, 8223), (160, 8310), (161, 8316), (173, 8367), (179, 8394), (201, 8463),

Gene: Cen1621\_6 Start: 5215, Stop: 6177, Start Num: 8

Candidate Starts for Cen1621\_6:

(Start: 8 @5215 has 212 MA's), (13, 5248), (38, 5410), (51, 5476), (63, 5545), (105, 5707), (134, 5869), (138, 5884), (140, 5890), (166, 6013), (176, 6049), (202, 6154),

Gene: Chaser\_8 Start: 5804, Stop: 6952, Start Num: 9

Candidate Starts for Chaser\_8:

(Start: 9 @5804 has 106 MA's), (25, 5888), (31, 5942), (32, 5948), (40, 6002), (47, 6038), (51, 6056), (59, 6095), (65, 6128), (94, 6233), (103, 6263), (105, 6278), (109, 6299), (111, 6305), (127, 6422), (128, 6428), (145, 6491), (152, 6512), (160, 6557), (163, 6572), (167, 6596), (173, 6614), (174, 6620), (179, 6641), (188, 6665), (201, 6710), (211, 6785), (220, 6851), (228, 6932),

Gene: Chucky\_10 Start: 7221, Stop: 8294, Start Num: 8

Candidate Starts for Chucky\_10:

(Start: 8 @7221 has 212 MA's), (101, 7713), (104, 7728), (152, 7968), (154, 7980), (160, 8010), (172, 8064), (206, 8202),

Gene: ChutneyChips\_8 Start: 5792, Stop: 6940, Start Num: 9

Candidate Starts for ChutneyChips\_8:

(Start: 9 @5792 has 106 MA's), (25, 5876), (31, 5930), (32, 5936), (40, 5990), (47, 6026), (51, 6044), (59, 6083), (65, 6116), (94, 6221), (103, 6251), (105, 6266), (109, 6287), (111, 6293), (127, 6410), (128, 6416), (152, 6500), (160, 6545), (163, 6560), (167, 6584), (173, 6602), (174, 6608), (179, 6629), (188, 6653), (193, 6668), (194, 6674), (201, 6698), (211, 6773), (220, 6839), (225, 6884), (228, 6920),

Gene: CicholasNage\_8 Start: 6085, Stop: 7236, Start Num: 9

Candidate Starts for CicholasNage\_8:

(Start: 9 @6085 has 106 MA's), (11, 6100), (17, 6130), (25, 6169), (31, 6223), (32, 6229), (47, 6319), (59, 6376), (63, 6403), (65, 6409), (105, 6559), (111, 6586), (127, 6703), (140, 6748), (160, 6838), (167, 6877), (173, 6895), (174, 6901), (179, 6922), (201, 6991), (220, 7132), (225, 7177),

Gene: Claus\_8 Start: 6079, Stop: 7227, Start Num: 9

Candidate Starts for Claus\_8:

(Start: 9 @6079 has 106 MA's), (11, 6094), (17, 6124), (25, 6163), (31, 6217), (47, 6313), (63, 6397), (103, 6538), (105, 6553), (110, 6577), (113, 6592), (125, 6679), (127, 6697), (128, 6703), (152, 6787), (160, 6832), (174, 6895), (179, 6916), (191, 6949), (201, 6985), (220, 7126), (222, 7153),

Gene: Clautastrophe\_9 Start: 6200, Stop: 7360, Start Num: 8

Candidate Starts for Clautastrophe\_9:

(Start: 8 @6200 has 212 MA's), (21, 6278), (25, 6293), (31, 6347), (32, 6353), (41, 6410), (47, 6443), (59, 6500), (65, 6533), (67, 6542), (94, 6638), (103, 6668), (127, 6827), (152, 6917), (174, 7025), (179, 7046), (188, 7070), (218, 7238), (220, 7259), (225, 7304),

Gene: Colossa\_8 Start: 5922, Stop: 6839, Start Num: 9

Candidate Starts for Colossa\_8:

(Start: 9 @5922 has 106 MA's), (12, 5949), (21, 5991), (22, 5994), (25, 6006), (31, 6060), (46, 6147), (48, 6159), (55, 6189), (64, 6240), (70, 6261), (105, 6399), (107, 6408), (124, 6510), (130, 6552), (157, 6660), (163, 6690), (169, 6720), (170, 6723), (183, 6771),

Gene: Community\_8 Start: 7890, Stop: 8834, Start Num: 8

Candidate Starts for Community\_8:

(Start: 8 @7890 has 212 MA's), (18, 7941), (32, 8034), (38, 8082), (46, 8124), (71, 8241), (94, 8325), (105, 8370), (110, 8394), (125, 8490), (139, 8550), (158, 8628), (165, 8673), (168, 8685), (172, 8697), (173, 8700), (179, 8727), (183, 8745), (192, 8775), (194, 8784), (201, 8808),

Gene: Conan\_11 Start: 7067, Stop: 8095, Start Num: 8

Candidate Starts for Conan\_11:

(Start: 8 @7067 has 212 MA's), (18, 7121), (30, 7202), (129, 7700), (154, 7793), (167, 7865), (173, 7883), (179, 7910), (208, 8027), (214, 8075),

Gene: Cosmo\_30 Start: 12978, Stop: 14156, Start Num: 9

Candidate Starts for Cosmo\_30:

(Start: 9 @12978 has 106 MA's), (13, 13008), (18, 13029), (25, 13062), (31, 13116), (32, 13122), (50, 13233), (54, 13251), (58, 13269), (70, 13326), (77, 13359), (111, 13491), (113, 13503), (115, 13518), (122, 13566), (133, 13629), (144, 13677), (151, 13704), (161, 13752), (164, 13764), (179, 13830), (207, 13959), (209, 13965), (211, 13995), (224, 14103), (230, 14151),

Gene: Crewmate\_8 Start: 7269, Stop: 8216, Start Num: 8

Candidate Starts for Crewmate\_8:

(Start: 8 @7269 has 212 MA's), (18, 7320), (32, 7413), (46, 7503), (63, 7593), (71, 7620), (72, 7629), (105, 7749), (109, 7770), (125, 7869), (134, 7911), (139, 7929), (165, 8052), (166, 8055), (172, 8076), (179, 8106), (182, 8121), (201, 8187),

Gene: Crossroads\_8 Start: 6070, Stop: 7218, Start Num: 9

Candidate Starts for Crossroads\_8:

(Start: 9 @6070 has 106 MA's), (11, 6085), (25, 6154), (31, 6208), (47, 6304), (63, 6388), (94, 6499), (103, 6529), (105, 6544), (110, 6568), (113, 6583), (125, 6670), (127, 6688), (128, 6694), (152, 6778), (160, 6823), (174, 6886), (179, 6907), (191, 6940), (201, 6976), (211, 7051), (220, 7117), (222, 7144),

Gene: Cyan\_7 Start: 6821, Stop: 7768, Start Num: 8

Candidate Starts for Cyan\_7:

(Start: 8 @6821 has 212 MA's), (18, 6872), (25, 6905), (32, 6965), (38, 7013), (46, 7055), (71, 7172), (94, 7256), (105, 7301), (109, 7322), (125, 7421), (134, 7463), (139, 7481), (158, 7559), (165, 7604), (168, 7616), (172, 7628), (179, 7658), (182, 7673), (192, 7706), (201, 7739),

Gene: DHan\_8 Start: 6015, Stop: 7163, Start Num: 9

Candidate Starts for DHan\_8:

(Start: 9 @6015 has 106 MA's), (11, 6030), (17, 6060), (25, 6099), (31, 6153), (47, 6249), (63, 6333), (103, 6474), (105, 6489), (110, 6513), (113, 6528), (125, 6615), (127, 6633), (128, 6639), (152, 6723), (160, 6768), (174, 6831), (179, 6852), (191, 6885), (201, 6921), (220, 7062), (222, 7089),

Gene: DanBing\_7 Start: 5913, Stop: 7046, Start Num: 11

Candidate Starts for DanBing\_7:

(Start: 9 @5898 has 106 MA's), (11, 5913), (17, 5943), (25, 5982), (31, 6036), (47, 6132), (63, 6216), (94, 6327), (103, 6357), (105, 6372), (110, 6396), (113, 6411), (125, 6498), (127, 6516), (128, 6522), (152, 6606), (160, 6651), (174, 6714), (179, 6735), (191, 6768), (201, 6804), (220, 6945), (222, 6972),

Gene: Danzina\_11 Start: 7420, Stop: 8499, Start Num: 8

Candidate Starts for Danzina\_11:

(Start: 8 @7420 has 212 MA's), (90, 7879), (101, 7918), (108, 7954), (129, 8092), (154, 8185), (160, 8215), (166, 8248), (172, 8269), (189, 8329), (206, 8407),

Gene: Dattran\_11 Start: 7221, Stop: 8294, Start Num: 8

Candidate Starts for Dattran\_11:

(Start: 8 @7221 has 212 MA's), (101, 7713), (104, 7728), (154, 7980), (160, 8010), (172, 8064), (189, 8124), (206, 8202),

Gene: Daudau\_10 Start: 7029, Stop: 8120, Start Num: 6

Candidate Starts for Daudau\_10:

(Start: 6 @7029 has 1 MA's), (47, 7299), (53, 7329), (64, 7383), (92, 7512), (104, 7566), (154, 7818), (161, 7854), (197, 7986), (201, 8001),

Gene: Dexers\_9 Start: 7060, Stop: 8088, Start Num: 8

Candidate Starts for Dexers\_9:

(Start: 8 @7060 has 212 MA's), (18, 7114), (30, 7195), (129, 7693), (154, 7786), (167, 7858), (173, 7876), (179, 7903), (208, 8020), (214, 8068),

Gene: Diane\_10 Start: 7012, Stop: 8058, Start Num: 8

Candidate Starts for Diane\_10:

(Start: 8 @7012 has 212 MA's), (22, 7087), (59, 7309), (78, 7393), (101, 7477), (104, 7492), (154, 7744), (160, 7774), (172, 7828),

Gene: Diminimus\_19 Start: 9853, Stop: 11016, Start Num: 9

Candidate Starts for Diminimus\_19:

(Start: 9 @9853 has 106 MA's), (25, 9937), (40, 10057), (41, 10060), (60, 10156), (63, 10177), (74, 10225), (89, 10270), (98, 10300), (105, 10333), (113, 10372), (128, 10483), (129, 10486), (131, 10492), (144, 10546), (151, 10573), (156, 10600), (160, 10618), (173, 10675), (177, 10693), (181, 10714), (190, 10747), (213, 10876), (220, 10930), (223, 10969),

Gene: DirkDirk\_8 Start: 6086, Stop: 7237, Start Num: 9

Candidate Starts for DirkDirk\_8:

(Start: 9 @6086 has 106 MA's), (11, 6101), (17, 6131), (25, 6170), (31, 6224), (32, 6230), (47, 6320), (59, 6377), (63, 6404), (65, 6410), (105, 6560), (111, 6587), (127, 6704), (140, 6749), (160, 6839), (167, 6878), (173, 6896), (174, 6902), (179, 6923), (201, 6992), (220, 7133), (225, 7178),

Gene: Donkey\_7 Start: 6242, Stop: 7168, Start Num: 8

Candidate Starts for Donkey\_7:

(Start: 8 @6242 has 212 MA's), (33, 6392), (37, 6407), (47, 6479), (71, 6590), (94, 6674), (101, 6701), (110, 6743), (126, 6848), (129, 6866), (139, 6899), (148, 6932), (173, 7049), (179, 7076), (190, 7112), (201, 7145),

Gene: Douge\_8 Start: 5750, Stop: 6898, Start Num: 9

Candidate Starts for Douge\_8:

(Start: 9 @5750 has 106 MA's), (25, 5834), (31, 5888), (32, 5894), (40, 5948), (47, 5984), (51, 6002), (59, 6041), (65, 6074), (94, 6179), (103, 6209), (105, 6224), (109, 6245), (111, 6251), (127, 6368), (128, 6374), (152, 6458), (160, 6503), (163, 6518), (167, 6542), (173, 6560), (174, 6566), (179, 6587), (188, 6611), (201, 6656), (211, 6731), (220, 6797), (228, 6878),

Gene: Douzhi\_8 Start: 5750, Stop: 6898, Start Num: 9

Candidate Starts for Douzhi\_8:

(Start: 9 @5750 has 106 MA's), (25, 5834), (31, 5888), (32, 5894), (40, 5948), (47, 5984), (51, 6002), (59, 6041), (65, 6074), (103, 6209), (105, 6224), (109, 6245), (111, 6251), (127, 6368), (128, 6374), (152, 6458), (160, 6503), (163, 6518), (167, 6542), (173, 6560), (174, 6566), (178, 6584), (179, 6587), (193, 6626), (194, 6632), (201, 6656), (211, 6731), (220, 6797), (228, 6878),

Gene: DrManhattan\_7 Start: 6829, Stop: 7770, Start Num: 8

Candidate Starts for DrManhattan\_7:

(Start: 8 @6829 has 212 MA's), (18, 6880), (31, 6967), (33, 6979), (41, 7033), (53, 7096), (58, 7117), (70, 7174), (94, 7261), (110, 7330), (139, 7486), (165, 7606), (172, 7630), (173, 7633), (177, 7651), (179, 7660), (182, 7675), (201, 7741),

Gene: DrSeegs\_8 Start: 6070, Stop: 7218, Start Num: 9

Candidate Starts for DrSeegs\_8:

(Start: 9 @6070 has 106 MA's), (11, 6085), (25, 6154), (31, 6208), (47, 6304), (63, 6388), (94, 6499), (103, 6529), (105, 6544), (110, 6568), (113, 6583), (125, 6670), (127, 6688), (128, 6694), (152, 6778), (160, 6823), (174, 6886), (179, 6907), (191, 6940), (201, 6976), (211, 7051), (220, 7117), (222, 7144),

Gene: DrSierra\_7 Start: 6821, Stop: 7768, Start Num: 8

Candidate Starts for DrSierra\_7:

(Start: 8 @6821 has 212 MA's), (17, 6866), (18, 6872), (41, 7028), (71, 7172), (94, 7256), (105, 7301), (109, 7322), (125, 7421), (126, 7430), (139, 7481), (165, 7604), (166, 7607), (172, 7628), (177, 7649), (179, 7658), (182, 7673), (201, 7739),

Gene: Dulcita\_19 Start: 9853, Stop: 11016, Start Num: 9

Candidate Starts for Dulcita\_19:

(Start: 9 @9853 has 106 MA's), (25, 9937), (40, 10057), (41, 10060), (60, 10156), (63, 10177), (74, 10225), (89, 10270), (98, 10300), (105, 10333), (113, 10372), (128, 10483), (129, 10486), (131, 10492), (144, 10546), (151, 10573), (156, 10600), (160, 10618), (173, 10675), (177, 10693), (181, 10714), (190, 10747), (213, 10876), (220, 10930), (223, 10969),

Gene: DuncansLeg\_9 Start: 6204, Stop: 7364, Start Num: 8

Candidate Starts for DuncansLeg\_9:

(Start: 8 @6204 has 212 MA's), (21, 6282), (25, 6297), (31, 6351), (32, 6357), (40, 6411), (47, 6447), (59, 6504), (65, 6537), (67, 6546), (103, 6672), (127, 6831), (152, 6921), (174, 7029), (179, 7050), (222, 7290), (225, 7308),

Gene: Dwayne\_10 Start: 7221, Stop: 8294, Start Num: 8

Candidate Starts for Dwayne\_10:

(Start: 8 @7221 has 212 MA's), (101, 7713), (104, 7728), (152, 7968), (154, 7980), (160, 8010), (172, 8064), (206, 8202),

Gene: DyoEdafos\_9 Start: 5951, Stop: 7108, Start Num: 8

Candidate Starts for DyoEdafos\_9:

(Start: 8 @5951 has 212 MA's), (21, 6029), (25, 6044), (32, 6104), (40, 6158), (47, 6194), (59, 6251), (65, 6284), (70, 6302), (94, 6389), (103, 6419), (105, 6434), (111, 6461), (127, 6578), (128, 6584), (152, 6668), (179, 6797), (201, 6866), (211, 6941), (220, 7007), (225, 7052), (228, 7088),

Gene: ELB20\_09 Start: 7068, Stop: 8135, Start Num: 8

Candidate Starts for ELB20\_09:

(Start: 8 @7068 has 212 MA's), (47, 7329), (64, 7413), (101, 7566), (104, 7581), (110, 7608), (129, 7740), (141, 7779), (172, 7920), (206, 8055),

Gene: Eddasa\_11 Start: 7414, Stop: 8487, Start Num: 8

Candidate Starts for Eddasa\_11:

(Start: 8 @7414 has 212 MA's), (64, 7765), (88, 7861), (101, 7906), (104, 7921), (132, 8089), (154, 8173), (160, 8203), (172, 8257), (189, 8317),

Gene: Ejemplo\_10 Start: 7224, Stop: 8297, Start Num: 8

Candidate Starts for Ejemplo\_10:

(Start: 8 @7224 has 212 MA's), (101, 7716), (104, 7731), (129, 7890), (154, 7983), (160, 8013), (172, 8067), (206, 8205),

Gene: ElGato\_11 Start: 7070, Stop: 8098, Start Num: 8

Candidate Starts for ElGato\_11:

(Start: 8 @7070 has 212 MA's), (18, 7124), (30, 7205), (129, 7703), (154, 7796), (167, 7868), (173, 7886), (179, 7913), (208, 8030), (214, 8078),

Gene: Elezi\_7 Start: 6809, Stop: 7753, Start Num: 8

Candidate Starts for Elezi\_7:

(Start: 8 @6809 has 212 MA's), (18, 6860), (31, 6947), (38, 7001), (46, 7043), (63, 7133), (71, 7160), (94, 7244), (105, 7289), (125, 7409), (134, 7451), (139, 7469), (158, 7547), (165, 7592), (168, 7604), (172, 7616), (173, 7619), (179, 7646), (192, 7694), (194, 7703), (201, 7727),

Gene: Ellson\_9 Start: 6212, Stop: 7372, Start Num: 8

Candidate Starts for Ellson\_9:

(Start: 8 @6212 has 212 MA's), (21, 6290), (25, 6305), (31, 6359), (32, 6365), (41, 6422), (47, 6455), (59, 6512), (65, 6545), (67, 6554), (103, 6680), (127, 6839), (152, 6929), (174, 7037), (179, 7058), (191, 7091), (222, 7298), (225, 7316),

Gene: Emaanora\_12 Start: 7220, Stop: 8293, Start Num: 8

Candidate Starts for Emaanora\_12:

(Start: 8 @7220 has 212 MA's), (101, 7712), (104, 7727), (152, 7967), (154, 7979), (160, 8009), (172, 8063), (206, 8201),

Gene: EmiRose\_6 Start: 5829, Stop: 6923, Start Num: 8

Candidate Starts for EmiRose\_6:

(Start: 8 @5829 has 212 MA's), (24, 5916), (39, 6057), (42, 6084), (46, 6114), (56, 6174), (62, 6210), (69, 6246), (75, 6327), (85, 6369), (93, 6423), (111, 6498), (129, 6621), (134, 6636), (158, 6732), (161, 6753), (167, 6786), (172, 6801), (187, 6849), (194, 6873),

Gene: Emotion\_6 Start: 5160, Stop: 6125, Start Num: 8

Candidate Starts for Emotion\_6:

(Start: 8 @5160 has 212 MA's), (42, 5370), (53, 5433), (58, 5454), (71, 5514), (80, 5556), (105, 5664), (109, 5685), (125, 5784), (128, 5808), (142, 5865), (152, 5892), (177, 6012),

Gene: Enceladus\_8 Start: 6086, Stop: 7237, Start Num: 9

Candidate Starts for Enceladus\_8:

(Start: 9 @6086 has 106 MA's), (11, 6101), (17, 6131), (25, 6170), (31, 6224), (32, 6230), (47, 6320), (59, 6377), (63, 6404), (65, 6410), (105, 6560), (111, 6587), (127, 6704), (140, 6749), (160, 6839), (167, 6878), (173, 6896), (174, 6902), (179, 6923), (201, 6992), (220, 7133), (225, 7178),

Gene: EniyanLRS\_27 Start: 12672, Stop: 13850, Start Num: 9

Candidate Starts for EniyanLRS\_27:

(Start: 9 @12672 has 106 MA's), (13, 12702), (18, 12723), (20, 12738), (25, 12756), (26, 12762), (31, 12810), (32, 12816), (50, 12927), (54, 12945), (58, 12963), (70, 13020), (77, 13053), (111, 13185), (113, 13197), (115, 13212), (122, 13260), (133, 13323), (144, 13371), (151, 13398), (161, 13446), (164, 13458), (179, 13524), (207, 13653), (209, 13659), (211, 13689), (224, 13797), (230, 13845),

Gene: EnochSoames\_11 Start: 7410, Stop: 8483, Start Num: 8

Candidate Starts for EnochSoames\_11:

(Start: 8 @7410 has 212 MA's), (64, 7761), (88, 7857), (101, 7902), (104, 7917), (132, 8085), (154, 8169), (160, 8199), (172, 8253), (189, 8313), (206, 8391),

Gene: Eraser\_7 Start: 6809, Stop: 7753, Start Num: 8

Candidate Starts for Eraser\_7:

(Start: 8 @6809 has 212 MA's), (18, 6860), (31, 6947), (32, 6953), (38, 7001), (41, 7016), (46, 7043), (94, 7244), (125, 7409), (139, 7469), (158, 7547), (165, 7592), (168, 7604), (172, 7616), (173, 7619), (179, 7646), (192, 7694), (194, 7703), (201, 7727),

Gene: Esperer\_10 Start: 7251, Stop: 8324, Start Num: 8

Candidate Starts for Esperer\_10:

(Start: 8 @7251 has 212 MA's), (64, 7602), (88, 7698), (101, 7743), (104, 7758), (132, 7926), (154, 8010), (160, 8040), (172, 8094), (189, 8154), (215, 8292),

Gene: Estes\_23 Start: 10552, Stop: 11718, Start Num: 9

Candidate Starts for Estes\_23:

(Start: 9 @10552 has 106 MA's), (25, 10636), (40, 10756), (41, 10759), (50, 10807), (60, 10855), (67, 10891), (70, 10900), (74, 10924), (86, 10960), (97, 10996), (108, 11050), (118, 11104), (128, 11182), (129, 11185), (144, 11245), (151, 11272), (156, 11299), (160, 11317), (173, 11374), (177, 11392), (181, 11413), (190, 11446), (213, 11581), (217, 11611),

Gene: Exile\_7 Start: 6843, Stop: 7796, Start Num: 8

Candidate Starts for Exile\_7:

(Start: 8 @6843 has 212 MA's), (16, 6888), (31, 6987), (36, 7011), (41, 7053), (42, 7056), (92, 7269), (105, 7326), (109, 7347), (128, 7470), (154, 7566), (172, 7653), (179, 7683), (182, 7698), (192, 7731), (201, 7764),

Gene: Faith1\_8 Start: 6070, Stop: 7218, Start Num: 9

Candidate Starts for Faith1\_8:

(Start: 9 @6070 has 106 MA's), (11, 6085), (25, 6154), (31, 6208), (47, 6304), (63, 6388), (94, 6499), (103, 6529), (105, 6544), (110, 6568), (113, 6583), (125, 6670), (127, 6688), (128, 6694), (152, 6778), (160, 6823), (174, 6886), (179, 6907), (191, 6940), (201, 6976), (211, 7051), (220, 7117), (222, 7144),

Gene: FarmResident\_8 Start: 5795, Stop: 6943, Start Num: 9

Candidate Starts for FarmResident\_8:

(Start: 9 @5795 has 106 MA's), (25, 5879), (32, 5939), (40, 5993), (47, 6029), (51, 6047), (59, 6086), (65, 6119), (94, 6224), (103, 6254), (105, 6269), (109, 6290), (111, 6296), (127, 6413), (128, 6419), (152, 6503), (160, 6548), (163, 6563), (167, 6587), (173, 6605), (174, 6611), (179, 6632), (188, 6656), (201, 6701), (211, 6776), (220, 6842), (228, 6923),

Gene: Finemlucis\_8 Start: 6070, Stop: 7218, Start Num: 9

Candidate Starts for Finemlucis\_8:

(Start: 9 @6070 has 106 MA's), (11, 6085), (25, 6154), (31, 6208), (47, 6304), (63, 6388), (94, 6499), (103, 6529), (105, 6544), (110, 6568), (113, 6583), (125, 6670), (127, 6688), (128, 6694), (152, 6778), (160, 6823), (174, 6886), (179, 6907), (191, 6940), (201, 6976), (211, 7051), (220, 7117), (222, 7144),

Gene: Finnry\_9 Start: 6197, Stop: 7357, Start Num: 8

Candidate Starts for Finnry\_9:

(Start: 8 @6197 has 212 MA's), (21, 6275), (25, 6290), (31, 6344), (32, 6350), (41, 6407), (47, 6440), (59, 6497), (65, 6530), (67, 6539), (103, 6665), (127, 6824), (152, 6914), (174, 7022), (179, 7043), (188, 7067), (218, 7235), (220, 7256), (225, 7301),

Gene: FiveHead\_6 Start: 5146, Stop: 6090, Start Num: 8

Candidate Starts for FiveHead\_6:

(Start: 8 @5146 has 212 MA's), (18, 5197), (25, 5230), (58, 5437), (70, 5494), (109, 5647), (126, 5755), (134, 5788), (139, 5806), (152, 5854), (165, 5926), (172, 5950), (177, 5971), (201, 6061),

Gene: Floof\_6 Start: 5563, Stop: 6561, Start Num: 2

Candidate Starts for Floof\_6:

(Start: 2 @5563 has 1 MA's), (44, 5809), (51, 5845), (61, 5902), (63, 5914), (125, 6205), (134, 6247), (146, 6295), (163, 6373), (168, 6400), (190, 6484), (202, 6532),

Gene: Flutur\_7 Start: 6820, Stop: 7767, Start Num: 8

Candidate Starts for Flutur\_7:

(Start: 8 @6820 has 212 MA's), (18, 6871), (25, 6904), (46, 7054), (71, 7171), (105, 7300), (109, 7321), (125, 7420), (126, 7429), (139, 7480), (158, 7558), (165, 7603), (166, 7606), (172, 7627), (177, 7648), (179, 7657), (182, 7672), (201, 7738),

Gene: Footloose\_6 Start: 4869, Stop: 5759, Start Num: 8

Candidate Starts for Footloose\_6:

(Start: 8 @4869 has 212 MA's), (44, 5130), (52, 5184), (62, 5220), (73, 5256), (96, 5322), (101, 5343), (139, 5541), (158, 5619),

Gene: Forester\_7 Start: 7166, Stop: 8143, Start Num: 5

Candidate Starts for Forester\_7:

(Start: 5 @7166 has 7 MA's), (25, 7265), (44, 7403), (51, 7439), (61, 7496), (63, 7508), (86, 7595), (125, 7787), (129, 7814), (146, 7877), (163, 7955), (168, 7982), (176, 8009), (184, 8045), (186, 8054), (202, 8114),

Gene: FreakyGoo\_19 Start: 9854, Stop: 11017, Start Num: 9

Candidate Starts for FreakyGoo\_19:

(Start: 9 @9854 has 106 MA's), (25, 9938), (40, 10058), (41, 10061), (60, 10157), (63, 10178), (74, 10226), (89, 10271), (98, 10301), (105, 10334), (113, 10373), (128, 10484), (129, 10487), (131, 10493), (144, 10547), (151, 10574), (156, 10601), (160, 10619), (173, 10676), (177, 10694), (181, 10715), (190, 10748), (213, 10877), (220, 10931), (223, 10970),

Gene: Gabriela\_8 Start: 6070, Stop: 7218, Start Num: 9

Candidate Starts for Gabriela\_8:

(Start: 9 @6070 has 106 MA's), (11, 6085), (25, 6154), (31, 6208), (47, 6304), (63, 6388), (94, 6499), (103, 6529), (105, 6544), (110, 6568), (113, 6583), (125, 6670), (127, 6688), (128, 6694), (152, 6778), (160, 6823), (174, 6886), (179, 6907), (191, 6940), (201, 6976), (211, 7051), (220, 7117), (222, 7144),

Gene: Galactica\_7 Start: 5830, Stop: 6765, Start Num: 9

Candidate Starts for Galactica\_7:

(Start: 9 @5830 has 106 MA's), (22, 5902), (42, 6022), (52, 6076), (55, 6088), (67, 6151), (81, 6208), (101, 6310), (110, 6352), (126, 6460), (169, 6646), (179, 6685),

Gene: Gambol\_7 Start: 6242, Stop: 7168, Start Num: 8

Candidate Starts for Gambol\_7:

(Start: 8 @6242 has 212 MA's), (33, 6392), (37, 6407), (47, 6479), (71, 6590), (94, 6674), (101, 6701), (110, 6743), (126, 6848), (129, 6866), (139, 6899), (148, 6932), (173, 7049), (179, 7076), (190, 7112), (201, 7145),

Gene: Gardann\_8 Start: 6070, Stop: 7218, Start Num: 9

Candidate Starts for Gardann\_8:

(Start: 9 @6070 has 106 MA's), (11, 6085), (25, 6154), (31, 6208), (47, 6304), (63, 6388), (94, 6499), (103, 6529), (105, 6544), (110, 6568), (113, 6583), (125, 6670), (127, 6688), (128, 6694), (152, 6778), (160, 6823), (174, 6886), (179, 6907), (191, 6940), (201, 6976), (211, 7051), (220, 7117), (222, 7144),

Gene: GardenSalsa\_22 Start: 10388, Stop: 11554, Start Num: 9

Candidate Starts for GardenSalsa\_22:

(Start: 9 @10388 has 106 MA's), (25, 10472), (28, 10496), (33, 10538), (40, 10592), (50, 10643), (60, 10691), (67, 10727), (70, 10736), (74, 10760), (86, 10796), (97, 10832), (108, 10886), (118, 10940), (128, 11018), (129, 11021), (144, 11081), (151, 11108), (156, 11135), (160, 11153), (173, 11210), (177, 11228), (181, 11249), (190, 11282), (213, 11417), (217, 11447), (219, 11468), (221, 11480),

Gene: GardenState\_7 Start: 6286, Stop: 7260, Start Num: 5

Candidate Starts for GardenState\_7:

(Start: 5 @6286 has 7 MA's), (42, 6511), (51, 6559), (63, 6628), (74, 6676), (105, 6790), (126, 6919), (134, 6952), (135, 6961), (142, 6991), (146, 7000), (161, 7069), (173, 7120), (189, 7186), (198, 7219), (202, 7237),

Gene: GenevaB15\_22 Start: 10415, Stop: 11581, Start Num: 9

Candidate Starts for GenevaB15\_22:

(Start: 9 @10415 has 106 MA's), (25, 10499), (28, 10523), (33, 10565), (40, 10619), (50, 10670), (60, 10718), (67, 10754), (70, 10763), (74, 10787), (86, 10823), (97, 10859), (108, 10913), (118, 10967), (128, 11045), (129, 11048), (144, 11108), (151, 11135), (156, 11162), (160, 11180), (173, 11237), (177, 11255), (181, 11276), (190, 11309), (213, 11444), (217, 11474), (219, 11495), (221, 11507),

Gene: Giorgio\_7 Start: 6335, Stop: 7261, Start Num: 8

Candidate Starts for Giorgio\_7:

(Start: 8 @6335 has 212 MA's), (33, 6485), (37, 6500), (47, 6572), (71, 6683), (94, 6767), (101, 6794), (110, 6836), (129, 6959), (139, 6992), (148, 7025), (173, 7142), (179, 7169), (194, 7214), (201, 7238),

Gene: GirlDinner\_10 Start: 7086, Stop: 8132, Start Num: 8

Candidate Starts for GirlDinner\_10:

(Start: 8 @7086 has 212 MA's), (59, 7383), (64, 7410), (101, 7551), (104, 7566), (129, 7725), (154, 7818), (172, 7902), (179, 7932), (206, 8040),

Gene: Glaske16\_19 Start: 9853, Stop: 11016, Start Num: 9

Candidate Starts for Glaske16\_19:

(Start: 9 @9853 has 106 MA's), (25, 9937), (40, 10057), (41, 10060), (60, 10156), (63, 10177), (74, 10225), (89, 10270), (98, 10300), (105, 10333), (113, 10372), (128, 10483), (129, 10486), (131, 10492), (144, 10546), (151, 10573), (156, 10600), (160, 10618), (173, 10675), (177, 10693), (181, 10714), (190, 10747), (213, 10876), (220, 10930), (223, 10969),

Gene: Goby\_10 Start: 7221, Stop: 8297, Start Num: 8

Candidate Starts for Goby\_10:

(Start: 8 @7221 has 212 MA's), (101, 7719), (108, 7755), (129, 7893), (141, 7932), (160, 8016), (161, 8022), (179, 8100), (206, 8205),

Gene: Godpower\_11 Start: 7218, Stop: 8306, Start Num: 8

Candidate Starts for Godpower\_11:

(Start: 8 @7218 has 212 MA's), (101, 7737), (104, 7752), (129, 7911), (154, 8004), (160, 8034), (172, 8088), (189, 8148),

Gene: GreenWeasel\_12 Start: 7324, Stop: 8379, Start Num: 8

Candidate Starts for GreenWeasel\_12:

(Start: 8 @7324 has 212 MA's), (64, 7654), (70, 7675), (101, 7795), (105, 7813), (141, 8008), (160, 8095), (168, 8137), (173, 8152),

Gene: Gretchen\_7 Start: 7160, Stop: 8137, Start Num: 5

Candidate Starts for Gretchen\_7:

(Start: 5 @7160 has 7 MA's), (25, 7259), (44, 7397), (51, 7433), (61, 7490), (63, 7502), (86, 7589), (125, 7781), (129, 7808), (146, 7871), (163, 7949), (168, 7976), (176, 8003), (184, 8039), (186, 8048), (202, 8108),

Gene: Gumpizza\_7 Start: 6334, Stop: 7260, Start Num: 8

Candidate Starts for Gumpizza\_7:

(Start: 8 @6334 has 212 MA's), (33, 6484), (37, 6499), (47, 6571), (71, 6682), (94, 6766), (101, 6793), (110, 6835), (129, 6958), (139, 6991), (148, 7024), (173, 7141), (179, 7168), (194, 7213), (201, 7237),

Gene: GuuelaD\_8 Start: 6104, Stop: 7252, Start Num: 9

Candidate Starts for GuuelaD\_8:

(Start: 9 @6104 has 106 MA's), (11, 6119), (17, 6149), (25, 6188), (31, 6242), (47, 6338), (63, 6422), (94, 6533), (103, 6563), (105, 6578), (110, 6602), (113, 6617), (125, 6704), (127, 6722), (128, 6728), (152, 6812), (160, 6857), (174, 6920), (179, 6941), (188, 6965), (191, 6974), (201, 7010), (211, 7085), (220, 7151), (222, 7178),

Gene: Hafay\_8 Start: 6103, Stop: 7251, Start Num: 9

Candidate Starts for Hafay\_8:

(Start: 9 @6103 has 106 MA's), (11, 6118), (25, 6187), (31, 6241), (47, 6337), (63, 6421), (94, 6532), (103, 6562), (105, 6577), (110, 6601), (113, 6616), (125, 6703), (127, 6721), (128, 6727), (152, 6811), (160, 6856), (174, 6919), (179, 6940), (191, 6973), (201, 7009), (211, 7084), (220, 7150), (222, 7177),

Gene: Haizum\_10 Start: 7041, Stop: 8087, Start Num: 8

Candidate Starts for Haizum\_10:

(Start: 8 @7041 has 212 MA's), (22, 7116), (59, 7338), (78, 7422), (101, 7506), (104, 7521), (154, 7773), (160, 7803), (172, 7857), (179, 7887),

Gene: Halena\_8 Start: 6085, Stop: 7236, Start Num: 9

Candidate Starts for Halena\_8:

(Start: 9 @6085 has 106 MA's), (11, 6100), (17, 6130), (25, 6169), (31, 6223), (32, 6229), (47, 6319), (59, 6376), (63, 6403), (65, 6409), (105, 6559), (111, 6586), (127, 6703), (140, 6748), (160, 6838), (167, 6877), (173, 6895), (174, 6901), (179, 6922), (201, 6991), (220, 7132), (225, 7177),

Gene: Halsey\_7 Start: 6333, Stop: 7259, Start Num: 8

Candidate Starts for Halsey\_7:

(Start: 8 @6333 has 212 MA's), (33, 6483), (37, 6498), (47, 6570), (71, 6681), (94, 6765), (101, 6792), (110, 6834), (129, 6957), (139, 6990), (148, 7023), (173, 7140), (179, 7167), (194, 7212), (201, 7236),

Gene: Hank144\_11 Start: 7359, Stop: 8426, Start Num: 8

Candidate Starts for Hank144\_11:

(Start: 8 @7359 has 212 MA's), (22, 7431), (47, 7620), (64, 7704), (101, 7845), (104, 7860), (110, 7887), (132, 8028), (172, 8199), (206, 8334),

Gene: Hippo\_10 Start: 7220, Stop: 8293, Start Num: 8

Candidate Starts for Hippo\_10:

(Start: 8 @7220 has 212 MA's), (101, 7712), (104, 7727), (152, 7967), (154, 7979), (160, 8009), (172, 8063), (206, 8201),

Gene: Hiyaa\_7 Start: 5800, Stop: 6735, Start Num: 9

Candidate Starts for Hiyaa\_7:

(Start: 9 @5800 has 106 MA's), (22, 5872), (52, 6046), (67, 6121), (79, 6169), (81, 6178), (85, 6196), (101, 6280), (105, 6298), (126, 6430), (130, 6451), (169, 6616),

Gene: Honk\_6 Start: 5188, Stop: 6153, Start Num: 5

Candidate Starts for Honk\_6:

(Start: 5 @5188 has 7 MA's), (51, 5461), (61, 5518), (80, 5599), (126, 5821), (158, 5950), (176, 6034), (189, 6088), (192, 6097), (202, 6139),

Gene: Hydra\_12 Start: 7788, Stop: 8852, Start Num: 8

Candidate Starts for Hydra\_12:

(Start: 8 @7788 has 212 MA's), (64, 8133), (101, 8274), (104, 8289), (132, 8457), (141, 8487), (154, 8541), (160, 8571), (172, 8625), (206, 8760),

Gene: IAmGroot\_7 Start: 6930, Stop: 7904, Start Num: 5

Candidate Starts for IAmGroot\_7:

(Start: 5 @6930 has 7 MA's), (42, 7155), (51, 7203), (63, 7272), (74, 7320), (105, 7434), (126, 7563), (134, 7596), (135, 7605), (142, 7635), (146, 7644), (161, 7713), (173, 7764), (189, 7830), (198, 7863), (202, 7881),

Gene: IPhane7\_18 Start: 9854, Stop: 11017, Start Num: 9

Candidate Starts for IPhane7\_18:

(Start: 9 @9854 has 106 MA's), (25, 9938), (40, 10058), (41, 10061), (60, 10157), (63, 10178), (74, 10226), (89, 10271), (98, 10301), (105, 10334), (113, 10373), (128, 10484), (129, 10487), (131, 10493), (144, 10547), (151, 10574), (156, 10601), (160, 10619), (173, 10676), (177, 10694), (181, 10715), (190, 10748), (213, 10877), (220, 10931), (223, 10970),

Gene: IUFootball\_6 Start: 5287, Stop: 6255, Start Num: 8

Candidate Starts for IUFootball\_6:

(Start: 8 @5287 has 212 MA's), (25, 5371), (29, 5398), (41, 5494), (42, 5497), (53, 5560), (58, 5581), (105, 5791), (109, 5812), (129, 5938), (142, 5992), (152, 6019), (157, 6046), (173, 6121), (177, 6139), (190, 6190),

Gene: Indigo\_10 Start: 7251, Stop: 8324, Start Num: 8

Candidate Starts for Indigo\_10:

(Start: 8 @7251 has 212 MA's), (64, 7602), (88, 7698), (101, 7743), (104, 7758), (132, 7926), (154, 8010), (160, 8040), (172, 8094), (189, 8154), (215, 8292),

Gene: Issmi\_11 Start: 7309, Stop: 8367, Start Num: 8

Candidate Starts for Issmi\_11:

(Start: 8 @7309 has 212 MA's), (10, 7330), (64, 7639), (101, 7780), (120, 7885), (139, 7987), (141, 7993), (154, 8047), (160, 8080), (173, 8137), (179, 8164), (201, 8236), (206, 8275),

Gene: Iter\_7 Start: 6834, Stop: 7778, Start Num: 8

Candidate Starts for Iter\_7:

(Start: 8 @6834 has 212 MA's), (18, 6885), (31, 6972), (38, 7026), (46, 7068), (71, 7185), (72, 7194), (94, 7269), (125, 7434), (134, 7476), (139, 7494), (158, 7572), (165, 7617), (168, 7629), (172, 7641), (177, 7662), (179, 7671), (182, 7686), (201, 7752),

Gene: Itos\_8 Start: 6070, Stop: 7218, Start Num: 9

Candidate Starts for Itos\_8:

(Start: 9 @6070 has 106 MA's), (11, 6085), (25, 6154), (31, 6208), (47, 6304), (63, 6388), (94, 6499), (103, 6529), (105, 6544), (110, 6568), (113, 6583), (125, 6670), (127, 6688), (128, 6694), (152, 6778), (160, 6823), (174, 6886), (179, 6907), (191, 6940), (201, 6976), (211, 7051), (220, 7117), (222, 7144),

Gene: IttyBittyPiggy\_7 Start: 6819, Stop: 7766, Start Num: 8

Candidate Starts for IttyBittyPiggy\_7:

(Start: 8 @6819 has 212 MA's), (18, 6870), (38, 7011), (46, 7053), (53, 7089), (71, 7170), (72, 7179), (80, 7212), (105, 7299), (110, 7323), (134, 7461), (166, 7605), (172, 7626), (179, 7656), (182, 7671), (201, 7737),

Gene: Itza\_10 Start: 7438, Stop: 8511, Start Num: 8

Candidate Starts for Itza\_10:

(1, 7402), (Start: 8 @7438 has 212 MA's), (21, 7516), (64, 7792), (88, 7888), (103, 7936), (111, 7978), (130, 8110), (136, 8134), (141, 8146), (160, 8233), (161, 8239), (173, 8290), (179, 8317), (201, 8386),

Gene: Izel\_19 Start: 9853, Stop: 11016, Start Num: 9

Candidate Starts for Izel\_19:

(Start: 9 @9853 has 106 MA's), (25, 9937), (40, 10057), (41, 10060), (60, 10156), (63, 10177), (74, 10225), (89, 10270), (98, 10300), (105, 10333), (113, 10372), (128, 10483), (129, 10486), (131, 10492), (144, 10546), (151, 10573), (156, 10600), (160, 10618), (173, 10675), (177, 10693), (181, 10714), (190, 10747), (213, 10876), (220, 10930), (223, 10969),

Gene: Izzy\_11 Start: 7461, Stop: 8534, Start Num: 8

Candidate Starts for Izzy\_11:

(Start: 8 @7461 has 212 MA's), (64, 7812), (88, 7908), (101, 7953), (104, 7968), (132, 8136), (154, 8220), (160, 8250), (172, 8304), (189, 8364),

Gene: Janeemi\_8 Start: 7920, Stop: 8864, Start Num: 8

Candidate Starts for Janeemi\_8:

(Start: 8 @7920 has 212 MA's), (32, 8064), (46, 8154), (71, 8271), (94, 8355), (105, 8400), (110, 8424), (125, 8520), (134, 8562), (158, 8658), (166, 8706), (172, 8727), (179, 8757), (192, 8805), (201, 8838),

Gene: Janus\_11 Start: 7423, Stop: 8469, Start Num: 8

Candidate Starts for Janus\_11:

(Start: 8 @7423 has 212 MA's), (59, 7720), (64, 7747), (101, 7888), (104, 7903), (129, 8062), (154, 8155), (172, 8239), (206, 8377),

Gene: Jash\_11 Start: 7414, Stop: 8487, Start Num: 8

Candidate Starts for Jash\_11:

(Start: 8 @7414 has 212 MA's), (64, 7765), (88, 7861), (101, 7906), (104, 7921), (132, 8089), (154, 8173), (160, 8203), (172, 8257), (189, 8317),

Gene: JasmineDragon\_6 Start: 5155, Stop: 6096, Start Num: 8

Candidate Starts for JasmineDragon\_6:

(Start: 8 @5155 has 212 MA's), (18, 5206), (38, 5347), (46, 5389), (58, 5446), (63, 5479), (70, 5503), (74, 5527), (109, 5656), (126, 5764), (134, 5797), (148, 5848), (152, 5863), (165, 5935), (172, 5959), (177, 5980), (192, 6037), (201, 6070),

Gene: Jevington\_12 Start: 7599, Stop: 8669, Start Num: 8

Candidate Starts for Jevington\_12:

(Start: 8 @7599 has 212 MA's), (64, 7929), (101, 8082), (139, 8289), (141, 8295), (168, 8424), (172, 8436), (204, 8571), (206, 8577),

Gene: Jhitchelle\_9 Start: 6997, Stop: 8025, Start Num: 8

Candidate Starts for Jhitchelle\_9:

(Start: 8 @6997 has 212 MA's), (18, 7051), (55, 7273), (129, 7630), (154, 7723), (167, 7795), (173, 7813), (179, 7840), (201, 7909), (214, 8005),

Gene: Jobypre\_9 Start: 6200, Stop: 7360, Start Num: 8

Candidate Starts for Jobypre\_9:

(Start: 8 @6200 has 212 MA's), (21, 6278), (25, 6293), (31, 6347), (32, 6353), (41, 6410), (47, 6443), (59, 6500), (65, 6533), (67, 6542), (94, 6638), (103, 6668), (127, 6827), (152, 6917), (174, 7025), (179, 7046), (188, 7070), (218, 7238), (220, 7259), (225, 7304),

Gene: JoeDirt\_8 Start: 6085, Stop: 7236, Start Num: 9

Candidate Starts for JoeDirt\_8:

(Start: 9 @6085 has 106 MA's), (11, 6100), (17, 6130), (25, 6169), (31, 6223), (32, 6229), (47, 6319), (59, 6376), (63, 6403), (65, 6409), (105, 6559), (111, 6586), (127, 6703), (140, 6748), (160, 6838), (167, 6877), (173, 6895), (174, 6901), (179, 6922), (201, 6991), (220, 7132), (225, 7177),

Gene: Joemato\_7 Start: 6821, Stop: 7768, Start Num: 8

Candidate Starts for Joemato\_7:

(Start: 8 @6821 has 212 MA's), (18, 6872), (25, 6905), (32, 6965), (38, 7013), (46, 7055), (71, 7172), (94, 7256), (105, 7301), (109, 7322), (125, 7421), (134, 7463), (152, 7529), (158, 7559), (165, 7604), (168, 7616), (173, 7631), (179, 7658), (192, 7706), (201, 7739),

Gene: JohnDoe\_7 Start: 6819, Stop: 7766, Start Num: 8

Candidate Starts for JohnDoe\_7:

(Start: 8 @6819 has 212 MA's), (18, 6870), (25, 6903), (32, 6963), (38, 7011), (46, 7053), (71, 7170), (94, 7254), (105, 7299), (109, 7320), (125, 7419), (134, 7461), (139, 7479), (158, 7557), (165, 7602), (168, 7614), (172, 7626), (179, 7656), (182, 7671), (192, 7704), (201, 7737),

Gene: JohnThicc\_6 Start: 5146, Stop: 6090, Start Num: 8

Candidate Starts for JohnThicc\_6:

(Start: 8 @5146 has 212 MA's), (18, 5197), (25, 5230), (58, 5437), (70, 5494), (109, 5647), (126, 5755), (134, 5788), (139, 5806), (152, 5854), (165, 5926), (172, 5950), (177, 5971), (201, 6061),

Gene: Jstan\_7 Start: 6809, Stop: 7753, Start Num: 8

Candidate Starts for Jstan\_7:

(Start: 8 @6809 has 212 MA's), (18, 6860), (31, 6947), (32, 6953), (38, 7001), (41, 7016), (46, 7043), (94, 7244), (125, 7409), (139, 7469), (158, 7547), (165, 7592), (168, 7604), (172, 7616), (173, 7619), (179, 7646), (192, 7694), (194, 7703), (201, 7727),

Gene: Jubie\_9 Start: 6200, Stop: 7360, Start Num: 8

Candidate Starts for Jubie\_9:

(Start: 8 @6200 has 212 MA's), (21, 6278), (25, 6293), (31, 6347), (32, 6353), (41, 6410), (47, 6443), (59, 6500), (65, 6533), (67, 6542), (94, 6638), (103, 6668), (127, 6827), (152, 6917), (174, 7025), (179, 7046), (188, 7070), (218, 7238), (220, 7259), (225, 7304),

Gene: JuneStar\_7 Start: 6936, Stop: 7883, Start Num: 8

Candidate Starts for JuneStar\_7:

(Start: 8 @6936 has 212 MA's), (18, 6987), (46, 7170), (72, 7296), (105, 7416), (110, 7440), (111, 7443), (134, 7578), (139, 7596), (165, 7719), (166, 7722), (172, 7743), (179, 7773), (182, 7788), (201, 7854),

Gene: Kahlid\_8 Start: 6070, Stop: 7218, Start Num: 9

Candidate Starts for Kahlid\_8:

(Start: 9 @6070 has 106 MA's), (11, 6085), (25, 6154), (31, 6208), (47, 6304), (63, 6388), (94, 6499), (103, 6529), (105, 6544), (110, 6568), (113, 6583), (125, 6670), (127, 6688), (128, 6694), (152, 6778), (160, 6823), (174, 6886), (179, 6907), (191, 6940), (201, 6976), (211, 7051), (220, 7117), (222, 7144),

Gene: Kaine\_10 Start: 7060, Stop: 8088, Start Num: 8

Candidate Starts for Kaine\_10:

(Start: 8 @7060 has 212 MA's), (18, 7114), (30, 7195), (129, 7693), (154, 7786), (167, 7858), (173, 7876), (179, 7903), (208, 8020), (214, 8068),

Gene: Kalimba\_7 Start: 6242, Stop: 7168, Start Num: 8

Candidate Starts for Kalimba\_7:

(Start: 8 @6242 has 212 MA's), (33, 6392), (37, 6407), (47, 6479), (71, 6590), (94, 6674), (101, 6701), (110, 6743), (126, 6848), (129, 6866), (139, 6899), (148, 6932), (173, 7049), (179, 7076), (190, 7112), (201, 7145),

Gene: Katalie\_11 Start: 7494, Stop: 8567, Start Num: 8

Candidate Starts for Katalie\_11:

(Start: 8 @7494 has 212 MA's), (101, 7986), (108, 8022), (129, 8160), (141, 8199), (160, 8283), (172, 8337), (206, 8475),

Gene: Kaylissa\_7 Start: 6821, Stop: 7768, Start Num: 8

Candidate Starts for Kaylissa\_7:

(Start: 8 @6821 has 212 MA's), (18, 6872), (25, 6905), (32, 6965), (38, 7013), (46, 7055), (71, 7172), (94, 7256), (105, 7301), (109, 7322), (125, 7421), (134, 7463), (152, 7529), (158, 7559), (165, 7604), (168, 7616), (173, 7631), (179, 7658), (192, 7706), (201, 7739),

Gene: KeAlii\_7 Start: 6837, Stop: 7790, Start Num: 8

Candidate Starts for KeAlii\_7:

(Start: 8 @6837 has 212 MA's), (41, 7050), (42, 7053), (46, 7077), (53, 7113), (58, 7134), (70, 7191), (94, 7287), (105, 7332), (110, 7356), (129, 7479), (134, 7494), (157, 7587), (165, 7635), (172, 7659), (180, 7695), (198, 7755),

Gene: Keanu\_7 Start: 5860, Stop: 6795, Start Num: 9

Candidate Starts for Keanu\_7:

(Start: 9 @5860 has 106 MA's), (22, 5932), (42, 6052), (67, 6181), (79, 6229), (81, 6238), (101, 6340), (110, 6382), (149, 6571), (169, 6676), (179, 6715),

Gene: Kingsolomon\_9 Start: 6200, Stop: 7360, Start Num: 8

Candidate Starts for Kingsolomon\_9:

(Start: 8 @6200 has 212 MA's), (21, 6278), (25, 6293), (31, 6347), (32, 6353), (41, 6410), (47, 6443), (59, 6500), (65, 6533), (67, 6542), (94, 6638), (103, 6668), (127, 6827), (152, 6917), (174, 7025), (179, 7046), (188, 7070), (218, 7238), (220, 7259), (225, 7304),

Gene: KirDoubleO7\_7 Start: 6213, Stop: 7373, Start Num: 8

Candidate Starts for KirDoubleO7\_7:

(Start: 8 @6213 has 212 MA's), (21, 6291), (25, 6306), (31, 6360), (32, 6366), (40, 6420), (47, 6456), (59, 6513), (65, 6546), (67, 6555), (103, 6681), (127, 6840), (152, 6930), (174, 7038), (179, 7059), (222, 7299), (225, 7317),

Gene: KleverKiS\_18 Start: 9850, Stop: 11013, Start Num: 9

Candidate Starts for KleverKiS\_18:

(Start: 9 @9850 has 106 MA's), (25, 9934), (40, 10054), (41, 10057), (60, 10153), (63, 10174), (74, 10222), (89, 10267), (98, 10297), (105, 10330), (113, 10369), (128, 10480), (129, 10483), (131, 10489), (144, 10543), (151, 10570), (156, 10597), (160, 10615), (173, 10672), (177, 10690), (181, 10711), (190, 10744), (213, 10873), (220, 10927), (223, 10966),

Gene: Kokushibo\_8 Start: 5809, Stop: 6744, Start Num: 9

Candidate Starts for Kokushibo\_8:

(Start: 9 @5809 has 106 MA's), (22, 5881), (52, 6055), (67, 6130), (79, 6178), (81, 6187), (85, 6205), (101, 6289), (105, 6307), (126, 6439), (130, 6460), (169, 6625),

Gene: Kropertea\_8 Start: 5757, Stop: 6914, Start Num: 8

Candidate Starts for Kropertea\_8:

(Start: 8 @5757 has 212 MA's), (21, 5835), (25, 5850), (32, 5910), (40, 5964), (47, 6000), (59, 6057), (65, 6090), (70, 6108), (94, 6195), (103, 6225), (105, 6240), (111, 6267), (127, 6384), (128, 6390), (152, 6474), (174, 6582), (179, 6603), (201, 6672), (211, 6747), (220, 6813), (225, 6858), (228, 6894),

Gene: Krypton555\_9 Start: 6192, Stop: 7349, Start Num: 8

Candidate Starts for Krypton555\_9:

(Start: 8 @6192 has 212 MA's), (21, 6270), (25, 6285), (31, 6339), (32, 6345), (41, 6402), (47, 6435), (59, 6492), (65, 6525), (67, 6534), (103, 6660), (121, 6771), (127, 6819), (152, 6909), (174, 7017), (179, 7038), (188, 7062), (220, 7248), (222, 7275), (225, 7293),

Gene: Kudrefre\_16 Start: 9659, Stop: 10618, Start Num: 9

Candidate Starts for Kudrefre\_16:

(Start: 9 @9659 has 106 MA's), (17, 9704), (19, 9713), (59, 9959), (74, 10034), (87, 10073), (103, 10127), (110, 10166), (123, 10256), (147, 10367), (157, 10415), (163, 10448), (166, 10466), (182, 10535), (196, 10583),

Gene: Kumao\_17 Start: 9206, Stop: 10348, Start Num: 9

Candidate Starts for Kumao\_17:

(Start: 9 @9206 has 106 MA's), (14, 9239), (21, 9275), (51, 9461), (59, 9500), (67, 9542), (70, 9551), (105, 9683), (108, 9701), (128, 9833), (130, 9839), (143, 9893), (144, 9896), (151, 9923), (176, 10037), (179, 10052), (218, 10247), (220, 10262), (224, 10304),

Gene: LadyAstra\_6 Start: 5146, Stop: 6090, Start Num: 8

Candidate Starts for LadyAstra\_6:

(Start: 8 @5146 has 212 MA's), (18, 5197), (25, 5230), (58, 5437), (70, 5494), (109, 5647), (126, 5755), (134, 5788), (152, 5854), (165, 5926), (172, 5950), (177, 5971), (201, 6061),

Gene: Lannister\_11 Start: 7235, Stop: 8308, Start Num: 8

Candidate Starts for Lannister\_11:

(Start: 8 @7235 has 212 MA's), (64, 7586), (104, 7742), (132, 7910), (154, 7994), (172, 8078), (189, 8138), (206, 8216),

Gene: LeBron\_8 Start: 6085, Stop: 7236, Start Num: 9

Candidate Starts for LeBron\_8:

(Start: 9 @6085 has 106 MA's), (11, 6100), (17, 6130), (25, 6169), (31, 6223), (32, 6229), (47, 6319), (59, 6376), (63, 6403), (65, 6409), (105, 6559), (111, 6586), (127, 6703), (140, 6748), (152, 6793), (160, 6838), (167, 6877), (173, 6895), (174, 6901), (179, 6922), (201, 6991), (220, 7132), (225, 7177),

Gene: Legacy\_10 Start: 7231, Stop: 8295, Start Num: 8

Candidate Starts for Legacy\_10:

(Start: 8 @7231 has 212 MA's), (64, 7576), (101, 7717), (104, 7732), (132, 7900), (141, 7930), (154, 7984), (160, 8014), (172, 8068), (206, 8203),

Gene: Lego\_7 Start: 6820, Stop: 7767, Start Num: 8

Candidate Starts for Lego\_7:

(Start: 8 @6820 has 212 MA's), (18, 6871), (25, 6904), (46, 7054), (71, 7171), (105, 7300), (109, 7321), (125, 7420), (126, 7429), (139, 7480), (158, 7558), (165, 7603), (166, 7606), (172, 7627), (179, 7657), (182, 7672), (201, 7738),

Gene: Leviticus\_10 Start: 7251, Stop: 8324, Start Num: 8

Candidate Starts for Leviticus\_10:

(Start: 8 @7251 has 212 MA's), (64, 7602), (88, 7698), (101, 7743), (104, 7758), (132, 7926), (154, 8010), (160, 8040), (172, 8094), (189, 8154), (215, 8292),

Gene: Lewan\_8 Start: 6070, Stop: 7218, Start Num: 9

Candidate Starts for Lewan\_8:

(Start: 9 @6070 has 106 MA's), (11, 6085), (25, 6154), (31, 6208), (47, 6304), (63, 6388), (94, 6499), (103, 6529), (105, 6544), (110, 6568), (113, 6583), (125, 6670), (127, 6688), (128, 6694), (152, 6778), (160, 6823), (174, 6886), (179, 6907), (191, 6940), (201, 6976), (211, 7051), (220, 7117), (222, 7144),

Gene: Liebe\_6 Start: 5287, Stop: 6255, Start Num: 8

Candidate Starts for Liebe\_6:

(Start: 8 @5287 has 212 MA's), (25, 5371), (29, 5398), (41, 5494), (42, 5497), (53, 5560), (58, 5581), (105, 5791), (109, 5812), (129, 5938), (142, 5992), (152, 6019), (157, 6046), (173, 6121), (177, 6139), (190, 6190),

Gene: Lika\_10 Start: 7219, Stop: 8307, Start Num: 8

Candidate Starts for Lika\_10:

(Start: 8 @7219 has 212 MA's), (101, 7738), (104, 7753), (129, 7912), (154, 8005), (160, 8035), (172, 8089), (189, 8149),

Gene: LilDestine\_8 Start: 6070, Stop: 7218, Start Num: 9

Candidate Starts for LilDestine\_8:

(Start: 9 @6070 has 106 MA's), (11, 6085), (25, 6154), (31, 6208), (47, 6304), (63, 6388), (94, 6499), (103, 6529), (105, 6544), (110, 6568), (113, 6583), (125, 6670), (127, 6688), (128, 6694), (152, 6778), (160, 6823), (174, 6886), (179, 6907), (191, 6940), (201, 6976), (211, 7051), (220, 7117), (222, 7144),

Gene: LilJank\_16 Start: 9534, Stop: 10481, Start Num: 9

Candidate Starts for LilJank\_16:

(Start: 9 @9534 has 106 MA's), (18, 9585), (43, 9756), (47, 9777), (110, 10041), (116, 10074), (123, 10131), (129, 10173), (147, 10242),

Gene: LilhomieP\_17 Start: 9854, Stop: 11017, Start Num: 9

Candidate Starts for LilhomieP\_17:

(Start: 9 @9854 has 106 MA's), (25, 9938), (40, 10058), (41, 10061), (60, 10157), (63, 10178), (74, 10226), (89, 10271), (98, 10301), (105, 10334), (113, 10373), (128, 10484), (129, 10487), (131, 10493), (144, 10547), (151, 10574), (156, 10601), (160, 10619), (173, 10676), (177, 10694), (181, 10715), (190, 10748), (213, 10877), (220, 10931), (223, 10970),

Gene: LiyuLake\_9 Start: 6204, Stop: 7364, Start Num: 8

Candidate Starts for LiyuLake\_9:

(Start: 8 @6204 has 212 MA's), (21, 6282), (25, 6297), (31, 6351), (32, 6357), (40, 6411), (47, 6447), (59, 6504), (65, 6537), (67, 6546), (103, 6672), (127, 6831), (152, 6921), (174, 7029), (179, 7050), (222, 7290), (225, 7308),

Gene: Lizalica\_7 Start: 6812, Stop: 7759, Start Num: 8

Candidate Starts for Lizalica\_7:

(Start: 8 @6812 has 212 MA's), (18, 6863), (32, 6956), (38, 7004), (46, 7046), (63, 7136), (71, 7163), (105, 7292), (139, 7472), (158, 7550), (165, 7595), (168, 7607), (172, 7619), (179, 7649), (192, 7697), (201, 7730),

Gene: Loadrie\_8 Start: 6103, Stop: 7251, Start Num: 9

Candidate Starts for Loadrie\_8:

(Start: 9 @6103 has 106 MA's), (11, 6118), (25, 6187), (31, 6241), (47, 6337), (63, 6421), (94, 6532), (103, 6562), (105, 6577), (110, 6601), (113, 6616), (125, 6703), (127, 6721), (128, 6727), (152, 6811), (160, 6856), (174, 6919), (179, 6940), (191, 6973), (201, 7009), (211, 7084), (220, 7150), (222, 7177),

Gene: Lolly9\_9 Start: 6207, Stop: 7367, Start Num: 8

Candidate Starts for Lolly9\_9:

(Start: 8 @6207 has 212 MA's), (21, 6285), (25, 6300), (31, 6354), (32, 6360), (41, 6417), (47, 6450), (59, 6507), (65, 6540), (67, 6549), (103, 6675), (121, 6786), (127, 6834), (152, 6924), (174, 7032), (179, 7053), (222, 7293), (225, 7311),

Gene: London\_7 Start: 6809, Stop: 7753, Start Num: 8

Candidate Starts for London\_7:

(Start: 8 @6809 has 212 MA's), (18, 6860), (31, 6947), (32, 6953), (38, 7001), (41, 7016), (46, 7043), (94, 7244), (125, 7409), (139, 7469), (158, 7547), (165, 7592), (168, 7604), (172, 7616), (173, 7619), (179, 7646), (192, 7694), (194, 7703), (201, 7727),

Gene: Loofah\_11 Start: 7111, Stop: 8178, Start Num: 8

Candidate Starts for Loofah\_11:

(Start: 8 @7111 has 212 MA's), (47, 7372), (64, 7456), (101, 7609), (104, 7624), (110, 7651), (129, 7783), (141, 7822), (172, 7963), (206, 8098),

Gene: Lorelei\_10 Start: 7218, Stop: 8291, Start Num: 8

Candidate Starts for Lorelei\_10:

(Start: 8 @7218 has 212 MA's), (101, 7710), (104, 7725), (154, 7977), (160, 8007), (179, 8091), (189, 8121), (206, 8199),

Gene: Lumos\_9 Start: 6200, Stop: 7360, Start Num: 8

Candidate Starts for Lumos\_9:

(Start: 8 @6200 has 212 MA's), (21, 6278), (25, 6293), (31, 6347), (32, 6353), (41, 6410), (47, 6443), (59, 6500), (65, 6533), (67, 6542), (94, 6638), (103, 6668), (127, 6827), (152, 6917), (174, 7025), (179, 7046), (188, 7070), (218, 7238), (220, 7259), (225, 7304),

Gene: Lynnae\_8 Start: 6070, Stop: 7218, Start Num: 9

Candidate Starts for Lynnae\_8:

(Start: 9 @6070 has 106 MA's), (11, 6085), (25, 6154), (31, 6208), (47, 6304), (63, 6388), (94, 6499), (103, 6529), (105, 6544), (110, 6568), (113, 6583), (127, 6688), (128, 6694), (152, 6778), (160, 6823), (174, 6886), (179, 6907), (191, 6940), (201, 6976), (211, 7051), (220, 7117), (222, 7144),

Gene: MAckerman\_8 Start: 6084, Stop: 7235, Start Num: 9

Candidate Starts for MAckerman\_8:

(Start: 9 @6084 has 106 MA's), (11, 6099), (17, 6129), (25, 6168), (31, 6222), (32, 6228), (47, 6318), (59, 6375), (63, 6402), (65, 6408), (105, 6558), (111, 6585), (127, 6702), (140, 6747), (160, 6837), (167, 6876), (173, 6894), (174, 6900), (179, 6921), (201, 6990), (220, 7131), (225, 7176),

Gene: MaGuCo\_6 Start: 5146, Stop: 6114, Start Num: 8

Candidate Starts for MaGuCo\_6:

(Start: 8 @5146 has 212 MA's), (25, 5230), (29, 5257), (41, 5353), (42, 5356), (58, 5440), (105, 5650), (109, 5671), (129, 5797), (142, 5851), (152, 5878), (157, 5905), (173, 5980), (177, 5998), (190, 6049),

Gene: Mabodamaca\_7 Start: 6365, Stop: 7327, Start Num: 8

Candidate Starts for Mabodamaca\_7:

(Start: 8 @6365 has 212 MA's), (15, 6404), (25, 6452), (51, 6626), (105, 6857), (134, 7019), (142, 7058), (146, 7067), (161, 7136), (163, 7145), (173, 7187), (176, 7199),

Gene: Maneekul\_10 Start: 7223, Stop: 8296, Start Num: 8

Candidate Starts for Maneekul\_10:

(Start: 8 @7223 has 212 MA's), (101, 7715), (104, 7730), (129, 7889), (154, 7982), (160, 8012), (172, 8066), (206, 8204),

Gene: Marav\_13 Start: 7949, Stop: 9019, Start Num: 8

Candidate Starts for Marav\_13:

(Start: 8 @7949 has 212 MA's), (64, 8279), (88, 8375), (101, 8432), (139, 8639), (141, 8645), (154, 8699), (168, 8774), (172, 8786),

Gene: MaryV\_30 Start: 12944, Stop: 14122, Start Num: 9

Candidate Starts for MaryV\_30:

(Start: 9 @12944 has 106 MA's), (13, 12974), (18, 12995), (20, 13010), (25, 13028), (31, 13082), (32, 13088), (50, 13199), (54, 13217), (58, 13235), (70, 13292), (77, 13325), (111, 13457), (113, 13469), (115, 13484), (122, 13532), (133, 13595), (144, 13643), (151, 13670), (161, 13718), (164, 13730), (179, 13796), (207, 13925), (209, 13931), (211, 13961), (224, 14069), (230, 14117),

Gene: Maureen\_6 Start: 5287, Stop: 6255, Start Num: 8

Candidate Starts for Maureen\_6:

(Start: 8 @5287 has 212 MA's), (25, 5371), (29, 5398), (41, 5494), (42, 5497), (53, 5560), (58, 5581), (105, 5791), (109, 5812), (129, 5938), (142, 5992), (152, 6019), (157, 6046), (173, 6121), (177, 6139), (190, 6190),

Gene: Michkear\_10 Start: 8803, Stop: 9777, Start Num: 8

Candidate Starts for Michkear\_10:

(Start: 8 @8803 has 212 MA's), (29, 8914), (42, 9013), (46, 9037), (51, 9061), (71, 9157), (86, 9217), (106, 9319), (109, 9334), (126, 9442), (129, 9460), (142, 9514), (152, 9541), (173, 9643), (182, 9685), (192, 9718), (202, 9757),

Gene: MicyPS\_6 Start: 5936, Stop: 6847, Start Num: 9

Candidate Starts for MicyPS\_6:

(Start: 9 @5936 has 106 MA's), (22, 6008), (23, 6011), (35, 6092), (58, 6215), (60, 6227), (67, 6263), (117, 6476), (133, 6569), (171, 6734),

Gene: Miley16\_8 Start: 6070, Stop: 7218, Start Num: 9

Candidate Starts for Miley16\_8:

(Start: 9 @6070 has 106 MA's), (11, 6085), (25, 6154), (31, 6208), (47, 6304), (63, 6388), (94, 6499), (103, 6529), (105, 6544), (110, 6568), (113, 6583), (125, 6670), (127, 6688), (128, 6694), (152, 6778), (160, 6823), (174, 6886), (179, 6907), (191, 6940), (201, 6976), (211, 7051), (220, 7117), (222, 7144),

Gene: MiniLon\_9 Start: 6207, Stop: 7367, Start Num: 8

Candidate Starts for MiniLon\_9:

(Start: 8 @6207 has 212 MA's), (21, 6285), (25, 6300), (31, 6354), (32, 6360), (41, 6417), (47, 6450), (59, 6507), (65, 6540), (67, 6549), (103, 6675), (121, 6786), (127, 6834), (152, 6924), (174, 7032), (179, 7053), (222, 7293), (225, 7311),

Gene: MiniMac\_9 Start: 6208, Stop: 7368, Start Num: 8

Candidate Starts for MiniMac\_9:

(Start: 8 @6208 has 212 MA's), (21, 6286), (25, 6301), (31, 6355), (32, 6361), (41, 6418), (47, 6451), (59, 6508), (65, 6541), (67, 6550), (103, 6676), (121, 6787), (127, 6835), (152, 6925), (174, 7033), (179, 7054), (222, 7294), (225, 7312),

Gene: MiniMommy\_6 Start: 5155, Stop: 6096, Start Num: 8

Candidate Starts for MiniMommy\_6:

(Start: 8 @5155 has 212 MA's), (18, 5206), (38, 5347), (46, 5389), (58, 5446), (63, 5479), (70, 5503), (74, 5527), (109, 5656), (126, 5764), (134, 5797), (148, 5848), (152, 5863), (165, 5935), (172, 5959), (177, 5980), (192, 6037), (201, 6070),

Gene: MissSwiss\_7 Start: 6842, Stop: 7783, Start Num: 8

Candidate Starts for MissSwiss\_7:

(Start: 8 @6842 has 212 MA's), (18, 6893), (31, 6980), (41, 7046), (46, 7073), (58, 7130), (67, 7178), (70, 7187), (94, 7274), (101, 7301), (110, 7343), (139, 7499), (158, 7574), (165, 7619), (172, 7643), (173, 7646), (179, 7673), (182, 7688), (191, 7718), (201, 7754),

Gene: MkaliMitinis3\_8 Start: 6070, Stop: 7218, Start Num: 9

Candidate Starts for MkaliMitinis3\_8:

(Start: 9 @6070 has 106 MA's), (11, 6085), (25, 6154), (31, 6208), (47, 6304), (63, 6388), (94, 6499), (103, 6529), (105, 6544), (110, 6568), (113, 6583), (125, 6670), (127, 6688), (128, 6694), (152, 6778), (160, 6823), (174, 6886), (179, 6907), (191, 6940), (201, 6976), (211, 7051), (220, 7117), (222, 7144),

Gene: ModicumRichard\_7 Start: 5963, Stop: 6880, Start Num: 9

Candidate Starts for ModicumRichard\_7:

(Start: 9 @5963 has 106 MA's), (22, 6035), (35, 6122), (105, 6440), (130, 6593), (134, 6605), (146, 6653), (163, 6731), (169, 6761), (183, 6812),

Gene: Moostard\_9 Start: 6196, Stop: 7356, Start Num: 8

Candidate Starts for Moostard\_9:

(Start: 8 @6196 has 212 MA's), (21, 6274), (25, 6289), (31, 6343), (32, 6349), (41, 6406), (47, 6439), (59, 6496), (65, 6529), (67, 6538), (103, 6664), (127, 6823), (152, 6913), (174, 7021), (179, 7042), (188, 7066), (218, 7234), (220, 7255), (225, 7300),

Gene: Morgana\_7 Start: 5968, Stop: 6885, Start Num: 9

Candidate Starts for Morgana\_7:

(Start: 9 @5968 has 106 MA's), (22, 6040), (35, 6127), (105, 6445), (130, 6598), (134, 6610), (163, 6736), (169, 6766),

Gene: Moss\_7 Start: 6333, Stop: 7259, Start Num: 8

Candidate Starts for Moss\_7:

(Start: 8 @6333 has 212 MA's), (33, 6483), (37, 6498), (47, 6570), (71, 6681), (94, 6765), (101, 6792), (110, 6834), (129, 6957), (139, 6990), (148, 7023), (173, 7140), (179, 7167), (194, 7212), (201, 7236),

Gene: MrMagoo\_22 Start: 10388, Stop: 11554, Start Num: 9

Candidate Starts for MrMagoo\_22:

(Start: 9 @10388 has 106 MA's), (25, 10472), (28, 10496), (33, 10538), (40, 10592), (50, 10643), (60, 10691), (67, 10727), (70, 10736), (74, 10760), (86, 10796), (97, 10832), (108, 10886), (118, 10940), (128, 11018), (129, 11021), (144, 11081), (151, 11108), (156, 11135), (160, 11153), (173, 11210), (177, 11228), (181, 11249), (190, 11282), (213, 11417), (217, 11447), (219, 11468), (221, 11480),

Gene: MsGreen\_9 Start: 6200, Stop: 7360, Start Num: 8

Candidate Starts for MsGreen\_9:

(Start: 8 @6200 has 212 MA's), (21, 6278), (25, 6293), (31, 6347), (32, 6353), (41, 6410), (47, 6443), (59, 6500), (65, 6533), (67, 6542), (94, 6638), (103, 6668), (127, 6827), (152, 6917), (174, 7025), (179, 7046), (188, 7070), (218, 7238), (220, 7259), (225, 7304),

Gene: Mudpuppy\_7 Start: 6820, Stop: 7767, Start Num: 8

Candidate Starts for Mudpuppy\_7:

(Start: 8 @6820 has 212 MA's), (18, 6871), (25, 6904), (46, 7054), (63, 7144), (71, 7171), (74, 7192), (105, 7300), (109, 7321), (125, 7420), (126, 7429), (139, 7480), (158, 7558), (165, 7603), (166, 7606), (172, 7627), (179, 7657), (194, 7714), (201, 7738),

Gene: Mysterium\_7 Start: 6334, Stop: 7260, Start Num: 8

Candidate Starts for Mysterium\_7:

(Start: 8 @6334 has 212 MA's), (37, 6499), (47, 6571), (71, 6682), (94, 6766), (101, 6793), (110, 6835), (129, 6958), (139, 6991), (148, 7024), (173, 7141), (179, 7168), (194, 7213), (201, 7237),

Gene: Nabi\_10 Start: 7218, Stop: 8291, Start Num: 8

Candidate Starts for Nabi\_10:

(Start: 8 @7218 has 212 MA's), (101, 7710), (104, 7725), (154, 7977), (160, 8007), (179, 8091), (189, 8121), (206, 8199),

Gene: Nanodon\_12 Start: 7410, Stop: 8483, Start Num: 8

Candidate Starts for Nanodon\_12:

(Start: 8 @7410 has 212 MA's), (101, 7902), (108, 7938), (129, 8076), (141, 8115), (160, 8199), (172, 8253), (206, 8391),

Gene: Nanosmite\_22 Start: 10604, Stop: 11770, Start Num: 9

Candidate Starts for Nanosmite\_22:

(Start: 9 @10604 has 106 MA's), (25, 10688), (33, 10754), (40, 10808), (41, 10811), (60, 10907), (67, 10943), (74, 10976), (105, 11084), (118, 11156), (128, 11234), (129, 11237), (144, 11297), (151, 11324), (156, 11351), (160, 11369), (173, 11426), (177, 11444), (181, 11465), (190, 11498), (217, 11663), (219, 11684), (221, 11696),

Gene: Nerdos\_10 Start: 7251, Stop: 8324, Start Num: 8

Candidate Starts for Nerdos\_10:

(Start: 8 @7251 has 212 MA's), (64, 7602), (88, 7698), (101, 7743), (104, 7758), (132, 7926), (154, 8010), (160, 8040), (172, 8094), (189, 8154), (215, 8292),

Gene: Netyap\_8 Start: 6070, Stop: 7218, Start Num: 9

Candidate Starts for Netyap\_8:

(Start: 9 @6070 has 106 MA's), (11, 6085), (25, 6154), (31, 6208), (47, 6304), (63, 6388), (94, 6499), (103, 6529), (105, 6544), (110, 6568), (113, 6583), (125, 6670), (127, 6688), (128, 6694), (152, 6778), (160, 6823), (174, 6886), (179, 6907), (191, 6940), (201, 6976), (211, 7051), (220, 7117), (222, 7144),

Gene: Neville\_16 Start: 9483, Stop: 10430, Start Num: 9

Candidate Starts for Neville\_16:

(Start: 9 @9483 has 106 MA's), (18, 9534), (43, 9705), (47, 9726), (110, 9990), (116, 10023), (123, 10080), (147, 10191),

Gene: Nicholas\_9 Start: 6200, Stop: 7360, Start Num: 8

Candidate Starts for Nicholas\_9:

(Start: 8 @6200 has 212 MA's), (21, 6278), (25, 6293), (31, 6347), (32, 6353), (41, 6410), (47, 6443), (59, 6500), (65, 6533), (67, 6542), (94, 6638), (103, 6668), (127, 6827), (152, 6917), (174, 7025), (179, 7046), (188, 7070), (218, 7238), (220, 7259), (225, 7304),

Gene: Nicholasp3\_8 Start: 6070, Stop: 7218, Start Num: 9

Candidate Starts for Nicholasp3\_8:

(Start: 9 @6070 has 106 MA's), (11, 6085), (25, 6154), (31, 6208), (47, 6304), (63, 6388), (94, 6499), (103, 6529), (105, 6544), (110, 6568), (113, 6583), (125, 6670), (127, 6688), (128, 6694), (152, 6778), (160, 6823), (174, 6886), (179, 6907), (191, 6940), (201, 6976), (211, 7051), (220, 7117), (222, 7144),

Gene: Niobe\_7 Start: 6809, Stop: 7753, Start Num: 8

Candidate Starts for Niobe\_7:

(Start: 8 @6809 has 212 MA's), (18, 6860), (31, 6947), (32, 6953), (38, 7001), (41, 7016), (46, 7043), (94, 7244), (125, 7409), (139, 7469), (158, 7547), (165, 7592), (168, 7604), (172, 7616), (173, 7619), (179, 7646), (192, 7694), (194, 7703), (201, 7727),

Gene: Nishikigoi\_10 Start: 7041, Stop: 8087, Start Num: 8

Candidate Starts for Nishikigoi\_10:

(Start: 8 @7041 has 212 MA's), (22, 7116), (59, 7338), (78, 7422), (101, 7506), (104, 7521), (154, 7773), (160, 7803), (172, 7857),

Gene: Nitro\_7 Start: 6826, Stop: 7770, Start Num: 8

Candidate Starts for Nitro\_7:

(Start: 8 @6826 has 212 MA's), (18, 6877), (31, 6964), (38, 7018), (46, 7060), (63, 7150), (71, 7177), (94, 7261), (125, 7426), (139, 7486), (165, 7609), (168, 7621), (172, 7633), (173, 7636), (179, 7663), (192, 7711), (194, 7720), (201, 7744),

Gene: ObLaDi\_7 Start: 5963, Stop: 6880, Start Num: 9

Candidate Starts for ObLaDi\_7:

(Start: 9 @5963 has 106 MA's), (22, 6035), (35, 6122), (105, 6440), (130, 6593), (134, 6605), (146, 6653), (163, 6731), (169, 6761), (183, 6812),

Gene: ObiToo\_7 Start: 7019, Stop: 7966, Start Num: 8

Candidate Starts for ObiToo\_7:

(Start: 8 @7019 has 212 MA's), (18, 7070), (32, 7163), (46, 7253), (63, 7343), (71, 7370), (72, 7379), (80, 7412), (94, 7454), (109, 7520), (125, 7619), (134, 7661), (165, 7802), (166, 7805), (172, 7826), (179, 7856), (192, 7904), (201, 7937),

Gene: Octobien14\_17 Start: 10725, Stop: 11681, Start Num: 9

Candidate Starts for Octobien14\_17:

(Start: 9 @10725 has 106 MA's), (17, 10770), (19, 10779), (59, 11025), (74, 11100), (87, 11139), (103, 11193), (110, 11232), (123, 11322), (128, 11361), (134, 11379), (147, 11433), (163, 11514), (166, 11532), (182, 11601), (199, 11661),

Gene: OhShagHennessy\_8 Start: 6058, Stop: 7209, Start Num: 9

Candidate Starts for OhShagHennessy\_8:

(Start: 9 @6058 has 106 MA's), (11, 6073), (17, 6103), (25, 6142), (31, 6196), (32, 6202), (47, 6292), (59, 6349), (63, 6376), (65, 6382), (105, 6532), (111, 6559), (127, 6676), (140, 6721), (160, 6811), (167, 6850), (173, 6868), (174, 6874), (179, 6895), (201, 6964), (220, 7105), (225, 7150),

Gene: Oliynyk\_11 Start: 7414, Stop: 8487, Start Num: 8

Candidate Starts for Oliynyk\_11:

(Start: 8 @7414 has 212 MA's), (64, 7765), (88, 7861), (101, 7906), (104, 7921), (132, 8089), (154, 8173), (160, 8203), (172, 8257), (189, 8317),

Gene: Omar\_11 Start: 7265, Stop: 8311, Start Num: 8

Candidate Starts for Omar\_11:

(Start: 8 @7265 has 212 MA's), (59, 7562), (101, 7730), (104, 7745), (154, 7997), (172, 8081), (186, 8132),

Gene: Origami\_6 Start: 5146, Stop: 6090, Start Num: 8

Candidate Starts for Origami\_6:

(Start: 8 @5146 has 212 MA's), (18, 5197), (25, 5230), (58, 5437), (70, 5494), (109, 5647), (126, 5755), (134, 5788), (152, 5854), (165, 5926), (172, 5950), (177, 5971), (201, 6061),

Gene: OverPar\_8 Start: 6103, Stop: 7251, Start Num: 9

Candidate Starts for OverPar\_8:

(Start: 9 @6103 has 106 MA's), (11, 6118), (25, 6187), (31, 6241), (47, 6337), (63, 6421), (94, 6532), (103, 6562), (105, 6577), (110, 6601), (113, 6616), (125, 6703), (127, 6721), (128, 6727), (152, 6811), (160, 6856), (174, 6919), (179, 6940), (191, 6973), (201, 7009), (211, 7084), (220, 7150), (222, 7177),

Gene: Ozzie\_10 Start: 7231, Stop: 8304, Start Num: 8

Candidate Starts for Ozzie\_10:

(Start: 8 @7231 has 212 MA's), (64, 7582), (88, 7678), (101, 7723), (104, 7738), (132, 7906), (154, 7990), (160, 8020), (172, 8074), (189, 8134), (215, 8272),

Gene: OzzyJ\_11 Start: 7218, Stop: 8288, Start Num: 8

Candidate Starts for OzzyJ\_11:

(Start: 8 @7218 has 212 MA's), (101, 7710), (108, 7746), (129, 7884), (154, 7977), (160, 8007), (172, 8061),

Gene: PSonyx\_6 Start: 6028, Stop: 6939, Start Num: 9

Candidate Starts for PSonyx\_6:

(Start: 9 @6028 has 106 MA's), (22, 6100), (35, 6184), (58, 6307), (67, 6355), (133, 6661), (167, 6814), (171, 6826), (199, 6928),

Gene: PYPDinur\_8 Start: 5750, Stop: 6898, Start Num: 9

Candidate Starts for PYPDinur\_8:

(Start: 9 @5750 has 106 MA's), (25, 5834), (31, 5888), (32, 5894), (40, 5948), (47, 5984), (51, 6002), (59, 6041), (65, 6074), (103, 6209), (105, 6224), (109, 6245), (111, 6251), (127, 6368), (128, 6374), (152, 6458), (160, 6503), (163, 6518), (167, 6542), (173, 6560), (174, 6566), (178, 6584), (179, 6587), (193, 6626), (194, 6632), (201, 6656), (211, 6731), (220, 6797), (228, 6878),

Gene: Pablito\_10 Start: 7102, Stop: 8154, Start Num: 8

Candidate Starts for Pablito\_10:

(Start: 8 @7102 has 212 MA's), (64, 7426), (141, 7786), (154, 7840), (160, 7870), (172, 7924), (195, 8002), (206, 8062),

Gene: Paedore\_10 Start: 7111, Stop: 8178, Start Num: 8

Candidate Starts for Paedore\_10:

(Start: 8 @7111 has 212 MA's), (47, 7372), (64, 7456), (101, 7609), (104, 7624), (110, 7651), (129, 7783), (141, 7822), (172, 7963), (206, 8098),

Gene: PandaPo\_7 Start: 6842, Stop: 7783, Start Num: 8

Candidate Starts for PandaPo\_7:

(Start: 8 @6842 has 212 MA's), (18, 6893), (31, 6980), (41, 7046), (46, 7073), (58, 7130), (67, 7178), (70, 7187), (94, 7274), (101, 7301), (110, 7343), (139, 7499), (158, 7574), (165, 7619), (172, 7643), (173, 7646), (179, 7673), (182, 7688), (191, 7718), (201, 7754),

Gene: Paolo\_12 Start: 7638, Stop: 8696, Start Num: 8

Candidate Starts for Paolo\_12:

(Start: 8 @7638 has 212 MA's), (24, 7728), (64, 7968), (101, 8109), (139, 8316), (141, 8322), (154, 8376), (168, 8451), (172, 8463),

Gene: Pavo\_11 Start: 7340, Stop: 8368, Start Num: 8

Candidate Starts for Pavo\_11:

(Start: 8 @7340 has 212 MA's), (18, 7394), (30, 7475), (129, 7973), (154, 8066), (167, 8138), (173, 8156), (179, 8183), (208, 8300), (214, 8348),

Gene: PegLeg\_18 Start: 9853, Stop: 11016, Start Num: 9

Candidate Starts for PegLeg\_18:

(Start: 9 @9853 has 106 MA's), (25, 9937), (40, 10057), (41, 10060), (60, 10156), (63, 10177), (74, 10225), (89, 10270), (98, 10300), (105, 10333), (113, 10372), (128, 10483), (129, 10486), (131, 10492), (144, 10546), (151, 10573), (156, 10600), (160, 10618), (173, 10675), (177, 10693), (181, 10714), (190, 10747), (213, 10876), (220, 10930), (223, 10969),

Gene: Percival\_7 Start: 6994, Stop: 7971, Start Num: 5

Candidate Starts for Percival\_7:

(Start: 5 @6994 has 7 MA's), (25, 7093), (44, 7231), (51, 7267), (61, 7324), (63, 7336), (86, 7423), (125, 7615), (129, 7642), (146, 7705), (163, 7783), (168, 7810), (176, 7837), (183, 7870), (202, 7942),

Gene: Phettuccine\_10 Start: 7251, Stop: 8324, Start Num: 8

Candidate Starts for Phettuccine\_10:

(Start: 8 @7251 has 212 MA's), (64, 7602), (88, 7698), (101, 7743), (104, 7758), (132, 7926), (154, 8010), (160, 8040), (172, 8094), (189, 8154), (215, 8292),

Gene: Phives\_8 Start: 7909, Stop: 8859, Start Num: 8

Candidate Starts for Phives\_8:

(Start: 8 @7909 has 212 MA's), (18, 7960), (31, 8047), (38, 8101), (46, 8143), (66, 8242), (71, 8260), (80, 8302), (94, 8344), (105, 8389), (125, 8509), (158, 8647), (165, 8692), (168, 8704), (172, 8716), (179, 8746), (182, 8761), (201, 8827),

Gene: Pixelle\_7 Start: 6852, Stop: 7802, Start Num: 8

Candidate Starts for Pixelle\_7:

(Start: 8 @6852 has 212 MA's), (18, 6903), (31, 6990), (38, 7044), (46, 7086), (66, 7185), (71, 7203), (87, 7263), (94, 7287), (105, 7332), (125, 7452), (158, 7590), (165, 7635), (168, 7647), (172, 7659), (179, 7689), (182, 7704), (201, 7770),

Gene: Ponzi\_46 Start: 26481, Stop: 27572, Start Num: 8

Candidate Starts for Ponzi\_46:

(4, 26469), (Start: 8 @26481 has 212 MA's), (49, 26796), (57, 26838), (82, 27003), (100, 27093), (118, 27186), (119, 27192), (129, 27261), (137, 27288), (153, 27345), (159, 27375), (162, 27396), (168, 27426), (175, 27450),

Gene: Pochiewood\_8 Start: 6084, Stop: 7235, Start Num: 9

Candidate Starts for Pochiewood\_8:

(Start: 9 @6084 has 106 MA's), (11, 6099), (17, 6129), (25, 6168), (31, 6222), (32, 6228), (47, 6318), (59, 6375), (63, 6402), (65, 6408), (105, 6558), (111, 6585), (127, 6702), (140, 6747), (160, 6837), (167, 6876), (173, 6894), (174, 6900), (179, 6921), (201, 6990), (220, 7131), (225, 7176),

Gene: Powerpuff\_7 Start: 6871, Stop: 7818, Start Num: 8

Candidate Starts for Powerpuff\_7:

(Start: 8 @6871 has 212 MA's), (18, 6922), (25, 6955), (46, 7105), (71, 7222), (105, 7351), (109, 7372), (125, 7471), (126, 7480), (139, 7531), (158, 7609), (165, 7654), (166, 7657), (172, 7678), (179, 7708), (182, 7723), (201, 7789),

Gene: Provolone\_11 Start: 7070, Stop: 8098, Start Num: 8

Candidate Starts for Provolone\_11:

(Start: 8 @7070 has 212 MA's), (18, 7124), (30, 7205), (129, 7703), (154, 7796), (167, 7868), (173, 7886), (179, 7913), (208, 8030), (214, 8078),

Gene: Puginator\_12 Start: 7584, Stop: 8642, Start Num: 8

Candidate Starts for Puginator\_12:

(Start: 8 @7584 has 212 MA's), (24, 7674), (64, 7914), (101, 8055), (139, 8262), (141, 8268), (154, 8322), (168, 8397), (172, 8409),

Gene: Pumpkins\_7 Start: 6934, Stop: 7881, Start Num: 8

Candidate Starts for Pumpkins\_7:

(Start: 8 @6934 has 212 MA's), (18, 6985), (31, 7072), (41, 7141), (63, 7258), (71, 7285), (94, 7369), (110, 7438), (111, 7441), (134, 7576), (166, 7720), (172, 7741), (179, 7771), (182, 7786), (193, 7822), (201, 7852),

Gene: Quby\_8 Start: 5749, Stop: 6897, Start Num: 9

Candidate Starts for Quby\_8:

(Start: 9 @5749 has 106 MA's), (25, 5833), (31, 5887), (32, 5893), (40, 5947), (47, 5983), (51, 6001), (59, 6040), (65, 6073), (94, 6178), (103, 6208), (105, 6223), (109, 6244), (111, 6250), (127, 6367), (128, 6373), (152, 6457), (160, 6502), (163, 6517), (167, 6541), (173, 6559), (174, 6565), (179, 6586), (188, 6610), (201, 6655), (211, 6730), (220, 6796), (228, 6877),

Gene: R4\_10 Start: 7079, Stop: 8146, Start Num: 8

Candidate Starts for R4\_10:

(Start: 8 @7079 has 212 MA's), (47, 7340), (64, 7424), (101, 7577), (104, 7592), (110, 7619), (129, 7751), (141, 7790), (172, 7931), (206, 8066),

Gene: Rabbitrun\_18 Start: 10006, Stop: 10953, Start Num: 9

Candidate Starts for Rabbitrun\_18:

(Start: 9 @10006 has 106 MA's), (18, 10057), (43, 10228), (110, 10513), (116, 10546), (123, 10603), (129, 10645), (163, 10789), (182, 10876),

Gene: Rana\_10 Start: 7218, Stop: 8291, Start Num: 8

Candidate Starts for Rana\_10:

(Start: 8 @7218 has 212 MA's), (101, 7710), (104, 7725), (154, 7977), (160, 8007), (179, 8091), (189, 8121), (206, 8199),

Gene: Red305\_9 Start: 6200, Stop: 7360, Start Num: 8

Candidate Starts for Red305\_9:

(Start: 8 @6200 has 212 MA's), (21, 6278), (25, 6293), (31, 6347), (32, 6353), (41, 6410), (47, 6443), (59, 6500), (65, 6533), (67, 6542), (94, 6638), (103, 6668), (127, 6827), (152, 6917), (174, 7025), (179, 7046), (188, 7070), (218, 7238), (220, 7259), (225, 7304),

Gene: RedBear\_12 Start: 7494, Stop: 8567, Start Num: 8

Candidate Starts for RedBear\_12:

(Start: 8 @7494 has 212 MA's), (101, 7986), (108, 8022), (129, 8160), (141, 8199), (160, 8283), (172, 8337), (206, 8475),

Gene: Reedo\_7 Start: 6854, Stop: 7810, Start Num: 8

Candidate Starts for Reedo\_7:

(Start: 8 @6854 has 212 MA's), (41, 7067), (46, 7094), (58, 7151), (67, 7199), (70, 7208), (105, 7349), (110, 7373), (126, 7478), (129, 7496), (134, 7511), (157, 7604), (165, 7652), (172, 7676), (180, 7712), (183, 7724), (198, 7772), (201, 7781),

Gene: Reindeer\_16 Start: 9706, Stop: 10869, Start Num: 9

Candidate Starts for Reindeer\_16:

(Start: 9 @9706 has 106 MA's), (25, 9790), (40, 9910), (41, 9913), (60, 10009), (63, 10030), (70, 10054), (86, 10114), (97, 10150), (98, 10153), (105, 10186), (113, 10225), (128, 10336), (129, 10339), (131, 10345), (144, 10399), (151, 10426), (156, 10453), (160, 10471), (173, 10528), (177, 10546), (179, 10555), (181, 10567), (190, 10600), (213, 10729), (220, 10783), (221, 10792), (224, 10825),

Gene: Rey\_22 Start: 10623, Stop: 11789, Start Num: 9

Candidate Starts for Rey\_22:

(Start: 9 @10623 has 106 MA's), (25, 10707), (28, 10731), (33, 10773), (40, 10827), (50, 10878), (60, 10926), (67, 10962), (74, 10995), (86, 11031), (97, 11067), (108, 11121), (114, 11154), (118, 11175), (128, 11253), (129, 11256), (144, 11316), (151, 11343), (156, 11370), (160, 11388), (173, 11445), (177, 11463), (181, 11484), (190, 11517), (213, 11652), (217, 11682),

Gene: RockScotty\_7 Start: 6333, Stop: 7259, Start Num: 8

Candidate Starts for RockScotty\_7:

(Start: 8 @6333 has 212 MA's), (33, 6483), (37, 6498), (47, 6570), (71, 6681), (94, 6765), (101, 6792), (110, 6834), (129, 6957), (139, 6990), (148, 7023), (173, 7140), (179, 7167), (194, 7212), (201, 7236),

Gene: Rose5\_8 Start: 6084, Stop: 7235, Start Num: 9

Candidate Starts for Rose5\_8:

(Start: 9 @6084 has 106 MA's), (11, 6099), (17, 6129), (25, 6168), (31, 6222), (32, 6228), (47, 6318), (59, 6375), (63, 6402), (65, 6408), (105, 6558), (111, 6585), (127, 6702), (140, 6747), (160, 6837), (167, 6876), (173, 6894), (174, 6900), (179, 6921), (201, 6990), (220, 7131), (225, 7176),

Gene: RoseMarie\_18 Start: 10097, Stop: 11260, Start Num: 9

Candidate Starts for RoseMarie\_18:

(Start: 9 @10097 has 106 MA's), (25, 10181), (40, 10301), (41, 10304), (60, 10400), (63, 10421), (70, 10445), (86, 10505), (98, 10544), (105, 10577), (108, 10595), (113, 10616), (128, 10727), (129, 10730), (144, 10790), (151, 10817), (156, 10844), (160, 10862), (177, 10937), (181, 10958), (190, 10991), (203, 11048), (213, 11120), (220, 11174), (224, 11216), (226, 11225),

Gene: Rossetti\_8 Start: 6070, Stop: 7218, Start Num: 9

Candidate Starts for Rossetti\_8:

(Start: 9 @6070 has 106 MA's), (11, 6085), (25, 6154), (31, 6208), (47, 6304), (63, 6388), (94, 6499), (103, 6529), (105, 6544), (110, 6568), (113, 6583), (125, 6670), (127, 6688), (128, 6694), (152, 6778), (160, 6823), (174, 6886), (179, 6907), (191, 6940), (201, 6976), (219, 7114), (220, 7117), (228, 7198),

Gene: Rumpelstiltskin\_8 Start: 6070, Stop: 7218, Start Num: 9

Candidate Starts for Rumpelstiltskin\_8:

(Start: 9 @6070 has 106 MA's), (11, 6085), (25, 6154), (31, 6208), (47, 6304), (63, 6388), (94, 6499), (103, 6529), (105, 6544), (110, 6568), (113, 6583), (125, 6670), (127, 6688), (128, 6694), (152, 6778), (160, 6823), (174, 6886), (179, 6907), (191, 6940), (201, 6976), (211, 7051), (220, 7117), (222, 7144),

Gene: RunningOnE\_67 Start: 31699, Stop: 32793, Start Num: 8

Candidate Starts for RunningOnE\_67:

(Start: 8 @31699 has 212 MA's), (33, 31870), (45, 31990), (57, 32053), (68, 32119), (91, 32263), (95, 32287), (100, 32308), (119, 32407), (137, 32503), (153, 32560), (155, 32569), (157, 32581), (159, 32590), (162, 32611), (175, 32665),

Gene: Rusticus\_11 Start: 7414, Stop: 8487, Start Num: 8

Candidate Starts for Rusticus\_11:

(Start: 8 @7414 has 212 MA's), (64, 7765), (88, 7861), (101, 7906), (104, 7921), (132, 8089), (154, 8173), (160, 8203), (172, 8257), (189, 8317),

Gene: Sabourin\_7 Start: 6242, Stop: 7168, Start Num: 8

Candidate Starts for Sabourin\_7:

(Start: 8 @6242 has 212 MA's), (33, 6392), (37, 6407), (47, 6479), (71, 6590), (94, 6674), (101, 6701), (110, 6743), (126, 6848), (129, 6866), (139, 6899), (148, 6932), (173, 7049), (179, 7076), (190, 7112), (201, 7145),

Gene: Saftant\_10 Start: 7346, Stop: 8374, Start Num: 8

Candidate Starts for Saftant\_10:

(Start: 8 @7346 has 212 MA's), (18, 7400), (55, 7622), (120, 7910), (129, 7979), (154, 8072), (167, 8144), (173, 8162), (179, 8189), (195, 8237), (208, 8306), (214, 8354),

Gene: Samty\_9 Start: 6196, Stop: 7356, Start Num: 8

Candidate Starts for Samty\_9:

(Start: 8 @6196 has 212 MA's), (21, 6274), (25, 6289), (31, 6343), (32, 6349), (41, 6406), (47, 6439), (59, 6496), (65, 6529), (67, 6538), (103, 6664), (127, 6823), (152, 6913), (174, 7021), (179, 7042), (188, 7066), (218, 7234), (220, 7255), (225, 7300),

Gene: SarahRose\_10 Start: 7220, Stop: 8293, Start Num: 8

Candidate Starts for SarahRose\_10:

(Start: 8 @7220 has 212 MA's), (101, 7712), (104, 7727), (152, 7967), (154, 7979), (160, 8009), (172, 8063), (206, 8201),

Gene: Sarshaun\_8 Start: 6103, Stop: 7251, Start Num: 9

Candidate Starts for Sarshaun\_8:

(Start: 9 @6103 has 106 MA's), (11, 6118), (25, 6187), (31, 6241), (47, 6337), (63, 6421), (94, 6532), (103, 6562), (105, 6577), (110, 6601), (113, 6616), (125, 6703), (127, 6721), (128, 6727), (152, 6811), (160, 6856), (174, 6919), (179, 6940), (191, 6973), (201, 7009), (211, 7084), (220, 7150), (222, 7177),

Gene: Schaffner\_7 Start: 6931, Stop: 7878, Start Num: 8

Candidate Starts for Schaffner\_7:

(Start: 8 @6931 has 212 MA's), (18, 6982), (31, 7069), (63, 7255), (71, 7282), (94, 7366), (110, 7435), (111, 7438), (134, 7573), (165, 7714), (166, 7717), (172, 7738), (177, 7759), (179, 7768), (201, 7849),

Gene: Sephiroth\_17 Start: 9830, Stop: 10789, Start Num: 9

Candidate Starts for Sephiroth\_17:

(Start: 9 @9830 has 106 MA's), (17, 9875), (19, 9884), (59, 10130), (74, 10205), (87, 10244), (103, 10298), (110, 10337), (123, 10427), (147, 10538), (157, 10586), (163, 10619), (166, 10637), (182, 10706), (196, 10754),

Gene: ShakeltOph\_6 Start: 5155, Stop: 6096, Start Num: 8

Candidate Starts for ShakeltOph\_6:

(Start: 8 @5155 has 212 MA's), (18, 5206), (38, 5347), (46, 5389), (58, 5446), (63, 5479), (70, 5503), (74, 5527), (109, 5656), (126, 5764), (134, 5797), (148, 5848), (152, 5863), (165, 5935), (172, 5959), (177, 5980), (192, 6037), (201, 6070),

Gene: Sheng711\_8 Start: 5750, Stop: 6898, Start Num: 9

Candidate Starts for Sheng711\_8:

(Start: 9 @5750 has 106 MA's), (25, 5834), (31, 5888), (32, 5894), (40, 5948), (47, 5984), (51, 6002), (59, 6041), (65, 6074), (103, 6209), (105, 6224), (109, 6245), (111, 6251), (127, 6368), (128, 6374), (152, 6458), (160, 6503), (163, 6518), (167, 6542), (173, 6560), (174, 6566), (178, 6584), (179, 6587),

(193, 6626), (194, 6632), (201, 6656), (211, 6731), (220, 6797), (228, 6878),

Gene: Silverleaf\_8 Start: 6084, Stop: 7235, Start Num: 9

Candidate Starts for Silverleaf\_8:

(Start: 9 @6084 has 106 MA's), (11, 6099), (17, 6129), (25, 6168), (31, 6222), (32, 6228), (47, 6318), (59, 6375), (63, 6402), (65, 6408), (105, 6558), (111, 6585), (127, 6702), (140, 6747), (160, 6837), (167, 6876), (173, 6894), (174, 6900), (179, 6921), (201, 6990), (220, 7131), (225, 7176),

Gene: Simpson\_7 Start: 6821, Stop: 7768, Start Num: 8

Candidate Starts for Simpson\_7:

(Start: 8 @6821 has 212 MA's), (18, 6872), (25, 6905), (32, 6965), (38, 7013), (46, 7055), (71, 7172), (94, 7256), (105, 7301), (109, 7322), (125, 7421), (134, 7463), (152, 7529), (158, 7559), (165, 7604), (168, 7616), (173, 7631), (179, 7658), (192, 7706), (201, 7739),

Gene: Skelbel\_7 Start: 6809, Stop: 7753, Start Num: 8

Candidate Starts for Skelbel\_7:

(Start: 8 @6809 has 212 MA's), (18, 6860), (31, 6947), (38, 7001), (46, 7043), (63, 7133), (71, 7160), (94, 7244), (105, 7289), (125, 7409), (134, 7451), (139, 7469), (158, 7547), (165, 7592), (168, 7604), (172, 7616), (173, 7619), (179, 7646), (192, 7694), (194, 7703), (201, 7727),

Gene: Skinny\_19 Start: 9854, Stop: 11017, Start Num: 9

Candidate Starts for Skinny\_19:

(Start: 9 @9854 has 106 MA's), (25, 9938), (40, 10058), (41, 10061), (60, 10157), (63, 10178), (74, 10226), (89, 10271), (98, 10301), (105, 10334), (113, 10373), (128, 10484), (129, 10487), (131, 10493), (144, 10547), (151, 10574), (156, 10601), (160, 10619), (173, 10676), (177, 10694), (181, 10715), (190, 10748), (213, 10877), (220, 10931), (223, 10970),

Gene: SlimJimmy\_17 Start: 9853, Stop: 11016, Start Num: 9

Candidate Starts for SlimJimmy\_17:

(Start: 9 @9853 has 106 MA's), (25, 9937), (40, 10057), (41, 10060), (60, 10156), (63, 10177), (74, 10225), (89, 10270), (98, 10300), (105, 10333), (113, 10372), (128, 10483), (129, 10486), (131, 10492), (144, 10546), (151, 10573), (156, 10600), (160, 10618), (173, 10675), (177, 10693), (181, 10714), (190, 10747), (213, 10876), (220, 10930), (223, 10969),

Gene: Snek\_7 Start: 5954, Stop: 6895, Start Num: 8

Candidate Starts for Snek\_7:

(Start: 8 @5954 has 212 MA's), (18, 6011), (31, 6098), (41, 6167), (46, 6194), (53, 6230), (58, 6251), (63, 6284), (71, 6311), (80, 6353), (99, 6416), (105, 6443), (110, 6467), (129, 6590), (142, 6644), (165, 6746), (172, 6770), (192, 6848),

Gene: Snenia\_9 Start: 6201, Stop: 7361, Start Num: 8

Candidate Starts for Snenia\_9:

(Start: 8 @6201 has 212 MA's), (21, 6279), (25, 6294), (31, 6348), (32, 6354), (41, 6411), (47, 6444), (59, 6501), (65, 6534), (67, 6543), (94, 6639), (103, 6669), (127, 6828), (152, 6918), (174, 7026), (179, 7047), (188, 7071), (218, 7239), (220, 7260), (225, 7305),

Gene: Snorlax\_10 Start: 7220, Stop: 8293, Start Num: 8

Candidate Starts for Snorlax\_10:

(Start: 8 @7220 has 212 MA's), (101, 7712), (104, 7727), (152, 7967), (154, 7979), (160, 8009), (172, 8063), (206, 8201),

Gene: SoJulia\_8 Start: 6070, Stop: 7218, Start Num: 9

Candidate Starts for SoJulia\_8:

(Start: 9 @6070 has 106 MA's), (11, 6085), (25, 6154), (31, 6208), (47, 6304), (63, 6388), (94, 6499), (103, 6529), (105, 6544), (110, 6568), (113, 6583), (125, 6670), (127, 6688), (128, 6694), (152, 6778), (160, 6823), (174, 6886), (179, 6907), (191, 6940), (201, 6976), (211, 7051), (220, 7117), (222, 7144),

Gene: Soap141\_8 Start: 6103, Stop: 7251, Start Num: 9

Candidate Starts for Soap141\_8:

(Start: 9 @6103 has 106 MA's), (11, 6118), (25, 6187), (31, 6241), (47, 6337), (63, 6421), (94, 6532), (103, 6562), (105, 6577), (110, 6601), (113, 6616), (125, 6703), (127, 6721), (128, 6727), (152, 6811), (160, 6856), (174, 6919), (179, 6940), (191, 6973), (201, 7009), (211, 7084), (220, 7150), (222, 7177),

Gene: Soondubu\_7 Start: 6844, Stop: 7797, Start Num: 8

Candidate Starts for Soondubu\_7:

(Start: 8 @6844 has 212 MA's), (16, 6889), (31, 6988), (36, 7012), (41, 7054), (42, 7057), (80, 7240), (105, 7327), (109, 7348), (128, 7471), (154, 7567), (172, 7654), (179, 7684), (182, 7699), (192, 7732), (201, 7765),

Gene: Sooty\_7 Start: 6243, Stop: 7169, Start Num: 8

Candidate Starts for Sooty\_7:

(Start: 8 @6243 has 212 MA's), (33, 6393), (37, 6408), (47, 6480), (71, 6591), (94, 6675), (101, 6702), (110, 6744), (126, 6849), (129, 6867), (139, 6900), (148, 6933), (173, 7050), (179, 7077), (190, 7113), (201, 7146),

Gene: South40\_11 Start: 7494, Stop: 8567, Start Num: 8

Candidate Starts for South40\_11:

(Start: 8 @7494 has 212 MA's), (101, 7986), (108, 8022), (129, 8160), (141, 8199), (160, 8283), (172, 8337), (206, 8475),

Gene: SpecialK\_7 Start: 6240, Stop: 7166, Start Num: 8

Candidate Starts for SpecialK\_7:

(Start: 8 @6240 has 212 MA's), (33, 6390), (37, 6405), (47, 6477), (71, 6588), (94, 6672), (101, 6699), (110, 6741), (129, 6864), (139, 6897), (148, 6930), (173, 7047), (179, 7074), (194, 7119), (201, 7143),

Gene: Speedwell\_15 Start: 9032, Stop: 10111, Start Num: 8

Candidate Starts for Speedwell\_15:

(Start: 8 @9032 has 212 MA's), (18, 9086), (30, 9167), (40, 9260), (51, 9314), (84, 9461), (129, 9689), (167, 9854), (173, 9872), (179, 9899), (216, 10079),

Gene: Spocter\_7 Start: 5809, Stop: 6744, Start Num: 9

Candidate Starts for Spocter\_7:

(Start: 9 @5809 has 106 MA's), (22, 5881), (52, 6055), (67, 6130), (79, 6178), (81, 6187), (85, 6205), (101, 6289), (105, 6307), (126, 6439), (130, 6460), (169, 6625),

Gene: SqueakyClean\_11 Start: 7349, Stop: 8395, Start Num: 8

Candidate Starts for SqueakyClean\_11:

(Start: 8 @7349 has 212 MA's), (59, 7646), (64, 7673), (101, 7814), (104, 7829), (129, 7988), (154, 8081), (172, 8165), (206, 8303),

Gene: Stuu\_7 Start: 6333, Stop: 7259, Start Num: 8

Candidate Starts for Stuu\_7:

(Start: 8 @6333 has 212 MA's), (33, 6483), (37, 6498), (47, 6570), (71, 6681), (94, 6765), (101, 6792), (110, 6834), (129, 6957), (139, 6990), (148, 7023), (173, 7140), (179, 7167), (194, 7212), (201, 7236),

Gene: SuMoo\_6 Start: 5326, Stop: 6291, Start Num: 8

Candidate Starts for SuMoo\_6:

(Start: 8 @5326 has 212 MA's), (15, 5365), (25, 5413), (51, 5587), (105, 5818), (134, 5980), (142, 6019), (146, 6028), (161, 6097), (163, 6106), (173, 6148), (176, 6160), (202, 6265),

Gene: Subaru\_7 Start: 6809, Stop: 7753, Start Num: 8

Candidate Starts for Subaru\_7:

(Start: 8 @6809 has 212 MA's), (18, 6860), (31, 6947), (38, 7001), (46, 7043), (63, 7133), (71, 7160), (94, 7244), (105, 7289), (125, 7409), (134, 7451), (139, 7469), (158, 7547), (165, 7592), (168, 7604), (172, 7616), (173, 7619), (179, 7646), (192, 7694), (194, 7703), (201, 7727),

Gene: Sudan\_10 Start: 7347, Stop: 8375, Start Num: 8

Candidate Starts for Sudan\_10:

(Start: 8 @7347 has 212 MA's), (18, 7401), (30, 7482), (129, 7980), (154, 8073), (167, 8145), (173, 8163), (179, 8190), (208, 8307), (214, 8355),

Gene: Sue2\_7 Start: 6842, Stop: 7795, Start Num: 8

Candidate Starts for Sue2\_7:

(Start: 8 @6842 has 212 MA's), (42, 7058), (46, 7082), (53, 7118), (58, 7139), (63, 7172), (71, 7199), (77, 7229), (129, 7484), (134, 7499), (158, 7595), (173, 7667), (176, 7679), (180, 7700), (193, 7745), (198, 7760), (201, 7769), (202, 7775),

Gene: Sujidade\_11 Start: 7516, Stop: 8589, Start Num: 8

Candidate Starts for Sujidade\_11:

(Start: 8 @7516 has 212 MA's), (101, 8008), (104, 8023), (129, 8182), (154, 8275), (160, 8305), (172, 8359), (206, 8497),

Gene: SunkenRoot\_12 Start: 7405, Stop: 8487, Start Num: 8

Candidate Starts for SunkenRoot\_12:

(Start: 8 @7405 has 212 MA's), (18, 7462), (129, 8065), (167, 8230), (173, 8248), (179, 8275), (183, 8284),

Gene: SunsetPointe\_10 Start: 7250, Stop: 8314, Start Num: 8

Candidate Starts for SunsetPointe\_10:

(Start: 8 @7250 has 212 MA's), (64, 7595), (101, 7736), (104, 7751), (132, 7919), (141, 7949), (154, 8003), (160, 8033), (172, 8087), (206, 8222),

Gene: SuperHands\_7 Start: 7166, Stop: 8143, Start Num: 5

Candidate Starts for SuperHands\_7:

(Start: 5 @7166 has 7 MA's), (25, 7265), (44, 7403), (51, 7439), (61, 7496), (63, 7508), (86, 7595), (125, 7787), (129, 7814), (146, 7877), (163, 7955), (168, 7982), (176, 8009), (184, 8045), (186, 8054), (202, 8114),

Gene: Superstar\_12 Start: 8160, Stop: 9218, Start Num: 8

Candidate Starts for Superstar\_12:

(Start: 8 @8160 has 212 MA's), (64, 8490), (103, 8634), (122, 8754), (139, 8838), (141, 8844), (173, 8988), (201, 9087), (206, 9126),

Gene: Syleon\_17 Start: 9752, Stop: 10711, Start Num: 9

Candidate Starts for Syleon\_17:

(Start: 9 @9752 has 106 MA's), (17, 9797), (19, 9806), (59, 10052), (74, 10127), (87, 10166), (110, 10259), (123, 10349), (147, 10460), (157, 10508), (163, 10541), (166, 10559), (173, 10583), (196, 10676),

Gene: TagePighter\_11 Start: 7220, Stop: 8293, Start Num: 8

Candidate Starts for TagePighter\_11:

(Start: 8 @7220 has 212 MA's), (101, 7712), (104, 7727), (152, 7967), (154, 7979), (160, 8009), (172, 8063), (206, 8201),

Gene: Tallboi\_7 Start: 6841, Stop: 7788, Start Num: 8

Candidate Starts for Tallboi\_7:

(Start: 8 @6841 has 212 MA's), (18, 6892), (31, 6979), (38, 7033), (46, 7075), (66, 7174), (71, 7192), (74, 7213), (80, 7234), (110, 7345), (111, 7348), (125, 7441), (134, 7483), (158, 7579), (165, 7624), (168, 7636), (172, 7648), (179, 7678), (192, 7726), (201, 7759),

Gene: Taotie\_6 Start: 6925, Stop: 7836, Start Num: 9

Candidate Starts for Taotie\_6:

(Start: 9 @6925 has 106 MA's), (22, 6997), (35, 7081), (58, 7204), (67, 7252), (133, 7558), (167, 7711), (171, 7723), (199, 7825),

Gene: Tbone\_7 Start: 6817, Stop: 7764, Start Num: 8

Candidate Starts for Tbone\_7:

(Start: 8 @6817 has 212 MA's), (18, 6868), (25, 6901), (46, 7051), (63, 7141), (71, 7168), (74, 7189), (105, 7297), (109, 7318), (125, 7417), (126, 7426), (139, 7477), (158, 7555), (165, 7600), (166, 7603), (172, 7624), (179, 7654), (194, 7711), (201, 7735),

Gene: Tefunt\_10 Start: 7041, Stop: 8087, Start Num: 8

Candidate Starts for Tefunt\_10:

(Start: 8 @7041 has 212 MA's), (22, 7116), (59, 7338), (78, 7422), (101, 7506), (104, 7521), (154, 7773), (160, 7803), (172, 7857), (179, 7887),

Gene: TforTroy\_7 Start: 6957, Stop: 7907, Start Num: 8

Candidate Starts for TforTroy\_7:

(Start: 8 @6957 has 212 MA's), (13, 6987), (18, 7008), (47, 7197), (72, 7317), (105, 7437), (110, 7461), (111, 7464), (134, 7599), (165, 7740), (166, 7743), (172, 7764), (179, 7794), (182, 7809), (193, 7845), (201, 7875),

Gene: Thestral\_11 Start: 7104, Stop: 8162, Start Num: 8

Candidate Starts for Thestral\_11:

(Start: 8 @7104 has 212 MA's), (64, 7434), (83, 7512), (103, 7578), (160, 7875), (173, 7932),

Gene: ThursdayNight\_6 Start: 5353, Stop: 6318, Start Num: 8

Candidate Starts for ThursdayNight\_6:

(Start: 8 @5353 has 212 MA's), (24, 5434), (41, 5560), (42, 5563), (78, 5740), (86, 5767), (105, 5854), (106, 5860), (109, 5875), (190, 6253),

Gene: Tian\_7 Start: 6849, Stop: 7799, Start Num: 8

Candidate Starts for Tian\_7:

(Start: 8 @6849 has 212 MA's), (18, 6900), (38, 7041), (46, 7083), (71, 7200), (105, 7329), (111, 7356), (125, 7449), (158, 7587), (165, 7632), (168, 7644), (172, 7656), (179, 7686), (182, 7701), (194, 7743), (201, 7767),

Gene: TinaBelcher\_10 Start: 7052, Stop: 8110, Start Num: 8

Candidate Starts for TinaBelcher\_10:

(Start: 8 @7052 has 212 MA's), (64, 7382), (83, 7460), (103, 7526), (173, 7880),

Gene: Toma\_10 Start: 7221, Stop: 8297, Start Num: 8

Candidate Starts for Toma\_10:

(Start: 8 @7221 has 212 MA's), (101, 7719), (108, 7755), (129, 7893), (141, 7932), (160, 8016), (161, 8022), (179, 8100), (206, 8205),

Gene: Tourach\_8 Start: 6084, Stop: 7232, Start Num: 9

Candidate Starts for Tourach\_8:

(Start: 9 @6084 has 106 MA's), (11, 6099), (17, 6129), (25, 6168), (31, 6222), (47, 6318), (59, 6375), (63, 6402), (65, 6408), (103, 6543), (105, 6558), (110, 6582), (113, 6597), (125, 6684), (127, 6702), (128, 6708), (152, 6792), (160, 6837), (174, 6900), (179, 6921), (188, 6945), (191, 6954), (201, 6990), (220, 7131), (221, 7140), (222, 7158),

Gene: TpudiCK\_19 Start: 9853, Stop: 11016, Start Num: 9

Candidate Starts for TpudiCK\_19:

(Start: 9 @9853 has 106 MA's), (25, 9937), (40, 10057), (41, 10060), (60, 10156), (63, 10177), (74, 10225), (89, 10270), (98, 10300), (105, 10333), (113, 10372), (128, 10483), (129, 10486), (131, 10492), (144, 10546), (151, 10573), (156, 10600), (160, 10618), (173, 10675), (177, 10693), (181, 10714), (190, 10747), (213, 10876), (220, 10930), (223, 10969),

Gene: Trax\_16 Start: 9483, Stop: 10430, Start Num: 9

Candidate Starts for Trax\_16:

(Start: 9 @9483 has 106 MA's), (18, 9534), (43, 9705), (47, 9726), (110, 9990), (116, 10023), (123, 10080), (129, 10122), (147, 10191),

Gene: TriFive\_9 Start: 6200, Stop: 7360, Start Num: 8

Candidate Starts for TriFive\_9:

(Start: 8 @6200 has 212 MA's), (21, 6278), (25, 6293), (31, 6347), (32, 6353), (41, 6410), (47, 6443), (59, 6500), (65, 6533), (67, 6542), (94, 6638), (103, 6668), (127, 6827), (152, 6917), (174, 7025), (179, 7046), (188, 7070), (218, 7238), (220, 7259), (225, 7304),

Gene: Triste\_10 Start: 7218, Stop: 8288, Start Num: 8

Candidate Starts for Triste\_10:

(Start: 8 @7218 has 212 MA's), (101, 7710), (108, 7746), (129, 7884), (154, 7977), (160, 8007), (172, 8061),

Gene: Triumph\_12 Start: 7111, Stop: 8184, Start Num: 8

Candidate Starts for Triumph\_12:

(Start: 8 @7111 has 212 MA's), (64, 7462), (160, 7900), (173, 7957), (185, 7999), (186, 8005), (201, 8053),

Gene: TrvxScott\_9 Start: 7053, Stop: 8111, Start Num: 8

Candidate Starts for TrvxScott\_9:

(Start: 8 @7053 has 212 MA's), (64, 7383), (83, 7461), (103, 7527), (173, 7881),

Gene: TuanPN\_10 Start: 7224, Stop: 8297, Start Num: 8

Candidate Starts for TuanPN\_10:

(Start: 8 @7224 has 212 MA's), (101, 7716), (104, 7731), (129, 7890), (154, 7983), (160, 8013), (172, 8067), (206, 8205),

Gene: Tuck\_8 Start: 7878, Stop: 8813, Start Num: 8

Candidate Starts for Tuck\_8:

(Start: 8 @7878 has 212 MA's), (18, 7929), (32, 8022), (46, 8112), (71, 8229), (94, 8313), (105, 8358), (125, 8478), (134, 8520), (139, 8538), (158, 8616), (166, 8664), (172, 8685), (179, 8715), (192, 8763), (201, 8796),

Gene: Turab\_7 Start: 6835, Stop: 7782, Start Num: 8

Candidate Starts for Turab\_7:

(Start: 8 @6835 has 212 MA's), (17, 6880), (18, 6886), (32, 6979), (38, 7027), (46, 7069), (66, 7168), (71, 7186), (74, 7207), (80, 7228), (105, 7315), (125, 7435), (134, 7477), (158, 7573), (165, 7618), (168, 7630), (172, 7642), (179, 7672), (192, 7720), (201, 7753),

Gene: Tutumahutu\_7 Start: 6871, Stop: 7818, Start Num: 8

Candidate Starts for Tutumahutu\_7:

(Start: 8 @6871 has 212 MA's), (18, 6922), (25, 6955), (46, 7105), (71, 7222), (105, 7351), (109, 7372), (125, 7471), (126, 7480), (139, 7531), (158, 7609), (165, 7654), (166, 7657), (172, 7678), (179, 7708), (182, 7723), (201, 7789),

Gene: Tweety19\_7 Start: 5953, Stop: 6894, Start Num: 8

Candidate Starts for Tweety19\_7:

(Start: 8 @5953 has 212 MA's), (18, 6010), (31, 6097), (41, 6166), (46, 6193), (53, 6229), (58, 6250), (63, 6283), (71, 6310), (80, 6352), (99, 6415), (105, 6442), (110, 6466), (129, 6589), (142, 6643), (165, 6745), (172, 6769), (192, 6847), (201, 6874),

Gene: TyDawg\_18 Start: 9854, Stop: 11017, Start Num: 9

Candidate Starts for TyDawg\_18:

(Start: 9 @9854 has 106 MA's), (25, 9938), (40, 10058), (41, 10061), (60, 10157), (63, 10178), (74, 10226), (89, 10271), (98, 10301), (105, 10334), (113, 10373), (128, 10484), (129, 10487), (131, 10493), (144, 10547), (151, 10574), (156, 10601), (160, 10619), (173, 10676), (177, 10694), (181, 10715), (190, 10748), (213, 10877), (220, 10931), (223, 10970),

Gene: Tyson\_8 Start: 6084, Stop: 7235, Start Num: 9

Candidate Starts for Tyson\_8:

(Start: 9 @6084 has 106 MA's), (11, 6099), (17, 6129), (25, 6168), (31, 6222), (32, 6228), (47, 6318), (59, 6375), (63, 6402), (65, 6408), (105, 6558), (111, 6585), (127, 6702), (140, 6747), (160, 6837), (167, 6876), (173, 6894), (174, 6900), (179, 6921), (201, 6990), (220, 7131), (225, 7176),

Gene: UPIE\_8 Start: 6082, Stop: 7233, Start Num: 9

Candidate Starts for UPIE\_8:

(Start: 9 @6082 has 106 MA's), (11, 6097), (17, 6127), (25, 6166), (31, 6220), (32, 6226), (47, 6316), (59, 6373), (63, 6400), (65, 6406), (105, 6556), (111, 6583), (127, 6700), (140, 6745), (160, 6835), (167, 6874), (173, 6892), (174, 6898), (179, 6919), (201, 6988), (220, 7129), (225, 7174),

Gene: Underpass\_8 Start: 6070, Stop: 7218, Start Num: 9

Candidate Starts for Underpass\_8:

(Start: 9 @6070 has 106 MA's), (11, 6085), (25, 6154), (31, 6208), (47, 6304), (63, 6388), (94, 6499), (103, 6529), (105, 6544), (110, 6568), (113, 6583), (125, 6670), (127, 6688), (128, 6694), (152, 6778), (160, 6823), (174, 6886), (179, 6907), (191, 6940), (201, 6976), (211, 7051), (220, 7117), (222, 7144),

Gene: Unstoppable\_10 Start: 7251, Stop: 8315, Start Num: 8

Candidate Starts for Unstoppable\_10:

(Start: 8 @7251 has 212 MA's), (64, 7596), (101, 7737), (104, 7752), (132, 7920), (141, 7950), (154, 8004), (160, 8034), (172, 8088), (206, 8223),

Gene: Urza\_10 Start: 7450, Stop: 8523, Start Num: 8

Candidate Starts for Urza\_10:

(1, 7414), (Start: 8 @7450 has 212 MA's), (21, 7528), (64, 7804), (88, 7900), (103, 7948), (111, 7990), (130, 8122), (136, 8146), (141, 8158), (160, 8245), (161, 8251), (173, 8302), (179, 8329), (201, 8398),

Gene: UtzChips\_6 Start: 6055, Stop: 7023, Start Num: 8

Candidate Starts for UtzChips\_6:

(Start: 8 @6055 has 212 MA's), (13, 6088), (51, 6316), (63, 6385), (94, 6502), (105, 6547), (138, 6724), (142, 6748), (161, 6826), (163, 6835), (173, 6877), (202, 6994),

Gene: VResidence\_7 Start: 6896, Stop: 7843, Start Num: 8

Candidate Starts for VResidence\_7:

(Start: 8 @6896 has 212 MA's), (17, 6941), (18, 6947), (41, 7103), (53, 7166), (71, 7247), (94, 7331), (105, 7376), (109, 7397), (125, 7496), (126, 7505), (139, 7556), (166, 7682), (172, 7703), (177, 7724), (179, 7733), (182, 7748), (201, 7814),

Gene: VanLee\_8 Start: 5920, Stop: 6837, Start Num: 9

Candidate Starts for VanLee\_8:

(Start: 9 @5920 has 106 MA's), (12, 5947), (21, 5989), (22, 5992), (25, 6004), (31, 6058), (46, 6145), (48, 6157), (55, 6187), (64, 6238), (70, 6259), (96, 6358), (105, 6397), (130, 6550), (134, 6562), (157, 6658), (163, 6688), (170, 6721),

Gene: Vanseggelen\_13 Start: 6978, Stop: 8024, Start Num: 3

Candidate Starts for Vanseggelen\_13:

(3, 6978), (18, 7050), (129, 7629), (154, 7722), (167, 7794), (179, 7839), (195, 7887), (201, 7908), (214, 8004),

Gene: Verabelle\_11 Start: 7343, Stop: 8371, Start Num: 8

Candidate Starts for Verabelle\_11:

(Start: 8 @7343 has 212 MA's), (18, 7397), (51, 7601), (55, 7619), (129, 7976), (154, 8069), (163, 8117), (167, 8141), (179, 8186), (201, 8255), (208, 8303), (214, 8351),

Gene: Verse\_10 Start: 7406, Stop: 8488, Start Num: 8

Candidate Starts for Verse\_10:

(Start: 8 @7406 has 212 MA's), (18, 7463), (129, 8066), (167, 8231), (173, 8249), (179, 8276), (183, 8285),

Gene: Vetrix\_8 Start: 6070, Stop: 7218, Start Num: 9

Candidate Starts for Vetrix\_8:

(Start: 9 @6070 has 106 MA's), (11, 6085), (25, 6154), (31, 6208), (47, 6304), (63, 6388), (94, 6499), (103, 6529), (105, 6544), (110, 6568), (113, 6583), (125, 6670), (127, 6688), (128, 6694), (152, 6778), (160, 6823), (174, 6886), (179, 6907), (191, 6940), (201, 6976), (211, 7051), (220, 7117), (222, 7144),

Gene: VieEnRose\_10 Start: 7520, Stop: 8593, Start Num: 8

Candidate Starts for VieEnRose\_10:

(1, 7484), (Start: 8 @7520 has 212 MA's), (21, 7598), (64, 7874), (88, 7970), (130, 8192), (136, 8216), (139, 8222), (141, 8228), (160, 8315), (161, 8321), (173, 8372), (179, 8399), (201, 8468),

Gene: VroomVroom\_6 Start: 5167, Stop: 6108, Start Num: 8

Candidate Starts for VroomVroom\_6:

(Start: 8 @5167 has 212 MA's), (18, 5218), (38, 5359), (46, 5401), (58, 5458), (63, 5491), (70, 5515), (71, 5518), (105, 5647), (109, 5668), (126, 5776), (134, 5809), (148, 5860), (152, 5875), (165, 5947), (172, 5971), (177, 5992), (192, 6049), (201, 6082),

Gene: Wamburgxpress\_8 Start: 6084, Stop: 7235, Start Num: 9

Candidate Starts for Wamburgxpress\_8:

(Start: 9 @6084 has 106 MA's), (11, 6099), (17, 6129), (25, 6168), (31, 6222), (32, 6228), (47, 6318), (59, 6375), (63, 6402), (65, 6408), (105, 6558), (111, 6585), (127, 6702), (140, 6747), (160, 6837), (167, 6876), (173, 6894), (174, 6900), (179, 6921), (201, 6990), (220, 7131), (225, 7176),

Gene: Warda\_7 Start: 6817, Stop: 7764, Start Num: 8

Candidate Starts for Warda\_7:

(Start: 8 @6817 has 212 MA's), (18, 6868), (25, 6901), (46, 7051), (63, 7141), (71, 7168), (105, 7297), (109, 7318), (125, 7417), (126, 7426), (139, 7477), (158, 7555), (165, 7600), (166, 7603), (172, 7624), (179, 7654), (194, 7711), (201, 7735),

Gene: Werner\_10 Start: 7221, Stop: 8294, Start Num: 8

Candidate Starts for Werner\_10:

(Start: 8 @7221 has 212 MA's), (101, 7713), (104, 7728), (152, 7968), (154, 7980), (160, 8010), (172, 8064), (206, 8202),

Gene: Whatever\_10 Start: 7221, Stop: 8294, Start Num: 8

Candidate Starts for Whatever\_10:

(Start: 8 @7221 has 212 MA's), (101, 7713), (104, 7728), (152, 7968), (154, 7980), (160, 8010), (172, 8064), (206, 8202),

Gene: Whirlwind\_10 Start: 6194, Stop: 7354, Start Num: 8

Candidate Starts for Whirlwind\_10:

(Start: 8 @6194 has 212 MA's), (21, 6272), (25, 6287), (31, 6341), (32, 6347), (41, 6404), (47, 6437), (59, 6494), (65, 6527), (67, 6536), (103, 6662), (121, 6773), (127, 6821), (152, 6911), (174, 7019), (179, 7040), (220, 7253), (222, 7280), (225, 7298),

Gene: Wigglewiggles\_8 Start: 6103, Stop: 7251, Start Num: 9

Candidate Starts for Wigglewiggles\_8:

(Start: 9 @6103 has 106 MA's), (11, 6118), (25, 6187), (31, 6241), (47, 6337), (63, 6421), (94, 6532), (103, 6562), (105, 6577), (110, 6601), (113, 6616), (125, 6703), (127, 6721), (128, 6727), (152, 6811), (160, 6856), (174, 6919), (179, 6940), (191, 6973), (201, 7009), (211, 7084), (220, 7150), (222, 7177),

Gene: Wildcat\_30 Start: 12954, Stop: 14132, Start Num: 9

Candidate Starts for Wildcat\_30:

(Start: 9 @12954 has 106 MA's), (13, 12984), (18, 13005), (20, 13020), (25, 13038), (31, 13092), (32, 13098), (50, 13209), (54, 13227), (58, 13245), (70, 13302), (77, 13335), (111, 13467), (113, 13479), (115, 13494), (122, 13542), (133, 13605), (144, 13653), (151, 13680), (161, 13728), (164, 13740), (179, 13806), (207, 13935), (209, 13941), (211, 13971), (224, 14079), (230, 14127),

Gene: Wilder\_8 Start: 6070, Stop: 7218, Start Num: 9

Candidate Starts for Wilder\_8:

(Start: 9 @6070 has 106 MA's), (11, 6085), (25, 6154), (31, 6208), (47, 6304), (63, 6388), (94, 6499), (103, 6529), (105, 6544), (110, 6568), (113, 6583), (125, 6670), (127, 6688), (128, 6694), (152, 6778), (160, 6823), (174, 6886), (179, 6907), (191, 6940), (201, 6976), (211, 7051), (220, 7117), (222, 7144),

Gene: Wildwest\_8 Start: 7740, Stop: 8687, Start Num: 8

Candidate Starts for Wildwest\_8:

(Start: 8 @7740 has 212 MA's), (17, 7785), (18, 7791), (46, 7974), (71, 8091), (94, 8175), (105, 8220), (109, 8241), (125, 8340), (126, 8349), (139, 8400), (166, 8526), (172, 8547), (179, 8577), (182, 8592), (191, 8622), (201, 8658),

Gene: Winky\_8 Start: 6070, Stop: 7218, Start Num: 9

Candidate Starts for Winky\_8:

(Start: 9 @6070 has 106 MA's), (11, 6085), (25, 6154), (31, 6208), (47, 6304), (63, 6388), (94, 6499), (103, 6529), (105, 6544), (110, 6568), (113, 6583), (125, 6670), (127, 6688), (128, 6694), (152, 6778), (160, 6823), (174, 6886), (179, 6907), (191, 6940), (201, 6976), (211, 7051), (220, 7117), (222, 7144),

Gene: Wyatt2\_8 Start: 6084, Stop: 7235, Start Num: 9

Candidate Starts for Wyatt2\_8:

(Start: 9 @6084 has 106 MA's), (11, 6099), (17, 6129), (25, 6168), (31, 6222), (32, 6228), (47, 6318), (59, 6375), (63, 6402), (65, 6408), (105, 6558), (111, 6585), (127, 6702), (140, 6747), (160, 6837), (167, 6876), (173, 6894), (174, 6900), (179, 6921), (201, 6990), (220, 7131), (225, 7176),

Gene: Yang\_7 Start: 6933, Stop: 7880, Start Num: 8

Candidate Starts for Yang\_7:

(Start: 8 @6933 has 212 MA's), (18, 6984), (47, 7173), (72, 7293), (105, 7413), (110, 7437), (111, 7440), (134, 7575), (139, 7593), (165, 7716), (166, 7719), (172, 7740), (179, 7770), (182, 7785), (192, 7818), (201, 7851),

Gene: Yasdni1\_10 Start: 7220, Stop: 8293, Start Num: 8

Candidate Starts for Yasdni1\_10:

(Start: 8 @7220 has 212 MA's), (101, 7712), (104, 7727), (129, 7886), (154, 7979), (160, 8009), (172, 8063), (206, 8201),

Gene: YesChef\_7 Start: 6871, Stop: 7818, Start Num: 8

Candidate Starts for YesChef\_7:

(Start: 8 @6871 has 212 MA's), (18, 6922), (25, 6955), (46, 7105), (71, 7222), (105, 7351), (109, 7372), (125, 7471), (126, 7480), (139, 7531), (158, 7609), (165, 7654), (166, 7657), (172, 7678), (179, 7708), (182, 7723), (201, 7789),

Gene: Yosif\_11 Start: 7716, Stop: 8744, Start Num: 8

Candidate Starts for Yosif\_11:

(Start: 8 @7716 has 212 MA's), (18, 7770), (55, 7992), (129, 8349), (154, 8442), (167, 8514), (173, 8532), (179, 8559), (205, 8664), (214, 8724),

Gene: Zainub\_12 Start: 7584, Stop: 8654, Start Num: 8

Candidate Starts for Zainub\_12:

(Start: 8 @7584 has 212 MA's), (24, 7674), (64, 7914), (101, 8067), (139, 8274), (141, 8280), (154, 8334), (168, 8409), (172, 8421),

Gene: Zakai\_8 Start: 6058, Stop: 7206, Start Num: 9

Candidate Starts for Zakai\_8:

(Start: 9 @6058 has 106 MA's), (11, 6073), (25, 6142), (31, 6196), (47, 6292), (63, 6376), (94, 6487), (103, 6517), (105, 6532), (110, 6556), (113, 6571), (125, 6658), (127, 6676), (128, 6682), (152, 6766), (160, 6811), (174, 6874), (179, 6895), (191, 6928), (201, 6964), (211, 7039), (220, 7105), (222, 7132),

Gene: ZamZam\_10 Start: 7307, Stop: 8386, Start Num: 8

Candidate Starts for ZamZam\_10:

(Start: 8 @7307 has 212 MA's), (18, 7361), (40, 7535), (51, 7589), (83, 7733), (129, 7964), (167, 8129), (173, 8147), (179, 8174), (185, 8189), (216, 8354),

Gene: Zaria\_8 Start: 6085, Stop: 7236, Start Num: 9

Candidate Starts for Zaria\_8:

(Start: 9 @6085 has 106 MA's), (11, 6100), (17, 6130), (25, 6169), (31, 6223), (32, 6229), (47, 6319), (59, 6376), (63, 6403), (65, 6409), (105, 6559), (111, 6586), (127, 6703), (140, 6748), (160, 6838), (167, 6877), (173, 6895), (174, 6901), (179, 6922), (201, 6991), (220, 7132), (225, 7177),

Gene: Zemlya\_11 Start: 7220, Stop: 8305, Start Num: 8

Candidate Starts for Zemlya\_11:

(Start: 8 @7220 has 212 MA's), (101, 7724), (104, 7739), (154, 7991), (160, 8021), (179, 8105), (206, 8213),

Gene: Zeta1847\_6 Start: 5151, Stop: 6122, Start Num: 7

Candidate Starts for Zeta1847\_6:

(Start: 7 @5151 has 1 MA's), (19, 5214), (29, 5271), (51, 5418), (63, 5487), (111, 5676), (112, 5682), (113, 5688), (125, 5769), (126, 5778), (134, 5811), (161, 5928), (173, 5979), (178, 6003), (199, 6081),

Gene: ZhongYanYuan\_7 Start: 5899, Stop: 7047, Start Num: 9

Candidate Starts for ZhongYanYuan\_7:

(Start: 9 @5899 has 106 MA's), (11, 5914), (17, 5944), (25, 5983), (31, 6037), (47, 6133), (63, 6217), (103, 6358), (105, 6373), (110, 6397), (113, 6412), (125, 6499), (127, 6517), (128, 6523), (152, 6607), (160, 6652), (174, 6715), (179, 6736), (191, 6769), (201, 6805), (220, 6946), (222, 6973),

Gene: phiCAM\_11 Start: 9127, Stop: 10152, Start Num: 18

Candidate Starts for phiCAM\_11:

(Start: 8 @9070 has 212 MA's), (18, 9127), (88, 9517), (129, 9730), (167, 9895), (173, 9913), (179, 9940), (201, 10009), (212, 10102), (216, 10120),

Gene: phiHau3\_12 Start: 7280, Stop: 8347, Start Num: 8

Candidate Starts for phiHau3\_12:

(Start: 8 @7280 has 212 MA's), (10, 7301), (31, 7427), (32, 7433), (47, 7526), (64, 7610), (70, 7631), (76, 7658), (101, 7763), (141, 7976), (160, 8063), (168, 8105), (173, 8120),