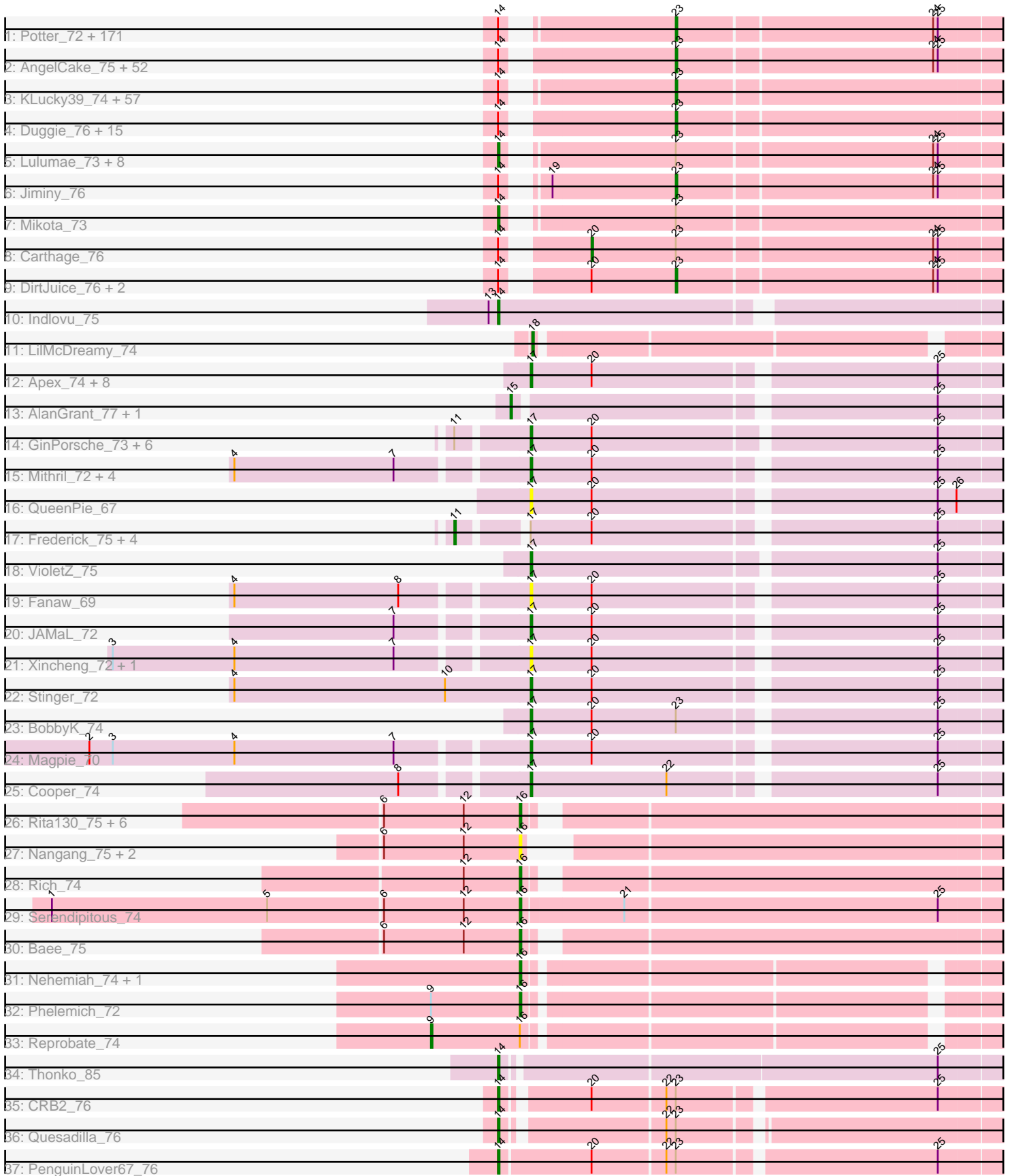


Pham 306026



Note: Tracks are now grouped by subcluster and scaled. Switching in subcluster is indicated by changes in track color. Track scale is now set by default to display the region 30 bp upstream of start 1 to 30 bp downstream of the last possible start. If this default region is judged to be packed too tightly with annotated starts, the track will be further scaled to only show that region of the ORF with annotated starts. This action will be indicated by adding "Zoomed" to the title. For starts, yellow indicates the location of called starts comprised solely of Glimmer/GeneMark auto-annotations, green indicates the location of called starts with at least 1 manual gene annotation.

Pham 306026 Report

This analysis was run 06/20/26 on database version 651.

Pham number 306026 has 375 members, 46 are drafts.

Phages represented in each track:

- Track 1 : Potter_72, Iridessa_78, FleetyMac_79, LeeLot_75, Taraxa_76, ElvisPhasley_77, GreenChile_75, PinheadLarry_75, Tooj_73, TyrionL_76, PhatLouie_78, Anderson_78, ProfessorX_74, Kahve_77, Schueller_74, GeneCoco_77, Mana_74, EmGer13_76, RedRaider89_75, Hekos_74, Mecca_76, Kwadwo_75, Adriana_76, Mesh1_77, OneBrain_79, Lego3393_74, Scrick_75, Kimbrough_77, Olak_75, Buckeye_76, FremontTroll_74, Craff_78, MelsMeow_75, Scoot17C_77, Durga_78, Nathan_77, Matalotodo_75, TomBombadil_76, Megatron_77, Cobra_76, Inverness_74, Tomlarah_77, Caspiboi_75, Zelda_76, OliverWalter_76, Beaglebox_73, Lulwa_73, LasagnaCat_77, Basato_75, Eremos_75, Katniss_78, Dice_75, Cher_76, CharlieGBrown_74, Brilliant_79, Telesworld_74, Karn_76, SassyCat97_74, Pacifista_75, Gwilliam_77, Swiphy_78, RedMaple_76, Phunky_74, Banjo_73, Squiggle_75, HSavage_74, HenryJackson_77, Piglet_0076, Giraffe_76, Fozzie_74, FugateOSU_76, Vaishali24_77, Phamished_76, Chunky_76, Omniscient_77, Khan1_76, ThreeOh3D2_78, NiaNia_77, FluffyNinja_77, Windsor_76, Triad_77, Yoshand_77, LeiMonet_79, Nova1_76, ShiVal_74, YouGoGlencoco_76, Mutante_77, Colbert_74, Serendipity_76, Cornbread_75, Placalicious_75, TallGrassMM_75, HighStump_77, Cosmolli16_78, Frankicide_75, Labeouficaum_76, Mosaic_74, Phleuron_74, Flake_75, Phareon_74, KlimbOn_75, Haimas_74, Skippy_77, Sophia_74, Surely_76, DuchessDung_74, Etaye_75, Daka_78, Childish_76, DaddyDaniels_79, Crownjwl_74, Newman_74, Trypo_77, Burr_76, Hocus_74, BlacksBerry_76, Zaider_77, JakeO_77, DoOn_80, Valjean_75, Morty_77, Roscoe_76, MrPhizzler_79, Antonia_75, Weher20_73, Derpp_76, TooFast2Furius_75, ABU_75, Schadenfreude_76, Soile_77, Hamish_73, Pherdinand_77, Mulan_75, Prickles_77, Soto_73, Vista_75, Riverton_75, Orwigg_75, DoesntMatter_73, Toni_76, Fang_77, Melc17_73, AbsoluteMadLad_75, Pipsqueak_73, Mesmerelda_75, Keitherie_79, Chipette_75, Chuni_77, Vivaldi_76, Swish_77, Gareth_76, Gwennie1_75, Serpentine_0077, Spartan300_75, Wallhey_77, CheetO_75, Larson_78, Jillium_77, KingTut_67, DelRivs_74, Slatt_76, Waterdiva_77, Jesabah_78, Maru_76, Selr12_77, Rimu_76, Riggan_77, Bishoperium_76, Olive_74, Mcshane_75, BlackStallion_77, AltPhacts_74
- Track 2 : AngelCake_75, Dingo_73, Mag7_74, CampRoach_77, Lopsy_73, Kailash_74, QueenBeane_76, Chute_76, Happabalu_74, Puhltonio_74, Samaymay_76, Haleema_75, LemonSlice_76, JDog_75, HogWash_76, Xavier_76, Veritas_75, Plata_75, Solosis_74, Held_74, Hartsy_75, Pinkman_76, DonSanchon_72, Jiraiya_77, Phergie_76, Altwerkus_75, MRabcd_76, Fringe_80, Coletti_79, Chorkpop_77, Lehmann_78, BatteryCK_74, Daffy_75, Dati_73, Cornobble_74, Murdoc_73, Virgeve_74, PhrankReynolds_75, CamL_76, Aelin_75,

Emiris_77, MichaelPhcott_74, PhenghisKhan_76, Manad_75, Morgushi_74, Timmi_75, True_74, MitKao_76, Freya_73, Thunderbird_76, Lasso_75, UncleHowie_73, Inchworm_77

- Track 3 : KLucky39_74, Vaticameos_73, Badfish_77, Hertubise_76, Kwksand96_77, SirBeauregard_77, Gophee_76, Longacauda_77, Sheila_72, Usavi_77, Oosterbaan_76, Sigman_76, Legolas_77, Aleia_75, KingVeVeVe_74, Bluephacebaby_75, FriarPreacher_74, EmpTee_75, PhrodoBaggins_78, IsaacEli_78, Thora_75, LuckyMarjie_73, Chaelin_77, Roliet_73, Harvey_73, JacAttac_76, Charles1_77, Chah_78, Plmatters_74, Megamind20_76, PhatCats2014_77, Iridoclysis_75, Simielle_75, BlueHusk_77, Pops_74, ImtiyazSitla_77, JangoPhett_74, Nyala_75, Apizium_75, Gyarad_0075, Dione_74, Kikipoo_78, Grand2040_74, Virapocalypse_77, Kloppinator_76, Maskar_77, Squid_75, MiniBoss_73, Zonia_77, Andre_78, SDcharge11_75, Nacho_0079, Nicole21_77, Hetaeria_76, Eugenia_77, UAch1_77, Ashraf_77, BoogieWoogie_75
- Track 4 : Duggie_76, PallasAthena_77, Cannibal_77, Lumine_77, Podrick_75, Numberten_75, SallyH_78, Orfeu_75, Aonishiki_76, SilverBell_77, ShadowBud_76, Struggle_76, Magic8_75, Quisquillae_78, Ricotta_76, Phipps_75
- Track 5 : Lulumae_73, Orion_76, OSmaximus_76, PG1_76, Vortex_75, Roy17_74, Doddsville_74, Boehler_75, Oline_75
- Track 6 : Jiminy_76
- Track 7 : Mikota_73
- Track 8 : Carthage_76
- Track 9 : DirtJuice_76, Horchata_73, LostAndPhound_75
- Track 10 : Indlovu_75
- Track 11 : LilMcDreamy_74
- Track 12 : Apex_74, Heath_73, Prince_72, Mudslide_73, Zemanar_73, JoyceMaria_73, Hangman_74, Austelle_73, Hydro_74
- Track 13 : AlanGrant_77, Vincenzo_76
- Track 14 : GinPorsche_73, Poster_71, Ahwei_71, LittleDigger_72, Hally898_71, ChrisnMich_73, Lambano_71
- Track 15 : Mithril_72, Lolalove_74, Waleliano_72, BrownCNA_74, RawrgerThat_73
- Track 16 : QueenPie_67
- Track 17 : Frederick_75, Epah_71, Antihero_71, Nanao_72, Renkei_72
- Track 18 : VioletZ_75
- Track 19 : Fanaw_69
- Track 20 : JAMaL_72
- Track 21 : Xincheng_72, JaguarMi_73
- Track 22 : Stinger_72
- Track 23 : BobbyK_74
- Track 24 : Magpie_70
- Track 25 : Cooper_74
- Track 26 : Rita130_75, EastView9101_75, Donny_77, Suigeneris_77, SirJeffery_74, Reccee_77, Acadian_76
- Track 27 : Nangang_75, Shenyu_76, DigitDog_76
- Track 28 : Rich_74
- Track 29 : Serendipitous_74
- Track 30 : Bae_75
- Track 31 : Nehemiah_74, Mysterious_74
- Track 32 : Phelemich_72
- Track 33 : Reprobate_74
- Track 34 : Thonko_85
- Track 35 : CRB2_76
- Track 36 : Quesadilla_76

- Track 37 : PenguinLover67_76

Summary of Final Annotations (See graph section above for start numbers):

The start number called the most often in the published annotations is 23, it was called in 275 of the 329 non-draft genes in the pham.

Genes that call this "Most Annotated" start:

- ABU_75, AbsoluteMadLad_75, Adriana_76, Aelin_75, Aleia_75, AltPhacts_74, Altwerkus_75, Anderson_78, Andre_78, AngelCake_75, Antonia_75, Aonishiki_76, Apizium_75, Ashraf_77, Badfish_77, Banjo_73, Basato_75, BatteryCK_74, Beaglebox_73, Bishoperium_76, BlackStallion_77, BlacksBerry_76, BlueHusk_77, Bluephacebaby_75, BoogieWoogie_75, Brilliant_79, Buckeye_76, Burr_76, CamL_76, CampRoach_77, Cannibal_77, Caspiboi_75, Chaelin_77, Chah_78, Charles1_77, CharlieGBrown_74, CheetO_75, Cher_76, Childish_76, Chipette_75, Chorkpop_77, Chuni_77, Chunky_76, Chute_76, Cobra_76, Colbert_74, Coletti_79, Cornbread_75, Cornobble_74, Cosmolli16_78, Craff_78, Crownjwl_74, DaddyDaniels_79, Daffy_75, Daka_78, Dati_73, DelRivs_74, Derpp_76, Dice_75, Dingo_73, Dione_74, DirtJuice_76, DoesntMatter_73, DoIOn_80, DonSanchon_72, DuchessDung_74, Duggie_76, Durga_78, ElvisPhasley_77, EmGer13_76, Emiris_77, EmpTee_75, Eremos_75, Etaye_75, Eugenia_77, Fang_77, Flake_75, FleetyMac_79, FluffyNinja_77, Fozzie_74, Frankicide_75, FremontTroll_74, Freya_73, FriarPreacher_74, Fringe_80, FugateOSU_76, Gareth_76, GeneCoco_77, Giraffe_76, Gophee_76, Grand2040_74, GreenChile_75, Gwennie1_75, Gwilliam_77, Gyarad_0075, HSavage_74, Haimas_74, Haleema_75, Hamish_73, Happabalu_74, Hartsy_75, Harvey_73, Hekos_74, Held_74, HenryJackson_77, Hertubise_76, Hetaeria_76, HighStump_77, Hocus_74, HogWash_76, Horchata_73, ImtiyazSitla_77, Inchworm_77, Inverness_74, Iridessa_78, Iridoclysis_75, IsaacEli_78, JDog_75, JacAttac_76, JakeO_77, JangoPhett_74, Jesabah_78, Jillium_77, Jiminy_76, Jiraiya_77, KLucky39_74, Kahve_77, Kailash_74, Karn_76, Katniss_78, Keitherie_79, Khan1_76, Kikipoo_78, Kimbrough_77, KingTut_67, KingVeVeVe_74, KlimbOn_75, Kloppinator_76, Kwadwo_75, Kwksand96_77, Labeouficaum_76, Larson_78, LasagnaCat_77, Lasso_75, LeeLot_75, Lego3393_74, Legolas_77, Lehmann_78, LeiMonet_79, LemonSlice_76, Longacauda_77, Lopsy_73, LostAndPhound_75, LuckyMarjie_73, Lulwa_73, Lumine_77, MRabcd_76, Mag7_74, Magic8_75, Mana_74, Manad_75, Maru_76, Maskar_77, Matalotodo_75, Mcshane_75, Mecca_76, Megamind20_76, Megatron_77, Melc17_73, MelsMeow_75, Mesh1_77, Mesmerelda_75, MichaelPhcott_74, MiniBoss_73, MitKao_76, Morgushi_74, Morty_77, Mosaic_74, MrPhizzler_79, Mulan_75, Murdoc_73, Mutante_77, Nacho_0079, Nathan_77, Newman_74, NiaNia_77, Nicole21_77, Nova1_76, Numberten_75, Nyala_75, Olak_75, Olive_74, OliverWalter_76, Omniscient_77, OneBrain_79, Oosterbaan_76, Orfeu_75, Orwigg_75, Pacifista_75, PallasAthena_77, Phamished_76, Phareon_74, PhatCats2014_77, PhatLouie_78, PhenghisKhan_76, Pherdinand_77, Phergie_76, Phipps_75, Phleuron_74, PhrankReynolds_75, PhrodoBaggins_78, Phunky_74, Piglet_0076, PinheadLarry_75, Pinkman_76, Pipsqueak_73, Placalicious_75, Plata_75, Plmatters_74, Podrick_75, Pops_74, Potter_72, Prickles_77, ProfessorX_74, Puhltonio_74, QueenBeane_76, Quisquilliae_78, RedMaple_76, RedRaider89_75, Ricotta_76, Riggan_77, Rimu_76, Riverton_75, Roliet_73, Roscoe_76, SDcharge11_75, SallyH_78, Samaymay_76, SassyCat97_74,

Schadenfreude_76, Schueller_74, Scoot17C_77, Scrick_75, Selr12_77, Serendipity_76, Serpentine_0077, ShadowBud_76, Sheila_72, ShiVal_74, Sigman_76, SilverBell_77, Simielle_75, SirBeauregard_77, Skippy_77, Slatt_76, Soile_77, Solosis_74, Sophia_74, Soto_73, Spartan300_75, Squid_75, Squiggle_75, Struggle_76, Surely_76, Swiphy_78, Swish_77, TallGrassMM_75, Taraxa_76, Telesworld_74, Thora_75, ThreeOh3D2_78, Thunderbird_76, Timmi_75, TomBombadil_76, Tomlarah_77, Toni_76, TooFast2Furius_75, Tooj_73, Triad_77, True_74, Trypo_77, TyrionL_76, UAch1_77, UncleHowie_73, Usavi_77, Vaishali24_77, Valjean_75, Vaticameos_73, Veritas_75, Virapocalypse_77, Virgeve_74, Vista_75, Vivaldi_76, Wallhey_77, Waterdiva_77, Weher20_73, Windsor_76, Xavier_76, Yoshand_77, YouGoGlencoco_76, Zaider_77, Zelda_76, Zonia_77,

Genes that have the "Most Annotated" start but do not call it:

- BobbyK_74, Boehler_75, CRB2_76, Carthage_76, Doddsville_74, Lulumae_73, Mikota_73, OSmaximus_76, Oline_75, Orion_76, PG1_76, PenguinLover67_76, Quesadilla_76, Roy17_74, Vortex_75,

Genes that do not have the "Most Annotated" start:

- Acadian_76, Ahwei_71, AlanGrant_77, Antihero_71, Apex_74, Austelle_73, Bae_75, BrownCNA_74, ChrisnMich_73, Cooper_74, DigitDog_76, Donny_77, EastView9101_75, Epah_71, Fanaw_69, Frederick_75, GinPorsche_73, Hally898_71, Hangman_74, Heath_73, Hydro_74, Indlovu_75, JAMaL_72, JaguarMi_73, JoyceMaria_73, Lambano_71, LilMcDreamy_74, LittleDigger_72, Lolalove_74, Magpie_70, Mithril_72, Mudslide_73, Mysterious_74, Nanao_72, Nangang_75, Nehemiah_74, Phelemich_72, Poster_71, Prince_72, QueenPie_67, RawrgerThat_73, Reccee_77, Renkei_72, Reprobate_74, Rich_74, Rita130_75, Serendipitous_74, Shenyu_76, SirJeffery_74, Stinger_72, Suigeneris_77, Thonko_85, Vincenzo_76, VioletZ_75, Waleliano_72, Xincheng_72, Zemanar_73,

Summary by start number:

Start 9:

- Found in 2 of 375 (0.5%) of genes in pham
- Manual Annotations of this start: 1 of 329
- Called 50.0% of time when present
- Phage (with cluster) where this start called: Reprobate_74 (B5),

Start 11:

- Found in 12 of 375 (3.2%) of genes in pham
- Manual Annotations of this start: 2 of 329
- Called 41.7% of time when present
- Phage (with cluster) where this start called: Antihero_71 (B4), Epah_71 (B4), Frederick_75 (B4), Nanao_72 (B4), Renkei_72 (B4),

Start 14:

- Found in 319 of 375 (85.1%) of genes in pham
- Manual Annotations of this start: 15 of 329
- Called 4.7% of time when present
- Phage (with cluster) where this start called: Boehler_75 (B1), CRB2_76 (B9), Doddsville_74 (B1), Indlovu_75 (B11), Lulumae_73 (B1), Mikota_73 (B1), OSmaximus_76 (B1), Oline_75 (B1), Orion_76 (B1), PG1_76 (B1), PenguinLover67_76 (B9), Quesadilla_76 (B9), Roy17_74 (B1), Thonko_85 (B8),

Vortex_75 (B1),

Start 15:

- Found in 2 of 375 (0.5%) of genes in pham
- Manual Annotations of this start: 2 of 329
- Called 100.0% of time when present
- Phage (with cluster) where this start called: AlanGrant_77 (B4), Vincenzo_76 (B4),

Start 16:

- Found in 17 of 375 (4.5%) of genes in pham
- Manual Annotations of this start: 10 of 329
- Called 94.1% of time when present
- Phage (with cluster) where this start called: Acadian_76 (B5), Bae_75 (B5), DigitDog_76 (B5), Donny_77 (B5), EastView9101_75 (B5), Mysterious_74 (B5), Nangang_75 (B5), Nehemiah_74 (B5), Phelemich_72 (B5), Reccee_77 (B5), Rich_74 (B5), Rita130_75 (B5), Serendipitous_74 (B5), Shenyu_76 (B5), SirJeffery_74 (B5), Suigeneris_77 (B5),

Start 17:

- Found in 36 of 375 (9.6%) of genes in pham
- Manual Annotations of this start: 22 of 329
- Called 86.1% of time when present
- Phage (with cluster) where this start called: Ahwei_71 (B4), Apex_74 (B4), Austelle_73 (B4), BobbyK_74 (B4), BrownCNA_74 (B4), ChrisnMich_73 (B4), Cooper_74 (B4), Fanaw_69 (B4), GinPorsche_73 (B4), Hally898_71 (B4), Hangman_74 (B4), Heath_73 (B4), Hydro_74 (B4), JAMaL_72 (B4), JaguarMi_73 (B4), JoyceMaria_73 (B4), Lambano_71 (B4), LittleDigger_72 (B4), Lolalove_74 (B4), Magpie_70 (B4), Mithril_72 (B4), Mudslide_73 (B4), Poster_71 (B4), Prince_72 (B4), QueenPie_67 (B4), RawrgerThat_73 (B4), Stinger_72 (B4), VioletZ_75 (B4), Waleliano_72 (B4), Xincheng_72 (B4), Zemanar_73 (B4),

Start 18:

- Found in 1 of 375 (0.3%) of genes in pham
- Manual Annotations of this start: 1 of 329
- Called 100.0% of time when present
- Phage (with cluster) where this start called: LilMcDreamy_74 (B12),

Start 20:

- Found in 40 of 375 (10.7%) of genes in pham
- Manual Annotations of this start: 1 of 329
- Called 2.5% of time when present
- Phage (with cluster) where this start called: Carthage_76 (B1),

Start 23:

- Found in 318 of 375 (84.8%) of genes in pham
- Manual Annotations of this start: 275 of 329
- Called 95.3% of time when present
- Phage (with cluster) where this start called: ABU_75 (B1), AbsoluteMadLad_75 (B1), Adriana_76 (B1), Aelin_75 (B1), Aleia_75 (B1), AltPhacts_74 (B1), Altwerkus_75 (B1), Anderson_78 (B1), Andre_78 (B1), AngelCake_75 (B1), Antonia_75 (B1), Aonishiki_76 (B1), Apizium_75 (B1), Ashraf_77 (B1), Badfish_77 (B1), Banjo_73 (B1), Basato_75 (B1), BatteryCK_74 (B1), Beaglebox_73 (B1), Bishoperium_76 (B1), BlackStallion_77 (B1), BlacksBerry_76 (B1), BlueHusk_77 (B1), Bluephacebaby_75

(B1), BoogieWoogie_75 (B1), Brilliant_79 (B1), Buckeye_76 (B1), Burr_76 (B1), CamL_76 (B1), CampRoach_77 (B1), Cannibal_77 (B1), Caspiboi_75 (B1), Chaelin_77 (B1), Chah_78 (B1), Charles1_77 (B1), CharlieGBrown_74 (B1), CheetO_75 (B1), Cher_76 (B1), Childish_76 (B1), Chipette_75 (B1), Chorkpop_77 (B1), Chuni_77 (B1), Chunky_76 (B1), Chute_76 (B1), Cobra_76 (B1), Colbert_74 (B1), Coletti_79 (B1), Cornbread_75 (B1), Cornobble_74 (B1), Cosmolli16_78 (B1), Craff_78 (B1), Crownjwl_74 (B1), DaddyDaniels_79 (B1), Daffy_75 (B1), Daka_78 (B1), Dati_73 (B1), DelRivs_74 (B1), Derpp_76 (B1), Dice_75 (B1), Dingo_73 (B1), Dione_74 (B1), DirtJuice_76 (B1), DoesntMatter_73 (B1), DolOn_80 (B1), DonSanchon_72 (B1), DuchessDung_74 (B1), Duggie_76 (B1), Durga_78 (B1), ElvisPhasley_77 (B1), EmGer13_76 (B1), Emiris_77 (B1), EmpTee_75 (B1), Eremos_75 (B1), Etaye_75 (B1), Eugenia_77 (B1), Fang_77 (B1), Flake_75 (B1), FleetyMac_79 (B1), FluffyNinja_77 (B1), Fozzie_74 (B1), Frankicide_75 (B1), FremontTroll_74 (B1), Freya_73 (B1), FriarPreacher_74 (B1), Fringe_80 (B1), FugateOSU_76 (B1), Gareth_76 (B1), GeneCoco_77 (B1), Giraffe_76 (B1), Gophee_76 (B1), Grand2040_74 (B1), GreenChile_75 (B1), Gwennie1_75 (B1), Gwilliam_77 (B1), Gyarad_0075 (B1), HSavage_74 (B1), Haimas_74 (B1), Haleema_75 (B1), Hamish_73 (B1), Happabalu_74 (B1), Hartsy_75 (B1), Harvey_73 (B1), Hekos_74 (B1), Held_74 (B1), HenryJackson_77 (B1), Hertubise_76 (B1), Hetaeria_76 (B1), HighStump_77 (B1), Hocus_74 (B1), HogWash_76 (B1), Horchata_73 (B1), ImtiyazSitla_77 (B1), Inchworm_77 (B1), Inverness_74 (B1), Iridessa_78 (B1), Iridoclysis_75 (B1), IsaacEli_78 (B1), JDog_75 (B1), JacAttac_76 (B1), JakeO_77 (B1), JangoPhett_74 (B1), Jesabah_78 (B1), Jillium_77 (B1), Jiminy_76 (B1), Jiraiya_77 (B1), KLucky39_74 (B1), Kahve_77 (B1), Kailash_74 (B1), Karn_76 (B1), Katniss_78 (B1), Keitherie_79 (B1), Khan1_76 (B1), Kikipoo_78 (B1), Kimbrough_77 (B1), KingTut_67 (B1), KingVeVeVe_74 (B1), KlimbOn_75 (B1), Kloppinator_76 (B1), Kwadwo_75 (B1), Kwksand96_77 (B1), Labeouficaum_76 (B1), Larson_78 (B1), LasagnaCat_77 (B1), Lasso_75 (B1), LeeLot_75 (B1), Lego3393_74 (B1), Legolas_77 (B1), Lehmann_78 (B1), LeiMonet_79 (B1), LemonSlice_76 (B1), Longacauda_77 (B1), Lopsy_73 (B1), LostAndPhound_75 (B1), LuckyMarjie_73 (B1), Lulwa_73 (B1), Lumine_77 (B1), MRabcd_76 (B1), Mag7_74 (B1), Magic8_75 (B1), Mana_74 (B1), Manad_75 (B1), Maru_76 (B1), Maskar_77 (B1), Matalotodo_75 (B1), Mcshane_75 (B1), Mecca_76 (B1), Megamind20_76 (B1), Megatron_77 (B1), Melc17_73 (B1), MelsMeow_75 (B1), Mesh1_77 (B1), Mesmerelda_75 (B1), MichaelPhcott_74 (B1), MiniBoss_73 (B1), MitKao_76 (B1), Morgushi_74 (B1), Morty_77 (B1), Mosaic_74 (B1), MrPhizzler_79 (B1), Mulan_75 (B1), Murdoc_73 (B1), Mutante_77 (B1), Nacho_0079 (B1), Nathan_77 (B1), Newman_74 (B1), NiaNia_77 (B1), Nicole21_77 (B1), Nova1_76 (B1), Numberten_75 (B1), Nyala_75 (B1), Olak_75 (B1), Olive_74 (B1), OliverWalter_76 (B1), Omniscient_77 (B1), OneBrain_79 (B1), Oosterbaan_76 (B1), Orfeu_75 (B1), Orwigg_75 (B1), Pacifista_75 (B1), PallasAthena_77 (B1), Phamished_76 (B1), Phareon_74 (B1), PhatCats2014_77 (B1), PhatLouie_78 (B1), PhenghisKhan_76 (B1), Pherdinand_77 (B1), Phergie_76 (B1), Phipps_75 (B1), Phleuron_74 (B1), PhrankReynolds_75 (B1), PhrodoBaggins_78 (B1), Phunky_74 (B1), Piglet_0076 (B1), PinheadLarry_75 (B1), Pinkman_76 (B1), Pipsqueak_73 (B1), Placalicious_75 (B1), Plata_75 (B1), Plmatters_74 (B1), Podrick_75 (B1), Pops_74 (B1), Potter_72 (B1), Prickles_77 (B1), ProfessorX_74 (B1), Puhltonio_74 (B1), QueenBeane_76 (B1), Quisquilliae_78 (B1), RedMaple_76 (B1), RedRaider89_75 (B1), Ricotta_76 (B1), Riggan_77 (B1), Rimu_76 (B1), Riverton_75 (B1), Roliet_73 (B1), Roscoe_76 (B1), SDcharge11_75 (B1), SallyH_78 (B1), Samaymay_76 (B1), SassyCat97_74 (B1), Schadenfreude_76 (B1), Schueller_74 (B1), Scoot17C_77 (B1), Scrick_75 (B1), Selr12_77 (B1), Serendipity_76 (B1), Serpentine_0077 (B1), ShadowBud_76 (B1), Sheila_72 (B1), ShiVal_74 (B1), Sigman_76 (B1), SilverBell_77 (B1), Simielle_75 (B1),

SirBeauregard_77 (B1), Skippy_77 (B1), Slatt_76 (B1), Soile_77 (B1), Solosis_74 (B1), Sophia_74 (B1), Soto_73 (B1), Spartan300_75 (B1), Squid_75 (B1), Squiggle_75 (B1), Struggle_76 (B1), Surely_76 (B1), Swiphy_78 (B1), Swish_77 (B1), TallGrassMM_75 (B1), Taraxa_76 (B1), Telesworld_74 (B1), Thora_75 (B1), ThreeOh3D2_78 (B1), Thunderbird_76 (B1), Timmi_75 (B1), TomBombadil_76 (B1), Tomlarah_77 (B1), Toni_76 (B1), TooFast2Furius_75 (B1), Tooj_73 (B1), Triad_77 (B1), True_74 (B1), Trypo_77 (B1), TyrionL_76 (B1), UAch1_77 (B1), UncleHowie_73 (B1), Usavi_77 (B1), Vaishali24_77 (B1), Valjean_75 (B1), Vaticameos_73 (B1), Veritas_75 (B1), Virapocalypse_77 (B1), Virgeve_74 (B1), Vista_75 (B1), Vivaldi_76 (B1), Wallhey_77 (B1), Waterdiva_77 (B1), Weher20_73 (B1), Windsor_76 (B1), Xavier_76 (B1), Yoshand_77 (B1), YouGoGlencoco_76 (B1), Zaider_77 (B1), Zelda_76 (B1), Zonia_77 (B1),

Summary by clusters:

There are 7 clusters represented in this pham: B4, B5, B12, B1, B11, B8, B9,

Info for manual annotations of cluster B1:

- Start number 14 was manually annotated 10 times for cluster B1.
- Start number 20 was manually annotated 1 time for cluster B1.
- Start number 23 was manually annotated 275 times for cluster B1.

Info for manual annotations of cluster B11:

- Start number 14 was manually annotated 1 time for cluster B11.

Info for manual annotations of cluster B12:

- Start number 18 was manually annotated 1 time for cluster B12.

Info for manual annotations of cluster B4:

- Start number 11 was manually annotated 2 times for cluster B4.
- Start number 15 was manually annotated 2 times for cluster B4.
- Start number 17 was manually annotated 22 times for cluster B4.

Info for manual annotations of cluster B5:

- Start number 9 was manually annotated 1 time for cluster B5.
- Start number 16 was manually annotated 10 times for cluster B5.

Info for manual annotations of cluster B8:

- Start number 14 was manually annotated 1 time for cluster B8.

Info for manual annotations of cluster B9:

- Start number 14 was manually annotated 3 times for cluster B9.

Gene Information:

Gene: ABU_75 Start: 60750, Stop: 60986, Start Num: 23

Candidate Starts for ABU_75:

(Start: 14 @60657 has 15 MA's), (Start: 23 @60750 has 275 MA's), (24, 60909), (25, 60912),

Gene: AbsoluteMadLad_75 Start: 60705, Stop: 60941, Start Num: 23

Candidate Starts for AbsoluteMadLad_75:

(Start: 14 @60612 has 15 MA's), (Start: 23 @60705 has 275 MA's), (24, 60864), (25, 60867),

Gene: Acadian_76 Start: 61455, Stop: 61769, Start Num: 16

Candidate Starts for Acadian_76:

(6, 61368), (12, 61419), (Start: 16 @61455 has 10 MA's),

Gene: Adriana_76 Start: 61285, Stop: 61521, Start Num: 23

Candidate Starts for Adriana_76:

(Start: 14 @61192 has 15 MA's), (Start: 23 @61285 has 275 MA's), (24, 61444), (25, 61447),

Gene: Aelin_75 Start: 60228, Stop: 60464, Start Num: 23

Candidate Starts for Aelin_75:

(Start: 14 @60132 has 15 MA's), (Start: 23 @60228 has 275 MA's), (24, 60387), (25, 60390),

Gene: Ahwei_71 Start: 60893, Stop: 61204, Start Num: 17

Candidate Starts for Ahwei_71:

(Start: 11 @60857 has 2 MA's), (Start: 17 @60893 has 22 MA's), (Start: 20 @60932 has 1 MA's), (25, 61139),

Gene: AlanGrant_77 Start: 63336, Stop: 63656, Start Num: 15

Candidate Starts for AlanGrant_77:

(Start: 15 @63336 has 2 MA's), (25, 63588),

Gene: Aleia_75 Start: 60392, Stop: 60628, Start Num: 23

Candidate Starts for Aleia_75:

(Start: 14 @60299 has 15 MA's), (Start: 23 @60392 has 275 MA's),

Gene: AltPhacts_74 Start: 59793, Stop: 60029, Start Num: 23

Candidate Starts for AltPhacts_74:

(Start: 14 @59700 has 15 MA's), (Start: 23 @59793 has 275 MA's), (24, 59952), (25, 59955),

Gene: Altwerkus_75 Start: 60069, Stop: 60305, Start Num: 23

Candidate Starts for Altwerkus_75:

(Start: 14 @59973 has 15 MA's), (Start: 23 @60069 has 275 MA's), (24, 60228), (25, 60231),

Gene: Anderson_78 Start: 60626, Stop: 60862, Start Num: 23

Candidate Starts for Anderson_78:

(Start: 14 @60533 has 15 MA's), (Start: 23 @60626 has 275 MA's), (24, 60785), (25, 60788),

Gene: Andre_78 Start: 60644, Stop: 60880, Start Num: 23

Candidate Starts for Andre_78:

(Start: 14 @60551 has 15 MA's), (Start: 23 @60644 has 275 MA's),

Gene: AngelCake_75 Start: 60375, Stop: 60611, Start Num: 23

Candidate Starts for AngelCake_75:

(Start: 14 @60279 has 15 MA's), (Start: 23 @60375 has 275 MA's), (24, 60534), (25, 60537),

Gene: Antihero_71 Start: 60858, Stop: 61211, Start Num: 11

Candidate Starts for Antihero_71:

(Start: 11 @60858 has 2 MA's), (Start: 17 @60894 has 22 MA's), (Start: 20 @60933 has 1 MA's), (25, 61143),

Gene: Antonia_75 Start: 60272, Stop: 60508, Start Num: 23

Candidate Starts for Antonia_75:
(Start: 14 @60179 has 15 MA's), (Start: 23 @60272 has 275 MA's), (24, 60431), (25, 60434),

Gene: Aonishiki_76 Start: 60561, Stop: 60797, Start Num: 23
Candidate Starts for Aonishiki_76:
(Start: 14 @60465 has 15 MA's), (Start: 23 @60561 has 275 MA's),

Gene: Apex_74 Start: 61991, Stop: 62302, Start Num: 17
Candidate Starts for Apex_74:
(Start: 17 @61991 has 22 MA's), (Start: 20 @62030 has 1 MA's), (25, 62237),

Gene: Apizium_75 Start: 59907, Stop: 60143, Start Num: 23
Candidate Starts for Apizium_75:
(Start: 14 @59814 has 15 MA's), (Start: 23 @59907 has 275 MA's),

Gene: Ashraf_77 Start: 60620, Stop: 60856, Start Num: 23
Candidate Starts for Ashraf_77:
(Start: 14 @60527 has 15 MA's), (Start: 23 @60620 has 275 MA's),

Gene: Austelle_73 Start: 62508, Stop: 62819, Start Num: 17
Candidate Starts for Austelle_73:
(Start: 17 @62508 has 22 MA's), (Start: 20 @62547 has 1 MA's), (25, 62754),

Gene: Badfish_77 Start: 60925, Stop: 61161, Start Num: 23
Candidate Starts for Badfish_77:
(Start: 14 @60832 has 15 MA's), (Start: 23 @60925 has 275 MA's),

Gene: Bae_75 Start: 62154, Stop: 62468, Start Num: 16
Candidate Starts for Bae_75:
(6, 62067), (12, 62118), (Start: 16 @62154 has 10 MA's),

Gene: Banjo_73 Start: 60214, Stop: 60450, Start Num: 23
Candidate Starts for Banjo_73:
(Start: 14 @60121 has 15 MA's), (Start: 23 @60214 has 275 MA's), (24, 60373), (25, 60376),

Gene: Basato_75 Start: 60487, Stop: 60723, Start Num: 23
Candidate Starts for Basato_75:
(Start: 14 @60394 has 15 MA's), (Start: 23 @60487 has 275 MA's), (24, 60646), (25, 60649),

Gene: BatteryCK_74 Start: 60187, Stop: 60423, Start Num: 23
Candidate Starts for BatteryCK_74:
(Start: 14 @60091 has 15 MA's), (Start: 23 @60187 has 275 MA's), (24, 60346), (25, 60349),

Gene: Beaglebox_73 Start: 60325, Stop: 60561, Start Num: 23
Candidate Starts for Beaglebox_73:
(Start: 14 @60232 has 15 MA's), (Start: 23 @60325 has 275 MA's), (24, 60484), (25, 60487),

Gene: Bishoperium_76 Start: 60766, Stop: 61002, Start Num: 23
Candidate Starts for Bishoperium_76:
(Start: 14 @60673 has 15 MA's), (Start: 23 @60766 has 275 MA's), (24, 60925), (25, 60928),

Gene: BlackStallion_77 Start: 60634, Stop: 60870, Start Num: 23
Candidate Starts for BlackStallion_77:

(Start: 14 @60541 has 15 MA's), (Start: 23 @60634 has 275 MA's), (24, 60793), (25, 60796),

Gene: BlacksBerry_76 Start: 60141, Stop: 60377, Start Num: 23

Candidate Starts for BlacksBerry_76:

(Start: 14 @60048 has 15 MA's), (Start: 23 @60141 has 275 MA's), (24, 60300), (25, 60303),

Gene: BlueHusk_77 Start: 60261, Stop: 60497, Start Num: 23

Candidate Starts for BlueHusk_77:

(Start: 14 @60168 has 15 MA's), (Start: 23 @60261 has 275 MA's),

Gene: Bluephacebaby_75 Start: 60799, Stop: 61035, Start Num: 23

Candidate Starts for Bluephacebaby_75:

(Start: 14 @60706 has 15 MA's), (Start: 23 @60799 has 275 MA's),

Gene: BobbyK_74 Start: 61762, Stop: 62073, Start Num: 17

Candidate Starts for BobbyK_74:

(Start: 17 @61762 has 22 MA's), (Start: 20 @61801 has 1 MA's), (Start: 23 @61855 has 275 MA's), (25, 62008),

Gene: Boehler_75 Start: 60324, Stop: 60653, Start Num: 14

Candidate Starts for Boehler_75:

(Start: 14 @60324 has 15 MA's), (Start: 23 @60417 has 275 MA's), (24, 60576), (25, 60579),

Gene: BoogieWoogie_75 Start: 60232, Stop: 60468, Start Num: 23

Candidate Starts for BoogieWoogie_75:

(Start: 14 @60139 has 15 MA's), (Start: 23 @60232 has 275 MA's),

Gene: Brilliant_79 Start: 60780, Stop: 61016, Start Num: 23

Candidate Starts for Brilliant_79:

(Start: 14 @60687 has 15 MA's), (Start: 23 @60780 has 275 MA's), (24, 60939), (25, 60942),

Gene: BrownCNA_74 Start: 61930, Stop: 62244, Start Num: 17

Candidate Starts for BrownCNA_74:

(4, 61759), (7, 61861), (Start: 17 @61930 has 22 MA's), (Start: 20 @61969 has 1 MA's), (25, 62176),

Gene: Buckeye_76 Start: 61313, Stop: 61549, Start Num: 23

Candidate Starts for Buckeye_76:

(Start: 14 @61220 has 15 MA's), (Start: 23 @61313 has 275 MA's), (24, 61472), (25, 61475),

Gene: Burr_76 Start: 60232, Stop: 60468, Start Num: 23

Candidate Starts for Burr_76:

(Start: 14 @60139 has 15 MA's), (Start: 23 @60232 has 275 MA's), (24, 60391), (25, 60394),

Gene: CRB2_76 Start: 64139, Stop: 64459, Start Num: 14

Candidate Starts for CRB2_76:

(Start: 14 @64139 has 15 MA's), (Start: 20 @64187 has 1 MA's), (22, 64232), (Start: 23 @64238 has 275 MA's), (25, 64394),

Gene: CamL_76 Start: 60540, Stop: 60776, Start Num: 23

Candidate Starts for CamL_76:

(Start: 14 @60444 has 15 MA's), (Start: 23 @60540 has 275 MA's), (24, 60699), (25, 60702),

Gene: CampRoach_77 Start: 60647, Stop: 60883, Start Num: 23

Candidate Starts for CampRoach_77:

(Start: 14 @60551 has 15 MA's), (Start: 23 @60647 has 275 MA's), (24, 60806), (25, 60809),

Gene: Cannibal_77 Start: 60653, Stop: 60889, Start Num: 23

Candidate Starts for Cannibal_77:

(Start: 14 @60557 has 15 MA's), (Start: 23 @60653 has 275 MA's),

Gene: Carthage_76 Start: 60068, Stop: 60358, Start Num: 20

Candidate Starts for Carthage_76:

(Start: 14 @60026 has 15 MA's), (Start: 20 @60068 has 1 MA's), (Start: 23 @60122 has 275 MA's), (24, 60281), (25, 60284),

Gene: Caspiboi_75 Start: 60486, Stop: 60722, Start Num: 23

Candidate Starts for Caspiboi_75:

(Start: 14 @60393 has 15 MA's), (Start: 23 @60486 has 275 MA's), (24, 60645), (25, 60648),

Gene: Chaelin_77 Start: 60780, Stop: 61016, Start Num: 23

Candidate Starts for Chaelin_77:

(Start: 14 @60687 has 15 MA's), (Start: 23 @60780 has 275 MA's),

Gene: Chah_78 Start: 60368, Stop: 60604, Start Num: 23

Candidate Starts for Chah_78:

(Start: 14 @60275 has 15 MA's), (Start: 23 @60368 has 275 MA's),

Gene: Charles1_77 Start: 60555, Stop: 60791, Start Num: 23

Candidate Starts for Charles1_77:

(Start: 14 @60462 has 15 MA's), (Start: 23 @60555 has 275 MA's),

Gene: CharlieGBrown_74 Start: 60162, Stop: 60398, Start Num: 23

Candidate Starts for CharlieGBrown_74:

(Start: 14 @60069 has 15 MA's), (Start: 23 @60162 has 275 MA's), (24, 60321), (25, 60324),

Gene: CheetO_75 Start: 60482, Stop: 60718, Start Num: 23

Candidate Starts for CheetO_75:

(Start: 14 @60389 has 15 MA's), (Start: 23 @60482 has 275 MA's), (24, 60641), (25, 60644),

Gene: Cher_76 Start: 60743, Stop: 60979, Start Num: 23

Candidate Starts for Cher_76:

(Start: 14 @60650 has 15 MA's), (Start: 23 @60743 has 275 MA's), (24, 60902), (25, 60905),

Gene: Childish_76 Start: 60944, Stop: 61180, Start Num: 23

Candidate Starts for Childish_76:

(Start: 14 @60851 has 15 MA's), (Start: 23 @60944 has 275 MA's), (24, 61103), (25, 61106),

Gene: Chipette_75 Start: 60481, Stop: 60717, Start Num: 23

Candidate Starts for Chipette_75:

(Start: 14 @60388 has 15 MA's), (Start: 23 @60481 has 275 MA's), (24, 60640), (25, 60643),

Gene: Chorkpop_77 Start: 60407, Stop: 60643, Start Num: 23

Candidate Starts for Chorkpop_77:

(Start: 14 @60311 has 15 MA's), (Start: 23 @60407 has 275 MA's), (24, 60566), (25, 60569),

Gene: ChrisnMich_73 Start: 60878, Stop: 61189, Start Num: 17

Candidate Starts for ChrisnMich_73:

(Start: 11 @60842 has 2 MA's), (Start: 17 @60878 has 22 MA's), (Start: 20 @60917 has 1 MA's), (25, 61124),

Gene: Chuni_77 Start: 60996, Stop: 61232, Start Num: 23

Candidate Starts for Chuni_77:

(Start: 14 @60903 has 15 MA's), (Start: 23 @60996 has 275 MA's), (24, 61155), (25, 61158),

Gene: Chunky_76 Start: 60078, Stop: 60314, Start Num: 23

Candidate Starts for Chunky_76:

(Start: 14 @59985 has 15 MA's), (Start: 23 @60078 has 275 MA's), (24, 60237), (25, 60240),

Gene: Chute_76 Start: 60799, Stop: 61029, Start Num: 23

Candidate Starts for Chute_76:

(Start: 14 @60703 has 15 MA's), (Start: 23 @60799 has 275 MA's), (24, 60958), (25, 60961),

Gene: Cobra_76 Start: 60777, Stop: 61013, Start Num: 23

Candidate Starts for Cobra_76:

(Start: 14 @60684 has 15 MA's), (Start: 23 @60777 has 275 MA's), (24, 60936), (25, 60939),

Gene: Colbert_74 Start: 59827, Stop: 60063, Start Num: 23

Candidate Starts for Colbert_74:

(Start: 14 @59734 has 15 MA's), (Start: 23 @59827 has 275 MA's), (24, 59986), (25, 59989),

Gene: Coletti_79 Start: 61302, Stop: 61532, Start Num: 23

Candidate Starts for Coletti_79:

(Start: 14 @61206 has 15 MA's), (Start: 23 @61302 has 275 MA's), (24, 61461), (25, 61464),

Gene: Cooper_74 Start: 61332, Stop: 61646, Start Num: 17

Candidate Starts for Cooper_74:

(8, 61266), (Start: 17 @61332 has 22 MA's), (22, 61419), (25, 61578),

Gene: Cornbread_75 Start: 60434, Stop: 60670, Start Num: 23

Candidate Starts for Cornbread_75:

(Start: 14 @60341 has 15 MA's), (Start: 23 @60434 has 275 MA's), (24, 60593), (25, 60596),

Gene: Cornobble_74 Start: 60265, Stop: 60501, Start Num: 23

Candidate Starts for Cornobble_74:

(Start: 14 @60169 has 15 MA's), (Start: 23 @60265 has 275 MA's), (24, 60424), (25, 60427),

Gene: Cosmolli16_78 Start: 61122, Stop: 61358, Start Num: 23

Candidate Starts for Cosmolli16_78:

(Start: 14 @61029 has 15 MA's), (Start: 23 @61122 has 275 MA's), (24, 61281), (25, 61284),

Gene: Craff_78 Start: 61165, Stop: 61401, Start Num: 23

Candidate Starts for Craff_78:

(Start: 14 @61072 has 15 MA's), (Start: 23 @61165 has 275 MA's), (24, 61324), (25, 61327),

Gene: Crownjwl_74 Start: 60257, Stop: 60493, Start Num: 23

Candidate Starts for Crownjwl_74:

(Start: 14 @60164 has 15 MA's), (Start: 23 @60257 has 275 MA's), (24, 60416), (25, 60419),

Gene: DaddyDaniels_79 Start: 60889, Stop: 61125, Start Num: 23

Candidate Starts for DaddyDaniels_79:

(Start: 14 @60796 has 15 MA's), (Start: 23 @60889 has 275 MA's), (24, 61048), (25, 61051),

Gene: Daffy_75 Start: 60392, Stop: 60628, Start Num: 23

Candidate Starts for Daffy_75:

(Start: 14 @60296 has 15 MA's), (Start: 23 @60392 has 275 MA's), (24, 60551), (25, 60554),

Gene: Daka_78 Start: 60750, Stop: 60986, Start Num: 23

Candidate Starts for Daka_78:

(Start: 14 @60657 has 15 MA's), (Start: 23 @60750 has 275 MA's), (24, 60909), (25, 60912),

Gene: Dati_73 Start: 60565, Stop: 60801, Start Num: 23

Candidate Starts for Dati_73:

(Start: 14 @60469 has 15 MA's), (Start: 23 @60565 has 275 MA's), (24, 60724), (25, 60727),

Gene: DelRivs_74 Start: 60205, Stop: 60441, Start Num: 23

Candidate Starts for DelRivs_74:

(Start: 14 @60112 has 15 MA's), (Start: 23 @60205 has 275 MA's), (24, 60364), (25, 60367),

Gene: Derpp_76 Start: 60311, Stop: 60547, Start Num: 23

Candidate Starts for Derpp_76:

(Start: 14 @60218 has 15 MA's), (Start: 23 @60311 has 275 MA's), (24, 60470), (25, 60473),

Gene: Dice_75 Start: 60230, Stop: 60466, Start Num: 23

Candidate Starts for Dice_75:

(Start: 14 @60137 has 15 MA's), (Start: 23 @60230 has 275 MA's), (24, 60389), (25, 60392),

Gene: DigitDog_76 Start: 61556, Stop: 61867, Start Num: 16

Candidate Starts for DigitDog_76:

(6, 61469), (12, 61520), (Start: 16 @61556 has 10 MA's),

Gene: Dingo_73 Start: 59784, Stop: 60020, Start Num: 23

Candidate Starts for Dingo_73:

(Start: 14 @59688 has 15 MA's), (Start: 23 @59784 has 275 MA's), (24, 59943), (25, 59946),

Gene: Dione_74 Start: 59967, Stop: 60203, Start Num: 23

Candidate Starts for Dione_74:

(Start: 14 @59874 has 15 MA's), (Start: 23 @59967 has 275 MA's),

Gene: DirtJuice_76 Start: 60535, Stop: 60771, Start Num: 23

Candidate Starts for DirtJuice_76:

(Start: 14 @60439 has 15 MA's), (Start: 20 @60481 has 1 MA's), (Start: 23 @60535 has 275 MA's), (24, 60694), (25, 60697),

Gene: Doddsville_74 Start: 60184, Stop: 60513, Start Num: 14

Candidate Starts for Doddsville_74:

(Start: 14 @60184 has 15 MA's), (Start: 23 @60277 has 275 MA's), (24, 60436), (25, 60439),

Gene: DoesntMatter_73 Start: 60254, Stop: 60490, Start Num: 23

Candidate Starts for DoesntMatter_73:

(Start: 14 @60161 has 15 MA's), (Start: 23 @60254 has 275 MA's), (24, 60413), (25, 60416),

Gene: DolOn_80 Start: 61684, Stop: 61920, Start Num: 23

Candidate Starts for DoIOn_80:

(Start: 14 @61591 has 15 MA's), (Start: 23 @61684 has 275 MA's), (24, 61843), (25, 61846),

Gene: DonSanchon_72 Start: 59915, Stop: 60151, Start Num: 23

Candidate Starts for DonSanchon_72:

(Start: 14 @59819 has 15 MA's), (Start: 23 @59915 has 275 MA's), (24, 60074), (25, 60077),

Gene: Donny_77 Start: 61495, Stop: 61809, Start Num: 16

Candidate Starts for Donny_77:

(6, 61408), (12, 61459), (Start: 16 @61495 has 10 MA's),

Gene: DuchessDung_74 Start: 59793, Stop: 60029, Start Num: 23

Candidate Starts for DuchessDung_74:

(Start: 14 @59700 has 15 MA's), (Start: 23 @59793 has 275 MA's), (24, 59952), (25, 59955),

Gene: Duggie_76 Start: 60534, Stop: 60770, Start Num: 23

Candidate Starts for Duggie_76:

(Start: 14 @60438 has 15 MA's), (Start: 23 @60534 has 275 MA's),

Gene: Durga_78 Start: 61014, Stop: 61250, Start Num: 23

Candidate Starts for Durga_78:

(Start: 14 @60921 has 15 MA's), (Start: 23 @61014 has 275 MA's), (24, 61173), (25, 61176),

Gene: EastView9101_75 Start: 61199, Stop: 61513, Start Num: 16

Candidate Starts for EastView9101_75:

(6, 61112), (12, 61163), (Start: 16 @61199 has 10 MA's),

Gene: ElvisPhasley_77 Start: 61390, Stop: 61626, Start Num: 23

Candidate Starts for ElvisPhasley_77:

(Start: 14 @61297 has 15 MA's), (Start: 23 @61390 has 275 MA's), (24, 61549), (25, 61552),

Gene: EmGer13_76 Start: 60272, Stop: 60508, Start Num: 23

Candidate Starts for EmGer13_76:

(Start: 14 @60179 has 15 MA's), (Start: 23 @60272 has 275 MA's), (24, 60431), (25, 60434),

Gene: Emiris_77 Start: 60926, Stop: 61162, Start Num: 23

Candidate Starts for Emiris_77:

(Start: 14 @60830 has 15 MA's), (Start: 23 @60926 has 275 MA's), (24, 61085), (25, 61088),

Gene: EmpTee_75 Start: 60474, Stop: 60710, Start Num: 23

Candidate Starts for EmpTee_75:

(Start: 14 @60381 has 15 MA's), (Start: 23 @60474 has 275 MA's),

Gene: Epah_71 Start: 60858, Stop: 61211, Start Num: 11

Candidate Starts for Epah_71:

(Start: 11 @60858 has 2 MA's), (Start: 17 @60894 has 22 MA's), (Start: 20 @60933 has 1 MA's), (25, 61143),

Gene: Eremos_75 Start: 60445, Stop: 60681, Start Num: 23

Candidate Starts for Eremos_75:

(Start: 14 @60352 has 15 MA's), (Start: 23 @60445 has 275 MA's), (24, 60604), (25, 60607),

Gene: Etabe_75 Start: 61105, Stop: 61341, Start Num: 23

Candidate Starts for Etaye_75:

(Start: 14 @61012 has 15 MA's), (Start: 23 @61105 has 275 MA's), (24, 61264), (25, 61267),

Gene: Eugenia_77 Start: 61059, Stop: 61295, Start Num: 23

Candidate Starts for Eugenia_77:

(Start: 14 @60966 has 15 MA's), (Start: 23 @61059 has 275 MA's),

Gene: Fanaw_69 Start: 61712, Stop: 62023, Start Num: 17

Candidate Starts for Fanaw_69:

(4, 61541), (8, 61646), (Start: 17 @61712 has 22 MA's), (Start: 20 @61751 has 1 MA's), (25, 61958),

Gene: Fang_77 Start: 60765, Stop: 61001, Start Num: 23

Candidate Starts for Fang_77:

(Start: 14 @60672 has 15 MA's), (Start: 23 @60765 has 275 MA's), (24, 60924), (25, 60927),

Gene: Flake_75 Start: 60519, Stop: 60755, Start Num: 23

Candidate Starts for Flake_75:

(Start: 14 @60426 has 15 MA's), (Start: 23 @60519 has 275 MA's), (24, 60678), (25, 60681),

Gene: FleetyMac_79 Start: 60448, Stop: 60684, Start Num: 23

Candidate Starts for FleetyMac_79:

(Start: 14 @60355 has 15 MA's), (Start: 23 @60448 has 275 MA's), (24, 60607), (25, 60610),

Gene: FluffyNinja_77 Start: 60635, Stop: 60871, Start Num: 23

Candidate Starts for FluffyNinja_77:

(Start: 14 @60542 has 15 MA's), (Start: 23 @60635 has 275 MA's), (24, 60794), (25, 60797),

Gene: Fozzie_74 Start: 60962, Stop: 61198, Start Num: 23

Candidate Starts for Fozzie_74:

(Start: 14 @60869 has 15 MA's), (Start: 23 @60962 has 275 MA's), (24, 61121), (25, 61124),

Gene: Frankicide_75 Start: 60444, Stop: 60680, Start Num: 23

Candidate Starts for Frankicide_75:

(Start: 14 @60351 has 15 MA's), (Start: 23 @60444 has 275 MA's), (24, 60603), (25, 60606),

Gene: Frederick_75 Start: 61979, Stop: 62326, Start Num: 11

Candidate Starts for Frederick_75:

(Start: 11 @61979 has 2 MA's), (Start: 17 @62015 has 22 MA's), (Start: 20 @62054 has 1 MA's), (25, 62261),

Gene: FremontTroll_74 Start: 60856, Stop: 61092, Start Num: 23

Candidate Starts for FremontTroll_74:

(Start: 14 @60763 has 15 MA's), (Start: 23 @60856 has 275 MA's), (24, 61015), (25, 61018),

Gene: Freya_73 Start: 59936, Stop: 60172, Start Num: 23

Candidate Starts for Freya_73:

(Start: 14 @59840 has 15 MA's), (Start: 23 @59936 has 275 MA's), (24, 60095), (25, 60098),

Gene: FriarPreacher_74 Start: 60319, Stop: 60555, Start Num: 23

Candidate Starts for FriarPreacher_74:

(Start: 14 @60226 has 15 MA's), (Start: 23 @60319 has 275 MA's),

Gene: Fringe_80 Start: 61114, Stop: 61350, Start Num: 23

Candidate Starts for Fringe_80:

(Start: 14 @61018 has 15 MA's), (Start: 23 @61114 has 275 MA's), (24, 61273), (25, 61276),

Gene: FugateOSU_76 Start: 61257, Stop: 61493, Start Num: 23

Candidate Starts for FugateOSU_76:

(Start: 14 @61164 has 15 MA's), (Start: 23 @61257 has 275 MA's), (24, 61416), (25, 61419),

Gene: Gareth_76 Start: 60765, Stop: 61001, Start Num: 23

Candidate Starts for Gareth_76:

(Start: 14 @60672 has 15 MA's), (Start: 23 @60765 has 275 MA's), (24, 60924), (25, 60927),

Gene: GeneCoco_77 Start: 60927, Stop: 61163, Start Num: 23

Candidate Starts for GeneCoco_77:

(Start: 14 @60834 has 15 MA's), (Start: 23 @60927 has 275 MA's), (24, 61086), (25, 61089),

Gene: GinPorsche_73 Start: 60891, Stop: 61208, Start Num: 17

Candidate Starts for GinPorsche_73:

(Start: 11 @60855 has 2 MA's), (Start: 17 @60891 has 22 MA's), (Start: 20 @60930 has 1 MA's), (25, 61140),

Gene: Giraffe_76 Start: 60760, Stop: 60996, Start Num: 23

Candidate Starts for Giraffe_76:

(Start: 14 @60667 has 15 MA's), (Start: 23 @60760 has 275 MA's), (24, 60919), (25, 60922),

Gene: Gophee_76 Start: 60757, Stop: 60993, Start Num: 23

Candidate Starts for Gophee_76:

(Start: 14 @60664 has 15 MA's), (Start: 23 @60757 has 275 MA's),

Gene: Grand2040_74 Start: 60735, Stop: 60971, Start Num: 23

Candidate Starts for Grand2040_74:

(Start: 14 @60642 has 15 MA's), (Start: 23 @60735 has 275 MA's),

Gene: GreenChile_75 Start: 60269, Stop: 60505, Start Num: 23

Candidate Starts for GreenChile_75:

(Start: 14 @60176 has 15 MA's), (Start: 23 @60269 has 275 MA's), (24, 60428), (25, 60431),

Gene: Gwennie1_75 Start: 60573, Stop: 60809, Start Num: 23

Candidate Starts for Gwennie1_75:

(Start: 14 @60480 has 15 MA's), (Start: 23 @60573 has 275 MA's), (24, 60732), (25, 60735),

Gene: Gwilliam_77 Start: 61126, Stop: 61362, Start Num: 23

Candidate Starts for Gwilliam_77:

(Start: 14 @61033 has 15 MA's), (Start: 23 @61126 has 275 MA's), (24, 61285), (25, 61288),

Gene: Gyarad_0075 Start: 60082, Stop: 60318, Start Num: 23

Candidate Starts for Gyarad_0075:

(Start: 14 @59989 has 15 MA's), (Start: 23 @60082 has 275 MA's),

Gene: HSavage_74 Start: 60272, Stop: 60508, Start Num: 23

Candidate Starts for HSavage_74:

(Start: 14 @60179 has 15 MA's), (Start: 23 @60272 has 275 MA's), (24, 60431), (25, 60434),

Gene: Haimas_74 Start: 60192, Stop: 60428, Start Num: 23

Candidate Starts for Haimas_74:

(Start: 14 @60099 has 15 MA's), (Start: 23 @60192 has 275 MA's), (24, 60351), (25, 60354),

Gene: Haleema_75 Start: 60306, Stop: 60542, Start Num: 23

Candidate Starts for Haleema_75:

(Start: 14 @60210 has 15 MA's), (Start: 23 @60306 has 275 MA's), (24, 60465), (25, 60468),

Gene: Hally898_71 Start: 60906, Stop: 61217, Start Num: 17

Candidate Starts for Hally898_71:

(Start: 11 @60870 has 2 MA's), (Start: 17 @60906 has 22 MA's), (Start: 20 @60945 has 1 MA's), (25, 61152),

Gene: Hamish_73 Start: 60310, Stop: 60546, Start Num: 23

Candidate Starts for Hamish_73:

(Start: 14 @60217 has 15 MA's), (Start: 23 @60310 has 275 MA's), (24, 60469), (25, 60472),

Gene: Hangman_74 Start: 62206, Stop: 62517, Start Num: 17

Candidate Starts for Hangman_74:

(Start: 17 @62206 has 22 MA's), (Start: 20 @62245 has 1 MA's), (25, 62452),

Gene: Happabalu_74 Start: 61411, Stop: 61647, Start Num: 23

Candidate Starts for Happabalu_74:

(Start: 14 @61315 has 15 MA's), (Start: 23 @61411 has 275 MA's), (24, 61570), (25, 61573),

Gene: Hartsy_75 Start: 60421, Stop: 60657, Start Num: 23

Candidate Starts for Hartsy_75:

(Start: 14 @60325 has 15 MA's), (Start: 23 @60421 has 275 MA's), (24, 60580), (25, 60583),

Gene: Harvey_73 Start: 60218, Stop: 60454, Start Num: 23

Candidate Starts for Harvey_73:

(Start: 14 @60125 has 15 MA's), (Start: 23 @60218 has 275 MA's),

Gene: Heath_73 Start: 61833, Stop: 62144, Start Num: 17

Candidate Starts for Heath_73:

(Start: 17 @61833 has 22 MA's), (Start: 20 @61872 has 1 MA's), (25, 62079),

Gene: Hekos_74 Start: 60104, Stop: 60340, Start Num: 23

Candidate Starts for Hekos_74:

(Start: 14 @60011 has 15 MA's), (Start: 23 @60104 has 275 MA's), (24, 60263), (25, 60266),

Gene: Held_74 Start: 60213, Stop: 60449, Start Num: 23

Candidate Starts for Held_74:

(Start: 14 @60117 has 15 MA's), (Start: 23 @60213 has 275 MA's), (24, 60372), (25, 60375),

Gene: HenryJackson_77 Start: 60933, Stop: 61169, Start Num: 23

Candidate Starts for HenryJackson_77:

(Start: 14 @60840 has 15 MA's), (Start: 23 @60933 has 275 MA's), (24, 61092), (25, 61095),

Gene: Hertubise_76 Start: 60699, Stop: 60935, Start Num: 23

Candidate Starts for Hertubise_76:

(Start: 14 @60606 has 15 MA's), (Start: 23 @60699 has 275 MA's),

Gene: Hetaeria_76 Start: 60582, Stop: 60818, Start Num: 23

Candidate Starts for Hetaeria_76:

(Start: 14 @60489 has 15 MA's), (Start: 23 @60582 has 275 MA's),

Gene: HighStump_77 Start: 60718, Stop: 60954, Start Num: 23

Candidate Starts for HighStump_77:

(Start: 14 @60625 has 15 MA's), (Start: 23 @60718 has 275 MA's), (24, 60877), (25, 60880),

Gene: Hocus_74 Start: 60234, Stop: 60470, Start Num: 23

Candidate Starts for Hocus_74:

(Start: 14 @60141 has 15 MA's), (Start: 23 @60234 has 275 MA's), (24, 60393), (25, 60396),

Gene: HogWash_76 Start: 61113, Stop: 61349, Start Num: 23

Candidate Starts for HogWash_76:

(Start: 14 @61017 has 15 MA's), (Start: 23 @61113 has 275 MA's), (24, 61272), (25, 61275),

Gene: Horchata_73 Start: 60231, Stop: 60467, Start Num: 23

Candidate Starts for Horchata_73:

(Start: 14 @60135 has 15 MA's), (Start: 20 @60177 has 1 MA's), (Start: 23 @60231 has 275 MA's), (24, 60390), (25, 60393),

Gene: Hydro_74 Start: 62144, Stop: 62455, Start Num: 17

Candidate Starts for Hydro_74:

(Start: 17 @62144 has 22 MA's), (Start: 20 @62183 has 1 MA's), (25, 62390),

Gene: ImtiyazSitla_77 Start: 60620, Stop: 60856, Start Num: 23

Candidate Starts for ImtiyazSitla_77:

(Start: 14 @60527 has 15 MA's), (Start: 23 @60620 has 275 MA's),

Gene: Inchworm_77 Start: 60607, Stop: 60843, Start Num: 23

Candidate Starts for Inchworm_77:

(Start: 14 @60511 has 15 MA's), (Start: 23 @60607 has 275 MA's), (24, 60766), (25, 60769),

Gene: Indlovu_75 Start: 62474, Stop: 62809, Start Num: 14

Candidate Starts for Indlovu_75:

(13, 62468), (Start: 14 @62474 has 15 MA's),

Gene: Inverness_74 Start: 60234, Stop: 60470, Start Num: 23

Candidate Starts for Inverness_74:

(Start: 14 @60141 has 15 MA's), (Start: 23 @60234 has 275 MA's), (24, 60393), (25, 60396),

Gene: Iridessa_78 Start: 60349, Stop: 60585, Start Num: 23

Candidate Starts for Iridessa_78:

(Start: 14 @60256 has 15 MA's), (Start: 23 @60349 has 275 MA's), (24, 60508), (25, 60511),

Gene: Iridoclysis_75 Start: 60518, Stop: 60754, Start Num: 23

Candidate Starts for Iridoclysis_75:

(Start: 14 @60425 has 15 MA's), (Start: 23 @60518 has 275 MA's),

Gene: IsaacEli_78 Start: 60865, Stop: 61101, Start Num: 23

Candidate Starts for IsaacEli_78:

(Start: 14 @60772 has 15 MA's), (Start: 23 @60865 has 275 MA's),

Gene: JAMaL_72 Start: 61620, Stop: 61910, Start Num: 17

Candidate Starts for JAMaL_72:

(7, 61551), (Start: 17 @61620 has 22 MA's), (Start: 20 @61659 has 1 MA's), (25, 61866),

Gene: JDog_75 Start: 60757, Stop: 60993, Start Num: 23

Candidate Starts for JDog_75:

(Start: 14 @60661 has 15 MA's), (Start: 23 @60757 has 275 MA's), (24, 60916), (25, 60919),

Gene: JacAttac_76 Start: 60231, Stop: 60467, Start Num: 23

Candidate Starts for JacAttac_76:

(Start: 14 @60138 has 15 MA's), (Start: 23 @60231 has 275 MA's),

Gene: JaguarMi_73 Start: 62960, Stop: 63271, Start Num: 17

Candidate Starts for JaguarMi_73:

(3, 62711), (4, 62789), (7, 62891), (Start: 17 @62960 has 22 MA's), (Start: 20 @62999 has 1 MA's), (25, 63206),

Gene: JakeO_77 Start: 60482, Stop: 60718, Start Num: 23

Candidate Starts for JakeO_77:

(Start: 14 @60389 has 15 MA's), (Start: 23 @60482 has 275 MA's), (24, 60641), (25, 60644),

Gene: JangoPhett_74 Start: 60572, Stop: 60808, Start Num: 23

Candidate Starts for JangoPhett_74:

(Start: 14 @60479 has 15 MA's), (Start: 23 @60572 has 275 MA's),

Gene: Jesabah_78 Start: 61337, Stop: 61573, Start Num: 23

Candidate Starts for Jesabah_78:

(Start: 14 @61244 has 15 MA's), (Start: 23 @61337 has 275 MA's), (24, 61496), (25, 61499),

Gene: Jillium_77 Start: 60925, Stop: 61161, Start Num: 23

Candidate Starts for Jillium_77:

(Start: 14 @60832 has 15 MA's), (Start: 23 @60925 has 275 MA's), (24, 61084), (25, 61087),

Gene: Jiminy_76 Start: 60312, Stop: 60548, Start Num: 23

Candidate Starts for Jiminy_76:

(Start: 14 @60219 has 15 MA's), (19, 60234), (Start: 23 @60312 has 275 MA's), (24, 60471), (25, 60474),

Gene: Jiraiya_77 Start: 60517, Stop: 60753, Start Num: 23

Candidate Starts for Jiraiya_77:

(Start: 14 @60421 has 15 MA's), (Start: 23 @60517 has 275 MA's), (24, 60676), (25, 60679),

Gene: JoyceMaria_73 Start: 62031, Stop: 62342, Start Num: 17

Candidate Starts for JoyceMaria_73:

(Start: 17 @62031 has 22 MA's), (Start: 20 @62070 has 1 MA's), (25, 62277),

Gene: KLucky39_74 Start: 60121, Stop: 60357, Start Num: 23

Candidate Starts for KLucky39_74:

(Start: 14 @60028 has 15 MA's), (Start: 23 @60121 has 275 MA's),

Gene: Kahve_77 Start: 60930, Stop: 61166, Start Num: 23

Candidate Starts for Kahve_77:

(Start: 14 @60837 has 15 MA's), (Start: 23 @60930 has 275 MA's), (24, 61089), (25, 61092),

Gene: Kailash_74 Start: 60631, Stop: 60867, Start Num: 23
Candidate Starts for Kailash_74:
(Start: 14 @60535 has 15 MA's), (Start: 23 @60631 has 275 MA's), (24, 60790), (25, 60793),

Gene: Karn_76 Start: 60487, Stop: 60723, Start Num: 23
Candidate Starts for Karn_76:
(Start: 14 @60394 has 15 MA's), (Start: 23 @60487 has 275 MA's), (24, 60646), (25, 60649),

Gene: Katniss_78 Start: 60367, Stop: 60603, Start Num: 23
Candidate Starts for Katniss_78:
(Start: 14 @60274 has 15 MA's), (Start: 23 @60367 has 275 MA's), (24, 60526), (25, 60529),

Gene: Keitherie_79 Start: 60989, Stop: 61225, Start Num: 23
Candidate Starts for Keitherie_79:
(Start: 14 @60896 has 15 MA's), (Start: 23 @60989 has 275 MA's), (24, 61148), (25, 61151),

Gene: Khan1_76 Start: 60709, Stop: 60945, Start Num: 23
Candidate Starts for Khan1_76:
(Start: 14 @60616 has 15 MA's), (Start: 23 @60709 has 275 MA's), (24, 60868), (25, 60871),

Gene: Kikipoo_78 Start: 60865, Stop: 61101, Start Num: 23
Candidate Starts for Kikipoo_78:
(Start: 14 @60772 has 15 MA's), (Start: 23 @60865 has 275 MA's),

Gene: Kimbrough_77 Start: 60810, Stop: 61046, Start Num: 23
Candidate Starts for Kimbrough_77:
(Start: 14 @60717 has 15 MA's), (Start: 23 @60810 has 275 MA's), (24, 60969), (25, 60972),

Gene: KingTut_67 Start: 56977, Stop: 57213, Start Num: 23
Candidate Starts for KingTut_67:
(Start: 14 @56884 has 15 MA's), (Start: 23 @56977 has 275 MA's), (24, 57136), (25, 57139),

Gene: KingVeVeVe_74 Start: 59771, Stop: 60007, Start Num: 23
Candidate Starts for KingVeVeVe_74:
(Start: 14 @59678 has 15 MA's), (Start: 23 @59771 has 275 MA's),

Gene: KlimbOn_75 Start: 60245, Stop: 60481, Start Num: 23
Candidate Starts for KlimbOn_75:
(Start: 14 @60152 has 15 MA's), (Start: 23 @60245 has 275 MA's), (24, 60404), (25, 60407),

Gene: Kloppinator_76 Start: 60402, Stop: 60638, Start Num: 23
Candidate Starts for Kloppinator_76:
(Start: 14 @60309 has 15 MA's), (Start: 23 @60402 has 275 MA's),

Gene: Kwadwo_75 Start: 60237, Stop: 60473, Start Num: 23
Candidate Starts for Kwadwo_75:
(Start: 14 @60144 has 15 MA's), (Start: 23 @60237 has 275 MA's), (24, 60396), (25, 60399),

Gene: Kwksand96_77 Start: 60501, Stop: 60737, Start Num: 23
Candidate Starts for Kwksand96_77:
(Start: 14 @60408 has 15 MA's), (Start: 23 @60501 has 275 MA's),

Gene: Labeouficaum_76 Start: 60311, Stop: 60547, Start Num: 23

Candidate Starts for Labeouficaum_76:

(Start: 14 @60218 has 15 MA's), (Start: 23 @60311 has 275 MA's), (24, 60470), (25, 60473),

Gene: Lambano_71 Start: 60906, Stop: 61217, Start Num: 17

Candidate Starts for Lambano_71:

(Start: 11 @60870 has 2 MA's), (Start: 17 @60906 has 22 MA's), (Start: 20 @60945 has 1 MA's), (25, 61152),

Gene: Larson_78 Start: 60579, Stop: 60815, Start Num: 23

Candidate Starts for Larson_78:

(Start: 14 @60486 has 15 MA's), (Start: 23 @60579 has 275 MA's), (24, 60738), (25, 60741),

Gene: LasagnaCat_77 Start: 60616, Stop: 60852, Start Num: 23

Candidate Starts for LasagnaCat_77:

(Start: 14 @60523 has 15 MA's), (Start: 23 @60616 has 275 MA's), (24, 60775), (25, 60778),

Gene: Lasso_75 Start: 60467, Stop: 60703, Start Num: 23

Candidate Starts for Lasso_75:

(Start: 14 @60371 has 15 MA's), (Start: 23 @60467 has 275 MA's), (24, 60626), (25, 60629),

Gene: LeeLot_75 Start: 60820, Stop: 61056, Start Num: 23

Candidate Starts for LeeLot_75:

(Start: 14 @60727 has 15 MA's), (Start: 23 @60820 has 275 MA's), (24, 60979), (25, 60982),

Gene: Lego3393_74 Start: 60937, Stop: 61173, Start Num: 23

Candidate Starts for Lego3393_74:

(Start: 14 @60844 has 15 MA's), (Start: 23 @60937 has 275 MA's), (24, 61096), (25, 61099),

Gene: Legolas_77 Start: 60559, Stop: 60795, Start Num: 23

Candidate Starts for Legolas_77:

(Start: 14 @60466 has 15 MA's), (Start: 23 @60559 has 275 MA's),

Gene: Lehmann_78 Start: 60796, Stop: 61032, Start Num: 23

Candidate Starts for Lehmann_78:

(Start: 14 @60700 has 15 MA's), (Start: 23 @60796 has 275 MA's), (24, 60955), (25, 60958),

Gene: LeiMonet_79 Start: 60697, Stop: 60933, Start Num: 23

Candidate Starts for LeiMonet_79:

(Start: 14 @60604 has 15 MA's), (Start: 23 @60697 has 275 MA's), (24, 60856), (25, 60859),

Gene: LemonSlice_76 Start: 60214, Stop: 60450, Start Num: 23

Candidate Starts for LemonSlice_76:

(Start: 14 @60118 has 15 MA's), (Start: 23 @60214 has 275 MA's), (24, 60373), (25, 60376),

Gene: LilMcDreamy_74 Start: 61526, Stop: 61819, Start Num: 18

Candidate Starts for LilMcDreamy_74:

(Start: 18 @61526 has 1 MA's),

Gene: LittleDigger_72 Start: 60831, Stop: 61142, Start Num: 17

Candidate Starts for LittleDigger_72:

(Start: 11 @60795 has 2 MA's), (Start: 17 @60831 has 22 MA's), (Start: 20 @60870 has 1 MA's), (25, 61077),

Gene: Lolalove_74 Start: 61861, Stop: 62175, Start Num: 17
Candidate Starts for Lolalove_74:
(4, 61690), (7, 61792), (Start: 17 @61861 has 22 MA's), (Start: 20 @61900 has 1 MA's), (25, 62107),

Gene: Longacauda_77 Start: 60594, Stop: 60830, Start Num: 23
Candidate Starts for Longacauda_77:
(Start: 14 @60501 has 15 MA's), (Start: 23 @60594 has 275 MA's),

Gene: Lopsy_73 Start: 59921, Stop: 60157, Start Num: 23
Candidate Starts for Lopsy_73:
(Start: 14 @59825 has 15 MA's), (Start: 23 @59921 has 275 MA's), (24, 60080), (25, 60083),

Gene: LostAndPhound_75 Start: 60767, Stop: 61003, Start Num: 23
Candidate Starts for LostAndPhound_75:
(Start: 14 @60671 has 15 MA's), (Start: 20 @60713 has 1 MA's), (Start: 23 @60767 has 275 MA's),
(24, 60926), (25, 60929),

Gene: LuckyMarjie_73 Start: 59976, Stop: 60212, Start Num: 23
Candidate Starts for LuckyMarjie_73:
(Start: 14 @59883 has 15 MA's), (Start: 23 @59976 has 275 MA's),

Gene: Lulumae_73 Start: 59863, Stop: 60192, Start Num: 14
Candidate Starts for Lulumae_73:
(Start: 14 @59863 has 15 MA's), (Start: 23 @59956 has 275 MA's), (24, 60115), (25, 60118),

Gene: Lulwa_73 Start: 59588, Stop: 59824, Start Num: 23
Candidate Starts for Lulwa_73:
(Start: 14 @59495 has 15 MA's), (Start: 23 @59588 has 275 MA's), (24, 59747), (25, 59750),

Gene: Lumine_77 Start: 60414, Stop: 60650, Start Num: 23
Candidate Starts for Lumine_77:
(Start: 14 @60318 has 15 MA's), (Start: 23 @60414 has 275 MA's),

Gene: MRabcd_76 Start: 60692, Stop: 60928, Start Num: 23
Candidate Starts for MRabcd_76:
(Start: 14 @60596 has 15 MA's), (Start: 23 @60692 has 275 MA's), (24, 60851), (25, 60854),

Gene: Mag7_74 Start: 60175, Stop: 60411, Start Num: 23
Candidate Starts for Mag7_74:
(Start: 14 @60079 has 15 MA's), (Start: 23 @60175 has 275 MA's), (24, 60334), (25, 60337),

Gene: Magic8_75 Start: 60539, Stop: 60775, Start Num: 23
Candidate Starts for Magic8_75:
(Start: 14 @60443 has 15 MA's), (Start: 23 @60539 has 275 MA's),

Gene: Magpie_70 Start: 61485, Stop: 61796, Start Num: 17
Candidate Starts for Magpie_70:
(2, 61221), (3, 61236), (4, 61314), (7, 61416), (Start: 17 @61485 has 22 MA's), (Start: 20 @61524 has
1 MA's), (25, 61731),

Gene: Mana_74 Start: 60380, Stop: 60616, Start Num: 23
Candidate Starts for Mana_74:
(Start: 14 @60287 has 15 MA's), (Start: 23 @60380 has 275 MA's), (24, 60539), (25, 60542),

Gene: Manad_75 Start: 60509, Stop: 60745, Start Num: 23

Candidate Starts for Manad_75:

(Start: 14 @60413 has 15 MA's), (Start: 23 @60509 has 275 MA's), (24, 60668), (25, 60671),

Gene: Maru_76 Start: 60819, Stop: 61055, Start Num: 23

Candidate Starts for Maru_76:

(Start: 14 @60726 has 15 MA's), (Start: 23 @60819 has 275 MA's), (24, 60978), (25, 60981),

Gene: Maskar_77 Start: 60620, Stop: 60856, Start Num: 23

Candidate Starts for Maskar_77:

(Start: 14 @60527 has 15 MA's), (Start: 23 @60620 has 275 MA's),

Gene: Matalotodo_75 Start: 61219, Stop: 61455, Start Num: 23

Candidate Starts for Matalotodo_75:

(Start: 14 @61126 has 15 MA's), (Start: 23 @61219 has 275 MA's), (24, 61378), (25, 61381),

Gene: Mcshane_75 Start: 60238, Stop: 60474, Start Num: 23

Candidate Starts for Mcshane_75:

(Start: 14 @60145 has 15 MA's), (Start: 23 @60238 has 275 MA's), (24, 60397), (25, 60400),

Gene: Mecca_76 Start: 60791, Stop: 61027, Start Num: 23

Candidate Starts for Mecca_76:

(Start: 14 @60698 has 15 MA's), (Start: 23 @60791 has 275 MA's), (24, 60950), (25, 60953),

Gene: Megamind20_76 Start: 60220, Stop: 60456, Start Num: 23

Candidate Starts for Megamind20_76:

(Start: 14 @60127 has 15 MA's), (Start: 23 @60220 has 275 MA's),

Gene: Megatron_77 Start: 60909, Stop: 61145, Start Num: 23

Candidate Starts for Megatron_77:

(Start: 14 @60816 has 15 MA's), (Start: 23 @60909 has 275 MA's), (24, 61068), (25, 61071),

Gene: Melc17_73 Start: 60847, Stop: 61083, Start Num: 23

Candidate Starts for Melc17_73:

(Start: 14 @60754 has 15 MA's), (Start: 23 @60847 has 275 MA's), (24, 61006), (25, 61009),

Gene: MelsMeow_75 Start: 60499, Stop: 60735, Start Num: 23

Candidate Starts for MelsMeow_75:

(Start: 14 @60406 has 15 MA's), (Start: 23 @60499 has 275 MA's), (24, 60658), (25, 60661),

Gene: Mesh1_77 Start: 60955, Stop: 61191, Start Num: 23

Candidate Starts for Mesh1_77:

(Start: 14 @60862 has 15 MA's), (Start: 23 @60955 has 275 MA's), (24, 61114), (25, 61117),

Gene: Mesmerelda_75 Start: 60790, Stop: 61026, Start Num: 23

Candidate Starts for Mesmerelda_75:

(Start: 14 @60697 has 15 MA's), (Start: 23 @60790 has 275 MA's), (24, 60949), (25, 60952),

Gene: MichaelPhcott_74 Start: 60172, Stop: 60408, Start Num: 23

Candidate Starts for MichaelPhcott_74:

(Start: 14 @60076 has 15 MA's), (Start: 23 @60172 has 275 MA's), (24, 60331), (25, 60334),

Gene: Mikota_73 Start: 59676, Stop: 60005, Start Num: 14
Candidate Starts for Mikota_73:
(Start: 14 @59676 has 15 MA's), (Start: 23 @59769 has 275 MA's),

Gene: MiniBoss_73 Start: 59544, Stop: 59780, Start Num: 23
Candidate Starts for MiniBoss_73:
(Start: 14 @59451 has 15 MA's), (Start: 23 @59544 has 275 MA's),

Gene: MitKao_76 Start: 60392, Stop: 60628, Start Num: 23
Candidate Starts for MitKao_76:
(Start: 14 @60296 has 15 MA's), (Start: 23 @60392 has 275 MA's), (24, 60551), (25, 60554),

Gene: Mithril_72 Start: 61860, Stop: 62174, Start Num: 17
Candidate Starts for Mithril_72:
(4, 61689), (7, 61791), (Start: 17 @61860 has 22 MA's), (Start: 20 @61899 has 1 MA's), (25, 62106),

Gene: Morgushi_74 Start: 60207, Stop: 60443, Start Num: 23
Candidate Starts for Morgushi_74:
(Start: 14 @60111 has 15 MA's), (Start: 23 @60207 has 275 MA's), (24, 60366), (25, 60369),

Gene: Morty_77 Start: 60800, Stop: 61036, Start Num: 23
Candidate Starts for Morty_77:
(Start: 14 @60707 has 15 MA's), (Start: 23 @60800 has 275 MA's), (24, 60959), (25, 60962),

Gene: Mosaic_74 Start: 60384, Stop: 60620, Start Num: 23
Candidate Starts for Mosaic_74:
(Start: 14 @60291 has 15 MA's), (Start: 23 @60384 has 275 MA's), (24, 60543), (25, 60546),

Gene: MrPhizzler_79 Start: 60686, Stop: 60922, Start Num: 23
Candidate Starts for MrPhizzler_79:
(Start: 14 @60593 has 15 MA's), (Start: 23 @60686 has 275 MA's), (24, 60845), (25, 60848),

Gene: Mudslide_73 Start: 62093, Stop: 62404, Start Num: 17
Candidate Starts for Mudslide_73:
(Start: 17 @62093 has 22 MA's), (Start: 20 @62132 has 1 MA's), (25, 62339),

Gene: Mulan_75 Start: 60432, Stop: 60668, Start Num: 23
Candidate Starts for Mulan_75:
(Start: 14 @60339 has 15 MA's), (Start: 23 @60432 has 275 MA's), (24, 60591), (25, 60594),

Gene: Murdoc_73 Start: 60496, Stop: 60732, Start Num: 23
Candidate Starts for Murdoc_73:
(Start: 14 @60400 has 15 MA's), (Start: 23 @60496 has 275 MA's), (24, 60655), (25, 60658),

Gene: Mutante_77 Start: 60394, Stop: 60630, Start Num: 23
Candidate Starts for Mutante_77:
(Start: 14 @60301 has 15 MA's), (Start: 23 @60394 has 275 MA's), (24, 60553), (25, 60556),

Gene: Mysterious_74 Start: 61457, Stop: 61762, Start Num: 16
Candidate Starts for Mysterious_74:
(Start: 16 @61457 has 10 MA's),

Gene: Nacho_0079 Start: 61291, Stop: 61527, Start Num: 23

Candidate Starts for Nacho_0079:

(Start: 14 @61198 has 15 MA's), (Start: 23 @61291 has 275 MA's),

Gene: Nanao_72 Start: 60860, Stop: 61207, Start Num: 11

Candidate Starts for Nanao_72:

(Start: 11 @60860 has 2 MA's), (Start: 17 @60896 has 22 MA's), (Start: 20 @60935 has 1 MA's), (25, 61142),

Gene: Nangang_75 Start: 61582, Stop: 61881, Start Num: 16

Candidate Starts for Nangang_75:

(6, 61495), (12, 61546), (Start: 16 @61582 has 10 MA's),

Gene: Nathan_77 Start: 60749, Stop: 60985, Start Num: 23

Candidate Starts for Nathan_77:

(Start: 14 @60656 has 15 MA's), (Start: 23 @60749 has 275 MA's), (24, 60908), (25, 60911),

Gene: Nehemiah_74 Start: 61260, Stop: 61565, Start Num: 16

Candidate Starts for Nehemiah_74:

(Start: 16 @61260 has 10 MA's),

Gene: Newman_74 Start: 60568, Stop: 60804, Start Num: 23

Candidate Starts for Newman_74:

(Start: 14 @60475 has 15 MA's), (Start: 23 @60568 has 275 MA's), (24, 60727), (25, 60730),

Gene: NiaNia_77 Start: 60267, Stop: 60503, Start Num: 23

Candidate Starts for NiaNia_77:

(Start: 14 @60174 has 15 MA's), (Start: 23 @60267 has 275 MA's), (24, 60426), (25, 60429),

Gene: Nicole21_77 Start: 60527, Stop: 60763, Start Num: 23

Candidate Starts for Nicole21_77:

(Start: 14 @60434 has 15 MA's), (Start: 23 @60527 has 275 MA's),

Gene: Nova1_76 Start: 60373, Stop: 60609, Start Num: 23

Candidate Starts for Nova1_76:

(Start: 14 @60280 has 15 MA's), (Start: 23 @60373 has 275 MA's), (24, 60532), (25, 60535),

Gene: Numberten_75 Start: 60506, Stop: 60742, Start Num: 23

Candidate Starts for Numberten_75:

(Start: 14 @60410 has 15 MA's), (Start: 23 @60506 has 275 MA's),

Gene: Nyala_75 Start: 60245, Stop: 60481, Start Num: 23

Candidate Starts for Nyala_75:

(Start: 14 @60152 has 15 MA's), (Start: 23 @60245 has 275 MA's),

Gene: OSmaximus_76 Start: 61108, Stop: 61437, Start Num: 14

Candidate Starts for OSmaximus_76:

(Start: 14 @61108 has 15 MA's), (Start: 23 @61201 has 275 MA's), (24, 61360), (25, 61363),

Gene: Olak_75 Start: 60398, Stop: 60634, Start Num: 23

Candidate Starts for Olak_75:

(Start: 14 @60305 has 15 MA's), (Start: 23 @60398 has 275 MA's), (24, 60557), (25, 60560),

Gene: Oline_75 Start: 60304, Stop: 60633, Start Num: 14

Candidate Starts for Oline_75:

(Start: 14 @60304 has 15 MA's), (Start: 23 @60397 has 275 MA's), (24, 60556), (25, 60559),

Gene: Olive_74 Start: 60464, Stop: 60700, Start Num: 23

Candidate Starts for Olive_74:

(Start: 14 @60371 has 15 MA's), (Start: 23 @60464 has 275 MA's), (24, 60623), (25, 60626),

Gene: OliverWalter_76 Start: 60717, Stop: 60953, Start Num: 23

Candidate Starts for OliverWalter_76:

(Start: 14 @60624 has 15 MA's), (Start: 23 @60717 has 275 MA's), (24, 60876), (25, 60879),

Gene: Omniscient_77 Start: 61099, Stop: 61335, Start Num: 23

Candidate Starts for Omniscient_77:

(Start: 14 @61006 has 15 MA's), (Start: 23 @61099 has 275 MA's), (24, 61258), (25, 61261),

Gene: OneBrain_79 Start: 60481, Stop: 60717, Start Num: 23

Candidate Starts for OneBrain_79:

(Start: 14 @60388 has 15 MA's), (Start: 23 @60481 has 275 MA's), (24, 60640), (25, 60643),

Gene: Oosterbaan_76 Start: 60635, Stop: 60871, Start Num: 23

Candidate Starts for Oosterbaan_76:

(Start: 14 @60542 has 15 MA's), (Start: 23 @60635 has 275 MA's),

Gene: Orfeu_75 Start: 60757, Stop: 60993, Start Num: 23

Candidate Starts for Orfeu_75:

(Start: 14 @60661 has 15 MA's), (Start: 23 @60757 has 275 MA's),

Gene: Orion_76 Start: 60252, Stop: 60581, Start Num: 14

Candidate Starts for Orion_76:

(Start: 14 @60252 has 15 MA's), (Start: 23 @60345 has 275 MA's), (24, 60504), (25, 60507),

Gene: Orwigg_75 Start: 60184, Stop: 60420, Start Num: 23

Candidate Starts for Orwigg_75:

(Start: 14 @60091 has 15 MA's), (Start: 23 @60184 has 275 MA's), (24, 60343), (25, 60346),

Gene: PG1_76 Start: 60823, Stop: 61152, Start Num: 14

Candidate Starts for PG1_76:

(Start: 14 @60823 has 15 MA's), (Start: 23 @60916 has 275 MA's), (24, 61075), (25, 61078),

Gene: Pacifista_75 Start: 60246, Stop: 60482, Start Num: 23

Candidate Starts for Pacifista_75:

(Start: 14 @60153 has 15 MA's), (Start: 23 @60246 has 275 MA's), (24, 60405), (25, 60408),

Gene: PallasAthena_77 Start: 60229, Stop: 60465, Start Num: 23

Candidate Starts for PallasAthena_77:

(Start: 14 @60133 has 15 MA's), (Start: 23 @60229 has 275 MA's),

Gene: PenguinLover67_76 Start: 61882, Stop: 62211, Start Num: 14

Candidate Starts for PenguinLover67_76:

(Start: 14 @61882 has 15 MA's), (Start: 20 @61939 has 1 MA's), (22, 61984), (Start: 23 @61990 has 275 MA's), (25, 62146),

Gene: Phamished_76 Start: 60415, Stop: 60651, Start Num: 23

Candidate Starts for Phamished_76:

(Start: 14 @60322 has 15 MA's), (Start: 23 @60415 has 275 MA's), (24, 60574), (25, 60577),

Gene: Phareon_74 Start: 59935, Stop: 60171, Start Num: 23

Candidate Starts for Phareon_74:

(Start: 14 @59842 has 15 MA's), (Start: 23 @59935 has 275 MA's), (24, 60094), (25, 60097),

Gene: PhatCats2014_77 Start: 60921, Stop: 61157, Start Num: 23

Candidate Starts for PhatCats2014_77:

(Start: 14 @60828 has 15 MA's), (Start: 23 @60921 has 275 MA's),

Gene: PhatLouie_78 Start: 60769, Stop: 61005, Start Num: 23

Candidate Starts for PhatLouie_78:

(Start: 14 @60676 has 15 MA's), (Start: 23 @60769 has 275 MA's), (24, 60928), (25, 60931),

Gene: Phelemich_72 Start: 61326, Stop: 61631, Start Num: 16

Candidate Starts for Phelemich_72:

(Start: 9 @61269 has 1 MA's), (Start: 16 @61326 has 10 MA's),

Gene: PhenghisKhan_76 Start: 60389, Stop: 60625, Start Num: 23

Candidate Starts for PhenghisKhan_76:

(Start: 14 @60293 has 15 MA's), (Start: 23 @60389 has 275 MA's), (24, 60548), (25, 60551),

Gene: Pherdinand_77 Start: 60637, Stop: 60873, Start Num: 23

Candidate Starts for Pherdinand_77:

(Start: 14 @60544 has 15 MA's), (Start: 23 @60637 has 275 MA's), (24, 60796), (25, 60799),

Gene: Phergie_76 Start: 60381, Stop: 60617, Start Num: 23

Candidate Starts for Phergie_76:

(Start: 14 @60285 has 15 MA's), (Start: 23 @60381 has 275 MA's), (24, 60540), (25, 60543),

Gene: Phipps_75 Start: 60471, Stop: 60707, Start Num: 23

Candidate Starts for Phipps_75:

(Start: 14 @60375 has 15 MA's), (Start: 23 @60471 has 275 MA's),

Gene: Phleuron_74 Start: 60205, Stop: 60441, Start Num: 23

Candidate Starts for Phleuron_74:

(Start: 14 @60112 has 15 MA's), (Start: 23 @60205 has 275 MA's), (24, 60364), (25, 60367),

Gene: PhrankReynolds_75 Start: 60386, Stop: 60622, Start Num: 23

Candidate Starts for PhrankReynolds_75:

(Start: 14 @60290 has 15 MA's), (Start: 23 @60386 has 275 MA's), (24, 60545), (25, 60548),

Gene: PhrodoBaggins_78 Start: 60777, Stop: 61013, Start Num: 23

Candidate Starts for PhrodoBaggins_78:

(Start: 14 @60684 has 15 MA's), (Start: 23 @60777 has 275 MA's),

Gene: Phunky_74 Start: 60268, Stop: 60504, Start Num: 23

Candidate Starts for Phunky_74:

(Start: 14 @60175 has 15 MA's), (Start: 23 @60268 has 275 MA's), (24, 60427), (25, 60430),

Gene: Piglet_0076 Start: 60893, Stop: 61129, Start Num: 23

Candidate Starts for Piglet_0076:

(Start: 14 @60800 has 15 MA's), (Start: 23 @60893 has 275 MA's), (24, 61052), (25, 61055),

Gene: PinheadLarry_75 Start: 60544, Stop: 60780, Start Num: 23

Candidate Starts for PinheadLarry_75:

(Start: 14 @60451 has 15 MA's), (Start: 23 @60544 has 275 MA's), (24, 60703), (25, 60706),

Gene: Pinkman_76 Start: 60495, Stop: 60731, Start Num: 23

Candidate Starts for Pinkman_76:

(Start: 14 @60399 has 15 MA's), (Start: 23 @60495 has 275 MA's), (24, 60654), (25, 60657),

Gene: Pipsqueak_73 Start: 60224, Stop: 60460, Start Num: 23

Candidate Starts for Pipsqueak_73:

(Start: 14 @60131 has 15 MA's), (Start: 23 @60224 has 275 MA's), (24, 60383), (25, 60386),

Gene: Placalicious_75 Start: 61259, Stop: 61495, Start Num: 23

Candidate Starts for Placalicious_75:

(Start: 14 @61166 has 15 MA's), (Start: 23 @61259 has 275 MA's), (24, 61418), (25, 61421),

Gene: Plata_75 Start: 60483, Stop: 60719, Start Num: 23

Candidate Starts for Plata_75:

(Start: 14 @60387 has 15 MA's), (Start: 23 @60483 has 275 MA's), (24, 60642), (25, 60645),

Gene: Plmatters_74 Start: 60221, Stop: 60457, Start Num: 23

Candidate Starts for Plmatters_74:

(Start: 14 @60128 has 15 MA's), (Start: 23 @60221 has 275 MA's),

Gene: Podrick_75 Start: 60305, Stop: 60541, Start Num: 23

Candidate Starts for Podrick_75:

(Start: 14 @60209 has 15 MA's), (Start: 23 @60305 has 275 MA's),

Gene: Pops_74 Start: 60234, Stop: 60470, Start Num: 23

Candidate Starts for Pops_74:

(Start: 14 @60141 has 15 MA's), (Start: 23 @60234 has 275 MA's),

Gene: Poster_71 Start: 60897, Stop: 61208, Start Num: 17

Candidate Starts for Poster_71:

(Start: 11 @60861 has 2 MA's), (Start: 17 @60897 has 22 MA's), (Start: 20 @60936 has 1 MA's), (25, 61143),

Gene: Potter_72 Start: 60227, Stop: 60463, Start Num: 23

Candidate Starts for Potter_72:

(Start: 14 @60134 has 15 MA's), (Start: 23 @60227 has 275 MA's), (24, 60386), (25, 60389),

Gene: Prickles_77 Start: 60749, Stop: 60985, Start Num: 23

Candidate Starts for Prickles_77:

(Start: 14 @60656 has 15 MA's), (Start: 23 @60749 has 275 MA's), (24, 60908), (25, 60911),

Gene: Prince_72 Start: 61991, Stop: 62302, Start Num: 17

Candidate Starts for Prince_72:

(Start: 17 @61991 has 22 MA's), (Start: 20 @62030 has 1 MA's), (25, 62234),

Gene: ProfessorX_74 Start: 60265, Stop: 60501, Start Num: 23

Candidate Starts for ProfessorX_74:

(Start: 14 @60172 has 15 MA's), (Start: 23 @60265 has 275 MA's), (24, 60424), (25, 60427),

Gene: Puhltonio_74 Start: 60494, Stop: 60730, Start Num: 23

Candidate Starts for Puhltonio_74:

(Start: 14 @60398 has 15 MA's), (Start: 23 @60494 has 275 MA's), (24, 60653), (25, 60656),

Gene: QueenBeane_76 Start: 60540, Stop: 60776, Start Num: 23

Candidate Starts for QueenBeane_76:

(Start: 14 @60444 has 15 MA's), (Start: 23 @60540 has 275 MA's), (24, 60699), (25, 60702),

Gene: QueenPie_67 Start: 60754, Stop: 61062, Start Num: 17

Candidate Starts for QueenPie_67:

(Start: 17 @60754 has 22 MA's), (Start: 20 @60793 has 1 MA's), (25, 61000), (26, 61012),

Gene: Quesadilla_76 Start: 62243, Stop: 62560, Start Num: 14

Candidate Starts for Quesadilla_76:

(Start: 14 @62243 has 15 MA's), (22, 62336), (Start: 23 @62342 has 275 MA's),

Gene: Quisquilliae_78 Start: 60561, Stop: 60797, Start Num: 23

Candidate Starts for Quisquilliae_78:

(Start: 14 @60465 has 15 MA's), (Start: 23 @60561 has 275 MA's),

Gene: RawrgerThat_73 Start: 61689, Stop: 62000, Start Num: 17

Candidate Starts for RawrgerThat_73:

(4, 61518), (7, 61620), (Start: 17 @61689 has 22 MA's), (Start: 20 @61728 has 1 MA's), (25, 61935),

Gene: Reccee_77 Start: 61502, Stop: 61816, Start Num: 16

Candidate Starts for Reccee_77:

(6, 61415), (12, 61466), (Start: 16 @61502 has 10 MA's),

Gene: RedMaple_76 Start: 60988, Stop: 61224, Start Num: 23

Candidate Starts for RedMaple_76:

(Start: 14 @60895 has 15 MA's), (Start: 23 @60988 has 275 MA's), (24, 61147), (25, 61150),

Gene: RedRaider89_75 Start: 60676, Stop: 60912, Start Num: 23

Candidate Starts for RedRaider89_75:

(Start: 14 @60583 has 15 MA's), (Start: 23 @60676 has 275 MA's), (24, 60835), (25, 60838),

Gene: Renkei_72 Start: 60789, Stop: 61136, Start Num: 11

Candidate Starts for Renkei_72:

(Start: 11 @60789 has 2 MA's), (Start: 17 @60825 has 22 MA's), (Start: 20 @60864 has 1 MA's), (25, 61071),

Gene: Reprobate_74 Start: 61274, Stop: 61636, Start Num: 9

Candidate Starts for Reprobate_74:

(Start: 9 @61274 has 1 MA's), (Start: 16 @61331 has 10 MA's),

Gene: Rich_74 Start: 62199, Stop: 62513, Start Num: 16

Candidate Starts for Rich_74:

(12, 62163), (Start: 16 @62199 has 10 MA's),

Gene: Ricotta_76 Start: 60231, Stop: 60467, Start Num: 23

Candidate Starts for Ricotta_76:

(Start: 14 @60135 has 15 MA's), (Start: 23 @60231 has 275 MA's),

Gene: Riggan_77 Start: 60557, Stop: 60793, Start Num: 23

Candidate Starts for Riggan_77:

(Start: 14 @60464 has 15 MA's), (Start: 23 @60557 has 275 MA's), (24, 60716), (25, 60719),

Gene: Rimu_76 Start: 60707, Stop: 60943, Start Num: 23

Candidate Starts for Rimu_76:

(Start: 14 @60614 has 15 MA's), (Start: 23 @60707 has 275 MA's), (24, 60866), (25, 60869),

Gene: Rita130_75 Start: 61429, Stop: 61743, Start Num: 16

Candidate Starts for Rita130_75:

(6, 61342), (12, 61393), (Start: 16 @61429 has 10 MA's),

Gene: Riverton_75 Start: 60490, Stop: 60726, Start Num: 23

Candidate Starts for Riverton_75:

(Start: 14 @60397 has 15 MA's), (Start: 23 @60490 has 275 MA's), (24, 60649), (25, 60652),

Gene: Roliet_73 Start: 59592, Stop: 59828, Start Num: 23

Candidate Starts for Roliet_73:

(Start: 14 @59499 has 15 MA's), (Start: 23 @59592 has 275 MA's),

Gene: Roscoe_76 Start: 60677, Stop: 60913, Start Num: 23

Candidate Starts for Roscoe_76:

(Start: 14 @60584 has 15 MA's), (Start: 23 @60677 has 275 MA's), (24, 60836), (25, 60839),

Gene: Roy17_74 Start: 59863, Stop: 60192, Start Num: 14

Candidate Starts for Roy17_74:

(Start: 14 @59863 has 15 MA's), (Start: 23 @59956 has 275 MA's), (24, 60115), (25, 60118),

Gene: SDcharge11_75 Start: 59710, Stop: 59946, Start Num: 23

Candidate Starts for SDcharge11_75:

(Start: 14 @59617 has 15 MA's), (Start: 23 @59710 has 275 MA's),

Gene: SallyH_78 Start: 60509, Stop: 60745, Start Num: 23

Candidate Starts for SallyH_78:

(Start: 14 @60413 has 15 MA's), (Start: 23 @60509 has 275 MA's),

Gene: Samaymay_76 Start: 60540, Stop: 60776, Start Num: 23

Candidate Starts for Samaymay_76:

(Start: 14 @60444 has 15 MA's), (Start: 23 @60540 has 275 MA's), (24, 60699), (25, 60702),

Gene: SassyCat97_74 Start: 60220, Stop: 60456, Start Num: 23

Candidate Starts for SassyCat97_74:

(Start: 14 @60127 has 15 MA's), (Start: 23 @60220 has 275 MA's), (24, 60379), (25, 60382),

Gene: Schadenfreude_76 Start: 60129, Stop: 60365, Start Num: 23

Candidate Starts for Schadenfreude_76:

(Start: 14 @60036 has 15 MA's), (Start: 23 @60129 has 275 MA's), (24, 60288), (25, 60291),

Gene: Schueller_74 Start: 60492, Stop: 60728, Start Num: 23

Candidate Starts for Schueller_74:

(Start: 14 @60399 has 15 MA's), (Start: 23 @60492 has 275 MA's), (24, 60651), (25, 60654),

Gene: Scoot17C_77 Start: 60347, Stop: 60583, Start Num: 23

Candidate Starts for Scoot17C_77:

(Start: 14 @60254 has 15 MA's), (Start: 23 @60347 has 275 MA's), (24, 60506), (25, 60509),

Gene: Scrick_75 Start: 60229, Stop: 60465, Start Num: 23

Candidate Starts for Scrick_75:

(Start: 14 @60136 has 15 MA's), (Start: 23 @60229 has 275 MA's), (24, 60388), (25, 60391),

Gene: Selr12_77 Start: 60274, Stop: 60510, Start Num: 23

Candidate Starts for Selr12_77:

(Start: 14 @60181 has 15 MA's), (Start: 23 @60274 has 275 MA's), (24, 60433), (25, 60436),

Gene: Serendipitous_74 Start: 60885, Stop: 61214, Start Num: 16

Candidate Starts for Serendipitous_74:

(1, 60588), (5, 60726), (6, 60798), (12, 60849), (Start: 16 @60885 has 10 MA's), (21, 60948), (25, 61146),

Gene: Serendipity_76 Start: 60702, Stop: 60938, Start Num: 23

Candidate Starts for Serendipity_76:

(Start: 14 @60609 has 15 MA's), (Start: 23 @60702 has 275 MA's), (24, 60861), (25, 60864),

Gene: Serpentine_0077 Start: 60785, Stop: 61021, Start Num: 23

Candidate Starts for Serpentine_0077:

(Start: 14 @60692 has 15 MA's), (Start: 23 @60785 has 275 MA's), (24, 60944), (25, 60947),

Gene: ShadowBud_76 Start: 60558, Stop: 60794, Start Num: 23

Candidate Starts for ShadowBud_76:

(Start: 14 @60462 has 15 MA's), (Start: 23 @60558 has 275 MA's),

Gene: Sheila_72 Start: 59623, Stop: 59859, Start Num: 23

Candidate Starts for Sheila_72:

(Start: 14 @59530 has 15 MA's), (Start: 23 @59623 has 275 MA's),

Gene: Shenyu_76 Start: 61921, Stop: 62232, Start Num: 16

Candidate Starts for Shenyu_76:

(6, 61834), (12, 61885), (Start: 16 @61921 has 10 MA's),

Gene: ShiVal_74 Start: 60257, Stop: 60493, Start Num: 23

Candidate Starts for ShiVal_74:

(Start: 14 @60164 has 15 MA's), (Start: 23 @60257 has 275 MA's), (24, 60416), (25, 60419),

Gene: Sigman_76 Start: 60231, Stop: 60467, Start Num: 23

Candidate Starts for Sigman_76:

(Start: 14 @60138 has 15 MA's), (Start: 23 @60231 has 275 MA's),

Gene: SilverBell_77 Start: 60668, Stop: 60904, Start Num: 23

Candidate Starts for SilverBell_77:

(Start: 14 @60572 has 15 MA's), (Start: 23 @60668 has 275 MA's),

Gene: Simielle_75 Start: 60199, Stop: 60435, Start Num: 23

Candidate Starts for Simielle_75:

(Start: 14 @60106 has 15 MA's), (Start: 23 @60199 has 275 MA's),

Gene: SirBeauregard_77 Start: 60777, Stop: 61013, Start Num: 23
Candidate Starts for SirBeauregard_77:
(Start: 14 @60684 has 15 MA's), (Start: 23 @60777 has 275 MA's),

Gene: SirJeffery_74 Start: 61239, Stop: 61553, Start Num: 16
Candidate Starts for SirJeffery_74:
(6, 61152), (12, 61203), (Start: 16 @61239 has 10 MA's),

Gene: Skippy_77 Start: 60626, Stop: 60862, Start Num: 23
Candidate Starts for Skippy_77:
(Start: 14 @60533 has 15 MA's), (Start: 23 @60626 has 275 MA's), (24, 60785), (25, 60788),

Gene: Slatt_76 Start: 60513, Stop: 60749, Start Num: 23
Candidate Starts for Slatt_76:
(Start: 14 @60420 has 15 MA's), (Start: 23 @60513 has 275 MA's), (24, 60672), (25, 60675),

Gene: Soile_77 Start: 60751, Stop: 60987, Start Num: 23
Candidate Starts for Soile_77:
(Start: 14 @60658 has 15 MA's), (Start: 23 @60751 has 275 MA's), (24, 60910), (25, 60913),

Gene: Solosis_74 Start: 60218, Stop: 60454, Start Num: 23
Candidate Starts for Solosis_74:
(Start: 14 @60122 has 15 MA's), (Start: 23 @60218 has 275 MA's), (24, 60377), (25, 60380),

Gene: Sophia_74 Start: 60208, Stop: 60444, Start Num: 23
Candidate Starts for Sophia_74:
(Start: 14 @60115 has 15 MA's), (Start: 23 @60208 has 275 MA's), (24, 60367), (25, 60370),

Gene: Soto_73 Start: 59751, Stop: 59987, Start Num: 23
Candidate Starts for Soto_73:
(Start: 14 @59658 has 15 MA's), (Start: 23 @59751 has 275 MA's), (24, 59910), (25, 59913),

Gene: Spartan300_75 Start: 60469, Stop: 60705, Start Num: 23
Candidate Starts for Spartan300_75:
(Start: 14 @60376 has 15 MA's), (Start: 23 @60469 has 275 MA's), (24, 60628), (25, 60631),

Gene: Squid_75 Start: 60499, Stop: 60735, Start Num: 23
Candidate Starts for Squid_75:
(Start: 14 @60406 has 15 MA's), (Start: 23 @60499 has 275 MA's),

Gene: Squiggle_75 Start: 60224, Stop: 60460, Start Num: 23
Candidate Starts for Squiggle_75:
(Start: 14 @60131 has 15 MA's), (Start: 23 @60224 has 275 MA's), (24, 60383), (25, 60386),

Gene: Stinger_72 Start: 60638, Stop: 60928, Start Num: 17
Candidate Starts for Stinger_72:
(4, 60455), (10, 60590), (Start: 17 @60638 has 22 MA's), (Start: 20 @60677 has 1 MA's), (25, 60884),

Gene: Struggle_76 Start: 60319, Stop: 60555, Start Num: 23
Candidate Starts for Struggle_76:
(Start: 14 @60223 has 15 MA's), (Start: 23 @60319 has 275 MA's),

Gene: Suigeneris_77 Start: 61677, Stop: 61991, Start Num: 16

Candidate Starts for Suigeneris_77:

(6, 61590), (12, 61641), (Start: 16 @61677 has 10 MA's),

Gene: Surely_76 Start: 60789, Stop: 61025, Start Num: 23

Candidate Starts for Surely_76:

(Start: 14 @60696 has 15 MA's), (Start: 23 @60789 has 275 MA's), (24, 60948), (25, 60951),

Gene: Swiphy_78 Start: 60769, Stop: 61005, Start Num: 23

Candidate Starts for Swiphy_78:

(Start: 14 @60676 has 15 MA's), (Start: 23 @60769 has 275 MA's), (24, 60928), (25, 60931),

Gene: Swish_77 Start: 60652, Stop: 60888, Start Num: 23

Candidate Starts for Swish_77:

(Start: 14 @60559 has 15 MA's), (Start: 23 @60652 has 275 MA's), (24, 60811), (25, 60814),

Gene: TallGrassMM_75 Start: 60283, Stop: 60519, Start Num: 23

Candidate Starts for TallGrassMM_75:

(Start: 14 @60190 has 15 MA's), (Start: 23 @60283 has 275 MA's), (24, 60442), (25, 60445),

Gene: Taraxa_76 Start: 60115, Stop: 60351, Start Num: 23

Candidate Starts for Taraxa_76:

(Start: 14 @60022 has 15 MA's), (Start: 23 @60115 has 275 MA's), (24, 60274), (25, 60277),

Gene: Telesworld_74 Start: 60361, Stop: 60597, Start Num: 23

Candidate Starts for Telesworld_74:

(Start: 14 @60268 has 15 MA's), (Start: 23 @60361 has 275 MA's), (24, 60520), (25, 60523),

Gene: Thonko_85 Start: 62711, Stop: 62379, Start Num: 14

Candidate Starts for Thonko_85:

(Start: 14 @62711 has 15 MA's), (25, 62444),

Gene: Thora_75 Start: 60738, Stop: 60974, Start Num: 23

Candidate Starts for Thora_75:

(Start: 14 @60645 has 15 MA's), (Start: 23 @60738 has 275 MA's),

Gene: ThreeOh3D2_78 Start: 60912, Stop: 61148, Start Num: 23

Candidate Starts for ThreeOh3D2_78:

(Start: 14 @60819 has 15 MA's), (Start: 23 @60912 has 275 MA's), (24, 61071), (25, 61074),

Gene: Thunderbird_76 Start: 60481, Stop: 60717, Start Num: 23

Candidate Starts for Thunderbird_76:

(Start: 14 @60385 has 15 MA's), (Start: 23 @60481 has 275 MA's), (24, 60640), (25, 60643),

Gene: Timmi_75 Start: 60255, Stop: 60491, Start Num: 23

Candidate Starts for Timmi_75:

(Start: 14 @60159 has 15 MA's), (Start: 23 @60255 has 275 MA's), (24, 60414), (25, 60417),

Gene: TomBombadil_76 Start: 60782, Stop: 61018, Start Num: 23

Candidate Starts for TomBombadil_76:

(Start: 14 @60689 has 15 MA's), (Start: 23 @60782 has 275 MA's), (24, 60941), (25, 60944),

Gene: Tomlarah_77 Start: 61090, Stop: 61326, Start Num: 23

Candidate Starts for Tomlarah_77:

(Start: 14 @60997 has 15 MA's), (Start: 23 @61090 has 275 MA's), (24, 61249), (25, 61252),

Gene: Toni_76 Start: 60685, Stop: 60921, Start Num: 23

Candidate Starts for Toni_76:

(Start: 14 @60592 has 15 MA's), (Start: 23 @60685 has 275 MA's), (24, 60844), (25, 60847),

Gene: TooFast2Furius_75 Start: 60472, Stop: 60708, Start Num: 23

Candidate Starts for TooFast2Furius_75:

(Start: 14 @60379 has 15 MA's), (Start: 23 @60472 has 275 MA's), (24, 60631), (25, 60634),

Gene: Tooj_73 Start: 59916, Stop: 60152, Start Num: 23

Candidate Starts for Tooj_73:

(Start: 14 @59823 has 15 MA's), (Start: 23 @59916 has 275 MA's), (24, 60075), (25, 60078),

Gene: Triad_77 Start: 60098, Stop: 60334, Start Num: 23

Candidate Starts for Triad_77:

(Start: 14 @60005 has 15 MA's), (Start: 23 @60098 has 275 MA's), (24, 60257), (25, 60260),

Gene: True_74 Start: 60225, Stop: 60461, Start Num: 23

Candidate Starts for True_74:

(Start: 14 @60129 has 15 MA's), (Start: 23 @60225 has 275 MA's), (24, 60384), (25, 60387),

Gene: Trypo_77 Start: 60940, Stop: 61176, Start Num: 23

Candidate Starts for Trypo_77:

(Start: 14 @60847 has 15 MA's), (Start: 23 @60940 has 275 MA's), (24, 61099), (25, 61102),

Gene: TyrionL_76 Start: 60311, Stop: 60547, Start Num: 23

Candidate Starts for TyrionL_76:

(Start: 14 @60218 has 15 MA's), (Start: 23 @60311 has 275 MA's), (24, 60470), (25, 60473),

Gene: UAch1_77 Start: 60582, Stop: 60818, Start Num: 23

Candidate Starts for UAch1_77:

(Start: 14 @60489 has 15 MA's), (Start: 23 @60582 has 275 MA's),

Gene: UncleHowie_73 Start: 59919, Stop: 60155, Start Num: 23

Candidate Starts for UncleHowie_73:

(Start: 14 @59823 has 15 MA's), (Start: 23 @59919 has 275 MA's), (24, 60078), (25, 60081),

Gene: Usavi_77 Start: 60908, Stop: 61144, Start Num: 23

Candidate Starts for Usavi_77:

(Start: 14 @60815 has 15 MA's), (Start: 23 @60908 has 275 MA's),

Gene: Vaishali24_77 Start: 60528, Stop: 60764, Start Num: 23

Candidate Starts for Vaishali24_77:

(Start: 14 @60435 has 15 MA's), (Start: 23 @60528 has 275 MA's), (24, 60687), (25, 60690),

Gene: Valjean_75 Start: 60470, Stop: 60706, Start Num: 23

Candidate Starts for Valjean_75:

(Start: 14 @60377 has 15 MA's), (Start: 23 @60470 has 275 MA's), (24, 60629), (25, 60632),

Gene: Vaticameos_73 Start: 58786, Stop: 59022, Start Num: 23

Candidate Starts for Vaticameos_73:

(Start: 14 @58693 has 15 MA's), (Start: 23 @58786 has 275 MA's),

Gene: Veritas_75 Start: 60396, Stop: 60632, Start Num: 23

Candidate Starts for Veritas_75:

(Start: 14 @60300 has 15 MA's), (Start: 23 @60396 has 275 MA's), (24, 60555), (25, 60558),

Gene: Vincenzo_76 Start: 63366, Stop: 63686, Start Num: 15

Candidate Starts for Vincenzo_76:

(Start: 15 @63366 has 2 MA's), (25, 63618),

Gene: VioletZ_75 Start: 61985, Stop: 62299, Start Num: 17

Candidate Starts for VioletZ_75:

(Start: 17 @61985 has 22 MA's), (25, 62234),

Gene: Virapocalypse_77 Start: 60581, Stop: 60817, Start Num: 23

Candidate Starts for Virapocalypse_77:

(Start: 14 @60488 has 15 MA's), (Start: 23 @60581 has 275 MA's),

Gene: Virgeve_74 Start: 60198, Stop: 60434, Start Num: 23

Candidate Starts for Virgeve_74:

(Start: 14 @60102 has 15 MA's), (Start: 23 @60198 has 275 MA's), (24, 60357), (25, 60360),

Gene: Vista_75 Start: 60394, Stop: 60630, Start Num: 23

Candidate Starts for Vista_75:

(Start: 14 @60301 has 15 MA's), (Start: 23 @60394 has 275 MA's), (24, 60553), (25, 60556),

Gene: Vivaldi_76 Start: 60678, Stop: 60914, Start Num: 23

Candidate Starts for Vivaldi_76:

(Start: 14 @60585 has 15 MA's), (Start: 23 @60678 has 275 MA's), (24, 60837), (25, 60840),

Gene: Vortex_75 Start: 60408, Stop: 60737, Start Num: 14

Candidate Starts for Vortex_75:

(Start: 14 @60408 has 15 MA's), (Start: 23 @60501 has 275 MA's), (24, 60660), (25, 60663),

Gene: Waleliano_72 Start: 61683, Stop: 61997, Start Num: 17

Candidate Starts for Waleliano_72:

(4, 61512), (7, 61614), (Start: 17 @61683 has 22 MA's), (Start: 20 @61722 has 1 MA's), (25, 61929),

Gene: Wallhey_77 Start: 60501, Stop: 60737, Start Num: 23

Candidate Starts for Wallhey_77:

(Start: 14 @60408 has 15 MA's), (Start: 23 @60501 has 275 MA's), (24, 60660), (25, 60663),

Gene: Waterdiva_77 Start: 60768, Stop: 61004, Start Num: 23

Candidate Starts for Waterdiva_77:

(Start: 14 @60675 has 15 MA's), (Start: 23 @60768 has 275 MA's), (24, 60927), (25, 60930),

Gene: Weher20_73 Start: 60839, Stop: 61075, Start Num: 23

Candidate Starts for Weher20_73:

(Start: 14 @60746 has 15 MA's), (Start: 23 @60839 has 275 MA's), (24, 60998), (25, 61001),

Gene: Windsor_76 Start: 60784, Stop: 61020, Start Num: 23

Candidate Starts for Windsor_76:

(Start: 14 @60691 has 15 MA's), (Start: 23 @60784 has 275 MA's), (24, 60943), (25, 60946),

Gene: Xavier_76 Start: 60390, Stop: 60626, Start Num: 23

Candidate Starts for Xavier_76:

(Start: 14 @60294 has 15 MA's), (Start: 23 @60390 has 275 MA's), (24, 60549), (25, 60552),

Gene: Xincheng_72 Start: 62911, Stop: 63222, Start Num: 17

Candidate Starts for Xincheng_72:

(3, 62662), (4, 62740), (7, 62842), (Start: 17 @62911 has 22 MA's), (Start: 20 @62950 has 1 MA's), (25, 63157),

Gene: Yoshand_77 Start: 60635, Stop: 60871, Start Num: 23

Candidate Starts for Yoshand_77:

(Start: 14 @60542 has 15 MA's), (Start: 23 @60635 has 275 MA's), (24, 60794), (25, 60797),

Gene: YouGoGlencoco_76 Start: 60509, Stop: 60745, Start Num: 23

Candidate Starts for YouGoGlencoco_76:

(Start: 14 @60416 has 15 MA's), (Start: 23 @60509 has 275 MA's), (24, 60668), (25, 60671),

Gene: Zaider_77 Start: 60710, Stop: 60946, Start Num: 23

Candidate Starts for Zaider_77:

(Start: 14 @60617 has 15 MA's), (Start: 23 @60710 has 275 MA's), (24, 60869), (25, 60872),

Gene: Zelda_76 Start: 60840, Stop: 61076, Start Num: 23

Candidate Starts for Zelda_76:

(Start: 14 @60747 has 15 MA's), (Start: 23 @60840 has 275 MA's), (24, 60999), (25, 61002),

Gene: Zemanar_73 Start: 61935, Stop: 62246, Start Num: 17

Candidate Starts for Zemanar_73:

(Start: 17 @61935 has 22 MA's), (Start: 20 @61974 has 1 MA's), (25, 62181),

Gene: Zonia_77 Start: 60952, Stop: 61188, Start Num: 23

Candidate Starts for Zonia_77:

(Start: 14 @60859 has 15 MA's), (Start: 23 @60952 has 275 MA's),