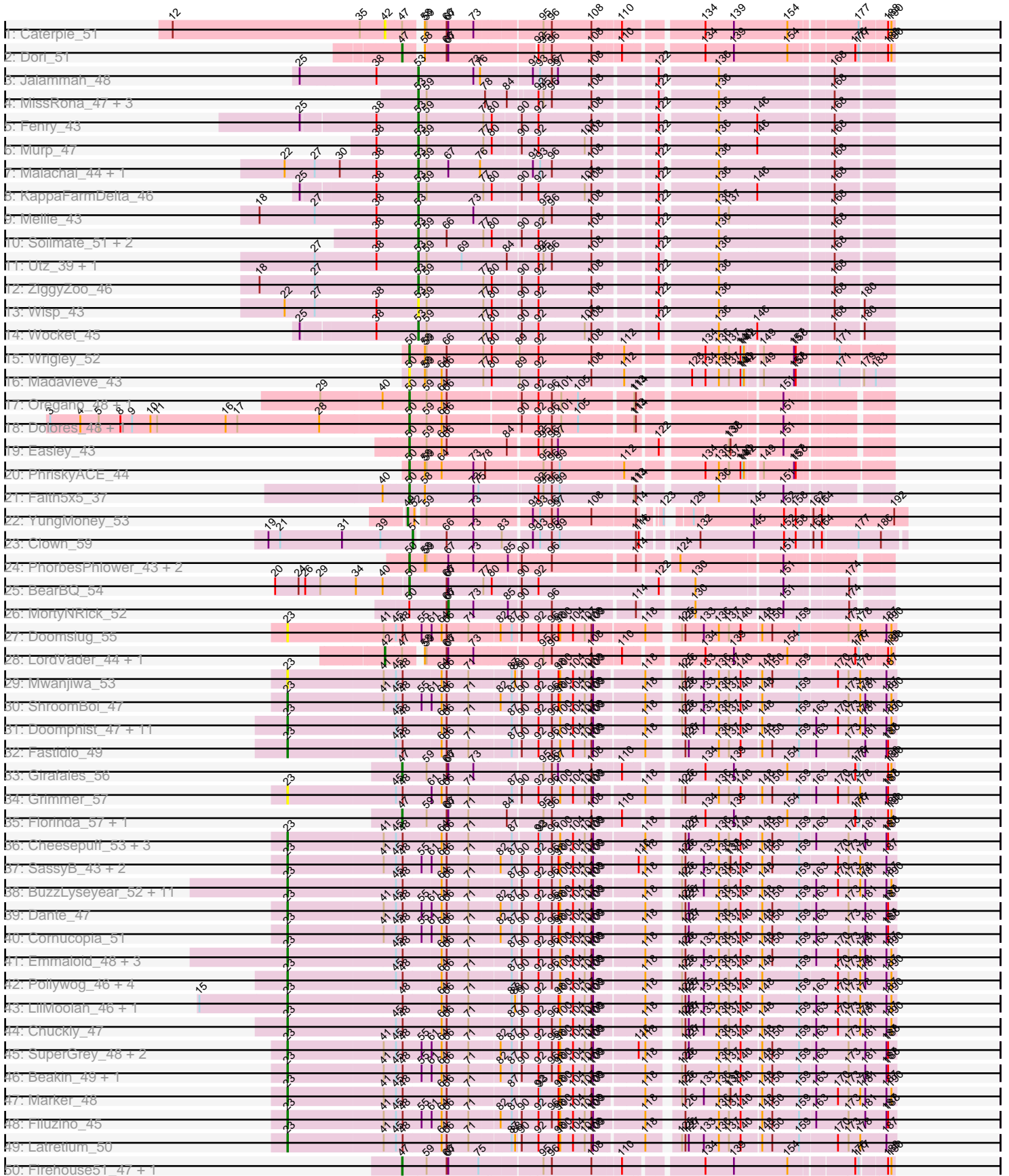
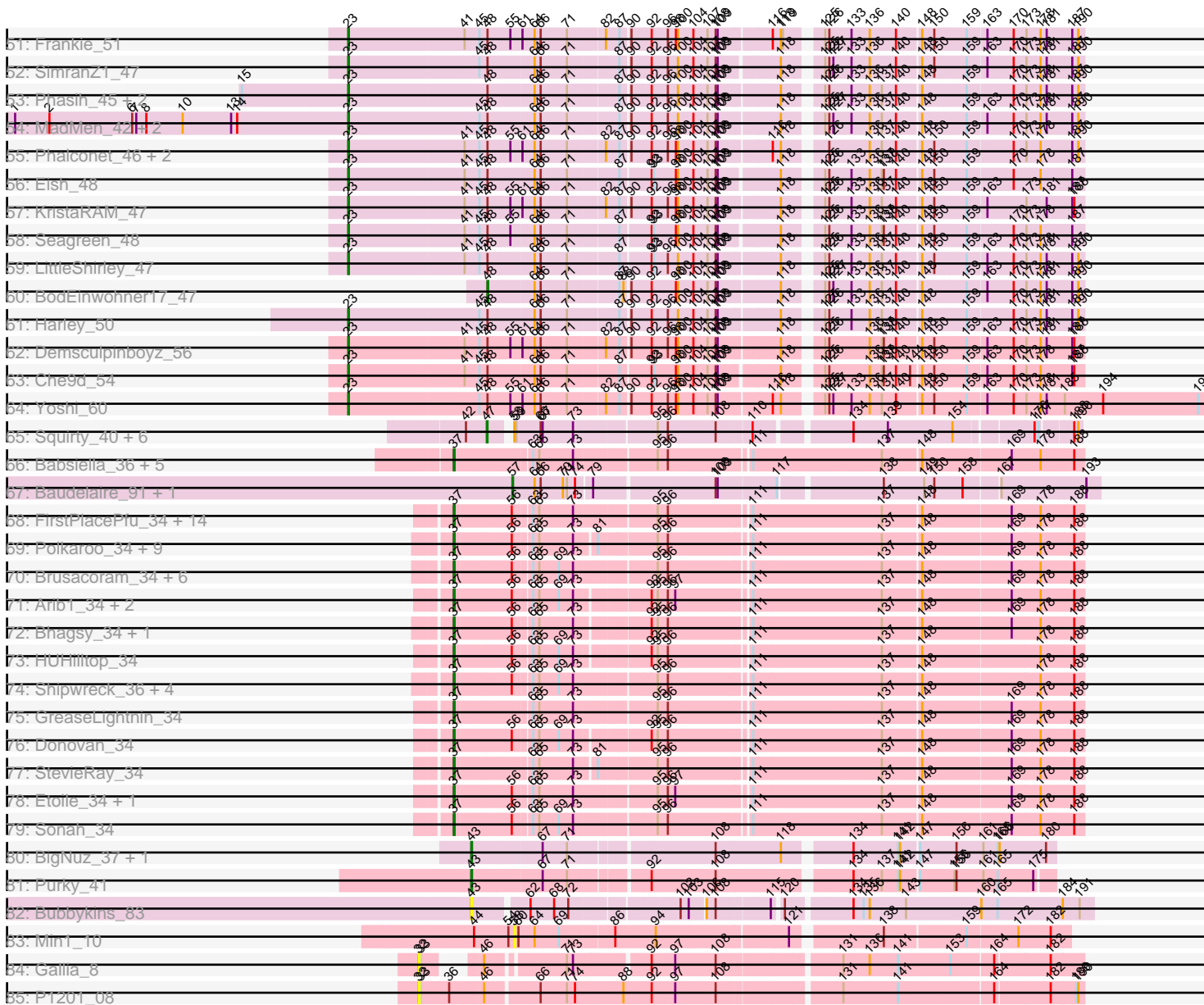


Pham 306166



Pham 306166



Note: Tracks are now grouped by subcluster and scaled. Switching in subcluster is indicated by changes in track color. Track scale is now set by default to display the region 30 bp upstream of start 1 to 30 bp downstream of the last possible start. If this default region is judged to be packed too tightly with annotated starts, the track will be further scaled to only show that region of the ORF with annotated starts. This action will be indicated by adding "Zoomed" to the title. For starts, yellow indicates the location of called starts comprised solely of Glimmer/GeneMark auto-annotations, green indicates the location of called starts with at least 1 manual gene annotation.

Pham 306166 Report

This analysis was run 06/12/26 on database version 650.

Pham number 306166 has 193 members, 24 are drafts.

Phages represented in each track:

- Track 1 : Caterpie_51
- Track 2 : Dori_51
- Track 3 : Jalammah_48
- Track 4 : MissRona_47, Blueberry_46, Gambino_49, Azula_47
- Track 5 : Fenry_43
- Track 6 : Murp_47
- Track 7 : Malachai_44, Begonia_44
- Track 8 : KappaFarmDelta_46
- Track 9 : Mellie_43
- Track 10 : Soilmate_51, CarolAnn_48, Blino_49
- Track 11 : Utz_39, Samba_44
- Track 12 : ZiggyZoo_46
- Track 13 : Wisp_43
- Track 14 : Wocket_45
- Track 15 : Wrigley_52
- Track 16 : Madavieve_43
- Track 17 : Oregano_48, Annalisa_45
- Track 18 : Dolores_48, WinkNick_49
- Track 19 : Easley_43
- Track 20 : PhriskyACE_44
- Track 21 : Faith5x5_37
- Track 22 : YungMoney_53
- Track 23 : Clown_59
- Track 24 : PhorbesPhlower_43, Pepperoni_38, InLimbo_43
- Track 25 : BearBQ_54
- Track 26 : MortyNRick_52
- Track 27 : Doomslug_55
- Track 28 : LordVader_44, LastJedi_41
- Track 29 : Mwanjiwa_53
- Track 30 : ShroomBoi_47
- Track 31 : Doomphist_47, Girr_48, Poenanya_47, Job42_48, Blexus_45, Ruby_46, Dorothy_44, Stap_46, RedBird_44, BlueCrab_45, MisterCuddles_47, Madiba_43
- Track 32 : Fastidio_49
- Track 33 : Girafales_56
- Track 34 : Grimmer_57
- Track 35 : Florinda_57, Quico_55
- Track 36 : Cheesepuff_53, DaWorst_49, OgoPogo_48, DillTech15_46

- Track 37 : SassyB_43, Estave1_48, PopTart_43
- Track 38 : BuzzLyseyear_52, Starcevich_47, Karhdo_46, Veteran_45, GUmbie_45, Tweety_47, Mantra_44, GigiOuiOui_44, Vivum_50, Wee_50, SiSi_47, Hamulus_48
- Track 39 : Dante_47
- Track 40 : Cornucopia_51
- Track 41 : Emmaloid_48, DotProduct_44, Totinger_47, Slim_48
- Track 42 : Pollywog_46, Topiatin_52, PMC_42, Boomer_50, Rockne_45
- Track 43 : LilMoolah_46, Nivrat_45
- Track 44 : Chuckly_47
- Track 45 : SuperGrey_48, Fruitloop_46, Brushbloom_50
- Track 46 : Beakin_49, Jant_52
- Track 47 : Marker_48
- Track 48 : Filuzino_45
- Track 49 : Latretium_50
- Track 50 : Firehouse51_47, DosHalletts_47
- Track 51 : Frankie_51
- Track 52 : SimranZ1_47
- Track 53 : Phasih_45, Zerg_46, RockyHorror_48
- Track 54 : MadMen_42, Beanstalk_50, Krakatau_45
- Track 55 : Phalconet_46, PhesterPhotato_49, Okabe_43
- Track 56 : Eish_48
- Track 57 : KristaRAM_47
- Track 58 : Seagreen_48
- Track 59 : LittleShirley_47
- Track 60 : BodEinwohner17_47
- Track 61 : Harley_50
- Track 62 : Demsculpinboyz_56
- Track 63 : Che9d_54
- Track 64 : Yoshi_60
- Track 65 : Squirty_40, Jennelsea_44, Donkeykong_46, Zizzle_51, Brocalys_43, Clifton_42, Pippy_45
- Track 66 : Babsiella_36, Brujita_36, HC_34, Island3_36, QueenHazel_32, Xula_31
- Track 67 : Baudelaire_91, Aegeus_91
- Track 68 : FirstPlacePfu_34, Fishburne_34, Bartholomew_33, Venti_34, Dynamo_34, BronnyJr_34, Mangethe_34, Phineas_34, Majeke_34, Vidya_34, Necropolis_34, Chubbello_34, Kari_34, Zilizebeth_34, Phegasus_34
- Track 69 : Polkaroo_34, KilKor_34, Gavriela_34, Willsammy_33, Phalm_34, Jung_33, Megiddo_34, CactusJack_34, StressBall_34, Glaske_34
- Track 70 : Brusacoram_34, Atcoo_34, Bunnies_34, Juniormint_34, Jebeks_35, Ksquared_34, Thespis_34
- Track 71 : Arib1_34, Langerak_34, GaloreK_34
- Track 72 : Bhagsy_34, PeanutPie_34
- Track 73 : HUHilltop_34
- Track 74 : Shipwreck_36, Pygmy_36, Camster_34, Bogie_36, Malithi_34
- Track 75 : GreaseLightnin_34
- Track 76 : Donovan_34
- Track 77 : StevieRay_34
- Track 78 : Etoile_34, Techage_34
- Track 79 : Sonah_34
- Track 80 : BigNuz_37, Nazo_38
- Track 81 : Purky_41
- Track 82 : Bubbykins_83
- Track 83 : Min1_10

- Track 84 : Gallia_8
- Track 85 : P1201_08

Summary of Final Annotations (See graph section above for start numbers):

The start number called the most often in the published annotations is 23, it was called in 70 of the 169 non-draft genes in the pham.

Genes that call this "Most Annotated" start:

- Beakin_49, Beanstalk_50, Blexus_45, BlueCrab_45, Boomer_50, Brushbloom_50, BuzzLyseyear_52, Che9d_54, CheesePuff_53, Chuckly_47, Cornucopia_51, DaWorst_49, Dante_47, Demsculpinboyz_56, DillTech15_46, Doomphist_47, Doomslug_55, Dorothy_44, DotProduct_44, Eish_48, Emmaloid_48, Estave1_48, Fastidio_49, Filuzino_45, Frankie_51, Fruitloop_46, GUmBie_45, GigiOuiOui_44, Girr_48, Grimmer_57, Hamulus_48, Harley_50, Jant_52, Job42_48, Karhdo_46, Krakatau_45, KristaRAM_47, Latretium_50, LilMoolah_46, LittleShirley_47, MadMen_42, Madiba_43, Mantra_44, Marker_48, MisterCuddles_47, Mwanjiwa_53, Nivrat_45, OgoPogo_48, Okabe_43, PMC_42, Phalconet_46, Phasih_45, PhesterPotato_49, Poenanya_47, Pollywog_46, PopTart_43, RedBird_44, Rockne_45, RockyHorror_48, Ruby_46, SassyB_43, Seagreen_48, ShroomBoi_47, SiSi_47, SimranZ1_47, Slim_48, Stap_46, StarceVich_47, SuperGrey_48, Topiatin_52, Totinger_47, Tweety_47, Veteran_45, Vivum_50, Wee_50, Yoshi_60, Zerg_46,

Genes that have the "Most Annotated" start but do not call it:

-

Genes that do not have the "Most Annotated" start:

- Aegeus_91, Annalisa_45, Arib1_34, Atcoo_34, Azula_47, Babsiella_36, Bartholomew_33, Baudelaire_91, BearBQ_54, Begonia_44, Bhagsy_34, BigNuz_37, Blino_49, Blueberry_46, BodEinwohner17_47, Bogie_36, Brocalys_43, BronnyJr_34, Brujita_36, Brusacoram_34, Bubbykins_83, Bunnies_34, CactusJack_34, Camster_34, CarolAnn_48, Caterpie_51, Chubbello_34, Clifton_42, Clown_59, Dolores_48, Donkeykong_46, Donovan_34, Dori_51, DosHalletts_47, Dynamo_34, Easley_43, Etoile_34, Faith5x5_37, Fenry_43, Firehouse51_47, FirstPlacePfu_34, Fishburne_34, Florinda_57, Gallia_8, GaloreK_34, Gambino_49, Gavriela_34, Girafales_56, Glaske_34, GreaseLightnin_34, HC_34, HUHilltop_34, InLimbo_43, Island3_36, Jalamah_48, Jebeks_35, Jennelsea_44, Jung_33, Juniormint_34, KappaFarmDelta_46, Kari_34, KilKor_34, Ksquared_34, Langerak_34, LastJedi_41, LordVader_44, Madavieve_43, Majeke_34, Malachai_44, Malithi_34, Mangethe_34, Megidido_34, Mellie_43, Min1_10, MissRona_47, MortyNRick_52, Murp_47, Nazo_38, Necropolis_34, Oregano_48, P1201_08, PeanutPie_34, Pepperoni_38, Phalm_34, Phegasus_34, Phineas_34, PhorbesPhlower_43, PhriskyACE_44, Pippy_45, Polkaroo_34, Purky_41, Pygmy_36, QueenHazel_32, Quico_55, Samba_44, Shipwreck_36, Soilmate_51, Sonah_34, Squirty_40, StevieRay_34, StressBall_34, Techage_34, Thespis_34, Utz_39, Venti_34, Vidya_34, Willsammy_33, WinkNick_49, Wisp_43, Wocket_45, Wrigley_52, Xula_31, YungMoney_53, ZiggyZoo_46, Zilizabeth_34, Zizzle_51,

Summary by start number:

Start 23:

- Found in 77 of 193 (39.9%) of genes in pham
- Manual Annotations of this start: 70 of 169
- Called 100.0% of time when present
- Phage (with cluster) where this start called: Beakin_49 (F1), Beanstalk_50 (F1), Blexus_45 (F1), BlueCrab_45 (F1), Boomer_50 (F1), Brushbloom_50 (F1), BuzzLyseyear_52 (F1), Che9d_54 (F2), Cheesepuff_53 (F1), Chuckly_47 (F1), Cornucopia_51 (F1), DaWorst_49 (F1), Dante_47 (F1), Demsculpinboyz_56 (F2), DillTech15_46 (F1), Doomphist_47 (F1), Doomslug_55 (F), Dorothy_44 (F1), DotProduct_44 (F1), Eish_48 (F1), Emmaloid_48 (F1), Estave1_48 (F1), Fastidio_49 (F1), Filuzino_45 (F1), Frankie_51 (F1), Fruitloop_46 (F1), GUmbie_45 (F1), GigiOuiOui_44 (F1), Girr_48 (F1), Grimmer_57 (F1), Hamulus_48 (F1), Harley_50 (F1), Jant_52 (F1), Job42_48 (F1), Karhdo_46 (F1), Krakatau_45 (F1), KristaRAM_47 (F1), Latretium_50 (F1), LilMoolah_46 (F1), LittleShirley_47 (F1), MadMen_42 (F1), Madiba_43 (F1), Mantra_44 (F1), Marker_48 (F1), MisterCuddles_47 (F1), Mwanjiwa_53 (F1), Nivrat_45 (F1), Ogoopogo_48 (F1), Okabe_43 (F8), PMC_42 (F1), Phalconet_46 (F1), Phasih_45 (F1), PhesterPotato_49 (F1), Poenanya_47 (F1), Pollywog_46 (F1), PopTart_43 (F1), RedBird_44 (F1), Rockne_45 (F1), RockyHorror_48 (F1), Ruby_46 (F1), SassyB_43 (F1), Seagreen_48 (F1), ShroomBoi_47 (F1), SiSi_47 (F1), SimranZ1_47 (F1), Slim_48 (F1), Stap_46 (F1), Starcevic_47 (F1), SuperGrey_48 (F1), Topiatin_52 (F1), Totinger_47 (F1), Tweety_47 (F1), Veteran_45 (F1), Vivum_50 (F1), Wee_50 (F1), Yoshi_60 (F2), Zerg_46 (F1),

Start 32:

- Found in 2 of 193 (1.0%) of genes in pham
- No Manual Annotations of this start.
- Called 100.0% of time when present
- Phage (with cluster) where this start called: Gallia_8 (singleton), P1201_08 (singleton),

Start 37:

- Found in 55 of 193 (28.5%) of genes in pham
- Manual Annotations of this start: 49 of 169
- Called 100.0% of time when present
- Phage (with cluster) where this start called: Arib1_34 (P1), Atcoo_34 (P1), Babsiella_36 (I1), Bartholomew_33 (P1), Bhagsy_34 (P1), Bogie_36 (P1), BronnyJr_34 (P1), Brujita_36 (I1), Brusacoram_34 (P1), Bunnies_34 (P1), CactusJack_34 (P1), Camster_34 (P1), Chubbello_34 (P1), Donovan_34 (P1), Dynamo_34 (P1), Etoile_34 (P1), FirstPlacePfu_34 (P1), Fishburne_34 (P1), GaloreK_34 (P1), Gavriela_34 (P1), Glaske_34 (P1), GreaseLightnin_34 (P1), HC_34 (I1), HUHilltop_34 (P1), Island3_36 (I1), Jebeks_35 (P1), Jung_33 (P1), Juniormint_34 (P1), Kari_34 (P1), KilKor_34 (P1), Ksquared_34 (P1), Langerak_34 (P1), Majeke_34 (P1), Malithi_34 (P1), Mangethe_34 (P1), Megiddo_34 (P1), Necropolis_34 (P1), PeanutPie_34 (P1), Phalm_34 (P1), Phegasus_34 (P1), Phineas_34 (P1), Polkaroo_34 (P1), Pygmy_36 (P1), QueenHazel_32 (I1), Shipwreck_36 (P1), Sonah_34 (P1), StevieRay_34 (P1), StressBall_34 (P1), Techage_34 (P1), Thespis_34 (P1), Venti_34 (P1), Vidya_34 (P1), Willsammy_33 (P1), Xula_31 (I1), Zilizebeth_34 (P1),

Start 42:

- Found in 10 of 193 (5.2%) of genes in pham

- Manual Annotations of this start: 1 of 169
- Called 30.0% of time when present
- Phage (with cluster) where this start called: Caterpie_51 (AD), LastJedi_41 (F1), LordVader_44 (F),

Start 43:

- Found in 4 of 193 (2.1%) of genes in pham
- Manual Annotations of this start: 3 of 169
- Called 100.0% of time when present
- Phage (with cluster) where this start called: BigNuz_37 (P4), Bubbykins_83 (UNK), Nazo_38 (P4), Purky_41 (P6),

Start 47:

- Found in 16 of 193 (8.3%) of genes in pham
- Manual Annotations of this start: 12 of 169
- Called 81.2% of time when present
- Phage (with cluster) where this start called: Brocalys_43 (F1), Clifton_42 (F1), Donkeykong_46 (F1), Dori_51 (AD), DosHalletts_47 (F1), Firehouse51_47 (F1), Florinda_57 (F1), Girafales_56 (F1), Jennelsea_44 (F1), Pippy_45 (F1), Quico_55 (F1), Squirty_40 (F3), Zizzle_51 (F1),

Start 48:

- Found in 78 of 193 (40.4%) of genes in pham
- Manual Annotations of this start: 1 of 169
- Called 1.3% of time when present
- Phage (with cluster) where this start called: BodEinwohner17_47 (F1),

Start 49:

- Found in 1 of 193 (0.5%) of genes in pham
- Manual Annotations of this start: 1 of 169
- Called 100.0% of time when present
- Phage (with cluster) where this start called: YungMoney_53 (DC1),

Start 50:

- Found in 14 of 193 (7.3%) of genes in pham
- Manual Annotations of this start: 11 of 169
- Called 92.9% of time when present
- Phage (with cluster) where this start called: Annalisa_45 (CZ4), BearBQ_54 (DN), Dolores_48 (CZ4), Easley_43 (CZ4), Faith5x5_37 (CZ6), InLimbo_43 (DH), Madavieve_43 (CZ1), Oregano_48 (CZ4), Pepperoni_38 (CZ), PhorbesPhlower_43 (DH), PhriskyACE_44 (CZ4), WinkNick_49 (CZ4), Wrigley_52 (CY4),

Start 51:

- Found in 1 of 193 (0.5%) of genes in pham
- Manual Annotations of this start: 1 of 169
- Called 100.0% of time when present
- Phage (with cluster) where this start called: Clown_59 (DC2),

Start 53:

- Found in 19 of 193 (9.8%) of genes in pham
- Manual Annotations of this start: 17 of 169
- Called 100.0% of time when present

- Phage (with cluster) where this start called: Azula_47 (CV), Begonia_44 (CV), Blino_49 (CV), Blueberry_46 (CV), CarolAnn_48 (CV), Fenry_43 (CV), Gambino_49 (CV), Jalammah_48 (CV), KappaFarmDelta_46 (CV), Malachai_44 (CV), Mellie_43 (CV), MissRona_47 (CV), Murp_47 (CV), Samba_44 (CV), Soilmate_51 (CV), Utz_39 (CV), Wisp_43 (CV), Wocket_45 (CV), ZiggyZoo_46 (CV),

Start 57:

- Found in 2 of 193 (1.0%) of genes in pham
- Manual Annotations of this start: 2 of 169
- Called 100.0% of time when present
- Phage (with cluster) where this start called: Aegeus_91 (L5), Baudelaire_91 (L5),

Start 58:

- Found in 19 of 193 (9.8%) of genes in pham
- No Manual Annotations of this start.
- Called 5.3% of time when present
- Phage (with cluster) where this start called: Min1_10 (singleton),

Start 67:

- Found in 26 of 193 (13.5%) of genes in pham
- Manual Annotations of this start: 1 of 169
- Called 3.8% of time when present
- Phage (with cluster) where this start called: MortyNRick_52 (DN),

Summary by clusters:

There are 23 clusters represented in this pham: DN, singleton, DH, CZ1, CZ6, CZ4, I1, CY4, P1, P6, AD, P4, F, CZ, L5, UNK, DC2, CV, DC1, F1, F2, F3, F8,

Info for manual annotations of cluster AD:

- Start number 47 was manually annotated 1 time for cluster AD.

Info for manual annotations of cluster CV:

- Start number 53 was manually annotated 17 times for cluster CV.

Info for manual annotations of cluster CY4:

- Start number 50 was manually annotated 1 time for cluster CY4.

Info for manual annotations of cluster CZ:

- Start number 50 was manually annotated 1 time for cluster CZ.

Info for manual annotations of cluster CZ4:

- Start number 50 was manually annotated 6 times for cluster CZ4.

Info for manual annotations of cluster CZ6:

- Start number 50 was manually annotated 1 time for cluster CZ6.

Info for manual annotations of cluster DC1:

- Start number 49 was manually annotated 1 time for cluster DC1.

Info for manual annotations of cluster DC2:

- Start number 51 was manually annotated 1 time for cluster DC2.

Info for manual annotations of cluster DH:

- Start number 50 was manually annotated 1 time for cluster DH.

Info for manual annotations of cluster DN:

- Start number 50 was manually annotated 1 time for cluster DN.
- Start number 67 was manually annotated 1 time for cluster DN.

Info for manual annotations of cluster F1:

- Start number 23 was manually annotated 67 times for cluster F1.
- Start number 42 was manually annotated 1 time for cluster F1.
- Start number 47 was manually annotated 10 times for cluster F1.
- Start number 48 was manually annotated 1 time for cluster F1.

Info for manual annotations of cluster F2:

- Start number 23 was manually annotated 3 times for cluster F2.

Info for manual annotations of cluster F3:

- Start number 47 was manually annotated 1 time for cluster F3.

Info for manual annotations of cluster I1:

- Start number 37 was manually annotated 6 times for cluster I1.

Info for manual annotations of cluster L5:

- Start number 57 was manually annotated 2 times for cluster L5.

Info for manual annotations of cluster P1:

- Start number 37 was manually annotated 43 times for cluster P1.

Info for manual annotations of cluster P4:

- Start number 43 was manually annotated 2 times for cluster P4.

Info for manual annotations of cluster P6:

- Start number 43 was manually annotated 1 time for cluster P6.

Gene Information:

Gene: Aegeus_91 Start: 56094, Stop: 56897, Start Num: 57

Candidate Starts for Aegeus_91:

(Start: 57 @56094 has 2 MA's), (64, 56127), (66, 56136), (70, 56169), (71, 56175), (74, 56187), (79, 56208), (108, 56373), (109, 56376), (117, 56457), (138, 56595), (149, 56655), (150, 56670), (158, 56709), (167, 56757), (193, 56877),

Gene: Annalisa_45 Start: 33306, Stop: 34055, Start Num: 50

Candidate Starts for Annalisa_45:

(29, 33153), (40, 33261), (Start: 50 @33306 has 11 MA's), (59, 33336), (64, 33363), (66, 33372), (90, 33489), (92, 33516), (96, 33540), (101, 33555), (105, 33585), (113, 33675), (114, 33678), (151, 33900),

Gene: Arib1_34 Start: 27945, Stop: 28808, Start Num: 37

Candidate Starts for Arib1_34:

(Start: 37 @27945 has 49 MA's), (56, 28026), (63, 28050), (65, 28059), (69, 28086), (73, 28107), (92, 28203), (95, 28212), (96, 28227), (97, 28236), (111, 28338), (137, 28521), (148, 28575), (169, 28704), (178, 28746), (188, 28794),

Gene: Atcoo_34 Start: 28426, Stop: 29292, Start Num: 37

Candidate Starts for Atcoo_34:

(Start: 37 @28426 has 49 MA's), (56, 28507), (63, 28531), (65, 28540), (69, 28567), (73, 28588), (95, 28696), (96, 28711), (111, 28822), (137, 29005), (148, 29059), (169, 29188), (178, 29230), (188, 29278),

Gene: Azula_47 Start: 35195, Stop: 35956, Start Num: 53

Candidate Starts for Azula_47:

(Start: 53 @35195 has 17 MA's), (59, 35210), (78, 35312), (84, 35345), (92, 35390), (95, 35399), (96, 35414), (108, 35483), (122, 35579), (136, 35669), (168, 35861),

Gene: Babsiella_36 Start: 28877, Stop: 29746, Start Num: 37

Candidate Starts for Babsiella_36:

(Start: 37 @28877 has 49 MA's), (63, 28985), (65, 28994), (73, 29042), (95, 29150), (96, 29165), (111, 29276), (137, 29459), (148, 29513), (169, 29642), (178, 29684), (188, 29732),

Gene: Bartholomew_33 Start: 27939, Stop: 28805, Start Num: 37

Candidate Starts for Bartholomew_33:

(Start: 37 @27939 has 49 MA's), (56, 28020), (63, 28044), (65, 28053), (73, 28101), (95, 28209), (96, 28224), (111, 28335), (137, 28518), (148, 28572), (169, 28701), (178, 28743), (188, 28791),

Gene: Baudelaire_91 Start: 56094, Stop: 56897, Start Num: 57

Candidate Starts for Baudelaire_91:

(Start: 57 @56094 has 2 MA's), (64, 56127), (66, 56136), (70, 56169), (71, 56175), (74, 56187), (79, 56208), (108, 56373), (109, 56376), (117, 56457), (138, 56595), (149, 56655), (150, 56670), (158, 56709), (167, 56757), (193, 56877),

Gene: Beakin_49 Start: 35134, Stop: 36138, Start Num: 23

Candidate Starts for Beakin_49:

(Start: 23 @35134 has 70 MA's), (41, 35302), (45, 35323), (Start: 48 @35335 has 1 MA's), (55, 35368), (61, 35383), (64, 35401), (66, 35410), (71, 35446), (82, 35494), (87, 35512), (90, 35524), (92, 35551), (96, 35575), (98, 35587), (100, 35590), (104, 35611), (107, 35632), (108, 35644), (109, 35647), (118, 35731), (125, 35776), (126, 35782), (136, 35839), (137, 35857), (140, 35878), (148, 35911), (150, 35929), (159, 35971), (163, 35998), (173, 36055), (181, 36085), (187, 36121), (188, 36124),

Gene: Beanstalk_50 Start: 34763, Stop: 35770, Start Num: 23

Candidate Starts for Beanstalk_50:

(1, 34268), (2, 34319), (6, 34442), (7, 34448), (8, 34463), (10, 34517), (13, 34589), (14, 34598), (Start: 23 @34763 has 70 MA's), (45, 34955), (Start: 48 @34967 has 1 MA's), (64, 35033), (66, 35042), (71, 35078), (87, 35144), (90, 35156), (92, 35183), (96, 35207), (100, 35222), (104, 35243), (107, 35264), (108, 35276), (109, 35279), (118, 35363), (125, 35408), (126, 35414), (127, 35420), (133, 35444), (136, 35471), (137, 35489), (140, 35510), (148, 35543), (159, 35603), (163, 35630), (170, 35669), (173, 35687), (178, 35708), (181, 35717), (187, 35753), (190, 35762),

Gene: BearBQ_54 Start: 38297, Stop: 39052, Start Num: 50

Candidate Starts for BearBQ_54:

(20, 38063), (24, 38105), (26, 38117), (29, 38144), (34, 38207), (40, 38255), (Start: 50 @38297 has 11 MA's), (66, 38363), (Start: 67 @38366 has 1 MA's), (77, 38426), (80, 38438), (90, 38480), (92, 38507), (122, 38702), (130, 38753), (151, 38897), (174, 38990),

Gene: Begonia_44 Start: 35305, Stop: 36069, Start Num: 53

Candidate Starts for Begonia_44:

(22, 35065), (27, 35119), (30, 35164), (38, 35230), (Start: 53 @35305 has 17 MA's), (59, 35320), (Start: 67 @35359 has 1 MA's), (76, 35416), (91, 35494), (93, 35506), (96, 35527), (108, 35596), (122, 35692), (136, 35782), (168, 35974),

Gene: Bhagsy_34 Start: 27935, Stop: 28798, Start Num: 37

Candidate Starts for Bhagsy_34:

(Start: 37 @27935 has 49 MA's), (56, 28016), (63, 28040), (65, 28049), (73, 28097), (92, 28193), (95, 28202), (96, 28217), (111, 28328), (137, 28511), (148, 28565), (169, 28694), (178, 28736), (188, 28784),

Gene: BigNuz_37 Start: 30064, Stop: 30867, Start Num: 43

Candidate Starts for BigNuz_37:

(Start: 43 @30064 has 3 MA's), (Start: 67 @30166 has 1 MA's), (71, 30202), (108, 30394), (118, 30490), (134, 30574), (141, 30640), (142, 30643), (147, 30667), (156, 30721), (161, 30760), (165, 30781), (166, 30784), (180, 30853),

Gene: Blexus_45 Start: 35131, Stop: 36135, Start Num: 23

Candidate Starts for Blexus_45:

(Start: 23 @35131 has 70 MA's), (45, 35320), (Start: 48 @35332 has 1 MA's), (64, 35398), (66, 35407), (71, 35443), (87, 35509), (90, 35521), (92, 35548), (96, 35572), (100, 35587), (104, 35608), (107, 35629), (108, 35641), (109, 35644), (118, 35728), (125, 35773), (126, 35779), (133, 35809), (136, 35836), (137, 35854), (140, 35875), (148, 35908), (159, 35968), (163, 35995), (170, 36034), (173, 36052), (178, 36073), (181, 36082), (187, 36118), (190, 36127),

Gene: Blino_49 Start: 38491, Stop: 39252, Start Num: 53

Candidate Starts for Blino_49:

(38, 38416), (Start: 53 @38491 has 17 MA's), (59, 38506), (66, 38542), (77, 38605), (80, 38617), (90, 38659), (92, 38686), (108, 38779), (122, 38875), (136, 38965), (168, 39157),

Gene: BlueCrab_45 Start: 34857, Stop: 35861, Start Num: 23

Candidate Starts for BlueCrab_45:

(Start: 23 @34857 has 70 MA's), (45, 35046), (Start: 48 @35058 has 1 MA's), (64, 35124), (66, 35133), (71, 35169), (87, 35235), (90, 35247), (92, 35274), (96, 35298), (100, 35313), (104, 35334), (107, 35355), (108, 35367), (109, 35370), (118, 35454), (125, 35499), (126, 35505), (133, 35535), (136, 35562), (137, 35580), (140, 35601), (148, 35634), (159, 35694), (163, 35721), (170, 35760), (173, 35778), (178, 35799), (181, 35808), (187, 35844), (190, 35853),

Gene: Blueberry_46 Start: 35195, Stop: 35956, Start Num: 53

Candidate Starts for Blueberry_46:

(Start: 53 @35195 has 17 MA's), (59, 35210), (78, 35312), (84, 35345), (92, 35390), (95, 35399), (96, 35414), (108, 35483), (122, 35579), (136, 35669), (168, 35861),

Gene: BodEinwohner17_47 Start: 35274, Stop: 36077, Start Num: 48

Candidate Starts for BodEinwohner17_47:

(Start: 48 @35274 has 1 MA's), (64, 35340), (66, 35349), (71, 35385), (87, 35451), (88, 35457), (90, 35463), (92, 35490), (98, 35526), (100, 35529), (104, 35550), (107, 35571), (108, 35583), (109, 35586), (118, 35670), (125, 35715), (126, 35721), (127, 35727), (133, 35751), (136, 35778), (137,

35796), (140, 35817), (148, 35850), (159, 35910), (163, 35937), (170, 35976), (173, 35994), (178, 36015), (181, 36024), (187, 36060), (190, 36069),

Gene: Bogie_36 Start: 29722, Stop: 30588, Start Num: 37

Candidate Starts for Bogie_36:

(Start: 37 @29722 has 49 MA's), (56, 29803), (63, 29827), (65, 29836), (69, 29863), (73, 29884), (95, 29992), (96, 30007), (111, 30118), (137, 30301), (148, 30355), (178, 30526), (188, 30574),

Gene: Boomer_50 Start: 36306, Stop: 37310, Start Num: 23

Candidate Starts for Boomer_50:

(Start: 23 @36306 has 70 MA's), (45, 36495), (Start: 48 @36507 has 1 MA's), (64, 36573), (66, 36582), (71, 36618), (87, 36684), (90, 36696), (92, 36723), (96, 36747), (100, 36762), (104, 36783), (107, 36804), (108, 36816), (109, 36819), (118, 36903), (125, 36948), (126, 36954), (133, 36984), (136, 37011), (137, 37029), (140, 37050), (148, 37083), (159, 37143), (170, 37209), (173, 37227), (178, 37248), (181, 37257), (187, 37293), (190, 37302),

Gene: Brocalys_43 Start: 31207, Stop: 31986, Start Num: 47

Candidate Starts for Brocalys_43:

(Start: 42 @31177 has 1 MA's), (Start: 47 @31207 has 12 MA's), (58, 31231), (59, 31234), (66, 31270), (Start: 67 @31273 has 1 MA's), (73, 31318), (95, 31426), (96, 31441), (108, 31510), (110, 31558), (134, 31675), (139, 31726), (154, 31822), (176, 31927), (177, 31933), (188, 31975), (190, 31981),

Gene: BronnyJr_34 Start: 28436, Stop: 29302, Start Num: 37

Candidate Starts for BronnyJr_34:

(Start: 37 @28436 has 49 MA's), (56, 28517), (63, 28541), (65, 28550), (73, 28598), (95, 28706), (96, 28721), (111, 28832), (137, 29015), (148, 29069), (169, 29198), (178, 29240), (188, 29288),

Gene: Brujita_36 Start: 29775, Stop: 30644, Start Num: 37

Candidate Starts for Brujita_36:

(Start: 37 @29775 has 49 MA's), (63, 29883), (65, 29892), (73, 29940), (95, 30048), (96, 30063), (111, 30174), (137, 30357), (148, 30411), (169, 30540), (178, 30582), (188, 30630),

Gene: Brusacoram_34 Start: 27932, Stop: 28798, Start Num: 37

Candidate Starts for Brusacoram_34:

(Start: 37 @27932 has 49 MA's), (56, 28013), (63, 28037), (65, 28046), (69, 28073), (73, 28094), (95, 28202), (96, 28217), (111, 28328), (137, 28511), (148, 28565), (169, 28694), (178, 28736), (188, 28784),

Gene: Brushbloom_50 Start: 35774, Stop: 36778, Start Num: 23

Candidate Starts for Brushbloom_50:

(Start: 23 @35774 has 70 MA's), (41, 35942), (45, 35963), (Start: 48 @35975 has 1 MA's), (55, 36008), (61, 36023), (64, 36041), (66, 36050), (71, 36086), (82, 36134), (87, 36152), (90, 36164), (92, 36191), (96, 36215), (98, 36227), (100, 36230), (104, 36251), (107, 36272), (108, 36284), (109, 36287), (116, 36359), (118, 36371), (126, 36422), (127, 36428), (136, 36479), (137, 36497), (140, 36518), (148, 36551), (150, 36569), (159, 36611), (163, 36638), (173, 36695), (181, 36725), (187, 36761), (188, 36764),

Gene: Bubbykins_83 Start: 52362, Stop: 53198, Start Num: 43

Candidate Starts for Bubbykins_83:

(Start: 43 @52362 has 3 MA's), (62, 52437), (68, 52470), (72, 52491), (102, 52632), (103, 52644), (106, 52665), (108, 52677), (115, 52749), (120, 52758), (134, 52845), (135, 52860), (136, 52869), (143, 52923), (160, 53034), (165, 53058), (184, 53154), (191, 53178),

Gene: Bunnies_34 Start: 27953, Stop: 28819, Start Num: 37

Candidate Starts for Bunnies_34:

(Start: 37 @27953 has 49 MA's), (56, 28034), (63, 28058), (65, 28067), (69, 28094), (73, 28115), (95, 28223), (96, 28238), (111, 28349), (137, 28532), (148, 28586), (169, 28715), (178, 28757), (188, 28805),

Gene: BuzzLyseyear_52 Start: 36683, Stop: 37687, Start Num: 23

Candidate Starts for BuzzLyseyear_52:

(Start: 23 @36683 has 70 MA's), (45, 36872), (Start: 48 @36884 has 1 MA's), (64, 36950), (66, 36959), (71, 36995), (87, 37061), (90, 37073), (92, 37100), (96, 37124), (100, 37139), (104, 37160), (107, 37181), (108, 37193), (109, 37196), (118, 37280), (125, 37325), (126, 37331), (133, 37361), (136, 37388), (137, 37406), (140, 37427), (148, 37460), (159, 37520), (163, 37547), (170, 37586), (173, 37604), (178, 37625), (181, 37634), (187, 37670), (190, 37679),

Gene: CactusJack_34 Start: 28196, Stop: 29059, Start Num: 37

Candidate Starts for CactusJack_34:

(Start: 37 @28196 has 49 MA's), (56, 28277), (63, 28301), (65, 28310), (73, 28358), (81, 28382), (95, 28463), (96, 28478), (111, 28589), (137, 28772), (148, 28826), (169, 28955), (178, 28997), (188, 29045),

Gene: Camster_34 Start: 27969, Stop: 28835, Start Num: 37

Candidate Starts for Camster_34:

(Start: 37 @27969 has 49 MA's), (56, 28050), (63, 28074), (65, 28083), (69, 28110), (73, 28131), (95, 28239), (96, 28254), (111, 28365), (137, 28548), (148, 28602), (178, 28773), (188, 28821),

Gene: CarolAnn_48 Start: 38490, Stop: 39251, Start Num: 53

Candidate Starts for CarolAnn_48:

(38, 38415), (Start: 53 @38490 has 17 MA's), (59, 38505), (66, 38541), (77, 38604), (80, 38616), (90, 38658), (92, 38685), (108, 38778), (122, 38874), (136, 38964), (168, 39156),

Gene: Caterpie_51 Start: 43734, Stop: 44543, Start Num: 42

Candidate Starts for Caterpie_51:

(12, 43353), (35, 43689), (Start: 42 @43734 has 1 MA's), (Start: 47 @43764 has 12 MA's), (58, 43788), (59, 43791), (66, 43827), (Start: 67 @43830 has 1 MA's), (73, 43875), (95, 43983), (96, 43998), (108, 44067), (110, 44115), (134, 44232), (139, 44283), (154, 44379), (177, 44490), (188, 44532), (190, 44538),

Gene: Che9d_54 Start: 34668, Stop: 35669, Start Num: 23

Candidate Starts for Che9d_54:

(Start: 23 @34668 has 70 MA's), (41, 34836), (45, 34857), (Start: 48 @34869 has 1 MA's), (64, 34935), (66, 34944), (71, 34980), (87, 35046), (92, 35085), (93, 35088), (98, 35121), (100, 35124), (104, 35145), (107, 35166), (108, 35178), (109, 35181), (118, 35262), (125, 35307), (126, 35313), (136, 35370), (137, 35388), (138, 35391), (140, 35409), (144, 35430), (148, 35442), (150, 35460), (159, 35502), (163, 35529), (170, 35568), (173, 35586), (178, 35607), (187, 35652), (188, 35655),

Gene: Cheesepuff_53 Start: 37297, Stop: 38301, Start Num: 23

Candidate Starts for Cheesepuff_53:

(Start: 23 @37297 has 70 MA's), (41, 37465), (45, 37486), (Start: 48 @37498 has 1 MA's), (64, 37564), (66, 37573), (71, 37609), (87, 37675), (92, 37714), (93, 37717), (96, 37738), (100, 37753), (104, 37774), (107, 37795), (108, 37807), (109, 37810), (118, 37894), (126, 37945), (127, 37951), (136, 38002), (137, 38020), (140, 38041), (148, 38074), (150, 38092), (159, 38134), (163, 38161), (173, 38218), (181, 38248), (187, 38284), (188, 38287),

Gene: Chubbello_34 Start: 27935, Stop: 28801, Start Num: 37

Candidate Starts for Chubbello_34:

(Start: 37 @27935 has 49 MA's), (56, 28016), (63, 28040), (65, 28049), (73, 28097), (95, 28205), (96, 28220), (111, 28331), (137, 28514), (148, 28568), (169, 28697), (178, 28739), (188, 28787),

Gene: Chuckly_47 Start: 35101, Stop: 36108, Start Num: 23

Candidate Starts for Chuckly_47:

(Start: 23 @35101 has 70 MA's), (45, 35293), (Start: 48 @35305 has 1 MA's), (64, 35371), (66, 35380), (71, 35416), (87, 35482), (90, 35494), (92, 35521), (96, 35545), (100, 35560), (104, 35581), (107, 35602), (108, 35614), (109, 35617), (118, 35701), (125, 35746), (126, 35752), (127, 35758), (133, 35782), (136, 35809), (137, 35827), (140, 35848), (148, 35881), (159, 35941), (163, 35968), (170, 36007), (173, 36025), (178, 36046), (181, 36055), (187, 36091), (190, 36100),

Gene: Clifton_42 Start: 31558, Stop: 32337, Start Num: 47

Candidate Starts for Clifton_42:

(Start: 42 @31528 has 1 MA's), (Start: 47 @31558 has 12 MA's), (58, 31582), (59, 31585), (66, 31621), (Start: 67 @31624 has 1 MA's), (73, 31669), (95, 31777), (96, 31792), (108, 31861), (110, 31909), (134, 32026), (139, 32077), (154, 32173), (176, 32278), (177, 32284), (188, 32326), (190, 32332),

Gene: Clown_59 Start: 43467, Stop: 44249, Start Num: 51

Candidate Starts for Clown_59:

(19, 43209), (21, 43230), (31, 43341), (39, 43410), (Start: 51 @43467 has 1 MA's), (66, 43518), (73, 43566), (83, 43611), (91, 43656), (93, 43668), (96, 43689), (99, 43701), (114, 43833), (116, 43836), (132, 43908), (145, 44004), (152, 44055), (158, 44076), (162, 44103), (164, 44118), (177, 44178), (186, 44214),

Gene: Cornucopia_51 Start: 36403, Stop: 37407, Start Num: 23

Candidate Starts for Cornucopia_51:

(Start: 23 @36403 has 70 MA's), (41, 36571), (45, 36592), (Start: 48 @36604 has 1 MA's), (55, 36637), (61, 36652), (64, 36670), (66, 36679), (71, 36715), (82, 36763), (87, 36781), (90, 36793), (92, 36820), (96, 36844), (98, 36856), (100, 36859), (104, 36880), (107, 36901), (108, 36913), (109, 36916), (118, 37000), (126, 37051), (127, 37057), (136, 37108), (137, 37126), (140, 37147), (148, 37180), (150, 37198), (159, 37240), (163, 37267), (173, 37324), (181, 37354), (187, 37390), (188, 37393),

Gene: DaWorst_49 Start: 35931, Stop: 36935, Start Num: 23

Candidate Starts for DaWorst_49:

(Start: 23 @35931 has 70 MA's), (41, 36099), (45, 36120), (Start: 48 @36132 has 1 MA's), (64, 36198), (66, 36207), (71, 36243), (87, 36309), (92, 36348), (93, 36351), (96, 36372), (100, 36387), (104, 36408), (107, 36429), (108, 36441), (109, 36444), (118, 36528), (126, 36579), (127, 36585), (136, 36636), (137, 36654), (140, 36675), (148, 36708), (150, 36726), (159, 36768), (163, 36795), (173, 36852), (181, 36882), (187, 36918), (188, 36921),

Gene: Dante_47 Start: 34836, Stop: 35840, Start Num: 23

Candidate Starts for Dante_47:

(Start: 23 @34836 has 70 MA's), (41, 35004), (45, 35025), (Start: 48 @35037 has 1 MA's), (55, 35070), (61, 35085), (64, 35103), (66, 35112), (71, 35148), (82, 35196), (87, 35214), (90, 35226), (92, 35253), (96, 35277), (98, 35289), (100, 35292), (104, 35313), (107, 35334), (108, 35346), (109, 35349), (118, 35433), (125, 35478), (126, 35484), (127, 35490), (136, 35541), (137, 35559), (140, 35580), (148, 35613), (150, 35631), (159, 35673), (163, 35700), (173, 35757), (181, 35787), (187, 35823), (188, 35826),

Gene: Demsculpinboyz_56 Start: 34780, Stop: 35781, Start Num: 23

Candidate Starts for Demsculpinboyz_56:

(Start: 23 @34780 has 70 MA's), (41, 34948), (45, 34969), (Start: 48 @34981 has 1 MA's), (55, 35014), (61, 35029), (64, 35047), (66, 35056), (71, 35092), (82, 35140), (87, 35158), (90, 35170), (92, 35197), (96, 35221), (98, 35233), (100, 35236), (104, 35257), (107, 35278), (108, 35290), (109, 35293), (118, 35374), (125, 35419), (126, 35425), (136, 35482), (137, 35500), (138, 35503), (140, 35521), (148, 35554), (150, 35572), (159, 35614), (163, 35641), (170, 35680), (173, 35698), (178, 35719), (181, 35728), (187, 35764), (188, 35767),

Gene: DillTech15_46 Start: 34346, Stop: 35350, Start Num: 23

Candidate Starts for DillTech15_46:

(Start: 23 @34346 has 70 MA's), (41, 34514), (45, 34535), (Start: 48 @34547 has 1 MA's), (64, 34613), (66, 34622), (71, 34658), (87, 34724), (92, 34763), (93, 34766), (96, 34787), (100, 34802), (104, 34823), (107, 34844), (108, 34856), (109, 34859), (118, 34943), (126, 34994), (127, 35000), (136, 35051), (137, 35069), (140, 35090), (148, 35123), (150, 35141), (159, 35183), (163, 35210), (173, 35267), (181, 35297), (187, 35333), (188, 35336),

Gene: Dolores_48 Start: 34386, Stop: 35135, Start Num: 50

Candidate Starts for Dolores_48:

(3, 33747), (4, 33801), (5, 33834), (8, 33873), (9, 33894), (10, 33927), (11, 33939), (16, 34062), (17, 34083), (28, 34230), (Start: 50 @34386 has 11 MA's), (59, 34416), (64, 34443), (66, 34452), (90, 34569), (92, 34596), (96, 34620), (101, 34635), (105, 34665), (113, 34755), (114, 34758), (151, 34980),

Gene: Donkeykong_46 Start: 35576, Stop: 36355, Start Num: 47

Candidate Starts for Donkeykong_46:

(Start: 42 @35546 has 1 MA's), (Start: 47 @35576 has 12 MA's), (58, 35600), (59, 35603), (66, 35639), (Start: 67 @35642 has 1 MA's), (73, 35687), (95, 35795), (96, 35810), (108, 35879), (110, 35927), (134, 36044), (139, 36095), (154, 36191), (176, 36296), (177, 36302), (188, 36344), (190, 36350),

Gene: Donovan_34 Start: 27961, Stop: 28824, Start Num: 37

Candidate Starts for Donovan_34:

(Start: 37 @27961 has 49 MA's), (56, 28042), (63, 28066), (65, 28075), (69, 28102), (73, 28123), (92, 28219), (95, 28228), (96, 28243), (111, 28354), (137, 28537), (148, 28591), (169, 28720), (178, 28762), (188, 28810),

Gene: Doomphist_47 Start: 36071, Stop: 37075, Start Num: 23

Candidate Starts for Doomphist_47:

(Start: 23 @36071 has 70 MA's), (45, 36260), (Start: 48 @36272 has 1 MA's), (64, 36338), (66, 36347), (71, 36383), (87, 36449), (90, 36461), (92, 36488), (96, 36512), (100, 36527), (104, 36548), (107, 36569), (108, 36581), (109, 36584), (118, 36668), (125, 36713), (126, 36719), (133, 36749), (136, 36776), (137, 36794), (140, 36815), (148, 36848), (159, 36908), (163, 36935), (170, 36974), (173, 36992), (178, 37013), (181, 37022), (187, 37058), (190, 37067),

Gene: Doomslug_55 Start: 35048, Stop: 36052, Start Num: 23

Candidate Starts for Doomslug_55:

(Start: 23 @35048 has 70 MA's), (41, 35216), (45, 35237), (Start: 48 @35249 has 1 MA's), (55, 35282), (61, 35297), (64, 35315), (66, 35324), (71, 35360), (82, 35408), (87, 35426), (90, 35438), (92, 35465), (96, 35489), (98, 35501), (100, 35504), (104, 35525), (107, 35546), (108, 35558), (109, 35561), (118, 35645), (125, 35690), (126, 35696), (133, 35726), (136, 35753), (137, 35771), (140, 35792), (148, 35825), (150, 35843), (159, 35885), (173, 35969), (178, 35990), (187, 36035), (190, 36044),

Gene: Dori_51 Start: 44920, Stop: 45693, Start Num: 47

Candidate Starts for Dori_51:

(Start: 47 @44920 has 12 MA's), (58, 44941), (66, 44980), (Start: 67 @44983 has 1 MA's), (92, 45124), (95, 45133), (96, 45148), (108, 45217), (110, 45265), (134, 45382), (139, 45433), (154, 45529), (176, 45634), (177, 45640), (188, 45682), (190, 45688),

Gene: Dorothy_44 Start: 34870, Stop: 35874, Start Num: 23

Candidate Starts for Dorothy_44:

(Start: 23 @34870 has 70 MA's), (45, 35059), (Start: 48 @35071 has 1 MA's), (64, 35137), (66, 35146), (71, 35182), (87, 35248), (90, 35260), (92, 35287), (96, 35311), (100, 35326), (104, 35347), (107, 35368), (108, 35380), (109, 35383), (118, 35467), (125, 35512), (126, 35518), (133, 35548), (136, 35575), (137, 35593), (140, 35614), (148, 35647), (159, 35707), (163, 35734), (170, 35773), (173, 35791), (178, 35812), (181, 35821), (187, 35857), (190, 35866),

Gene: DosHalletts_47 Start: 34853, Stop: 35650, Start Num: 47

Candidate Starts for DosHalletts_47:

(Start: 47 @34853 has 12 MA's), (59, 34895), (66, 34931), (Start: 67 @34934 has 1 MA's), (75, 34988), (95, 35090), (96, 35105), (108, 35174), (110, 35222), (134, 35339), (139, 35390), (154, 35486), (176, 35591), (177, 35597), (188, 35639), (190, 35645),

Gene: DotProduct_44 Start: 34531, Stop: 35535, Start Num: 23

Candidate Starts for DotProduct_44:

(Start: 23 @34531 has 70 MA's), (45, 34720), (Start: 48 @34732 has 1 MA's), (64, 34798), (66, 34807), (71, 34843), (87, 34909), (90, 34921), (92, 34948), (96, 34972), (100, 34987), (104, 35008), (107, 35029), (108, 35041), (109, 35044), (118, 35128), (125, 35173), (126, 35179), (133, 35209), (136, 35236), (137, 35254), (140, 35275), (148, 35308), (150, 35326), (159, 35368), (163, 35395), (170, 35434), (173, 35452), (178, 35473), (181, 35482), (187, 35518), (190, 35527),

Gene: Dynamo_34 Start: 28347, Stop: 29213, Start Num: 37

Candidate Starts for Dynamo_34:

(Start: 37 @28347 has 49 MA's), (56, 28428), (63, 28452), (65, 28461), (73, 28509), (95, 28617), (96, 28632), (111, 28743), (137, 28926), (148, 28980), (169, 29109), (178, 29151), (188, 29199),

Gene: Easley_43 Start: 32655, Stop: 33410, Start Num: 50

Candidate Starts for Easley_43:

(Start: 50 @32655 has 11 MA's), (59, 32685), (64, 32712), (66, 32721), (84, 32820), (92, 32865), (95, 32874), (96, 32889), (97, 32898), (122, 33060), (137, 33171), (138, 33174), (151, 33255),

Gene: Eish_48 Start: 35416, Stop: 36417, Start Num: 23

Candidate Starts for Eish_48:

(Start: 23 @35416 has 70 MA's), (41, 35584), (45, 35605), (Start: 48 @35617 has 1 MA's), (64, 35683), (66, 35692), (71, 35728), (87, 35794), (92, 35833), (93, 35836), (98, 35869), (100, 35872), (104, 35893), (107, 35914), (108, 35926), (109, 35929), (118, 36010), (125, 36055), (126, 36061), (133, 36091), (136, 36118), (137, 36136), (138, 36139), (140, 36157), (148, 36190), (150, 36208), (159, 36250), (170, 36316), (178, 36355), (187, 36400),

Gene: Emmaloid_48 Start: 36261, Stop: 37265, Start Num: 23

Candidate Starts for Emmaloid_48:

(Start: 23 @36261 has 70 MA's), (45, 36450), (Start: 48 @36462 has 1 MA's), (64, 36528), (66, 36537), (71, 36573), (87, 36639), (90, 36651), (92, 36678), (96, 36702), (100, 36717), (104, 36738), (107, 36759), (108, 36771), (109, 36774), (118, 36858), (125, 36903), (126, 36909), (133, 36939), (136, 36966), (137, 36984), (140, 37005), (148, 37038), (150, 37056), (159, 37098), (163, 37125), (170, 37164), (173, 37182), (178, 37203), (181, 37212), (187, 37248), (190, 37257),

Gene: Estave1_48 Start: 34820, Stop: 35824, Start Num: 23

Candidate Starts for Estave1_48:

(Start: 23 @34820 has 70 MA's), (41, 34988), (45, 35009), (Start: 48 @35021 has 1 MA's), (55, 35054), (61, 35069), (64, 35087), (66, 35096), (71, 35132), (82, 35180), (87, 35198), (90, 35210), (92, 35237), (96, 35261), (98, 35273), (100, 35276), (104, 35297), (107, 35318), (108, 35330), (109, 35333), (116, 35405), (118, 35417), (125, 35462), (126, 35468), (133, 35498), (136, 35525), (137, 35543), (138, 35546), (140, 35564), (148, 35597), (150, 35615), (159, 35657), (170, 35723), (173, 35741), (178, 35762), (187, 35807),

Gene: Etoile_34 Start: 27939, Stop: 28805, Start Num: 37

Candidate Starts for Etoile_34:

(Start: 37 @27939 has 49 MA's), (56, 28020), (63, 28044), (65, 28053), (73, 28101), (95, 28209), (96, 28224), (97, 28233), (111, 28335), (137, 28518), (148, 28572), (169, 28701), (178, 28743), (188, 28791),

Gene: Faith5x5_37 Start: 28702, Stop: 29454, Start Num: 50

Candidate Starts for Faith5x5_37:

(40, 28657), (Start: 50 @28702 has 11 MA's), (58, 28729), (73, 28816), (75, 28825), (92, 28915), (95, 28924), (96, 28939), (99, 28951), (113, 29074), (114, 29077), (136, 29197), (151, 29299),

Gene: Fastidio_49 Start: 34493, Stop: 35497, Start Num: 23

Candidate Starts for Fastidio_49:

(Start: 23 @34493 has 70 MA's), (45, 34682), (Start: 48 @34694 has 1 MA's), (64, 34760), (66, 34769), (71, 34805), (87, 34871), (90, 34883), (92, 34910), (96, 34934), (100, 34949), (104, 34970), (107, 34991), (108, 35003), (109, 35006), (118, 35090), (126, 35141), (127, 35147), (136, 35198), (137, 35216), (140, 35237), (148, 35270), (150, 35288), (159, 35330), (163, 35357), (173, 35414), (181, 35444), (187, 35480), (188, 35483),

Gene: Fenry_43 Start: 34202, Stop: 34963, Start Num: 53

Candidate Starts for Fenry_43:

(25, 33998), (38, 34127), (Start: 53 @34202 has 17 MA's), (59, 34217), (77, 34316), (80, 34328), (90, 34370), (92, 34397), (108, 34490), (122, 34586), (136, 34676), (146, 34742), (168, 34868),

Gene: Filuzino_45 Start: 34250, Stop: 35254, Start Num: 23

Candidate Starts for Filuzino_45:

(Start: 23 @34250 has 70 MA's), (41, 34418), (45, 34439), (Start: 48 @34451 has 1 MA's), (55, 34484), (61, 34499), (64, 34517), (66, 34526), (71, 34562), (82, 34610), (87, 34628), (90, 34640), (92, 34667), (96, 34691), (98, 34703), (100, 34706), (104, 34727), (107, 34748), (108, 34760), (109, 34763), (118, 34847), (126, 34898), (136, 34955), (137, 34973), (140, 34994), (148, 35027), (150, 35045), (159, 35087), (163, 35114), (173, 35171), (181, 35201), (187, 35237), (188, 35240),

Gene: Firehouse51_47 Start: 36491, Stop: 37288, Start Num: 47

Candidate Starts for Firehouse51_47:

(Start: 47 @36491 has 12 MA's), (59, 36533), (66, 36569), (Start: 67 @36572 has 1 MA's), (75, 36626), (95, 36728), (96, 36743), (108, 36812), (110, 36860), (134, 36977), (139, 37028), (154, 37124), (176, 37229), (177, 37235), (188, 37277), (190, 37283),

Gene: FirstPlacePfu_34 Start: 27971, Stop: 28837, Start Num: 37

Candidate Starts for FirstPlacePfu_34:

(Start: 37 @27971 has 49 MA's), (56, 28052), (63, 28076), (65, 28085), (73, 28133), (95, 28241), (96, 28256), (111, 28367), (137, 28550), (148, 28604), (169, 28733), (178, 28775), (188, 28823),

Gene: Fishburne_34 Start: 27939, Stop: 28805, Start Num: 37

Candidate Starts for Fishburne_34:

(Start: 37 @27939 has 49 MA's), (56, 28020), (63, 28044), (65, 28053), (73, 28101), (95, 28209), (96, 28224), (111, 28335), (137, 28518), (148, 28572), (169, 28701), (178, 28743), (188, 28791),

Gene: Florinda_57 Start: 36157, Stop: 36951, Start Num: 47

Candidate Starts for Florinda_57:

(Start: 47 @36157 has 12 MA's), (59, 36199), (66, 36235), (Start: 67 @36238 has 1 MA's), (71, 36274), (84, 36334), (95, 36391), (96, 36406), (108, 36475), (110, 36523), (134, 36640), (139, 36691), (154, 36787), (176, 36892), (177, 36898), (188, 36940), (190, 36946),

Gene: Frankie_51 Start: 36473, Stop: 37477, Start Num: 23

Candidate Starts for Frankie_51:

(Start: 23 @36473 has 70 MA's), (41, 36641), (45, 36662), (Start: 48 @36674 has 1 MA's), (55, 36707), (61, 36722), (64, 36740), (66, 36749), (71, 36785), (82, 36833), (87, 36851), (90, 36863), (92, 36890), (96, 36914), (98, 36926), (100, 36929), (104, 36950), (107, 36971), (108, 36983), (109, 36986), (116, 37058), (118, 37070), (119, 37073), (125, 37115), (126, 37121), (133, 37151), (136, 37178), (140, 37217), (148, 37250), (150, 37268), (159, 37310), (163, 37337), (170, 37376), (173, 37394), (178, 37415), (181, 37424), (187, 37460), (190, 37469),

Gene: Fruitloop_46 Start: 36116, Stop: 37120, Start Num: 23

Candidate Starts for Fruitloop_46:

(Start: 23 @36116 has 70 MA's), (41, 36284), (45, 36305), (Start: 48 @36317 has 1 MA's), (55, 36350), (61, 36365), (64, 36383), (66, 36392), (71, 36428), (82, 36476), (87, 36494), (90, 36506), (92, 36533), (96, 36557), (98, 36569), (100, 36572), (104, 36593), (107, 36614), (108, 36626), (109, 36629), (116, 36701), (118, 36713), (126, 36764), (127, 36770), (136, 36821), (137, 36839), (140, 36860), (148, 36893), (150, 36911), (159, 36953), (163, 36980), (173, 37037), (181, 37067), (187, 37103), (188, 37106),

Gene: GUmbie_45 Start: 34760, Stop: 35764, Start Num: 23

Candidate Starts for GUmbie_45:

(Start: 23 @34760 has 70 MA's), (45, 34949), (Start: 48 @34961 has 1 MA's), (64, 35027), (66, 35036), (71, 35072), (87, 35138), (90, 35150), (92, 35177), (96, 35201), (100, 35216), (104, 35237), (107, 35258), (108, 35270), (109, 35273), (118, 35357), (125, 35402), (126, 35408), (133, 35438), (136, 35465), (137, 35483), (140, 35504), (148, 35537), (159, 35597), (163, 35624), (170, 35663), (173, 35681), (178, 35702), (181, 35711), (187, 35747), (190, 35756),

Gene: Gallia_8 Start: 3136, Stop: 3990, Start Num: 32

Candidate Starts for Gallia_8:

(32, 3136), (33, 3139), (46, 3184), (71, 3289), (73, 3298), (92, 3394), (97, 3427), (108, 3487), (131, 3655), (136, 3691), (141, 3733), (153, 3808), (164, 3868), (182, 3943),

Gene: GaloreK_34 Start: 27935, Stop: 28798, Start Num: 37

Candidate Starts for GaloreK_34:

(Start: 37 @27935 has 49 MA's), (56, 28016), (63, 28040), (65, 28049), (69, 28076), (73, 28097), (92, 28193), (95, 28202), (96, 28217), (97, 28226), (111, 28328), (137, 28511), (148, 28565), (169, 28694), (178, 28736), (188, 28784),

Gene: Gambino_49 Start: 35195, Stop: 35956, Start Num: 53

Candidate Starts for Gambino_49:

(Start: 53 @35195 has 17 MA's), (59, 35210), (78, 35312), (84, 35345), (92, 35390), (95, 35399), (96, 35414), (108, 35483), (122, 35579), (136, 35669), (168, 35861),

Gene: Gavriela_34 Start: 28196, Stop: 29059, Start Num: 37

Candidate Starts for Gavriela_34:

(Start: 37 @28196 has 49 MA's), (56, 28277), (63, 28301), (65, 28310), (73, 28358), (81, 28382), (95, 28463), (96, 28478), (111, 28589), (137, 28772), (148, 28826), (169, 28955), (178, 28997), (188, 29045),

Gene: GigiOuiOui_44 Start: 34673, Stop: 35677, Start Num: 23

Candidate Starts for GigiOuiOui_44:

(Start: 23 @34673 has 70 MA's), (45, 34862), (Start: 48 @34874 has 1 MA's), (64, 34940), (66, 34949), (71, 34985), (87, 35051), (90, 35063), (92, 35090), (96, 35114), (100, 35129), (104, 35150), (107, 35171), (108, 35183), (109, 35186), (118, 35270), (125, 35315), (126, 35321), (133, 35351), (136, 35378), (137, 35396), (140, 35417), (148, 35450), (159, 35510), (163, 35537), (170, 35576), (173, 35594), (178, 35615), (181, 35624), (187, 35660), (190, 35669),

Gene: Girafales_56 Start: 35966, Stop: 36760, Start Num: 47

Candidate Starts for Girafales_56:

(Start: 47 @35966 has 12 MA's), (59, 36008), (66, 36044), (Start: 67 @36047 has 1 MA's), (73, 36092), (95, 36200), (96, 36215), (97, 36224), (108, 36284), (110, 36332), (134, 36449), (139, 36500), (154, 36596), (176, 36701), (177, 36707), (188, 36749), (190, 36755),

Gene: Girr_48 Start: 35732, Stop: 36736, Start Num: 23

Candidate Starts for Girr_48:

(Start: 23 @35732 has 70 MA's), (45, 35921), (Start: 48 @35933 has 1 MA's), (64, 35999), (66, 36008), (71, 36044), (87, 36110), (90, 36122), (92, 36149), (96, 36173), (100, 36188), (104, 36209), (107, 36230), (108, 36242), (109, 36245), (118, 36329), (125, 36374), (126, 36380), (133, 36410), (136, 36437), (137, 36455), (140, 36476), (148, 36509), (159, 36569), (163, 36596), (170, 36635), (173, 36653), (178, 36674), (181, 36683), (187, 36719), (190, 36728),

Gene: Glaske_34 Start: 28196, Stop: 29059, Start Num: 37

Candidate Starts for Glaske_34:

(Start: 37 @28196 has 49 MA's), (56, 28277), (63, 28301), (65, 28310), (73, 28358), (81, 28382), (95, 28463), (96, 28478), (111, 28589), (137, 28772), (148, 28826), (169, 28955), (178, 28997), (188, 29045),

Gene: GreaseLightnin_34 Start: 28179, Stop: 29045, Start Num: 37

Candidate Starts for GreaseLightnin_34:

(Start: 37 @28179 has 49 MA's), (63, 28284), (65, 28293), (73, 28341), (95, 28449), (96, 28464), (111, 28575), (137, 28758), (148, 28812), (169, 28941), (178, 28983), (188, 29031),

Gene: Grimmer_57 Start: 37247, Stop: 38248, Start Num: 23

Candidate Starts for Grimmer_57:

(Start: 23 @37247 has 70 MA's), (45, 37436), (Start: 48 @37448 has 1 MA's), (61, 37496), (64, 37514), (66, 37523), (71, 37559), (87, 37625), (90, 37637), (92, 37664), (96, 37688), (100, 37703), (104, 37724), (107, 37745), (108, 37757), (109, 37760), (118, 37841), (125, 37886), (126, 37892), (136, 37949), (137, 37967), (140, 37988), (148, 38021), (150, 38039), (159, 38081), (163, 38108), (170, 38147), (173, 38165), (178, 38186), (187, 38231), (188, 38234),

Gene: HC_34 Start: 27658, Stop: 28527, Start Num: 37

Candidate Starts for HC_34:

(Start: 37 @27658 has 49 MA's), (63, 27766), (65, 27775), (73, 27823), (95, 27931), (96, 27946), (111, 28057), (137, 28240), (148, 28294), (169, 28423), (178, 28465), (188, 28513),

Gene: HUHilltop_34 Start: 27972, Stop: 28835, Start Num: 37

Candidate Starts for HUHilltop_34:

(Start: 37 @27972 has 49 MA's), (56, 28053), (63, 28077), (65, 28086), (69, 28113), (73, 28134), (92, 28230), (95, 28239), (96, 28254), (111, 28365), (137, 28548), (148, 28602), (178, 28773), (188, 28821),

Gene: Hamulus_48 Start: 36115, Stop: 37119, Start Num: 23

Candidate Starts for Hamulus_48:

(Start: 23 @36115 has 70 MA's), (45, 36304), (Start: 48 @36316 has 1 MA's), (64, 36382), (66, 36391), (71, 36427), (87, 36493), (90, 36505), (92, 36532), (96, 36556), (100, 36571), (104, 36592), (107, 36613), (108, 36625), (109, 36628), (118, 36712), (125, 36757), (126, 36763), (133, 36793), (136, 36820), (137, 36838), (140, 36859), (148, 36892), (159, 36952), (163, 36979), (170, 37018), (173, 37036), (178, 37057), (181, 37066), (187, 37102), (190, 37111),

Gene: Harley_50 Start: 35468, Stop: 36472, Start Num: 23

Candidate Starts for Harley_50:

(Start: 23 @35468 has 70 MA's), (45, 35657), (Start: 48 @35669 has 1 MA's), (64, 35735), (66, 35744), (71, 35780), (87, 35846), (90, 35858), (92, 35885), (96, 35909), (100, 35924), (104, 35945), (107, 35966), (108, 35978), (109, 35981), (118, 36065), (125, 36110), (126, 36116), (133, 36146), (136, 36173), (137, 36191), (140, 36212), (148, 36245), (159, 36305), (170, 36371), (173, 36389), (178, 36410), (181, 36419), (187, 36455), (190, 36464),

Gene: InLimbo_43 Start: 30497, Stop: 31246, Start Num: 50

Candidate Starts for InLimbo_43:

(Start: 50 @30497 has 11 MA's), (58, 30524), (59, 30527), (Start: 67 @30566 has 1 MA's), (73, 30611), (85, 30662), (90, 30680), (96, 30731), (114, 30869), (124, 30920), (151, 31091),

Gene: Island3_36 Start: 29775, Stop: 30644, Start Num: 37

Candidate Starts for Island3_36:

(Start: 37 @29775 has 49 MA's), (63, 29883), (65, 29892), (73, 29940), (95, 30048), (96, 30063), (111, 30174), (137, 30357), (148, 30411), (169, 30540), (178, 30582), (188, 30630),

Gene: Jalammah_48 Start: 35515, Stop: 36279, Start Num: 53

Candidate Starts for Jalammah_48:

(25, 35311), (38, 35440), (Start: 53 @35515 has 17 MA's), (73, 35614), (76, 35626), (91, 35704), (93, 35716), (96, 35737), (97, 35746), (108, 35806), (122, 35902), (136, 35992), (168, 36184),

Gene: Jant_52 Start: 37127, Stop: 38131, Start Num: 23

Candidate Starts for Jant_52:

(Start: 23 @37127 has 70 MA's), (41, 37295), (45, 37316), (Start: 48 @37328 has 1 MA's), (55, 37361), (61, 37376), (64, 37394), (66, 37403), (71, 37439), (82, 37487), (87, 37505), (90, 37517), (92, 37544), (96, 37568), (98, 37580), (100, 37583), (104, 37604), (107, 37625), (108, 37637), (109, 37640), (118, 37724), (125, 37769), (126, 37775), (136, 37832), (137, 37850), (140, 37871), (148, 37904), (150, 37922), (159, 37964), (163, 37991), (173, 38048), (181, 38078), (187, 38114), (188, 38117),

Gene: Jebeks_35 Start: 27924, Stop: 28790, Start Num: 37

Candidate Starts for Jebeks_35:

(Start: 37 @27924 has 49 MA's), (56, 28005), (63, 28029), (65, 28038), (69, 28065), (73, 28086), (95, 28194), (96, 28209), (111, 28320), (137, 28503), (148, 28557), (169, 28686), (178, 28728), (188, 28776),

Gene: Jennelsea_44 Start: 32861, Stop: 33640, Start Num: 47

Candidate Starts for Jennelsea_44:

(Start: 42 @32831 has 1 MA's), (Start: 47 @32861 has 12 MA's), (58, 32885), (59, 32888), (66, 32924), (Start: 67 @32927 has 1 MA's), (73, 32972), (95, 33080), (96, 33095), (108, 33164), (110, 33212),

(134, 33329), (139, 33380), (154, 33476), (176, 33581), (177, 33587), (188, 33629), (190, 33635),

Gene: Job42_48 Start: 36721, Stop: 37725, Start Num: 23

Candidate Starts for Job42_48:

(Start: 23 @36721 has 70 MA's), (45, 36910), (Start: 48 @36922 has 1 MA's), (64, 36988), (66, 36997), (71, 37033), (87, 37099), (90, 37111), (92, 37138), (96, 37162), (100, 37177), (104, 37198), (107, 37219), (108, 37231), (109, 37234), (118, 37318), (125, 37363), (126, 37369), (133, 37399), (136, 37426), (137, 37444), (140, 37465), (148, 37498), (159, 37558), (163, 37585), (170, 37624), (173, 37642), (178, 37663), (181, 37672), (187, 37708), (190, 37717),

Gene: Jung_33 Start: 27903, Stop: 28766, Start Num: 37

Candidate Starts for Jung_33:

(Start: 37 @27903 has 49 MA's), (56, 27984), (63, 28008), (65, 28017), (73, 28065), (81, 28089), (95, 28170), (96, 28185), (111, 28296), (137, 28479), (148, 28533), (169, 28662), (178, 28704), (188, 28752),

Gene: Juniormint_34 Start: 27975, Stop: 28841, Start Num: 37

Candidate Starts for Juniormint_34:

(Start: 37 @27975 has 49 MA's), (56, 28056), (63, 28080), (65, 28089), (69, 28116), (73, 28137), (95, 28245), (96, 28260), (111, 28371), (137, 28554), (148, 28608), (169, 28737), (178, 28779), (188, 28827),

Gene: KappaFarmDelta_46 Start: 33140, Stop: 33901, Start Num: 53

Candidate Starts for KappaFarmDelta_46:

(25, 32939), (38, 33065), (Start: 53 @33140 has 17 MA's), (59, 33155), (77, 33254), (80, 33266), (90, 33308), (92, 33335), (107, 33416), (108, 33428), (122, 33524), (136, 33614), (146, 33680), (168, 33806),

Gene: Karhdo_46 Start: 35555, Stop: 36559, Start Num: 23

Candidate Starts for Karhdo_46:

(Start: 23 @35555 has 70 MA's), (45, 35744), (Start: 48 @35756 has 1 MA's), (64, 35822), (66, 35831), (71, 35867), (87, 35933), (90, 35945), (92, 35972), (96, 35996), (100, 36011), (104, 36032), (107, 36053), (108, 36065), (109, 36068), (118, 36152), (125, 36197), (126, 36203), (133, 36233), (136, 36260), (137, 36278), (140, 36299), (148, 36332), (159, 36392), (163, 36419), (170, 36458), (173, 36476), (178, 36497), (181, 36506), (187, 36542), (190, 36551),

Gene: Kari_34 Start: 27936, Stop: 28802, Start Num: 37

Candidate Starts for Kari_34:

(Start: 37 @27936 has 49 MA's), (56, 28017), (63, 28041), (65, 28050), (73, 28098), (95, 28206), (96, 28221), (111, 28332), (137, 28515), (148, 28569), (169, 28698), (178, 28740), (188, 28788),

Gene: KilKor_34 Start: 28196, Stop: 29059, Start Num: 37

Candidate Starts for KilKor_34:

(Start: 37 @28196 has 49 MA's), (56, 28277), (63, 28301), (65, 28310), (73, 28358), (81, 28382), (95, 28463), (96, 28478), (111, 28589), (137, 28772), (148, 28826), (169, 28955), (178, 28997), (188, 29045),

Gene: Krakatau_45 Start: 35226, Stop: 36230, Start Num: 23

Candidate Starts for Krakatau_45:

(1, 34731), (2, 34782), (6, 34905), (7, 34911), (8, 34926), (10, 34980), (13, 35052), (14, 35061), (Start: 23 @35226 has 70 MA's), (45, 35415), (Start: 48 @35427 has 1 MA's), (64, 35493), (66, 35502), (71, 35538), (87, 35604), (90, 35616), (92, 35643), (96, 35667), (100, 35682), (104, 35703), (107, 35724), (108, 35736), (109, 35739), (118, 35823), (125, 35868), (126, 35874), (127, 35880), (133, 35904),

(136, 35931), (137, 35949), (140, 35970), (148, 36003), (159, 36063), (163, 36090), (170, 36129), (173, 36147), (178, 36168), (181, 36177), (187, 36213), (190, 36222),

Gene: KristaRAM_47 Start: 36438, Stop: 37442, Start Num: 23

Candidate Starts for KristaRAM_47:

(Start: 23 @36438 has 70 MA's), (41, 36606), (45, 36627), (Start: 48 @36639 has 1 MA's), (55, 36672), (61, 36687), (64, 36705), (66, 36714), (71, 36750), (82, 36798), (87, 36816), (90, 36828), (92, 36855), (96, 36879), (98, 36891), (100, 36894), (104, 36915), (107, 36936), (108, 36948), (109, 36951), (118, 37035), (125, 37080), (126, 37086), (133, 37116), (136, 37143), (137, 37161), (140, 37182), (148, 37215), (150, 37233), (159, 37275), (163, 37302), (173, 37359), (181, 37389), (187, 37425), (188, 37428),

Gene: Ksquared_34 Start: 27953, Stop: 28819, Start Num: 37

Candidate Starts for Ksquared_34:

(Start: 37 @27953 has 49 MA's), (56, 28034), (63, 28058), (65, 28067), (69, 28094), (73, 28115), (95, 28223), (96, 28238), (111, 28349), (137, 28532), (148, 28586), (169, 28715), (178, 28757), (188, 28805),

Gene: Langerak_34 Start: 27955, Stop: 28818, Start Num: 37

Candidate Starts for Langerak_34:

(Start: 37 @27955 has 49 MA's), (56, 28036), (63, 28060), (65, 28069), (69, 28096), (73, 28117), (92, 28213), (95, 28222), (96, 28237), (97, 28246), (111, 28348), (137, 28531), (148, 28585), (169, 28714), (178, 28756), (188, 28804),

Gene: LastJedi_41 Start: 31571, Stop: 32380, Start Num: 42

Candidate Starts for LastJedi_41:

(Start: 42 @31571 has 1 MA's), (Start: 47 @31601 has 12 MA's), (58, 31625), (59, 31628), (66, 31664), (Start: 67 @31667 has 1 MA's), (73, 31712), (95, 31820), (96, 31835), (108, 31904), (110, 31952), (134, 32069), (139, 32120), (154, 32216), (176, 32321), (177, 32327), (188, 32369), (190, 32375),

Gene: Latretium_50 Start: 36344, Stop: 37345, Start Num: 23

Candidate Starts for Latretium_50:

(Start: 23 @36344 has 70 MA's), (41, 36512), (45, 36533), (Start: 48 @36545 has 1 MA's), (64, 36611), (66, 36620), (71, 36656), (87, 36722), (88, 36728), (90, 36734), (92, 36761), (98, 36797), (100, 36800), (104, 36821), (107, 36842), (108, 36854), (109, 36857), (118, 36938), (125, 36983), (126, 36989), (127, 36995), (133, 37019), (136, 37046), (137, 37064), (140, 37085), (148, 37118), (150, 37136), (159, 37178), (170, 37244), (173, 37262), (178, 37283), (187, 37328),

Gene: LilMoolah_46 Start: 35122, Stop: 36126, Start Num: 23

Candidate Starts for LilMoolah_46:

(15, 34966), (Start: 23 @35122 has 70 MA's), (Start: 48 @35323 has 1 MA's), (64, 35389), (66, 35398), (71, 35434), (87, 35500), (88, 35506), (90, 35512), (92, 35539), (98, 35575), (100, 35578), (104, 35599), (107, 35620), (108, 35632), (109, 35635), (118, 35719), (125, 35764), (126, 35770), (127, 35776), (133, 35800), (136, 35827), (137, 35845), (140, 35866), (148, 35899), (159, 35959), (163, 35986), (170, 36025), (173, 36043), (178, 36064), (187, 36109), (190, 36118),

Gene: LittleShirley_47 Start: 36153, Stop: 37157, Start Num: 23

Candidate Starts for LittleShirley_47:

(Start: 23 @36153 has 70 MA's), (41, 36321), (45, 36342), (Start: 48 @36354 has 1 MA's), (64, 36420), (66, 36429), (71, 36465), (87, 36531), (92, 36570), (93, 36573), (96, 36594), (100, 36609), (104, 36630), (107, 36651), (108, 36663), (109, 36666), (118, 36750), (125, 36795), (126, 36801), (133, 36831), (136, 36858), (137, 36876), (140, 36897), (148, 36930), (150, 36948), (159, 36990), (163, 37017), (170, 37056), (173, 37074), (178, 37095), (181, 37104), (187, 37140), (190, 37149),

Gene: LordVader_44 Start: 30174, Stop: 30983, Start Num: 42

Candidate Starts for LordVader_44:

(Start: 42 @30174 has 1 MA's), (Start: 47 @30204 has 12 MA's), (58, 30228), (59, 30231), (66, 30267), (Start: 67 @30270 has 1 MA's), (73, 30315), (95, 30423), (96, 30438), (108, 30507), (110, 30555), (134, 30672), (139, 30723), (154, 30819), (176, 30924), (177, 30930), (188, 30972), (190, 30978),

Gene: MadMen_42 Start: 34172, Stop: 35179, Start Num: 23

Candidate Starts for MadMen_42:

(1, 33677), (2, 33728), (6, 33851), (7, 33857), (8, 33872), (10, 33926), (13, 33998), (14, 34007), (Start: 23 @34172 has 70 MA's), (45, 34364), (Start: 48 @34376 has 1 MA's), (64, 34442), (66, 34451), (71, 34487), (87, 34553), (90, 34565), (92, 34592), (96, 34616), (100, 34631), (104, 34652), (107, 34673), (108, 34685), (109, 34688), (118, 34772), (125, 34817), (126, 34823), (127, 34829), (133, 34853), (136, 34880), (137, 34898), (140, 34919), (148, 34952), (159, 35012), (163, 35039), (170, 35078), (173, 35096), (178, 35117), (181, 35126), (187, 35162), (190, 35171),

Gene: Madavieve_43 Start: 34739, Stop: 35503, Start Num: 50

Candidate Starts for Madavieve_43:

(Start: 50 @34739 has 11 MA's), (58, 34766), (59, 34769), (64, 34796), (66, 34805), (77, 34868), (80, 34880), (89, 34922), (92, 34949), (108, 35042), (112, 35096), (128, 35189), (134, 35210), (136, 35234), (137, 35252), (140, 35273), (141, 35276), (142, 35279), (149, 35303), (157, 35354), (158, 35357), (171, 35417), (179, 35453), (183, 35474),

Gene: Madiba_43 Start: 33464, Stop: 34468, Start Num: 23

Candidate Starts for Madiba_43:

(Start: 23 @33464 has 70 MA's), (45, 33653), (Start: 48 @33665 has 1 MA's), (64, 33731), (66, 33740), (71, 33776), (87, 33842), (90, 33854), (92, 33881), (96, 33905), (100, 33920), (104, 33941), (107, 33962), (108, 33974), (109, 33977), (118, 34061), (125, 34106), (126, 34112), (133, 34142), (136, 34169), (137, 34187), (140, 34208), (148, 34241), (159, 34301), (163, 34328), (170, 34367), (173, 34385), (178, 34406), (181, 34415), (187, 34451), (190, 34460),

Gene: Majeke_34 Start: 27977, Stop: 28843, Start Num: 37

Candidate Starts for Majeke_34:

(Start: 37 @27977 has 49 MA's), (56, 28058), (63, 28082), (65, 28091), (73, 28139), (95, 28247), (96, 28262), (111, 28373), (137, 28556), (148, 28610), (169, 28739), (178, 28781), (188, 28829),

Gene: Malachai_44 Start: 35305, Stop: 36069, Start Num: 53

Candidate Starts for Malachai_44:

(22, 35065), (27, 35119), (30, 35164), (38, 35230), (Start: 53 @35305 has 17 MA's), (59, 35320), (Start: 67 @35359 has 1 MA's), (76, 35416), (91, 35494), (93, 35506), (96, 35527), (108, 35596), (122, 35692), (136, 35782), (168, 35974),

Gene: Malithi_34 Start: 27862, Stop: 28728, Start Num: 37

Candidate Starts for Malithi_34:

(Start: 37 @27862 has 49 MA's), (56, 27943), (63, 27967), (65, 27976), (69, 28003), (73, 28024), (95, 28132), (96, 28147), (111, 28258), (137, 28441), (148, 28495), (178, 28666), (188, 28714),

Gene: Mangethe_34 Start: 27977, Stop: 28843, Start Num: 37

Candidate Starts for Mangethe_34:

(Start: 37 @27977 has 49 MA's), (56, 28058), (63, 28082), (65, 28091), (73, 28139), (95, 28247), (96, 28262), (111, 28373), (137, 28556), (148, 28610), (169, 28739), (178, 28781), (188, 28829),

Gene: Mantra_44 Start: 34639, Stop: 35643, Start Num: 23

Candidate Starts for Mantra_44:

(Start: 23 @34639 has 70 MA's), (45, 34828), (Start: 48 @34840 has 1 MA's), (64, 34906), (66, 34915), (71, 34951), (87, 35017), (90, 35029), (92, 35056), (96, 35080), (100, 35095), (104, 35116), (107, 35137), (108, 35149), (109, 35152), (118, 35236), (125, 35281), (126, 35287), (133, 35317), (136, 35344), (137, 35362), (140, 35383), (148, 35416), (159, 35476), (163, 35503), (170, 35542), (173, 35560), (178, 35581), (181, 35590), (187, 35626), (190, 35635),

Gene: Marker_48 Start: 35024, Stop: 36025, Start Num: 23

Candidate Starts for Marker_48:

(Start: 23 @35024 has 70 MA's), (41, 35192), (45, 35213), (Start: 48 @35225 has 1 MA's), (64, 35291), (66, 35300), (71, 35336), (87, 35402), (92, 35441), (93, 35444), (98, 35477), (100, 35480), (104, 35501), (107, 35522), (108, 35534), (109, 35537), (118, 35618), (125, 35663), (126, 35669), (133, 35699), (136, 35726), (137, 35744), (138, 35747), (140, 35765), (148, 35798), (150, 35816), (159, 35858), (163, 35885), (170, 35924), (173, 35942), (178, 35963), (181, 35972), (187, 36008), (190, 36017),

Gene: Megiddo_34 Start: 28196, Stop: 29059, Start Num: 37

Candidate Starts for Megiddo_34:

(Start: 37 @28196 has 49 MA's), (56, 28277), (63, 28301), (65, 28310), (73, 28358), (81, 28382), (95, 28463), (96, 28478), (111, 28589), (137, 28772), (148, 28826), (169, 28955), (178, 28997), (188, 29045),

Gene: Mellie_43 Start: 33024, Stop: 33788, Start Num: 53

Candidate Starts for Mellie_43:

(18, 32739), (27, 32838), (38, 32949), (Start: 53 @33024 has 17 MA's), (73, 33123), (95, 33231), (96, 33246), (108, 33315), (122, 33411), (136, 33501), (137, 33519), (168, 33693),

Gene: Min1_10 Start: 3743, Stop: 4495, Start Num: 58

Candidate Starts for Min1_10:

(44, 3686), (54, 3734), (58, 3743), (60, 3749), (64, 3773), (69, 3809), (86, 3881), (94, 3935), (121, 4118), (138, 4235), (159, 4346), (172, 4418), (182, 4466),

Gene: MissRona_47 Start: 35196, Stop: 35957, Start Num: 53

Candidate Starts for MissRona_47:

(Start: 53 @35196 has 17 MA's), (59, 35211), (78, 35313), (84, 35346), (92, 35391), (95, 35400), (96, 35415), (108, 35484), (122, 35580), (136, 35670), (168, 35862),

Gene: MisterCuddles_47 Start: 35732, Stop: 36736, Start Num: 23

Candidate Starts for MisterCuddles_47:

(Start: 23 @35732 has 70 MA's), (45, 35921), (Start: 48 @35933 has 1 MA's), (64, 35999), (66, 36008), (71, 36044), (87, 36110), (90, 36122), (92, 36149), (96, 36173), (100, 36188), (104, 36209), (107, 36230), (108, 36242), (109, 36245), (118, 36329), (125, 36374), (126, 36380), (133, 36410), (136, 36437), (137, 36455), (140, 36476), (148, 36509), (159, 36569), (163, 36596), (170, 36635), (173, 36653), (178, 36674), (181, 36683), (187, 36719), (190, 36728),

Gene: MortyNRick_52 Start: 37928, Stop: 38608, Start Num: 67

Candidate Starts for MortyNRick_52:

(Start: 50 @37859 has 11 MA's), (66, 37925), (Start: 67 @37928 has 1 MA's), (73, 37973), (85, 38024), (90, 38042), (96, 38093), (114, 38231), (130, 38309), (151, 38453), (174, 38546),

Gene: Murp_47 Start: 36766, Stop: 37527, Start Num: 53

Candidate Starts for Murp_47:

(38, 36691), (Start: 53 @36766 has 17 MA's), (59, 36781), (77, 36880), (80, 36892), (90, 36934), (92, 36961), (107, 37042), (108, 37054), (122, 37150), (136, 37240), (146, 37306), (168, 37432),

Gene: Mwanjiwa_53 Start: 36107, Stop: 37108, Start Num: 23

Candidate Starts for Mwanjiwa_53:

(Start: 23 @36107 has 70 MA's), (41, 36275), (45, 36296), (Start: 48 @36308 has 1 MA's), (64, 36374), (66, 36383), (71, 36419), (87, 36485), (88, 36491), (90, 36497), (92, 36524), (98, 36560), (100, 36563), (104, 36584), (107, 36605), (108, 36617), (109, 36620), (118, 36701), (125, 36746), (126, 36752), (133, 36782), (136, 36809), (137, 36827), (140, 36848), (148, 36881), (150, 36899), (159, 36941), (170, 37007), (173, 37025), (178, 37046), (187, 37091),

Gene: Nazo_38 Start: 30066, Stop: 30869, Start Num: 43

Candidate Starts for Nazo_38:

(Start: 43 @30066 has 3 MA's), (Start: 67 @30168 has 1 MA's), (71, 30204), (108, 30396), (118, 30492), (134, 30576), (141, 30642), (142, 30645), (147, 30669), (156, 30723), (161, 30762), (165, 30783), (166, 30786), (180, 30855),

Gene: Necropolis_34 Start: 27936, Stop: 28802, Start Num: 37

Candidate Starts for Necropolis_34:

(Start: 37 @27936 has 49 MA's), (56, 28017), (63, 28041), (65, 28050), (73, 28098), (95, 28206), (96, 28221), (111, 28332), (137, 28515), (148, 28569), (169, 28698), (178, 28740), (188, 28788),

Gene: Nivrat_45 Start: 34995, Stop: 35999, Start Num: 23

Candidate Starts for Nivrat_45:

(15, 34839), (Start: 23 @34995 has 70 MA's), (Start: 48 @35196 has 1 MA's), (64, 35262), (66, 35271), (71, 35307), (87, 35373), (88, 35379), (90, 35385), (92, 35412), (98, 35448), (100, 35451), (104, 35472), (107, 35493), (108, 35505), (109, 35508), (118, 35592), (125, 35637), (126, 35643), (127, 35649), (133, 35673), (136, 35700), (137, 35718), (140, 35739), (148, 35772), (159, 35832), (163, 35859), (170, 35898), (173, 35916), (178, 35937), (187, 35982), (190, 35991),

Gene: Ogopogo_48 Start: 34646, Stop: 35650, Start Num: 23

Candidate Starts for Ogopogo_48:

(Start: 23 @34646 has 70 MA's), (41, 34814), (45, 34835), (Start: 48 @34847 has 1 MA's), (64, 34913), (66, 34922), (71, 34958), (87, 35024), (92, 35063), (93, 35066), (96, 35087), (100, 35102), (104, 35123), (107, 35144), (108, 35156), (109, 35159), (118, 35243), (126, 35294), (127, 35300), (136, 35351), (137, 35369), (140, 35390), (148, 35423), (150, 35441), (159, 35483), (163, 35510), (173, 35567), (181, 35597), (187, 35633), (188, 35636),

Gene: Okabe_43 Start: 30988, Stop: 31992, Start Num: 23

Candidate Starts for Okabe_43:

(Start: 23 @30988 has 70 MA's), (41, 31156), (45, 31177), (Start: 48 @31189 has 1 MA's), (55, 31222), (61, 31237), (64, 31255), (66, 31264), (71, 31300), (82, 31348), (87, 31366), (90, 31378), (92, 31405), (96, 31429), (98, 31441), (100, 31444), (104, 31465), (107, 31486), (108, 31498), (109, 31501), (116, 31573), (118, 31585), (126, 31636), (136, 31693), (137, 31711), (140, 31732), (148, 31765), (150, 31783), (159, 31825), (170, 31891), (173, 31909), (178, 31930), (187, 31975), (190, 31984),

Gene: Oregano_48 Start: 33939, Stop: 34688, Start Num: 50

Candidate Starts for Oregano_48:

(29, 33786), (40, 33894), (Start: 50 @33939 has 11 MA's), (59, 33969), (64, 33996), (66, 34005), (90, 34122), (92, 34149), (96, 34173), (101, 34188), (105, 34218), (113, 34308), (114, 34311), (151, 34533),

Gene: P1201_08 Start: 2597, Stop: 3520, Start Num: 32

Candidate Starts for P1201_08:

(32, 2597), (33, 2600), (36, 2642), (46, 2690), (66, 2765), (71, 2804), (74, 2816), (88, 2882), (92, 2924), (97, 2957), (108, 3017), (131, 3185), (141, 3263), (164, 3398), (182, 3473), (189, 3509), (190, 3512),

Gene: PMC_42 Start: 34542, Stop: 35546, Start Num: 23

Candidate Starts for PMC_42:

(Start: 23 @34542 has 70 MA's), (45, 34731), (Start: 48 @34743 has 1 MA's), (64, 34809), (66, 34818), (71, 34854), (87, 34920), (90, 34932), (92, 34959), (96, 34983), (100, 34998), (104, 35019), (107, 35040), (108, 35052), (109, 35055), (118, 35139), (125, 35184), (126, 35190), (133, 35220), (136, 35247), (137, 35265), (140, 35286), (148, 35319), (159, 35379), (170, 35445), (173, 35463), (178, 35484), (181, 35493), (187, 35529), (190, 35538),

Gene: PeanutPie_34 Start: 27935, Stop: 28798, Start Num: 37

Candidate Starts for PeanutPie_34:

(Start: 37 @27935 has 49 MA's), (56, 28016), (63, 28040), (65, 28049), (73, 28097), (92, 28193), (95, 28202), (96, 28217), (111, 28328), (137, 28511), (148, 28565), (169, 28694), (178, 28736), (188, 28784),

Gene: Pepperoni_38 Start: 29759, Stop: 30508, Start Num: 50

Candidate Starts for Pepperoni_38:

(Start: 50 @29759 has 11 MA's), (58, 29786), (59, 29789), (Start: 67 @29828 has 1 MA's), (73, 29873), (85, 29924), (90, 29942), (96, 29993), (114, 30131), (124, 30182), (151, 30353),

Gene: Phalconet_46 Start: 34873, Stop: 35877, Start Num: 23

Candidate Starts for Phalconet_46:

(Start: 23 @34873 has 70 MA's), (41, 35041), (45, 35062), (Start: 48 @35074 has 1 MA's), (55, 35107), (61, 35122), (64, 35140), (66, 35149), (71, 35185), (82, 35233), (87, 35251), (90, 35263), (92, 35290), (96, 35314), (98, 35326), (100, 35329), (104, 35350), (107, 35371), (108, 35383), (109, 35386), (116, 35458), (118, 35470), (126, 35521), (136, 35578), (137, 35596), (140, 35617), (148, 35650), (150, 35668), (159, 35710), (170, 35776), (173, 35794), (178, 35815), (187, 35860), (190, 35869),

Gene: Phalm_34 Start: 28196, Stop: 29059, Start Num: 37

Candidate Starts for Phalm_34:

(Start: 37 @28196 has 49 MA's), (56, 28277), (63, 28301), (65, 28310), (73, 28358), (81, 28382), (95, 28463), (96, 28478), (111, 28589), (137, 28772), (148, 28826), (169, 28955), (178, 28997), (188, 29045),

Gene: Phasih_45 Start: 35085, Stop: 36089, Start Num: 23

Candidate Starts for Phasih_45:

(15, 34929), (Start: 23 @35085 has 70 MA's), (Start: 48 @35286 has 1 MA's), (64, 35352), (66, 35361), (71, 35397), (87, 35463), (90, 35475), (92, 35502), (96, 35526), (100, 35541), (104, 35562), (107, 35583), (108, 35595), (109, 35598), (118, 35682), (125, 35727), (126, 35733), (133, 35763), (136, 35790), (137, 35808), (140, 35829), (148, 35862), (159, 35922), (170, 35988), (173, 36006), (178, 36027), (181, 36036), (187, 36072), (190, 36081),

Gene: Phegasus_34 Start: 27944, Stop: 28810, Start Num: 37

Candidate Starts for Phegasus_34:

(Start: 37 @27944 has 49 MA's), (56, 28025), (63, 28049), (65, 28058), (73, 28106), (95, 28214), (96, 28229), (111, 28340), (137, 28523), (148, 28577), (169, 28706), (178, 28748), (188, 28796),

Gene: PhesterPhotato_49 Start: 35828, Stop: 36832, Start Num: 23

Candidate Starts for PhesterPhotato_49:

(Start: 23 @35828 has 70 MA's), (41, 35996), (45, 36017), (Start: 48 @36029 has 1 MA's), (55, 36062), (61, 36077), (64, 36095), (66, 36104), (71, 36140), (82, 36188), (87, 36206), (90, 36218), (92, 36245), (96, 36269), (98, 36281), (100, 36284), (104, 36305), (107, 36326), (108, 36338), (109, 36341), (116, 36413), (118, 36425), (126, 36476), (136, 36533), (137, 36551), (140, 36572), (148, 36605), (150, 36623), (159, 36665), (170, 36731), (173, 36749), (178, 36770), (187, 36815), (190, 36824),

Gene: Phineas_34 Start: 28307, Stop: 29173, Start Num: 37

Candidate Starts for Phineas_34:

(Start: 37 @28307 has 49 MA's), (56, 28388), (63, 28412), (65, 28421), (73, 28469), (95, 28577), (96, 28592), (111, 28703), (137, 28886), (148, 28940), (169, 29069), (178, 29111), (188, 29159),

Gene: PhorbesPhlower_43 Start: 29950, Stop: 30699, Start Num: 50

Candidate Starts for PhorbesPhlower_43:

(Start: 50 @29950 has 11 MA's), (58, 29977), (59, 29980), (Start: 67 @30019 has 1 MA's), (73, 30064), (85, 30115), (90, 30133), (96, 30184), (114, 30322), (124, 30373), (151, 30544),

Gene: PhriskyACE_44 Start: 34290, Stop: 35057, Start Num: 50

Candidate Starts for PhriskyACE_44:

(Start: 50 @34290 has 11 MA's), (58, 34317), (59, 34320), (64, 34347), (73, 34404), (78, 34422), (95, 34512), (96, 34527), (99, 34539), (112, 34650), (134, 34764), (136, 34788), (137, 34806), (140, 34827), (141, 34830), (142, 34833), (149, 34857), (157, 34908), (158, 34911),

Gene: Pippy_45 Start: 33164, Stop: 33943, Start Num: 47

Candidate Starts for Pippy_45:

(Start: 42 @33134 has 1 MA's), (Start: 47 @33164 has 12 MA's), (58, 33188), (59, 33191), (66, 33227), (Start: 67 @33230 has 1 MA's), (73, 33275), (95, 33383), (96, 33398), (108, 33467), (110, 33515), (134, 33632), (139, 33683), (154, 33779), (176, 33884), (177, 33890), (188, 33932), (190, 33938),

Gene: Poenanya_47 Start: 36071, Stop: 37075, Start Num: 23

Candidate Starts for Poenanya_47:

(Start: 23 @36071 has 70 MA's), (45, 36260), (Start: 48 @36272 has 1 MA's), (64, 36338), (66, 36347), (71, 36383), (87, 36449), (90, 36461), (92, 36488), (96, 36512), (100, 36527), (104, 36548), (107, 36569), (108, 36581), (109, 36584), (118, 36668), (125, 36713), (126, 36719), (133, 36749), (136, 36776), (137, 36794), (140, 36815), (148, 36848), (159, 36908), (163, 36935), (170, 36974), (173, 36992), (178, 37013), (181, 37022), (187, 37058), (190, 37067),

Gene: Polkaroo_34 Start: 27953, Stop: 28816, Start Num: 37

Candidate Starts for Polkaroo_34:

(Start: 37 @27953 has 49 MA's), (56, 28034), (63, 28058), (65, 28067), (73, 28115), (81, 28139), (95, 28220), (96, 28235), (111, 28346), (137, 28529), (148, 28583), (169, 28712), (178, 28754), (188, 28802),

Gene: Pollywog_46 Start: 35249, Stop: 36253, Start Num: 23

Candidate Starts for Pollywog_46:

(Start: 23 @35249 has 70 MA's), (45, 35438), (Start: 48 @35450 has 1 MA's), (64, 35516), (66, 35525), (71, 35561), (87, 35627), (90, 35639), (92, 35666), (96, 35690), (100, 35705), (104, 35726), (107, 35747), (108, 35759), (109, 35762), (118, 35846), (125, 35891), (126, 35897), (133, 35927), (136, 35954), (137, 35972), (140, 35993), (148, 36026), (159, 36086), (170, 36152), (173, 36170), (178, 36191), (181, 36200), (187, 36236), (190, 36245),

Gene: PopTart_43 Start: 34554, Stop: 35558, Start Num: 23

Candidate Starts for PopTart_43:

(Start: 23 @34554 has 70 MA's), (41, 34722), (45, 34743), (Start: 48 @34755 has 1 MA's), (55, 34788), (61, 34803), (64, 34821), (66, 34830), (71, 34866), (82, 34914), (87, 34932), (90, 34944), (92, 34971), (96, 34995), (98, 35007), (100, 35010), (104, 35031), (107, 35052), (108, 35064), (109, 35067), (116, 35139), (118, 35151), (125, 35196), (126, 35202), (133, 35232), (136, 35259), (137, 35277), (138, 35280), (140, 35298), (148, 35331), (150, 35349), (159, 35391), (170, 35457), (173, 35475), (178, 35496), (187, 35541),

Gene: Purky_41 Start: 30689, Stop: 31480, Start Num: 43

Candidate Starts for Purky_41:

(Start: 43 @30689 has 3 MA's), (Start: 67 @30788 has 1 MA's), (71, 30824), (92, 30923), (108, 31016), (134, 31196), (137, 31238), (141, 31262), (142, 31265), (147, 31289), (155, 31340), (156, 31343), (161, 31382), (165, 31403), (175, 31454),

Gene: Pygmy_36 Start: 29778, Stop: 30644, Start Num: 37

Candidate Starts for Pygmy_36:

(Start: 37 @29778 has 49 MA's), (56, 29859), (63, 29883), (65, 29892), (69, 29919), (73, 29940), (95, 30048), (96, 30063), (111, 30174), (137, 30357), (148, 30411), (178, 30582), (188, 30630),

Gene: QueenHazel_32 Start: 27811, Stop: 28680, Start Num: 37

Candidate Starts for QueenHazel_32:

(Start: 37 @27811 has 49 MA's), (63, 27919), (65, 27928), (73, 27976), (95, 28084), (96, 28099), (111, 28210), (137, 28393), (148, 28447), (169, 28576), (178, 28618), (188, 28666),

Gene: Quico_55 Start: 35977, Stop: 36771, Start Num: 47

Candidate Starts for Quico_55:

(Start: 47 @35977 has 12 MA's), (59, 36019), (66, 36055), (Start: 67 @36058 has 1 MA's), (71, 36094), (84, 36154), (95, 36211), (96, 36226), (108, 36295), (110, 36343), (134, 36460), (139, 36511), (154, 36607), (176, 36712), (177, 36718), (188, 36760), (190, 36766),

Gene: RedBird_44 Start: 34882, Stop: 35886, Start Num: 23

Candidate Starts for RedBird_44:

(Start: 23 @34882 has 70 MA's), (45, 35071), (Start: 48 @35083 has 1 MA's), (64, 35149), (66, 35158), (71, 35194), (87, 35260), (90, 35272), (92, 35299), (96, 35323), (100, 35338), (104, 35359), (107, 35380), (108, 35392), (109, 35395), (118, 35479), (125, 35524), (126, 35530), (133, 35560), (136, 35587), (137, 35605), (140, 35626), (148, 35659), (159, 35719), (163, 35746), (170, 35785), (173, 35803), (178, 35824), (181, 35833), (187, 35869), (190, 35878),

Gene: Rockne_45 Start: 34542, Stop: 35546, Start Num: 23

Candidate Starts for Rockne_45:

(Start: 23 @34542 has 70 MA's), (45, 34731), (Start: 48 @34743 has 1 MA's), (64, 34809), (66, 34818), (71, 34854), (87, 34920), (90, 34932), (92, 34959), (96, 34983), (100, 34998), (104, 35019), (107, 35040), (108, 35052), (109, 35055), (118, 35139), (125, 35184), (126, 35190), (133, 35220), (136, 35247), (137, 35265), (140, 35286), (148, 35319), (159, 35379), (170, 35445), (173, 35463), (178, 35484), (181, 35493), (187, 35529), (190, 35538),

Gene: RockyHorror_48 Start: 34943, Stop: 35947, Start Num: 23

Candidate Starts for RockyHorror_48:

(15, 34787), (Start: 23 @34943 has 70 MA's), (Start: 48 @35144 has 1 MA's), (64, 35210), (66, 35219), (71, 35255), (87, 35321), (90, 35333), (92, 35360), (96, 35384), (100, 35399), (104, 35420), (107, 35441), (108, 35453), (109, 35456), (118, 35540), (125, 35585), (126, 35591), (133, 35621), (136, 35648), (137, 35666), (140, 35687), (148, 35720), (159, 35780), (170, 35846), (173, 35864), (178, 35885), (181, 35894), (187, 35930), (190, 35939),

Gene: Ruby_46 Start: 35733, Stop: 36737, Start Num: 23

Candidate Starts for Ruby_46:

(Start: 23 @35733 has 70 MA's), (45, 35922), (Start: 48 @35934 has 1 MA's), (64, 36000), (66, 36009), (71, 36045), (87, 36111), (90, 36123), (92, 36150), (96, 36174), (100, 36189), (104, 36210), (107, 36231), (108, 36243), (109, 36246), (118, 36330), (125, 36375), (126, 36381), (133, 36411), (136, 36438), (137, 36456), (140, 36477), (148, 36510), (159, 36570), (163, 36597), (170, 36636), (173, 36654), (178, 36675), (181, 36684), (187, 36720), (190, 36729),

Gene: Samba_44 Start: 35414, Stop: 36175, Start Num: 53

Candidate Starts for Samba_44:

(27, 35228), (38, 35339), (Start: 53 @35414 has 17 MA's), (59, 35429), (69, 35492), (84, 35564), (92, 35609), (95, 35618), (96, 35633), (108, 35702), (122, 35798), (136, 35888), (168, 36080),

Gene: SassyB_43 Start: 34554, Stop: 35558, Start Num: 23

Candidate Starts for SassyB_43:

(Start: 23 @34554 has 70 MA's), (41, 34722), (45, 34743), (Start: 48 @34755 has 1 MA's), (55, 34788), (61, 34803), (64, 34821), (66, 34830), (71, 34866), (82, 34914), (87, 34932), (90, 34944), (92, 34971), (96, 34995), (98, 35007), (100, 35010), (104, 35031), (107, 35052), (108, 35064), (109, 35067), (116, 35139), (118, 35151), (125, 35196), (126, 35202), (133, 35232), (136, 35259), (137, 35277), (138, 35280), (140, 35298), (148, 35331), (150, 35349), (159, 35391), (170, 35457), (173, 35475), (178, 35496), (187, 35541),

Gene: Seagreen_48 Start: 35285, Stop: 36286, Start Num: 23

Candidate Starts for Seagreen_48:

(Start: 23 @35285 has 70 MA's), (41, 35453), (45, 35474), (Start: 48 @35486 has 1 MA's), (55, 35519), (64, 35552), (66, 35561), (71, 35597), (87, 35663), (92, 35702), (93, 35705), (98, 35738), (100, 35741), (104, 35762), (107, 35783), (108, 35795), (109, 35798), (118, 35879), (125, 35924), (126, 35930), (133, 35960), (136, 35987), (137, 36005), (138, 36008), (140, 36026), (148, 36059), (150, 36077), (159, 36119), (170, 36185), (173, 36203), (178, 36224), (187, 36269),

Gene: Shipwreck_36 Start: 29753, Stop: 30619, Start Num: 37

Candidate Starts for Shipwreck_36:

(Start: 37 @29753 has 49 MA's), (56, 29834), (63, 29858), (65, 29867), (69, 29894), (73, 29915), (95, 30023), (96, 30038), (111, 30149), (137, 30332), (148, 30386), (178, 30557), (188, 30605),

Gene: ShroomBoi_47 Start: 35208, Stop: 36212, Start Num: 23

Candidate Starts for ShroomBoi_47:

(Start: 23 @35208 has 70 MA's), (41, 35376), (45, 35397), (Start: 48 @35409 has 1 MA's), (55, 35442), (61, 35457), (64, 35475), (66, 35484), (71, 35520), (82, 35568), (87, 35586), (90, 35598), (92, 35625), (96, 35649), (98, 35661), (100, 35664), (104, 35685), (107, 35706), (108, 35718), (109, 35721), (118, 35805), (125, 35850), (126, 35856), (133, 35886), (136, 35913), (137, 35931), (140, 35952), (148, 35985), (159, 36045), (173, 36129), (178, 36150), (181, 36159), (187, 36195), (190, 36204),

Gene: SiSi_47 Start: 35103, Stop: 36107, Start Num: 23

Candidate Starts for SiSi_47:

(Start: 23 @35103 has 70 MA's), (45, 35292), (Start: 48 @35304 has 1 MA's), (64, 35370), (66, 35379), (71, 35415), (87, 35481), (90, 35493), (92, 35520), (96, 35544), (100, 35559), (104, 35580), (107, 35601), (108, 35613), (109, 35616), (118, 35700), (125, 35745), (126, 35751), (133, 35781), (136, 35808), (137, 35826), (140, 35847), (148, 35880), (159, 35940), (163, 35967), (170, 36006), (173, 36024), (178, 36045), (181, 36054), (187, 36090), (190, 36099),

Gene: SimranZ1_47 Start: 34553, Stop: 35554, Start Num: 23

Candidate Starts for SimranZ1_47:

(Start: 23 @34553 has 70 MA's), (45, 34742), (Start: 48 @34754 has 1 MA's), (64, 34820), (66, 34829), (71, 34865), (87, 34931), (90, 34943), (92, 34970), (96, 34994), (100, 35009), (104, 35030), (107, 35051), (108, 35063), (109, 35066), (118, 35147), (125, 35192), (126, 35198), (127, 35204), (133, 35228), (136, 35255), (140, 35294), (148, 35327), (150, 35345), (159, 35387), (163, 35414), (170, 35453), (173, 35471), (178, 35492), (181, 35501), (187, 35537), (190, 35546),

Gene: Slim_48 Start: 36252, Stop: 37256, Start Num: 23

Candidate Starts for Slim_48:

(Start: 23 @36252 has 70 MA's), (45, 36441), (Start: 48 @36453 has 1 MA's), (64, 36519), (66, 36528), (71, 36564), (87, 36630), (90, 36642), (92, 36669), (96, 36693), (100, 36708), (104, 36729), (107, 36750), (108, 36762), (109, 36765), (118, 36849), (125, 36894), (126, 36900), (133, 36930), (136, 36957), (137, 36975), (140, 36996), (148, 37029), (150, 37047), (159, 37089), (163, 37116), (170, 37155), (173, 37173), (178, 37194), (181, 37203), (187, 37239), (190, 37248),

Gene: Soilmate_51 Start: 38490, Stop: 39251, Start Num: 53

Candidate Starts for Soilmate_51:

(38, 38415), (Start: 53 @38490 has 17 MA's), (59, 38505), (66, 38541), (77, 38604), (80, 38616), (90, 38658), (92, 38685), (108, 38778), (122, 38874), (136, 38964), (168, 39156),

Gene: Sonah_34 Start: 27925, Stop: 28791, Start Num: 37

Candidate Starts for Sonah_34:

(Start: 37 @27925 has 49 MA's), (56, 28006), (63, 28030), (65, 28039), (69, 28066), (73, 28087), (95, 28195), (96, 28210), (111, 28321), (137, 28504), (148, 28558), (169, 28687), (178, 28729), (188, 28777),

Gene: Squirty_40 Start: 32337, Stop: 33116, Start Num: 47

Candidate Starts for Squirty_40:

(Start: 42 @32307 has 1 MA's), (Start: 47 @32337 has 12 MA's), (58, 32361), (59, 32364), (66, 32400), (Start: 67 @32403 has 1 MA's), (73, 32448), (95, 32556), (96, 32571), (108, 32640), (110, 32688), (134, 32805), (139, 32856), (154, 32952), (176, 33057), (177, 33063), (188, 33105), (190, 33111),

Gene: Stap_46 Start: 34844, Stop: 35848, Start Num: 23

Candidate Starts for Stap_46:

(Start: 23 @34844 has 70 MA's), (45, 35033), (Start: 48 @35045 has 1 MA's), (64, 35111), (66, 35120), (71, 35156), (87, 35222), (90, 35234), (92, 35261), (96, 35285), (100, 35300), (104, 35321), (107, 35342), (108, 35354), (109, 35357), (118, 35441), (125, 35486), (126, 35492), (133, 35522), (136, 35549), (137, 35567), (140, 35588), (148, 35621), (159, 35681), (163, 35708), (170, 35747), (173, 35765), (178, 35786), (181, 35795), (187, 35831), (190, 35840),

Gene: Starcevich_47 Start: 35737, Stop: 36741, Start Num: 23

Candidate Starts for Starcevich_47:

(Start: 23 @35737 has 70 MA's), (45, 35926), (Start: 48 @35938 has 1 MA's), (64, 36004), (66, 36013), (71, 36049), (87, 36115), (90, 36127), (92, 36154), (96, 36178), (100, 36193), (104, 36214), (107, 36235), (108, 36247), (109, 36250), (118, 36334), (125, 36379), (126, 36385), (133, 36415), (136, 36442), (137, 36460), (140, 36481), (148, 36514), (159, 36574), (163, 36601), (170, 36640), (173, 36658), (178, 36679), (181, 36688), (187, 36724), (190, 36733),

Gene: StevieRay_34 Start: 27895, Stop: 28758, Start Num: 37

Candidate Starts for StevieRay_34:

(Start: 37 @27895 has 49 MA's), (63, 28000), (65, 28009), (73, 28057), (81, 28081), (95, 28162), (96, 28177), (111, 28288), (137, 28471), (148, 28525), (169, 28654), (178, 28696), (188, 28744),

Gene: StressBall_34 Start: 28196, Stop: 29059, Start Num: 37

Candidate Starts for StressBall_34:

(Start: 37 @28196 has 49 MA's), (56, 28277), (63, 28301), (65, 28310), (73, 28358), (81, 28382), (95, 28463), (96, 28478), (111, 28589), (137, 28772), (148, 28826), (169, 28955), (178, 28997), (188, 29045),

Gene: SuperGrey_48 Start: 36177, Stop: 37181, Start Num: 23

Candidate Starts for SuperGrey_48:

(Start: 23 @36177 has 70 MA's), (41, 36345), (45, 36366), (Start: 48 @36378 has 1 MA's), (55, 36411), (61, 36426), (64, 36444), (66, 36453), (71, 36489), (82, 36537), (87, 36555), (90, 36567), (92, 36594), (96, 36618), (98, 36630), (100, 36633), (104, 36654), (107, 36675), (108, 36687), (109, 36690), (116, 36762), (118, 36774), (126, 36825), (127, 36831), (136, 36882), (137, 36900), (140, 36921), (148, 36954), (150, 36972), (159, 37014), (163, 37041), (173, 37098), (181, 37128), (187, 37164), (188, 37167),

Gene: Techage_34 Start: 27962, Stop: 28828, Start Num: 37

Candidate Starts for Techage_34:

(Start: 37 @27962 has 49 MA's), (56, 28043), (63, 28067), (65, 28076), (73, 28124), (95, 28232), (96, 28247), (97, 28256), (111, 28358), (137, 28541), (148, 28595), (169, 28724), (178, 28766), (188, 28814),

Gene: Thespis_34 Start: 27932, Stop: 28798, Start Num: 37

Candidate Starts for Thespis_34:

(Start: 37 @27932 has 49 MA's), (56, 28013), (63, 28037), (65, 28046), (69, 28073), (73, 28094), (95, 28202), (96, 28217), (111, 28328), (137, 28511), (148, 28565), (169, 28694), (178, 28736), (188, 28784),

Gene: Topiatin_52 Start: 36612, Stop: 37616, Start Num: 23

Candidate Starts for Topiatin_52:

(Start: 23 @36612 has 70 MA's), (45, 36801), (Start: 48 @36813 has 1 MA's), (64, 36879), (66, 36888), (71, 36924), (87, 36990), (90, 37002), (92, 37029), (96, 37053), (100, 37068), (104, 37089), (107, 37110), (108, 37122), (109, 37125), (118, 37209), (125, 37254), (126, 37260), (133, 37290), (136, 37317), (137, 37335), (140, 37356), (148, 37389), (159, 37449), (170, 37515), (173, 37533), (178, 37554), (181, 37563), (187, 37599), (190, 37608),

Gene: Totinger_47 Start: 34879, Stop: 35883, Start Num: 23

Candidate Starts for Totinger_47:

(Start: 23 @34879 has 70 MA's), (45, 35068), (Start: 48 @35080 has 1 MA's), (64, 35146), (66, 35155), (71, 35191), (87, 35257), (90, 35269), (92, 35296), (96, 35320), (100, 35335), (104, 35356), (107, 35377), (108, 35389), (109, 35392), (118, 35476), (125, 35521), (126, 35527), (133, 35557), (136, 35584), (137, 35602), (140, 35623), (148, 35656), (150, 35674), (159, 35716), (163, 35743), (170, 35782), (173, 35800), (178, 35821), (181, 35830), (187, 35866), (190, 35875),

Gene: Tweety_47 Start: 35615, Stop: 36619, Start Num: 23

Candidate Starts for Tweety_47:

(Start: 23 @35615 has 70 MA's), (45, 35804), (Start: 48 @35816 has 1 MA's), (64, 35882), (66, 35891), (71, 35927), (87, 35993), (90, 36005), (92, 36032), (96, 36056), (100, 36071), (104, 36092), (107, 36113), (108, 36125), (109, 36128), (118, 36212), (125, 36257), (126, 36263), (133, 36293), (136, 36320), (137, 36338), (140, 36359), (148, 36392), (159, 36452), (163, 36479), (170, 36518), (173, 36536), (178, 36557), (181, 36566), (187, 36602), (190, 36611),

Gene: Utz_39 Start: 34104, Stop: 34865, Start Num: 53

Candidate Starts for Utz_39:

(27, 33918), (38, 34029), (Start: 53 @34104 has 17 MA's), (59, 34119), (69, 34182), (84, 34254), (92, 34299), (95, 34308), (96, 34323), (108, 34392), (122, 34488), (136, 34578), (168, 34770),

Gene: Venti_34 Start: 27939, Stop: 28805, Start Num: 37

Candidate Starts for Venti_34:

(Start: 37 @27939 has 49 MA's), (56, 28020), (63, 28044), (65, 28053), (73, 28101), (95, 28209), (96, 28224), (111, 28335), (137, 28518), (148, 28572), (169, 28701), (178, 28743), (188, 28791),

Gene: Veteran_45 Start: 34747, Stop: 35751, Start Num: 23

Candidate Starts for Veteran_45:

(Start: 23 @34747 has 70 MA's), (45, 34936), (Start: 48 @34948 has 1 MA's), (64, 35014), (66, 35023), (71, 35059), (87, 35125), (90, 35137), (92, 35164), (96, 35188), (100, 35203), (104, 35224), (107, 35245), (108, 35257), (109, 35260), (118, 35344), (125, 35389), (126, 35395), (133, 35425), (136, 35452), (137, 35470), (140, 35491), (148, 35524), (159, 35584), (163, 35611), (170, 35650), (173, 35668), (178, 35689), (181, 35698), (187, 35734), (190, 35743),

Gene: Vidya_34 Start: 27972, Stop: 28838, Start Num: 37

Candidate Starts for Vidya_34:

(Start: 37 @27972 has 49 MA's), (56, 28053), (63, 28077), (65, 28086), (73, 28134), (95, 28242), (96, 28257), (111, 28368), (137, 28551), (148, 28605), (169, 28734), (178, 28776), (188, 28824),

Gene: Vivum_50 Start: 35865, Stop: 36869, Start Num: 23

Candidate Starts for Vivum_50:

(Start: 23 @35865 has 70 MA's), (45, 36054), (Start: 48 @36066 has 1 MA's), (64, 36132), (66, 36141), (71, 36177), (87, 36243), (90, 36255), (92, 36282), (96, 36306), (100, 36321), (104, 36342), (107, 36363), (108, 36375), (109, 36378), (118, 36462), (125, 36507), (126, 36513), (133, 36543), (136, 36570), (137, 36588), (140, 36609), (148, 36642), (159, 36702), (163, 36729), (170, 36768), (173, 36786), (178, 36807), (181, 36816), (187, 36852), (190, 36861),

Gene: Wee_50 Start: 36114, Stop: 37118, Start Num: 23

Candidate Starts for Wee_50:

(Start: 23 @36114 has 70 MA's), (45, 36303), (Start: 48 @36315 has 1 MA's), (64, 36381), (66, 36390), (71, 36426), (87, 36492), (90, 36504), (92, 36531), (96, 36555), (100, 36570), (104, 36591), (107, 36612), (108, 36624), (109, 36627), (118, 36711), (125, 36756), (126, 36762), (133, 36792), (136, 36819), (137, 36837), (140, 36858), (148, 36891), (159, 36951), (163, 36978), (170, 37017), (173, 37035), (178, 37056), (181, 37065), (187, 37101), (190, 37110),

Gene: Willsammy_33 Start: 27679, Stop: 28542, Start Num: 37

Candidate Starts for Willsammy_33:

(Start: 37 @27679 has 49 MA's), (56, 27760), (63, 27784), (65, 27793), (73, 27841), (81, 27865), (95, 27946), (96, 27961), (111, 28072), (137, 28255), (148, 28309), (169, 28438), (178, 28480), (188, 28528),

Gene: WinkNick_49 Start: 34309, Stop: 35058, Start Num: 50

Candidate Starts for WinkNick_49:

(3, 33670), (4, 33724), (5, 33757), (8, 33796), (9, 33817), (10, 33850), (11, 33862), (16, 33985), (17, 34006), (28, 34153), (Start: 50 @34309 has 11 MA's), (59, 34339), (64, 34366), (66, 34375), (90, 34492), (92, 34519), (96, 34543), (101, 34558), (105, 34588), (113, 34678), (114, 34681), (151, 34903),

Gene: Wisp_43 Start: 34155, Stop: 34916, Start Num: 53

Candidate Starts for Wisp_43:

(22, 33915), (27, 33969), (38, 34080), (Start: 53 @34155 has 17 MA's), (59, 34170), (77, 34269), (80, 34281), (90, 34323), (92, 34350), (108, 34443), (122, 34539), (136, 34629), (168, 34821), (180, 34866),

Gene: Wocket_45 Start: 33305, Stop: 34066, Start Num: 53

Candidate Starts for Wocket_45:

(25, 33104), (38, 33230), (Start: 53 @33305 has 17 MA's), (59, 33320), (77, 33419), (80, 33431), (90, 33473), (92, 33500), (107, 33581), (108, 33593), (122, 33689), (136, 33779), (146, 33845), (168, 33971), (180, 34016),

Gene: Wrigley_52 Start: 36935, Stop: 37699, Start Num: 50

Candidate Starts for Wrigley_52:

(Start: 50 @36935 has 11 MA's), (58, 36962), (59, 36965), (66, 37001), (77, 37064), (80, 37076), (89, 37118), (92, 37145), (108, 37238), (112, 37292), (134, 37406), (136, 37430), (137, 37448), (140, 37469), (141, 37472), (142, 37475), (149, 37499), (157, 37550), (158, 37553), (171, 37613),

Gene: Xula_31 Start: 27335, Stop: 28204, Start Num: 37

Candidate Starts for Xula_31:

(Start: 37 @27335 has 49 MA's), (63, 27443), (65, 27452), (73, 27500), (95, 27608), (96, 27623), (111, 27734), (137, 27917), (148, 27971), (169, 28100), (178, 28142), (188, 28190),

Gene: Yoshi_60 Start: 36844, Stop: 38034, Start Num: 23

Candidate Starts for Yoshi_60:

(Start: 23 @36844 has 70 MA's), (45, 37033), (Start: 48 @37045 has 1 MA's), (55, 37078), (61, 37093), (64, 37111), (66, 37120), (71, 37156), (82, 37204), (87, 37222), (90, 37234), (92, 37261), (96, 37285), (98, 37297), (100, 37300), (104, 37321), (107, 37342), (108, 37354), (109, 37357), (116, 37426), (118, 37438), (125, 37483), (126, 37489), (127, 37495), (133, 37519), (136, 37546), (137, 37564), (140, 37585), (148, 37618), (150, 37636), (159, 37678), (163, 37705), (170, 37744), (173, 37762), (178, 37783), (181, 37792), (185, 37819), (194, 37876), (195, 38017),

Gene: YungMoney_53 Start: 42952, Stop: 43722, Start Num: 49

Candidate Starts for YungMoney_53:

(Start: 49 @42952 has 1 MA's), (52, 42964), (59, 42976), (73, 43057), (91, 43147), (93, 43159), (96, 43180), (97, 43189), (108, 43249), (114, 43321), (123, 43342), (129, 43369), (145, 43465), (152, 43516), (158, 43537), (162, 43564), (164, 43579), (192, 43699),

Gene: Zerg_46 Start: 35052, Stop: 36056, Start Num: 23

Candidate Starts for Zerg_46:

(15, 34896), (Start: 23 @35052 has 70 MA's), (Start: 48 @35253 has 1 MA's), (64, 35319), (66, 35328), (71, 35364), (87, 35430), (90, 35442), (92, 35469), (96, 35493), (100, 35508), (104, 35529), (107, 35550), (108, 35562), (109, 35565), (118, 35649), (125, 35694), (126, 35700), (133, 35730), (136, 35757), (137, 35775), (140, 35796), (148, 35829), (159, 35889), (170, 35955), (173, 35973), (178, 35994), (181, 36003), (187, 36039), (190, 36048),

Gene: ZiggyZoo_46 Start: 35375, Stop: 36136, Start Num: 53

Candidate Starts for ZiggyZoo_46:

(18, 35090), (27, 35189), (Start: 53 @35375 has 17 MA's), (59, 35390), (77, 35489), (80, 35501), (90, 35543), (92, 35570), (108, 35663), (122, 35759), (136, 35849), (168, 36041),

Gene: Zilizabeth_34 Start: 27971, Stop: 28837, Start Num: 37

Candidate Starts for Zilizabeth_34:

(Start: 37 @27971 has 49 MA's), (56, 28052), (63, 28076), (65, 28085), (73, 28133), (95, 28241), (96, 28256), (111, 28367), (137, 28550), (148, 28604), (169, 28733), (178, 28775), (188, 28823),

Gene: Zizzle_51 Start: 36006, Stop: 36785, Start Num: 47

Candidate Starts for Zizzle_51:

(Start: 42 @35976 has 1 MA's), (Start: 47 @36006 has 12 MA's), (58, 36030), (59, 36033), (66, 36069),
(Start: 67 @36072 has 1 MA's), (73, 36117), (95, 36225), (96, 36240), (108, 36309), (110, 36357),
(134, 36474), (139, 36525), (154, 36621), (176, 36726), (177, 36732), (188, 36774), (190, 36780),