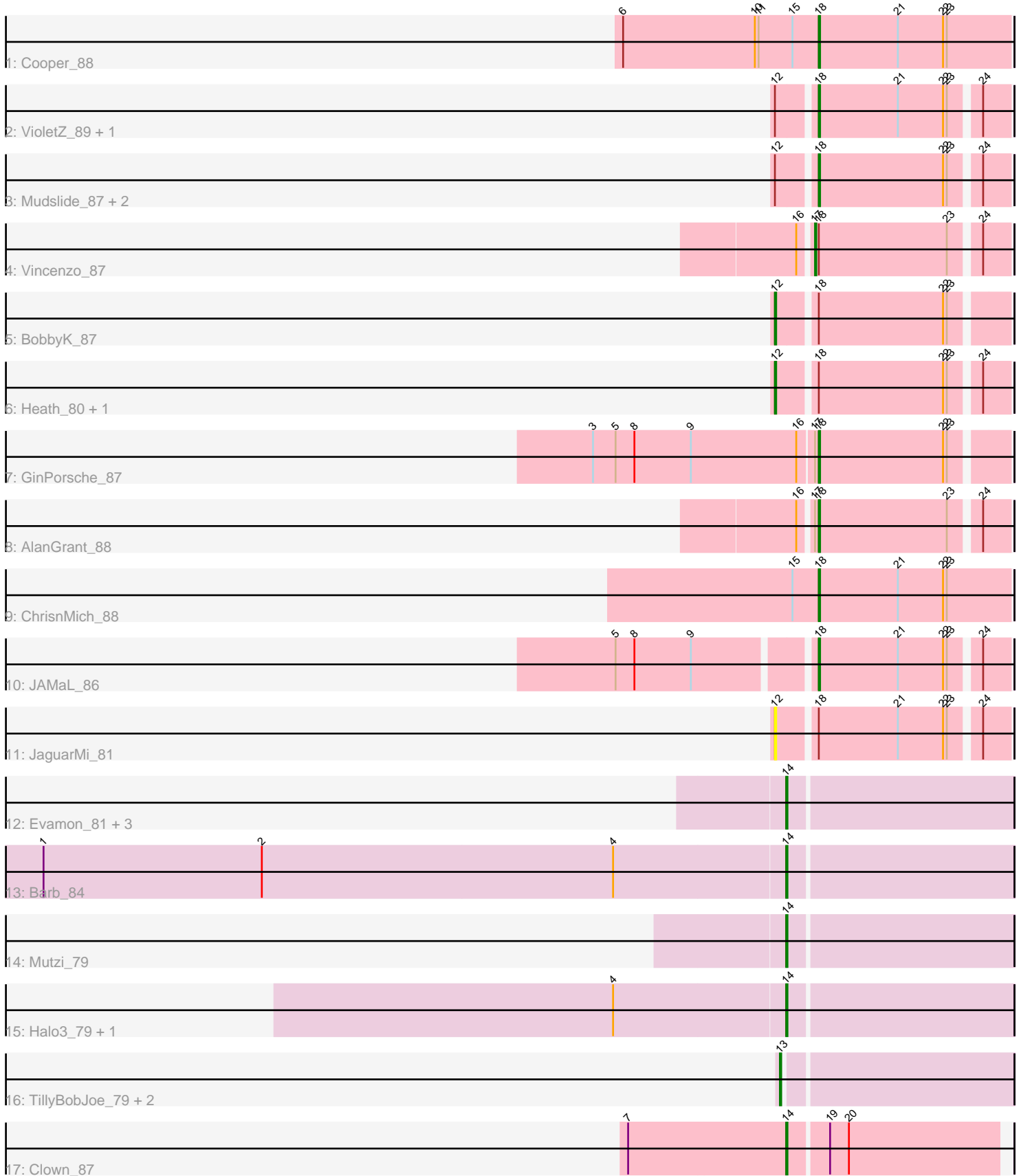


Pham 306759



Note: Tracks are now grouped by subcluster and scaled. Switching in subcluster is indicated by changes in track color. Track scale is now set by default to display the region 30 bp upstream of start 1 to 30 bp downstream of the last possible start. If this default region is judged to be packed too tightly with annotated starts, the track will be further scaled to only show that region of the ORF with annotated starts. This action will be indicated by adding "Zoomed" to the title. For starts, yellow indicates the location of called starts comprised solely of Glimmer/GeneMark auto-annotations, green indicates the location of called starts with at least 1 manual gene annotation.

## Pham 306759 Report

This analysis was run 06/20/26 on database version 651.

Pham number 306759 has 27 members, 1 are drafts.

Phages represented in each track:

- Track 1 : Cooper\_88
- Track 2 : VioletZ\_89, Prince\_86
- Track 3 : Mudslide\_87, Frederick\_88, Apex\_88
- Track 4 : Vincenzo\_87
- Track 5 : BobbyK\_87
- Track 6 : Heath\_80, Lolalove\_88
- Track 7 : GinPorsche\_87
- Track 8 : AlanGrant\_88
- Track 9 : ChrisnMich\_88
- Track 10 : JAMaL\_86
- Track 11 : JaguarMi\_81
- Track 12 : Evamon\_81, SmokingBunny\_82, Togo\_81, Salvador\_81
- Track 13 : Barb\_84
- Track 14 : Mutzi\_79
- Track 15 : Halo3\_79, CoveyB\_82
- Track 16 : TillyBobJoe\_79, Fireball\_84, Nubi\_83
- Track 17 : Clown\_87

### ***Summary of Final Annotations (See graph section above for start numbers):***

The start number called the most often in the published annotations is 18, it was called in 10 of the 26 non-draft genes in the pham.

Genes that call this "Most Annotated" start:

- AlanGrant\_88, Apex\_88, ChrisnMich\_88, Cooper\_88, Frederick\_88, GinPorsche\_87, JAMaL\_86, Mudslide\_87, Prince\_86, VioletZ\_89,

Genes that have the "Most Annotated" start but do not call it:

- BobbyK\_87, Heath\_80, JaguarMi\_81, Lolalove\_88, Vincenzo\_87,

Genes that do not have the "Most Annotated" start:

- Barb\_84, Clown\_87, CoveyB\_82, Evamon\_81, Fireball\_84, Halo3\_79, Mutzi\_79, Nubi\_83, Salvador\_81, SmokingBunny\_82, TillyBobJoe\_79, Togo\_81,

## Summary by start number:

### Start 12:

- Found in 9 of 27 ( 33.3% ) of genes in pham
- Manual Annotations of this start: 3 of 26
- Called 44.4% of time when present
- Phage (with cluster) where this start called: BobbyK\_87 (B4), Heath\_80 (B4), JaguarMi\_81 (B4), Lolalove\_88 (B4),

### Start 13:

- Found in 3 of 27 ( 11.1% ) of genes in pham
- Manual Annotations of this start: 3 of 26
- Called 100.0% of time when present
- Phage (with cluster) where this start called: Fireball\_84 (DC1), Nubi\_83 (DC1), TillyBobJoe\_79 (DC1),

### Start 14:

- Found in 9 of 27 ( 33.3% ) of genes in pham
- Manual Annotations of this start: 9 of 26
- Called 100.0% of time when present
- Phage (with cluster) where this start called: Barb\_84 (DC1), Clown\_87 (DC2), CoveyB\_82 (DC1), Evamon\_81 (DC1), Halo3\_79 (DC1), Mutzi\_79 (DC1), Salvador\_81 (DC1), SmokingBunny\_82 (DC1), Togo\_81 (DC1),

### Start 17:

- Found in 3 of 27 ( 11.1% ) of genes in pham
- Manual Annotations of this start: 1 of 26
- Called 33.3% of time when present
- Phage (with cluster) where this start called: Vincenzo\_87 (B4),

### Start 18:

- Found in 15 of 27 ( 55.6% ) of genes in pham
- Manual Annotations of this start: 10 of 26
- Called 66.7% of time when present
- Phage (with cluster) where this start called: AlanGrant\_88 (B4), Apex\_88 (B4), ChrisnMich\_88 (B4), Cooper\_88 (B4), Frederick\_88 (B4), GinPorsche\_87 (B4), JAMaL\_86 (B4), Mudslide\_87 (B4), Prince\_86 (B4), VioletZ\_89 (B4),

## Summary by clusters:

There are 3 clusters represented in this pham: B4, DC2, DC1,

### Info for manual annotations of cluster B4:

- Start number 12 was manually annotated 3 times for cluster B4.
- Start number 17 was manually annotated 1 time for cluster B4.
- Start number 18 was manually annotated 10 times for cluster B4.

### Info for manual annotations of cluster DC1:

- Start number 13 was manually annotated 3 times for cluster DC1.
- Start number 14 was manually annotated 8 times for cluster DC1.

### Info for manual annotations of cluster DC2:

- Start number 14 was manually annotated 1 time for cluster DC2.

**Gene Information:**

Gene: AlanGrant\_88 Start: 66948, Stop: 66805, Start Num: 18

Candidate Starts for AlanGrant\_88:

(16, 66960), (Start: 17 @66951 has 1 MA's), (Start: 18 @66948 has 10 MA's), (23, 66846), (24, 66825),

Gene: Apex\_88 Start: 66270, Stop: 66127, Start Num: 18

Candidate Starts for Apex\_88:

(Start: 12 @66297 has 3 MA's), (Start: 18 @66270 has 10 MA's), (22, 66171), (23, 66168), (24, 66147),

Gene: Barb\_84 Start: 53980, Stop: 54156, Start Num: 14

Candidate Starts for Barb\_84:

(1, 53392), (2, 53566), (4, 53845), (Start: 14 @53980 has 9 MA's),

Gene: BobbyK\_87 Start: 65805, Stop: 65635, Start Num: 12

Candidate Starts for BobbyK\_87:

(Start: 12 @65805 has 3 MA's), (Start: 18 @65778 has 10 MA's), (22, 65679), (23, 65676),

Gene: ChrisnMich\_88 Start: 65061, Stop: 64909, Start Num: 18

Candidate Starts for ChrisnMich\_88:

(15, 65082), (Start: 18 @65061 has 10 MA's), (21, 64998), (22, 64962), (23, 64959),

Gene: Clown\_87 Start: 55358, Stop: 55522, Start Num: 14

Candidate Starts for Clown\_87:

(7, 55235), (Start: 14 @55358 has 9 MA's), (19, 55388), (20, 55403),

Gene: Cooper\_88 Start: 65574, Stop: 65422, Start Num: 18

Candidate Starts for Cooper\_88:

(6, 65730), (10, 65625), (11, 65622), (15, 65595), (Start: 18 @65574 has 10 MA's), (21, 65511), (22, 65475), (23, 65472),

Gene: CoveyB\_82 Start: 53467, Stop: 53643, Start Num: 14

Candidate Starts for CoveyB\_82:

(4, 53332), (Start: 14 @53467 has 9 MA's),

Gene: Evamon\_81 Start: 53374, Stop: 53550, Start Num: 14

Candidate Starts for Evamon\_81:

(Start: 14 @53374 has 9 MA's),

Gene: Fireball\_84 Start: 53836, Stop: 54012, Start Num: 13

Candidate Starts for Fireball\_84:

(Start: 13 @53836 has 3 MA's),

Gene: Frederick\_88 Start: 66084, Stop: 65941, Start Num: 18

Candidate Starts for Frederick\_88:

(Start: 12 @66111 has 3 MA's), (Start: 18 @66084 has 10 MA's), (22, 65985), (23, 65982), (24, 65961),

Gene: GinPorsche\_87 Start: 65104, Stop: 64961, Start Num: 18

Candidate Starts for GinPorsche\_87:

(3, 65281), (5, 65263), (8, 65248), (9, 65203), (16, 65119), (Start: 17 @65107 has 1 MA's), (Start: 18 @65104 has 10 MA's), (22, 65005), (23, 65002),

Gene: Halo3\_79 Start: 53805, Stop: 53981, Start Num: 14

Candidate Starts for Halo3\_79:

(4, 53670), (Start: 14 @53805 has 9 MA's),

Gene: Heath\_80 Start: 64111, Stop: 63941, Start Num: 12

Candidate Starts for Heath\_80:

(Start: 12 @64111 has 3 MA's), (Start: 18 @64084 has 10 MA's), (22, 63985), (23, 63982), (24, 63961),

Gene: JAMaL\_86 Start: 65643, Stop: 65500, Start Num: 18

Candidate Starts for JAMaL\_86:

(5, 65790), (8, 65775), (9, 65730), (Start: 18 @65643 has 10 MA's), (21, 65580), (22, 65544), (23, 65541), (24, 65520),

Gene: JaguarMi\_81 Start: 66176, Stop: 66006, Start Num: 12

Candidate Starts for JaguarMi\_81:

(Start: 12 @66176 has 3 MA's), (Start: 18 @66149 has 10 MA's), (21, 66086), (22, 66050), (23, 66047), (24, 66026),

Gene: Lolalove\_88 Start: 66142, Stop: 65972, Start Num: 12

Candidate Starts for Lolalove\_88:

(Start: 12 @66142 has 3 MA's), (Start: 18 @66115 has 10 MA's), (22, 66016), (23, 66013), (24, 65992),

Gene: Mudslide\_87 Start: 66345, Stop: 66202, Start Num: 18

Candidate Starts for Mudslide\_87:

(Start: 12 @66372 has 3 MA's), (Start: 18 @66345 has 10 MA's), (22, 66246), (23, 66243), (24, 66222),

Gene: Mutzi\_79 Start: 53940, Stop: 54116, Start Num: 14

Candidate Starts for Mutzi\_79:

(Start: 14 @53940 has 9 MA's),

Gene: Nubi\_83 Start: 53251, Stop: 53427, Start Num: 13

Candidate Starts for Nubi\_83:

(Start: 13 @53251 has 3 MA's),

Gene: Prince\_86 Start: 66212, Stop: 66069, Start Num: 18

Candidate Starts for Prince\_86:

(Start: 12 @66239 has 3 MA's), (Start: 18 @66212 has 10 MA's), (21, 66149), (22, 66113), (23, 66110), (24, 66089),

Gene: Salvador\_81 Start: 53372, Stop: 53548, Start Num: 14

Candidate Starts for Salvador\_81:

(Start: 14 @53372 has 9 MA's),

Gene: SmokingBunny\_82 Start: 54368, Stop: 54544, Start Num: 14

Candidate Starts for SmokingBunny\_82:

(Start: 14 @54368 has 9 MA's),

Gene: TillyBobJoe\_79 Start: 53254, Stop: 53430, Start Num: 13

Candidate Starts for TillyBobJoe\_79:

(Start: 13 @53254 has 3 MA's),

Gene: Togo\_81 Start: 54368, Stop: 54544, Start Num: 14

Candidate Starts for Togo\_81:

(Start: 14 @54368 has 9 MA's),

Gene: Vincenzo\_87 Start: 66981, Stop: 66835, Start Num: 17

Candidate Starts for Vincenzo\_87:

(16, 66990), (Start: 17 @66981 has 1 MA's), (Start: 18 @66978 has 10 MA's), (23, 66876), (24, 66855),

Gene: VioletZ\_89 Start: 66302, Stop: 66159, Start Num: 18

Candidate Starts for VioletZ\_89:

(Start: 12 @66329 has 3 MA's), (Start: 18 @66302 has 10 MA's), (21, 66239), (22, 66203), (23, 66200),  
(24, 66179),