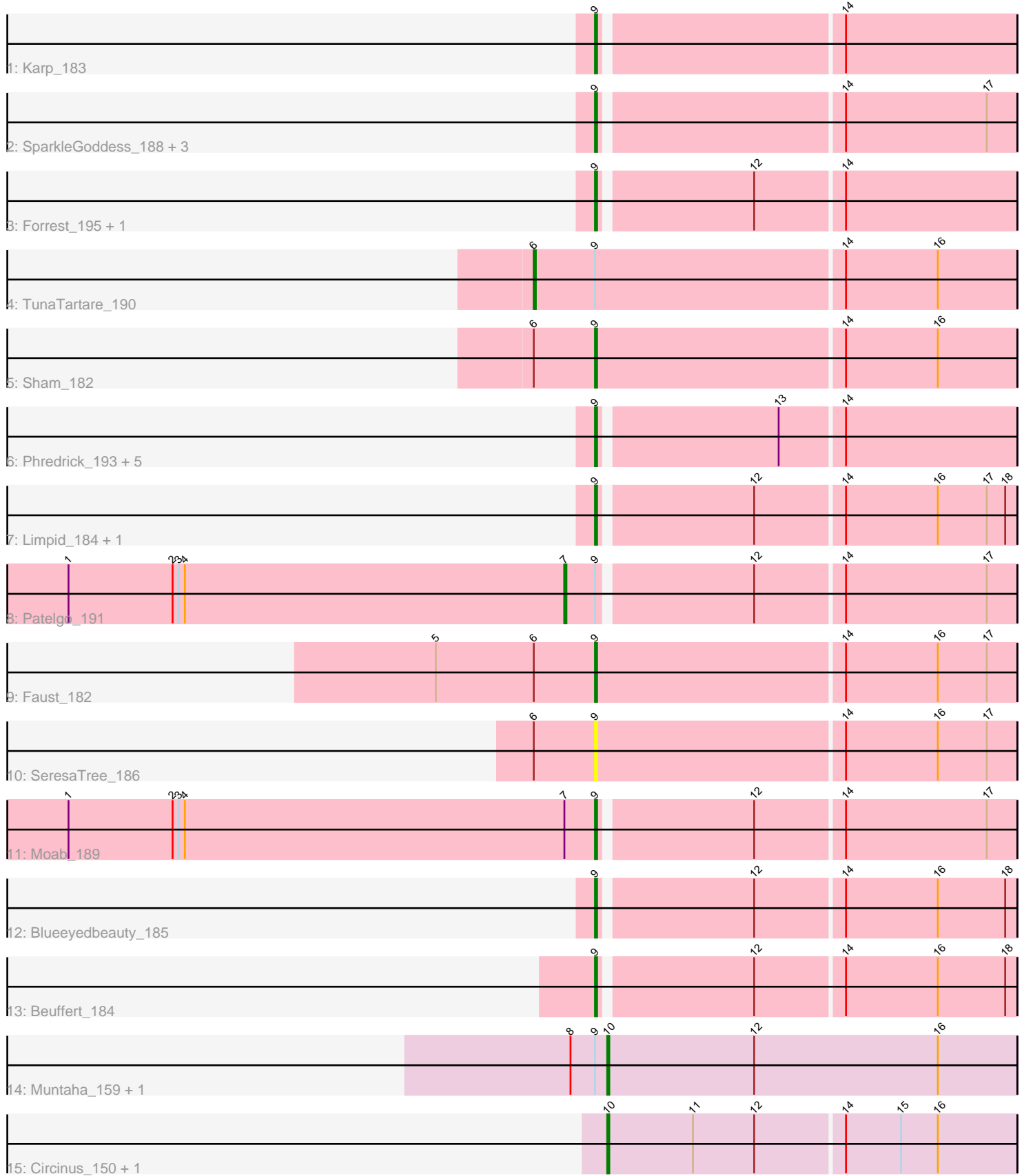


Pham 3240



Note: Tracks are now grouped by subcluster and scaled. Switching in subcluster is indicated by changes in track color. Track scale is now set by default to display the region 30 bp upstream of start 1 to 30 bp downstream of the last possible start. If this default region is judged to be packed too tightly with annotated starts, the track will be further scaled to only show that region of the ORF with annotated starts. This action will be indicated by adding "Zoomed" to the title. For starts, yellow indicates the location of called starts comprised solely of Glimmer/GeneMark auto-annotations, green indicates the location of called starts with at least 1 manual gene annotation.

Pham 3240 Report

This analysis was run 04/05/24 on database version 557.

Pham number 3240 has 27 members, 1 are drafts.

Phages represented in each track:

- Track 1 : Karp_183
- Track 2 : SparkleGoddess_188, Comrade_185, Stigma_186, Belfort_188
- Track 3 : Forrest_195, Francob_189
- Track 4 : TunaTartare_190
- Track 5 : Sham_182
- Track 6 : Phredrick_193, MeganTheeKilla_191, Gilson_191, Jada_193, Emma1919_192, Kenrey_195
- Track 7 : Limpid_184, Annadreamy_177
- Track 8 : Patelgo_191
- Track 9 : Faust_182
- Track 10 : SeresaTree_186
- Track 11 : Moab_189
- Track 12 : Blueeyedbeauty_185
- Track 13 : Beuffert_184
- Track 14 : Muntaha_159, Wakanda_157
- Track 15 : Circinus_150, BillNye_149

Summary of Final Annotations (See graph section above for start numbers):

The start number called the most often in the published annotations is 9, it was called in 20 of the 26 non-draft genes in the pham.

Genes that call this "Most Annotated" start:

- Annadreamy_177, Belfort_188, Beuffert_184, Blueeyedbeauty_185, Comrade_185, Emma1919_192, Faust_182, Forrest_195, Francob_189, Gilson_191, Jada_193, Karp_183, Kenrey_195, Limpid_184, MeganTheeKilla_191, Moab_189, Phredrick_193, SeresaTree_186, Sham_182, SparkleGoddess_188, Stigma_186,

Genes that have the "Most Annotated" start but do not call it:

- Muntaha_159, Patelgo_191, TunaTartare_190, Wakanda_157,

Genes that do not have the "Most Annotated" start:

- BillNye_149, Circinus_150,

Summary by start number:

Start 6:

- Found in 4 of 27 (14.8%) of genes in pham
- Manual Annotations of this start: 1 of 26
- Called 25.0% of time when present
- Phage (with cluster) where this start called: TunaTartare_190 (BK1),

Start 7:

- Found in 2 of 27 (7.4%) of genes in pham
- Manual Annotations of this start: 1 of 26
- Called 50.0% of time when present
- Phage (with cluster) where this start called: Patelgo_191 (BK1),

Start 9:

- Found in 25 of 27 (92.6%) of genes in pham
- Manual Annotations of this start: 20 of 26
- Called 84.0% of time when present
- Phage (with cluster) where this start called: Annadreamy_177 (BK1), Belfort_188 (BK1), Beuffert_184 (BK1), Blueeyedbeauty_185 (BK1), Comrade_185 (BK1), Emma1919_192 (BK1), Faust_182 (BK1), Forrest_195 (BK1), Francob_189 (BK1), Gilson_191 (BK1), Jada_193 (BK1), Karp_183 (BK1), Kenrey_195 (BK1), Limpid_184 (BK1), MeganTheeKilla_191 (BK1), Moab_189 (BK1), Phredrick_193 (BK1), SeresaTree_186 (BK1), Sham_182 (BK1), SparkleGoddess_188 (BK1), Stigma_186 (BK1),

Start 10:

- Found in 4 of 27 (14.8%) of genes in pham
- Manual Annotations of this start: 4 of 26
- Called 100.0% of time when present
- Phage (with cluster) where this start called: BillNye_149 (BK2), Circinus_150 (BK2), Muntaha_159 (BK2), Wakanda_157 (BK2),

Summary by clusters:

There are 2 clusters represented in this pham: BK1, BK2,

Info for manual annotations of cluster BK1:

- Start number 6 was manually annotated 1 time for cluster BK1.
- Start number 7 was manually annotated 1 time for cluster BK1.
- Start number 9 was manually annotated 20 times for cluster BK1.

Info for manual annotations of cluster BK2:

- Start number 10 was manually annotated 4 times for cluster BK2.

Gene Information:

Gene: Annadreamy_177 Start: 92409, Stop: 92606, Start Num: 9

Candidate Starts for Annadreamy_177:

(Start: 9 @92409 has 20 MA's), (12, 92481), (14, 92523), (16, 92568), (17, 92592), (18, 92601),

Gene: Belfort_188 Start: 98080, Stop: 98277, Start Num: 9

Candidate Starts for Belfort_188:

(Start: 9 @98080 has 20 MA's), (14, 98194), (17, 98263),

Gene: Beuffert_184 Start: 97174, Stop: 97371, Start Num: 9

Candidate Starts for Beuffert_184:

(Start: 9 @97174 has 20 MA's), (12, 97246), (14, 97288), (16, 97333), (18, 97366),

Gene: BillNye_149 Start: 87698, Stop: 87895, Start Num: 10

Candidate Starts for BillNye_149:

(Start: 10 @87698 has 4 MA's), (11, 87740), (12, 87770), (14, 87812), (15, 87839), (16, 87857),

Gene: Blueeyedbeauty_185 Start: 96166, Stop: 96363, Start Num: 9

Candidate Starts for Blueeyedbeauty_185:

(Start: 9 @96166 has 20 MA's), (12, 96238), (14, 96280), (16, 96325), (18, 96358),

Gene: Circinus_150 Start: 87664, Stop: 87861, Start Num: 10

Candidate Starts for Circinus_150:

(Start: 10 @87664 has 4 MA's), (11, 87706), (12, 87736), (14, 87778), (15, 87805), (16, 87823),

Gene: Comrade_185 Start: 98281, Stop: 98478, Start Num: 9

Candidate Starts for Comrade_185:

(Start: 9 @98281 has 20 MA's), (14, 98395), (17, 98464),

Gene: Emma1919_192 Start: 96920, Stop: 97117, Start Num: 9

Candidate Starts for Emma1919_192:

(Start: 9 @96920 has 20 MA's), (13, 97004), (14, 97034),

Gene: Faust_182 Start: 97718, Stop: 97921, Start Num: 9

Candidate Starts for Faust_182:

(5, 97640), (Start: 6 @97688 has 1 MA's), (Start: 9 @97718 has 20 MA's), (14, 97838), (16, 97883), (17, 97907),

Gene: Forrest_195 Start: 98817, Stop: 99014, Start Num: 9

Candidate Starts for Forrest_195:

(Start: 9 @98817 has 20 MA's), (12, 98889), (14, 98931),

Gene: Francob_189 Start: 97014, Stop: 97211, Start Num: 9

Candidate Starts for Francob_189:

(Start: 9 @97014 has 20 MA's), (12, 97086), (14, 97128),

Gene: Gilson_191 Start: 96882, Stop: 97079, Start Num: 9

Candidate Starts for Gilson_191:

(Start: 9 @96882 has 20 MA's), (13, 96966), (14, 96996),

Gene: Jada_193 Start: 97688, Stop: 97885, Start Num: 9

Candidate Starts for Jada_193:

(Start: 9 @97688 has 20 MA's), (13, 97772), (14, 97802),

Gene: Karp_183 Start: 97956, Stop: 98153, Start Num: 9

Candidate Starts for Karp_183:

(Start: 9 @97956 has 20 MA's), (14, 98070),

Gene: Kenrey_195 Start: 98106, Stop: 98303, Start Num: 9

Candidate Starts for Kenrey_195:

(Start: 9 @98106 has 20 MA's), (13, 98190), (14, 98220),

Gene: Limpid_184 Start: 97722, Stop: 97919, Start Num: 9

Candidate Starts for Limpid_184:

(Start: 9 @97722 has 20 MA's), (12, 97794), (14, 97836), (16, 97881), (17, 97905), (18, 97914),

Gene: MeganTheeKilla_191 Start: 96954, Stop: 97151, Start Num: 9

Candidate Starts for MeganTheeKilla_191:

(Start: 9 @96954 has 20 MA's), (13, 97038), (14, 97068),

Gene: Moab_189 Start: 99546, Stop: 99743, Start Num: 9

Candidate Starts for Moab_189:

(1, 99288), (2, 99339), (3, 99342), (4, 99345), (Start: 7 @99531 has 1 MA's), (Start: 9 @99546 has 20 MA's), (12, 99618), (14, 99660), (17, 99729),

Gene: Muntaha_159 Start: 86983, Stop: 87183, Start Num: 10

Candidate Starts for Muntaha_159:

(8, 86965), (Start: 9 @86977 has 20 MA's), (Start: 10 @86983 has 4 MA's), (12, 87055), (16, 87145),

Gene: Patelgo_191 Start: 100172, Stop: 100384, Start Num: 7

Candidate Starts for Patelgo_191:

(1, 99929), (2, 99980), (3, 99983), (4, 99986), (Start: 7 @100172 has 1 MA's), (Start: 9 @100187 has 20 MA's), (12, 100259), (14, 100301), (17, 100370),

Gene: Phredrick_193 Start: 96738, Stop: 96935, Start Num: 9

Candidate Starts for Phredrick_193:

(Start: 9 @96738 has 20 MA's), (13, 96822), (14, 96852),

Gene: SeresaTree_186 Start: 97703, Stop: 97906, Start Num: 9

Candidate Starts for SeresaTree_186:

(Start: 6 @97673 has 1 MA's), (Start: 9 @97703 has 20 MA's), (14, 97823), (16, 97868), (17, 97892),

Gene: Sham_182 Start: 99062, Stop: 99265, Start Num: 9

Candidate Starts for Sham_182:

(Start: 6 @99032 has 1 MA's), (Start: 9 @99062 has 20 MA's), (14, 99182), (16, 99227),

Gene: SparkleGoddess_188 Start: 98489, Stop: 98686, Start Num: 9

Candidate Starts for SparkleGoddess_188:

(Start: 9 @98489 has 20 MA's), (14, 98603), (17, 98672),

Gene: Stigma_186 Start: 98727, Stop: 98924, Start Num: 9

Candidate Starts for Stigma_186:

(Start: 9 @98727 has 20 MA's), (14, 98841), (17, 98910),

Gene: TunaTartare_190 Start: 101081, Stop: 101314, Start Num: 6

Candidate Starts for TunaTartare_190:

(Start: 6 @101081 has 1 MA's), (Start: 9 @101111 has 20 MA's), (14, 101231), (16, 101276),

Gene: Wakanda_157 Start: 86661, Stop: 86861, Start Num: 10

Candidate Starts for Wakanda_157:

(8, 86643), (Start: 9 @86655 has 20 MA's), (Start: 10 @86661 has 4 MA's), (12, 86733), (16, 86823),

