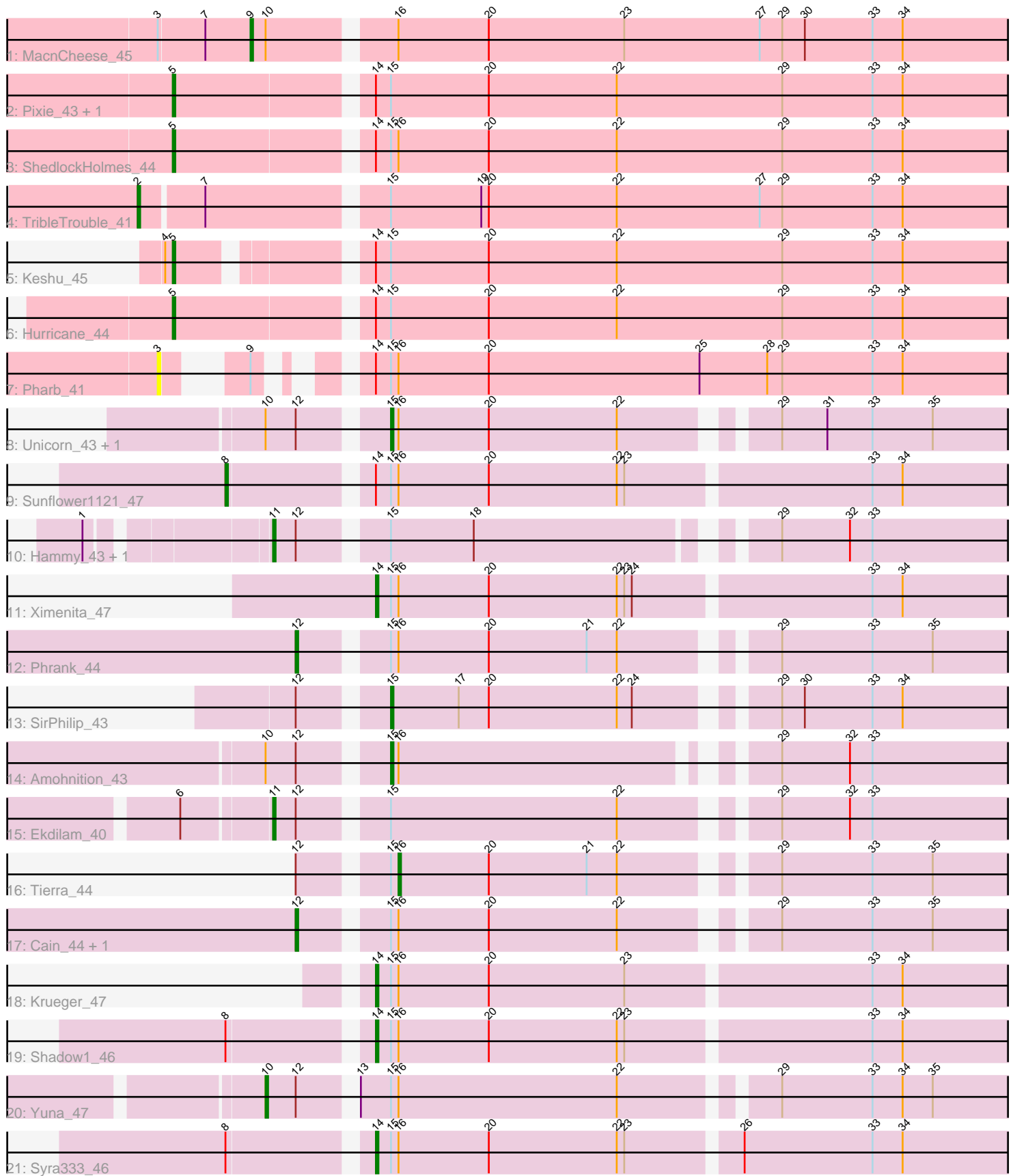


Pham 3635



Note: Tracks are now grouped by subcluster and scaled. Switching in subcluster is indicated by changes in track color. Track scale is now set by default to display the region 30 bp upstream of start 1 to 30 bp downstream of the last possible start. If this default region is judged to be packed too tightly with annotated starts, the track will be further scaled to only show that region of the ORF with annotated starts. This action will be indicated by adding "Zoomed" to the title. For starts, yellow indicates the location of called starts comprised solely of Glimmer/GeneMark auto-annotations, green indicates the location of called starts with at least 1 manual gene annotation.

Pham 3635 Report

This analysis was run 03/30/24 on database version 556.

Pham number 3635 has 25 members, 1 are drafts.

Phages represented in each track:

- Track 1 : MacnCheese_45
- Track 2 : Pixie_43, TBond007_43
- Track 3 : ShedlockHolmes_44
- Track 4 : TribbleTrouble_41
- Track 5 : Keshu_45
- Track 6 : Hurricane_44
- Track 7 : Pharb_41
- Track 8 : Unicorn_43, PhelpsODU_43
- Track 9 : Sunflower1121_47
- Track 10 : Hammy_43, DarthP_43
- Track 11 : Ximenita_47
- Track 12 : Phrank_44
- Track 13 : SirPhilip_43
- Track 14 : Amohnition_43
- Track 15 : Ekdilam_40
- Track 16 : Tierra_44
- Track 17 : Cain_44, Bryler_44
- Track 18 : Krueger_47
- Track 19 : Shadow1_46
- Track 20 : Yuna_47
- Track 21 : Syra333_46

Summary of Final Annotations (See graph section above for start numbers):

The start number called the most often in the published annotations is 5, it was called in 5 of the 24 non-draft genes in the pham.

Genes that call this "Most Annotated" start:

- Hurricane_44, Keshu_45, Pixie_43, ShedlockHolmes_44, TBond007_43,

Genes that have the "Most Annotated" start but do not call it:

-

Genes that do not have the "Most Annotated" start:

- Amohnition_43, Bryler_44, Cain_44, DarthP_43, Ekdilam_40, Hammy_43, Krueger_47, MacnCheese_45, Pharb_41, PhelpsODU_43, Phrank_44, Shadow1_46, SirPhilip_43, Sunflower1121_47, Syra333_46, Tierra_44, TribbleTrouble_41, Unicorn_43, Ximenita_47, Yuna_47,

Summary by start number:

Start 2:

- Found in 1 of 25 (4.0%) of genes in pham
- Manual Annotations of this start: 1 of 24
- Called 100.0% of time when present
- Phage (with cluster) where this start called: TribbleTrouble_41 (K3),

Start 3:

- Found in 2 of 25 (8.0%) of genes in pham
- No Manual Annotations of this start.
- Called 50.0% of time when present
- Phage (with cluster) where this start called: Pharb_41 (K3),

Start 5:

- Found in 5 of 25 (20.0%) of genes in pham
- Manual Annotations of this start: 5 of 24
- Called 100.0% of time when present
- Phage (with cluster) where this start called: Hurricane_44 (K3), Keshu_45 (K3), Pixie_43 (K3), ShedlockHolmes_44 (K3), TBond007_43 (K3),

Start 8:

- Found in 3 of 25 (12.0%) of genes in pham
- Manual Annotations of this start: 1 of 24
- Called 33.3% of time when present
- Phage (with cluster) where this start called: Sunflower1121_47 (K6),

Start 9:

- Found in 2 of 25 (8.0%) of genes in pham
- Manual Annotations of this start: 1 of 24
- Called 50.0% of time when present
- Phage (with cluster) where this start called: MacnCheese_45 (K3),

Start 10:

- Found in 5 of 25 (20.0%) of genes in pham
- Manual Annotations of this start: 1 of 24
- Called 20.0% of time when present
- Phage (with cluster) where this start called: Yuna_47 (K6),

Start 11:

- Found in 3 of 25 (12.0%) of genes in pham
- Manual Annotations of this start: 3 of 24
- Called 100.0% of time when present
- Phage (with cluster) where this start called: DarthP_43 (K6), Ekdilam_40 (K6), Hammy_43 (K6),

Start 12:

- Found in 12 of 25 (48.0%) of genes in pham

- Manual Annotations of this start: 3 of 24
- Called 25.0% of time when present
- Phage (with cluster) where this start called: Bryler_44 (K6), Cain_44 (K6), Phrank_44 (K6),

Start 14:

- Found in 11 of 25 (44.0%) of genes in pham
- Manual Annotations of this start: 4 of 24
- Called 36.4% of time when present
- Phage (with cluster) where this start called: Krueger_47 (K6), Shadow1_46 (K6), Syra333_46 (K6), Ximenita_47 (K6),

Start 15:

- Found in 24 of 25 (96.0%) of genes in pham
- Manual Annotations of this start: 4 of 24
- Called 16.7% of time when present
- Phage (with cluster) where this start called: Amohnition_43 (K6), PhelpsODU_43 (K6), SirPhilip_43 (K6), Unicorn_43 (K6),

Start 16:

- Found in 16 of 25 (64.0%) of genes in pham
- Manual Annotations of this start: 1 of 24
- Called 6.2% of time when present
- Phage (with cluster) where this start called: Tierra_44 (K6),

Summary by clusters:

There are 2 clusters represented in this pham: K3, K6,

Info for manual annotations of cluster K3:

- Start number 2 was manually annotated 1 time for cluster K3.
- Start number 5 was manually annotated 5 times for cluster K3.
- Start number 9 was manually annotated 1 time for cluster K3.

Info for manual annotations of cluster K6:

- Start number 8 was manually annotated 1 time for cluster K6.
- Start number 10 was manually annotated 1 time for cluster K6.
- Start number 11 was manually annotated 3 times for cluster K6.
- Start number 12 was manually annotated 3 times for cluster K6.
- Start number 14 was manually annotated 4 times for cluster K6.
- Start number 15 was manually annotated 4 times for cluster K6.
- Start number 16 was manually annotated 1 time for cluster K6.

Gene Information:

Gene: Amohnition_43 Start: 34438, Stop: 34680, Start Num: 15

Candidate Starts for Amohnition_43:

(Start: 10 @34396 has 1 MA's), (Start: 12 @34408 has 3 MA's), (Start: 15 @34438 has 4 MA's), (Start: 16 @34441 has 1 MA's), (29, 34573), (32, 34600), (33, 34609),

Gene: Bryler_44 Start: 33190, Stop: 33471, Start Num: 12

Candidate Starts for Bryler_44:

(Start: 12 @33190 has 3 MA's), (Start: 15 @33220 has 4 MA's), (Start: 16 @33223 has 1 MA's), (20, 33259), (22, 33310), (29, 33361), (33, 33397), (35, 33421),

Gene: Cain_44 Start: 33178, Stop: 33459, Start Num: 12

Candidate Starts for Cain_44:

(Start: 12 @33178 has 3 MA's), (Start: 15 @33208 has 4 MA's), (Start: 16 @33211 has 1 MA's), (20, 33247), (22, 33298), (29, 33349), (33, 33385), (35, 33409),

Gene: DarthP_43 Start: 34288, Stop: 34569, Start Num: 11

Candidate Starts for DarthP_43:

(1, 34225), (Start: 11 @34288 has 3 MA's), (Start: 12 @34297 has 3 MA's), (Start: 15 @34327 has 4 MA's), (18, 34360), (29, 34465), (32, 34492), (33, 34501),

Gene: Ekdilam_40 Start: 33846, Stop: 34130, Start Num: 11

Candidate Starts for Ekdilam_40:

(6, 33813), (Start: 11 @33846 has 3 MA's), (Start: 12 @33855 has 3 MA's), (Start: 15 @33885 has 4 MA's), (22, 33975), (29, 34026), (32, 34053), (33, 34062),

Gene: Hammy_43 Start: 34276, Stop: 34557, Start Num: 11

Candidate Starts for Hammy_43:

(1, 34213), (Start: 11 @34276 has 3 MA's), (Start: 12 @34285 has 3 MA's), (Start: 15 @34315 has 4 MA's), (18, 34348), (29, 34453), (32, 34480), (33, 34489),

Gene: Hurricane_44 Start: 33862, Stop: 34206, Start Num: 5

Candidate Starts for Hurricane_44:

(Start: 5 @33862 has 5 MA's), (Start: 14 @33934 has 4 MA's), (Start: 15 @33940 has 4 MA's), (20, 33979), (22, 34030), (29, 34096), (33, 34132), (34, 34144),

Gene: Keshu_45 Start: 33926, Stop: 34261, Start Num: 5

Candidate Starts for Keshu_45:

(4, 33923), (Start: 5 @33926 has 5 MA's), (Start: 14 @33989 has 4 MA's), (Start: 15 @33995 has 4 MA's), (20, 34034), (22, 34085), (29, 34151), (33, 34187), (34, 34199),

Gene: Krueger_47 Start: 34236, Stop: 34514, Start Num: 14

Candidate Starts for Krueger_47:

(Start: 14 @34236 has 4 MA's), (Start: 15 @34242 has 4 MA's), (Start: 16 @34245 has 1 MA's), (20, 34281), (23, 34335), (33, 34428), (34, 34440),

Gene: MacnCheese_45 Start: 34843, Stop: 35163, Start Num: 9

Candidate Starts for MacnCheese_45:

(3, 34807), (7, 34825), (Start: 9 @34843 has 1 MA's), (Start: 10 @34849 has 1 MA's), (Start: 16 @34894 has 1 MA's), (20, 34930), (23, 34984), (27, 35038), (29, 35047), (30, 35056), (33, 35083), (34, 35095),

Gene: Pharb_41 Start: 32676, Stop: 32993, Start Num: 3

Candidate Starts for Pharb_41:

(3, 32676), (Start: 9 @32694 has 1 MA's), (Start: 14 @32718 has 4 MA's), (Start: 15 @32724 has 4 MA's), (Start: 16 @32727 has 1 MA's), (20, 32763), (25, 32847), (28, 32874), (29, 32880), (33, 32916), (34, 32928),

Gene: PhelpsODU_43 Start: 33237, Stop: 33485, Start Num: 15

Candidate Starts for PhelpsODU_43:

(Start: 10 @33195 has 1 MA's), (Start: 12 @33207 has 3 MA's), (Start: 15 @33237 has 4 MA's), (Start: 16 @33240 has 1 MA's), (20, 33276), (22, 33327), (29, 33378), (31, 33396), (33, 33414), (35, 33438),

Gene: Phrank_44 Start: 33167, Stop: 33448, Start Num: 12

Candidate Starts for Phrank_44:

(Start: 12 @33167 has 3 MA's), (Start: 15 @33197 has 4 MA's), (Start: 16 @33200 has 1 MA's), (20, 33236), (21, 33275), (22, 33287), (29, 33338), (33, 33374), (35, 33398),

Gene: Pixie_43 Start: 33361, Stop: 33705, Start Num: 5

Candidate Starts for Pixie_43:

(Start: 5 @33361 has 5 MA's), (Start: 14 @33433 has 4 MA's), (Start: 15 @33439 has 4 MA's), (20, 33478), (22, 33529), (29, 33595), (33, 33631), (34, 33643),

Gene: Shadow1_46 Start: 34298, Stop: 34564, Start Num: 14

Candidate Starts for Shadow1_46:

(Start: 8 @34247 has 1 MA's), (Start: 14 @34298 has 4 MA's), (Start: 15 @34304 has 4 MA's), (Start: 16 @34307 has 1 MA's), (20, 34343), (22, 34394), (23, 34397), (33, 34490), (34, 34502),

Gene: ShedlockHolmes_44 Start: 33895, Stop: 34239, Start Num: 5

Candidate Starts for ShedlockHolmes_44:

(Start: 5 @33895 has 5 MA's), (Start: 14 @33967 has 4 MA's), (Start: 15 @33973 has 4 MA's), (Start: 16 @33976 has 1 MA's), (20, 34012), (22, 34063), (29, 34129), (33, 34165), (34, 34177),

Gene: SirPhilip_43 Start: 34541, Stop: 34792, Start Num: 15

Candidate Starts for SirPhilip_43:

(Start: 12 @34511 has 3 MA's), (Start: 15 @34541 has 4 MA's), (17, 34568), (20, 34580), (22, 34631), (24, 34637), (29, 34682), (30, 34691), (33, 34718), (34, 34730),

Gene: Sunflower1121_47 Start: 34342, Stop: 34659, Start Num: 8

Candidate Starts for Sunflower1121_47:

(Start: 8 @34342 has 1 MA's), (Start: 14 @34393 has 4 MA's), (Start: 15 @34399 has 4 MA's), (Start: 16 @34402 has 1 MA's), (20, 34438), (22, 34489), (23, 34492), (33, 34585), (34, 34597),

Gene: Syra333_46 Start: 34054, Stop: 34320, Start Num: 14

Candidate Starts for Syra333_46:

(Start: 8 @34003 has 1 MA's), (Start: 14 @34054 has 4 MA's), (Start: 15 @34060 has 4 MA's), (Start: 16 @34063 has 1 MA's), (20, 34099), (22, 34150), (23, 34153), (26, 34195), (33, 34246), (34, 34258),

Gene: TBond007_43 Start: 33360, Stop: 33704, Start Num: 5

Candidate Starts for TBond007_43:

(Start: 5 @33360 has 5 MA's), (Start: 14 @33432 has 4 MA's), (Start: 15 @33438 has 4 MA's), (20, 33477), (22, 33528), (29, 33594), (33, 33630), (34, 33642),

Gene: Tierra_44 Start: 34014, Stop: 34262, Start Num: 16

Candidate Starts for Tierra_44:

(Start: 12 @33981 has 3 MA's), (Start: 15 @34011 has 4 MA's), (Start: 16 @34014 has 1 MA's), (20, 34050), (21, 34089), (22, 34101), (29, 34152), (33, 34188), (35, 34212),

Gene: TribelTrouble_41 Start: 33264, Stop: 33617, Start Num: 2

Candidate Starts for TribelTrouble_41:

(Start: 2 @33264 has 1 MA's), (7, 33288), (Start: 15 @33354 has 4 MA's), (19, 33390), (20, 33393), (22, 33444), (27, 33501), (29, 33510), (33, 33546), (34, 33558),

Gene: Unicorn_43 Start: 33237, Stop: 33485, Start Num: 15

Candidate Starts for Unicorn_43:

(Start: 10 @33195 has 1 MA's), (Start: 12 @33207 has 3 MA's), (Start: 15 @33237 has 4 MA's), (Start: 16 @33240 has 1 MA's), (20, 33276), (22, 33327), (29, 33378), (31, 33396), (33, 33414), (35, 33438),

Gene: Ximenita_47 Start: 34248, Stop: 34517, Start Num: 14

Candidate Starts for Ximenita_47:

(Start: 14 @34248 has 4 MA's), (Start: 15 @34254 has 4 MA's), (Start: 16 @34257 has 1 MA's), (20, 34293), (22, 34344), (23, 34347), (24, 34350), (33, 34440), (34, 34452),

Gene: Yuna_47 Start: 35062, Stop: 35355, Start Num: 10

Candidate Starts for Yuna_47:

(Start: 10 @35062 has 1 MA's), (Start: 12 @35074 has 3 MA's), (13, 35092), (Start: 15 @35104 has 4 MA's), (Start: 16 @35107 has 1 MA's), (22, 35194), (29, 35248), (33, 35284), (34, 35296), (35, 35308),