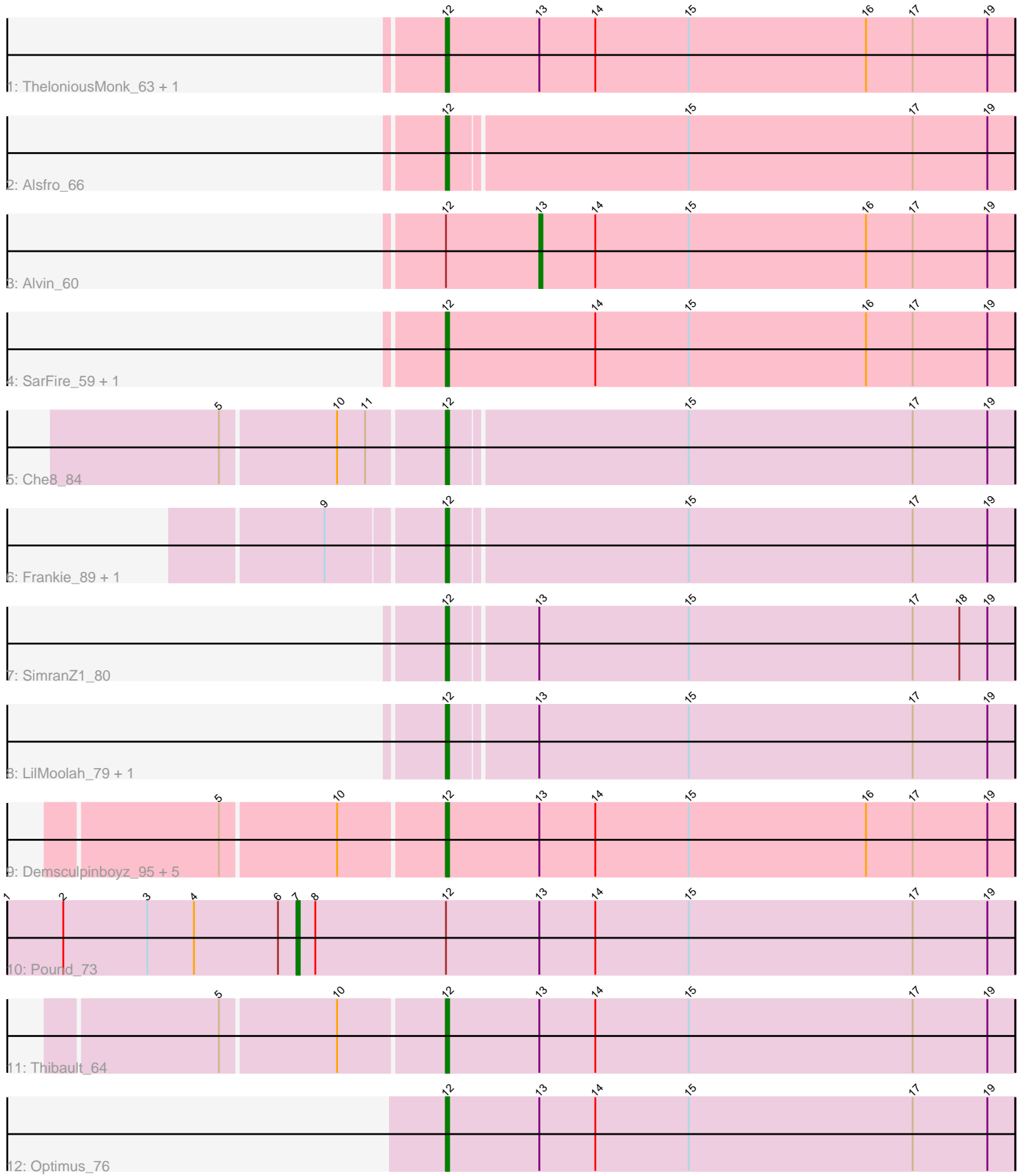


# Pham 3712



Note: Tracks are now grouped by subcluster and scaled. Switching in subcluster is indicated by changes in track color. Track scale is now set by default to display the region 30 bp upstream of start 1 to 30 bp downstream of the last possible start. If this default region is judged to be packed too tightly with annotated starts, the track will be further scaled to only show that region of the ORF with annotated starts. This action will be indicated by adding "Zoomed" to the title. For starts, yellow indicates the location of called starts comprised solely of Glimmer/GeneMark auto-annotations, green indicates the location of called starts with at least 1 manual gene annotation.

## Pham 3712 Report

This analysis was run 04/05/24 on database version 557.

Pham number 3712 has 21 members, 0 are drafts.

Phages represented in each track:

- Track 1 : TheloniousMonk\_63, Blue\_59
- Track 2 : Alsfro\_66
- Track 3 : Alvin\_60
- Track 4 : SarFire\_59, Thor\_59
- Track 5 : Che8\_84
- Track 6 : Frankie\_89, Harley\_90
- Track 7 : SimranZ1\_80
- Track 8 : LilMoolah\_79, Nivrat\_77
- Track 9 : Demsculpinboyz\_95, Moonbeam\_88, Sabbb\_89, Pollywog\_87, Rialto\_91, EricMillard\_71
- Track 10 : Pound\_73
- Track 11 : Thibault\_64
- Track 12 : Optimus\_76

### ***Summary of Final Annotations (See graph section above for start numbers):***

The start number called the most often in the published annotations is 12, it was called in 19 of the 21 non-draft genes in the pham.

Genes that call this "Most Annotated" start:

- Alsfro\_66, Blue\_59, Che8\_84, Demsculpinboyz\_95, EricMillard\_71, Frankie\_89, Harley\_90, LilMoolah\_79, Moonbeam\_88, Nivrat\_77, Optimus\_76, Pollywog\_87, Rialto\_91, Sabbb\_89, SarFire\_59, SimranZ1\_80, TheloniousMonk\_63, Thibault\_64, Thor\_59,

Genes that have the "Most Annotated" start but do not call it:

- Alvin\_60, Pound\_73,

Genes that do not have the "Most Annotated" start:

- 

### **Summary by start number:**

Start 7:

- Found in 1 of 21 ( 4.8% ) of genes in pham
- Manual Annotations of this start: 1 of 21
- Called 100.0% of time when present
- Phage (with cluster) where this start called: Pound\_73 (J),

Start 12:

- Found in 21 of 21 ( 100.0% ) of genes in pham
- Manual Annotations of this start: 19 of 21
- Called 90.5% of time when present
- Phage (with cluster) where this start called: Alsfro\_66 (A1), Blue\_59 (A1), Che8\_84 (F1), Demsculpinboyz\_95 (F2), EricMillard\_71 (J), Frankie\_89 (F1), Harley\_90 (F1), LilMoolah\_79 (F1), Moonbeam\_88 (F1), Nivrat\_77 (F1), Optimus\_76 (J), Pollywog\_87 (F1), Rialto\_91 (F1), Sabbb\_89 (F1), SarFire\_59 (A1), SimranZ1\_80 (F1), TheloniousMonk\_63 (A1), Thibault\_64 (J), Thor\_59 (A1),

Start 13:

- Found in 15 of 21 ( 71.4% ) of genes in pham
- Manual Annotations of this start: 1 of 21
- Called 6.7% of time when present
- Phage (with cluster) where this start called: Alvin\_60 (A1),

### **Summary by clusters:**

There are 4 clusters represented in this pham: A1, F1, F2, J,

Info for manual annotations of cluster A1:

- Start number 12 was manually annotated 5 times for cluster A1.
- Start number 13 was manually annotated 1 time for cluster A1.

Info for manual annotations of cluster F1:

- Start number 12 was manually annotated 10 times for cluster F1.

Info for manual annotations of cluster F2:

- Start number 12 was manually annotated 1 time for cluster F2.

Info for manual annotations of cluster J:

- Start number 7 was manually annotated 1 time for cluster J.
- Start number 12 was manually annotated 3 times for cluster J.

### **Gene Information:**

Gene: Alsfro\_66 Start: 41096, Stop: 40917, Start Num: 12

Candidate Starts for Alsfro\_66:

(Start: 12 @41096 has 19 MA's), (15, 41021), (17, 40949), (19, 40925),

Gene: Alvin\_60 Start: 40522, Stop: 40370, Start Num: 13

Candidate Starts for Alvin\_60:

(Start: 12 @40552 has 19 MA's), (Start: 13 @40522 has 1 MA's), (14, 40504), (15, 40474), (16, 40417), (17, 40402), (19, 40378),

Gene: Blue\_59 Start: 41185, Stop: 41003, Start Num: 12

Candidate Starts for Blue\_59:

(Start: 12 @41185 has 19 MA's), (Start: 13 @41155 has 1 MA's), (14, 41137), (15, 41107), (16, 41050), (17, 41035), (19, 41011),

Gene: Che8\_84 Start: 49312, Stop: 49491, Start Num: 12

Candidate Starts for Che8\_84:

(5, 49243), (10, 49279), (11, 49288), (Start: 12 @49312 has 19 MA's), (15, 49387), (17, 49459), (19, 49483),

Gene: Demsculpinboyz\_95 Start: 48539, Stop: 48721, Start Num: 12

Candidate Starts for Demsculpinboyz\_95:

(5, 48470), (10, 48506), (Start: 12 @48539 has 19 MA's), (Start: 13 @48569 has 1 MA's), (14, 48587), (15, 48617), (16, 48674), (17, 48689), (19, 48713),

Gene: EricMillard\_71 Start: 50571, Stop: 50389, Start Num: 12

Candidate Starts for EricMillard\_71:

(5, 50640), (10, 50604), (Start: 12 @50571 has 19 MA's), (Start: 13 @50541 has 1 MA's), (14, 50523), (15, 50493), (16, 50436), (17, 50421), (19, 50397),

Gene: Frankie\_89 Start: 50625, Stop: 50804, Start Num: 12

Candidate Starts for Frankie\_89:

(9, 50589), (Start: 12 @50625 has 19 MA's), (15, 50700), (17, 50772), (19, 50796),

Gene: Harley\_90 Start: 51037, Stop: 51216, Start Num: 12

Candidate Starts for Harley\_90:

(9, 51001), (Start: 12 @51037 has 19 MA's), (15, 51112), (17, 51184), (19, 51208),

Gene: LilMoolah\_79 Start: 48867, Stop: 49046, Start Num: 12

Candidate Starts for LilMoolah\_79:

(Start: 12 @48867 has 19 MA's), (Start: 13 @48894 has 1 MA's), (15, 48942), (17, 49014), (19, 49038),

Gene: Moonbeam\_88 Start: 50964, Stop: 51146, Start Num: 12

Candidate Starts for Moonbeam\_88:

(5, 50895), (10, 50931), (Start: 12 @50964 has 19 MA's), (Start: 13 @50994 has 1 MA's), (14, 51012), (15, 51042), (16, 51099), (17, 51114), (19, 51138),

Gene: Nivrat\_77 Start: 48740, Stop: 48919, Start Num: 12

Candidate Starts for Nivrat\_77:

(Start: 12 @48740 has 19 MA's), (Start: 13 @48767 has 1 MA's), (15, 48815), (17, 48887), (19, 48911),

Gene: Optimus\_76 Start: 51286, Stop: 51104, Start Num: 12

Candidate Starts for Optimus\_76:

(Start: 12 @51286 has 19 MA's), (Start: 13 @51256 has 1 MA's), (14, 51238), (15, 51208), (17, 51136), (19, 51112),

Gene: Pollywog\_87 Start: 51420, Stop: 51602, Start Num: 12

Candidate Starts for Pollywog\_87:

(5, 51351), (10, 51387), (Start: 12 @51420 has 19 MA's), (Start: 13 @51450 has 1 MA's), (14, 51468), (15, 51498), (16, 51555), (17, 51570), (19, 51594),

Gene: Pound\_73 Start: 52483, Stop: 52253, Start Num: 7

Candidate Starts for Pound\_73:

(1, 52576), (2, 52558), (3, 52531), (4, 52516), (6, 52489), (Start: 7 @52483 has 1 MA's), (8, 52477), (Start: 12 @52435 has 19 MA's), (Start: 13 @52405 has 1 MA's), (14, 52387), (15, 52357), (17, 52285), (19, 52261),

Gene: Rialto\_91 Start: 51060, Stop: 51242, Start Num: 12

Candidate Starts for Rialto\_91:

(5, 50991), (10, 51027), (Start: 12 @51060 has 19 MA's), (Start: 13 @51090 has 1 MA's), (14, 51108), (15, 51138), (16, 51195), (17, 51210), (19, 51234),

Gene: Sabbb\_89 Start: 48615, Stop: 48797, Start Num: 12

Candidate Starts for Sabbb\_89:

(5, 48546), (10, 48582), (Start: 12 @48615 has 19 MA's), (Start: 13 @48645 has 1 MA's), (14, 48663), (15, 48693), (16, 48750), (17, 48765), (19, 48789),

Gene: SarFire\_59 Start: 40495, Stop: 40313, Start Num: 12

Candidate Starts for SarFire\_59:

(Start: 12 @40495 has 19 MA's), (14, 40447), (15, 40417), (16, 40360), (17, 40345), (19, 40321),

Gene: SimranZ1\_80 Start: 47949, Stop: 48128, Start Num: 12

Candidate Starts for SimranZ1\_80:

(Start: 12 @47949 has 19 MA's), (Start: 13 @47976 has 1 MA's), (15, 48024), (17, 48096), (18, 48111), (19, 48120),

Gene: TheloniousMonk\_63 Start: 42762, Stop: 42580, Start Num: 12

Candidate Starts for TheloniousMonk\_63:

(Start: 12 @42762 has 19 MA's), (Start: 13 @42732 has 1 MA's), (14, 42714), (15, 42684), (16, 42627), (17, 42612), (19, 42588),

Gene: Thibault\_64 Start: 46876, Stop: 46694, Start Num: 12

Candidate Starts for Thibault\_64:

(5, 46945), (10, 46909), (Start: 12 @46876 has 19 MA's), (Start: 13 @46846 has 1 MA's), (14, 46828), (15, 46798), (17, 46726), (19, 46702),

Gene: Thor\_59 Start: 39853, Stop: 39671, Start Num: 12

Candidate Starts for Thor\_59:

(Start: 12 @39853 has 19 MA's), (14, 39805), (15, 39775), (16, 39718), (17, 39703), (19, 39679),