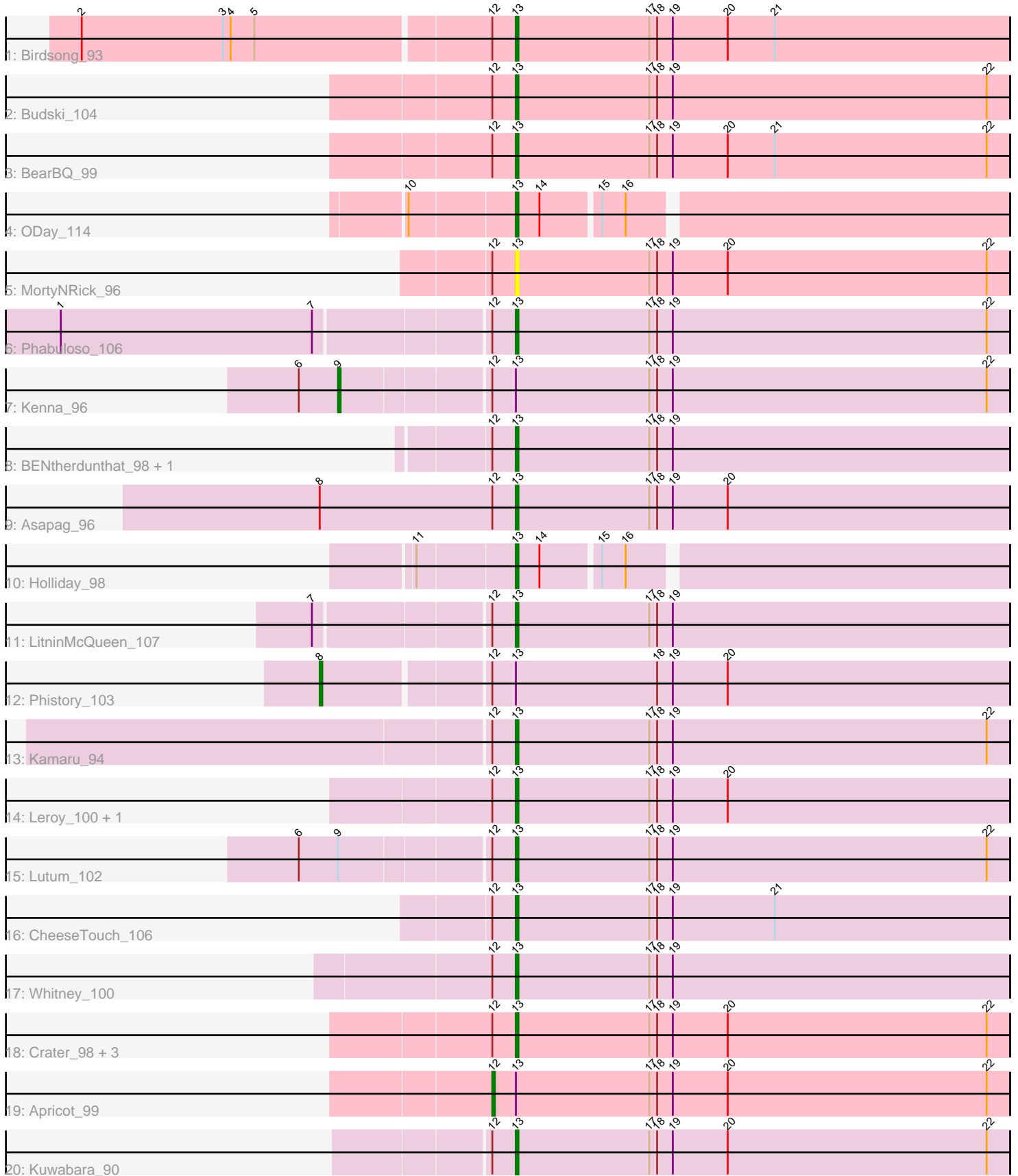


Pham 3725



Note: Tracks are now grouped by subcluster and scaled. Switching in subcluster is indicated by changes in track color. Track scale is now set by default to display the region 30 bp upstream of start 1 to 30 bp downstream of the last possible start. If this default region is judged to be packed too tightly with annotated starts, the track will be further scaled to only show that region of the ORF with annotated starts. This action will be indicated by adding "Zoomed" to the title. For starts, yellow indicates the location of called starts comprised solely of Glimmer/GeneMark auto-annotations, green indicates the location of called starts with at least 1 manual gene annotation.

## Pham 3725 Report

This analysis was run 07/09/24 on database version 566.

Pham number 3725 has 25 members, 2 are drafts.

Phages represented in each track:

- Track 1 : Birdsong\_93
- Track 2 : Budski\_104
- Track 3 : BearBQ\_99
- Track 4 : ODay\_114
- Track 5 : MortyNRick\_96
- Track 6 : Phabuloso\_106
- Track 7 : Kenna\_96
- Track 8 : BENtherdunthat\_98, Getalong\_100
- Track 9 : Asapag\_96
- Track 10 : Holliday\_98
- Track 11 : LitninMcQueen\_107
- Track 12 : Phistory\_103
- Track 13 : Kamaru\_94
- Track 14 : Leroy\_100, Frickyeah\_104
- Track 15 : Lutum\_102
- Track 16 : CheeseTouch\_106
- Track 17 : Whitney\_100
- Track 18 : Crater\_98, Horus\_100, Periwinkle\_107, Ecliptus\_107
- Track 19 : Apricot\_99
- Track 20 : Kuwabara\_90

### ***Summary of Final Annotations (See graph section above for start numbers):***

The start number called the most often in the published annotations is 13, it was called in 20 of the 23 non-draft genes in the pham.

Genes that call this "Most Annotated" start:

• Asapag\_96, BENtherdunthat\_98, BearBQ\_99, Birdsong\_93, Budski\_104, CheeseTouch\_106, Crater\_98, Ecliptus\_107, Frickyeah\_104, Getalong\_100, Holliday\_98, Horus\_100, Kamaru\_94, Kuwabara\_90, Leroy\_100, LitninMcQueen\_107, Lutum\_102, MortyNRick\_96, ODay\_114, Periwinkle\_107, Phabuloso\_106, Whitney\_100,

Genes that have the "Most Annotated" start but do not call it:

- Apricot\_99, Kenna\_96, Phistory\_103,

Genes that do not have the "Most Annotated" start:

- 

### Summary by start number:

Start 8:

- Found in 2 of 25 ( 8.0% ) of genes in pham
- Manual Annotations of this start: 1 of 23
- Called 50.0% of time when present
- Phage (with cluster) where this start called: Phistory\_103 (DN1),

Start 9:

- Found in 2 of 25 ( 8.0% ) of genes in pham
- Manual Annotations of this start: 1 of 23
- Called 50.0% of time when present
- Phage (with cluster) where this start called: Kenna\_96 (DN1),

Start 12:

- Found in 23 of 25 ( 92.0% ) of genes in pham
- Manual Annotations of this start: 1 of 23
- Called 4.3% of time when present
- Phage (with cluster) where this start called: Apricot\_99 (DN3),

Start 13:

- Found in 25 of 25 ( 100.0% ) of genes in pham
- Manual Annotations of this start: 20 of 23
- Called 88.0% of time when present
- Phage (with cluster) where this start called: Asapag\_96 (DN1), BENtherdunthat\_98 (DN1), BearBQ\_99 (DN), Birdsong\_93 (DN), Budski\_104 (DN), CheeseTouch\_106 (DN1), Crater\_98 (DN3), Ecliptus\_107 (DN), Frickyeah\_104 (DN1), Getalong\_100 (DN1), Holliday\_98 (DN1), Horus\_100 (DN1), Kamaru\_94 (DN1), Kuwabara\_90 (DN4), Leroy\_100 (DN1), LitninMcQueen\_107 (DN1), Lutum\_102 (DN1), MortyNRick\_96 (DN), ODay\_114 (DN), Periwinkle\_107 (DN1), Phabuloso\_106 (DN1), Whitney\_100 (DN1),

### Summary by clusters:

There are 4 clusters represented in this pham: DN, DN4, DN1, DN3,

Info for manual annotations of cluster DN:

- Start number 13 was manually annotated 5 times for cluster DN.

Info for manual annotations of cluster DN1:

- Start number 8 was manually annotated 1 time for cluster DN1.
- Start number 9 was manually annotated 1 time for cluster DN1.
- Start number 13 was manually annotated 13 times for cluster DN1.

Info for manual annotations of cluster DN3:

- Start number 12 was manually annotated 1 time for cluster DN3.
- Start number 13 was manually annotated 1 time for cluster DN3.

Info for manual annotations of cluster DN4:

•Start number 13 was manually annotated 1 time for cluster DN4.

**Gene Information:**

Gene: Apricot\_99 Start: 51292, Stop: 51489, Start Num: 12

Candidate Starts for Apricot\_99:

(Start: 12 @51292 has 1 MA's), (Start: 13 @51301 has 20 MA's), (17, 51352), (18, 51355), (19, 51361), (20, 51382), (22, 51481),

Gene: Asapag\_96 Start: 53497, Stop: 53685, Start Num: 13

Candidate Starts for Asapag\_96:

(Start: 8 @53422 has 1 MA's), (Start: 12 @53488 has 1 MA's), (Start: 13 @53497 has 20 MA's), (17, 53548), (18, 53551), (19, 53557), (20, 53578),

Gene: BENtherdunthat\_98 Start: 53066, Stop: 53254, Start Num: 13

Candidate Starts for BENtherdunthat\_98:

(Start: 12 @53057 has 1 MA's), (Start: 13 @53066 has 20 MA's), (17, 53117), (18, 53120), (19, 53126),

Gene: BearBQ\_99 Start: 54180, Stop: 54368, Start Num: 13

Candidate Starts for BearBQ\_99:

(Start: 12 @54171 has 1 MA's), (Start: 13 @54180 has 20 MA's), (17, 54231), (18, 54234), (19, 54240), (20, 54261), (21, 54279), (22, 54360),

Gene: Birdsong\_93 Start: 52168, Stop: 52356, Start Num: 13

Candidate Starts for Birdsong\_93:

(2, 52006), (3, 52060), (4, 52063), (5, 52072), (Start: 12 @52159 has 1 MA's), (Start: 13 @52168 has 20 MA's), (17, 52219), (18, 52222), (19, 52228), (20, 52249), (21, 52267),

Gene: Budski\_104 Start: 54937, Stop: 55125, Start Num: 13

Candidate Starts for Budski\_104:

(Start: 12 @54928 has 1 MA's), (Start: 13 @54937 has 20 MA's), (17, 54988), (18, 54991), (19, 54997), (22, 55117),

Gene: CheeseTouch\_106 Start: 52179, Stop: 52367, Start Num: 13

Candidate Starts for CheeseTouch\_106:

(Start: 12 @52170 has 1 MA's), (Start: 13 @52179 has 20 MA's), (17, 52230), (18, 52233), (19, 52239), (21, 52278),

Gene: Crater\_98 Start: 51645, Stop: 51833, Start Num: 13

Candidate Starts for Crater\_98:

(Start: 12 @51636 has 1 MA's), (Start: 13 @51645 has 20 MA's), (17, 51696), (18, 51699), (19, 51705), (20, 51726), (22, 51825),

Gene: Ecliptus\_107 Start: 54844, Stop: 55032, Start Num: 13

Candidate Starts for Ecliptus\_107:

(Start: 12 @54835 has 1 MA's), (Start: 13 @54844 has 20 MA's), (17, 54895), (18, 54898), (19, 54904), (20, 54925), (22, 55024),

Gene: Frickyeah\_104 Start: 53591, Stop: 53779, Start Num: 13

Candidate Starts for Frickyeah\_104:

(Start: 12 @53582 has 1 MA's), (Start: 13 @53591 has 20 MA's), (17, 53642), (18, 53645), (19, 53651), (20, 53672),

Gene: Getalong\_100 Start: 54413, Stop: 54601, Start Num: 13

Candidate Starts for Getalong\_100:

(Start: 12 @54404 has 1 MA's), (Start: 13 @54413 has 20 MA's), (17, 54464), (18, 54467), (19, 54473),

Gene: Holliday\_98 Start: 55851, Stop: 56030, Start Num: 13

Candidate Starts for Holliday\_98:

(11, 55815), (Start: 13 @55851 has 20 MA's), (14, 55860), (15, 55881), (16, 55890),

Gene: Horus\_100 Start: 53866, Stop: 54054, Start Num: 13

Candidate Starts for Horus\_100:

(Start: 12 @53857 has 1 MA's), (Start: 13 @53866 has 20 MA's), (17, 53917), (18, 53920), (19, 53926), (20, 53947), (22, 54046),

Gene: Kamaru\_94 Start: 51725, Stop: 51913, Start Num: 13

Candidate Starts for Kamaru\_94:

(Start: 12 @51716 has 1 MA's), (Start: 13 @51725 has 20 MA's), (17, 51776), (18, 51779), (19, 51785), (22, 51905),

Gene: Kenna\_96 Start: 52363, Stop: 52614, Start Num: 9

Candidate Starts for Kenna\_96:

(6, 52348), (Start: 9 @52363 has 1 MA's), (Start: 12 @52417 has 1 MA's), (Start: 13 @52426 has 20 MA's), (17, 52477), (18, 52480), (19, 52486), (22, 52606),

Gene: Kuwabara\_90 Start: 53031, Stop: 53219, Start Num: 13

Candidate Starts for Kuwabara\_90:

(Start: 12 @53022 has 1 MA's), (Start: 13 @53031 has 20 MA's), (17, 53082), (18, 53085), (19, 53091), (20, 53112), (22, 53211),

Gene: Leroy\_100 Start: 52061, Stop: 52249, Start Num: 13

Candidate Starts for Leroy\_100:

(Start: 12 @52052 has 1 MA's), (Start: 13 @52061 has 20 MA's), (17, 52112), (18, 52115), (19, 52121), (20, 52142),

Gene: LitninMcQueen\_107 Start: 55490, Stop: 55678, Start Num: 13

Candidate Starts for LitninMcQueen\_107:

(7, 55418), (Start: 12 @55481 has 1 MA's), (Start: 13 @55490 has 20 MA's), (17, 55541), (18, 55544), (19, 55550),

Gene: Lutum\_102 Start: 53745, Stop: 53933, Start Num: 13

Candidate Starts for Lutum\_102:

(6, 53667), (Start: 9 @53682 has 1 MA's), (Start: 12 @53736 has 1 MA's), (Start: 13 @53745 has 20 MA's), (17, 53796), (18, 53799), (19, 53805), (22, 53925),

Gene: MortyNRick\_96 Start: 53085, Stop: 53273, Start Num: 13

Candidate Starts for MortyNRick\_96:

(Start: 12 @53076 has 1 MA's), (Start: 13 @53085 has 20 MA's), (17, 53136), (18, 53139), (19, 53145), (20, 53166), (22, 53265),

Gene: ODay\_114 Start: 57604, Stop: 57783, Start Num: 13

Candidate Starts for ODay\_114:

(10, 57565), (Start: 13 @57604 has 20 MA's), (14, 57613), (15, 57634), (16, 57643),

Gene: Periwinkle\_107 Start: 54868, Stop: 55056, Start Num: 13

Candidate Starts for Periwinkle\_107:

(Start: 12 @54859 has 1 MA's), (Start: 13 @54868 has 20 MA's), (17, 54919), (18, 54922), (19, 54928), (20, 54949), (22, 55048),

Gene: Phabuloso\_106 Start: 54304, Stop: 54492, Start Num: 13

Candidate Starts for Phabuloso\_106:

(1, 54136), (7, 54232), (Start: 12 @54295 has 1 MA's), (Start: 13 @54304 has 20 MA's), (17, 54355), (18, 54358), (19, 54364), (22, 54484),

Gene: Phistory\_103 Start: 52048, Stop: 52305, Start Num: 8

Candidate Starts for Phistory\_103:

(Start: 8 @52048 has 1 MA's), (Start: 12 @52108 has 1 MA's), (Start: 13 @52117 has 20 MA's), (18, 52171), (19, 52177), (20, 52198),

Gene: Whitney\_100 Start: 54636, Stop: 54824, Start Num: 13

Candidate Starts for Whitney\_100:

(Start: 12 @54627 has 1 MA's), (Start: 13 @54636 has 20 MA's), (17, 54687), (18, 54690), (19, 54696),