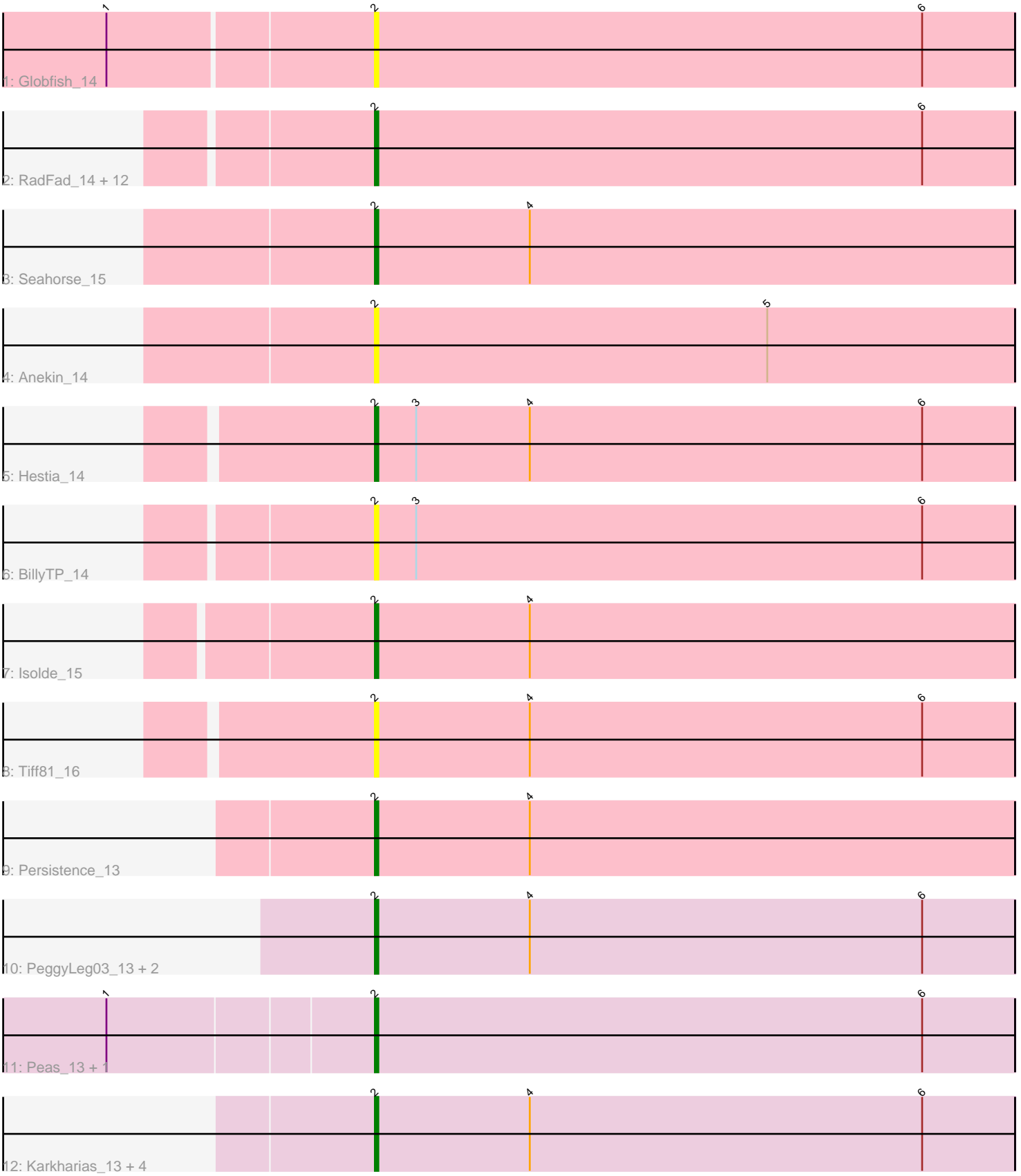


Pham 4218



Note: Tracks are now grouped by subcluster and scaled. Switching in subcluster is indicated by changes in track color. Track scale is now set by default to display the region 30 bp upstream of start 1 to 30 bp downstream of the last possible start. If this default region is judged to be packed too tightly with annotated starts, the track will be further scaled to only show that region of the ORF with annotated starts. This action will be indicated by adding "Zoomed" to the title. For starts, yellow indicates the location of called starts comprised solely of Glimmer/GeneMark auto-annotations, green indicates the location of called starts with at least 1 manual gene annotation.

Pham 4218 Report

This analysis was run 03/30/24 on database version 556.

Pham number 4218 has 31 members, 14 are drafts.

Phages represented in each track:

- Track 1 : Globfish_14
- Track 2 : RadFad_14, Raphaella_15, Richie_14, Hillester_14, BenchScraper_14, Sakai_14, Aikyam_14, CookieBear_15, Auxilium_14, MidnightRain_14, YoungHarleezy_14, Phrank15_14, Gorpy_14
- Track 3 : Seahorse_15
- Track 4 : Anekin_14
- Track 5 : Hestia_14
- Track 6 : BillyTP_14
- Track 7 : Isolde_15
- Track 8 : Tiff81_16
- Track 9 : Persistence_13
- Track 10 : PeggyLeg03_13, Constance_13, Judy_13
- Track 11 : Peas_13, Eileen_13
- Track 12 : Karkharias_13, GlobiWarming_13, Pucara_13, Bridgette_13, ChuckDuck_13

Summary of Final Annotations (See graph section above for start numbers):

The start number called the most often in the published annotations is 2, it was called in 17 of the 17 non-draft genes in the pham.

Genes that call this "Most Annotated" start:

- Aikyam_14, Anekin_14, Auxilium_14, BenchScraper_14, BillyTP_14, Bridgette_13, ChuckDuck_13, Constance_13, CookieBear_15, Eileen_13, Globfish_14, GlobiWarming_13, Gorpy_14, Hestia_14, Hillester_14, Isolde_15, Judy_13, Karkharias_13, MidnightRain_14, Peas_13, PeggyLeg03_13, Persistence_13, Phrank15_14, Pucara_13, RadFad_14, Raphaella_15, Richie_14, Sakai_14, Seahorse_15, Tiff81_16, YoungHarleezy_14,

Genes that have the "Most Annotated" start but do not call it:

-

Genes that do not have the "Most Annotated" start:

-

Summary by start number:

Start 2:

- Found in 31 of 31 (100.0%) of genes in pham
- Manual Annotations of this start: 17 of 17
- Called 100.0% of time when present
- Phage (with cluster) where this start called: Aikyam_14 (AY), Anekin_14 (AY), Auxilium_14 (AY), BenchScraper_14 (AY), BillyTP_14 (AY), Bridgette_13 (FA), ChuckDuck_13 (FA), Constance_13 (FA), CookieBear_15 (AY), Eileen_13 (FA), Globfish_14 (AY), GlobiWarming_13 (FA), Gorpy_14 (AY), Hestia_14 (AY), Hillester_14 (AY), Isolde_15 (AY), Judy_13 (FA), Karkharias_13 (FA), MidnightRain_14 (AY), Peas_13 (FA), PeggyLeg03_13 (FA), Persistence_13 (AY), Phrank15_14 (AY), Pucara_13 (FA), RadFad_14 (AY), Raphaella_15 (AY), Richie_14 (AY), Sakai_14 (AY), Seahorse_15 (AY), Tiff81_16 (AY), YoungHarleezy_14 (AY),

Summary by clusters:

There are 2 clusters represented in this pham: AY, FA,

Info for manual annotations of cluster AY:

- Start number 2 was manually annotated 10 times for cluster AY.

Info for manual annotations of cluster FA:

- Start number 2 was manually annotated 7 times for cluster FA.

Gene Information:

Gene: Aikyam_14 Start: 8869, Stop: 9054, Start Num: 2

Candidate Starts for Aikyam_14:

(Start: 2 @8869 has 17 MA's), (6, 9028),

Gene: Anekin_14 Start: 8984, Stop: 9169, Start Num: 2

Candidate Starts for Anekin_14:

(Start: 2 @8984 has 17 MA's), (5, 9098),

Gene: Auxilium_14 Start: 8868, Stop: 9053, Start Num: 2

Candidate Starts for Auxilium_14:

(Start: 2 @8868 has 17 MA's), (6, 9027),

Gene: BenchScraper_14 Start: 8883, Stop: 9068, Start Num: 2

Candidate Starts for BenchScraper_14:

(Start: 2 @8883 has 17 MA's), (6, 9042),

Gene: BillyTP_14 Start: 8874, Stop: 9059, Start Num: 2

Candidate Starts for BillyTP_14:

(Start: 2 @8874 has 17 MA's), (3, 8886), (6, 9033),

Gene: Bridgette_13 Start: 9034, Stop: 9219, Start Num: 2

Candidate Starts for Bridgette_13:

(Start: 2 @9034 has 17 MA's), (4, 9079), (6, 9193),

Gene: ChuckDuck_13 Start: 8990, Stop: 9175, Start Num: 2
Candidate Starts for ChuckDuck_13:
(Start: 2 @8990 has 17 MA's), (4, 9035), (6, 9149),

Gene: Constance_13 Start: 9037, Stop: 9222, Start Num: 2
Candidate Starts for Constance_13:
(Start: 2 @9037 has 17 MA's), (4, 9082), (6, 9196),

Gene: CookieBear_15 Start: 8868, Stop: 9053, Start Num: 2
Candidate Starts for CookieBear_15:
(Start: 2 @8868 has 17 MA's), (6, 9027),

Gene: Eileen_13 Start: 8998, Stop: 9183, Start Num: 2
Candidate Starts for Eileen_13:
(1, 8923), (Start: 2 @8998 has 17 MA's), (6, 9157),

Gene: Globfish_14 Start: 8932, Stop: 9117, Start Num: 2
Candidate Starts for Globfish_14:
(1, 8857), (Start: 2 @8932 has 17 MA's), (6, 9091),

Gene: GlobiWarming_13 Start: 8991, Stop: 9176, Start Num: 2
Candidate Starts for GlobiWarming_13:
(Start: 2 @8991 has 17 MA's), (4, 9036), (6, 9150),

Gene: Gorpy_14 Start: 8877, Stop: 9062, Start Num: 2
Candidate Starts for Gorpy_14:
(Start: 2 @8877 has 17 MA's), (6, 9036),

Gene: Hestia_14 Start: 8981, Stop: 9166, Start Num: 2
Candidate Starts for Hestia_14:
(Start: 2 @8981 has 17 MA's), (3, 8993), (4, 9026), (6, 9140),

Gene: Hillester_14 Start: 8868, Stop: 9053, Start Num: 2
Candidate Starts for Hillester_14:
(Start: 2 @8868 has 17 MA's), (6, 9027),

Gene: Isolde_15 Start: 8939, Stop: 9124, Start Num: 2
Candidate Starts for Isolde_15:
(Start: 2 @8939 has 17 MA's), (4, 8984),

Gene: Judy_13 Start: 9036, Stop: 9221, Start Num: 2
Candidate Starts for Judy_13:
(Start: 2 @9036 has 17 MA's), (4, 9081), (6, 9195),

Gene: Karkharias_13 Start: 8995, Stop: 9180, Start Num: 2
Candidate Starts for Karkharias_13:
(Start: 2 @8995 has 17 MA's), (4, 9040), (6, 9154),

Gene: MidnightRain_14 Start: 8868, Stop: 9053, Start Num: 2
Candidate Starts for MidnightRain_14:
(Start: 2 @8868 has 17 MA's), (6, 9027),

Gene: Peas_13 Start: 8998, Stop: 9183, Start Num: 2
Candidate Starts for Peas_13:
(1, 8923), (Start: 2 @8998 has 17 MA's), (6, 9157),

Gene: PeggyLeg03_13 Start: 9037, Stop: 9222, Start Num: 2
Candidate Starts for PeggyLeg03_13:
(Start: 2 @9037 has 17 MA's), (4, 9082), (6, 9196),

Gene: Persistence_13 Start: 8938, Stop: 9123, Start Num: 2
Candidate Starts for Persistence_13:
(Start: 2 @8938 has 17 MA's), (4, 8983),

Gene: Phrank15_14 Start: 9021, Stop: 9206, Start Num: 2
Candidate Starts for Phrank15_14:
(Start: 2 @9021 has 17 MA's), (6, 9180),

Gene: Pucara_13 Start: 8998, Stop: 9183, Start Num: 2
Candidate Starts for Pucara_13:
(Start: 2 @8998 has 17 MA's), (4, 9043), (6, 9157),

Gene: RadFad_14 Start: 8868, Stop: 9053, Start Num: 2
Candidate Starts for RadFad_14:
(Start: 2 @8868 has 17 MA's), (6, 9027),

Gene: Raphaella_15 Start: 8868, Stop: 9053, Start Num: 2
Candidate Starts for Raphaella_15:
(Start: 2 @8868 has 17 MA's), (6, 9027),

Gene: Richie_14 Start: 8883, Stop: 9068, Start Num: 2
Candidate Starts for Richie_14:
(Start: 2 @8883 has 17 MA's), (6, 9042),

Gene: Sakai_14 Start: 8877, Stop: 9062, Start Num: 2
Candidate Starts for Sakai_14:
(Start: 2 @8877 has 17 MA's), (6, 9036),

Gene: Seahorse_15 Start: 9123, Stop: 9308, Start Num: 2
Candidate Starts for Seahorse_15:
(Start: 2 @9123 has 17 MA's), (4, 9168),

Gene: Tiff81_16 Start: 9093, Stop: 9278, Start Num: 2
Candidate Starts for Tiff81_16:
(Start: 2 @9093 has 17 MA's), (4, 9138), (6, 9252),

Gene: YoungHarleezy_14 Start: 8881, Stop: 9066, Start Num: 2
Candidate Starts for YoungHarleezy_14:
(Start: 2 @8881 has 17 MA's), (6, 9040),