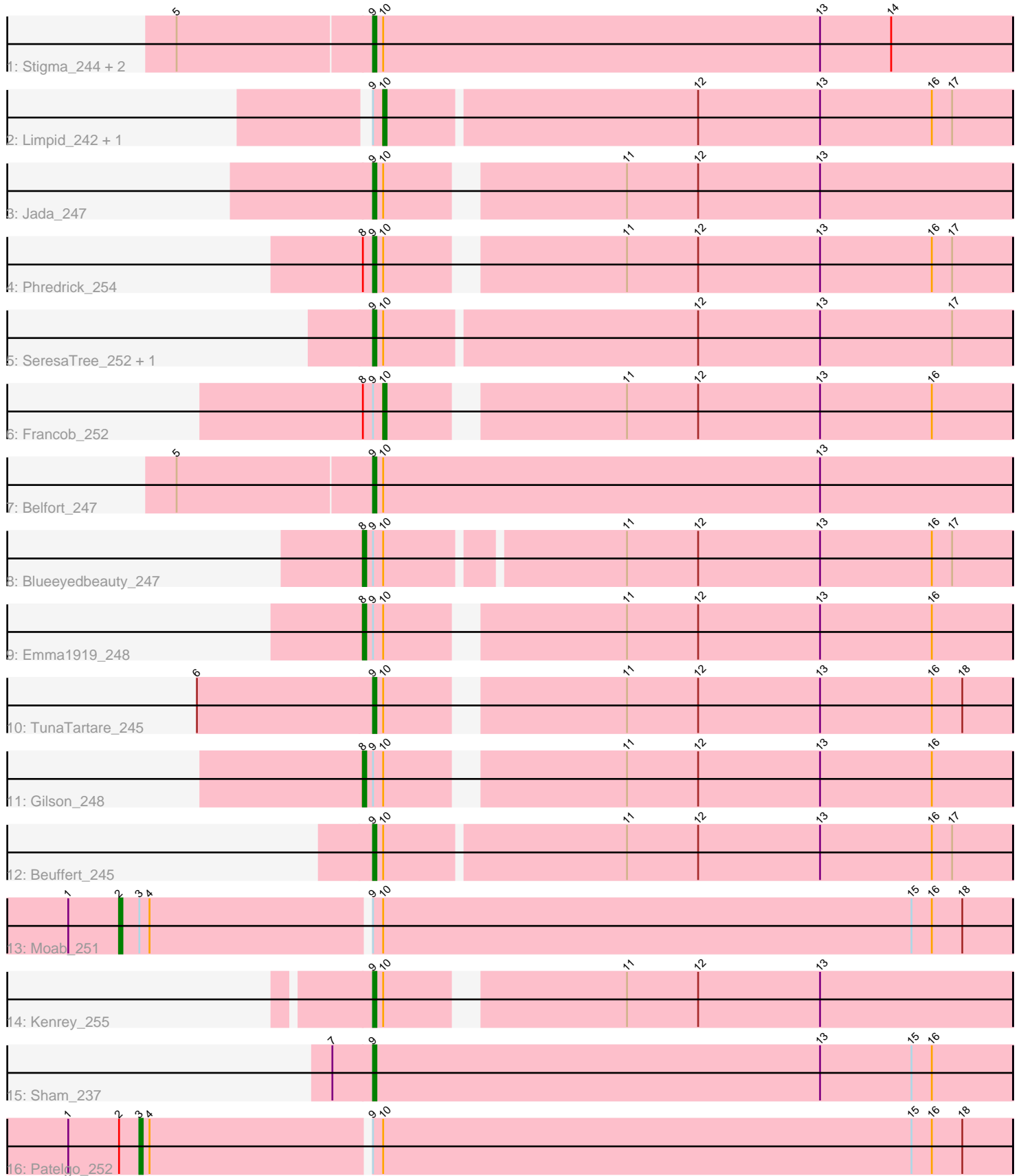


Pham 4458



Note: Tracks are now grouped by subcluster and scaled. Switching in subcluster is indicated by changes in track color. Track scale is now set by default to display the region 30 bp upstream of start 1 to 30 bp downstream of the last possible start. If this default region is judged to be packed too tightly with annotated starts, the track will be further scaled to only show that region of the ORF with annotated starts. This action will be indicated by adding "Zoomed" to the title. For starts, yellow indicates the location of called starts comprised solely of Glimmer/GeneMark auto-annotations, green indicates the location of called starts with at least 1 manual gene annotation.

Pham 4458 Report

This analysis was run 04/28/24 on database version 559.

Pham number 4458 has 20 members, 1 are drafts.

Phages represented in each track:

- Track 1 : Stigma_244, Comrade_242, Karp_246
- Track 2 : Limpid_242, Annadreamy_236
- Track 3 : Jada_247
- Track 4 : Phredrick_254
- Track 5 : SeresaTree_252, Faust_248
- Track 6 : Francob_252
- Track 7 : Belfort_247
- Track 8 : Blueeyedbeauty_247
- Track 9 : Emma1919_248
- Track 10 : TunaTartare_245
- Track 11 : Gilson_248
- Track 12 : Beuffert_245
- Track 13 : Moab_251
- Track 14 : Kenrey_255
- Track 15 : Sham_237
- Track 16 : Patelgo_252

Summary of Final Annotations (See graph section above for start numbers):

The start number called the most often in the published annotations is 9, it was called in 11 of the 19 non-draft genes in the pham.

Genes that call this "Most Annotated" start:

- Belfort_247, Beuffert_245, Comrade_242, Faust_248, Jada_247, Karp_246, Kenrey_255, Phredrick_254, SeresaTree_252, Sham_237, Stigma_244, TunaTartare_245,

Genes that have the "Most Annotated" start but do not call it:

- Annadreamy_236, Blueeyedbeauty_247, Emma1919_248, Francob_252, Gilson_248, Limpid_242, Moab_251, Patelgo_252,

Genes that do not have the "Most Annotated" start:

-

Summary by start number:

Start 2:

- Found in 2 of 20 (10.0%) of genes in pham
- Manual Annotations of this start: 1 of 19
- Called 50.0% of time when present
- Phage (with cluster) where this start called: Moab_251 (BK1),

Start 3:

- Found in 2 of 20 (10.0%) of genes in pham
- Manual Annotations of this start: 1 of 19
- Called 50.0% of time when present
- Phage (with cluster) where this start called: Patelgo_252 (BK1),

Start 8:

- Found in 5 of 20 (25.0%) of genes in pham
- Manual Annotations of this start: 3 of 19
- Called 60.0% of time when present
- Phage (with cluster) where this start called: Blueeyedbeauty_247 (BK1), Emma1919_248 (BK1), Gilson_248 (BK1),

Start 9:

- Found in 20 of 20 (100.0%) of genes in pham
- Manual Annotations of this start: 11 of 19
- Called 60.0% of time when present
- Phage (with cluster) where this start called: Belfort_247 (BK1), Beuffert_245 (BK1), Comrade_242 (BK1), Faust_248 (BK1), Jada_247 (BK1), Karp_246 (BK1), Kenrey_255 (BK1), Phredrick_254 (BK1), SeresaTree_252 (BK1), Sham_237 (BK1), Stigma_244 (BK1), TunaTartare_245 (BK1),

Start 10:

- Found in 19 of 20 (95.0%) of genes in pham
- Manual Annotations of this start: 3 of 19
- Called 15.8% of time when present
- Phage (with cluster) where this start called: Annadreamy_236 (BK1), Francob_252 (BK1), Limpid_242 (BK1),

Summary by clusters:

There is one cluster represented in this pham: BK1

Info for manual annotations of cluster BK1:

- Start number 2 was manually annotated 1 time for cluster BK1.
- Start number 3 was manually annotated 1 time for cluster BK1.
- Start number 8 was manually annotated 3 times for cluster BK1.
- Start number 9 was manually annotated 11 times for cluster BK1.
- Start number 10 was manually annotated 3 times for cluster BK1.

Gene Information:

Gene: Annadreamy_236 Start: 113685, Stop: 113867, Start Num: 10

Candidate Starts for Annadreamy_236:

(Start: 9 @113682 has 11 MA's), (Start: 10 @113685 has 3 MA's), (12, 113775), (13, 113811), (16, 113844), (17, 113850),

Gene: Belfort_247 Start: 118072, Stop: 118260, Start Num: 9

Candidate Starts for Belfort_247:

(5, 118018), (Start: 9 @118072 has 11 MA's), (Start: 10 @118075 has 3 MA's), (13, 118204),

Gene: Beuffert_245 Start: 118264, Stop: 118449, Start Num: 9

Candidate Starts for Beuffert_245:

(Start: 9 @118264 has 11 MA's), (Start: 10 @118267 has 3 MA's), (11, 118336), (12, 118357), (13, 118393), (16, 118426), (17, 118432),

Gene: Blueeyedbeauty_247 Start: 118148, Stop: 118333, Start Num: 8

Candidate Starts for Blueeyedbeauty_247:

(Start: 8 @118148 has 3 MA's), (Start: 9 @118151 has 11 MA's), (Start: 10 @118154 has 3 MA's), (11, 118220), (12, 118241), (13, 118277), (16, 118310), (17, 118316),

Gene: Comrade_242 Start: 118296, Stop: 118484, Start Num: 9

Candidate Starts for Comrade_242:

(5, 118242), (Start: 9 @118296 has 11 MA's), (Start: 10 @118299 has 3 MA's), (13, 118428), (14, 118449),

Gene: Emma1919_248 Start: 116973, Stop: 117155, Start Num: 8

Candidate Starts for Emma1919_248:

(Start: 8 @116973 has 3 MA's), (Start: 9 @116976 has 11 MA's), (Start: 10 @116979 has 3 MA's), (11, 117042), (12, 117063), (13, 117099), (16, 117132),

Gene: Faust_248 Start: 119730, Stop: 119915, Start Num: 9

Candidate Starts for Faust_248:

(Start: 9 @119730 has 11 MA's), (Start: 10 @119733 has 3 MA's), (12, 119823), (13, 119859), (17, 119898),

Gene: Francob_252 Start: 118474, Stop: 118650, Start Num: 10

Candidate Starts for Francob_252:

(Start: 8 @118468 has 3 MA's), (Start: 9 @118471 has 11 MA's), (Start: 10 @118474 has 3 MA's), (11, 118537), (12, 118558), (13, 118594), (16, 118627),

Gene: Gilson_248 Start: 117733, Stop: 117915, Start Num: 8

Candidate Starts for Gilson_248:

(Start: 8 @117733 has 3 MA's), (Start: 9 @117736 has 11 MA's), (Start: 10 @117739 has 3 MA's), (11, 117802), (12, 117823), (13, 117859), (16, 117892),

Gene: Jada_247 Start: 117030, Stop: 117209, Start Num: 9

Candidate Starts for Jada_247:

(Start: 9 @117030 has 11 MA's), (Start: 10 @117033 has 3 MA's), (11, 117096), (12, 117117), (13, 117153),

Gene: Karp_246 Start: 119670, Stop: 119858, Start Num: 9

Candidate Starts for Karp_246:

(5, 119616), (Start: 9 @119670 has 11 MA's), (Start: 10 @119673 has 3 MA's), (13, 119802), (14, 119823),

Gene: Kenrey_255 Start: 119018, Stop: 119197, Start Num: 9

Candidate Starts for Kenrey_255:

(Start: 9 @119018 has 11 MA's), (Start: 10 @119021 has 3 MA's), (11, 119084), (12, 119105), (13, 119141),

Gene: Limpid_242 Start: 118998, Stop: 119180, Start Num: 10

Candidate Starts for Limpid_242:

(Start: 9 @118995 has 11 MA's), (Start: 10 @118998 has 3 MA's), (12, 119088), (13, 119124), (16, 119157), (17, 119163),

Gene: Moab_251 Start: 120123, Stop: 120383, Start Num: 2

Candidate Starts for Moab_251:

(1, 120108), (Start: 2 @120123 has 1 MA's), (Start: 3 @120129 has 1 MA's), (4, 120132), (Start: 9 @120195 has 11 MA's), (Start: 10 @120198 has 3 MA's), (15, 120354), (16, 120360), (18, 120369),

Gene: Patelgo_252 Start: 120810, Stop: 121064, Start Num: 3

Candidate Starts for Patelgo_252:

(1, 120789), (Start: 2 @120804 has 1 MA's), (Start: 3 @120810 has 1 MA's), (4, 120813), (Start: 9 @120876 has 11 MA's), (Start: 10 @120879 has 3 MA's), (15, 121035), (16, 121041), (18, 121050),

Gene: Phredrick_254 Start: 118086, Stop: 118265, Start Num: 9

Candidate Starts for Phredrick_254:

(Start: 8 @118083 has 3 MA's), (Start: 9 @118086 has 11 MA's), (Start: 10 @118089 has 3 MA's), (11, 118152), (12, 118173), (13, 118209), (16, 118242), (17, 118248),

Gene: SeresaTree_252 Start: 119955, Stop: 120140, Start Num: 9

Candidate Starts for SeresaTree_252:

(Start: 9 @119955 has 11 MA's), (Start: 10 @119958 has 3 MA's), (12, 120048), (13, 120084), (17, 120123),

Gene: Sham_237 Start: 119233, Stop: 119421, Start Num: 9

Candidate Starts for Sham_237:

(7, 119224), (Start: 9 @119233 has 11 MA's), (13, 119365), (15, 119392), (16, 119398),

Gene: Stigma_244 Start: 118657, Stop: 118845, Start Num: 9

Candidate Starts for Stigma_244:

(5, 118603), (Start: 9 @118657 has 11 MA's), (Start: 10 @118660 has 3 MA's), (13, 118789), (14, 118810),

Gene: TunaTartare_245 Start: 121194, Stop: 121373, Start Num: 9

Candidate Starts for TunaTartare_245:

(6, 121146), (Start: 9 @121194 has 11 MA's), (Start: 10 @121197 has 3 MA's), (11, 121260), (12, 121281), (13, 121317), (16, 121350), (18, 121359),