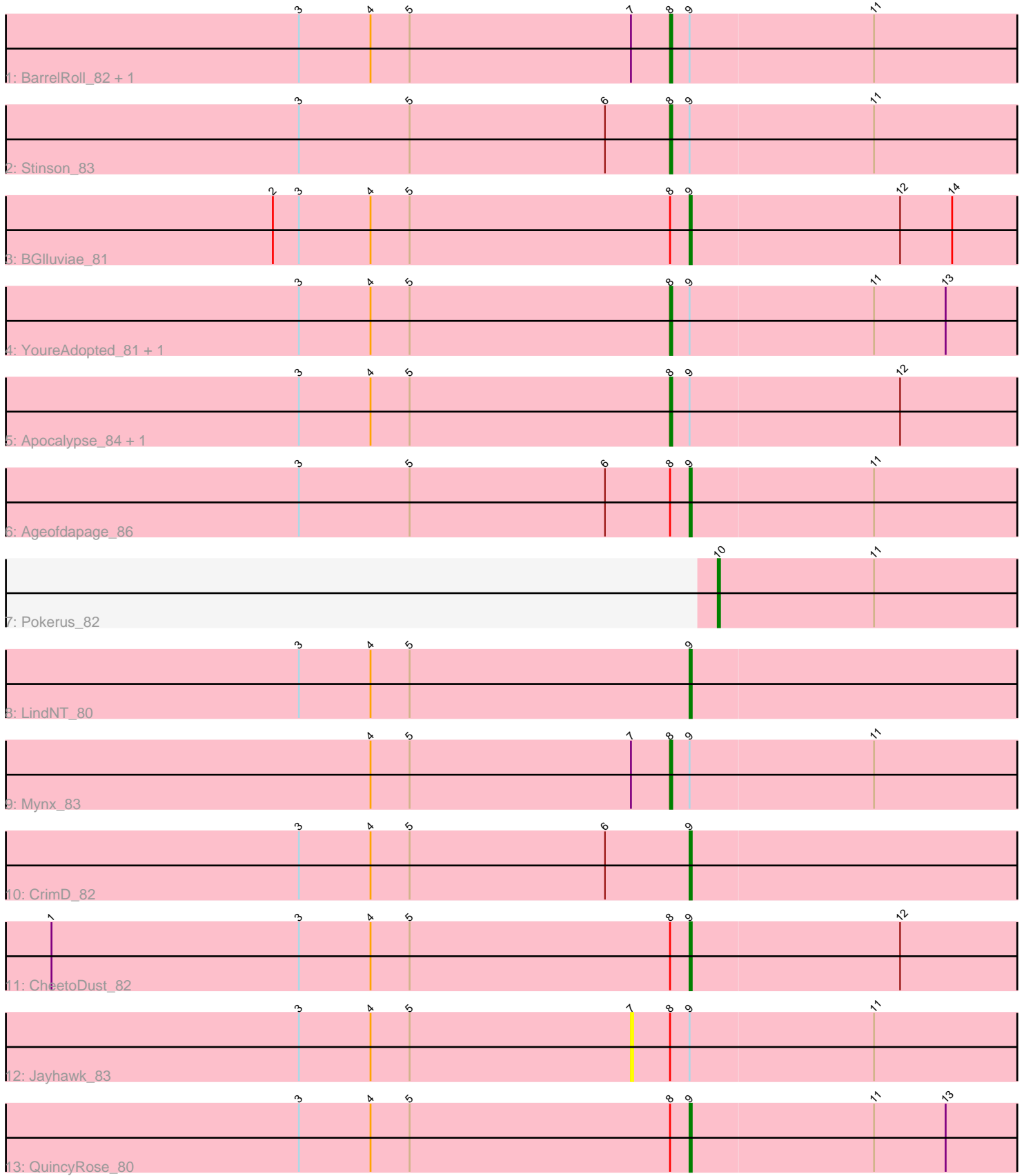


# Pham 4900



Note: Tracks are now grouped by subcluster and scaled. Switching in subcluster is indicated by changes in track color. Track scale is now set by default to display the region 30 bp upstream of start 1 to 30 bp downstream of the last possible start. If this default region is judged to be packed too tightly with annotated starts, the track will be further scaled to only show that region of the ORF with annotated starts. This action will be indicated by adding "Zoomed" to the title. For starts, yellow indicates the location of called starts comprised solely of Glimmer/GeneMark auto-annotations, green indicates the location of called starts with at least 1 manual gene annotation.

## Pham 4900 Report

This analysis was run 04/05/24 on database version 557.

Pham number 4900 has 16 members, 1 are drafts.

Phages represented in each track:

- Track 1 : BarrelRoll\_82, Rapunzel97\_84
- Track 2 : Stinson\_83
- Track 3 : BGlluviae\_81
- Track 4 : YoureAdopted\_81, Ganymede\_82
- Track 5 : Apocalypse\_84, Geraldini\_84
- Track 6 : Ageofdapage\_86
- Track 7 : Pokerus\_82
- Track 8 : LindNT\_80
- Track 9 : Mynx\_83
- Track 10 : CrimD\_82
- Track 11 : CheetoDust\_82
- Track 12 : Jayhawk\_83
- Track 13 : QuincyRose\_80

### ***Summary of Final Annotations (See graph section above for start numbers):***

The start number called the most often in the published annotations is 8, it was called in 8 of the 15 non-draft genes in the pham.

Genes that call this "Most Annotated" start:

- Apocalypse\_84, BarrelRoll\_82, Ganymede\_82, Geraldini\_84, Mynx\_83, Rapunzel97\_84, Stinson\_83, YoureAdopted\_81,

Genes that have the "Most Annotated" start but do not call it:

- Ageofdapage\_86, BGlluviae\_81, CheetoDust\_82, Jayhawk\_83, QuincyRose\_80,

Genes that do not have the "Most Annotated" start:

- CrimD\_82, LindNT\_80, Pokerus\_82,

### **Summary by start number:**

Start 7:

- Found in 4 of 16 ( 25.0% ) of genes in pham
- No Manual Annotations of this start.

- Called 25.0% of time when present
- Phage (with cluster) where this start called: Jayhawk\_83 (K1),

Start 8:

- Found in 13 of 16 ( 81.2% ) of genes in pham
- Manual Annotations of this start: 8 of 15
- Called 61.5% of time when present
- Phage (with cluster) where this start called: Apocalypse\_84 (K1), BarrelRoll\_82 (K1), Ganymede\_82 (K1), Geraldini\_84 (K1), Mynx\_83 (K1), Rapunzel97\_84 (K1), Stinson\_83 (K1), YoureAdopted\_81 (K1),

Start 9:

- Found in 15 of 16 ( 93.8% ) of genes in pham
- Manual Annotations of this start: 6 of 15
- Called 40.0% of time when present
- Phage (with cluster) where this start called: Ageofdapage\_86 (K1), BGlluviae\_81 (K1), CheetoDust\_82 (K1), CrimD\_82 (K1), LindNT\_80 (K1), QuincyRose\_80 (K1),

Start 10:

- Found in 1 of 16 ( 6.2% ) of genes in pham
- Manual Annotations of this start: 1 of 15
- Called 100.0% of time when present
- Phage (with cluster) where this start called: Pokerus\_82 (K1),

### **Summary by clusters:**

There is one cluster represented in this pham: K1

Info for manual annotations of cluster K1:

- Start number 8 was manually annotated 8 times for cluster K1.
- Start number 9 was manually annotated 6 times for cluster K1.
- Start number 10 was manually annotated 1 time for cluster K1.

### **Gene Information:**

Gene: Ageofdapage\_86 Start: 54143, Stop: 54316, Start Num: 9

Candidate Starts for Ageofdapage\_86:

(3, 53963), (5, 54014), (6, 54104), (Start: 8 @54134 has 8 MA's), (Start: 9 @54143 has 6 MA's), (11, 54227),

Gene: Apocalypse\_84 Start: 53564, Stop: 53746, Start Num: 8

Candidate Starts for Apocalypse\_84:

(3, 53393), (4, 53426), (5, 53444), (Start: 8 @53564 has 8 MA's), (Start: 9 @53573 has 6 MA's), (12, 53669),

Gene: BGlluviae\_81 Start: 52893, Stop: 53066, Start Num: 9

Candidate Starts for BGlluviae\_81:

(2, 52701), (3, 52713), (4, 52746), (5, 52764), (Start: 8 @52884 has 8 MA's), (Start: 9 @52893 has 6 MA's), (12, 52989), (14, 53013),

Gene: BarrelRoll\_82 Start: 53281, Stop: 53463, Start Num: 8

Candidate Starts for BarrelRoll\_82:

(3, 53110), (4, 53143), (5, 53161), (7, 53263), (Start: 8 @53281 has 8 MA's), (Start: 9 @53290 has 6 MA's), (11, 53374),

Gene: CheetoDust\_82 Start: 52711, Stop: 52884, Start Num: 9

Candidate Starts for CheetoDust\_82:

(1, 52417), (3, 52531), (4, 52564), (5, 52582), (Start: 8 @52702 has 8 MA's), (Start: 9 @52711 has 6 MA's), (12, 52807),

Gene: CrimD\_82 Start: 53343, Stop: 53516, Start Num: 9

Candidate Starts for CrimD\_82:

(3, 53163), (4, 53196), (5, 53214), (6, 53304), (Start: 9 @53343 has 6 MA's),

Gene: Ganymede\_82 Start: 53322, Stop: 53504, Start Num: 8

Candidate Starts for Ganymede\_82:

(3, 53151), (4, 53184), (5, 53202), (Start: 8 @53322 has 8 MA's), (Start: 9 @53331 has 6 MA's), (11, 53415), (13, 53448),

Gene: Geraldini\_84 Start: 53342, Stop: 53524, Start Num: 8

Candidate Starts for Geraldini\_84:

(3, 53171), (4, 53204), (5, 53222), (Start: 8 @53342 has 8 MA's), (Start: 9 @53351 has 6 MA's), (12, 53447),

Gene: Jayhawk\_83 Start: 53323, Stop: 53523, Start Num: 7

Candidate Starts for Jayhawk\_83:

(3, 53170), (4, 53203), (5, 53221), (7, 53323), (Start: 8 @53341 has 8 MA's), (Start: 9 @53350 has 6 MA's), (11, 53434),

Gene: LindNT\_80 Start: 53349, Stop: 53522, Start Num: 9

Candidate Starts for LindNT\_80:

(3, 53169), (4, 53202), (5, 53220), (Start: 9 @53349 has 6 MA's),

Gene: Mynx\_83 Start: 53624, Stop: 53806, Start Num: 8

Candidate Starts for Mynx\_83:

(4, 53486), (5, 53504), (7, 53606), (Start: 8 @53624 has 8 MA's), (Start: 9 @53633 has 6 MA's), (11, 53717),

Gene: Pokerus\_82 Start: 53346, Stop: 53507, Start Num: 10

Candidate Starts for Pokerus\_82:

(Start: 10 @53346 has 1 MA's), (11, 53418),

Gene: QuincyRose\_80 Start: 53331, Stop: 53504, Start Num: 9

Candidate Starts for QuincyRose\_80:

(3, 53151), (4, 53184), (5, 53202), (Start: 8 @53322 has 8 MA's), (Start: 9 @53331 has 6 MA's), (11, 53415), (13, 53448),

Gene: Rapunzel97\_84 Start: 53296, Stop: 53478, Start Num: 8

Candidate Starts for Rapunzel97\_84:

(3, 53125), (4, 53158), (5, 53176), (7, 53278), (Start: 8 @53296 has 8 MA's), (Start: 9 @53305 has 6 MA's), (11, 53389),

Gene: Stinson\_83 Start: 53487, Stop: 53669, Start Num: 8

Candidate Starts for Stinson\_83:

(3, 53316), (5, 53367), (6, 53457), (Start: 8 @53487 has 8 MA's), (Start: 9 @53496 has 6 MA's), (11, 53580),

Gene: YoureAdopted\_81 Start: 53107, Stop: 53289, Start Num: 8

Candidate Starts for YoureAdopted\_81:

(3, 52936), (4, 52969), (5, 52987), (Start: 8 @53107 has 8 MA's), (Start: 9 @53116 has 6 MA's), (11, 53200), (13, 53233),