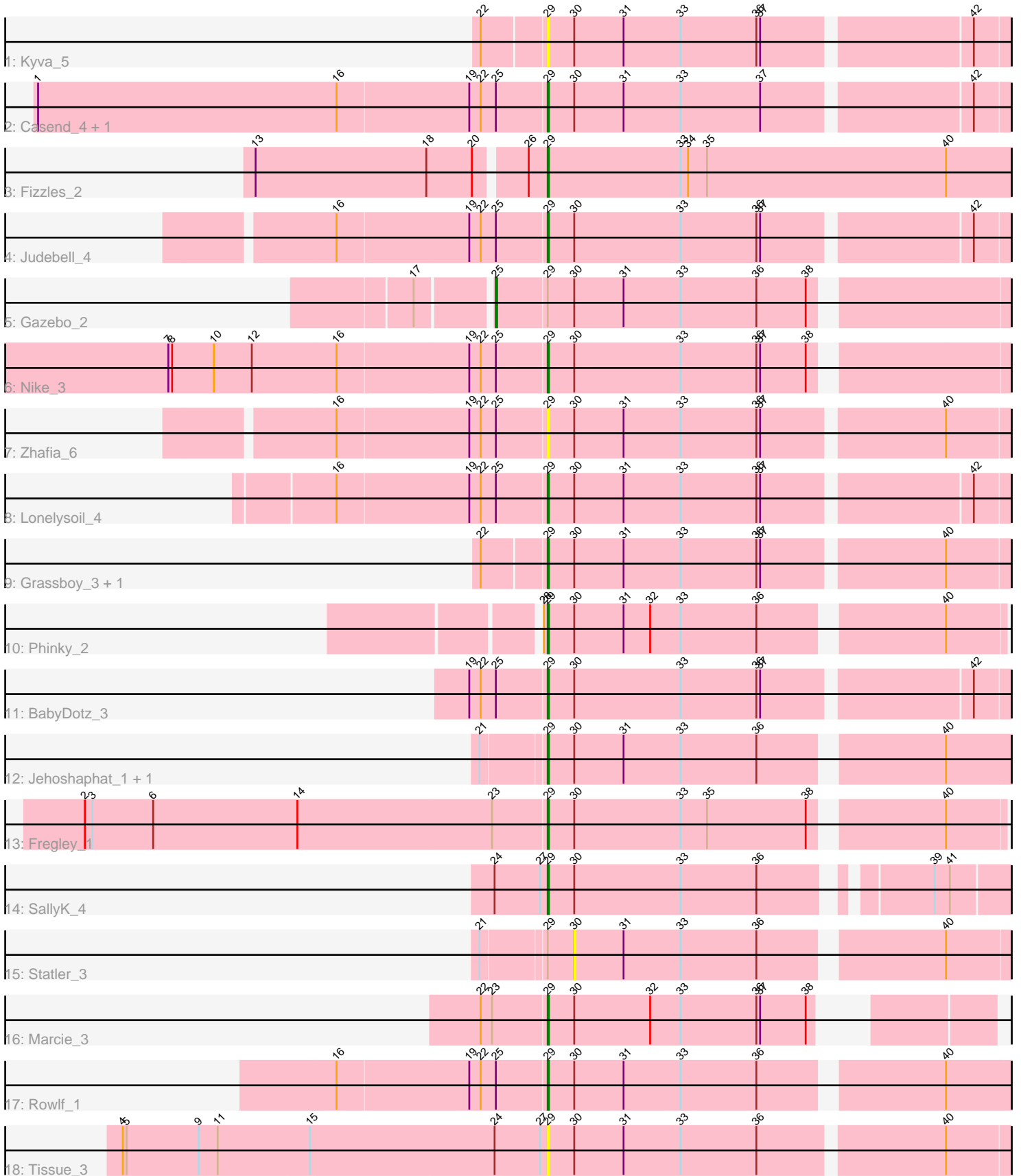


# Pham 4905



Note: Tracks are now grouped by subcluster and scaled. Switching in subcluster is indicated by changes in track color. Track scale is now set by default to display the region 30 bp upstream of start 1 to 30 bp downstream of the last possible start. If this default region is judged to be packed too tightly with annotated starts, the track will be further scaled to only show that region of the ORF with annotated starts. This action will be indicated by adding "Zoomed" to the title. For starts, yellow indicates the location of called starts comprised solely of Glimmer/GeneMark auto-annotations, green indicates the location of called starts with at least 1 manual gene annotation.

## Pham 4905 Report

This analysis was run 07/09/24 on database version 566.

Pham number 4905 has 21 members, 4 are drafts.

Phages represented in each track:

- Track 1 : Kyva\_5
- Track 2 : Casend\_4, Wayne3\_4
- Track 3 : Fizzles\_2
- Track 4 : Judebell\_4
- Track 5 : Gazebo\_2
- Track 6 : Nike\_3
- Track 7 : Zhafia\_6
- Track 8 : Lonelysoil\_4
- Track 9 : Grassboy\_3, StrawberryJamm\_4
- Track 10 : Phinky\_2
- Track 11 : BabyDotz\_3
- Track 12 : Jehoshaphat\_1, Teehee\_1
- Track 13 : Fregley\_1
- Track 14 : SallyK\_4
- Track 15 : Statler\_3
- Track 16 : Marcie\_3
- Track 17 : Rowlf\_1
- Track 18 : Tissue\_3

### ***Summary of Final Annotations (See graph section above for start numbers):***

The start number called the most often in the published annotations is 29, it was called in 16 of the 17 non-draft genes in the pham.

Genes that call this "Most Annotated" start:

- BabyDotz\_3, Casend\_4, Fizzles\_2, Fregley\_1, Grassboy\_3, Jehoshaphat\_1, Judebell\_4, Kyva\_5, Lonelysoil\_4, Marcie\_3, Nike\_3, Phinky\_2, Rowlf\_1, SallyK\_4, StrawberryJamm\_4, Teehee\_1, Tissue\_3, Wayne3\_4, Zhafia\_6,

Genes that have the "Most Annotated" start but do not call it:

- Gazebo\_2, Statler\_3,

Genes that do not have the "Most Annotated" start:

-

## Summary by start number:

### Start 25:

- Found in 9 of 21 ( 42.9% ) of genes in pham
- Manual Annotations of this start: 1 of 17
- Called 11.1% of time when present
- Phage (with cluster) where this start called: Gazebo\_2 (EG),

### Start 29:

- Found in 21 of 21 ( 100.0% ) of genes in pham
- Manual Annotations of this start: 16 of 17
- Called 90.5% of time when present
- Phage (with cluster) where this start called: BabyDotz\_3 (EG), Casend\_4 (EG), Fizzles\_2 (EG), Fregley\_1 (EG), Grassboy\_3 (EG), Jehoshaphat\_1 (EG), Judebell\_4 (EG), Kyva\_5 (EG), Lonelysoil\_4 (EG), Marcie\_3 (EG), Nike\_3 (EG), Phinky\_2 (EG), Rowlf\_1 (EG), SallyK\_4 (EG), StrawberryJamm\_4 (EG), Teehee\_1 (EG), Tissue\_3 (EG), Wayne3\_4 (EG), Zhafia\_6 (EG),

### Start 30:

- Found in 20 of 21 ( 95.2% ) of genes in pham
- No Manual Annotations of this start.
- Called 5.0% of time when present
- Phage (with cluster) where this start called: Statler\_3 (EG),

## Summary by clusters:

There is one cluster represented in this pham: EG

Info for manual annotations of cluster EG:

- Start number 25 was manually annotated 1 time for cluster EG.
- Start number 29 was manually annotated 16 times for cluster EG.

### **Gene Information:**

Gene: BabyDotz\_3 Start: 1678, Stop: 1331, Start Num: 29

Candidate Starts for BabyDotz\_3:

(19, 1738), (22, 1729), (Start: 25 @1717 has 1 MA's), (Start: 29 @1678 has 16 MA's), (30, 1657), (33, 1573), (36, 1513), (37, 1510), (42, 1357),

Gene: Casend\_4 Start: 1568, Stop: 1221, Start Num: 29

Candidate Starts for Casend\_4:

(1, 1964), (16, 1730), (19, 1628), (22, 1619), (Start: 25 @1607 has 1 MA's), (Start: 29 @1568 has 16 MA's), (30, 1547), (31, 1508), (33, 1463), (37, 1400), (42, 1247),

Gene: Fizzles\_2 Start: 1338, Stop: 943, Start Num: 29

Candidate Starts for Fizzles\_2:

(13, 1560), (18, 1425), (20, 1389), (26, 1353), (Start: 29 @1338 has 16 MA's), (33, 1233), (34, 1227), (35, 1212), (40, 1023),

Gene: Fregley\_1 Start: 965, Stop: 624, Start Num: 29

Candidate Starts for Fregley\_1:

(2, 1328), (3, 1322), (6, 1274), (14, 1160), (23, 1007), (Start: 29 @965 has 16 MA's), (30, 944), (33, 860), (35, 839), (38, 761), (40, 668),

Gene: Gazebo\_2 Start: 1298, Stop: 915, Start Num: 25

Candidate Starts for Gazebo\_2:

(17, 1352), (Start: 25 @1298 has 1 MA's), (Start: 29 @1259 has 16 MA's), (30, 1238), (31, 1199), (33, 1154), (36, 1094), (38, 1055),

Gene: Grassboy\_3 Start: 1402, Stop: 1052, Start Num: 29

Candidate Starts for Grassboy\_3:

(22, 1450), (Start: 29 @1402 has 16 MA's), (30, 1381), (31, 1342), (33, 1297), (36, 1237), (37, 1234), (40, 1099),

Gene: Jehoshaphat\_1 Start: 1040, Stop: 672, Start Num: 29

Candidate Starts for Jehoshaphat\_1:

(21, 1088), (Start: 29 @1040 has 16 MA's), (30, 1019), (31, 980), (33, 935), (36, 875), (40, 743),

Gene: Judebell\_4 Start: 1663, Stop: 1316, Start Num: 29

Candidate Starts for Judebell\_4:

(16, 1825), (19, 1723), (22, 1714), (Start: 25 @1702 has 1 MA's), (Start: 29 @1663 has 16 MA's), (30, 1642), (33, 1558), (36, 1498), (37, 1495), (42, 1342),

Gene: Kyva\_5 Start: 1437, Stop: 1090, Start Num: 29

Candidate Starts for Kyva\_5:

(22, 1485), (Start: 29 @1437 has 16 MA's), (30, 1416), (31, 1377), (33, 1332), (36, 1272), (37, 1269), (42, 1116),

Gene: Lonelysoil\_4 Start: 1437, Stop: 1090, Start Num: 29

Candidate Starts for Lonelysoil\_4:

(16, 1599), (19, 1497), (22, 1488), (Start: 25 @1476 has 1 MA's), (Start: 29 @1437 has 16 MA's), (30, 1416), (31, 1377), (33, 1332), (36, 1272), (37, 1269), (42, 1116),

Gene: Marcie\_3 Start: 1060, Stop: 755, Start Num: 29

Candidate Starts for Marcie\_3:

(22, 1111), (23, 1102), (Start: 29 @1060 has 16 MA's), (30, 1039), (32, 979), (33, 955), (36, 895), (37, 892), (38, 856),

Gene: Nike\_3 Start: 1446, Stop: 1102, Start Num: 29

Candidate Starts for Nike\_3:

(7, 1740), (8, 1737), (10, 1704), (12, 1674), (16, 1608), (19, 1506), (22, 1497), (Start: 25 @1485 has 1 MA's), (Start: 29 @1446 has 16 MA's), (30, 1425), (33, 1341), (36, 1281), (37, 1278), (38, 1242),

Gene: Phinky\_2 Start: 1116, Stop: 775, Start Num: 29

Candidate Starts for Phinky\_2:

(28, 1119), (Start: 29 @1116 has 16 MA's), (30, 1095), (31, 1056), (32, 1035), (33, 1011), (36, 951), (40, 819),

Gene: Rowlf\_1 Start: 1040, Stop: 672, Start Num: 29

Candidate Starts for Rowlf\_1:

(16, 1202), (19, 1100), (22, 1091), (Start: 25 @1079 has 1 MA's), (Start: 29 @1040 has 16 MA's), (30, 1019), (31, 980), (33, 935), (36, 875), (40, 743),

Gene: SallyK\_4 Start: 1930, Stop: 1598, Start Num: 29

Candidate Starts for SallyK\_4:

(24, 1972), (27, 1936), (Start: 29 @1930 has 16 MA's), (30, 1909), (33, 1825), (36, 1765), (39, 1654), (41, 1642),

Gene: Statler\_3 Start: 1201, Stop: 878, Start Num: 30

Candidate Starts for Statler\_3:

(21, 1270), (Start: 29 @1222 has 16 MA's), (30, 1201), (31, 1162), (33, 1117), (36, 1057), (40, 925),

Gene: StrawberryJamm\_4 Start: 1430, Stop: 1083, Start Num: 29

Candidate Starts for StrawberryJamm\_4:

(22, 1478), (Start: 29 @1430 has 16 MA's), (30, 1409), (31, 1370), (33, 1325), (36, 1265), (37, 1262), (40, 1127),

Gene: Teehee\_1 Start: 1040, Stop: 672, Start Num: 29

Candidate Starts for Teehee\_1:

(21, 1088), (Start: 29 @1040 has 16 MA's), (30, 1019), (31, 980), (33, 935), (36, 875), (40, 743),

Gene: Tissue\_3 Start: 1420, Stop: 1070, Start Num: 29

Candidate Starts for Tissue\_3:

(4, 1753), (5, 1750), (9, 1693), (11, 1678), (15, 1606), (24, 1462), (27, 1426), (Start: 29 @1420 has 16 MA's), (30, 1399), (31, 1360), (33, 1315), (36, 1255), (40, 1117),

Gene: Wayne3\_4 Start: 1563, Stop: 1216, Start Num: 29

Candidate Starts for Wayne3\_4:

(1, 1959), (16, 1725), (19, 1623), (22, 1614), (Start: 25 @1602 has 1 MA's), (Start: 29 @1563 has 16 MA's), (30, 1542), (31, 1503), (33, 1458), (37, 1395), (42, 1242),

Gene: Zhafia\_6 Start: 1661, Stop: 1311, Start Num: 29

Candidate Starts for Zhafia\_6:

(16, 1823), (19, 1721), (22, 1712), (Start: 25 @1700 has 1 MA's), (Start: 29 @1661 has 16 MA's), (30, 1640), (31, 1601), (33, 1556), (36, 1496), (37, 1493), (40, 1358),