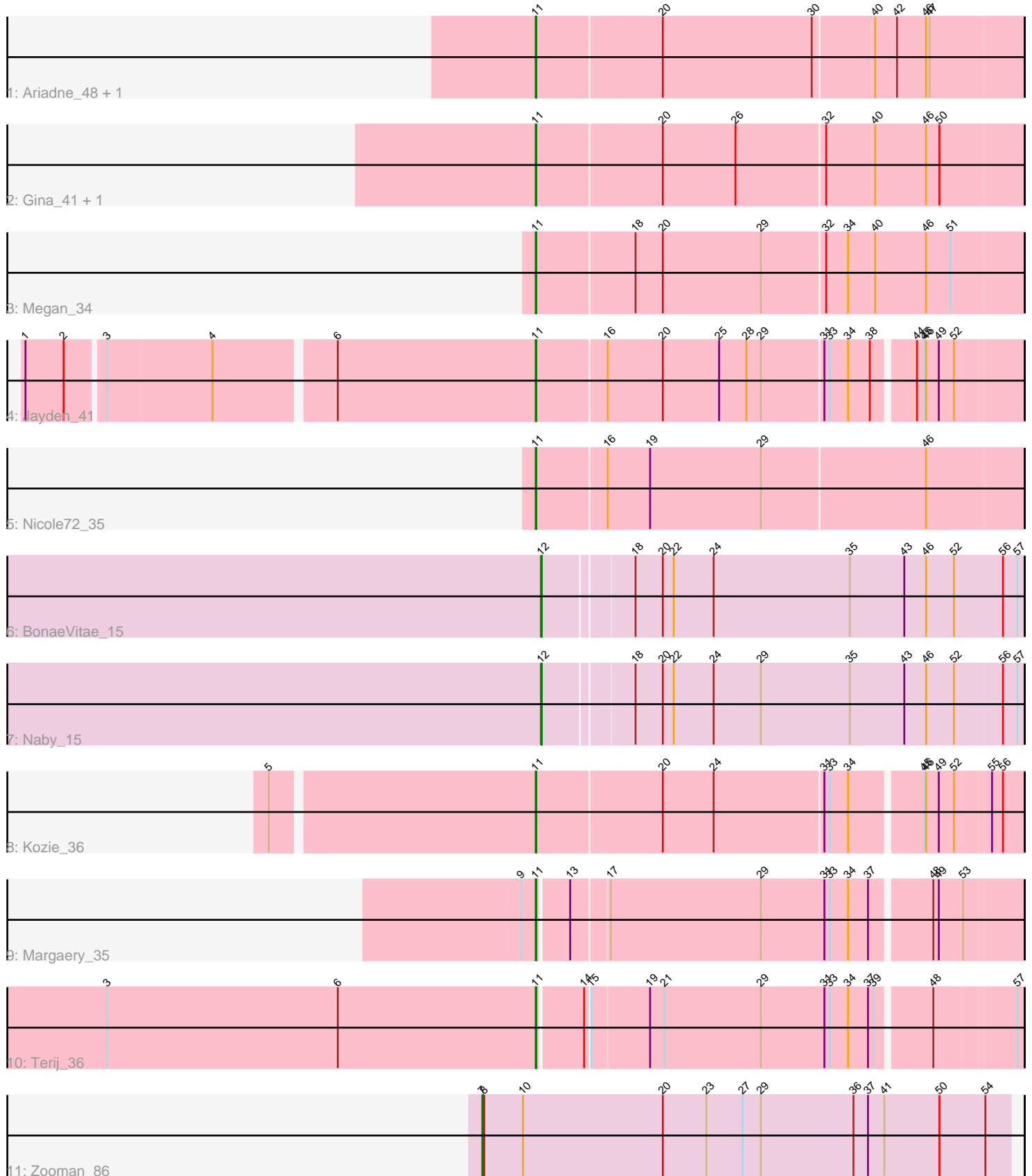


Pham 4917



Note: Tracks are now grouped by subcluster and scaled. Switching in subcluster is indicated by changes in track color. Track scale is now set by default to display the region 30 bp upstream of start 1 to 30 bp downstream of the last possible start. If this default region is judged to be packed too tightly with annotated starts, the track will be further scaled to only show that region of the ORF with annotated starts. This action will be indicated by adding "Zoomed" to the title. For starts, yellow indicates the location of called starts comprised solely of Glimmer/GeneMark auto-annotations, green indicates the location of called starts with at least 1 manual gene annotation.

Pham 4917 Report

This analysis was run 04/05/24 on database version 557.

Pham number 4917 has 13 members, 0 are drafts.

Phages represented in each track:

- Track 1 : Ariadne_48, Smarties_48
- Track 2 : Gina_41, Teamocil_41
- Track 3 : Megan_34
- Track 4 : Jayden_41
- Track 5 : Nicole72_35
- Track 6 : BonaeVitae_15
- Track 7 : Naby_15
- Track 8 : Kozie_36
- Track 9 : Margaery_35
- Track 10 : Terij_36
- Track 11 : Zooman_86

Summary of Final Annotations (See graph section above for start numbers):

The start number called the most often in the published annotations is 11, it was called in 10 of the 13 non-draft genes in the pham.

Genes that call this "Most Annotated" start:

- Ariadne_48, Gina_41, Jayden_41, Kozie_36, Margaery_35, Megan_34, Nicole72_35, Smarties_48, Teamocil_41, Terij_36,

Genes that have the "Most Annotated" start but do not call it:

-

Genes that do not have the "Most Annotated" start:

- BonaeVitae_15, Naby_15, Zooman_86,

Summary by start number:

Start 7:

- Found in 1 of 13 (7.7%) of genes in pham
- Manual Annotations of this start: 1 of 13
- Called 100.0% of time when present
- Phage (with cluster) where this start called: Zooman_86 (GD2),

Start 11:

- Found in 10 of 13 (76.9%) of genes in pham
- Manual Annotations of this start: 10 of 13
- Called 100.0% of time when present
- Phage (with cluster) where this start called: Ariadne_48 (EC), Gina_41 (EC), Jayden_41 (EC), Kozie_36 (EI), Margaery_35 (EI), Megan_34 (EC), Nicole72_35 (EC), Smarties_48 (EC), Teamocil_41 (EC), Terij_36 (EI),

Start 12:

- Found in 2 of 13 (15.4%) of genes in pham
- Manual Annotations of this start: 2 of 13
- Called 100.0% of time when present
- Phage (with cluster) where this start called: BonaeVitae_15 (EE), Naby_15 (EE),

Summary by clusters:

There are 4 clusters represented in this pham: EE, GD2, EI, EC,

Info for manual annotations of cluster EC:

- Start number 11 was manually annotated 7 times for cluster EC.

Info for manual annotations of cluster EE:

- Start number 12 was manually annotated 2 times for cluster EE.

Info for manual annotations of cluster EI:

- Start number 11 was manually annotated 3 times for cluster EI.

Info for manual annotations of cluster GD2:

- Start number 7 was manually annotated 1 time for cluster GD2.

Gene Information:

Gene: Ariadne_48 Start: 30582, Stop: 31367, Start Num: 11

Candidate Starts for Ariadne_48:

(Start: 11 @30582 has 10 MA's), (20, 30783), (30, 31029), (40, 31128), (42, 31161), (46, 31209), (47, 31215),

Gene: BonaeVitae_15 Start: 11864, Stop: 12643, Start Num: 12

Candidate Starts for BonaeVitae_15:

(Start: 12 @11864 has 2 MA's), (18, 12002), (20, 12047), (22, 12065), (24, 12131), (35, 12356), (43, 12446), (46, 12482), (52, 12527), (56, 12608), (57, 12632),

Gene: Gina_41 Start: 28466, Stop: 29254, Start Num: 11

Candidate Starts for Gina_41:

(Start: 11 @28466 has 10 MA's), (20, 28667), (26, 28787), (32, 28931), (40, 29012), (46, 29096), (50, 29117),

Gene: Jayden_41 Start: 29208, Stop: 29975, Start Num: 11

Candidate Starts for Jayden_41:

(1, 28401), (2, 28464), (3, 28524), (4, 28695), (6, 28881), (Start: 11 @29208 has 10 MA's), (16, 29319), (20, 29409), (25, 29502), (28, 29547), (29, 29571), (31, 29670), (33, 29679), (34, 29709), (38, 29745), (44, 29808), (45, 29820), (46, 29823), (49, 29844), (52, 29868),

Gene: Kozie_36 Start: 28386, Stop: 29153, Start Num: 11

Candidate Starts for Kozie_36:

(5, 27966), (Start: 11 @28386 has 10 MA's), (20, 28587), (24, 28671), (31, 28848), (33, 28857), (34, 28887), (45, 28998), (46, 29001), (49, 29022), (52, 29046), (55, 29100), (56, 29118),

Gene: Margaery_35 Start: 28076, Stop: 28834, Start Num: 11

Candidate Starts for Margaery_35:

(9, 28052), (Start: 11 @28076 has 10 MA's), (13, 28124), (17, 28178), (29, 28424), (31, 28529), (33, 28538), (34, 28568), (37, 28601), (48, 28694), (49, 28703), (53, 28739),

Gene: Megan_34 Start: 29539, Stop: 30327, Start Num: 11

Candidate Starts for Megan_34:

(Start: 11 @29539 has 10 MA's), (18, 29695), (20, 29740), (29, 29902), (32, 30004), (34, 30040), (40, 30085), (46, 30169), (51, 30208),

Gene: Naby_15 Start: 11864, Stop: 12640, Start Num: 12

Candidate Starts for Naby_15:

(Start: 12 @11864 has 2 MA's), (18, 12002), (20, 12047), (22, 12065), (24, 12131), (29, 12209), (35, 12356), (43, 12446), (46, 12482), (52, 12527), (56, 12605), (57, 12629),

Gene: Nicole72_35 Start: 30456, Stop: 31244, Start Num: 11

Candidate Starts for Nicole72_35:

(Start: 11 @30456 has 10 MA's), (16, 30567), (19, 30636), (29, 30819), (46, 31086),

Gene: Smarties_48 Start: 30582, Stop: 31367, Start Num: 11

Candidate Starts for Smarties_48:

(Start: 11 @30582 has 10 MA's), (20, 30783), (30, 31029), (40, 31128), (42, 31161), (46, 31209), (47, 31215),

Gene: Teamocil_41 Start: 28565, Stop: 29353, Start Num: 11

Candidate Starts for Teamocil_41:

(Start: 11 @28565 has 10 MA's), (20, 28766), (26, 28886), (32, 29030), (40, 29111), (46, 29195), (50, 29216),

Gene: Terij_36 Start: 27601, Stop: 28356, Start Num: 11

Candidate Starts for Terij_36:

(3, 26893), (6, 27274), (Start: 11 @27601 has 10 MA's), (14, 27670), (15, 27676), (19, 27763), (21, 27787), (29, 27946), (31, 28051), (33, 28060), (34, 28090), (37, 28123), (39, 28132), (48, 28216), (57, 28345),

Gene: Zooman_86 Start: 64032, Stop: 64898, Start Num: 7

Candidate Starts for Zooman_86:

(Start: 7 @64032 has 1 MA's), (8, 64035), (10, 64098), (20, 64329), (23, 64401), (27, 64461), (29, 64491), (36, 64644), (37, 64668), (41, 64695), (50, 64785), (54, 64857),