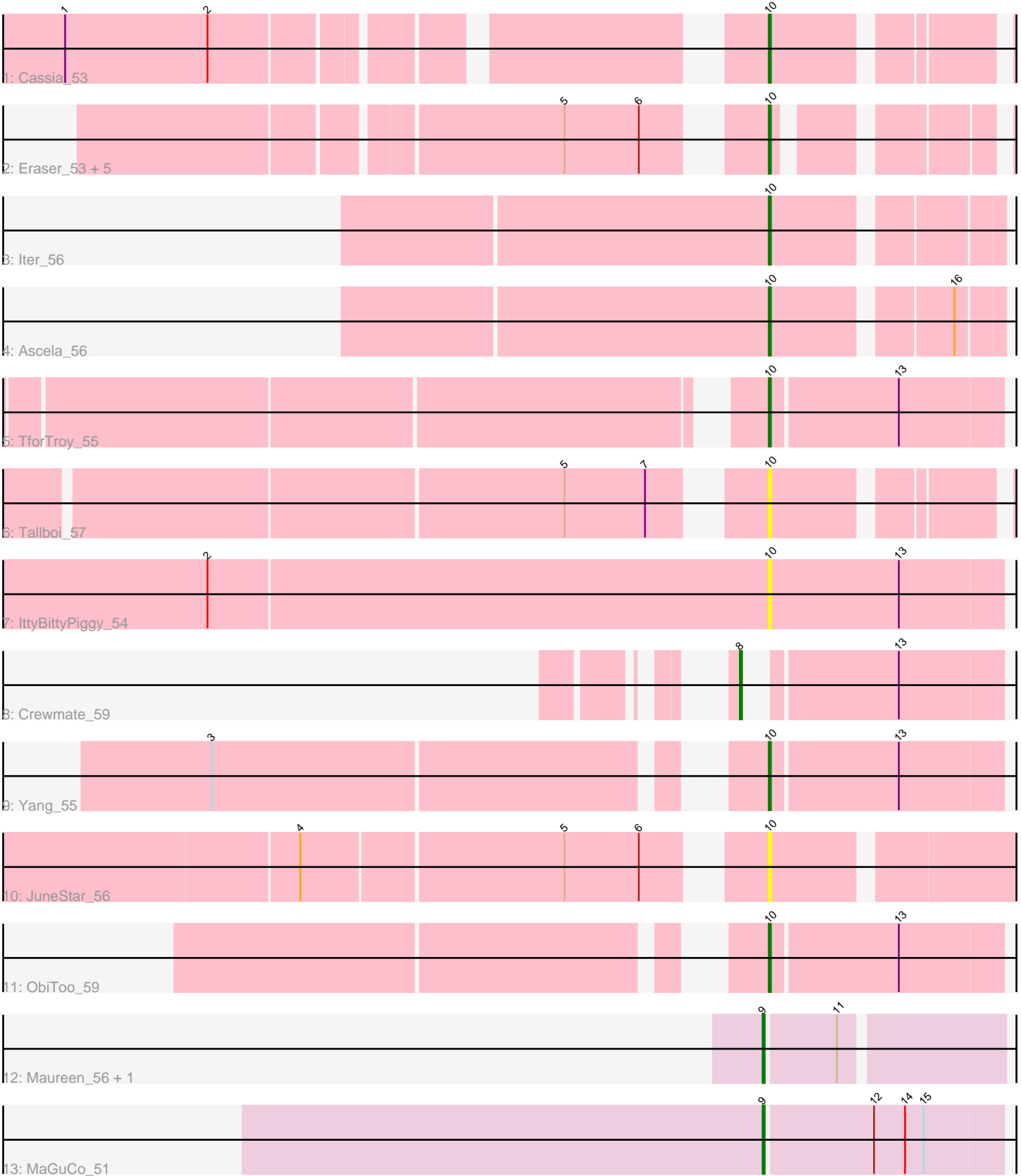


Pham 4936



Note: Tracks are now grouped by subcluster and scaled. Switching in subcluster is indicated by changes in track color. Track scale is now set by default to display the region 30 bp upstream of start 1 to 30 bp downstream of the last possible start. If this default region is judged to be packed too tightly with annotated starts, the track will be further scaled to only show that region of the ORF with annotated starts. This action will be indicated by adding "Zoomed" to the title. For starts, yellow indicates the location of called starts comprised solely of Glimmer/GeneMark auto-annotations, green indicates the location of called starts with at least 1 manual gene annotation.

Pham 4936 Report

This analysis was run 04/28/24 on database version 559.

Pham number 4936 has 19 members, 4 are drafts.

Phages represented in each track:

- Track 1 : Cassia_53
- Track 2 : Eraser_53, Asa16_53, Niobe_53, London_53, Jstan_55, Elezi_53
- Track 3 : Iter_56
- Track 4 : Ascela_56
- Track 5 : TforTroy_55
- Track 6 : Tallboi_57
- Track 7 : IttyBittyPiggy_54
- Track 8 : Crewmate_59
- Track 9 : Yang_55
- Track 10 : JuneStar_56
- Track 11 : ObiToo_59
- Track 12 : Maureen_56, Liebe_56
- Track 13 : MaGuCo_51

Summary of Final Annotations (See graph section above for start numbers):

The start number called the most often in the published annotations is 10, it was called in 11 of the 15 non-draft genes in the pham.

Genes that call this "Most Annotated" start:

- Asa16_53, Ascela_56, Cassia_53, Elezi_53, Eraser_53, Iter_56, IttyBittyPiggy_54, Jstan_55, JuneStar_56, London_53, Niobe_53, ObiToo_59, Tallboi_57, TforTroy_55, Yang_55,

Genes that have the "Most Annotated" start but do not call it:

-

Genes that do not have the "Most Annotated" start:

- Crewmate_59, Liebe_56, MaGuCo_51, Maureen_56,

Summary by start number:

Start 8:

- Found in 1 of 19 (5.3%) of genes in pham

- Manual Annotations of this start: 1 of 15
- Called 100.0% of time when present
- Phage (with cluster) where this start called: Crewmate_59 (AZ1),

Start 9:

- Found in 3 of 19 (15.8%) of genes in pham
- Manual Annotations of this start: 3 of 15
- Called 100.0% of time when present
- Phage (with cluster) where this start called: Liebe_56 (AZ2), MaGuCo_51 (AZ2), Maureen_56 (AZ2),

Start 10:

- Found in 15 of 19 (78.9%) of genes in pham
- Manual Annotations of this start: 11 of 15
- Called 100.0% of time when present
- Phage (with cluster) where this start called: Asa16_53 (AZ1), Ascela_56 (AZ1), Cassia_53 (AZ1), Elezi_53 (AZ1), Eraser_53 (AZ1), Iter_56 (AZ1), IttyBittyPiggy_54 (AZ1), Jstan_55 (AZ1), JuneStar_56 (AZ1), London_53 (AZ1), Niobe_53 (AZ1), ObiToo_59 (AZ1), Tallboi_57 (AZ1), TforTroy_55 (AZ1), Yang_55 (AZ1),

Summary by clusters:

There are 2 clusters represented in this pham: AZ1, AZ2,

Info for manual annotations of cluster AZ1:

- Start number 8 was manually annotated 1 time for cluster AZ1.
- Start number 10 was manually annotated 11 times for cluster AZ1.

Info for manual annotations of cluster AZ2:

- Start number 9 was manually annotated 3 times for cluster AZ2.

Gene Information:

Gene: Asa16_53 Start: 38695, Stop: 38874, Start Num: 10

Candidate Starts for Asa16_53:

(5, 38617), (6, 38653), (Start: 10 @38695 has 11 MA's),

Gene: Ascela_56 Start: 38575, Stop: 38769, Start Num: 10

Candidate Starts for Ascela_56:

(Start: 10 @38575 has 11 MA's), (16, 38653),

Gene: Cassia_53 Start: 37871, Stop: 38062, Start Num: 10

Candidate Starts for Cassia_53:

(1, 37577), (2, 37646), (Start: 10 @37871 has 11 MA's),

Gene: Crewmate_59 Start: 39468, Stop: 39725, Start Num: 8

Candidate Starts for Crewmate_59:

(Start: 8 @39468 has 1 MA's), (13, 39528),

Gene: Elezi_53 Start: 38693, Stop: 38872, Start Num: 10

Candidate Starts for Elezi_53:

(5, 38615), (6, 38651), (Start: 10 @38693 has 11 MA's),

Gene: Eraser_53 Start: 38702, Stop: 38881, Start Num: 10

Candidate Starts for Eraser_53:

(5, 38624), (6, 38660), (Start: 10 @38702 has 11 MA's),

Gene: Iter_56 Start: 38567, Stop: 38761, Start Num: 10

Candidate Starts for Iter_56:

(Start: 10 @38567 has 11 MA's),

Gene: IttyBittyPiggy_54 Start: 37513, Stop: 37716, Start Num: 10

Candidate Starts for IttyBittyPiggy_54:

(2, 37243), (Start: 10 @37513 has 11 MA's), (13, 37576),

Gene: Jstan_55 Start: 38697, Stop: 38876, Start Num: 10

Candidate Starts for Jstan_55:

(5, 38619), (6, 38655), (Start: 10 @38697 has 11 MA's),

Gene: JuneStar_56 Start: 40771, Stop: 40977, Start Num: 10

Candidate Starts for JuneStar_56:

(4, 40570), (5, 40693), (6, 40729), (Start: 10 @40771 has 11 MA's),

Gene: Liebe_56 Start: 40742, Stop: 40942, Start Num: 9

Candidate Starts for Liebe_56:

(Start: 9 @40742 has 3 MA's), (11, 40775),

Gene: London_53 Start: 38693, Stop: 38872, Start Num: 10

Candidate Starts for London_53:

(5, 38615), (6, 38651), (Start: 10 @38693 has 11 MA's),

Gene: MaGuCo_51 Start: 39212, Stop: 39412, Start Num: 9

Candidate Starts for MaGuCo_51:

(Start: 9 @39212 has 3 MA's), (12, 39263), (14, 39278), (15, 39287),

Gene: Maureen_56 Start: 40741, Stop: 40941, Start Num: 9

Candidate Starts for Maureen_56:

(Start: 9 @40741 has 3 MA's), (11, 40774),

Gene: Niobe_53 Start: 38696, Stop: 38875, Start Num: 10

Candidate Starts for Niobe_53:

(5, 38618), (6, 38654), (Start: 10 @38696 has 11 MA's),

Gene: ObiToo_59 Start: 39065, Stop: 39322, Start Num: 10

Candidate Starts for ObiToo_59:

(Start: 10 @39065 has 11 MA's), (13, 39125),

Gene: Tallboi_57 Start: 39063, Stop: 39254, Start Num: 10

Candidate Starts for Tallboi_57:

(5, 38985), (7, 39024), (Start: 10 @39063 has 11 MA's),

Gene: TforTroy_55 Start: 38428, Stop: 38631, Start Num: 10

Candidate Starts for TforTroy_55:

(Start: 10 @38428 has 11 MA's), (13, 38488),

Gene: Yang_55 Start: 38407, Stop: 38610, Start Num: 10
Candidate Starts for Yang_55:
(3, 38173), (Start: 10 @38407 has 11 MA's), (13, 38467),