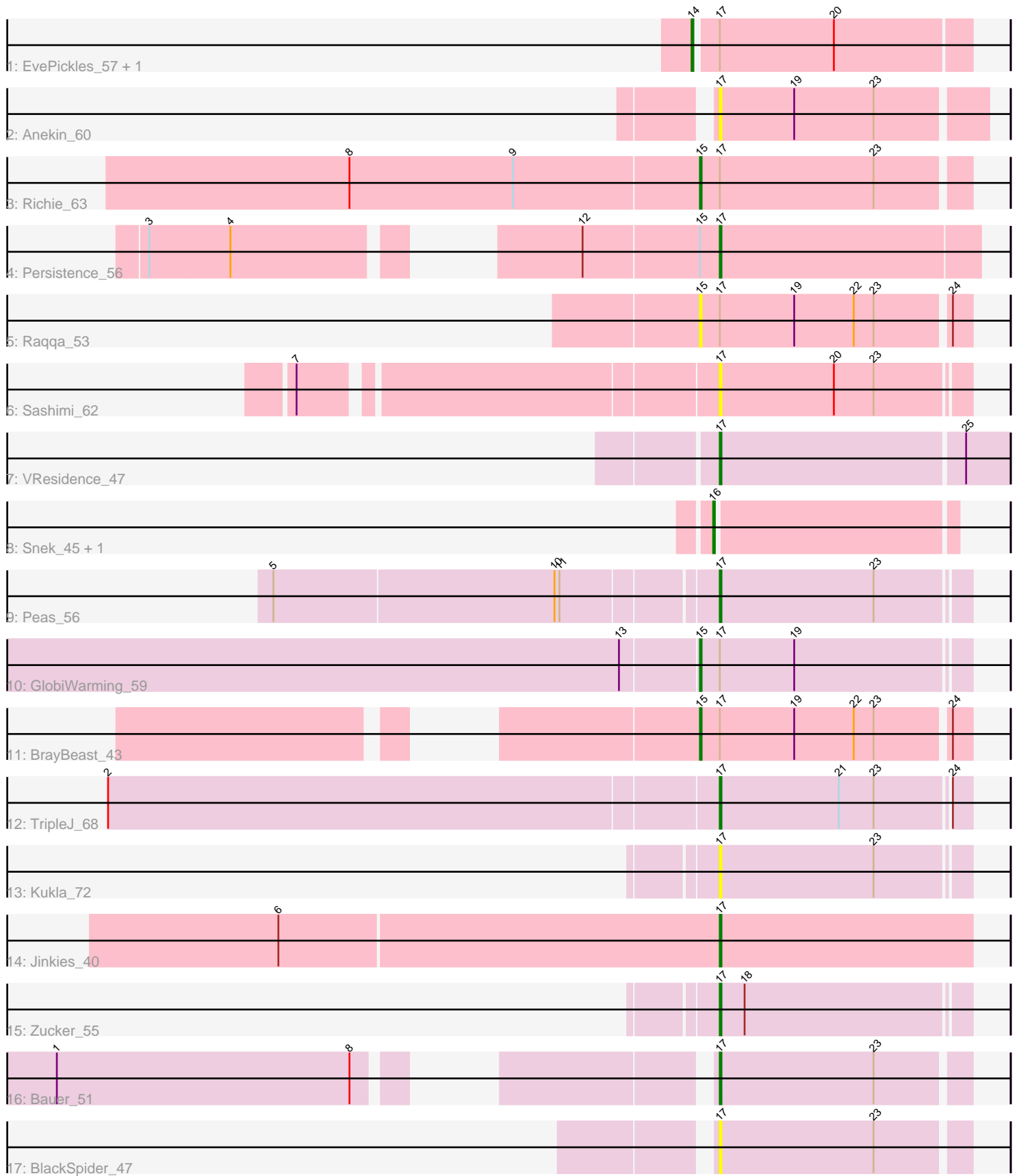


Pham 5079



Note: Tracks are now grouped by subcluster and scaled. Switching in subcluster is indicated by changes in track color. Track scale is now set by default to display the region 30 bp upstream of start 1 to 30 bp downstream of the last possible start. If this default region is judged to be packed too tightly with annotated starts, the track will be further scaled to only show that region of the ORF with annotated starts. This action will be indicated by adding "Zoomed" to the title. For starts, yellow indicates the location of called starts comprised solely of Glimmer/GeneMark auto-annotations, green indicates the location of called starts with at least 1 manual gene annotation.

Pham 5079 Report

This analysis was run 04/28/24 on database version 559.

Pham number 5079 has 19 members, 6 are drafts.

Phages represented in each track:

- Track 1 : EvePickles_57, Globfish_62
- Track 2 : Anekin_60
- Track 3 : Richie_63
- Track 4 : Persistence_56
- Track 5 : Raqqa_53
- Track 6 : Sashimi_62
- Track 7 : VResidence_47
- Track 8 : Snek_45, Tweety19_46
- Track 9 : Peas_56
- Track 10 : GlobiWarming_59
- Track 11 : BrayBeast_43
- Track 12 : TripleJ_68
- Track 13 : Kukla_72
- Track 14 : Jinkies_40
- Track 15 : Zucker_55
- Track 16 : Bauer_51
- Track 17 : BlackSpider_47

Summary of Final Annotations (See graph section above for start numbers):

The start number called the most often in the published annotations is 17, it was called in 7 of the 13 non-draft genes in the pham.

Genes that call this "Most Annotated" start:

- Anekin_60, Bauer_51, BlackSpider_47, Jinkies_40, Kukla_72, Peas_56, Persistence_56, Sashimi_62, TripleJ_68, VResidence_47, Zucker_55,

Genes that have the "Most Annotated" start but do not call it:

- BrayBeast_43, EvePickles_57, Globfish_62, GlobiWarming_59, Raqqa_53, Richie_63,

Genes that do not have the "Most Annotated" start:

- Snek_45, Tweety19_46,

Summary by start number:

Start 14:

- Found in 2 of 19 (10.5%) of genes in pham
- Manual Annotations of this start: 1 of 13
- Called 100.0% of time when present
- Phage (with cluster) where this start called: EvePickles_57 (AY), Globfish_62 (AY),

Start 15:

- Found in 5 of 19 (26.3%) of genes in pham
- Manual Annotations of this start: 3 of 13
- Called 80.0% of time when present
- Phage (with cluster) where this start called: BrayBeast_43 (FB), GlobiWarming_59 (FA), Raqqa_53 (AY), Richie_63 (AY),

Start 16:

- Found in 2 of 19 (10.5%) of genes in pham
- Manual Annotations of this start: 2 of 13
- Called 100.0% of time when present
- Phage (with cluster) where this start called: Snek_45 (AZ3), Tweety19_46 (AZ3),

Start 17:

- Found in 17 of 19 (89.5%) of genes in pham
- Manual Annotations of this start: 7 of 13
- Called 64.7% of time when present
- Phage (with cluster) where this start called: Anekin_60 (AY), Bauer_51 (FN), BlackSpider_47 (FN), Jinkies_40 (FL), Kukla_72 (FJ), Peas_56 (FA), Persistence_56 (AY), Sashimi_62 (AY), TripleJ_68 (FJ), VResidence_47 (AZ1), Zucker_55 (FN),

Summary by clusters:

There are 8 clusters represented in this pham: FA, FB, AY, AZ1, FJ, AZ3, FL, FN,

Info for manual annotations of cluster AY:

- Start number 14 was manually annotated 1 time for cluster AY.
- Start number 15 was manually annotated 1 time for cluster AY.
- Start number 17 was manually annotated 1 time for cluster AY.

Info for manual annotations of cluster AZ1:

- Start number 17 was manually annotated 1 time for cluster AZ1.

Info for manual annotations of cluster AZ3:

- Start number 16 was manually annotated 2 times for cluster AZ3.

Info for manual annotations of cluster FA:

- Start number 15 was manually annotated 1 time for cluster FA.
- Start number 17 was manually annotated 1 time for cluster FA.

Info for manual annotations of cluster FB:

- Start number 15 was manually annotated 1 time for cluster FB.

Info for manual annotations of cluster FJ:

- Start number 17 was manually annotated 1 time for cluster FJ.

Info for manual annotations of cluster FL:

- Start number 17 was manually annotated 1 time for cluster FL.

Info for manual annotations of cluster FN:

- Start number 17 was manually annotated 2 times for cluster FN.

Gene Information:

Gene: Anekin_60 Start: 34214, Stop: 34369, Start Num: 17

Candidate Starts for Anekin_60:

(Start: 17 @34214 has 7 MA's), (19, 34259), (23, 34307),

Gene: Bauer_51 Start: 31604, Stop: 31750, Start Num: 17

Candidate Starts for Bauer_51:

(1, 31280), (8, 31457), (Start: 17 @31604 has 7 MA's), (23, 31697),

Gene: BlackSpider_47 Start: 30762, Stop: 30908, Start Num: 17

Candidate Starts for BlackSpider_47:

(Start: 17 @30762 has 7 MA's), (23, 30855),

Gene: BrayBeast_43 Start: 27670, Stop: 27828, Start Num: 15

Candidate Starts for BrayBeast_43:

(Start: 15 @27670 has 3 MA's), (Start: 17 @27682 has 7 MA's), (19, 27727), (22, 27763), (23, 27775), (24, 27817),

Gene: EvePickles_57 Start: 34218, Stop: 34379, Start Num: 14

Candidate Starts for EvePickles_57:

(Start: 14 @34218 has 1 MA's), (Start: 17 @34230 has 7 MA's), (20, 34299),

Gene: Globfish_62 Start: 34657, Stop: 34818, Start Num: 14

Candidate Starts for Globfish_62:

(Start: 14 @34657 has 1 MA's), (Start: 17 @34669 has 7 MA's), (20, 34738),

Gene: GlobiWarming_59 Start: 35828, Stop: 35986, Start Num: 15

Candidate Starts for GlobiWarming_59:

(13, 35783), (Start: 15 @35828 has 3 MA's), (Start: 17 @35840 has 7 MA's), (19, 35885),

Gene: Jinkies_40 Start: 31888, Stop: 32040, Start Num: 17

Candidate Starts for Jinkies_40:

(6, 31624), (Start: 17 @31888 has 7 MA's),

Gene: Kukla_72 Start: 40952, Stop: 41098, Start Num: 17

Candidate Starts for Kukla_72:

(Start: 17 @40952 has 7 MA's), (23, 41045),

Gene: Peas_56 Start: 37478, Stop: 37624, Start Num: 17

Candidate Starts for Peas_56:

(5, 37220), (10, 37388), (11, 37391), (Start: 17 @37478 has 7 MA's), (23, 37571),

Gene: Persistence_56 Start: 33064, Stop: 33219, Start Num: 17

Candidate Starts for Persistence_56:

(3, 32785), (4, 32833), (12, 32983), (Start: 15 @33052 has 3 MA's), (Start: 17 @33064 has 7 MA's),

Gene: Raqqa_53 Start: 31699, Stop: 31857, Start Num: 15

Candidate Starts for Raqqa_53:

(Start: 15 @31699 has 3 MA's), (Start: 17 @31711 has 7 MA's), (19, 31756), (22, 31792), (23, 31804), (24, 31846),

Gene: Richie_63 Start: 35064, Stop: 35222, Start Num: 15

Candidate Starts for Richie_63:

(8, 34854), (9, 34953), (Start: 15 @35064 has 3 MA's), (Start: 17 @35076 has 7 MA's), (23, 35169),

Gene: Sashimi_62 Start: 35240, Stop: 35386, Start Num: 17

Candidate Starts for Sashimi_62:

(7, 35006), (Start: 17 @35240 has 7 MA's), (20, 35309), (23, 35333),

Gene: Snek_45 Start: 32578, Stop: 32718, Start Num: 16

Candidate Starts for Snek_45:

(Start: 16 @32578 has 2 MA's),

Gene: TripleJ_68 Start: 40277, Stop: 40423, Start Num: 17

Candidate Starts for TripleJ_68:

(2, 39914), (Start: 17 @40277 has 7 MA's), (21, 40349), (23, 40370), (24, 40412),

Gene: Tweety19_46 Start: 32578, Stop: 32718, Start Num: 16

Candidate Starts for Tweety19_46:

(Start: 16 @32578 has 2 MA's),

Gene: VResidence_47 Start: 33727, Stop: 33897, Start Num: 17

Candidate Starts for VResidence_47:

(Start: 17 @33727 has 7 MA's), (25, 33871),

Gene: Zucker_55 Start: 33821, Stop: 33967, Start Num: 17

Candidate Starts for Zucker_55:

(Start: 17 @33821 has 7 MA's), (18, 33836),