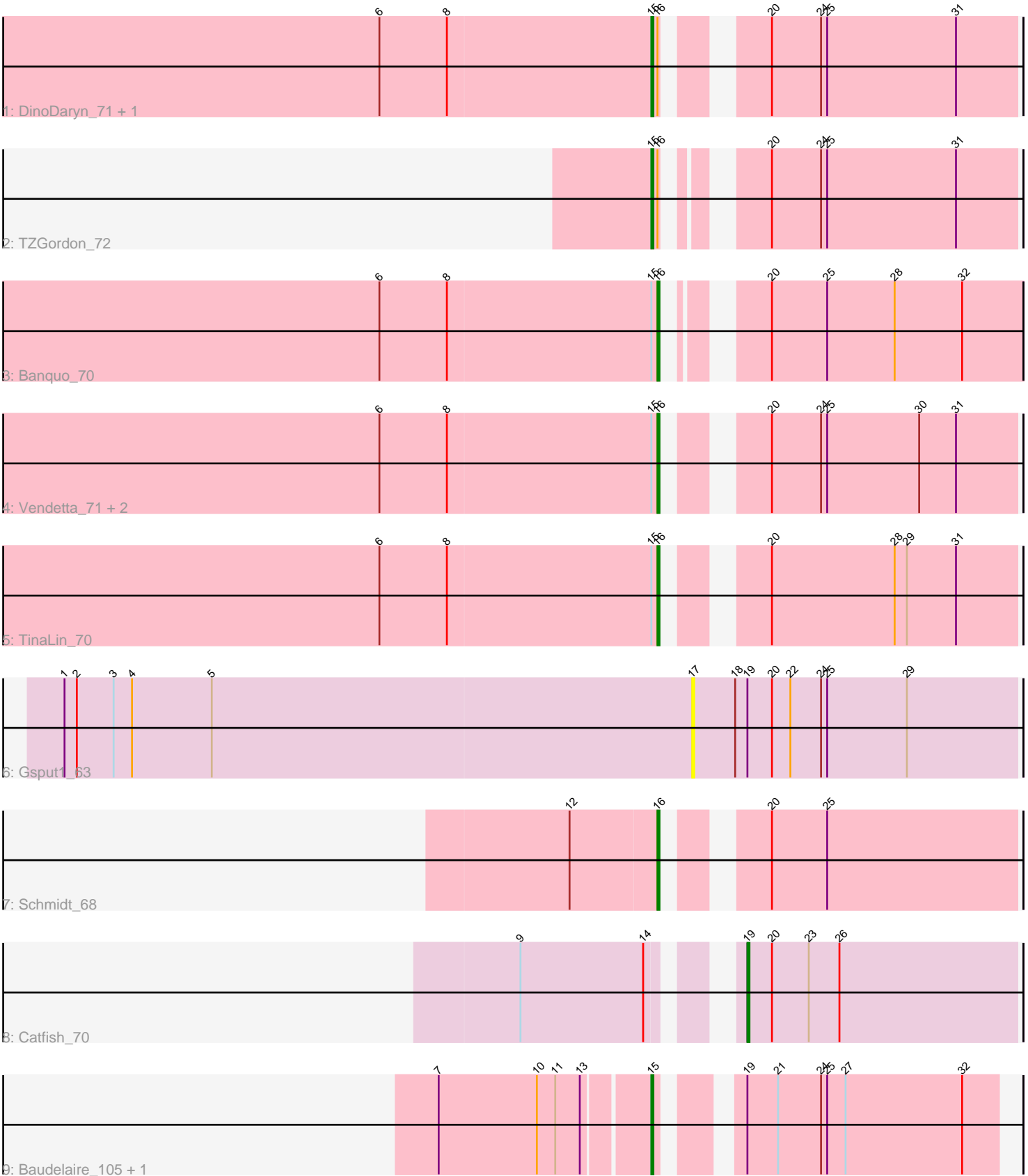


Pham 5107



Note: Tracks are now grouped by subcluster and scaled. Switching in subcluster is indicated by changes in track color. Track scale is now set by default to display the region 30 bp upstream of start 1 to 30 bp downstream of the last possible start. If this default region is judged to be packed too tightly with annotated starts, the track will be further scaled to only show that region of the ORF with annotated starts. This action will be indicated by adding "Zoomed" to the title. For starts, yellow indicates the location of called starts comprised solely of Glimmer/GeneMark auto-annotations, green indicates the location of called starts with at least 1 manual gene annotation.

Pham 5107 Report

This analysis was run 04/05/24 on database version 557.

Pham number 5107 has 13 members, 1 are drafts.

Phages represented in each track:

- Track 1 : DinoDaryn_71, Huffy_71
- Track 2 : TZGordon_72
- Track 3 : Banquo_70
- Track 4 : Vendetta_71, Splinter_71, Goib_71
- Track 5 : TinaLin_70
- Track 6 : Gspu1_63
- Track 7 : Schmidt_68
- Track 8 : Catfish_70
- Track 9 : Baudelaire_105, Aegeus_105

Summary of Final Annotations (See graph section above for start numbers):

The start number called the most often in the published annotations is 16, it was called in 6 of the 12 non-draft genes in the pham.

Genes that call this "Most Annotated" start:

- Banquo_70, Goib_71, Schmidt_68, Splinter_71, TinaLin_70, Vendetta_71,

Genes that have the "Most Annotated" start but do not call it:

- DinoDaryn_71, Huffy_71, TZGordon_72,

Genes that do not have the "Most Annotated" start:

- Aegeus_105, Baudelaire_105, Catfish_70, Gspu1_63,

Summary by start number:

Start 15:

- Found in 10 of 13 (76.9%) of genes in pham
- Manual Annotations of this start: 5 of 12
- Called 50.0% of time when present
- Phage (with cluster) where this start called: Aegeus_105 (L5), Baudelaire_105 (L5), DinoDaryn_71 (CU1), Huffy_71 (CU1), TZGordon_72 (CU1),

Start 16:

- Found in 9 of 13 (69.2%) of genes in pham
- Manual Annotations of this start: 6 of 12
- Called 66.7% of time when present
- Phage (with cluster) where this start called: Banquo_70 (CU1), Goib_71 (CU1), Schmidt_68 (CU4), Splinter_71 (CU1), TinaLin_70 (CU1), Vendetta_71 (CU1),

Start 17:

- Found in 1 of 13 (7.7%) of genes in pham
- No Manual Annotations of this start.
- Called 100.0% of time when present
- Phage (with cluster) where this start called: Gsput1_63 (CU2),

Start 19:

- Found in 4 of 13 (30.8%) of genes in pham
- Manual Annotations of this start: 1 of 12
- Called 25.0% of time when present
- Phage (with cluster) where this start called: Catfish_70 (CU5),

Summary by clusters:

There are 5 clusters represented in this pham: CU4, CU5, L5, CU2, CU1,

Info for manual annotations of cluster CU1:

- Start number 15 was manually annotated 3 times for cluster CU1.
- Start number 16 was manually annotated 5 times for cluster CU1.

Info for manual annotations of cluster CU4:

- Start number 16 was manually annotated 1 time for cluster CU4.

Info for manual annotations of cluster CU5:

- Start number 19 was manually annotated 1 time for cluster CU5.

Info for manual annotations of cluster L5:

- Start number 15 was manually annotated 2 times for cluster L5.

Gene Information:

Gene: Aegeus_105 Start: 62484, Stop: 62633, Start Num: 15

Candidate Starts for Aegeus_105:

(7, 62385), (10, 62433), (11, 62442), (13, 62454), (Start: 15 @62484 has 5 MA's), (Start: 19 @62511 has 1 MA's), (21, 62526), (24, 62547), (25, 62550), (27, 62559), (32, 62616),

Gene: Banquo_70 Start: 41871, Stop: 42023, Start Num: 16

Candidate Starts for Banquo_70:

(6, 41736), (8, 41769), (Start: 15 @41868 has 5 MA's), (Start: 16 @41871 has 6 MA's), (20, 41901), (25, 41928), (28, 41961), (32, 41994),

Gene: Baudelaire_105 Start: 62484, Stop: 62633, Start Num: 15

Candidate Starts for Baudelaire_105:

(7, 62385), (10, 62433), (11, 62442), (13, 62454), (Start: 15 @62484 has 5 MA's), (Start: 19 @62511 has 1 MA's), (21, 62526), (24, 62547), (25, 62550), (27, 62559), (32, 62616),

Gene: Catfish_70 Start: 43964, Stop: 44095, Start Num: 19

Candidate Starts for Catfish_70:

(9, 43877), (14, 43937), (Start: 19 @43964 has 1 MA's), (20, 43976), (23, 43994), (26, 44009),

Gene: DinoDaryn_71 Start: 42146, Stop: 42301, Start Num: 15

Candidate Starts for DinoDaryn_71:

(6, 42014), (8, 42047), (Start: 15 @42146 has 5 MA's), (Start: 16 @42149 has 6 MA's), (20, 42182), (24, 42206), (25, 42209), (31, 42272),

Gene: Goib_71 Start: 43247, Stop: 43399, Start Num: 16

Candidate Starts for Goib_71:

(6, 43112), (8, 43145), (Start: 15 @43244 has 5 MA's), (Start: 16 @43247 has 6 MA's), (20, 43280), (24, 43304), (25, 43307), (30, 43352), (31, 43370),

Gene: Gspu1_63 Start: 40934, Stop: 41092, Start Num: 17

Candidate Starts for Gspu1_63:

(1, 40628), (2, 40634), (3, 40652), (4, 40661), (5, 40700), (17, 40934), (18, 40955), (Start: 19 @40961 has 1 MA's), (20, 40973), (22, 40982), (24, 40997), (25, 41000), (29, 41039),

Gene: Huff_71 Start: 42146, Stop: 42301, Start Num: 15

Candidate Starts for Huff_71:

(6, 42014), (8, 42047), (Start: 15 @42146 has 5 MA's), (Start: 16 @42149 has 6 MA's), (20, 42182), (24, 42206), (25, 42209), (31, 42272),

Gene: Schmidt_68 Start: 41038, Stop: 41190, Start Num: 16

Candidate Starts for Schmidt_68:

(12, 40996), (Start: 16 @41038 has 6 MA's), (20, 41071), (25, 41098),

Gene: Splinter_71 Start: 43231, Stop: 43383, Start Num: 16

Candidate Starts for Splinter_71:

(6, 43096), (8, 43129), (Start: 15 @43228 has 5 MA's), (Start: 16 @43231 has 6 MA's), (20, 43264), (24, 43288), (25, 43291), (30, 43336), (31, 43354),

Gene: TZGordon_72 Start: 42116, Stop: 42268, Start Num: 15

Candidate Starts for TZGordon_72:

(Start: 15 @42116 has 5 MA's), (Start: 16 @42119 has 6 MA's), (20, 42149), (24, 42173), (25, 42176), (31, 42239),

Gene: TinaLin_70 Start: 41791, Stop: 41943, Start Num: 16

Candidate Starts for TinaLin_70:

(6, 41656), (8, 41689), (Start: 15 @41788 has 5 MA's), (Start: 16 @41791 has 6 MA's), (20, 41824), (28, 41884), (29, 41890), (31, 41914),

Gene: Vendetta_71 Start: 43231, Stop: 43383, Start Num: 16

Candidate Starts for Vendetta_71:

(6, 43096), (8, 43129), (Start: 15 @43228 has 5 MA's), (Start: 16 @43231 has 6 MA's), (20, 43264), (24, 43288), (25, 43291), (30, 43336), (31, 43354),