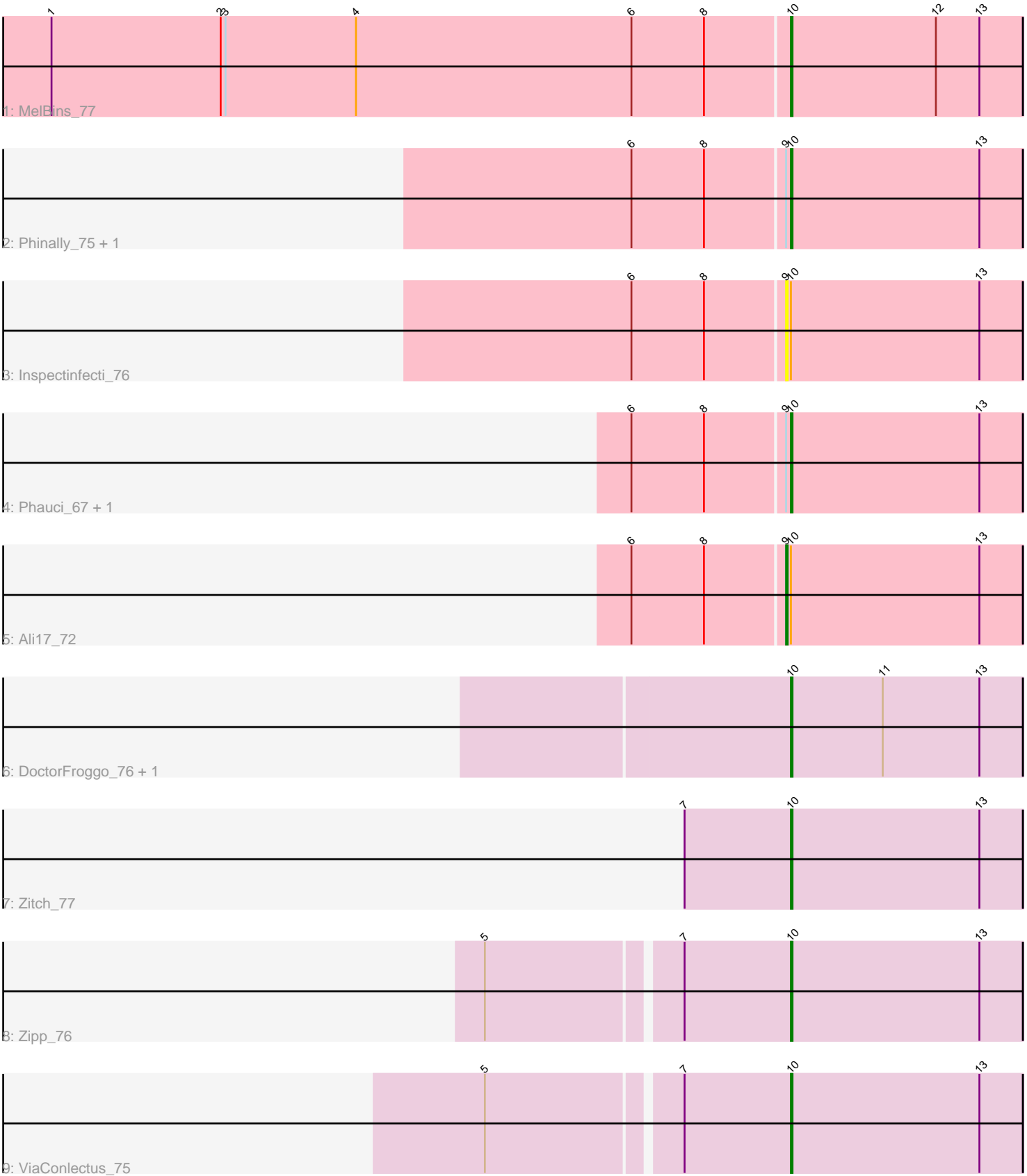


Pham 5143



Note: Tracks are now grouped by subcluster and scaled. Switching in subcluster is indicated by changes in track color. Track scale is now set by default to display the region 30 bp upstream of start 1 to 30 bp downstream of the last possible start. If this default region is judged to be packed too tightly with annotated starts, the track will be further scaled to only show that region of the ORF with annotated starts. This action will be indicated by adding "Zoomed" to the title. For starts, yellow indicates the location of called starts comprised solely of Glimmer/GeneMark auto-annotations, green indicates the location of called starts with at least 1 manual gene annotation.

Pham 5143 Report

This analysis was run 04/28/24 on database version 559.

Pham number 5143 has 12 members, 1 are drafts.

Phages represented in each track:

- Track 1 : MelBins_77
- Track 2 : Phinally_75, Leonard_75
- Track 3 : Inspectinfecti_76
- Track 4 : Phauci_67, Hans_76
- Track 5 : Ali17_72
- Track 6 : DoctorFroggo_76, Delrey21_76
- Track 7 : Zitch_77
- Track 8 : Zipp_76
- Track 9 : ViaConlectus_75

Summary of Final Annotations (See graph section above for start numbers):

The start number called the most often in the published annotations is 10, it was called in 10 of the 11 non-draft genes in the pham.

Genes that call this "Most Annotated" start:

- Delrey21_76, DoctorFroggo_76, Hans_76, Leonard_75, MelBins_77, Phauci_67, Phinally_75, ViaConlectus_75, Zipp_76, Zitch_77,

Genes that have the "Most Annotated" start but do not call it:

- Ali17_72, Inspectinfecti_76,

Genes that do not have the "Most Annotated" start:

-

Summary by start number:

Start 9:

- Found in 6 of 12 (50.0%) of genes in pham
- Manual Annotations of this start: 1 of 11
- Called 33.3% of time when present
- Phage (with cluster) where this start called: Ali17_72 (DE2), Inspectinfecti_76 (DE2),

Start 10:

- Found in 12 of 12 (100.0%) of genes in pham
- Manual Annotations of this start: 10 of 11
- Called 83.3% of time when present
- Phage (with cluster) where this start called: Delrey21_76 (DE4), DoctorFroggo_76 (DE4), Hans_76 (DE2), Leonard_75 (DE2), MelBins_77 (DE2), Phauci_67 (DE2), Phinally_75 (DE2), ViaConlectus_75 (DE4), Zipp_76 (DE4), Zitch_77 (DE4),

Summary by clusters:

There are 2 clusters represented in this pham: DE2, DE4,

Info for manual annotations of cluster DE2:

- Start number 9 was manually annotated 1 time for cluster DE2.
- Start number 10 was manually annotated 5 times for cluster DE2.

Info for manual annotations of cluster DE4:

- Start number 10 was manually annotated 5 times for cluster DE4.

Gene Information:

Gene: Ali17_72 Start: 53563, Stop: 53709, Start Num: 9

Candidate Starts for Ali17_72:

(6, 53470), (8, 53515), (Start: 9 @53563 has 1 MA's), (Start: 10 @53566 has 10 MA's), (13, 53683),

Gene: Delrey21_76 Start: 55979, Stop: 56122, Start Num: 10

Candidate Starts for Delrey21_76:

(Start: 10 @55979 has 10 MA's), (11, 56036), (13, 56096),

Gene: DoctorFroggo_76 Start: 55979, Stop: 56122, Start Num: 10

Candidate Starts for DoctorFroggo_76:

(Start: 10 @55979 has 10 MA's), (11, 56036), (13, 56096),

Gene: Hans_76 Start: 54493, Stop: 54636, Start Num: 10

Candidate Starts for Hans_76:

(6, 54397), (8, 54442), (Start: 9 @54490 has 1 MA's), (Start: 10 @54493 has 10 MA's), (13, 54610),

Gene: Inspectinfecti_76 Start: 54464, Stop: 54610, Start Num: 9

Candidate Starts for Inspectinfecti_76:

(6, 54371), (8, 54416), (Start: 9 @54464 has 1 MA's), (Start: 10 @54467 has 10 MA's), (13, 54584),

Gene: Leonard_75 Start: 54530, Stop: 54673, Start Num: 10

Candidate Starts for Leonard_75:

(6, 54434), (8, 54479), (Start: 9 @54527 has 1 MA's), (Start: 10 @54530 has 10 MA's), (13, 54647),

Gene: MelBins_77 Start: 54735, Stop: 54878, Start Num: 10

Candidate Starts for MelBins_77:

(1, 54279), (2, 54384), (3, 54387), (4, 54468), (6, 54639), (8, 54684), (Start: 10 @54735 has 10 MA's), (12, 54825), (13, 54852),

Gene: Phauci_67 Start: 51570, Stop: 51713, Start Num: 10

Candidate Starts for Phauci_67:

(6, 51474), (8, 51519), (Start: 9 @51567 has 1 MA's), (Start: 10 @51570 has 10 MA's), (13, 51687),

Gene: Phinally_75 Start: 54527, Stop: 54670, Start Num: 10

Candidate Starts for Phinally_75:

(6, 54431), (8, 54476), (Start: 9 @54524 has 1 MA's), (Start: 10 @54527 has 10 MA's), (13, 54644),

Gene: ViaConlectus_75 Start: 53134, Stop: 53277, Start Num: 10

Candidate Starts for ViaConlectus_75:

(5, 52954), (7, 53068), (Start: 10 @53134 has 10 MA's), (13, 53251),

Gene: Zipp_76 Start: 55561, Stop: 55704, Start Num: 10

Candidate Starts for Zipp_76:

(5, 55381), (7, 55495), (Start: 10 @55561 has 10 MA's), (13, 55678),

Gene: Zitch_77 Start: 54011, Stop: 54154, Start Num: 10

Candidate Starts for Zitch_77:

(7, 53945), (Start: 10 @54011 has 10 MA's), (13, 54128),