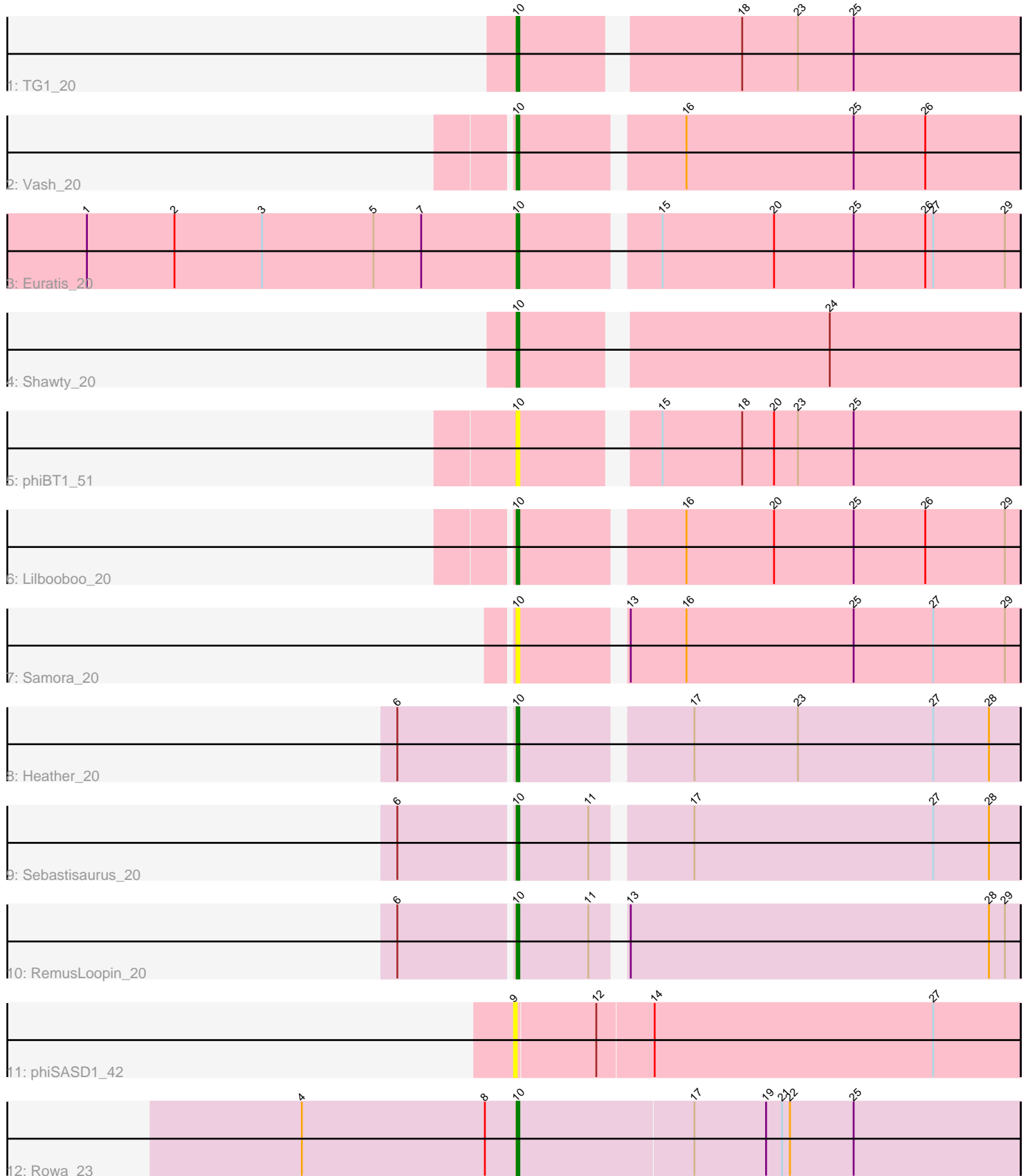


Pham 5145



Note: Tracks are now grouped by subcluster and scaled. Switching in subcluster is indicated by changes in track color. Track scale is now set by default to display the region 30 bp upstream of start 1 to 30 bp downstream of the last possible start. If this default region is judged to be packed too tightly with annotated starts, the track will be further scaled to only show that region of the ORF with annotated starts. This action will be indicated by adding "Zoomed" to the title. For starts, yellow indicates the location of called starts comprised solely of Glimmer/GeneMark auto-annotations, green indicates the location of called starts with at least 1 manual gene annotation.

Pham 5145 Report

This analysis was run 04/28/24 on database version 559.

WARNING: Pham size does not match number of genes in report. Either unphamerated genes have been added (by you) or starterator has removed genes due to invalid start codon.

Pham number 5145 has 12 members, 3 are drafts.

Phages represented in each track:

- Track 1 : TG1_20
- Track 2 : Vash_20
- Track 3 : Euratis_20
- Track 4 : Shawty_20
- Track 5 : phiBT1_51
- Track 6 : Lilbooboo_20
- Track 7 : Samora_20
- Track 8 : Heather_20
- Track 9 : Sebastisaurus_20
- Track 10 : RemusLoopin_20
- Track 11 : phiSASD1_42
- Track 12 : Rowa_23

Summary of Final Annotations (See graph section above for start numbers):

The start number called the most often in the published annotations is 10, it was called in 9 of the 9 non-draft genes in the pham.

Genes that call this "Most Annotated" start:

- Euratis_20, Heather_20, Lilbooboo_20, RemusLoopin_20, Rowa_23, Samora_20, Sebastisaurus_20, Shawty_20, TG1_20, Vash_20, phiBT1_51,

Genes that have the "Most Annotated" start but do not call it:

-

Genes that do not have the "Most Annotated" start:

- phiSASD1_42,

Summary by start number:

Start 9:

- Found in 1 of 12 (8.3%) of genes in pham
- No Manual Annotations of this start.
- Called 100.0% of time when present
- Phage (with cluster) where this start called: phiSASD1_42 (BJ),

Start 10:

- Found in 11 of 12 (91.7%) of genes in pham
- Manual Annotations of this start: 9 of 9
- Called 100.0% of time when present
- Phage (with cluster) where this start called: Euratis_20 (BB1), Heather_20 (BB2), Lilbooboo_20 (BB1), RemusLoopin_20 (BB2), Rowa_23 (BL), Samora_20 (BB1), Sebastisaurus_20 (BB2), Shawty_20 (BB1), TG1_20 (BB1), Vash_20 (BB1), phiBT1_51 (BB1),

Summary by clusters:

There are 4 clusters represented in this pham: BL, BJ, BB2, BB1,

Info for manual annotations of cluster BB1:

- Start number 10 was manually annotated 5 times for cluster BB1.

Info for manual annotations of cluster BB2:

- Start number 10 was manually annotated 3 times for cluster BB2.

Info for manual annotations of cluster BL:

- Start number 10 was manually annotated 1 time for cluster BL.

Gene Information:

Gene: Euratis_20 Start: 17090, Stop: 17272, Start Num: 10

Candidate Starts for Euratis_20:

(1, 16928), (2, 16961), (3, 16994), (5, 17036), (7, 17054), (Start: 10 @17090 has 9 MA's), (15, 17138), (20, 17180), (25, 17210), (26, 17237), (27, 17240), (29, 17267),

Gene: Heather_20 Start: 16658, Stop: 16840, Start Num: 10

Candidate Starts for Heather_20:

(6, 16616), (Start: 10 @16658 has 9 MA's), (17, 16718), (23, 16757), (27, 16808), (28, 16829),

Gene: Lilbooboo_20 Start: 17297, Stop: 17479, Start Num: 10

Candidate Starts for Lilbooboo_20:

(Start: 10 @17297 has 9 MA's), (16, 17354), (20, 17387), (25, 17417), (26, 17444), (29, 17474),

Gene: RemusLoopin_20 Start: 17004, Stop: 17186, Start Num: 10

Candidate Starts for RemusLoopin_20:

(6, 16962), (Start: 10 @17004 has 9 MA's), (11, 17031), (13, 17040), (28, 17175), (29, 17181),

Gene: Rowa_23 Start: 18503, Stop: 18691, Start Num: 10

Candidate Starts for Rowa_23:

(4, 18422), (8, 18491), (Start: 10 @18503 has 9 MA's), (17, 18569), (19, 18596), (21, 18602), (22, 18605), (25, 18629),

Gene: Samora_20 Start: 17428, Stop: 17610, Start Num: 10

Candidate Starts for Samora_20:

(Start: 10 @17428 has 9 MA's), (13, 17464), (16, 17485), (25, 17548), (27, 17578), (29, 17605),

Gene: Sebastisaurus_20 Start: 17035, Stop: 17217, Start Num: 10

Candidate Starts for Sebastisaurus_20:

(6, 16993), (Start: 10 @17035 has 9 MA's), (11, 17062), (17, 17095), (27, 17185), (28, 17206),

Gene: Shawty_20 Start: 17088, Stop: 17267, Start Num: 10

Candidate Starts for Shawty_20:

(Start: 10 @17088 has 9 MA's), (24, 17196),

Gene: TG1_20 Start: 16611, Stop: 16790, Start Num: 10

Candidate Starts for TG1_20:

(Start: 10 @16611 has 9 MA's), (18, 16686), (23, 16707), (25, 16728),

Gene: Vash_20 Start: 17098, Stop: 17280, Start Num: 10

Candidate Starts for Vash_20:

(Start: 10 @17098 has 9 MA's), (16, 17155), (25, 17218), (26, 17245),

Gene: phiBT1_51 Start: 17521, Stop: 17700, Start Num: 10

Candidate Starts for phiBT1_51:

(Start: 10 @17521 has 9 MA's), (15, 17566), (18, 17596), (20, 17608), (23, 17617), (25, 17638),

Gene: phiSASD1_42 Start: 17697, Stop: 17885, Start Num: 9

Candidate Starts for phiSASD1_42:

(9, 17697), (12, 17727), (14, 17748), (27, 17853),