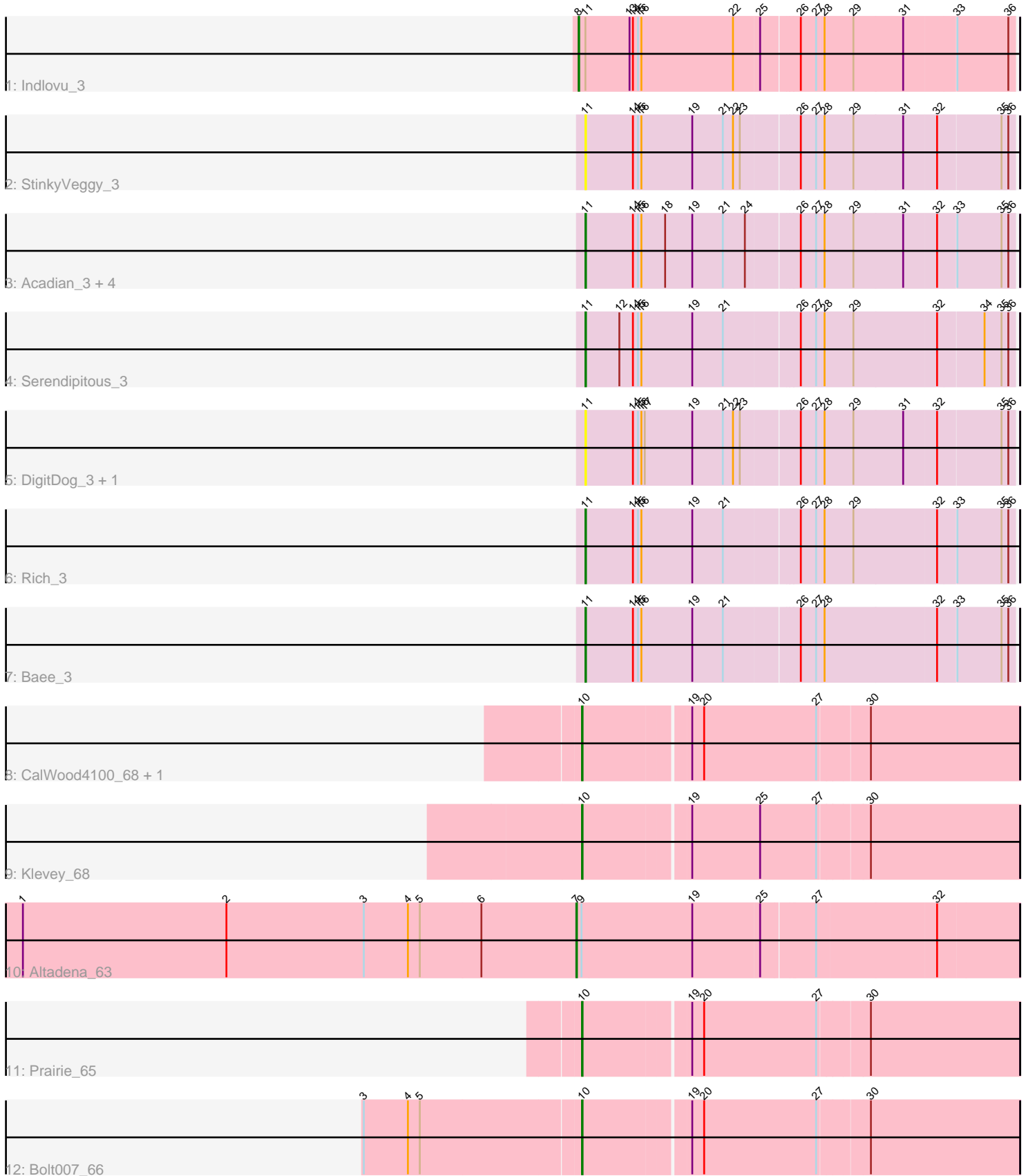


Pham 5376



Note: Tracks are now grouped by subcluster and scaled. Switching in subcluster is indicated by changes in track color. Track scale is now set by default to display the region 30 bp upstream of start 1 to 30 bp downstream of the last possible start. If this default region is judged to be packed too tightly with annotated starts, the track will be further scaled to only show that region of the ORF with annotated starts. This action will be indicated by adding "Zoomed" to the title. For starts, yellow indicates the location of called starts comprised solely of Glimmer/GeneMark auto-annotations, green indicates the location of called starts with at least 1 manual gene annotation.

## Pham 5376 Report

This analysis was run 07/09/24 on database version 566.

Pham number 5376 has 18 members, 6 are drafts.

Phages represented in each track:

- Track 1 : Indlovu\_3
- Track 2 : StinkyVeggy\_3
- Track 3 : Acadian\_3, Donny\_3, SirJeffery\_3, Suigeneris\_3, EastView9101\_3
- Track 4 : Serendipitous\_3
- Track 5 : DigitDog\_3, Nangang\_3
- Track 6 : Rich\_3
- Track 7 : Bae\_3
- Track 8 : CalWood4100\_68, Lilmac1015\_68
- Track 9 : Klevey\_68
- Track 10 : Altadena\_63
- Track 11 : Prairie\_65
- Track 12 : Bolt007\_66

### ***Summary of Final Annotations (See graph section above for start numbers):***

The start number called the most often in the published annotations is 11, it was called in 6 of the 12 non-draft genes in the pham.

Genes that call this "Most Annotated" start:

- Acadian\_3, Bae\_3, DigitDog\_3, Donny\_3, EastView9101\_3, Nangang\_3, Rich\_3, Serendipitous\_3, SirJeffery\_3, StinkyVeggy\_3, Suigeneris\_3,

Genes that have the "Most Annotated" start but do not call it:

- Indlovu\_3,

Genes that do not have the "Most Annotated" start:

- Altadena\_63, Bolt007\_66, CalWood4100\_68, Klevey\_68, Lilmac1015\_68, Prairie\_65,

### **Summary by start number:**

Start 7:

- Found in 1 of 18 ( 5.6% ) of genes in pham
- Manual Annotations of this start: 1 of 12

- Called 100.0% of time when present
- Phage (with cluster) where this start called: Altadena\_63 (FH),

Start 8:

- Found in 1 of 18 ( 5.6% ) of genes in pham
- Manual Annotations of this start: 1 of 12
- Called 100.0% of time when present
- Phage (with cluster) where this start called: Indlovu\_3 (B11),

Start 10:

- Found in 5 of 18 ( 27.8% ) of genes in pham
- Manual Annotations of this start: 4 of 12
- Called 100.0% of time when present
- Phage (with cluster) where this start called: Bolt007\_66 (FH), CalWood4100\_68 (FH), Klevey\_68 (FH), Lilmac1015\_68 (FH), Prairie\_65 (FH),

Start 11:

- Found in 12 of 18 ( 66.7% ) of genes in pham
- Manual Annotations of this start: 6 of 12
- Called 91.7% of time when present
- Phage (with cluster) where this start called: Acadian\_3 (B5), Bae\_3 (B5), DigitDog\_3 (B5), Donny\_3 (B5), EastView9101\_3 (B5), Nangang\_3 (B5), Rich\_3 (B5), Serendipitous\_3 (B5), SirJeffery\_3 (B5), StinkyVeggy\_3 (B5), Suigeneris\_3 (B5),

### **Summary by clusters:**

There are 3 clusters represented in this pham: FH, B5, B11,

Info for manual annotations of cluster B11:

- Start number 8 was manually annotated 1 time for cluster B11.

Info for manual annotations of cluster B5:

- Start number 11 was manually annotated 6 times for cluster B5.

Info for manual annotations of cluster FH:

- Start number 7 was manually annotated 1 time for cluster FH.
- Start number 10 was manually annotated 4 times for cluster FH.

### **Gene Information:**

Gene: Acadian\_3 Start: 1707, Stop: 2441, Start Num: 11

Candidate Starts for Acadian\_3:

(Start: 11 @1707 has 6 MA's), (14, 1791), (15, 1800), (16, 1806), (18, 1848), (19, 1896), (21, 1950), (24, 1989), (26, 2076), (27, 2103), (28, 2115), (29, 2166), (31, 2253), (32, 2310), (33, 2340), (35, 2418), (36, 2430),

Gene: Altadena\_63 Start: 40716, Stop: 41474, Start Num: 7

Candidate Starts for Altadena\_63:

(1, 39738), (2, 40098), (3, 40341), (4, 40419), (5, 40440), (6, 40548), (Start: 7 @40716 has 1 MA's), (9, 40725), (19, 40920), (25, 41037), (27, 41127), (32, 41334),

Gene: Bae\_3 Start: 1713, Stop: 2447, Start Num: 11

Candidate Starts for Bae\_3:

(Start: 11 @1713 has 6 MA's), (14, 1797), (15, 1806), (16, 1812), (19, 1902), (21, 1956), (26, 2082), (27, 2109), (28, 2121), (32, 2316), (33, 2346), (35, 2424), (36, 2436),

Gene: Bolt007\_66 Start: 42929, Stop: 43672, Start Num: 10

Candidate Starts for Bolt007\_66:

(3, 42554), (4, 42632), (5, 42653), (Start: 10 @42929 has 4 MA's), (19, 43106), (20, 43127), (27, 43325), (30, 43409),

Gene: CalWood4100\_68 Start: 42900, Stop: 43643, Start Num: 10

Candidate Starts for CalWood4100\_68:

(Start: 10 @42900 has 4 MA's), (19, 43077), (20, 43098), (27, 43296), (30, 43380),

Gene: DigitDog\_3 Start: 1698, Stop: 2432, Start Num: 11

Candidate Starts for DigitDog\_3:

(Start: 11 @1698 has 6 MA's), (14, 1782), (15, 1791), (16, 1797), (17, 1803), (19, 1887), (21, 1941), (22, 1959), (23, 1971), (26, 2067), (27, 2094), (28, 2106), (29, 2157), (31, 2244), (32, 2301), (35, 2409), (36, 2421),

Gene: Donny\_3 Start: 1707, Stop: 2441, Start Num: 11

Candidate Starts for Donny\_3:

(Start: 11 @1707 has 6 MA's), (14, 1791), (15, 1800), (16, 1806), (18, 1848), (19, 1896), (21, 1950), (24, 1989), (26, 2076), (27, 2103), (28, 2115), (29, 2166), (31, 2253), (32, 2310), (33, 2340), (35, 2418), (36, 2430),

Gene: EastView9101\_3 Start: 1707, Stop: 2441, Start Num: 11

Candidate Starts for EastView9101\_3:

(Start: 11 @1707 has 6 MA's), (14, 1791), (15, 1800), (16, 1806), (18, 1848), (19, 1896), (21, 1950), (24, 1989), (26, 2076), (27, 2103), (28, 2115), (29, 2166), (31, 2253), (32, 2310), (33, 2340), (35, 2418), (36, 2430),

Gene: Indlovu\_3 Start: 1727, Stop: 2473, Start Num: 8

Candidate Starts for Indlovu\_3:

(Start: 8 @1727 has 1 MA's), (Start: 11 @1739 has 6 MA's), (13, 1817), (14, 1823), (15, 1832), (16, 1838), (22, 2000), (25, 2045), (26, 2108), (27, 2135), (28, 2147), (29, 2198), (31, 2285), (33, 2372), (36, 2462),

Gene: Klevey\_68 Start: 42837, Stop: 43580, Start Num: 10

Candidate Starts for Klevey\_68:

(Start: 10 @42837 has 4 MA's), (19, 43014), (25, 43134), (27, 43233), (30, 43317),

Gene: Lilmac1015\_68 Start: 42900, Stop: 43643, Start Num: 10

Candidate Starts for Lilmac1015\_68:

(Start: 10 @42900 has 4 MA's), (19, 43077), (20, 43098), (27, 43296), (30, 43380),

Gene: Nangang\_3 Start: 1698, Stop: 2432, Start Num: 11

Candidate Starts for Nangang\_3:

(Start: 11 @1698 has 6 MA's), (14, 1782), (15, 1791), (16, 1797), (17, 1803), (19, 1887), (21, 1941), (22, 1959), (23, 1971), (26, 2067), (27, 2094), (28, 2106), (29, 2157), (31, 2244), (32, 2301), (35, 2409), (36, 2421),

Gene: Prairie\_65 Start: 42352, Stop: 43095, Start Num: 10

Candidate Starts for Prairie\_65:

(Start: 10 @42352 has 4 MA's), (19, 42529), (20, 42550), (27, 42748), (30, 42832),

Gene: Rich\_3 Start: 1710, Stop: 2444, Start Num: 11

Candidate Starts for Rich\_3:

(Start: 11 @1710 has 6 MA's), (14, 1794), (15, 1803), (16, 1809), (19, 1899), (21, 1953), (26, 2079), (27, 2106), (28, 2118), (29, 2169), (32, 2313), (33, 2343), (35, 2421), (36, 2433),

Gene: Serendipitous\_3 Start: 1773, Stop: 2507, Start Num: 11

Candidate Starts for Serendipitous\_3:

(Start: 11 @1773 has 6 MA's), (12, 1833), (14, 1857), (15, 1866), (16, 1872), (19, 1962), (21, 2016), (26, 2142), (27, 2169), (28, 2181), (29, 2232), (32, 2376), (34, 2454), (35, 2484), (36, 2496),

Gene: SirJeffery\_3 Start: 1707, Stop: 2441, Start Num: 11

Candidate Starts for SirJeffery\_3:

(Start: 11 @1707 has 6 MA's), (14, 1791), (15, 1800), (16, 1806), (18, 1848), (19, 1896), (21, 1950), (24, 1989), (26, 2076), (27, 2103), (28, 2115), (29, 2166), (31, 2253), (32, 2310), (33, 2340), (35, 2418), (36, 2430),

Gene: StinkyVeggy\_3 Start: 1698, Stop: 2432, Start Num: 11

Candidate Starts for StinkyVeggy\_3:

(Start: 11 @1698 has 6 MA's), (14, 1782), (15, 1791), (16, 1797), (19, 1887), (21, 1941), (22, 1959), (23, 1971), (26, 2067), (27, 2094), (28, 2106), (29, 2157), (31, 2244), (32, 2301), (35, 2409), (36, 2421),

Gene: Suigeneris\_3 Start: 1707, Stop: 2441, Start Num: 11

Candidate Starts for Suigeneris\_3:

(Start: 11 @1707 has 6 MA's), (14, 1791), (15, 1800), (16, 1806), (18, 1848), (19, 1896), (21, 1950), (24, 1989), (26, 2076), (27, 2103), (28, 2115), (29, 2166), (31, 2253), (32, 2310), (33, 2340), (35, 2418), (36, 2430),