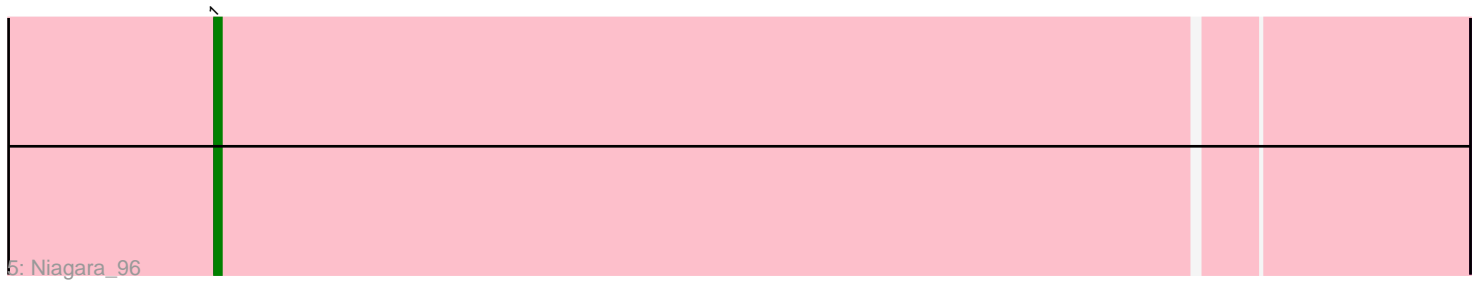
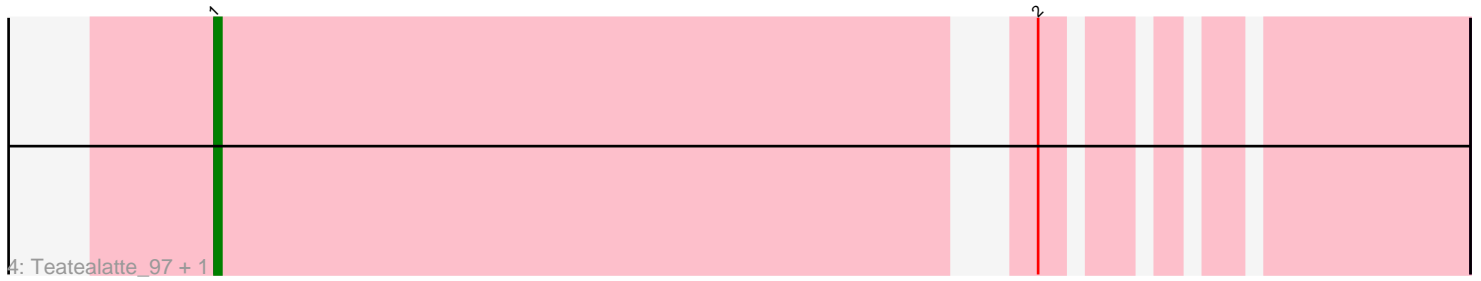
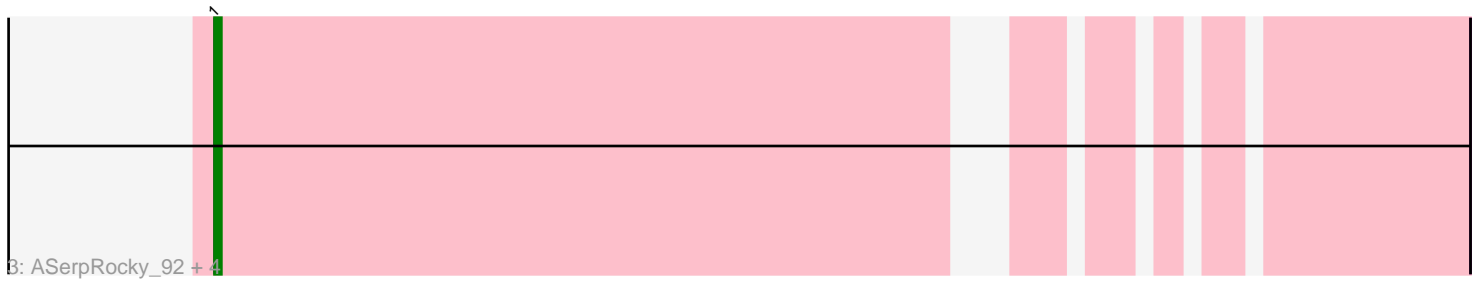
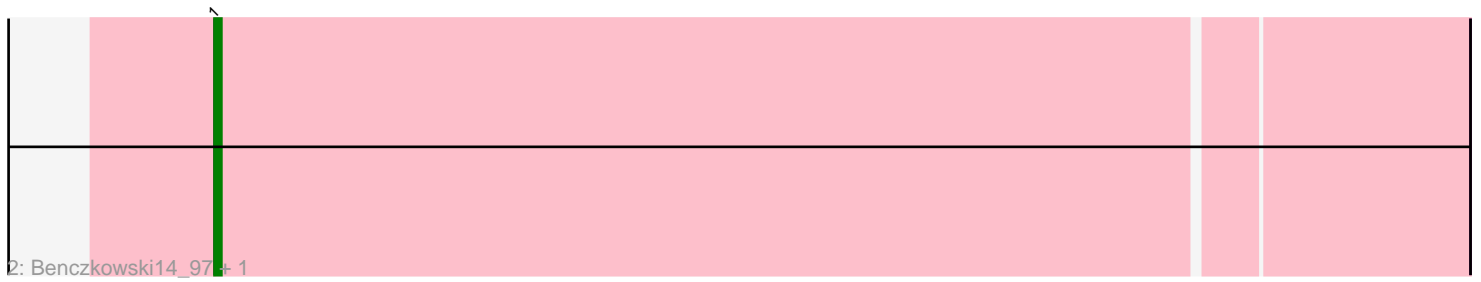
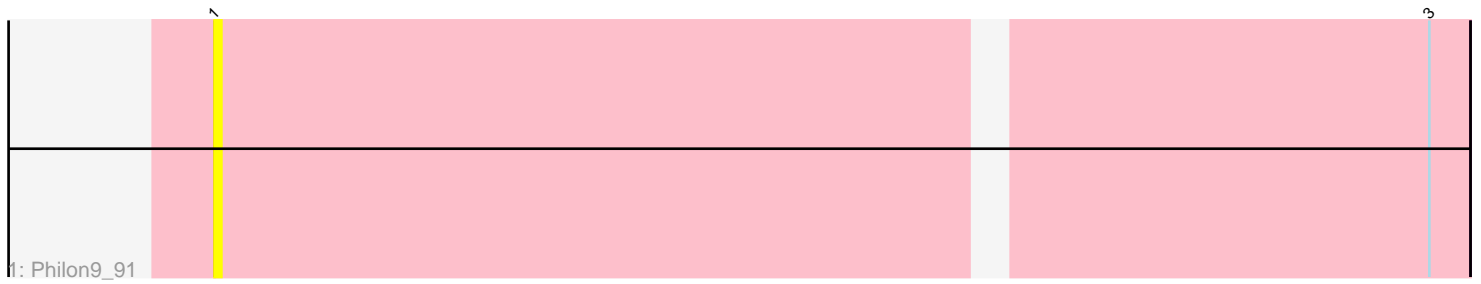


## Pham 5590



Note: Tracks are now grouped by subcluster and scaled. Switching in subcluster is indicated by changes in track color. Track scale is now set by default to display the region 30 bp upstream of start 1 to 30 bp downstream of the last possible start. If this default region is judged to be packed too tightly with annotated starts, the track will be further scaled to only show that region of the ORF with annotated starts. This action will be indicated by adding "Zoomed" to the title. For starts, yellow indicates the location of called starts comprised solely of Glimmer/GeneMark auto-annotations, green indicates the location of called starts with at least 1 manual gene annotation.

## Pham 5590 Report

This analysis was run 04/28/24 on database version 559.

Pham number 5590 has 11 members, 2 are drafts.

Phages represented in each track:

- Track 1 : Philon9\_91
- Track 2 : Benczkowski14\_97, Katyusha\_95
- Track 3 : ASerpRocky\_92, Demosthenes\_92, Kvothe\_96, Teech\_94, Hollow\_97
- Track 4 : Teatealatte\_97, Tredge\_96
- Track 5 : Niagara\_96

### ***Summary of Final Annotations (See graph section above for start numbers):***

The start number called the most often in the published annotations is 1, it was called in 9 of the 9 non-draft genes in the pham.

Genes that call this "Most Annotated" start:

- ASerpRocky\_92, Benczkowski14\_97, Demosthenes\_92, Hollow\_97, Katyusha\_95, Kvothe\_96, Niagara\_96, Philon9\_91, Teatealatte\_97, Teech\_94, Tredge\_96,

Genes that have the "Most Annotated" start but do not call it:

- 

Genes that do not have the "Most Annotated" start:

- 

### **Summary by start number:**

Start 1:

- Found in 11 of 11 ( 100.0% ) of genes in pham
- Manual Annotations of this start: 9 of 9
- Called 100.0% of time when present
- Phage (with cluster) where this start called: ASerpRocky\_92 (CS4), Benczkowski14\_97 (CS4), Demosthenes\_92 (CS4), Hollow\_97 (CS4), Katyusha\_95 (CS4), Kvothe\_96 (CS4), Niagara\_96 (CS4), Philon9\_91 (CS4), Teatealatte\_97 (CS4), Teech\_94 (CS4), Tredge\_96 (CS4),

### **Summary by clusters:**

There is one cluster represented in this pham: CS4

Info for manual annotations of cluster CS4:

- Start number 1 was manually annotated 9 times for cluster CS4.

**Gene Information:**

Gene: ASerpRocky\_92 Start: 72344, Stop: 72183, Start Num: 1

Candidate Starts for ASerpRocky\_92:

(Start: 1 @72344 has 9 MA's),

Gene: Benczkowski14\_97 Start: 73386, Stop: 73207, Start Num: 1

Candidate Starts for Benczkowski14\_97:

(Start: 1 @73386 has 9 MA's),

Gene: Demosthenes\_92 Start: 72094, Stop: 71933, Start Num: 1

Candidate Starts for Demosthenes\_92:

(Start: 1 @72094 has 9 MA's),

Gene: Hollow\_97 Start: 73416, Stop: 73255, Start Num: 1

Candidate Starts for Hollow\_97:

(Start: 1 @73416 has 9 MA's),

Gene: Katyusha\_95 Start: 73386, Stop: 73207, Start Num: 1

Candidate Starts for Katyusha\_95:

(Start: 1 @73386 has 9 MA's),

Gene: Kvothe\_96 Start: 73478, Stop: 73317, Start Num: 1

Candidate Starts for Kvothe\_96:

(Start: 1 @73478 has 9 MA's),

Gene: Niagara\_96 Start: 73313, Stop: 73134, Start Num: 1

Candidate Starts for Niagara\_96:

(Start: 1 @73313 has 9 MA's),

Gene: Philon9\_91 Start: 72662, Stop: 72486, Start Num: 1

Candidate Starts for Philon9\_91:

(Start: 1 @72662 has 9 MA's), (3, 72491),

Gene: Teatealatte\_97 Start: 73396, Stop: 73235, Start Num: 1

Candidate Starts for Teatealatte\_97:

(Start: 1 @73396 has 9 MA's), (2, 73285),

Gene: Teech\_94 Start: 73019, Stop: 72858, Start Num: 1

Candidate Starts for Teech\_94:

(Start: 1 @73019 has 9 MA's),

Gene: Tredge\_96 Start: 73396, Stop: 73235, Start Num: 1

Candidate Starts for Tredge\_96:

(Start: 1 @73396 has 9 MA's), (2, 73285),