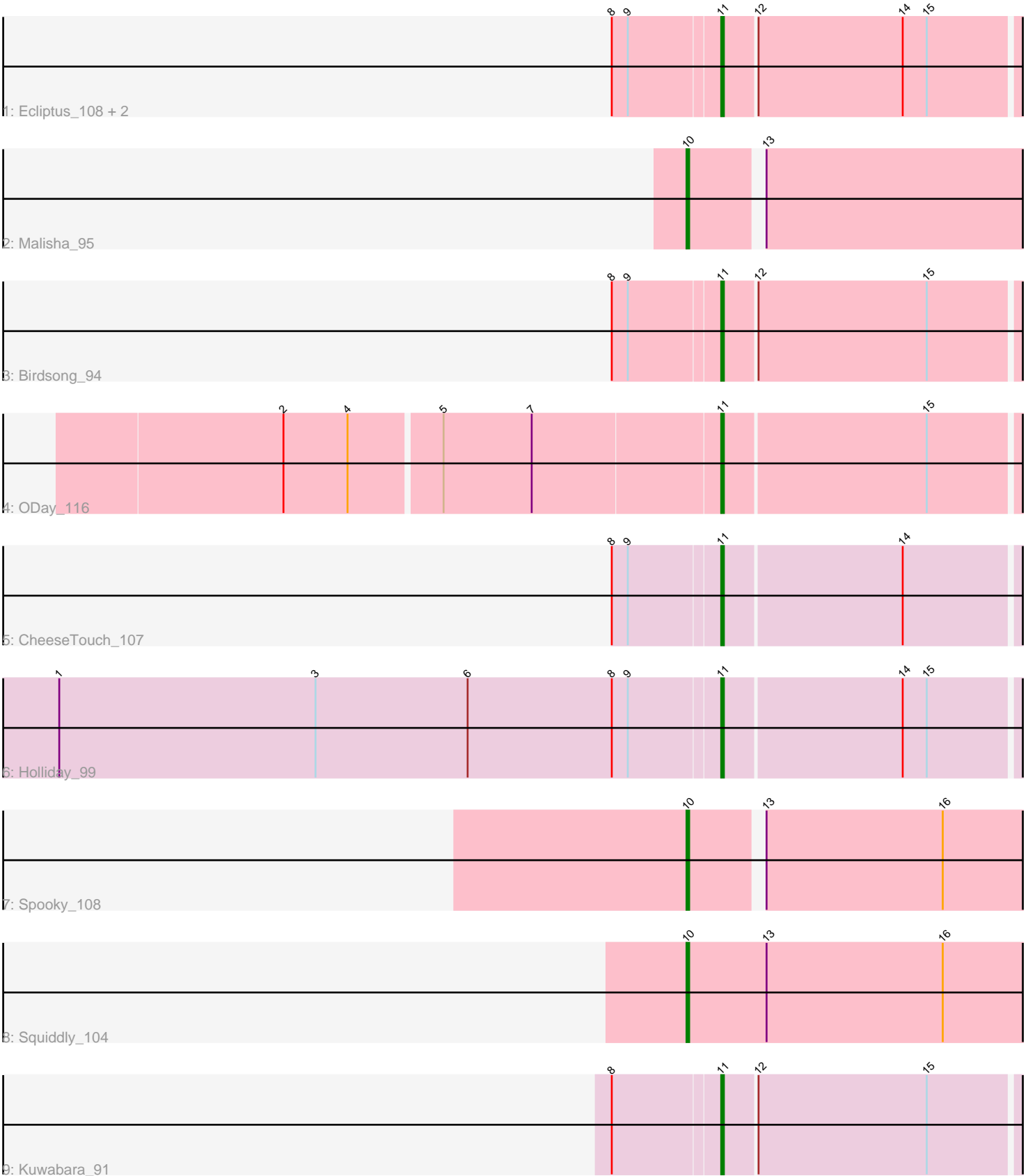


Pham 55928



Note: Tracks are now grouped by subcluster and scaled. Switching in subcluster is indicated by changes in track color. Track scale is now set by default to display the region 30 bp upstream of start 1 to 30 bp downstream of the last possible start. If this default region is judged to be packed too tightly with annotated starts, the track will be further scaled to only show that region of the ORF with annotated starts. This action will be indicated by adding "Zoomed" to the title. For starts, yellow indicates the location of called starts comprised solely of Glimmer/GeneMark auto-annotations, green indicates the location of called starts with at least 1 manual gene annotation.

Pham 55928 Report

This analysis was run 04/28/24 on database version 559.

Pham number 55928 has 11 members, 0 are drafts.

Phages represented in each track:

- Track 1 : Ecliptus_108, BearBQ_100, Phabuloso_107
- Track 2 : Malisha_95
- Track 3 : Birdsong_94
- Track 4 : ODay_116
- Track 5 : CheeseTouch_107
- Track 6 : Holliday_99
- Track 7 : Spooky_108
- Track 8 : Squiddly_104
- Track 9 : Kuwabara_91

Summary of Final Annotations (See graph section above for start numbers):

The start number called the most often in the published annotations is 11, it was called in 8 of the 11 non-draft genes in the pham.

Genes that call this "Most Annotated" start:

- BearBQ_100, Birdsong_94, CheeseTouch_107, Ecliptus_108, Holliday_99, Kuwabara_91, ODay_116, Phabuloso_107,

Genes that have the "Most Annotated" start but do not call it:

-

Genes that do not have the "Most Annotated" start:

- Malisha_95, Spooky_108, Squiddly_104,

Summary by start number:

Start 10:

- Found in 3 of 11 (27.3%) of genes in pham
- Manual Annotations of this start: 3 of 11
- Called 100.0% of time when present
- Phage (with cluster) where this start called: Malisha_95 (DN), Spooky_108 (DN2), Squiddly_104 (DN2),

Start 11:

- Found in 8 of 11 (72.7%) of genes in pham
- Manual Annotations of this start: 8 of 11
- Called 100.0% of time when present
- Phage (with cluster) where this start called: BearBQ_100 (DN), Birdsong_94 (DN), CheeseTouch_107 (DN1), Ecliptus_108 (DN), Holliday_99 (DN1), Kuwabara_91 (DN4), ODay_116 (DN), Phabuloso_107 (DN1),

Summary by clusters:

There are 4 clusters represented in this pham: DN, DN4, DN1, DN2,

Info for manual annotations of cluster DN:

- Start number 10 was manually annotated 1 time for cluster DN.
- Start number 11 was manually annotated 4 times for cluster DN.

Info for manual annotations of cluster DN1:

- Start number 11 was manually annotated 3 times for cluster DN1.

Info for manual annotations of cluster DN2:

- Start number 10 was manually annotated 2 times for cluster DN2.

Info for manual annotations of cluster DN4:

- Start number 11 was manually annotated 1 time for cluster DN4.

Gene Information:

Gene: BearBQ_100 Start: 54365, Stop: 54496, Start Num: 11

Candidate Starts for BearBQ_100:

(8, 54326), (9, 54332), (Start: 11 @54365 has 8 MA's), (12, 54377), (14, 54431), (15, 54440),

Gene: Birdsong_94 Start: 52353, Stop: 52484, Start Num: 11

Candidate Starts for Birdsong_94:

(8, 52314), (9, 52320), (Start: 11 @52353 has 8 MA's), (12, 52365), (15, 52428),

Gene: CheeseTouch_107 Start: 52364, Stop: 52492, Start Num: 11

Candidate Starts for CheeseTouch_107:

(8, 52325), (9, 52331), (Start: 11 @52364 has 8 MA's), (14, 52430),

Gene: Ecliptus_108 Start: 55029, Stop: 55157, Start Num: 11

Candidate Starts for Ecliptus_108:

(8, 54990), (9, 54996), (Start: 11 @55029 has 8 MA's), (12, 55041), (14, 55095), (15, 55104),

Gene: Holliday_99 Start: 56027, Stop: 56155, Start Num: 11

Candidate Starts for Holliday_99:

(1, 55781), (3, 55877), (6, 55934), (8, 55988), (9, 55994), (Start: 11 @56027 has 8 MA's), (14, 56093), (15, 56102),

Gene: Kuwabara_91 Start: 53216, Stop: 53344, Start Num: 11

Candidate Starts for Kuwabara_91:

(8, 53177), (Start: 11 @53216 has 8 MA's), (12, 53228), (15, 53291),

Gene: Malisha_95 Start: 55061, Stop: 55201, Start Num: 10

Candidate Starts for Malisha_95:

(Start: 10 @55061 has 3 MA's), (13, 55085),

Gene: ODay_116 Start: 57962, Stop: 58090, Start Num: 11

Candidate Starts for ODay_116:

(2, 57803), (4, 57827), (5, 57860), (7, 57893), (Start: 11 @57962 has 8 MA's), (15, 58037),

Gene: Phabuloso_107 Start: 54489, Stop: 54620, Start Num: 11

Candidate Starts for Phabuloso_107:

(8, 54450), (9, 54456), (Start: 11 @54489 has 8 MA's), (12, 54501), (14, 54555), (15, 54564),

Gene: Spooky_108 Start: 56470, Stop: 56610, Start Num: 10

Candidate Starts for Spooky_108:

(Start: 10 @56470 has 3 MA's), (13, 56494), (16, 56560),

Gene: Squiddly_104 Start: 57111, Stop: 57257, Start Num: 10

Candidate Starts for Squiddly_104:

(Start: 10 @57111 has 3 MA's), (13, 57141), (16, 57207),