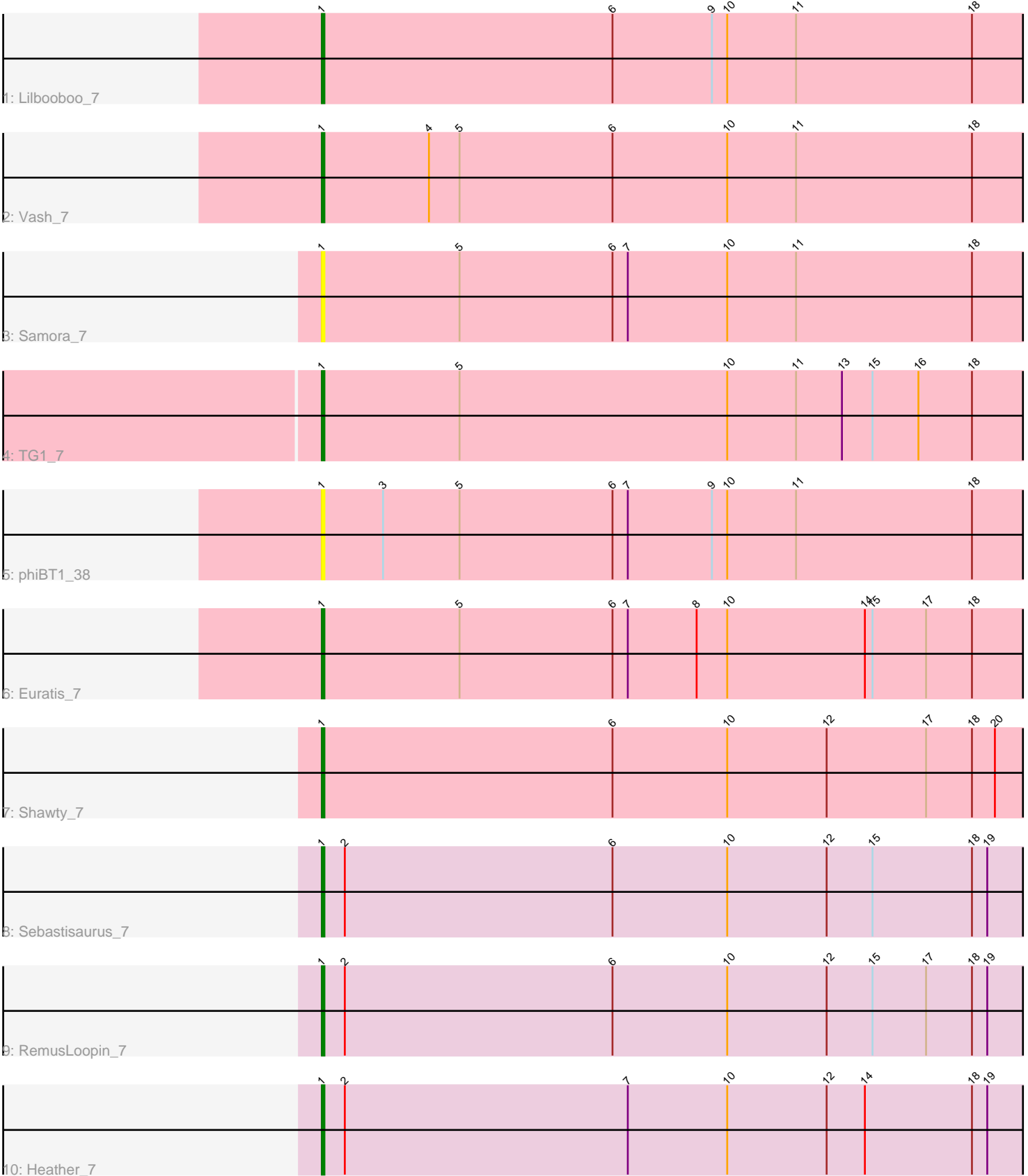


Zoomed Pham 5774



Note: Tracks are now grouped by subcluster and scaled. Switching in subcluster is indicated by changes in track color. Track scale is now set by default to display the region 30 bp upstream of start 1 to 30 bp downstream of the last possible start. If this default region is judged to be packed too tightly with annotated starts, the track will be further scaled to only show that region of the ORF with annotated starts. This action will be indicated by adding "Zoomed" to the title. For starts, yellow indicates the location of called starts comprised solely of Glimmer/GeneMark auto-annotations, green indicates the location of called starts with at least 1 manual gene annotation.

Pham 5774 Report

This analysis was run 04/28/24 on database version 559.

WARNING: Pham size does not match number of genes in report. Either unphamerated genes have been added (by you) or starterator has removed genes due to invalid start codon.

Pham number 5774 has 10 members, 2 are drafts.

Phages represented in each track:

- Track 1 : Lilbooboo_7
- Track 2 : Vash_7
- Track 3 : Samora_7
- Track 4 : TG1_7
- Track 5 : phiBT1_38
- Track 6 : Euratis_7
- Track 7 : Shawty_7
- Track 8 : Sebastisaurus_7
- Track 9 : RemusLoopin_7
- Track 10 : Heather_7

Summary of Final Annotations (See graph section above for start numbers):

The start number called the most often in the published annotations is 1, it was called in 8 of the 8 non-draft genes in the pham.

Genes that call this "Most Annotated" start:

- Euratis_7, Heather_7, Lilbooboo_7, RemusLoopin_7, Samora_7, Sebastisaurus_7, Shawty_7, TG1_7, Vash_7, phiBT1_38,

Genes that have the "Most Annotated" start but do not call it:

-

Genes that do not have the "Most Annotated" start:

-

Summary by start number:

Start 1:

- Found in 10 of 10 (100.0%) of genes in pham

- Manual Annotations of this start: 8 of 8
- Called 100.0% of time when present
- Phage (with cluster) where this start called: Euratis_7 (BB1), Heather_7 (BB2), Lilbooboo_7 (BB1), RemusLoopin_7 (BB2), Samora_7 (BB1), Sebastisaurus_7 (BB2), Shawty_7 (BB1), TG1_7 (BB1), Vash_7 (BB1), phiBT1_38 (BB1),

Summary by clusters:

There are 2 clusters represented in this pham: BB2, BB1,

Info for manual annotations of cluster BB1:

- Start number 1 was manually annotated 5 times for cluster BB1.

Info for manual annotations of cluster BB2:

- Start number 1 was manually annotated 3 times for cluster BB2.

Gene Information:

Gene: Euratis_7 Start: 5821, Stop: 6258, Start Num: 1

Candidate Starts for Euratis_7:

(Start: 1 @5821 has 8 MA's), (5, 5875), (6, 5935), (7, 5941), (8, 5968), (10, 5980), (14, 6034), (15, 6037), (17, 6058), (18, 6076), (21, 6097), (23, 6139), (29, 6247),

Gene: Heather_7 Start: 5847, Stop: 6278, Start Num: 1

Candidate Starts for Heather_7:

(Start: 1 @5847 has 8 MA's), (2, 5856), (7, 5967), (10, 6006), (12, 6045), (14, 6060), (18, 6102), (19, 6108), (22, 6144), (23, 6159),

Gene: Lilbooboo_7 Start: 5835, Stop: 6272, Start Num: 1

Candidate Starts for Lilbooboo_7:

(Start: 1 @5835 has 8 MA's), (6, 5949), (9, 5988), (10, 5994), (11, 6021), (18, 6090),

Gene: RemusLoopin_7 Start: 5830, Stop: 6261, Start Num: 1

Candidate Starts for RemusLoopin_7:

(Start: 1 @5830 has 8 MA's), (2, 5839), (6, 5944), (10, 5989), (12, 6028), (15, 6046), (17, 6067), (18, 6085), (19, 6091), (22, 6127), (23, 6142), (25, 6154),

Gene: Samora_7 Start: 5864, Stop: 6301, Start Num: 1

Candidate Starts for Samora_7:

(Start: 1 @5864 has 8 MA's), (5, 5918), (6, 5978), (7, 5984), (10, 6023), (11, 6050), (18, 6119), (21, 6140),

Gene: Sebastisaurus_7 Start: 5852, Stop: 6283, Start Num: 1

Candidate Starts for Sebastisaurus_7:

(Start: 1 @5852 has 8 MA's), (2, 5861), (6, 5966), (10, 6011), (12, 6050), (15, 6068), (18, 6107), (19, 6113), (22, 6149),

Gene: Shawty_7 Start: 5852, Stop: 6289, Start Num: 1

Candidate Starts for Shawty_7:

(Start: 1 @5852 has 8 MA's), (6, 5966), (10, 6011), (12, 6050), (17, 6089), (18, 6107), (20, 6116), (23, 6170), (24, 6179), (26, 6188), (27, 6260), (28, 6266), (29, 6278),

Gene: TG1_7 Start: 5841, Stop: 6278, Start Num: 1

Candidate Starts for TG1_7:

(Start: 1 @5841 has 8 MA's), (5, 5895), (10, 6000), (11, 6027), (13, 6045), (15, 6057), (16, 6075), (18, 6096), (21, 6117), (24, 6168),

Gene: Vash_7 Start: 5843, Stop: 6280, Start Num: 1

Candidate Starts for Vash_7:

(Start: 1 @5843 has 8 MA's), (4, 5885), (5, 5897), (6, 5957), (10, 6002), (11, 6029), (18, 6098), (21, 6119), (23, 6161),

Gene: phiBT1_38 Start: 5864, Stop: 6301, Start Num: 1

Candidate Starts for phiBT1_38:

(Start: 1 @5864 has 8 MA's), (3, 5888), (5, 5918), (6, 5978), (7, 5984), (9, 6017), (10, 6023), (11, 6050), (18, 6119), (21, 6140), (24, 6191), (26, 6200),