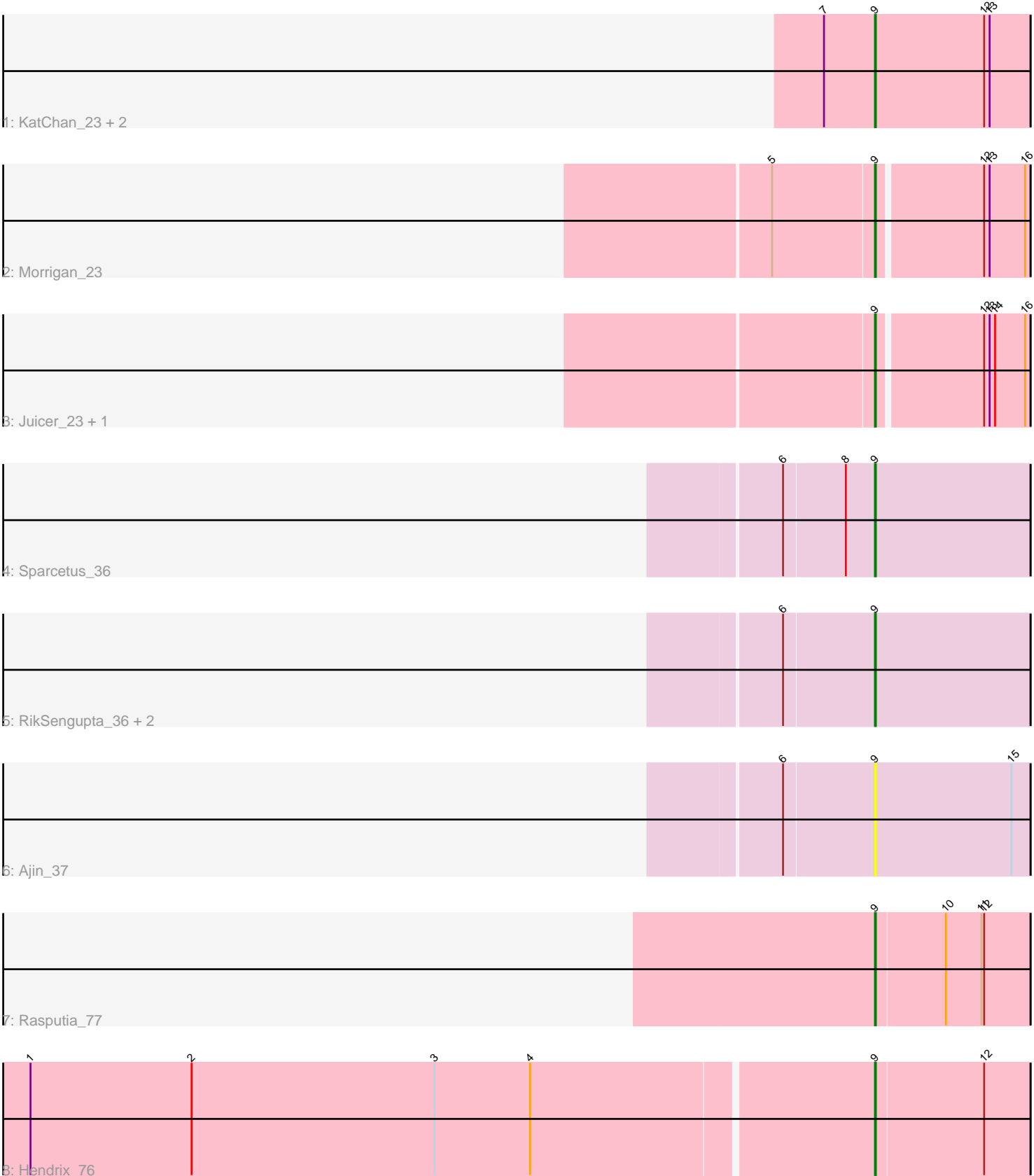


Pham 5775



Note: Tracks are now grouped by subcluster and scaled. Switching in subcluster is indicated by changes in track color. Track scale is now set by default to display the region 30 bp upstream of start 1 to 30 bp downstream of the last possible start. If this default region is judged to be packed too tightly with annotated starts, the track will be further scaled to only show that region of the ORF with annotated starts. This action will be indicated by adding "Zoomed" to the title. For starts, yellow indicates the location of called starts comprised solely of Glimmer/GeneMark auto-annotations, green indicates the location of called starts with at least 1 manual gene annotation.

Pham 5775 Report

This analysis was run 04/05/24 on database version 557.

Pham number 5775 has 13 members, 2 are drafts.

Phages represented in each track:

- Track 1 : KatChan_23, Luna18_23, Chepli_23
- Track 2 : Morrigan_23
- Track 3 : Juicer_23, Jemerald_23
- Track 4 : Sparcetus_36
- Track 5 : RikSengupta_36, Kors_37, TinyMiny_36
- Track 6 : Ajin_37
- Track 7 : Rasputia_77
- Track 8 : Hendrix_76

Summary of Final Annotations (See graph section above for start numbers):

The start number called the most often in the published annotations is 9, it was called in 11 of the 11 non-draft genes in the pham.

Genes that call this "Most Annotated" start:

- Ajin_37, Chepli_23, Hendrix_76, Jemerald_23, Juicer_23, KatChan_23, Kors_37, Luna18_23, Morrigan_23, Rasputia_77, RikSengupta_36, Sparcetus_36, TinyMiny_36,

Genes that have the "Most Annotated" start but do not call it:

-

Genes that do not have the "Most Annotated" start:

-

Summary by start number:

Start 9:

- Found in 13 of 13 (100.0%) of genes in pham
- Manual Annotations of this start: 11 of 11
- Called 100.0% of time when present
- Phage (with cluster) where this start called: Ajin_37 (EF), Chepli_23 (EA6), Hendrix_76 (GC), Jemerald_23 (EA6), Juicer_23 (EA6), KatChan_23 (EA6), Kors_37 (EF), Luna18_23 (EA6), Morrigan_23 (EA6), Rasputia_77 (GC), RikSengupta_36

(EF), Sparcetus_36 (EF), TinyMiny_36 (EF),

Summary by clusters:

There are 3 clusters represented in this pham: EF, GC, EA6,

Info for manual annotations of cluster EA6:

- Start number 9 was manually annotated 6 times for cluster EA6.

Info for manual annotations of cluster EF:

- Start number 9 was manually annotated 3 times for cluster EF.

Info for manual annotations of cluster GC:

- Start number 9 was manually annotated 2 times for cluster GC.

Gene Information:

Gene: Ajin_37 Start: 23199, Stop: 23369, Start Num: 9

Candidate Starts for Ajin_37:

(6, 23103), (Start: 9 @23199 has 11 MA's), (15, 23349),

Gene: Chepli_23 Start: 17241, Stop: 17411, Start Num: 9

Candidate Starts for Chepli_23:

(7, 17187), (Start: 9 @17241 has 11 MA's), (12, 17361), (13, 17367),

Gene: Hendrix_76 Start: 51794, Stop: 51961, Start Num: 9

Candidate Starts for Hendrix_76:

(1, 50879), (2, 51056), (3, 51323), (4, 51428), (Start: 9 @51794 has 11 MA's), (12, 51911),

Gene: Jemerald_23 Start: 18190, Stop: 18351, Start Num: 9

Candidate Starts for Jemerald_23:

(Start: 9 @18190 has 11 MA's), (12, 18301), (13, 18307), (14, 18313), (16, 18346),

Gene: Juicer_23 Start: 18190, Stop: 18351, Start Num: 9

Candidate Starts for Juicer_23:

(Start: 9 @18190 has 11 MA's), (12, 18301), (13, 18307), (14, 18313), (16, 18346),

Gene: KatChan_23 Start: 17247, Stop: 17417, Start Num: 9

Candidate Starts for KatChan_23:

(7, 17193), (Start: 9 @17247 has 11 MA's), (12, 17367), (13, 17373),

Gene: Kors_37 Start: 23245, Stop: 23415, Start Num: 9

Candidate Starts for Kors_37:

(6, 23149), (Start: 9 @23245 has 11 MA's),

Gene: Luna18_23 Start: 17247, Stop: 17417, Start Num: 9

Candidate Starts for Luna18_23:

(7, 17193), (Start: 9 @17247 has 11 MA's), (12, 17367), (13, 17373),

Gene: Morrigan_23 Start: 18143, Stop: 18304, Start Num: 9

Candidate Starts for Morrigan_23:

(5, 18035), (Start: 9 @18143 has 11 MA's), (12, 18254), (13, 18260), (16, 18299),

Gene: Rasputia_77 Start: 51762, Stop: 51929, Start Num: 9

Candidate Starts for Rasputia_77:

(Start: 9 @51762 has 11 MA's), (10, 51837), (11, 51876), (12, 51879),

Gene: RikSengupta_36 Start: 23282, Stop: 23452, Start Num: 9

Candidate Starts for RikSengupta_36:

(6, 23186), (Start: 9 @23282 has 11 MA's),

Gene: Sparcetus_36 Start: 23161, Stop: 23331, Start Num: 9

Candidate Starts for Sparcetus_36:

(6, 23065), (8, 23131), (Start: 9 @23161 has 11 MA's),

Gene: TinyMiny_36 Start: 23180, Stop: 23350, Start Num: 9

Candidate Starts for TinyMiny_36:

(6, 23084), (Start: 9 @23180 has 11 MA's),