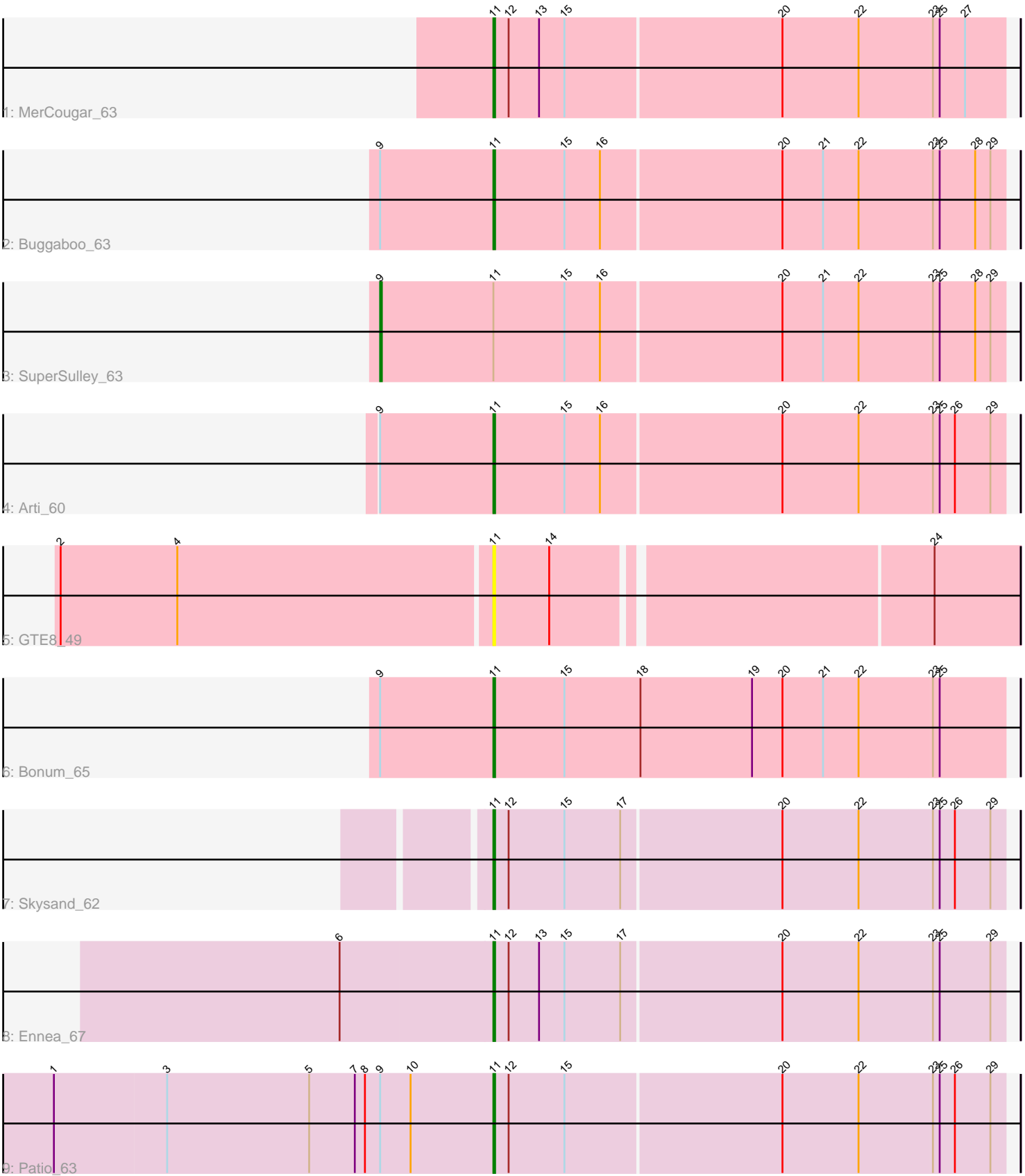


Pham 5802



Note: Tracks are now grouped by subcluster and scaled. Switching in subcluster is indicated by changes in track color. Track scale is now set by default to display the region 30 bp upstream of start 1 to 30 bp downstream of the last possible start. If this default region is judged to be packed too tightly with annotated starts, the track will be further scaled to only show that region of the ORF with annotated starts. This action will be indicated by adding "Zoomed" to the title. For starts, yellow indicates the location of called starts comprised solely of Glimmer/GeneMark auto-annotations, green indicates the location of called starts with at least 1 manual gene annotation.

## Pham 5802 Report

This analysis was run 04/05/24 on database version 557.

Pham number 5802 has 9 members, 1 are drafts.

Phages represented in each track:

- Track 1 : MerCougar\_63
- Track 2 : Buggaboo\_63
- Track 3 : SuperSulley\_63
- Track 4 : Arti\_60
- Track 5 : GTE8\_49
- Track 6 : Bonum\_65
- Track 7 : Skysand\_62
- Track 8 : Ennea\_67
- Track 9 : Patio\_63

### ***Summary of Final Annotations (See graph section above for start numbers):***

The start number called the most often in the published annotations is 11, it was called in 7 of the 8 non-draft genes in the pham.

Genes that call this "Most Annotated" start:

- Arti\_60, Bonum\_65, Buggaboo\_63, Ennea\_67, GTE8\_49, MerCougar\_63, Patio\_63, Skysand\_62,

Genes that have the "Most Annotated" start but do not call it:

- SuperSulley\_63,

Genes that do not have the "Most Annotated" start:

- 

### **Summary by start number:**

Start 9:

- Found in 5 of 9 ( 55.6% ) of genes in pham
- Manual Annotations of this start: 1 of 8
- Called 20.0% of time when present
- Phage (with cluster) where this start called: SuperSulley\_63 (CR2),

Start 11:

- Found in 9 of 9 ( 100.0% ) of genes in pham
- Manual Annotations of this start: 7 of 8
- Called 88.9% of time when present
- Phage (with cluster) where this start called: Arti\_60 (CR2), Bonum\_65 (CR2), Buggaboo\_63 (CR2), Ennea\_67 (CR3), GTE8\_49 (CR2), MerCougar\_63 (CR2), Patio\_63 (CR3), Skysand\_62 (CR3),

### **Summary by clusters:**

There are 2 clusters represented in this pham: CR2, CR3,

Info for manual annotations of cluster CR2:

- Start number 9 was manually annotated 1 time for cluster CR2.
- Start number 11 was manually annotated 4 times for cluster CR2.

Info for manual annotations of cluster CR3:

- Start number 11 was manually annotated 3 times for cluster CR3.

### **Gene Information:**

Gene: Arti\_60 Start: 48190, Stop: 47894, Start Num: 11

Candidate Starts for Arti\_60:

(Start: 9 @48256 has 1 MA's), (Start: 11 @48190 has 7 MA's), (15, 48148), (16, 48127), (20, 48022), (22, 47977), (23, 47935), (25, 47932), (26, 47923), (29, 47902),

Gene: Bonum\_65 Start: 48976, Stop: 48677, Start Num: 11

Candidate Starts for Bonum\_65:

(Start: 9 @49042 has 1 MA's), (Start: 11 @48976 has 7 MA's), (15, 48934), (18, 48889), (19, 48823), (20, 48805), (21, 48781), (22, 48760), (23, 48718), (25, 48715),

Gene: Buggaboo\_63 Start: 49533, Stop: 49237, Start Num: 11

Candidate Starts for Buggaboo\_63:

(Start: 9 @49599 has 1 MA's), (Start: 11 @49533 has 7 MA's), (15, 49491), (16, 49470), (20, 49365), (21, 49341), (22, 49320), (23, 49278), (25, 49275), (28, 49254), (29, 49245),

Gene: Ennea\_67 Start: 50174, Stop: 49878, Start Num: 11

Candidate Starts for Ennea\_67:

(6, 50258), (Start: 11 @50174 has 7 MA's), (12, 50165), (13, 50147), (15, 50132), (17, 50099), (20, 50006), (22, 49961), (23, 49919), (25, 49916), (29, 49886),

Gene: GTE8\_49 Start: 42431, Stop: 42135, Start Num: 11

Candidate Starts for GTE8\_49:

(2, 42683), (4, 42614), (Start: 11 @42431 has 7 MA's), (14, 42398), (24, 42185),

Gene: MerCougar\_63 Start: 49731, Stop: 49435, Start Num: 11

Candidate Starts for MerCougar\_63:

(Start: 11 @49731 has 7 MA's), (12, 49722), (13, 49704), (15, 49689), (20, 49563), (22, 49518), (23, 49476), (25, 49473), (27, 49458),

Gene: Patio\_63 Start: 49177, Stop: 48881, Start Num: 11

Candidate Starts for Patio\_63:

(1, 49435), (3, 49369), (5, 49285), (7, 49258), (8, 49252), (Start: 9 @49243 has 1 MA's), (10, 49225), (Start: 11 @49177 has 7 MA's), (12, 49168), (15, 49135), (20, 49009), (22, 48964), (23, 48922), (25, 48919), (26, 48910), (29, 48889),

Gene: Skysand\_62 Start: 49435, Stop: 49139, Start Num: 11

Candidate Starts for Skysand\_62:

(Start: 11 @49435 has 7 MA's), (12, 49426), (15, 49393), (17, 49360), (20, 49267), (22, 49222), (23, 49180), (25, 49177), (26, 49168), (29, 49147),

Gene: SuperSulley\_63 Start: 49599, Stop: 49237, Start Num: 9

Candidate Starts for SuperSulley\_63:

(Start: 9 @49599 has 1 MA's), (Start: 11 @49533 has 7 MA's), (15, 49491), (16, 49470), (20, 49365), (21, 49341), (22, 49320), (23, 49278), (25, 49275), (28, 49254), (29, 49245),