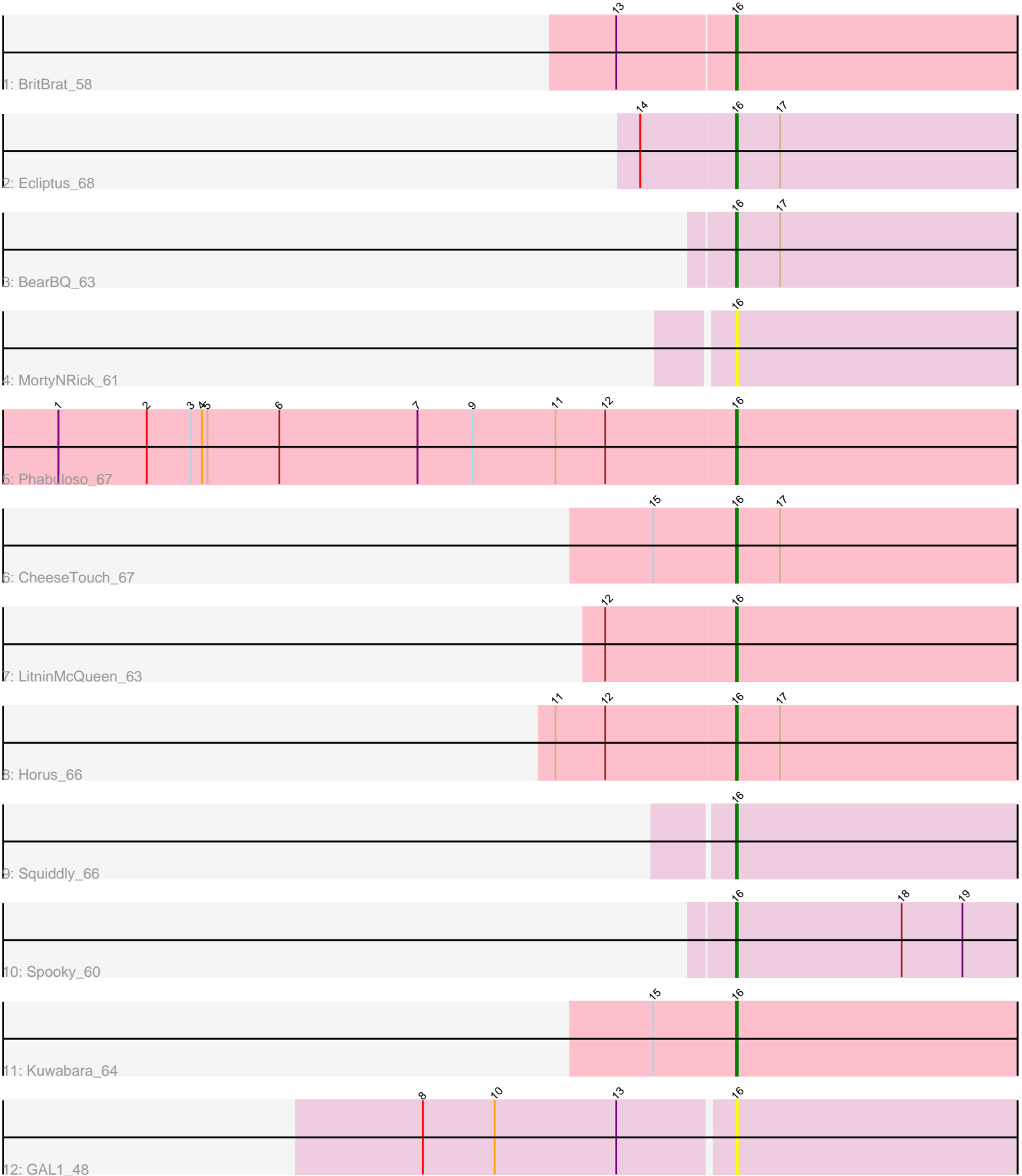


Pham 5918



Note: Tracks are now grouped by subcluster and scaled. Switching in subcluster is indicated by changes in track color. Track scale is now set by default to display the region 30 bp upstream of start 1 to 30 bp downstream of the last possible start. If this default region is judged to be packed too tightly with annotated starts, the track will be further scaled to only show that region of the ORF with annotated starts. This action will be indicated by adding "Zoomed" to the title. For starts, yellow indicates the location of called starts comprised solely of Glimmer/GeneMark auto-annotations, green indicates the location of called starts with at least 1 manual gene annotation.

Pham 5918 Report

This analysis was run 04/05/24 on database version 557.

Pham number 5918 has 12 members, 2 are drafts.

Phages represented in each track:

- Track 1 : BritBrat_58
- Track 2 : Ecliptus_68
- Track 3 : BearBQ_63
- Track 4 : MortyNRick_61
- Track 5 : Phabuloso_67
- Track 6 : CheeseTouch_67
- Track 7 : LitninMcQueen_63
- Track 8 : Horus_66
- Track 9 : Squiddly_66
- Track 10 : Spooky_60
- Track 11 : Kuwabara_64
- Track 12 : GAL1_48

Summary of Final Annotations (See graph section above for start numbers):

The start number called the most often in the published annotations is 16, it was called in 10 of the 10 non-draft genes in the pham.

Genes that call this "Most Annotated" start:

- BearBQ_63, BritBrat_58, CheeseTouch_67, Ecliptus_68, GAL1_48, Horus_66, Kuwabara_64, LitninMcQueen_63, MortyNRick_61, Phabuloso_67, Spooky_60, Squiddly_66,

Genes that have the "Most Annotated" start but do not call it:

-

Genes that do not have the "Most Annotated" start:

-

Summary by start number:

Start 16:

- Found in 12 of 12 (100.0%) of genes in pham
- Manual Annotations of this start: 10 of 10

- Called 100.0% of time when present
- Phage (with cluster) where this start called: BearBQ_63 (DN), BritBrat_58 (CY2), CheeseTouch_67 (DN1), Ecliptus_68 (DN), GAL1_48 (singleton), Horus_66 (DN1), Kuwabara_64 (DN4), LitninMcQueen_63 (DN1), MortyNRick_61 (DN), Phabuloso_67 (DN1), Spooky_60 (DN2), Squiddly_66 (DN2),

Summary by clusters:

There are 6 clusters represented in this pham: DN, CY2, singleton, DN4, DN1, DN2,

Info for manual annotations of cluster CY2:

- Start number 16 was manually annotated 1 time for cluster CY2.

Info for manual annotations of cluster DN:

- Start number 16 was manually annotated 2 times for cluster DN.

Info for manual annotations of cluster DN1:

- Start number 16 was manually annotated 4 times for cluster DN1.

Info for manual annotations of cluster DN2:

- Start number 16 was manually annotated 2 times for cluster DN2.

Info for manual annotations of cluster DN4:

- Start number 16 was manually annotated 1 time for cluster DN4.

Gene Information:

Gene: BearBQ_63 Start: 41288, Stop: 41461, Start Num: 16

Candidate Starts for BearBQ_63:

(Start: 16 @41288 has 10 MA's), (17, 41312),

Gene: BritBrat_58 Start: 40605, Stop: 40778, Start Num: 16

Candidate Starts for BritBrat_58:

(13, 40542), (Start: 16 @40605 has 10 MA's),

Gene: CheeseTouch_67 Start: 36706, Stop: 36879, Start Num: 16

Candidate Starts for CheeseTouch_67:

(15, 36661), (Start: 16 @36706 has 10 MA's), (17, 36730),

Gene: Ecliptus_68 Start: 42135, Stop: 42308, Start Num: 16

Candidate Starts for Ecliptus_68:

(14, 42084), (Start: 16 @42135 has 10 MA's), (17, 42159),

Gene: GAL1_48 Start: 35018, Stop: 35191, Start Num: 16

Candidate Starts for GAL1_48:

(8, 34853), (10, 34892), (13, 34958), (Start: 16 @35018 has 10 MA's),

Gene: Horus_66 Start: 41322, Stop: 41495, Start Num: 16

Candidate Starts for Horus_66:

(11, 41226), (12, 41253), (Start: 16 @41322 has 10 MA's), (17, 41346),

Gene: Kuwabara_64 Start: 41104, Stop: 41277, Start Num: 16

Candidate Starts for Kuwabara_64:

(15, 41059), (Start: 16 @41104 has 10 MA's),

Gene: LitninMcQueen_63 Start: 40075, Stop: 40242, Start Num: 16

Candidate Starts for LitninMcQueen_63:

(12, 40006), (Start: 16 @40075 has 10 MA's),

Gene: MortyNRick_61 Start: 41413, Stop: 41586, Start Num: 16

Candidate Starts for MortyNRick_61:

(Start: 16 @41413 has 10 MA's),

Gene: Phabuloso_67 Start: 40494, Stop: 40667, Start Num: 16

Candidate Starts for Phabuloso_67:

(1, 40128), (2, 40176), (3, 40200), (4, 40206), (5, 40209), (6, 40248), (7, 40323), (9, 40353), (11, 40398), (12, 40425), (Start: 16 @40494 has 10 MA's),

Gene: Spooky_60 Start: 39016, Stop: 39189, Start Num: 16

Candidate Starts for Spooky_60:

(Start: 16 @39016 has 10 MA's), (18, 39106), (19, 39139),

Gene: Squiddly_66 Start: 43981, Stop: 44154, Start Num: 16

Candidate Starts for Squiddly_66:

(Start: 16 @43981 has 10 MA's),